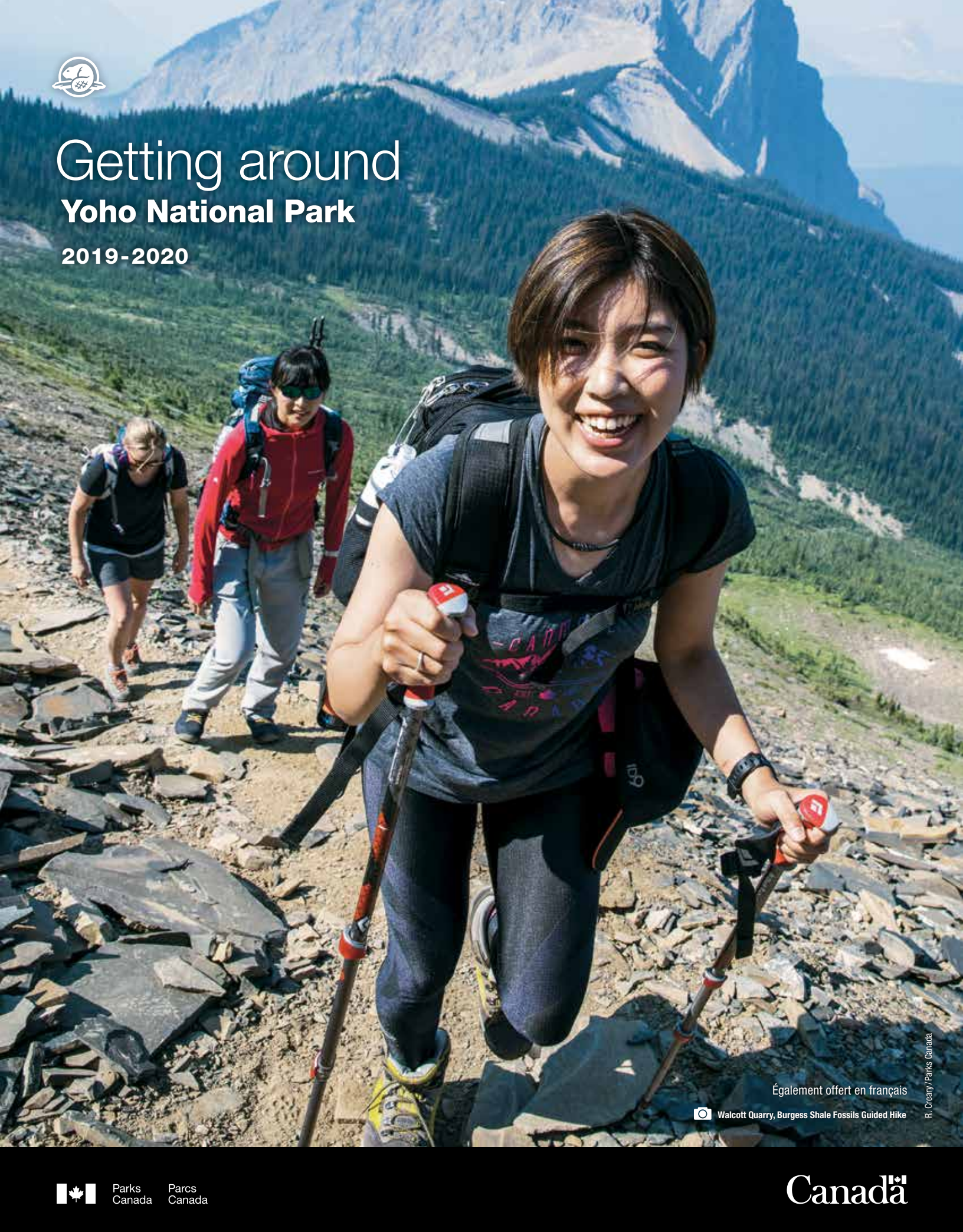





# Getting around Yoho National Park

2019-2020



Également offert en français

 Walcott Quarry, Burgess Shale Fossils Guided Hike

R. Creary / Parks Canada



Parks  
Canada

Parcs  
Canada

Canada



United Nations  
Educational, Scientific and  
Cultural Organization

Organisation  
des Nations Unies  
pour l'éducation,  
la science et la culture



Canadian Rocky  
Mountain Parks  
inscribed on the World  
Heritage List in 1984

Parcs des montagnes  
Rocheuses canadiennes  
inscrit sur la Liste du  
patrimoine mondial en 1984

R. Creary/Parks Canada

## Our story

The Rocky Mountains have been part of Indigenous peoples' homelands for thousands of years; recent history brought new people. In 1858, during a celebrated British expedition to explore the West for railway routes, Dr. James Hector became the first European to map the mountain pass that would become an important transportation corridor. After the doctor's horse knocked him over with a kick to the chest, the spectacular route was dubbed Kicking Horse Pass.

Later, the Canadian Pacific Railway, whose transcontinental route travelled through the pass, set up restaurants at the base of Mount Stephen to avoid pushing heavy dining cars up the mountain. This laid the groundwork for creating the Mount Stephen Reserve, renamed in 1901 as Yoho National Park.

Eight years later, a visiting scientist, Dr. Charles Doolittle Walcott, discovered the Burgess Shale fossils on Mount Wapta. These exquisitely preserved marine organisms offer a glimpse back more than 505 million years ago. With fossils of global importance, 36 peaks soaring above 3 000 m, the rambunctious Kicking Horse River, and numerous breathtaking waterfalls, it is no surprise visitors make personal discoveries anew.



R. Creary/Parks Canada

## A UNESCO World Heritage Site

Four of the mountain national parks—Banff, Jasper, Yoho, and Kootenay—are recognized by the United Nations Educational, Scientific and Cultural Organization as part of the Canadian Rocky Mountain Parks World Heritage Site, for the benefit and enjoyment of all nations.

Among the attributes that warranted this designation were vast wilderness, diversity of flora and fauna, outstanding natural beauty and features such as Lake Louise, Maligne Lake, the Columbia Icefield, and the Burgess Shale fossils.

## Welcome to Yoho National Park

Visit the **Yoho National Park Visitor Centre** located on the Trans-Canada Highway at Field. Parks Canada staff will provide you with up-to-date park information and assist you in planning your visit to Yoho National Park!

Take this opportunity to examine a large collection of Burgess Shale fossil specimens on display and watch model trains twist through a Spiral Tunnels replica.

Don't forget to stop by the Friends of Yoho gift shop for souvenirs, guidebooks, and topographical maps. Free Wi-Fi Internet access available.

### Visitor centre hours:

May 1 to May 30: 9 a.m. to 5 p.m.

June 1 to Sept 30: 8:30 a.m. to 7 p.m.

Oct 1 to Oct 14: 9 a.m. to 5 p.m.

Oct 15 to March 31, 2020: Closed but washroom facilities are available year-round.

All other park facilities, viewpoints, and picnic areas are typically open from mid-May to mid-October. All opening dates are weather dependent.

**250-343-6783**

**[pc.yohoinfo.pc@canada.ca](mailto:pc.yohoinfo.pc@canada.ca)**

## Meet Parks Canada's interpreters

Do you want to discover more about the uniqueness of Yoho's natural and cultural heritage? Friendly and knowledgeable interpreters are here to help you connect to these special places protected by Parks Canada.

Watch for interpreters at campgrounds and popular day-use areas in Yoho National Park in the summer months.

Check [parkscanada.gc.ca/yoho-interpretation](http://parkscanada.gc.ca/yoho-interpretation) for more information on interpretive experiences in Yoho.

[parkscanada.gc.ca/yoho](http://parkscanada.gc.ca/yoho)



[facebook.com/yohonp](https://www.facebook.com/yohonp)



[twitter.com/yohonp](https://twitter.com/yohonp)

Accommodations and attractions in Field:  
[field.ca](http://field.ca)

Tourism Golden:  
**1-800-622-4653**  
[tourismgolden.com](http://tourismgolden.com)



P. Essick

## Supporting parks

Entry fees are charged at most national parks and national historic sites, where revenues are kept to support visitor services and facilities. This means that every time you visit a park or site you are investing in its future — and in a legacy for future generations. Pick up your day pass or annual pass at any park gate, visitor centre, or staffed campground kiosks.

### DAILY ENTRY

The daily entry pass is valid in Yoho, Kootenay, Banff, and Jasper national parks. Regardless of time of entry, the pass is valid until 4 p.m. the following day.

Adult (18-64) \$9.80

Senior (65+) \$8.30

Youth (0-17) FREE

Family/group \$19.60

*(up to 7 people in a vehicle)*

Commercial group, per person \$8.30

### PARKS CANADA DISCOVERY PASS

The Parks Canada Discovery Pass is valid for 12 full months from date of purchase and gives you unlimited admission to enjoy national parks, national marine conservation areas, and national historic sites across Canada.

Adult (18-64) \$67.70

Senior (65+) \$57.90

Family/group \$136.40

*(up to 7 people in a vehicle)*

# Top 10 things to do



R. Creary/Parks Canada

## 1 BURGESS SHALE FOSSILS GUIDED HIKES

Meet your ancient ancestors and hold a piece of earth's history on a guided hike to the restricted Walcott Quarry or Mount Stephen fossil sites. Reservations are required. Visit [reservation.pc.gc.ca](https://reservation.pc.gc.ca) to book your spot. Late bookings welcome!

## 2 CAMPING

Tenting? RV-ing? Enjoy a family getaway in one of Yoho's four rustic campgrounds. Roast marshmallows, take a hike or wander through the community of Field. Yoho's campgrounds keep you close to the adventure!



M. Bradfield

## 3 INTERPRETIVE PROGRAMS

Why is Emerald Lake so green? How tall is Takakkaw Falls? What do fossils have to do with Star Wars™? Get the answers to these questions and more at one of many interpretive programs offered daily in July and August.

## 4 VILLAGE OF FIELD

Take an afternoon walk and experience Field's mountain hospitality. Stay in a unique guesthouse, pick out the perfect souvenir in one of the gift shops or enjoy the culinary delights of this charming community.



Destination BC/D. Heath

## 5 EMERALD LAKE

Admire incredible views of mountain peaks and wildflowers on an afternoon stroll around this gem-coloured lake. Pack a picnic lunch or go for a canoe ride to get a different perspective of the surrounding mountains.

## 6 NATURAL BRIDGE

Marvel at the force of the Kicking Horse River as it cascades under a naturally formed stone bridge. This rambunctious river takes its name from a near-fatal kick that stunned James Hector while exploring the area in 1858.

## 7 TAKAKKAW FALLS

Enjoy a scenic drive on the Yoho Valley Road. Then, cool off in the mist as you stand at the base of the thundering waters of one of the highest waterfalls in Canada. This is your **#timetoconnect**. Snap a selfie from the red chairs and share your adventure!



M. Bradfield

## 8 SPIRAL TUNNELS VIEWPOINTS

Watch trains snake through the Spiral Tunnels from the viewpoints on the Trans-Canada Highway or Yoho Valley Road. Discover how Yoho's towering peaks and steep hills have inspired the stories of the Kicking Horse Pass National Historic Site.

## 9 HIKING

Lace up your hiking boots for an epic backcountry adventure! See Yoho from the perspective of the park's first wardens on the Paget or Mount Hunter fire lookout trails or take an afternoon stroll to Hamilton Falls.



S. Fuller/Parks Canada

## 10 WAPTA FALLS

At 30 metres high and 150 metres wide, this is the largest waterfall on the Kicking Horse River. Take a gentle 4.6-km return hike through verdant forests to a stunning viewpoint. *Note: the 2-km vehicle access road to Wapta Falls is closed from late October to late May.*

## Suggested itineraries



K. Smith

### Half-day adventures

#### TAKE A SCENIC DRIVE

Get off the Trans-Canada Highway and explore! Follow Emerald Lake Road and discover a jewel of the Canadian Rockies as you paddle, walk or ski around the magnificent **Emerald Lake**. From late June until early October, drive or bike the 13-km scenic Yoho Valley Road. Experience the power of **Takakkaw Falls**—one of the tallest waterfalls in Canada. Pack a picnic lunch or stop and watch the trains as they snake overtop of themselves at the **Spiral Tunnels Viewpoints**.

#### STRETCH YOUR LEGS

Enjoy an easy half-day hike to a peaceful backcountry lake. The whole family will enjoy the 6.2-km return hike through a mature forest to **Sherbrooke Lake**. Relax next to this glacier fed lake and take in the view of the surrounding mountain peaks. For an additional challenge, head east at the fork in the trail and climb to **Paget Lookout**. From this historic viewpoint, admire the view of Kicking Horse Pass and see why this was a crucial vantage point when watching for wildfires.

### A full day of fun

#### TAKE A WATERFALL TOUR

Explore five of Yoho's most impressive waterfalls on foot. Feel the cool mist on your face at **Takakkaw Falls** and snap a selfie from the red chairs before following the Laughing Falls Trail to **Point Lace Falls** and **Angel's Staircase**. Climb through a mature forest to **Laughing Falls**; then continue along this historic trail, first cut by the Canadian Pacific Railway, to **Twin Falls**. Here the double waterfalls tumble over a massive limestone cliff.

#### TAKE IN THE VIEW

Climb above the treeline and get a bird's eye view of Yoho's valleys and towering peaks on the iconic **Iceline** circuit. Beginning early from the Takakkaw Falls Campground, follow the trail to **Laughing Falls** and steadily climb through the forest to a beautiful hanging valley. The **Little Yoho Valley** offers dramatic views of the President Range. Continue on the **Iceline Trail** and stand amongst glaciers as you take in the expansive views and look down on Takakkaw Falls. Stop at **Yoho Lake** on your way down to relax in the red chairs.

# Where to hike

Type	Summer hiking trails	Estimated time (return)	Distance (return)	Elevation gain
Short hikes	1 Wapta Falls  Eastbound access only	1.5 hours	4.6 km (late Oct to late May: 8.6 km)	gain/loss 30 m
	2 Emerald Lake	2 hours	5.2 km	minimal
	3 Hamilton Falls	30 minutes	1.6 km	minimal
	4 Centennial	45 minutes	2.5 km	minimal
	5 Walk-in-the-Past	1.5 hours	3 km	90 m
Half-day hikes	7 Sherbrooke Lake  Westbound access only	3 hours	6.2 km	165 m
	8 Great Divide	2 hours	6 km	minimal
	9 Ross Lake	2 hours	6.4 km	100 m
	10 Laughing Falls	3.5 hours	8.8 km	125 m
	12 Mt. Hunter Lookout  Eastbound access only	3 hours	7.2 km	410 m
Full-day and overnight hikes	14 Hoodoos	2.5 hours	5.2 km	325 m
	15 Emerald Basin	3.5 hours	9.2 km	225 m
	16 Paget Lookout  Westbound access only	3 hours	7 km	520 m
	17 Hamilton Lake	5 hours	11 km	850 m
	18 Yoho Pass	5 hours or 2 days	12.8 km	530 m
	19 Twin Falls	6 hours or 2 days	16.4 km	300 m
	22 Emerald Triangle	8 hours	19.7 km	880 m
	23 Iceline via Little Yoho	8 hours or 2 days	20.8 km	710 m
	24 Iceline via Celeste Lake	7 hours	17.5 km	695 m
26 Whaleback	7.5 hours	21.3 km	700 m	
27 Little Yoho Valley	7 hours	18.6 km	520 m	

Easy Moderate Difficult

Hiking trails shown on the park map (pages 8 and 9). Trail reports and hiking maps are available from the Yoho National Park Visitor Centre and at [parkscanada.gc.ca/yohotrails](http://parkscanada.gc.ca/yohotrails)

# Where to camp

Frontcountry campgrounds		Full hook-up	Electrical	Sani dump	Flush toilets	Pit toilets	Showers	Firepit	Cooking shelter	Drinking water	oTENTik	Interpretive programs	Disabled access	Open dates	Sites	Prices
<b>YOHO NATIONAL PARK</b>																
1	Monarch													May 2 - October 14	44	\$17.60
2	Kicking Horse													May 23 - October 14	88	\$27.40
3	Takakkaw Falls (walk-in)													June 20 - October 14	35	\$17.60
4	Hoodoo Creek													June 20 - September 2	30	\$15.70

Reservations available at highlighted campgrounds and recommended from June 15 to September 15.

## BACKCOUNTRY CAMPING

Reservations are required at all backcountry campgrounds in Yoho National Park: Yoho Lake Laughing Falls, Twin Falls, Little Yoho, and McArthur Creek. The campgrounds are equipped with tent pads, dry toilets, communal picnic tables, and food storage cables or lockers. Fires are not permitted. Visit [parkscanada.gc.ca/ynp-backcountry](http://parkscanada.gc.ca/ynp-backcountry) for more details.

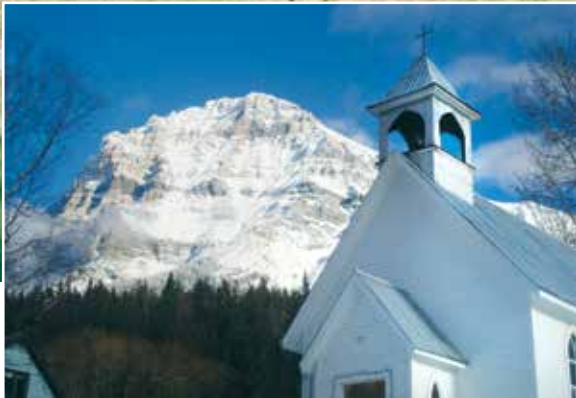
## RESERVATIONS

[reservation.pc.gc.ca](http://reservation.pc.gc.ca)

1-877-reserve (737-3783)

Same day backcountry reservations can be made at a visitor centre.

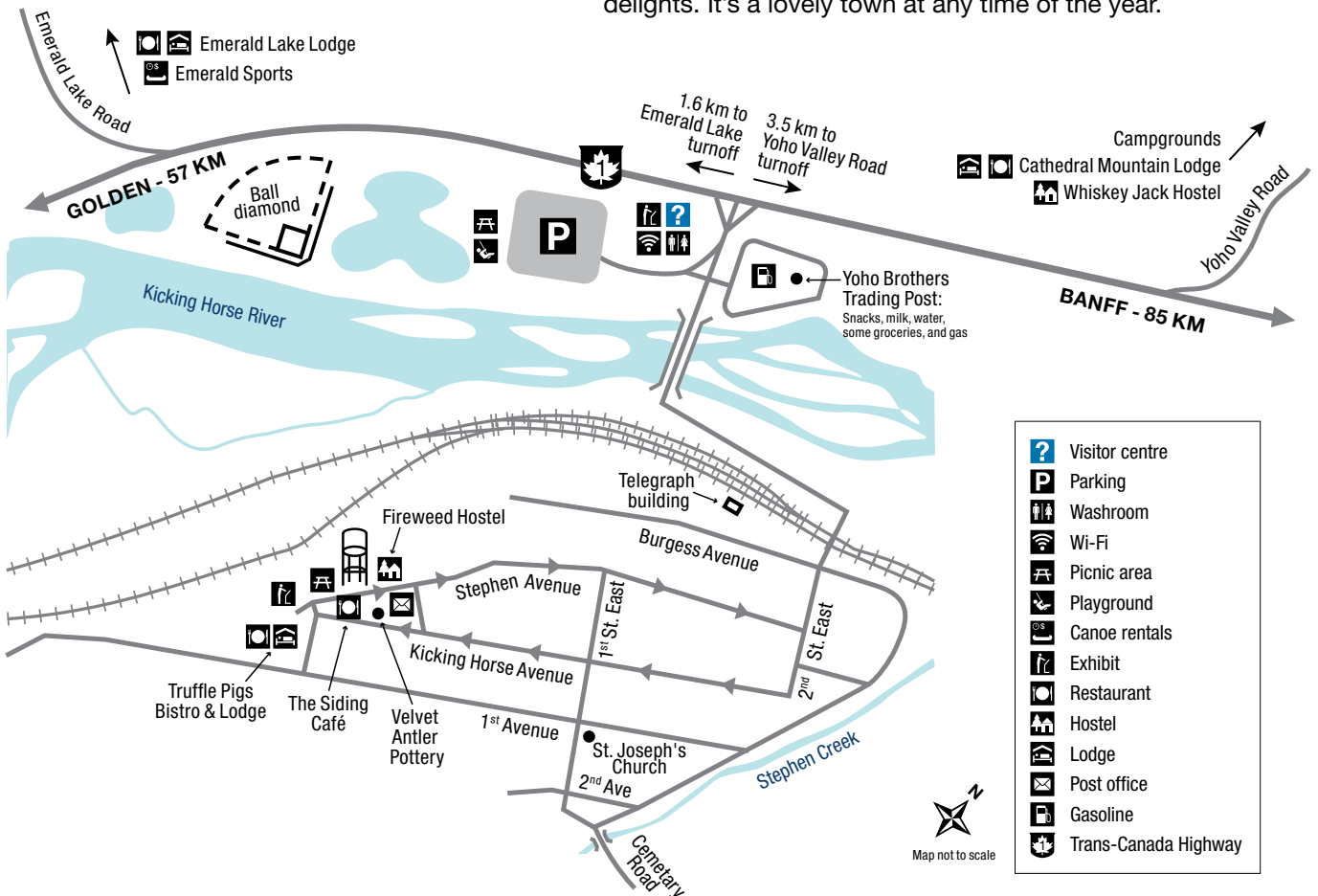
# Village of Field



C. Chapman

C. Chapman

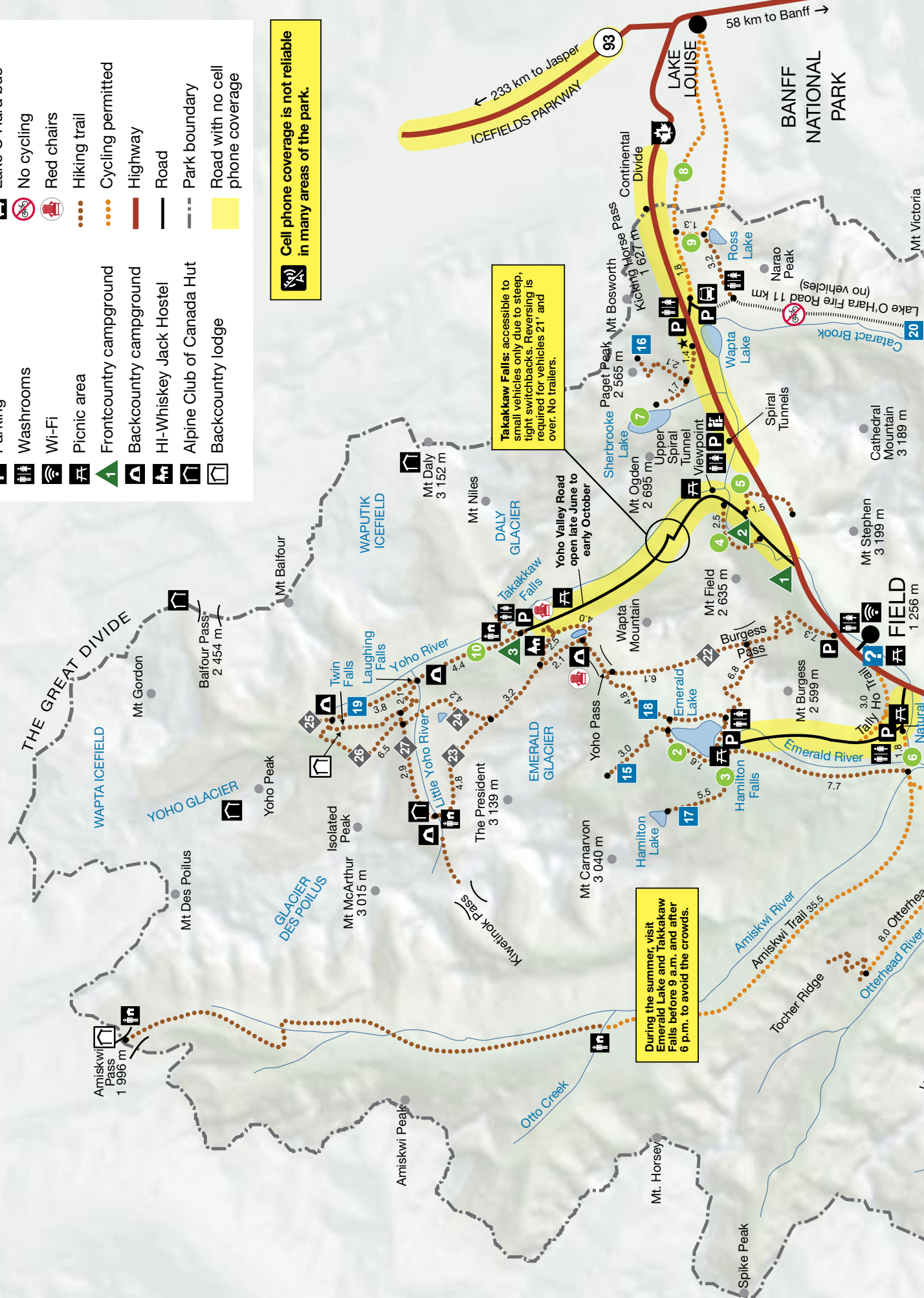
Established in the 1880s as a siding for the Canadian Pacific Railway, this charming village of fewer than 200 people is an authentic mountain retreat with accommodation year-round, artisan crafts, and culinary delights. It's a lovely town at any time of the year.



# YOHO NATIONAL PARK

- |  |                                  |
|--|----------------------------------|
|  | Visitor centre                   |
|  | Parking                          |
|  | Washrooms                        |
|  | Wi-Fi                            |
|  | Picnic area                      |
|  | Frontcountry campground          |
|  | Backcountry campground           |
|  | HI-Whiskey Jack Hostel           |
|  | Alpine Club of Canada Hut        |
|  | Backcountry lodge                |
|  | Parks Canada station             |
|  | Lake O'Hara bus                  |
|  | No cycling                       |
|  | Red chairs                       |
|  | Hiking trail                     |
|  | Cycling permitted                |
|  | Highway                          |
|  | Road                             |
|  | Park boundary                    |
|  | Road with no cell phone coverage |

Cell phone coverage is not reliable in many areas of the park.



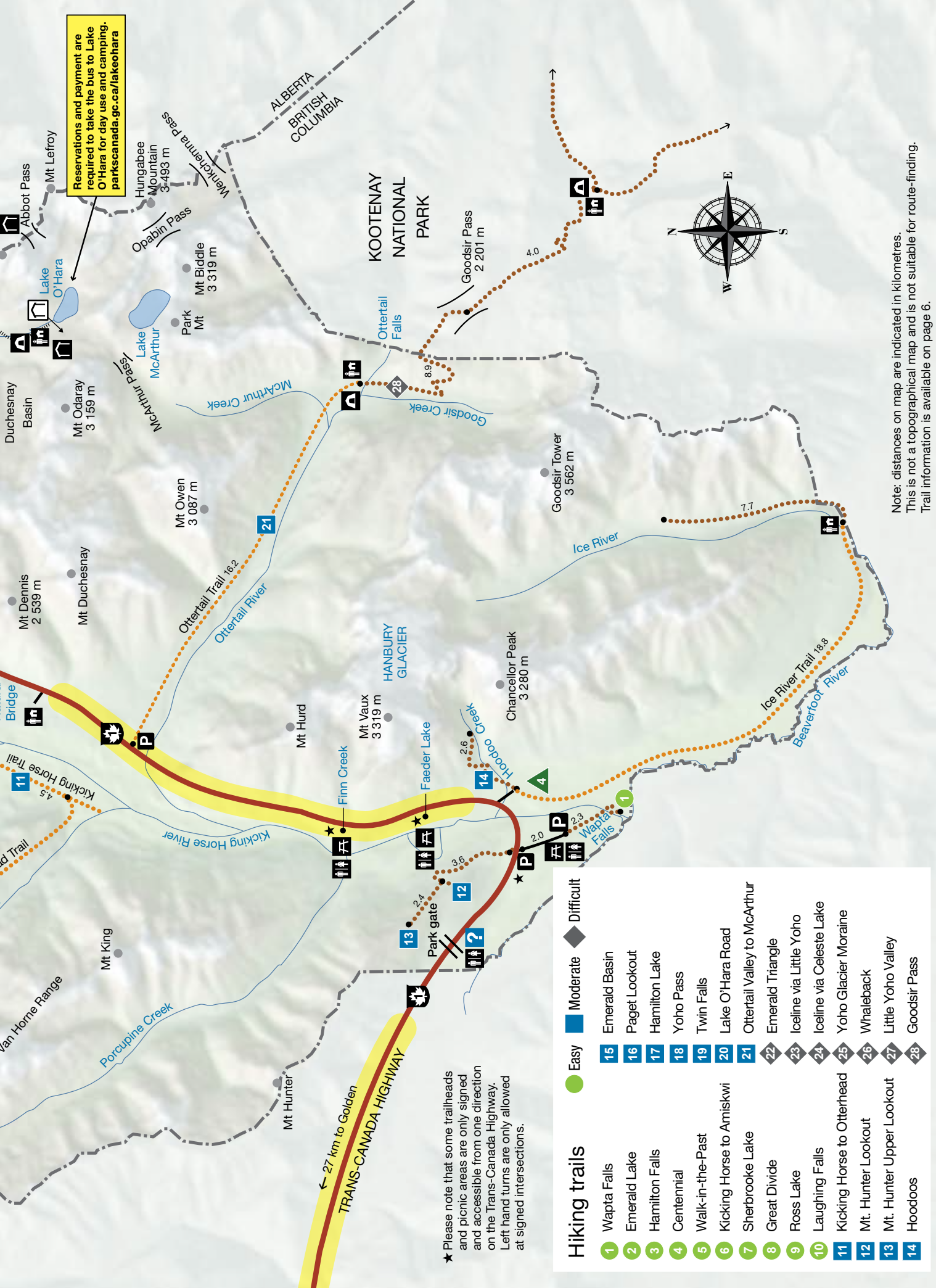
**Takakkaw Falls:** accessible to small vehicles only due to steep, tight switchbacks. Reversing is required for vehicles 21' and over. No trailers.

During the summer, visit Emerald Lake and Takakkaw Falls before 9 a.m. and after 6 p.m. to avoid the crowds.

ICEFIELDS PARKWAY  
 ← 233 km to Jasper  
 93  
 58 km to Banff →

BANFF NATIONAL PARK





Reservations and payment are required to take the bus to Lake O'Hara for day use and camping. [parkscanada.gc.ca/lakeohara](http://parkscanada.gc.ca/lakeohara)



Note: distances on map are indicated in kilometres. This is not a topographical map and is not suitable for route-finding. Trail information is available on page 6.

★ Please note that some trailheads and picnic areas are only signed and accessible from one direction on the Trans-Canada Highway. Left hand turns are only allowed at signed intersections.

Hiking trails		Easy	Moderate	Difficult
1	Wapta Falls	●	■	◆
2	Emerald Lake	●	■	◆
3	Hamilton Falls	●	■	◆
4	Centennial	●	■	◆
5	Walk-in-the-Past	●	■	◆
6	Kicking Horse to Amiskwi	●	■	◆
7	Sherbrooke Lake	●	■	◆
8	Great Divide	●	■	◆
9	Ross Lake	●	■	◆
10	Laughing Falls	●	■	◆
11	Kicking Horse to Otterhead	●	■	◆
12	Mt. Hunter Lookout	●	■	◆
13	Mt. Hunter Upper Lookout	●	■	◆
14	Hoodoos	●	■	◆
15	Emerald Basin	●	■	◆
16	Paget Lookout	●	■	◆
17	Hamilton Lake	●	■	◆
18	Yoho Pass	●	■	◆
19	Twin Falls	●	■	◆
20	Lake O'Hara Road	●	■	◆
21	Ottertail Valley to McArthur	●	■	◆
22	Emerald Triangle	●	■	◆
23	Iceline via Little Yoho	●	■	◆
24	Iceline via Celeste Lake	●	■	◆
25	Yoho Glacier Moraine	●	■	◆
26	Whaleback	●	■	◆
27	Little Yoho Valley	●	■	◆
28	Goodsir Pass	●	■	◆

## Help protect visitors, landscapes, and wildlife

Please follow park regulations while enjoying Yoho National Park:

- **Camp only in designated campgrounds.** Camping is by permit only. Do not sleep in your vehicle or RV roadside, at pull-outs or pitch a tent in areas that are not campgrounds.
- **Liquor** consumption is prohibited in public places.
- **Cannabis** consumption is not allowed in campground main areas and within 6 m of buildings and playgrounds.
- During long weekends, alcohol and cannabis are not permitted at any campground.
- **Drones/UAVs are prohibited** for personal use anywhere in the national parks.
- **Do not litter.** Use the wildlife-proof garbage bins for all unwanted items.
- It is illegal to pick flowers, mushrooms, cut down trees, branches, remove rocks, cultural artifacts or otherwise cause damage to natural objects or living things. Take only photographs.
- **Stay out of closed areas.** Area closures or activity restrictions are implemented when visitors are at risk or when wildlife require additional protection. Signs indicate the areas impacted.
- **Be careful with fire.** Fires are permitted only in designated metal fire pits. Never leave a fire unattended. Extinguish fires completely. Do not use deadwood, bark or branches for fuel. Be aware of fire bans.
- **Buy fishing permits.** Anglers require a national park fishing permit, available at Parks Canada visitor centres. **Provincial licenses are not valid in national parks.** National Park Fishing Regulations prohibit lead tackle under 50 g, and all bait (natural or chemical). For more information, see the Fishing Regulations Summary brochure, available at Parks Canada visitor centres.
- Motorized off-road travel is not permitted.
- **Firearms are prohibited in national parks.** Firearms include pellet guns, bear bangers, bows, slingshots, and similar items.
- Motors of all kinds are prohibited on all lakes in Yoho National Park.



CRMR/D. Ziver

## Attention water enthusiasts

### Preventing the spread of aquatic diseases and invasive species requires everyone's support.

Any item that has touched a water body must be cleaned before entering another water body.

**CLEAN** off all sand, mud, and plant or animal material from your watercraft and equipment each time you exit the water and before moving to another water body.

**DRAIN** onto land, all water from your watercraft and equipment before leaving the area.

**DRY** the watercraft and all gear completely between trips. If possible allow for a minimum of 24 hours drying time in sunlight.

For more information:

[pc.llykaquatics-aquatiquesllyk.pc@canada.ca](mailto:pc.llykaquatics-aquatiquesllyk.pc@canada.ca)

### The Canada National Parks Act

Park Wardens are responsible for enforcing park regulations as required by the *Canada National Parks Act*.

To report national park violations, call 24 hours a day, 7 days per week.

**1-888-927-3367**

(Banff, Yoho, Kootenay and Waterton Lakes)

**1-877-852-3100**

(Jasper, Mount Revelstoke and Glacier)

Violators will be charged, be required to appear in court and could pay fines of up to \$25,000.



P. Essick

## Mountain safety

Unpredictable mountain weather can change road and trail conditions quickly and wildlife can be anywhere, at any time. These simple precautions will help ensure a safe and enjoyable visit:

- Before heading out, check trail conditions at [parks.canada.gc.ca/yohotrails](https://parks.canada.gc.ca/yohotrails). For road conditions visit [drivebc.ca](https://drivebc.ca) or call 1-800-550-4997.
- Obey speed limits and watch for wildlife on the roadside, even on fenced portions of the highway. Sometimes wildlife, such as bears and cougars, get through or over the fence.
- Stay on designated roads, trails, and other hardened surfaces.
- Make noise on the trails and let wildlife know you are coming.
- Be aware of your surroundings. Earbuds prevent you from hearing wildlife and increase your risk of a dangerous encounter.
- Animals are active in the park at all times of the year – even bears can wake up during the winter. Carry bear spray, keep it accessible, and know how to use it. Watch a video at [parks.canada.gc.ca/bearspray](https://parks.canada.gc.ca/bearspray)

- Keep clear of cliffs, ledges, and fast moving water.
- Research and plan overnight trips including potential trail restrictions and closures, avalanche conditions, and mandatory backcountry permits. Visit [parks.canada.gc.ca/ynp-backcountry](https://parks.canada.gc.ca/ynp-backcountry) and [avalanche.ca](https://avalanche.ca) for safety tips.
- Let someone know your travel plans; **cell phone coverage is not reliable in many areas of the park**, including the Yoho Valley and Emerald Lake roads and portions of the Trans-Canada Highway. See park map on pages 8 and 9 for specific areas.
- Report bear, cougar, wolf, and coyote sightings and encounters to Parks Canada staff when it is safe to do so: 403-762-1473.

## Keep your children safe

Bears, cougars, wolves, and coyotes may be curious about children and can attack them:

- Keep children in immediate sight and within close reach at all times.
- Children should avoid playing in or near areas with tall grass or dense bushes.
- Never allow children to pet, feed, or pose with wildlife.

# Protect wildlife



Halverson/Parks Canada

## Obey speed limits

### If you see wildlife by the road, always slow down.

If you do stop (not recommended for the safety of wildlife):

- Be aware of the traffic around you.
- Pull over where it is safe to do so.
- Never stop on hills or corners.
- Use your hazard lights to alert other drivers.
- **Stay in your vehicle.**
- Watch for a few moments, take a quick photo, and then move on.
- If a traffic jam develops, move on. It is unsafe for people and wildlife.

## Keep your pets under control

Dogs or other pets cause stress for wildlife. Dogs, like wolves and coyotes, may be seen as a threat. Off-leash dogs can trigger aggressive behaviour from wildlife such as grizzly bears and elk. To prevent unsafe situations, it is your responsibility to:



Ensure your dog is on a leash and under control at all times.

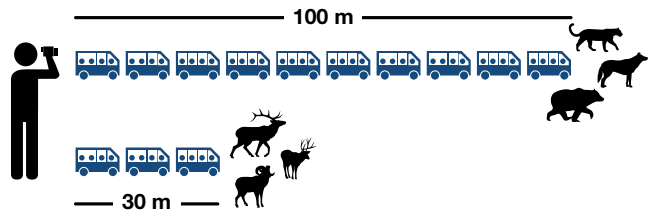


Pick up and dispose of your pet's waste in a garbage bin.



Do not leave pet food out. If you walk away, store food dishes – empty or full. Always store food dishes at night.

## Give wildlife the space they need



Photograph wildlife from a vehicle or safe distance:

- 30 metres for deer, elk, moose, and bighorn sheep
- 100 metres for cougars, bears, coyotes, and wolves



When taking photos, do not surround, crowd or follow an animal. Use zoom or show the animal in its natural surroundings and crop the image later.



**Do not startle wildlife. If you make them move, you are too close.**

## Learn more about wildlife and safety

Pick up a copy of *Keep the Wild in Wildlife and Bears and People* publications at a Parks Canada visitor centre or visit [parkscanada.gc.ca/yoho-brochures](http://parkscanada.gc.ca/yoho-brochures)

Also available in French, Chinese, Japanese, and Korean.



**It is illegal to feed, entice or disturb any wildlife in a national park.**

**Violators will be charged, be required to appear in court, and could pay fines up to \$25,000.**

## Properly store all food and scented items

A clean campsite or picnic area does not have anything that will attract wildlife (food, garbage, food-related or scented items). Never leave these items where wildlife can access them:

- Coolers – full or empty
- Food – wrapped, unwrapped, or in containers
- Garbage/wrappers
- Dishes/pots/cutlery – clean or dirty
- Full or empty beverage containers
- Pet food/bowls – full or empty
- Bottles/cans – open or unopened
- Scented products – such as shampoo, toothpaste, candles, citronella, dish soap, sunscreen, lip balm, and dish towels
- Barbecues – clean or dirty
- Any other items used for food preparation or that have a smell or scent



## Always keep your campsite or picnic area clean



- All food, food-related, and scented items **must** be stored away.
- Ensure all garbage and recycling are disposed in wildlife-proof bins immediately.
- Dump dish water down outdoor sinks or at the sani dump in campgrounds.
- Non-food items may be left outside.

# Want more info?

## Lake O'Hara

To protect this sensitive alpine area and provide a wilderness experience, a quota system is in place to limit the number of visitors using the public bus service into Lake O'Hara. Spots fill up quickly and advanced reservations for day use and camping are required.

Plan ahead and book as soon as reservations open for the season: [parksCanada.gc.ca/lakeohara](http://parksCanada.gc.ca/lakeohara)



R. Ouellet/Parks Canada

## Winter in Yoho

Come create lasting memories on Yoho's peaceful trails this winter. From late-December through early April, Yoho National Park turns into a winter wonderland for cross-country skiing and snowshoeing.

Start your cross-country ski adventure from the visitor centre or drive directly to the Natural Bridge, Emerald Lake or the start of the Yoho Valley Road to access the groomed winter trails, generously maintained by the Kicking Horse Ski Club. [khsc.ca](http://khsc.ca)

A few unmaintained trails are recommended for snowshoeing in the winter. Visit [parksCanada.gc.ca/yoho-winter](http://parksCanada.gc.ca/yoho-winter) for more details. Before heading out, please always check trail reports and warnings: [parksCanada.gc.ca/yohotrails](http://parksCanada.gc.ca/yohotrails)



Avalanche season in the mountains extends from November to June.

A short walk from a parking lot can take you into avalanche terrain.

Please respect all avalanche warning signs.

[avalanche.ca](http://avalanche.ca)



## Mountain national parks information

### BANFF

Banff Visitor Centre: 403-762-1550  
Lake Louise Visitor Centre: 403-522-3833  
[parksCanada.gc.ca/banff](http://parksCanada.gc.ca/banff)

Banff Lake Louise Tourism: 403-762-8421  
[banfflakelouise.com](http://banfflakelouise.com)

### JASPER

Jasper Information Centre: 780-852-6176  
[parksCanada.gc.ca/jasper](http://parksCanada.gc.ca/jasper)

Tourism Jasper: 780-852-6236  
[jasper.travel](http://jasper.travel)

### KOOTENAY

Kootenay Visitor Centre: 250-347-9505  
[parksCanada.gc.ca/kootenay](http://parksCanada.gc.ca/kootenay)

Tourism Radium/Radium Chamber of Commerce:  
1-888-347-9331  
[radiumhotsprings.com](http://radiumhotsprings.com)

### MOUNT REVELSTOKE AND GLACIER

Rogers Pass Discovery Centre: 250-837-7500  
[parksCanada.gc.ca/glacier](http://parksCanada.gc.ca/glacier)  
[parksCanada.gc.ca/revelstoke](http://parksCanada.gc.ca/revelstoke)

### WATERTON LAKES

Waterton Lakes Visitor Centre: 403-859-5133  
[parksCanada.gc.ca/waterton](http://parksCanada.gc.ca/waterton)

### YOHO

Yoho Visitor Centre: 250-343-6783  
[parksCanada.gc.ca/yoho](http://parksCanada.gc.ca/yoho)

Accommodations and attractions in Field: [field.ca](http://field.ca)

## RESERVATIONS

[reservation.pc.gc.ca](http://reservation.pc.gc.ca) 1-877-reserve (737-3783)

## Construction projects

Improvement to roads, bridges, parking lots, day-use areas, and visitor services will continue in the mountain parks in 2019. These improvements will help Parks Canada provide quality experiences for visitors while achieving conservation gains. We thank you for your patience.

### Plan ahead:

[parksCanada.gc.ca/yoho-construction](http://parksCanada.gc.ca/yoho-construction)  
[parksCanada.gc.ca/banff-construction](http://parksCanada.gc.ca/banff-construction)  
[parksCanada.gc.ca/jasper-construction](http://parksCanada.gc.ca/jasper-construction)  
[parksCanada.gc.ca/kootenay-construction](http://parksCanada.gc.ca/kootenay-construction)



# Camping in the mountain parks


Frontcountry campgrounds	Full hook-up	Electrical	Sani dump	Flush toilets	Pit toilets	Showers	Firepit	Cooking shelter	Drinking water	oTENTiK	Interpretive programs	Disabled access	Open dates	Sites	Prices
<b>KOOTENAY NATIONAL PARK</b>															
Marble Canyon													June 20 – September 9	61	\$21.50
McLeod Meadows													June 13 – September 16	88	\$21.50
Redstreak													May 2 – October 15	242	\$27.40 - \$38.20
Crook's Meadow (groups only)													Call 250-347-2218 for information on non-profit group camping reservations and fees.	1	
<b>BANFF NATIONAL PARK</b>															
Tunnel Mt. Village I													June – October 7	618	\$27.40
Tunnel Mt. Village II													Open year-round	209	\$27.40 - \$32.30
Tunnel Mt. Trailer Court													May 9 – October 7	322	\$38.20
Two Jack Main													June 20 – September 3	380	\$21.50
Two Jack Lakeside													May 9 – October 7	74	\$27.40
Johnston Canyon													Closed for construction in 2019	132	\$27.40
Castle Mountain													May 30 - September 16	43	\$21.50
Protection Mountain													June 21 - September 2	72	\$21.50
Lake Louise Tent													May 30 – September 30	206	\$27.40
Lake Louise Trailer													Open year-round	189	\$32.30
Mosquito Creek													May 31 – October 14	32	\$17.60
Silverhorn Creek													June 15 – September 30	45	\$15.70
Waterfowl Lakes													June 21 – September 3	116	\$21.50
Rampart Creek													May 31 – October 14	50	\$17.60
Rocky Mountain House NHS - Historic Forts													May 14 – September 28	43	\$25.50
<b>JASPER NATIONAL PARK</b>															
Pocahontas													May 15 – September 24	140	\$21.50
Snaring													May 15 – October 7	63	\$15.70
Whistlers													Closed for construction in 2019	780	\$27.40 - \$38.20
Wapiti (summer)													May 1 – October 7	362	\$27.40 - \$32.30
Wapiti (winter)													October 7 – May 5	75	\$27.40 - \$32.30
Wabasso													May 1 – October 7	231	\$21.50 - \$27.40
Kerkeslin													May 15 – September 30	42	\$15.70
Honeymoon Lake													May 15 – September 24	35	\$15.70
Jonas													May 15 – September 24	25	\$15.70
Icefield Centre RV													May 1 – October 30	100	\$15.70
Icefield (tents only)													June 5 – October 14	33	\$15.70
Wilcox													June 5 – September 24	46	\$15.70

Reservations available at highlighted campgrounds and recommended from June 15 to Sept 15.

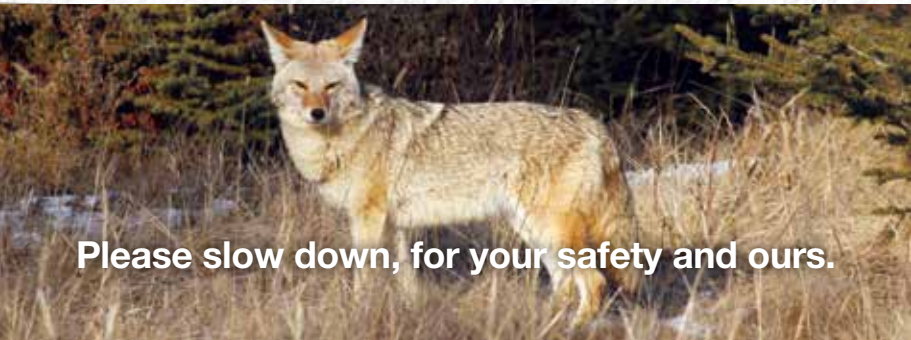
Campground is closed for facility upgrades. Check online for expected opening dates.



© Her Majesty the Queen in Right of Canada  
Catalogue No. R64-437/2019E-PDF  
ISBN: 978-0-660-28503-0



Take only pictures, leave only footprints.  
We hope to see you again soon!



Please slow down, for your safety and ours.

**FOR EMERGENCIES DIAL 911**  
(police, fire and ambulance)

Road reports: Visit [drivebc.ca](http://drivebc.ca) or [511.alberta.ca](http://511.alberta.ca)

Cell phone coverage is not reliable in all areas of the mountain parks.