

2017-2018



Getting Around Yoho National Park

What's Inside

- *Top 10 Things to Do*
- *Suggested Itineraries*
- *Maps*
- *Where to Camp*
- *Safety Information*

Egalement offert en français

© Zizka



Parks
Canada

Parcs
Canada

Canada

Connect With Nature



United Nations
Educational, Scientific and
Cultural Organization
Organisation
des Nations Unies
pour l'éducation,
la science et la culture



Canadian Rocky
Mountain Parks
inscribed on the World
Heritage List in 1984
Parcs des montagnes
Rocheuses canadiennes
inscrit sur la Liste du
patrimoine mondial en 1984

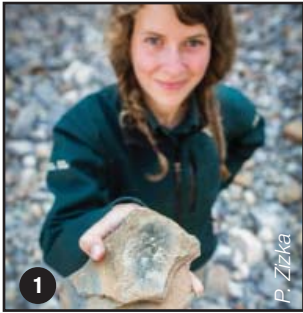
K. Smith

OUR STORY

During a celebrated expedition to explore the West, Dr. James Hector travelled ahead of the group, and became the first European to discover a steep mountain pass in 1858. After the surgeon's trusty steed knocked him over with a blow to the chest, the spectacular route was dubbed Kicking Horse Pass. Later, the Canadian Pacific Railway, whose transcontinental route travelled through the pass, set up restaurants at the base of Mount Stephen to avoid pushing heavy dining cars up the mountain. This laid the groundwork for creating the Mount Stephen Reserve, renamed in 1901 as Yoho National Park. Eight years later, a visiting scientist, Dr. Charles Doolittle Walcott, discovered the Burgess Shale fossils on Mount Wapta. These exquisitely preserved marine organisms offer a glimpse back more than 505 million years ago. With fossils designated as part of a UNESCO World Heritage Site, 36 peaks soaring above 3 000 m, the rambunctious Kicking Horse River and numerous breathtaking waterfalls, it is no surprise Yoho was named after a Cree expression meaning "awe and wonder."

A UNESCO WORLD HERITAGE SITE

Four of the mountain national parks—Banff, Jasper, Yoho and Kootenay—are recognized by the United Nations Educational, Scientific and Cultural Organization as part of the Canadian Rocky Mountain Parks World Heritage Site, for the benefit and enjoyment of all nations. Among the attributes that warranted this designation were vast wilderness, diversity of flora and fauna, outstanding natural beauty and features such as Lake Louise, Maligne Lake, the Columbia Icefield and the Burgess Shale.



1 **BURGESS SHALE GUIDED HIKES**

Meet your ancient ancestors and hold a piece of earth's history on a guided hike to the restricted Walcott Quarry or Mount Stephen fossil sites. Reservations are required. Visit reservations.pc.gc.ca to book your spot!



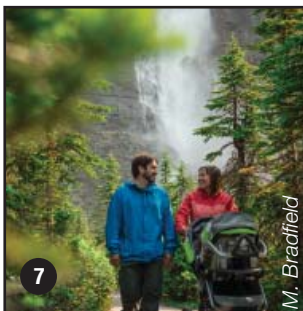
2 **CAMPING**

Tenting? RV-ing? Enjoy a family getaway in one of Yoho's four rustic campgrounds. Roast marshmallows, take a hike or wander through the community of Field. Yoho's campgrounds keep you close to the adventure!



3 **INTERPRETIVE PROGRAMS**

Why is Emerald Lake so green? How tall is Takakkaw Falls? What do fossils have to do with Star Wars™? Get the answers to these questions and more at one of many interpretive programs offered daily in July and August.



4 **VILLAGE OF FIELD**

Take an afternoon walk and experience Field's mountain hospitality. Stay in a unique guesthouse, pick out the perfect souvenir in one of the gift shops or enjoy the culinary delights of this charming community.



5 **EMERALD LAKE**

Admire incredible views of mountain peaks and wildflowers on an afternoon stroll around this gem-coloured lake. Pack a picnic lunch or go for a canoe ride to get a different perspective of the surrounding mountains.

6 **NATURAL BRIDGE**

Marvel at the force of the Kicking Horse River as it cascades under a naturally formed stone bridge. This rambunctious river takes its name from a near-fatal kick that stunned James Hector while exploring the area in 1858.

7 **TAKAKKAW FALLS**

Enjoy a scenic drive on the Yoho Valley Road. Then, cool off in the mist as you stand at the base of the thundering waters of one of the highest waterfalls in Canada. This is your #timetoconnect. Snap a selfie from the red chairs and share your adventure!

8 **SPIRAL TUNNELS VIEWPOINTS**

Watch trains snake through the Spiral Tunnels from the viewpoints on the Trans-Canada Highway or Yoho Valley Road. Discover how Yoho's towering peaks and steep hills have inspired the stories of Kicking Horse Pass National Historic Site.

9 **HIKING**

Lace up your hiking boots for an epic backcountry adventure! See Yoho from the perspective of the park's first wardens on the Paget or Mount Hunter fire lookout trails or take an afternoon stroll to Hamilton Falls.

10 **WAPTA FALLS**

At 30 metres (98 feet) high and 150 metres (492 feet) wide, this is the largest waterfall on the Kicking Horse River. Take a gentle 4.6 km (2.9 mile) return hike through verdant forests to a stunning viewpoint.

Suggested Itineraries



CFMR / D. Ziver

HALF-DAY ADVENTURES

TAKE A SCENIC DRIVE

Get off the Trans-Canada Highway and explore! Follow Emerald Lake Road and discover a jewel of the Canadian Rockies as you paddle, walk or ski around the magnificent **Emerald Lake**. From late June until early October, drive or bike the 13 km scenic Yoho Valley Road. Experience the power of **Takakkaw Falls**—one of the tallest waterfalls in Canada. Pack a picnic lunch or stop and watch the trains as they snake otop of themselves at the **Spiral Tunnels Viewpoints**.

STRETCH YOUR LEGS!

Enjoy an easy half-day hike to a peaceful backcountry lake. The whole family will enjoy the 6.2 km (3.9 mi) return hike through a mature forest to **Sherbrooke Lake**. Relax next to this glacier fed lake and take in the view of the surrounding mountain peaks. For an additional challenge, head east at the fork in the trail and climb to **Paget Lookout**. From this historic viewpoint, admire the view of Kicking Horse Pass and see why this was a crucial vantage point when watching for wildfires.

A FULL DAY OF FUN

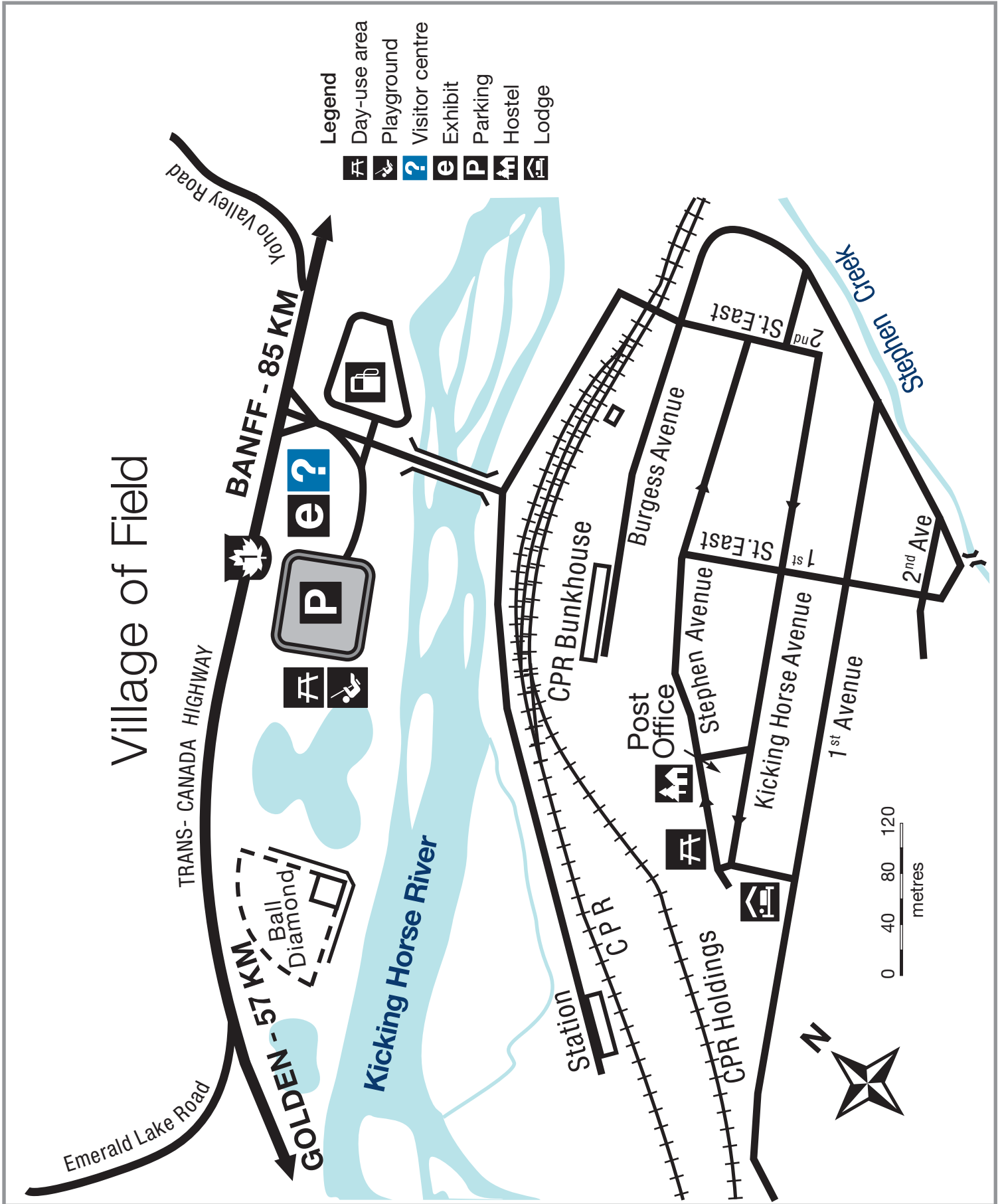
TAKE A WATERFALL TOUR

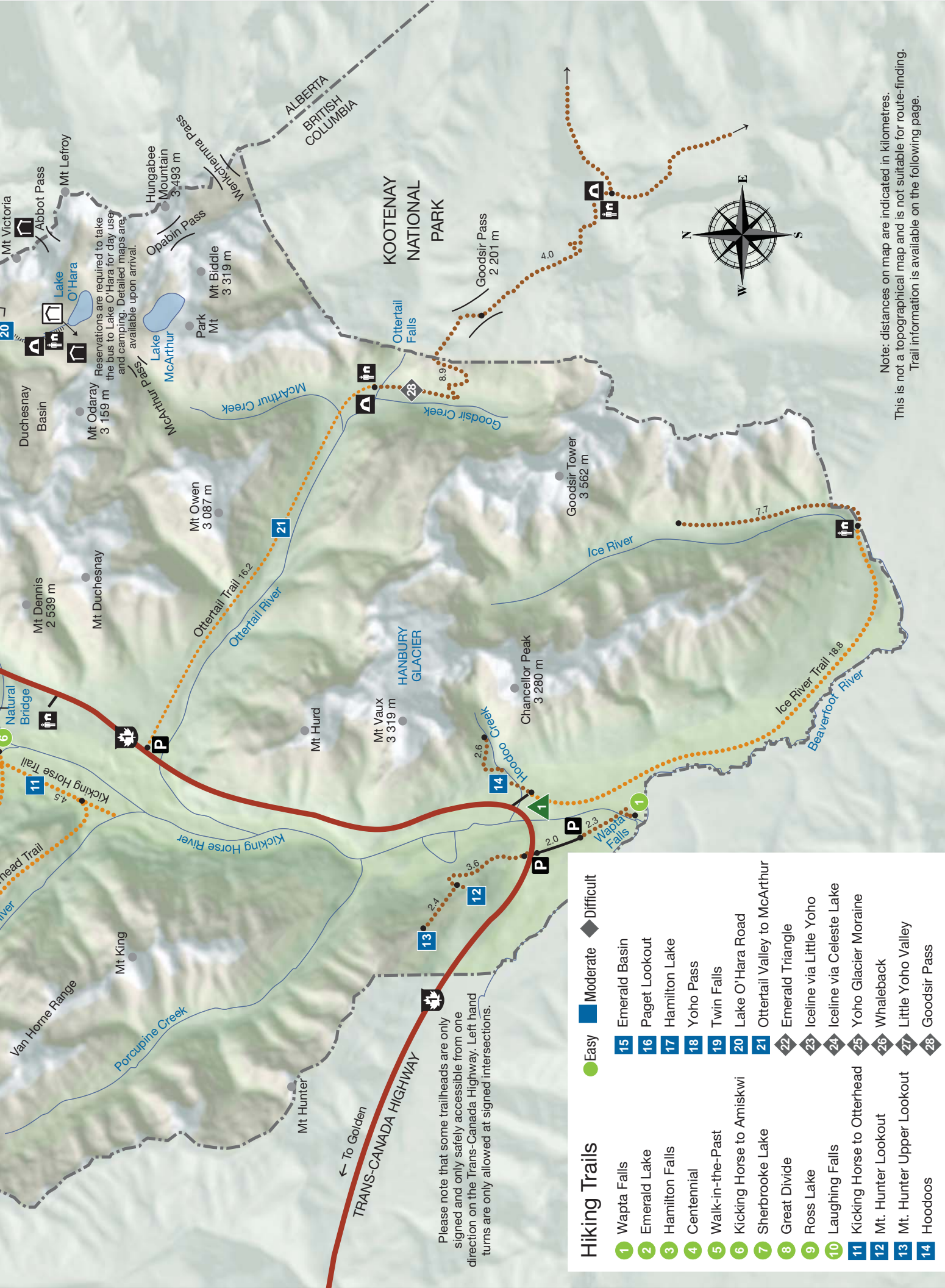
Explore five of Yoho's most impressive waterfalls on foot. Feel the cool mist on your face at **Takakkaw Falls** and snap a selfie from the red chairs before following the Laughing Falls Trail to **Point Lace Falls** and **Angel's Staircase**. Climb through a mature forest to **Laughing Falls**; then continue along this historic trail, first cut by the Canadian Pacific Railway, to **Twin Falls**. Here the double waterfalls tumble over a massive limestone cliff.

SNAP A PICTURE

Climb above the treeline and get a bird's eye view of Yoho National Park on the epic 17.5 km **Iceline Trail**. Beginning from the Takakkaw Falls Campground, follow the trail to **Laughing Falls**. Stop for lunch, then continue climbing through a mature forest to a subalpine meadow. Look down on **Takakkaw Falls** and stand amongst glaciers as you take in the expansive view of the Yoho and Kicking Horse valleys. Take a break at Yoho Lake and relax in the red chairs.

Village Map





Note: distances on map are indicated in kilometres.
 This is not a topographical map and is not suitable for route-finding.
 Trail information is available on the following page.

Please note that some trailheads are only signed and only safely accessible from one direction on the Trans-Canada Highway. Left hand turns are only allowed at signed intersections.

Hiking Trails

Trail Number	Difficulty	Trail Name
1	Easy	Wapta Falls
2	Easy	Emerald Lake
3	Easy	Hamilton Falls
4	Easy	Centennial
5	Easy	Walk-in-the-Past
6	Easy	Kicking Horse to Amiskwi
7	Easy	Sherbrooke Lake
8	Easy	Great Divide
9	Easy	Ross Lake
10	Easy	Laughing Falls
11	Easy	Kicking Horse to Otterhead
12	Easy	Mt. Hunter Lookout
13	Easy	Mt. Hunter Upper Lookout
14	Easy	Hoodoos
15	Moderate	Emerald Basin
16	Moderate	Paget Lookout
17	Moderate	Hamilton Lake
18	Moderate	Yoho Pass
19	Moderate	Twin Falls
20	Moderate	Lake O'Hara Road
21	Moderate	Ottertail Valley to McArthur
22	Difficult	Emerald Triangle
23	Difficult	Iceline via Little Yoho
24	Difficult	Iceline via Celeste Lake
25	Difficult	Yoho Glacier Moraine
26	Difficult	Whaleback
27	Difficult	Little Yoho Valley
28	Difficult	Goodsir Pass

Where to Hike

Type	Hiking Trail	Estimated time (return)	Distance (return)	Elevation Gain
Short Hikes	Wapta Falls	1.5 hours	4.6 km	gain / loss 30 m
	Emerald Lake	2 hours	5.2 km	minimal
	Hamilton Falls	30 minutes	1.6 km	minimal
	Centennial	45 minutes	2.5 km	minimal
	Walk-in-the-past	1.5 hours	3 km	90 m
	Sherbrooke Lake	2.5 hours	6.2 km	165 m
Half Day Hikes	Great Divide	2 hours	6 km	minimal
	Ross Lake	2 hours	6.4 km	100 m
	Laughing Falls	3 hours	8.8 km	125 m
	Mt. Hunter Lookout	3 hours	7.2 km	410 m
	Hoodoos	2.5 hours	5.2 km	325 m
	Paget Lookout	3 hours	7 km	520 m
Full Day and Overnight Hikes	Hamilton Lake	5 hours	11 km	850 m
	Yoho Pass	5 hours or 2 days	12.8 km	530 m
	Twin Falls	6 hours or 2 days	16.4 km	300 m
	Emerald Triangle	8 hours	19.7 km	880 m
	Iceline via Little Yoho	8 hours or 2 days	20.8 km	710 m
	Iceline via Celeste Lake	7 hours	17.5 km	695 m
	Whaleback	7.5 hours	21.3 km	700 m
	Little Yoho Valley	7 hours	18.6 km	520 m

● Easy
■ Moderate
◆ Difficult

Hiking trails are shown on previous page. Trail reports and hiking maps are available from the Yoho National Park Visitor Centre and at parkscanada.gc.ca/Yoho/trails.

Where to Camp

Campgrounds	Full Hook-up	Electrical	Sani Dump	Flush Toilets	Pit Toilets	Showers	Firepit	Cooking Shelter	Drinking Water	oTENTik	Interpretive Programs	Disabled Access	Open Dates	Sites	Prices
YOHO NATIONAL PARK															
1 Hoodoo Creek													June 22 - September 4	30	\$15.70
2 Takakkaw Falls (walk-in)													June 22 - October 9	35	\$17.60
3 Kicking Horse													May 18 - October 9	88	\$27.40
4 Monarch													May 4 - September 4	44	\$17.60

Highlighted campgrounds may be reserved.

PLANNING TO CAMP IN ANOTHER PARK? BOOK ONLINE OR CALL AHEAD FOR INFORMATION AND RESERVATIONS.

The mountain parks offer extraordinary camping experiences, ranging from full-service RV sites to pristine backcountry settings. Many campsites can be reserved and most fill up quickly. Call ahead or go online for availability and recommendations. Backcountry camping is only permitted at designated sites with a backcountry camping permit.

FRONTCOUNTRY: 1-877-RESERVE (737-3783) OR RESERVATION.PC.GC.CA
BACKCOUNTRY: 250-343-6783

Where to Camp

Campgrounds	Full Hook-up	Electrical	Sani Dump	Flush Toilets	Pit Toilets	Showers	Firepit	Cooking Shelter	Drinking Water	oTENTik	Interpretive Programs	Disabled Access	Open Dates	Sites
KOOTENAY NATIONAL PARK														
1 Marble Canyon													June 22 - September 4	61
2 McLeod Meadows													June 15 - September 18	88
3 Redstreak													May 1 - October 9	242
4 Crook's Meadow													Call 250-347-2218 for information on non-profit group camping reservations and fees.	1
BANFF NATIONAL PARK														
Tunnel Mt. Village I													May 11 - October 2	618
Tunnel Mt. Village II													Open year round	188
Tunnel Mt. Trailer													May 11 - October 2	321
Two Jack Main													June 22- September 5	380
Two Jack Lakeside													May 11 - October 2	74
Johnston Canyon													May 25 - September 25	132
Castle Mountain													May 25 - September 11	43
Protection Mountain													To be determined	72
Lake Louise Tent													May 30 - September 28	206
Lake Louise Trailer													Open year round (starting May 1 2017)	189
Mosquito Creek													June 1 - October 10	32
Silverhorn													To be determined	45
Waterfowl Lakes													June 24 - September 5	116
Rampart Creek													June 1 - October 10	50
Rocky Mountain House NHS - Historic Forts													May 10 - September 30	43
JASPER NATIONAL PARK														
Pocahontas													May 17 - September 17	140
Snaring													May 17 - September 24	66
Whistlers													May 3 - October 9	781
Wapiti (summer)													May 3 - October 9	364
Wapiti (winter)													October 10 - May 1, 2018	93
Wabasso													May 17 - September 17	231
Kerkeslin													June 21 - September 4	42
Honeymoon Lake													May 17 - September 17	35
Jonas													May 17 - September 17	25
Icefield Centre RV													March 31 - October 30	100
Icefield (tents only)													May 17 - October 9	33
Wilcox													May 31 - September 17	46

Highlighted campgrounds may be reserved.

Stay Safe and Enjoy

MOUNTAIN SAFETY

Unpredictable mountain weather can change road and trail conditions instantly and wildlife can be anywhere, any time. These simple precautions will help ensure you have a safe and enjoyable visit.



- Visit drivebc.ca and 511.alberta to check road conditions prior to heading out.
- Obey speed limits and watch for wildlife on the roadside.
- Stay on designated roads, trails and other hardened surfaces.
- Keep a 'Bare' campsite. Visit parksCanada.gc.ca/bare-campsite.
- Make noise on the trails and let wildlife know you are coming.
- Research and plan overnight trips including potential trail restrictions and closures, avalanche conditions and mandatory backcountry permits. Visit parksCanada.gc.ca/knp-backcountry and avalanche.pc.gc.ca for safety tips.
- Let someone know your plans. Cell phones are not reliable in the wilderness.
- Keep clear of cliffs, ledges and fast moving water.

PARK REGULATIONS

Following park regulations while enjoying your national parks will help protect you, the land and our wildlife:



- Keep pets on a leash and under control at all times. Please collect and properly discard pet feces.
- Take only photographs. It is illegal to pick flowers, mushrooms, cut down trees, branches, remove cultural artifacts or fossils, or otherwise cause damage to natural objects or living things.
- Be considerate of your neighbours. Liquor consumption is prohibited in public places, day-use areas, and during set periods in campgrounds. Respect quiet hours and liquor bans in campgrounds.
- Stay out of closed areas. Area closures or activity restrictions are implemented when visitors are at risk or when wildlife requires additional protection. Signs indicate the areas impacted.
- Be careful with fire. Fires are permitted only in designated areas with fireboxes or firepits. Extinguish fires completely. Do not use deadwood, bark or branches for fuel. Report wildfires immediately.
- Buy fishing permits. Anglers require a national park fishing permit, available at Parks Canada visitor centres. Provincial licenses are not valid in national parks.
- Going boating? Motors are not allowed on most lakes.
- Motorized off-road travel is not permitted.



THE CANADA NATIONAL PARKS ACT

Park Wardens are responsible for enforcing park regulations as required by the *Canada National Parks Act*. To report national park violations, call 24 hours a day, 7 days per week.

1-888-927-3367 (Banff, Yoho, Kootenay and Waterton Lakes)

1-877-852-3100 (Jasper, Mount Revelstoke and Glacier)

Visit pc.gc.ca/mtnregulations

Violators will be charged, be required to appear in court and could pay fines of up to \$25 000.



WILDLIFE IN YOHO NEED YOUR HELP

National parks help protect uniquely Canadian landscapes and the ecosystems that wildlife depend on for their survival. When visitors disturb or entice wildlife, the natural character of national parks diminishes. Parks Canada staff make special efforts to ensure your safety and protect wildlife in national parks. By learning more about wildlife you can help ensure your wildlife encounters are positive for both you and the wildlife.

Human Food Kills Wildlife



Wildlife quickly find any food, scented items or garbage that is left unattended. Eating these unnatural foods teaches the wildlife to approach people for an easy meal.



Once wildlife develop a taste for human food, they often become aggressive in their search for more. This places you and others in danger. These wild animals will come into your picnic site or campsite in search of food or garbage that is not properly stored.

Wildlife that eat human food or garbage become aggressive with people. This puts both people and wildlife at risk of being hurt or killed.

Do Not Litter, Put Garbage in its Proper Place



Wildlife will feed on garbage: littering means feeding wildlife. Ensure all garbage and recycling are disposed in wildlife proof bins immediately.

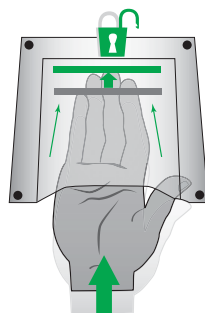
- If you see garbage or recycling left outside in Yoho National Park, please inform Visitor Services at 250-343-6783 (see hours on pg 15).
- After hours, please call Parks Canada Banff Dispatch at 403-762-1470.



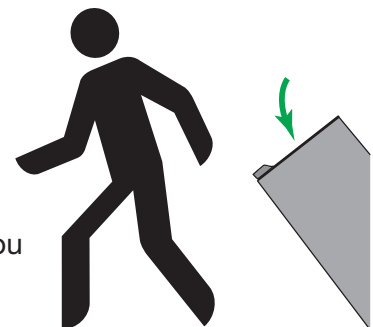
How to Use the Wildlife Proof Garbage Bins

The garbage bins in Banff National Park are wildlife proof.

1) To use, place your hand inside the handle and push to the very back to release the latch.



2) Always ensure the lid is closed tight after you are finished.





Protecting Wildlife

Properly Store All Food and Scented Items

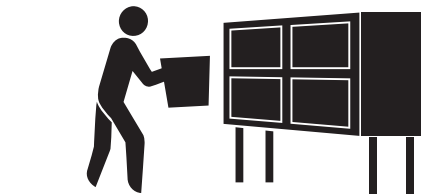
A clean campsite or picnic area does not have anything that will attract wildlife (food, garbage, food-related or scented items). Never leave these items where wildlife can access them:



ALL food-related and scented items **MUST** be stored away in your car,



a hard-sided trailer or RV,



or in a campground food storage locker.

- Coolers – full or empty
- Food – wrapped, unwrapped, or in containers
- Garbage/wrappers
- Dishes/pots/cutlery – clean or dirty
- Empty beverage containers
- Pet food/bowls – full or empty
- Bottles/cans – open or unopened
- Scented products – such as shampoo, toothpaste, candles, citronella, dish soap, sunscreen, lip balm, dish towels
- Barbecues – clean or dirty
- Any other items used for food preparation or that have a smell or scent

Never leave food or scented items unattended or in a tent for any amount of time.

Always Keep Your Campsite or Picnic Area Clean

When you are done cooking or eating at your picnic table, all food, food-related and scented items **MUST** be stored:

- In a hard-sided vehicle, trailer or motor home (not in tents or tent trailers)
- In campground food storage lockers

Non-food items such as lawn chairs, tables or lanterns may be left outside. Items such as coolers, cook stoves, dish towels and toothpaste must be properly stored.

Dump dish water down outdoor sinks or at the sani-dump in campgrounds.



All food, food-related and scented items **MUST** be stored away.



Cooler, stove and dishes (dirty or clean) **MUST** be stored away.



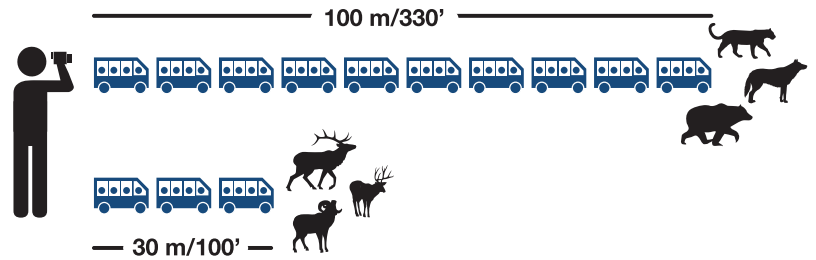
Non-food items may be left outside.



Do Not Approach or Entice Wildlife. Give Them Space.



Do not surround, crowd or follow an animal. Use zoom or show the animal in its natural surroundings and crop the image later.



Photograph wildlife from a vehicle or safe distance

- 30 metres for deer, elk and moose
- 100 metres for cougars, bears, coyotes and wolves



Don't make sounds to startle animals to get a better photo.

If you make them move, you are too close.

If You See Wildlife By the Road

Always slow down.

If you do stop (not recommended for the safety of wildlife):

- Be aware of the traffic around you.
- Pull over where it is safe to do so.
- Use your hazard lights to alert other drivers.
- **Stay in your vehicle.**
- Watch for a few moments, take a quick photo, and then move on.
- If a traffic jam develops, move on. It is unsafe for people and wildlife.



Staying Safe with Pets

- Pets must be kept on a leash at all times.
- Pets attract wildlife and may be attacked by carnivores (bears, cougars, wolves and coyotes) if they are left outside unattended, especially at night.
- Do not leave pet food out. If you walk away, store food dishes – empty or full. Always store food dishes at night.

Keeping Your Children Safe

- Bears, cougars, wolves and coyotes may be curious about children and can attack them.
- Keep children in immediate sight and within close reach at all times.
- Children should avoid playing in or near areas with tall grass or dense bushes.
- Never allow children to pet, feed or pose with wildlife.

Mountain Stories



Parks Canada

MEET PARKS CANADA'S INTERPRETERS

Do you want to discover more about the uniqueness of Yoho's natural and cultural heritage? Friendly and knowledgeable interpreters are here to help you connect to these special places protected by Parks Canada.

Watch for interpreters at campgrounds and popular day-use areas in Yoho National Park in the summer months.

Check parksCanada.gc.ca/Yoho-interpretation for more information on interpretive experiences in Yoho.

WILDLIFE VIEWING TIPS

Your best chance of observing wild animals is by giving them space to feed, rest and keep their young safe. Help keep them wild:

- **Stay at least three (3) bus lengths (30 m)** away from elk, deer and bighorn sheep.
- **Stay at least ten (10) bus lengths (100 m)** away from bears, cougars and wolves.
- **NEVER feed or approach wildlife.**
- **Keep pets under control and on a leash** at all times.
- Keep children in sight and within close range at all times.
- Consider carrying bear spray when on the trails. Keep it accessible and know how and when to use it.

For further information pick up a copy of *Keep the Wild in Wildlife* at a Parks Canada Visitor Centre or visit parksCanada.gc.ca/bears-and-people

To report wolf, bear or cougar sightings call 403-762-1473.



Peter Essick



2017

Canada turns 150 in 2017! Parks Canada's treasured natural and historic places will host special programs and events to commemorate the milestones that contributed to the Canada of today, strong and free. Experience what inspired Canada!

parksCanada.gc.ca



Want More?

WANT MORE INFORMATION ABOUT YOHO NATIONAL PARK?

Find us online at:  facebook.com/YohoNP,  twitter.com/YohoNP or parksCanada.gc.ca/Yoho.

These detailed brochures are available online or for pick-up at a Parks Canada visitor centre.



Stop by the Friends of Yoho store in the Yoho National Park Visitor Centre for souvenirs, guidebooks and topographical maps.

WANT MORE INFORMATION ON OTHER MOUNTAIN NATIONAL PARKS?

BANFF

Banff Visitor Centre: 403-762-1550
Lake Louise Visitor Centre: 403-522-3833
pc.gc.ca/banff

Lake Louise Visitor Centre hours:
Jan 1 - April 30: 9:00 - 4:30 7days/week
May 1 - May 30: 9:00 - 5:00 7days/week
June 1 - Sept 30: 8:30 - 7:00 7days/week
Oct 1 - Dec 31: 9:00 - 5:00 7days/week

Banff Lake Louise Tourism: 403-762-8421
banfflakelouise.com

JASPER

Jasper Information Centre: 780-852-6176
pc.gc.ca/jasper

Tourism Jasper: 780-852-6236
jasper.travel

KOOTENAY

Kootenay Visitor Centre: 250-347-9505
pc.gc.ca/kootenay

Kootenay Visitor Centre hours:
May 18 - June 18: 9:00 - 5:00 7days/week
June 19 - Sept 4: 9:00 - 7:00 7days/week
Sept 5 - Oct 8: 9:00 - 5:00 7days/week
Oct 9 - closed for winter

Tourism Radium/Radium Chamber of Commerce:
1-888-347-9331
RadiumHotSprings.com

YOHO

Yoho Visitor Centre: 250-343-6783
pc.gc.ca/yoho

Yoho Visitor Centre hours:
Jan 1 - April 30: 9:00 - 4:30 7days/week
May 1 - May 30: 9:00 - 5:00 7days/week
June 1 - Sept 30: 8:30 - 7:00 7days/week
Oct 1 - Dec 31: 9:00 - 5:00 7days/week

Accommodations and attractions in Field:
field.ca
Tourism Golden: 1-800-622-4653
tourismgolden.com

MOUNT REVELSTOKE AND GLACIER

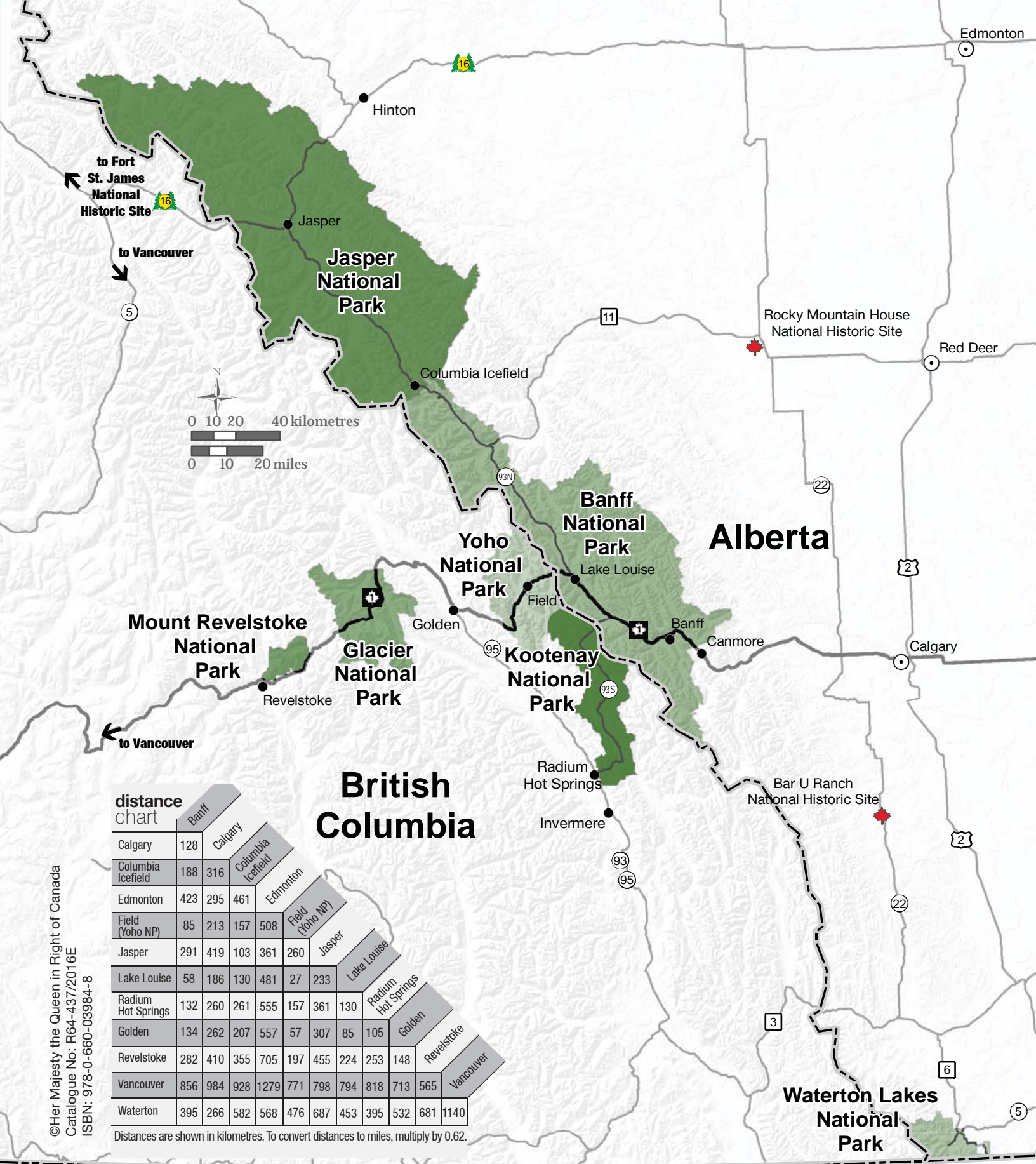
Rogers Pass Discovery Centre: 250-837-7500
pc.gc.ca/glacier • pc.gc.ca/revelstoke

Tourism Revelstoke: 1-800-487-1493
seerevelstoke.com

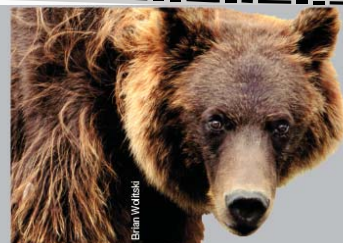
WATERTON LAKES

Waterton Lakes Visitor Centre: 403-859-5133
pc.gc.ca/waterton

Waterton Chamber of Commerce
mywaterton.ca



©Her Majesty the Queen in Right of Canada
 Catalogue No: R64-437/2016E
 ISBN: 978-0-660-03984-8



Please slow down, for your safety and ours.



FOR EMERGENCIES DIAL 911
 (Police, Fire and Ambulance)

Road reports: Visit 511.alberta.ca or Drivebc.ca

Cell phone coverage is not reliable in all areas of the mountain parks.