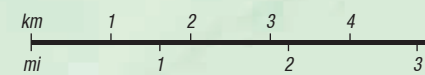




Waterton Lakes National Park

Please visit our website for updates: www.parkscanada.ca/waterton



ALBERTA

CASTLE WILDLAND PROVINCIAL PARK

Newman Peak 2517 m
Mount Glendowan 2673 m
Cloudy Ridge 2567 m

Mount Dugarvan 2609 m

Mount Galwey 2359 m

Bellevue Hill 2114 m

ALBERTA

Mount Blakiston 2940 m

Mount Hawkins 2689 m

Mount Lineham 2725 m

Mount Rowe 2468 m

Mount Carthew 2644 m

Mount Alderson 2693 m

Mount Richards 2428 m

Mount Boswell 2444 m

Mount Custer 2707 m

BRITISH COLUMBIA

AKAMINA KISHINENA PROVINCIAL PARK

CANADA
UNITED STATES

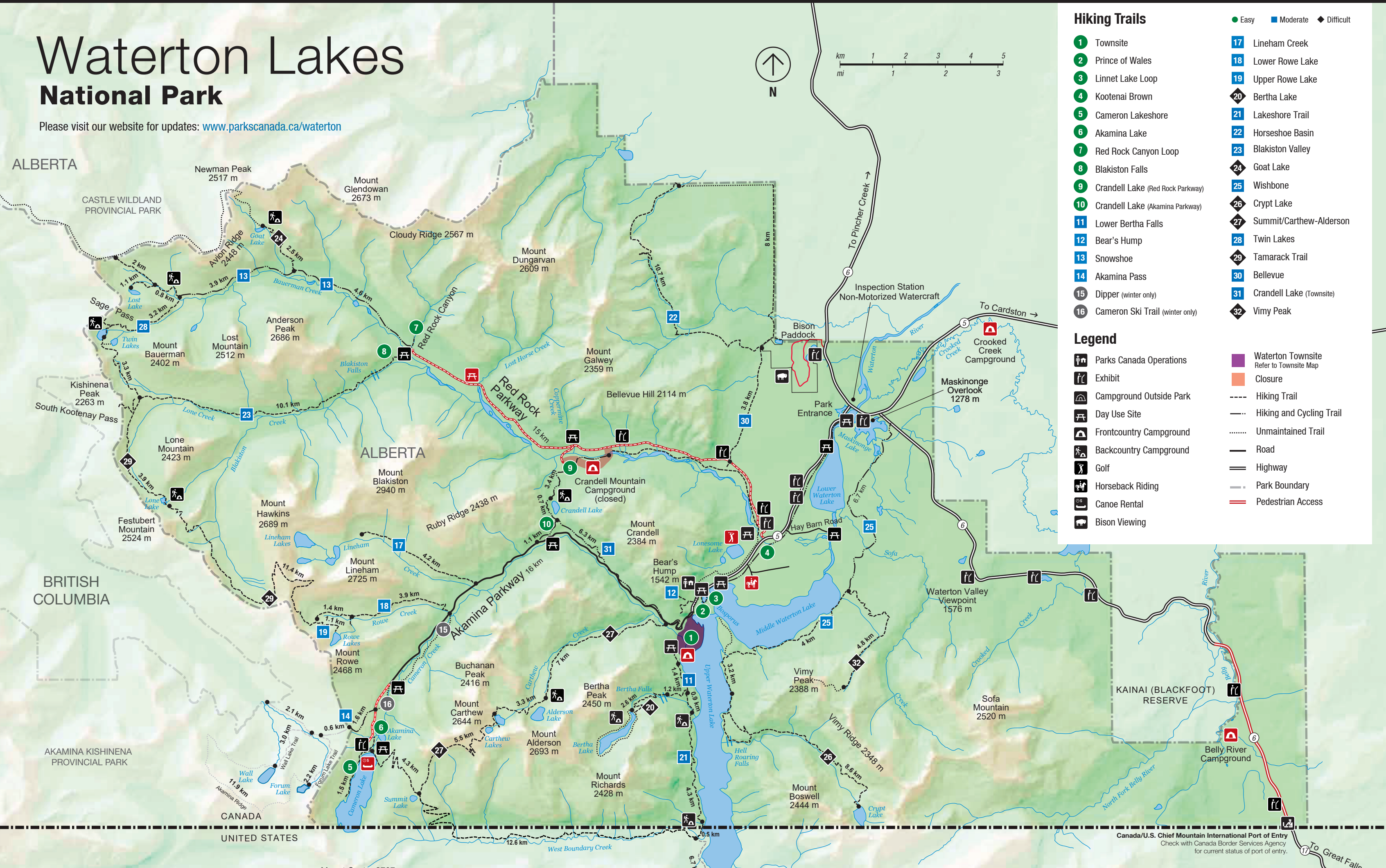
Hiking Trails

- Easy
- Moderate
- ◆ Difficult

1 Townsite	17 Lineham Creek
2 Prince of Wales	18 Lower Rowe Lake
3 Linnet Lake Loop	19 Upper Rowe Lake
4 Kootenai Brown	20 Bertha Lake
5 Cameron Lakeshore	21 Lakeshore Trail
6 Akamina Lake	22 Horseshoe Basin
7 Red Rock Canyon Loop	23 Blakiston Valley
8 Blakiston Falls	24 Goat Lake
9 Crandell Lake (Red Rock Parkway)	25 Wishbone
10 Crandell Lake (Akamina Parkway)	26 Crypt Lake
11 Lower Bertha Falls	27 Summit/Carthew-Alderson
12 Bear's Hump	28 Twin Lakes
13 Snowshoe	29 Tamarack Trail
14 Akamina Pass	30 Bellevue
15 Dipper (winter only)	31 Crandell Lake (Townsite)
16 Cameron Ski Trail (winter only)	32 Vimy Peak

Legend

	Waterton Townsite Refer to Townsite Map
	Closure
	----- Hiking Trail
	----- Hiking and Cycling Trail
	----- Unmaintained Trail
	----- Road
	===== Highway
	----- Park Boundary
	===== Pedestrian Access



Canada/U.S. Chief Mountain International Port of Entry
Check with Canada Border Services Agency for current status of port of entry.