

SHOPPING

- 8 Village Gift Shop:** At the Bayshore Inn. Fine china, souvenirs, film, postcards, wildlife books, t-shirts, hats, jewelry and more. Stop by and browse.
- 8 "Bear Spirits" Beer & Wine Store:** For cold beer ice, pop, & souvenirs. Ph. (403) 859-2211 Ext. 308
- 11 Beargrass Boutique:** Gift shop has an excellent selection of T-shirts, souvenirs and casual wear Located Beside New Frank's Restaurant on Waterton's main street.
- 12 Borderline Books and Coffee:** Come browse our book and gift selection and enjoy a cappuccino and dessert. 305 Windflower Avenue. Ph. (403) 859-2284.
- Evergreen Gifts:** Linens, Canadian gifts, Beanie Babies. Ph. (403) 859-2345.
- 15 Trail of the Great Bear Gift & Travel:** Authentic native and local gifts, regional attraction tickets, hiking guides and books for outdoor enthusiasts. Travel information centre. Ph. 859-2009.
- 17 Akamina Clothing, Gifts and Collectibles:** Souvenir T-shirts & sweatshirts, unique gifts and jewellery. Large selection of books and Canadian souvenirs. New for '98 - "The Back Room" featuring local crafts, country candles, old fashioned dress, country pictures & antiques. 108 Waterton Avenue. Ph. 859-2361.
- 18 Pat's:** Cigars. Premium cigars from around the world. Quality gifts, shirts, sweaters and souvenirs. Great supply of fishing tackle, bike supplies, RV items. Film, housewares and much more. Cash machine available. 224 Mt. View Rd. Ph. 859-2266.
- 19 Willock & Sax Ltd. Gallery**
305 Windflower Ave. Box 72, Waterton Park, AB, T0K 2M0
Ph. (403) 859-2274
2000 Season: May 1 - October 16 - 7 days/week.
We represent Canadian contemporary and historical artists from Alberta, British Columbia and Ontario. Our gallery features fine art sculpture, black & white photographic prints, watercolours, oils, acrylics, lithographs, lino-block prints, ceramics, jewellery and glass. We also have a selection of Alberta music and Canadian art magazines and books.
- 20 Caribou Clothes:** On Waterton Avenue. Hand-crafted sheepskin, leather & fur clothing and accessories. Manufactured locally. Quality gift items. Ph. 859-2346.
- 25 Founder's of Canada:** A unique mix of classic gifts, apparel, souvenirs, plush animals and other collectibles. Located on the corner of Cameron Falls Drive and Windflower Avenue, across from the movie theatre.
- Angel's Country Creations**
Box 146 Waterton Park, AB, T0K 2M0, Ph. (403) 653-3111
Located at the east entrance to Waterton Lakes National Park on Highway #5. Featuring Crafts, Antiques and unique gifts.

THINGS TO SEE AND DO IN WATERTON

SCENIC DRIVES:

The **Entrance Road** provides 8 kilometres (5 miles) of magnificent views that beautifully illustrate the Park's theme, "where the mountains meet the prairie." Colorful prairie flowers and grasses and the glittering blue chain of the Waterton Lakes are set against a mountain backdrop. The sight of the historic Prince of Wales Hotel, on a knoll above the lakes, indicates you will soon arrive at our lakeside townsite.

The **Akamina Parkway** begins near the townsite and runs for 16 km (10 mi.) along the Cameron Valley. Points of interest include the site of western Canada's first producing oil well, the Oil City site and scenic Cameron Lake.

The **Red Rock Parkway** meanders over rolling prairie and through the Blakiston Valley. It ends at the strikingly colored rocks and cascading creeks of Red Rock Canyon, a distance of 15 km (9 mi.). The drive features views of magnificent mountains, including Mt. Blakiston, the Park's highest peak.

The **Chief Mountain Highway** is the primary route between Waterton Lakes and Glacier National Parks. The highway climbs from the grasslands near Maskinonge Lake to a viewpoint giving a magnificent vista of the Front Range of the Rockies and Waterton Valley. Enroute from the border crossing, the road traverses fields and forests, dotted with wetlands created by Crooked Creek.

The **Bison Paddock**, near the north entrance to the Park off Highway 6, features a small herd of plains bison, maintained to commemorate the larger herds that once roamed freely in this area. The bison can be seen while driving a narrow road through the paddock. Please do not leave your vehicles. The road is not suitable for vehicles with trailers.

OTHER ATTRACTIONS:

Cameron Falls, located in the townsite, is a picturesque waterfall, created as Cameron Creek falls from its valley into the deeper Waterton Valley.

Goat Haunt, located in Glacier National Park at the south end of Upper Waterton Lake, is accessible from Waterton by both trail and boat. Goat Haunt features an International Peace Park Pavilion and a U.S. ranger station. Visitors staying overnight must report to a Ranger at Goat Haunt.

The **Akamina Pass Trail** leads from the Akamina Parkway in Alberta to British Columbia's Akamina-Kishinena Provincial Park. Backcountry campsgrounds and a Ranger Station are located near Wall Lake. A British Columbia fishing license is required and may be purchased only at the Waterton Visitor Reception Centre. Information is available from B.C. Parks, Ph. (604) 422-3212.

Wildlife and Wildflowers are abundant. Fall is probably the best time for wildlife watching. The larger animals come down from their summer ranges and waterfowl are on their migratory routes through the Park. Bears, deer, elk and bighorn sheep can be seen in the prairie portions of the Park. Sheep and deer frequent the townsite.

The Park's diversity of habitats is home to a great variety of birds. The **Maskinonge area** is particularly rich in birdlife. In spring and summer, look for birds around Linnet Lake, Cameron Lake and along the Wishbone Trail.

Wildflowers can be seen in the Park at almost any season except winter. In spring and summer, the prairies are particularly blessed with flowers. In the late summer and early fall, wildflowers are blooming at the higher elevations.

RECREATIONAL ACTIVITIES:

Waterton offers a variety of hiking trails, for almost anyone's ability and preferences. Boating, scuba diving and board sailing are popular sports in Upper Waterton Lake. You may rent boats at Cameron Lake. Fishing is permitted in most Park waters, with an appropriate license. Ask at the Visitor Reception Centre.

Waterton has an 18-hole golf course, horse riding facilities, public tennis courts, a ball field and two children's playgrounds. In winter, cross-country skiing and snowshoeing are popular.

INTERPRETATION SERVICES:

All visitors are invited to participate in personal interpretive programs offered in the Park; ranging from evening theatre programs to in-depth Heritage Education Programs. A cruise boat offers interpretive tours of Upper Waterton Lake, and other private interpretation services are also available. Check for details at the Visitor Reception Centre or ask for a program schedule. The Waterton/Glacier Guide, a joint International Peace Park newspaper, also provides details about the Park including information on wildlife, safety, new initiatives, special events and services. These free publications are available at the Park Gate, the Visitor Reception Centre, and the Heritage Centre.

Interpretive signs are found along all Park roads. There are special exhibits at the Chief Mountain Road lookout, the Maskinonge Overlook, Red Rock Canyon, and Cameron Lake. In the townsite, exhibits are enjoyed in the International Peace Park Pavilion and the Waterton Heritage Centre.

Watch for signs along Park roads inviting you to tune in to a Park radio station for information and entertaining messages. Pamphlets and publications describing various aspects of the Park are available at the Visitor Reception Centre and the Waterton Heritage Centre.

LIGHT MEALS & TREATS

- 7 Good Earth Deli:** At The Waterton Lakes Lodge. Stock up for your trail lunch or mountain picnic. Daily freshly baked goods. Several varieties of sandwiches & other light meals.
- 14 The Waterton Bagel & Coffee Co.:** Full espresso menu, whole bean coffee, low fat muffins & biscotti, smoothies, fresh juice & other baked goodies. Located in the theatre.
- 14 Summerthoughts Ice Cream Shop:** Featuring Foothills Creamery ice cream. Sundays, floats, fresh waffle cones, shakes (and espresso shakes too!) Located in the theatre. Ph. 859-2264.
- 18 Pat's:** Coffee, muffins and sandwiches. Mix & match for your trail lunch or picnic snack. Cash machine available. "On the Corner" 224 Mt. View Rd. Ph. 859-2266.
- 20 Big Scoop Ice Cream Parlour:** Hard/soft ice cream, yogurt. 26 flavours. On Waterton Avenue. Ph. 859-2346.
- 22 Welch's Chocolate Shop:** In Banff for over 30 years - now delighted to serve Waterton. Homemade fudge. Chocolate and candy from all over the world. Pastries. Ice Cream. Ph. 859-2363.

Burgers & Bytes: Best burgers in southern Alberta. Try our Chief Mountain Burger and spicy fries. Soft ice cream; creamy shakes. Drive thru, take out or eat in. On the Waterton Highway, in Cardston.

Cameron Lake Boat Rentals: Confectionary, ice cream & hot coffee provided in a spectacular mountain setting at Cameron Lake. Open daily from 7:30 a.m. to 7:30 p.m.

CANADIAN MONEY/POSTAGE

The exchange rate on U.S./Canadian dollars makes a trip to Waterton Park very affordable. Banks, money exchanges, & most businesses accept U.S. currency & travellers checks at fair exchange rates.

All mail sent from Canada, regardless of destination, must carry Canadian postage, available at the Waterton Post Office and from local businesses.

WATERTON PARK CHURCHES

All Saints Anglican Episcopal Church
Windflower Avenue - Sundays at 11a.m.

Church of Jesus Christ of Latter Day Saints
Windflower Avenue - Sundays

Our Lady of Mt. Carmel Catholic Church
Fountain Avenue - Sundays at 11a.m.

United Church
Clematis Ave - Sundays at 11a.m.-closed mid-Sept. to Mid-May

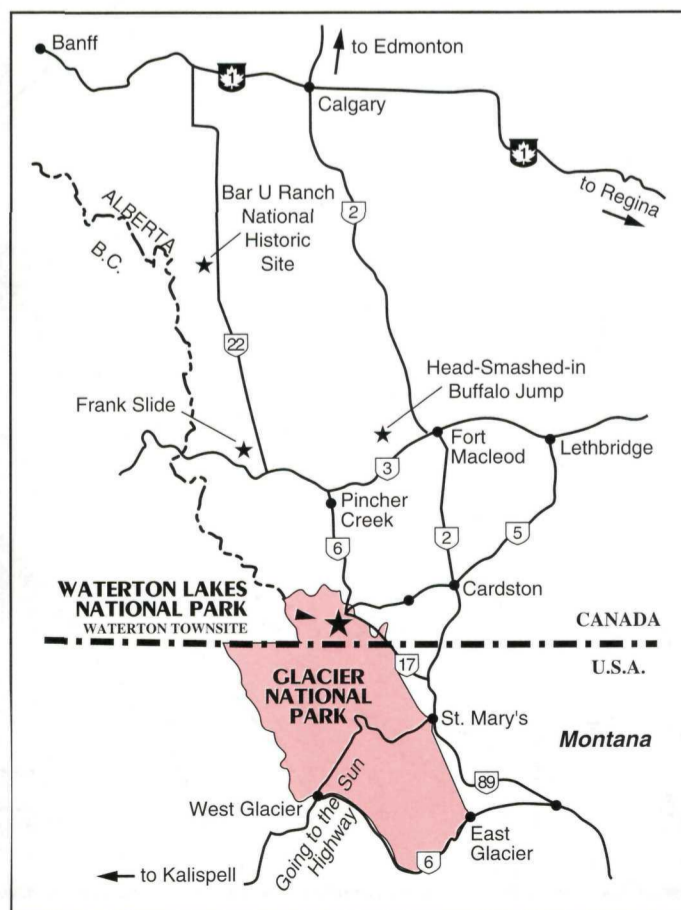
TRAVEL INFORMATION

- 159 miles (264 km or approximately 3 hours drive) from the Olympic City, Calgary, Alberta.
- 78 miles (130 km or approx. 1 hour, 15 minutes drive) southwest of Lethbridge, Alberta.
- 40 miles (60 km or approx. 3\4 hour drive) north of Glacier Park entrance at St. Mary, Montana.
- Airports at Calgary and Lethbridge, Alberta; Kalispell and Great Falls, Montana. Car rentals at these cities and Waterton.

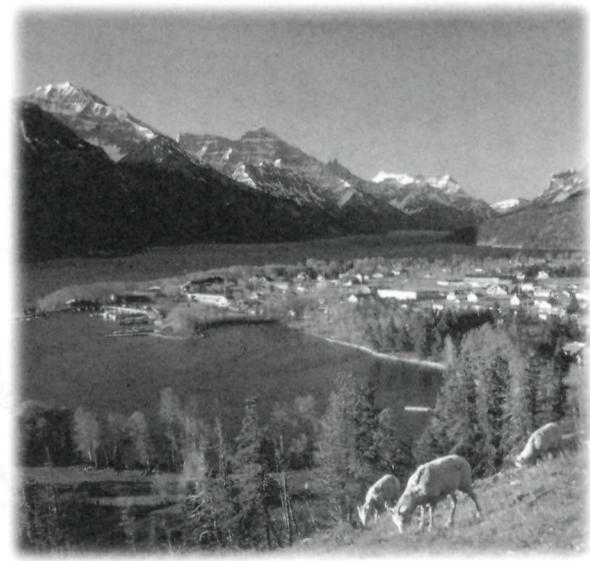
INTERNATIONAL PORTS OF ENTRY

Chief Mountain, Alberta & Montana
May 15 to 31 - 9:00 a.m. to 6:00 p.m.
June 1 to Labour Day -
7:00 a.m. to 10:00 p.m.
Day after Labour Day (Sept. 5)
to Sept. 30 - 9:00 a.m. to 6:00 p.m.

Carway, Alberta
Peigan, Montana
Year Round
7 a.m. - 11 p.m. Daily



WATERTON LAKES NATIONAL PARK



VISITORS GUIDE

Published by
Waterton Park Chamber of Commerce & Visitors Association
P.O. Box 5500
Waterton Lakes National Park
Alberta, Canada T0K 2M0
(403) 859-5133 (summer)
(403) 859-2224 (winter)

<http://parksCanada.pch.gc.ca/waterton>
www.watertonchamber.com

In co-operation with
Parks Canada

Canada

Printed in Canada For Free Distribution
Également offert en français

VISITOR SERVICES

Alpine Stables: View the scenery, the wildlife and the wildflowers - on horseback. For novice riders as well as experienced. Hourly or daily rates, pack trips, more. Open 9 to 5. Ph. 859-2462.

1 Jammer Tours: Transportation between the Prince of Wales Hotel and various locations in Glacier National Park aboard historic "Reds" touring buses. Ph. 859-2231.

7 Waterton Spa and Recreation Centre: At the Waterton Lakes Lodge. Fitness equipment, spa, massage therapy, indoor swimming pool. Swimming programs available. Open to the public. Children 12 and under must be accompanied by an adult. Admission fee. Ph. 859-2151.

8 Waterton Video Stop: Largest selection of VHS videos, VCR machines, cameras. At Bayshore Inn.

12 Bear Paw Massage Therapy: Specializing in relaxation & therapeutic massage, aromatherapy, reflexology, reiki, craniosacral therapy. Ph. 859-2070.

15 Trail of the Great Bear: An international scenic tour linking Greater Yellowstone, Glacier-Waterton and Banff-Jasper. For FREE adventure directory write Box 142, Waterton, AB. Ph. 859-2663.

18 Pat's Cycle Rental: Mountain bikes, surreys, motor scooters and strollers for rent, by the hour or day. Bicycle sales & service. Bike tires, tubes, accessories. Cash machine avail. Mountview Road. Ph. 859-2266.

18 Pat's CAA \ AAA Emergency Road Service: MOHAWK ethanol-blended fuel, propane. Minor auto repairs done on the spot. Hoses, belts, etc. Cash machine available. Ph. 859-2266.

21 Crypt Lake Water Shuttle Service: To Crypt Lake trailhead, rated a #1 hike in Canada. Spectacular water-falls and a mountain tunnel are two of the highlights of this unique trail. Call 859-2362.

21 Hikers' Water Shuttle Service: To Goat Haunt, Montana for hikes to Kootenai Lakes, Goat Haunt Overlook, Rainbow Falls, Janet Lake, Francis Lake and other trails on Waterton Lake. Ph. 859-2362.

21 Marina Boat Mooring Service: Dock your boat for a day, week, month or the entire season at Waterton Marina. Box 126 Waterton. Ph. 859-2362.

21 Waterton Shoreline Cruises: View wildlife, spectacular mountain scenery as you cruise from Canada to USA, aboard Coast Guard Inspected vessels. Informative, interpretive guides. Ph. 859-2362

23 Waterton Heritage Centre: Exhibits, art gallery, field courses, park info, books. Phone \ fax 859-2624

or 859-2267. Mail order books - Box 145, Waterton Natural History Association.

Cameron Lake Boat Rentals: Canoe, rowboat or paddleboat Cameron Lake on the Continental Divide. Enjoy the beauty, magnificent scenery, wildlife watching, fishing or just relax. Guided interpretive wildlife watching. Fishing tackle and confectionery. Open daily 7:30 a.m. to 7:30 p.m..

Great Canadian Barn Dance & Family Resort: Country lodge & cottages. Double & family sleeping rooms. Indoor pool and hot tub. Conventions and retreats. 30 min. drive from Waterton. Ph. (403) 626-3407.

Mountain Meadow Trail Rides: Wilderness horseback adventure, trail rides, overnight pack trips, riding lessons, cattle drives and ranch activities. Abundant wildlife and spectacular scenery on privately owned land adjacent to the park. Ph. (403) 653-2413. Box 38 Mountain View, Alberta T0K 1N0.

13 Tamarack Village Square Business & Currency Services: ATM cash machine. Money exchange. Fax. Accommodation referrals. Info centre. Trip planning assistance

Waterton Outdoor Adventures: Licenced national park hiking guides. Specialize in high alpine scrambles and ridge walks. Interpretive walks. Scenic tours. All activity levels. Equipment & apparel sales. Some gear rentals available.

Hiker Shuttle Services: Complete hiker and cycle shuttle services. All major trailheads. Reservations advised to guarantee time / seats. Contact Waterton Sports and Leisure.

Tamarack General Store: A "quick stop" for sandwiches, fruits, bakery treats and fresh coffee. Great selection of beverages, snacks. ATM. Esso Gas bar.

Waterton Sports & Leisure: For over 25 years, this has been southern Alberta's "Total Outdoor Store". Large selection of apparel, footwear, outdoor accessories. Licences, maps, current trail conditions.

Tamarack Treasures: Formerly called Book-Art & Photo, long time Waterton "favourite" gift shop features Anne of Green Gables dolls and BFOFO native art apparel. Great selection of quality gifts, posters, books, souvenirs, film, and photo accessories. Above services operated by **Waterton Visitor Services Corporation**

P.O. Box 67, Tamarack Village Square, Waterton Park, AB, T0K 2M0, Ph. (403) 859-2378

Fax (403) 859-2605, email: wvsc@telusplanet.net, www.watertonvisitorservices.com

NEARBY ACCOMMODATIONS

Chief Mountain Lodge Bed and Breakfast: Country hospitality - lovely guest rms., unique mtn. setting, 15 min. east of park on new highway #5 in Mtn. View. Season June - Sept. Ph. (403) 653-1617.

Skyline Bed & Breakfast: New spacious home. Panoramic mountain view. Western hospitality. Non-smoking. 2 miles south of Pincher Creek. Ph. 627-5074. Box 2025, Pincher Creek, AB T0K 1W0.

Storey Brook Farm: B&B, spacious rooms. fireplaces, western hospitality. Horseback riding, fishing, pedal boat and trampoline.

Non-smoking. 10 min. N. of Park. Ph. (403) 627-2841. R.R. #1, Twin Butte, AB. T0K 2J0

Rocky Ridge Country Resort: Beautiful country inn. 6 charming bedrooms. Large common rooms. Sauna, hot tub, billiards. Breakfast incl. Dining room. 15 min. east of park gate Hwy 5. Open year-round. V, MC. Ph. (403) 653-2350; Fax (403) 653-1640.

Thistle Dew Ranch: Adult housekeeping cabin. Cozy, rustic & private. Fully equipped. No pets. 20 min. to Waterton. Accepts VISA. Twin Butte, AB. Ph. (403) 627-2241.

CONVENTION & CONFERENCE FACILITIES

7 The Waterton Lakes Lodge: Year round facility for meetings and conferences. Can accommodate meeting for up to 150 people. Full meal service available. Choice resort for retreats, weddings, banquets, reunions and workshops. Ph. 888-985-6343 or (403) 859-2151 for reservations or fax 859-2229. e-mail: travel@watertoninfo.ab.ca

8 Bayshore Inn: Large meeting room & break-out rooms for conferences, reunions, weddings, banquets. Ph. 859-2211.

16 Waterton Park Community Association: Community Hall (kitchen, stage), conference rooms and rec facilities. Available year round. Ph. 859-2042.

WINE & DINE

1 Garden Court Dining Room: Restaurant, lounge, tea room - Enjoy breakfast, lunch or dinner in the Garden Court Dining Room or sample a traditional Afternoon Tea in the magnificent lobby of the Prince of Wales Hotel.

1 Windsor Lounge: A truly pleasant place to enjoy the quiet hours. Live entertainment. New lounge menu. At the Prince of Wales Hotel.

7 Windflower Dining Room at The Waterton Lakes Lodge: Restaurant and lounge. A superb blend of casual dining, engaging hospitality and spectacular mountain views. Open year round. Ph. (403) 859-2151; Fax (403) 859-2229.

8 Bayshore Inn Koffee Shop: A quick stop for coffee, breakfast, lunch, snacks, pastry, dinner or pizza. Cappuccino Bar. Friendly, informal atmosphere. Picnic seating on Waterton Avenue.

8 Lakeside Kootenai Brown Dining Room and Fireside Lounge: Elegant, fine dining

with spectacular views. Or relax in our intimate lounge. Ph. 859-2211. Open all day. At the Bayshore Inn.

8 Thirsty Bear Saloon: Entertainment, pool table, video games. Video Lottery. At the Bayshore Inn.

11 New Frank's Restaurant: The best Chinese food in town and great homemade burgers. Breakfast and lunch specials and Chinese buffet. Friendly service and great food. Located on Waterton's s's main street. Ph. (403) 859-2240

12 Borderline Burgers: Burgers and pitas for all tastes from vegetarian to beef to buffalo! Salad and soup too. Patio or indoors. 305 Windflower Avenue. Ph. (403) 859-2284.

24 Pizza of Waterton: A delightful mix of tradition and innovation - that's us! Bountiful salads, homemade soups, desserts and a creative variety of pizzas. Whether you're on the deck or inside; we're licensed and open noon to ten.

ACCOMMODATIONS

IN WATERTON PARK

1 Prince of Wales Hotel: Historic structure with magnificent vista. Restaurant, lounge, gift shop. Accepts MC, VS. Ph. (403) 859-2231 or reservations: (403) 236-3400.

2 Kilmorey Lodge

3 Crandell Mountain Lodge: Warm hospitality, country inn atmosphere. Family, fireplace and kitchen units. TV. Rated 3 star. All non-smoking and some handicap units. Accepts VS, MC, AE, DS. Ph/ Fax. (403) 859-2288. Box 114, Waterton Park, AB T0K 2M0.

4 El Cortez Motel: Waterton's true value affordable accommodation. 1,2 and 3 bedroom units. Some cooking & efficiency units. Accepts MC, VS, Dis. Ph. (403) 859-2366. Box 67, Waterton Park, AB T0K 2M0.

5 Waterton Glacier Suites: 26 beautifully appointed suites, 12 two room suites with whirlpools and two fireplaces, 14 romantic suites with whirlpool and fireplace, 6 with lofts and fireplace. In-room gourmet coffees. 107 Windflower Avenue, Waterton Park, AB, T0K 2M0. Ph. 859-2004.

6 Aspen Village Inn

7 The Waterton Lakes Lodge: Waterton's newest resort. Located near the heart of Waterton with spec-

tacular mountain views. Warm and cozy environmentally decorated rooms. Some rooms with fireplaces, jetted tubs or kitchenettes. Recreation centre and health spa with indoor pool open to the public. Dining room and lounge. Conference and retreat facilities. **International Hostel.** Open year round. Ph. 1-888-985-6343 or 1-403-859-2151; Fax 1-403-859-2229.

8 Bayshore Inn: 3-star, full service luxury resort and convention centre on the lakeshore. Whirlpool tubs, dining and room service, lounge. Accepts AMX, MC, VS, DC. Ph. (403) 859-2211 or 1-888-527-9555; Fax 859-2291. Box 38, Waterton Park, AB T0K 2M0.

9 Stanley Hotel

10 Northland Lodge: Cozy lodge snuggled against the mountain side. Quiet, clean. Fireplaces, TV in guest lounge. Kitchenettes, family units, convention facilities. Reasonable. Accepts VS, MC. Ph. 859-2353. General Delivery, Waterton Park, AB T0K 2M0.

15 Central Reservations: Waterton-Glacier, Yellowstone-Banff-Jasper: Accommodations-tours & travel itineraries- Call Trail of the Great Bear 800-215-2395.

CAMPGROUNDS

Belly River Campground: (403) 859-5133 Park operated. Open mid-May to mid-September. 24 sites, semi-serviced, washrooms, sewage disposal, camp kitchens. No showers. No reservations.

Belly River Group Camp: (403) 859-2224. Park operated. Mid-May to mid September. 2 sites, semi-serviced, washrooms, camp kitchen. Reservations.

Crandell Mountain: (403) 859-5133. Park operated. Open mid-May to Labour Day. 129 sites, semi-serviced, washrooms, sewage disposal, camp kitchens. No showers. No reservations.

Pass Creek Winter Camp: (403) 859-2224. Park operated. 8 sites, semi-serviced, washrooms, camp kitchen.

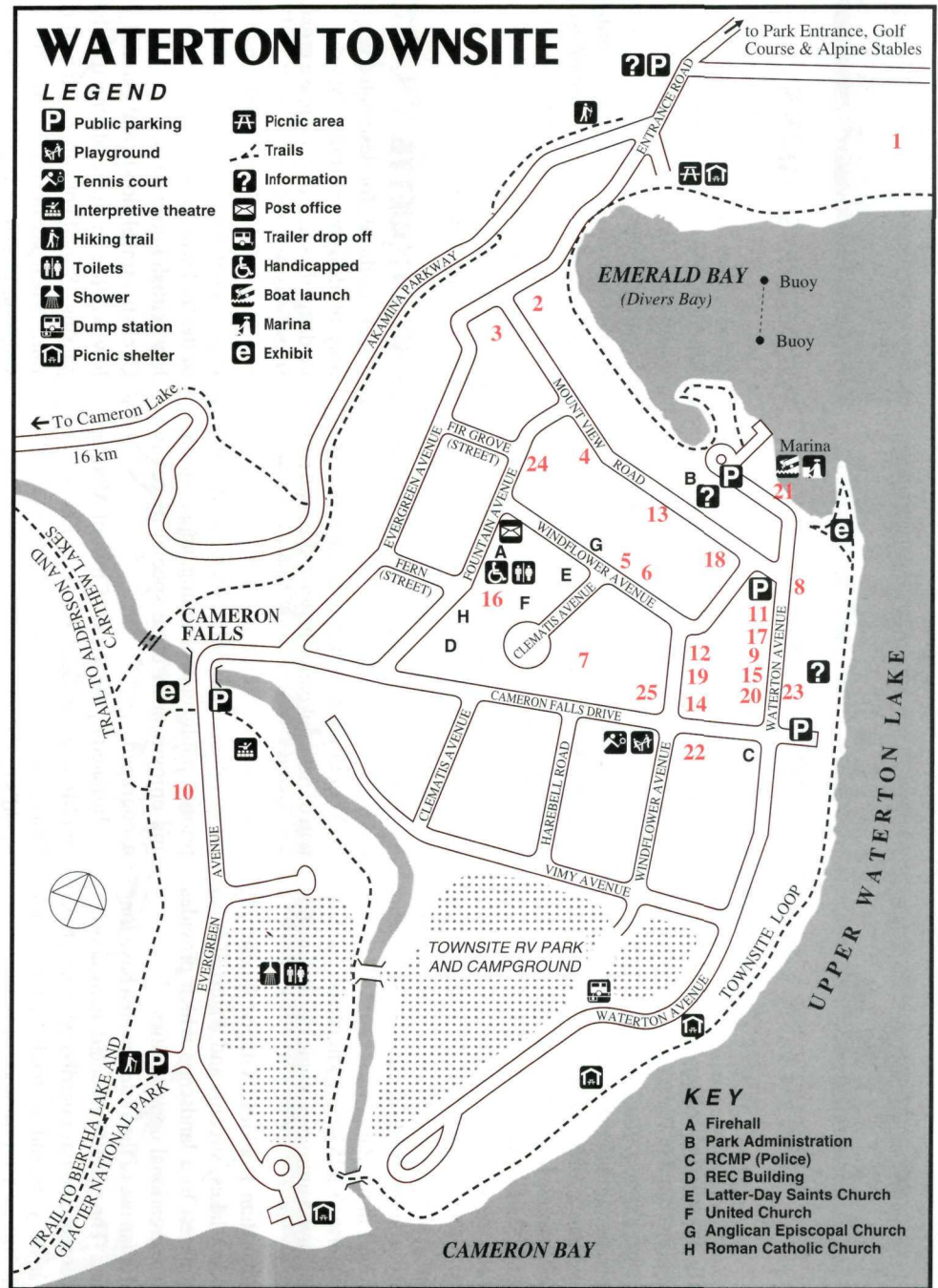
Payne Lake Campground: 18 km east of the park gate. 44 campsites. Lake shore camping. Firewood, fire pits & picnic tables. \$11 per night. \$9 per night for seniors.

Waterton Springs KOA campground: Located just north of Waterton Lakes National Park on Highway #6. Waterton's newest private campground. Fully serviced and semi-serviced RV sites, lots of tenting sites. Showers, laundromat, lounge area, convenience store. Outdoor pool, camp kitchens, playground, fishing and campfires. Reservations accepted, ph. (403) 859-2247 or fax (403) 859-2249.

Waterton Townsite: (403) 859-5133. Park operated. Open mid-May to Oct. 238 sites, fully serviced and semi-serviced. Washrooms, showers, sewage disposal, camp kitchens. No reservations.

Great Canadian Barn Dance & Family Resort: (403) 626-3407 Privately owned. Serviced RV, tent sites. Showers. Fishing, boats, sports, campfires, gift shop, barn dance.

Additional public and private campgrounds located nearby, outside the park boundaries.



Numbers in red in copy refer to numbered locations on Townsite Map.

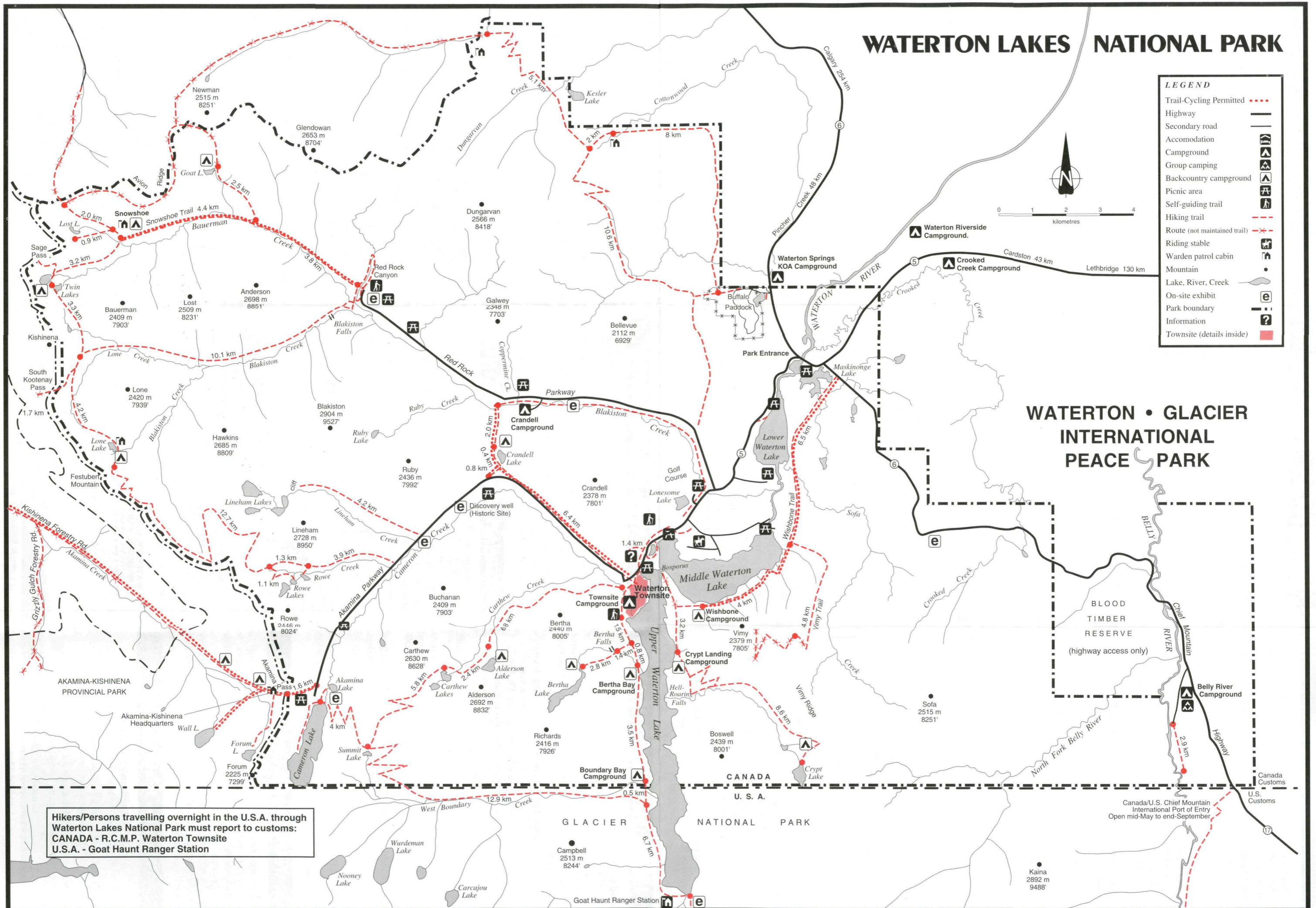
WATERTON LAKES NATIONAL PARK

LEGEND

- Trail-Cycling Permitted - - -
- Highway
- Secondary road
- Accommodation
- Campground
- Group camping
- Backcountry campground
- Picnic area
- Self-guiding trail
- Hiking trail
- Route (not maintained trail)
- Riding stable
- Warden patrol cabin
- Mountain
- Lake, River, Creek
- On-site exhibit
- Park boundary
- Information
- Townsite (details inside)



WATERTON • GLACIER INTERNATIONAL PEACE PARK



Hikers/Persons travelling overnight in the U.S.A. through Waterton Lakes National Park must report to customs:
CANADA - R.C.M.P. Waterton Townsite
U.S.A. - Goat Haunt Ranger Station

Canada/U.S. Chief Mountain International Port of Entry
 Open mid-May to end-September

GENERAL PARK INFORMATION

WATERTON LAKES NATIONAL PARK

"Where the mountains meet the prairie"

The meeting of rolling prairie and lofty mountains found in Waterton Lakes National Park provides a contrast unique in the Canadian National Parks system. This juxtaposition creates a richer variety of flowers and animals than is found in most national parks. About 55% of Alberta's total wild flower species can be found in Waterton, including many plants considered rare in Canada. Wapiti, mule deer and bighorn sheep are commonly seen and both grizzly and black bears are found in the Park.

Waterton's 525 square kilometers (203 sq. miles) have a unique geologic history, including some of the oldest exposed bedrock in the Canadian Rockies. Glacial landforms, abundant lakes, streams and waterfalls also add interest to a landscape which provides many recreational opportunities.

Human use of the Waterton area has a long history. The wildlife attracted many aboriginal peoples and has contributed to a rich native history extending back 11,000 years. Over 200 archaeological sites have been identified in the Park.

Early European explorers and settlers also left their mark on the area. Lt. Thomas Blakiston, a member of the famous Palliser Expedition and one of the area's earliest explorers, named the lakes after the 18th cen-

tury British naturalist Charles Waterton.

John George "Kootenai" Brown, the Park's first European settler, later became its first superintendent. The discovery of oil in the Park around the turn of the century led to the drilling of western Canada's first well.

To protect this diversity of history, archaeology, wildlife and landforms, the area was set aside as a park in 1895, largely due to the efforts of local rancher Frederick Godsal.

Waterton was fourth in an extensive system of national parks, historic sites and rivers, protecting areas representative of Canada's natural and cultural heritage. While preservation of this rich resource is the first priority, public understanding, appreciation and enjoyment of these special places is encouraged.

Initiated by the Rotary Clubs of Alberta and Montana in 1932, Waterton Lakes and Glacier National Parks were designated the world's first International Peace Park, commemorating the long friendship of the United States and Canada. The International Peace Park has come to represent the need for cooperation between nations, in a world where the sharing of resources and ecosystems is a reality. In 1995, UNESCO designated the Waterton-Glacier International Peace Park as a World Heritage Site.

Both Parks have also been designated Biosphere Reserves, by the UNESCO Man and the Biosphere program, to provide information about the relationships between people and their environment.

WILDERNESS USE

WILDERNESS TRAILS

There are 200 kms (120 miles) of trails in Waterton Lakes National Park. They range in difficulty from a short stroll to steep treks of several days duration. Trails are provided for a variety of users, including hikers, horse riders and bicyclists. Watch for information signs at the trailhead for the type of use permitted. Trails in Waterton also lead to extensive trail systems in Montana's Glacier National Park and in British Columbia's Akamina-Kishinena Provincial Park.

TRAIL ETIQUETTE

- ✓ Check trailheads for designated uses.
- ✓ Stay on designated trails. Shortcuts can be dangerous and may increase erosion.
- ✓ Walk, ride and cycle in single file to lessen trail widening, erosion or braiding.
- ✓ Hikers should move to the downhill side of the trail when approaching horses. Allow skittish horses to pass.
- ✓ Cyclists - travel slowly and carefully. Allow wildlife to move off the trail before passing. Signal your approach well in advance when passing hikers and indicate the side you intend to pass on. Pass slowly and with care. Dismount if approaching a horse and stand on the downhill side when possible.

HAZARDOUS ACTIVITIES

If undertaking an activity that may be hazardous (mountain or rock climbing, or hiking alone) you may voluntarily register your trip with the Warden's office. Once registered to go out, you must register back in, by returning your registration form as soon as possible. Wardens will investigate all overdue permits.

WILDERNESS CAMPING

An overnight wilderness pass is mandatory. A per person fee is charged. You must obtain the pass from the Visitor Reception Centre. Passes are issued up to 24 hours in advance. Reservations can be made up to 90 days in advance. A fee for reservations is charged. Call (403) 859-5133.

A quota system for wilderness campground use and group size is applied to control use, minimize impact on the land and maximize your wilderness experience.

Waterton's 13 designated wilderness campgrounds offer dry toilets, surface water supply. Some have shelters and horse facilities.

- ▲ Random camping is permitted only at Lineham Lakes. Hazardous activity registration is recommended here.
- ▲ Please come prepared with a containered-fuel backpacking stove. Open fires are permitted only in the fireboxes provided at some locations and when the fire hazard allows. Use only deadfall where fires are permitted and keep fires small.
- ▲ Wash away from water sources and sleeping areas to reduce the risk of pollution and unwanted confrontations with wildlife. Bring a length of rope for hanging packs from bear poles.
- ▲ Construction of temporary shelters, sleeping pads and horse corrals is not permitted in national parks. Use only the facilities provided.
- ▲ Grazing by domestic animals is not permitted in the Park. Use of pelletized feed for horses is required.
- ▲ Clean up and pack out all litter.
- ▲ Wash away from water sources and sleeping areas to reduce the risk of pollution and unwanted confrontations with wildlife. Bring a 10 metre length of rope for hanging packs from bear poles.

SAFETY

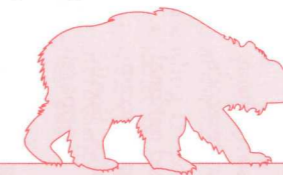
Waterton Lakes National Park is conserved as much as possible in its natural wilderness state, thus some hazards to human use do exist. Risk of injury or death can be minimized by taking reasonable precautions.

Please obey all National Park regulations. They are set for your protection and the protection of the Park's environment and wildlife.

READ AND FOLLOW THE ADVICE GIVEN BELOW.

STEEP MOUNTAINOUS TERRAIN

Most accidents involving natural hazards in Waterton occur when people fall down steep slopes and cliffs. Minimize risk around these areas by staying on designated trails, keeping well back from edges and supervising children closely. Wet or moss-covered surfaces can be slippery. Loose rock on scree slopes and near steep drops is especially dangerous.



WILDLIFE

All Park animals are wild, unpredictable and potentially dangerous. Grizzly and black bear encounters have caused fatal injuries. Please read the pamphlet "Keep the Wild In Wildlife", available from all Park offices. Deer and sheep may aggressively seek food from people and can cause injury by striking out with their sharp hooves. Other wildlife, especially when they are with their young or when human food or garbage is an attraction, have also attacked people.

DO NOT FEED OR ENTICE ANIMALS TO APPROACH.

Wildlife watching and photography are best done from a safe distance and from your car. Do not leave food or garbage where wildlife can get it, for your sake and theirs. Animals that become habituated to human food may have to be destroyed.

LAKES AND STREAMS

Waterton's lakes and streams present two dangers, drowning and hypothermia in the extremely cold waters. Take precautions when on the water or along edges of streams and lakes. Keep children closely supervised.

EMERGENCY NUMBERS

AMBULANCE	(403) 859-2636
WARDENS	(403) 859-2224
R.C.M.P.	
Waterton [May-Oct]	(403) 859-2244
Cardston	(403) 653-4931
Pincher Creek	(403) 627-4424
FIRE	(403) 859-2113
HOSPITALS	
Cardston	(403) 653-4411
Pincher Creek	(403) 627-3333

INSECTS

You can best avoid insect stings or bites by using repellents and by not wearing scented lotions or perfumes. Insects are also attracted to sweets and raw meat. In spring and early summer, check for ticks on your body and clothing. Tick bites can cause serious illness.

DRINKING WATER

Though Park waters are generally clean, there is always a chance that harmful bacteria or parasites may exist in untreated surface water. Carry water from one of the Park's treated water sources or boil and filter all untreated water.

FIRE HAZARD

For both safety and environmental reasons, the use of containered-fuel stoves is strongly recommended. Controlled campfires are allowed in designated places, but you are asked to keep them small, both to conserve fuel and to avoid unnecessary air pollution. Please check fire hazard and wind conditions.

PETS

Pets must be leashed at all times while in the Park. Dogs and other pets may jeopardize your safety and theirs by provoking and attracting wildlife. Dogs have been seriously injured in the spring by female deer protecting their fawns. Avoid walking your dogs or leaving them unsupervised at this time of year.

WEATHER

Snow and very cold temperatures can occur during any month of the year. Sunburn can be a major problem, particularly at higher elevations. Our very strong winds can seriously chill the body. Because mountain weather can change very rapidly and unpredictably, you should carry sunscreen, appropriate clothing and proper equipment at all times.

NATIONAL PARK REGULATIONS

Please leave rocks, fossils, horns, antlers, wildflowers, nests and other natural and historic objects undisturbed so that others may discover and enjoy them. Removal of such objects is subject to fines and possible imprisonment.

- ☉ **ALL** wild animals can be dangerous. It is unlawful to feed, entice or touch wildlife in a national park.
- ☉ Pets must remain on a leash at all times while in a national park.
- ☉ Camping is permitted only in designated areas, as marked by signs. Permits are required for backcountry camping.
- ☉ Clean up after all activities and dispose of litter.
- ☉ Collection of dead or down wood is unlawful except in some specific wilderness area situations.



SHORT HIKES AND STROLLS

	Trail	Trailhead (one way)	Distance (one way)	Time (approx.) (one way)	Elevation Gain
Easy Strolls	Townsite	Several in Townsite	3.2 km. (2.0 mi.) loop	1 hour	
	Prince of Wales	Emerald Bay (townsite)	2.0 km. (1.2 mi.) loop	45 minutes	
	Linnet Lake	Across Gov't Compound	1.0 km. (0.6 mi.) loop	30 minutes	
	Cameron Lakeshore	Cameron Lake	1.6 km. (1.0 mi.)	30 minutes	
	Akamina Lake	Cameron Lake	0.5 km. (0.3 mi.)	15 minutes	
	Red Rock Canyon	Red Rock Canyon	0.7 km. (0.4 mi.) loop	20 minutes	minimal
Moderately Easy Hikes	Blakiston Falls	Red Rock Canyon	1.0 km. (0.6 mi.)	30 minutes	minimal
	Lower Bertha Falls	Townsite	2.9 km. (1.8 mi.)	1 hour	150 m. (429')
	Crandell Lake	Red Rock Parkway	2.0 km. (1.2 mi.)	1 hour	100 m. (328')
		Akamina Parkway	1.2 km. (0.7 mi.)	45 minutes	100 m. (328')
	Wall Lake, B.C.	Akamina Parkway	5.6 km. (3.5 mi.)	2 hour	165 m. (512')
Moderately Difficult Hike	Wishbone (to Lower Lake)	Chief Mountain Highway	2.8 km. (1.8 mi.)	45 minutes	minimal
	Bear's Hump	Visitor Centre	1.4 km. (0.9 mi.)	40 minutes	200 m. (656')