

## SHOPPING

- 17 Akamina Clothing, Gifts and Collectibles:** Souvenir T-shirts & sweatshirts, unique gifts and jewellery. Large selection of books and Canadian souvenirs. New for '98 - "The Back Room" featuring local crafts, country candles, old fashioned dress, country pictures & antiques. 108 Waterton Avenue. Ph. 859-2361.
- 20 Caribou Clothes:** On Waterton Avenue. Hand-crafted sheepskin, leather & fur clothing and accessories. Manufactured locally. Quality gift items. Ph.859-2346.
- 6 Evergreen Gifts:** Table linens, Battenburg Lace, collectibles, hand-crafted gifts by Canadian artists. Browsers welcome. Ph.859-2345.
- 11 New Frank's Boutique:** Casual fashions, souvenir t-shirts, sweatshirts. On Waterton Ave.
- 18 Pat's:** Cigars. Premium cigars from around the world. Quality gifts, shirts, sweaters and souvenirs. Great supply of fishing tackle, bike supplies and RV items. Film, housewares and much more. Cash machine available. 224 Mt. View Rd. Ph.859-2266.
- 28 Trail of the Great Bear Gift & Travel:** Authentic native and local gifts, regional attraction tickets, hiking guides, books for outdoor enthusiasts. Travel information centre. Ph.859-2009.
- 2 Village Gift Shop:** At the Bayshore Inn. Fine china, souvenirs, film, postcards, wildlife books, t-shirts, hats, jewellery and more. Stop by and browse.
- 19 Rocky Mountain Food Mart:** Groceries, fresh meat, baked bread, deli & produce in season. Camping needs, hardware & souvenirs. Lotto. Open year round. Summer hours 8 a.m. to 10 p.m. daily. Cash machine available.
- 10 Founder's Clothes & Gifts:** At The Lodge at Waterton Lakes. Beautiful artisan works. Outdoor & hiking clothing. Many unique finds.
- 10 Waterton Outdoor Centre:** New for '98. Experience the great outdoors with the experienced staff at Waterton's newest outdoor adventure store. Equipment & apparel, rentals, backcountry guides, interpretive programs and more!! Located in the new Lodge at Waterton Lakes.
- 10 Tamarack Backcountry Adventures:** HIKING-FLYFISHING-SCRAMBLES- INTERPRETIVE WALKS. Enjoy our unique National Park with local and qualified backcountry guides. Various programs and activity levels. Equipment & supplies are available for rent or purchase. Located at the new Waterton Outdoor Centre.
- 4 Tamarack Village Square:** A Waterton tradition for over 75 years. Take an historic walk through the early years of the Baker family's various business ventures in Waterton Lakes National Park. This historic building now offers quality shopping & visitor services in a very unique atmosphere. Plenty of free parking.
- 5 Kilmorey Lodge:** Homemade Saskatoon jam, unique local gifts, books, prints, tapestries, jewellery. Open year round. Ph. 859-2334.

## WINE & DINE

- 2 Bayshore Inn Koffee Shop:** A quick stop for coffee, breakfast, lunch, snacks, pastry, dinner or pizza. Cappuccino Bar. Friendly, informal atmosphere. Patio seating on Waterton Avenue.
- 7 Garden Court Dining Room:** Restaurant, lounge, tea room - Enjoy breakfast, lunch or dinner in the Garden Court Dining Room or sample a traditional Afternoon Tea in the magnificent lobby of the Prince of Wales Hotel.
- 5 Gazebo Cafe On The Bay:** Relax and enjoy our open-air Gazebo. Fun, unique menu, local beer, fully licensed. Front lawn, Kilmorey Lodge. Ph.859-2334.
- 2 Lakeside Kootenai Brown Dining Room and Fireside Lounge:** Elegant, fine dining with spectacular views. Or relax in our intimate lounge. Ph.859-2211. Open all day. At the Bayshore Inn.
- 5 Lamp Post Dining Room:** Waterton's fine dining, open year round. Culinary delights and warm hospitality. Licensed, extensive Canadian wine menu. Open 7:30 am to 10 pm., Reservations: 859-2334. At the Kilmorey Lodge. See our menus at [www.watertoninfo.ab.ca](http://www.watertoninfo.ab.ca)
- 11 New Frank's Restaurant:** Chinese and western. Breakfast, lunch specials, burgers, soups, Chinese buffet. Friendly service, newly renovated. Low prices. On Waterton Avenue.
- 5 Ram's Head Lounge:** Open year round. On the patio, or in front of the fireplace. Great snacks, full food service, off sales. At the Kilmorey Lodge. Ph. 859-2334
- 2 Thirsty Bear Saloon:** Entertainment, pool table, video games. Video Lottery. Bayshore Inn.
- 7 Windsor Lounge:** A truly pleasant place to enjoy the quiet hours. Live entertainment. New lounge menu. At the Prince of Wales Hotel.
- 10 The Lodge at Waterton Lakes:** Waterton's Newest Hotel open July 1997. Open year round. Ph. (403) 859-2150, Fax 859-2229
- 10 Windflower Dining Room:** At The Lodge at Waterton Lakes. A superb blend of casual dining, engaging hospitality & spectacular mountain views. Lounge. Open year round.

## CANADIAN MONEY/POSTAGE

The exchange rate on U.S./Canadian dollars makes a trip to Waterton Park very affordable. Banks, money exchanges, & most businesses accept U.S. currency & travellers checks at fair exchange rates. All mail sent from Canada, regardless of destination, must carry Canadian postage, available at the Waterton Post Office and from local businesses.

### WATERTON PARK CHURCHES

- All Saints Anglican Episcopal Church**  
Windflower Avenue - Sundays at 11 a.m.
- Church of Jesus Christ of Latter Day Saints**  
Windflower Avenue - Sundays
- Our Lady of Mt. Carmel Catholic Church**  
Fountain Avenue - Sundays at 11 a.m.
- United Church**  
Clematis Avenue - Sundays at 11 a.m.

## THINGS TO SEE AND DO IN WATERTON

### SCENIC DRIVES:

The **Entrance Road** provides 8 kilometres (5 miles) of magnificent views that beautifully illustrate the Park's theme, "where the mountains meet the prairie." Colorful prairie flowers and grasses and the glittering blue chain of the Waterton Lakes are set against a mountain backdrop. The sight of the historic Prince of Wales Hotel, on a knoll above the lakes, indicates you will soon arrive at our lakeside townsite.

The **Akamina Parkway** begins near the townsite and runs for 16 km (10 mi.) along the Cameron Valley. Points of interest include the site of western Canada's first producing oil well, the Oil City site and scenic Cameron Lake.

The **Red Rock Parkway** meanders over rolling prairie and through the Blakiston Valley. It ends at the strikingly colored rocks and cascading creeks of Red Rock Canyon, a distance of 15 km (9 mi.). The drive features views of magnificent mountains, including Mt. Blakiston, the Park's highest peak.

The **Chief Mountain Highway** is the primary route between Waterton Lakes and Glacier National Parks. The highway climbs from the grasslands near Maskinonge Lake to a viewpoint giving a magnificent vista of the Front Range of the Rockies and Waterton Valley. Enroute from the border crossing, the road traverses fields and forests, dotted with wetlands created by Crooked Creek.

The **Bison Paddock**, near the north entrance to the Park off Highway 6, features a small herd of plains bison, maintained to commemorate the larger herds that once roamed freely in this area. The bison can be seen while driving a narrow road through the paddock. Please do not leave your vehicles. The road is not suitable for vehicles with trailers.

### OTHER ATTRACTIONS:

**Cameron Falls**, located in the townsite, is a picturesque waterfall, created as Cameron Creek falls from its valley into the deeper Waterton Valley.

**Goat Haunt**, located in Glacier National Park at the south end of Upper Waterton Lake, is accessible from Waterton by both trail and boat. Goat Haunt features an International Peace Park Pavilion and a U.S. ranger station. Visitors staying overnight must report to a Ranger at Goat Haunt.

The **Akamina Pass Trail** leads from the Akamina Parkway in Alberta to British Columbia's Akamina-Kishinena Provincial Park. Backcountry campgrounds and a Ranger Station are located near Wall Lake. A British Columbia fishing license is required and may be purchased only at the Waterton Visitor Reception Centre. Information is available from BC Parks (604)422-3212.

**Wildlife and Wildflowers** are abundant. Fall is probably the best time for wildlife watching. The larger animals come down from their summer ranges and waterfowl are on their migratory routes through the Park. Bears, deer, elk and bighorn sheep can be seen in the prairie portions of the Park. Sheep and deer frequent the townsite.

The Park's diversity of habitats is home to a great variety of birds. The **Maskinonge area** is particularly rich in birdlife. In spring and summer, look for birds around Linnet Lake, Cameron Lake and along the Wishbone Trail.

Wildflowers can be seen in the Park at almost any season except winter. In spring and summer, the prairies are particularly blessed with flowers. In the late summer and early fall, wildflowers are blooming at the higher elevations.

### RECREATIONAL ACTIVITIES:

Waterton offers a variety of hiking trails, for almost anyone's ability and preferences. Boating, scuba diving and board sailing are popular sports in Upper Waterton Lake. You may rent boats at Cameron Lake. Fishing is permitted in most Park waters, with an appropriate license. Ask at the Visitor Reception Centre.

Waterton has an 18-hole golf course, horse riding facilities, public tennis courts, a ball field and two children's playgrounds. In winter, cross-country skiing and snowshoeing are popular.

### INTERPRETATION SERVICES:

All visitors are invited to participate in personal interpretive programs offered in the Park; ranging from evening theatre programs to in-depth Heritage Education Programs. A cruise boat offers interpretive tours of Upper Waterton Lake, and other private interpretation services are also available. Check for details at the Visitor Reception Centre or ask for a program schedule. The Waterton/Glacier Guide, a joint International Peace Park newspaper, also provides details about the Park including information on wildlife, safety, new initiatives, special events and services. These free publications are available at the Park Gate, the Visitor Reception Centre, and the Heritage Centre.

Interpretive signs are found along all Park roads. There are special exhibits at the Chief Mountain Road lookout, the Maskinonge Overlook, Red Rock Canyon, and Cameron Lake. In the townsite, exhibits are enjoyed in the International Peace Park Pavilion and the Waterton Heritage Centre.

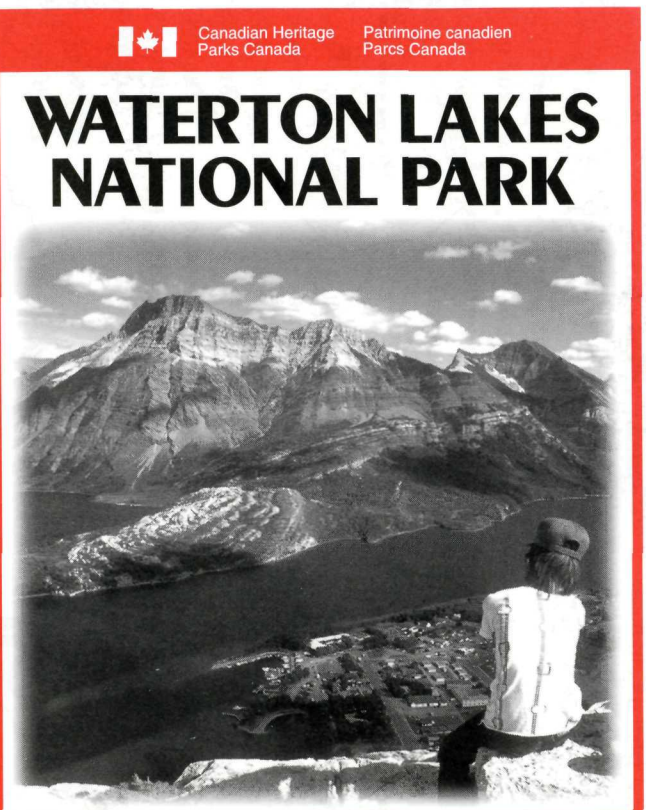
Watch for signs along Park roads inviting you to tune in to a Park radio station for information and entertaining messages. Pamphlets and publications describing various aspects of the Park are available at the Visitor Reception Centre and the Waterton Heritage Centre.

## TRAVEL INFORMATION

- 159 miles (264 km or approximately 3 hours drive) from the Olympic City, Calgary, Alberta.
- 78 miles (130 km or approx. 1 hour, 15 minutes drive) southwest of Lethbridge, Alberta.
- 40 miles (60 km or approx. 3/4 hour drive) north of Glacier Park entrance at St. Mary, Montana.
- Airports at Calgary and Lethbridge, Alberta; Kalispell and Great Falls, Montana. Car rentals at these cities and Waterton.

### INTERNATIONAL PORTS OF ENTRY

- |  |  |
|--|--|
| Chief Mountain<br>Alberta & Montana<br>Open mid-May to mid-September<br>7 a.m. to 10 p.m.<br>Closed mid-Sept. to Mid-May | Carway, Alberta<br>Peigan, Montana<br>Year Round<br>7 a.m. - 11 p.m. Daily |
|--|--|



## VISITORS GUIDE

Published by  
**Waterton Park Chamber of  
Commerce & Visitors Association**

P.O. Box 5598  
Waterton Lakes National Park  
Alberta, Canada T0K 2M0  
(403) 859-5133 (summer)  
(403) 859-2224 (winter)

[www.watertoninfo.ab.ca/cc/cvisit.html](http://www.watertoninfo.ab.ca/cc/cvisit.html)  
[www.worldweb.com/parkscanada-waterton/](http://www.worldweb.com/parkscanada-waterton/)

In co-operation with  
**Canadian Heritage - Parks Canada**

**Canada**

Printed in Canada For Free Distribution  
Également offert en français

## VISITOR SERVICES

**Alpine Stables:** View the scenery, the wildlife and the wildflowers - on horseback. For novice riders as well as experienced. Hourly or daily rates, pack trips, more. Open 9 to 5. Phone 859-2462.

**12 Bear Paw Massage Therapy:** Specializing in relaxation and therapeutic massage, aromatherapy, reflexology, reiki, craniosacral therapy. Ph. 859-2070.

**14 Canadian Wilderness Tours:** Discovery, adventure & respect for the wilderness! Guided hikes, fishing, village history walks, "bear essentials", step-on guides for scenic drives. Ph. 859-2058, toll-free reservations 888-859-8669, e-mail: travel@watertoninfo.ab.ca

**21 Crypt Lake Water Shuttle Service:** To Crypt Lake trailhead, rated a #1 hike in Canada. Spectacular waterfalls and a mountain tunnel are two of the highlights of this unique trail. Call 859-2362.

**21 Hikers' Water Shuttle Service:** To Goat Haunt, Montana for hikes to Kootenai Lakes, Goat Haunt Overlook, Rainbow Falls, Janet Lake, Francis Lake and other trails on Waterton Lake. Ph. 859-2362.

**7 Jammer Tours:** Transportation between the Prince of Wales Hotel and various locations in Glacier National Park aboard historic "Reds" touring buses. Ph. 859-2231.

**21 Marina Boat Mooring Service:** Dock your boat for a day, week, month or the entire season at the Waterton Marina. Box 126 Waterton. Ph. 859-2362.

**18 Pat's Cycle Rental:** Mountain bikes, surreys, motor scooters and strollers for rent, by the hour or day. Bicycle sales & service. Bike tires, tubes, accessories. Cash machine available. Mountview Road. Ph. 859-2266.

**18 Pat's CAA/AAA Emergency Road Service:** MOHAWK ethanol-blended fuel, propane. Minor auto repairs done on the spot. Hoses, belts, etc. Cash machine available. Ph. 859-2266.

**28 Trail of the Great Bear:** An international scenic tour linking Greater Yellowstone, Glacier-Waterton and Banff-Jasper. For FREE adventure directory write Box 142, Waterton, AB Ph. 859-2663.

**Waterton-Glacier Views:** FREE weekly newspaper serving the Waterton-Glacier International Peace Park Al-

berta-Montana Peace Park region. Visitor info, news, features, special events. Ph. (403) 627-2370; Fax 627-5850; Box 98, Pincher Creek, AB.; Box 352, Babb MT.

**23 Waterton Heritage Centre:** Exhibits, art gallery, field courses, park info, books. Phone/fax Ph. 859-2624 or 859-2267. Mail order books - Box 145, Waterton Natural History Association.

**21 Waterton Shoreline Cruises:** View wildlife, spectacular mountain scenery as you cruise from Canada to USA, aboard Coast Guard Inspected vessels. Informative, interpretive guides. Ph. 859-2362.

**2 Waterton Video Stop:** The largest selection of VHS videos, VCR machines and cameras. At the Bayshore Inn.

**10 Waterton Spa and Recreation Centre:** At the Lodge at Waterton Lakes. Fitness equipment, spa, massage therapy, indoor swimming pool. Swimming programs available. Open to the public. Children 12 and under must be accompanied by an adult. Admission fee. Ph. 859-2151.

**4 Waterton Visitor Services:** Currency (includes cash on most CDN & US credit cards) & money exchange services. Maps, attraction guides, travel information, transportation services & accommodation referrals. Photocopy and fax services. Located at the Tamarack Village Square.

**4 Park Transport Company:** Complete hiker and cycle shuttle services in Waterton. Regional transportation services to other shuttle, bus and airline connections. Scenic tours and charters. Step-on and interpretive tour services available. Reasonable rates. Reservations required. Contact Waterton Visitor Services at the Tamarack Village Square. Ph. 859-2378, fax 859-2605.

**Waterton Park Information Services: website:** www.watertoninfo.ab.ca

e-mail: travel@watertoninfo.ab.ca

**Great Canadian Barn Dance & Family Resort:** Country lodge & cottages. Double & family sleeping rooms. Indoor pool and hot tub. Conventions and retreats. 30 min. drive from Waterton. Ph. (403) 626-3407.

**Cameron Lake Boat Rentals:** Canoe, rowboat or paddleboat crystal Cameron Lake on the Continental Divide. Enjoy the beauty, magnificent scenery, wildlife watching, fishing or just relax. Guided interpretive wildlife watching. Fishing tackle and confectionery. Open daily 7:30 a.m. to 8:00 p.m.

## NEARBY ACCOMMODATIONS

**Chief Mountain Lodge Bed and Breakfast:** Country hospitality - lovely guest rms., unique mtn. setting, 15 min. east of park on new highway #5 in Mtn. View. Season June - Sept. Ph. (403) 653-1617

**Mountain View Inn:** New rooms with private bathrooms and entrances. Trout pond & separate cedar cabin available. AAA approved. East of Waterton Park Entrance on Hwy #5, Mountain View. Ph. (403) 653-1599

**Mountain View Motel:** 20 minute scenic drive from Waterton. Open year round. Family units, queen beds. Free 9-hole Pitch'n'Putt golf. Cafe. Accepts MC, VS, Dis. DC, AMX. Ph. 653-2353 or 653-1992. Fax 653-4478. Box 1, Mountain View, Alberta T0K 1N0.

**Skyline Bed & Breakfast:** New spacious home. Panoramic mountain view. Western hospitality. Non-smoking. 2 miles south of Pincher Creek. Ph. 627-5074. Box 2025, Pincher Creek, AB T0K 1W0.

**Storey Brook Farm:** B&B and country vacation. Horse riding, ranch activities, trampoline, fireplaces, sauna, fishing. Non-smoking. 10 mi. N. of Park. Ph. 627-2841. RR#1, Twin Butte, AB T0K 2J0.

**Thistle Dew Ranch:** Adult housekeeping cabin. Cozy, rustic & private. Fully equipped. No pets. 20 min. to Waterton. Accepts VISA. Twin Butte, AB. Ph. (403) 627-2241.

## ACCOMMODATIONS

### IN WATERTON PARK

**1 Aspen Village Inn:** Central, quiet, mountain views. Deluxe suites to family cottages w/kit. & fireplace. Whirlpool, playground, BBQ picnic area. AAA 3-diamond. Accepts AE, MC, VS, ER, DC. Toll-free reservations: 888-859-8669. Ph. (403) 859-2255, Fax 859-2033, Box 100, Waterton Park, AB T0K 2M0, e-mail: travel@watertoninfo.ab.ca

**2 Bayshore Inn:** 3-star, full service luxury resort and convention centre on the lakeshore. Whirlpool tubs, dining and room service, lounge. Accepts AMX, MC, VS, DC. Ph. (403) 859-2211 or 1-800-661-8080, Fax 859-2291. Box 38, Waterton Park, AB T0K 2M0.

**3 Crandell Mountain Lodge:** Warm hospitality, country inn atmosphere. Family, fireplace and kitchen units. TV. Convention facilities. Rated 2-star. Some non-smoking and handicap units. Accepts VS, MC, ER, AE, Dis. Ph. Fax. (403) 859-2288. Box 114, Waterton Park, AB T0K 2M0.

**4 El Cortez Motel:** Waterton's true value affordable accommodation. 1.2 and 3 bedroom units. Some cooking & efficiency units. Accepts MC, VS, Dis. Ph. (403) 859-2366. Box 67, Waterton Park, AB T0K 2M0.

**5 Kilmorey Lodge:** Open year round. Historic, cozy country inn on Emerald Bay. Charming antique decor, down comforters. Dining room, lounge, meeting facilities. AAA 3-diamond. Accepts AE, MC, VS, AE, ER, DC. Toll-free reservations: 888-859-8669. Ph. (403) 859-2334, Fax 859-2342, Box 100, Waterton Park, ALBERTA, T0K 2M0, e-mail: travel@watertoninfo.ab.ca

**8 Northland Lodge:** Cozy lodge snuggled against the mountain side. Quiet, clean. Fireplaces, TV in guest lounge. Kitchenettes, family units, convention facilities. Reasonable. Accepts VS, MC. Ph. 859-2353. General Delivery, Waterton Park, AB T0K 2M0.

**7 Prince of Wales Hotel:** Historic structure with magnificent vista. Restaurant, lounge, gift shop. Accepts MC, VS. Ph. - (403) 859-2231 or reservations - (403) 236-3400.

**10 The Lodge at Waterton Lakes:** Waterton's newest resort. Opened December 26, 1997. Located near the heart of Waterton with spectacular mountain views. Warm and cozy environmentally decorated rooms. Some rooms with fireplaces, jetted tubs or kitchenettes. Recreation centre and health spa with indoor pool open to the public. Dining room and lounge. Conference and retreat facilities. International Hostel. Open year round. Ph. 888-985-6343 or 859-2151. Fax 859-2229.

**28 Central Reservations:** Waterton-Glacier, Yellowstone-Banff-Jasper: Accommodations-tours & travel itineraries-Call Trail of the Great Bear 800-215-2395.

**9 Waterton Glacier Suites:** 26 beautifully appointed suites, 12 two room suites with whirlpools and two fireplaces, 14 romantic suites with whirlpool and fireplace, 6 with lofts and fireplace. In-room gourmet coffees. 107 Windflower Avenue, Waterton Park, AB, T0K 2M0. Ph. 859-2004.

## CAMPGROUNDS

**Belly River Campground: 403-859-5133** Park operated. Open mid-May to mid-September. 24 sites, semi-serviced, washrooms, sewage disposal, camp kitchens. No showers. No reservations.

**Belly River Group Camp: 403-859-2224.** Park operated. Mid-May to mid-September. 2 sites, semi-serviced, washrooms, camp kitchen. Reservations.

**Crandell Mountain: 403-859-5133.** Park operated. Open mid-May to Labour Day. 129 sites, semi-serviced, washrooms, sewage disposal, camp kitchens. No showers. No reservations.

**Great Canadian Barn Dance & Family Resort:** 403-626-3407 Privately owned. Serviced RV and tent sites. Showers. Fishing, boats, sports, campfires, gift shop, barn dance.

**Pass Creek Winter Camp: 403-859-2224.** Park operated. 8 sites, semi-serviced, washrooms, camp kitchen.

**Waterton Townsite: 403-859-5133.** Park operated. Open mid-May to Oct. 238 sites, fully serviced and semi-serviced. Washrooms, showers, sewage disposal, camp kitchens. No reservations.

*Additional public and private campgrounds located nearby, outside the park boundaries.*

## CONVENTION & CONFERENCE FACILITIES

**2 Bayshore Inn:** Large meeting room & break-out rooms for conferences, reunions, weddings, banquets. Ph. 859-2211.

**3 Crandell Mountain Lodge:** Ideal for small group meetings/conferences. Ph. 859-2288

**5 Kilmorey Lodge:** Open year round. Shoulder seasons are the perfect time for meetings or special occasions in Waterton Park. Ph. 859-2334. Fax (403) 859-2342 e-mail: travel@watertoninfo.ab.ca

**26 Waterton Park Community Association:** Community Hall (kitchen, stage), conference rooms and rec facilities. Available year round. Ph. 859-2042

**10 The Lodge at Waterton Lakes:** Year round facility for meetings and conferences. Can accommodate meeting for up to 150 people. Full meal service available. Choice resort for retreats, weddings, banquets, reunions and workshops. Ph. 888-985-6343 or (403) 859-2151 for reservations or fax 859-2229.

## LIGHT MEALS & TREATS

**20 Big Scoop Ice Cream Parlour:** Hard/soft ice cream, yogurt. 26 flavours. On Waterton Avenue. Ph. 859-2346.

**18 Pat's:** Coffee, muffins and sandwiches. Mix & match for your trail lunch or picnic snack. Cash machine available. "On the Corner" 224 Mt. View Rd. Ph. 859-2266.

**14 Summerthoughts Ice Cream Shop:** Featuring Foothills Creamery ice cream. Sundays, floats, fresh waffle cones, shakes (and expresso shakes too!) Located in the theatre. Ph. 859-2264.

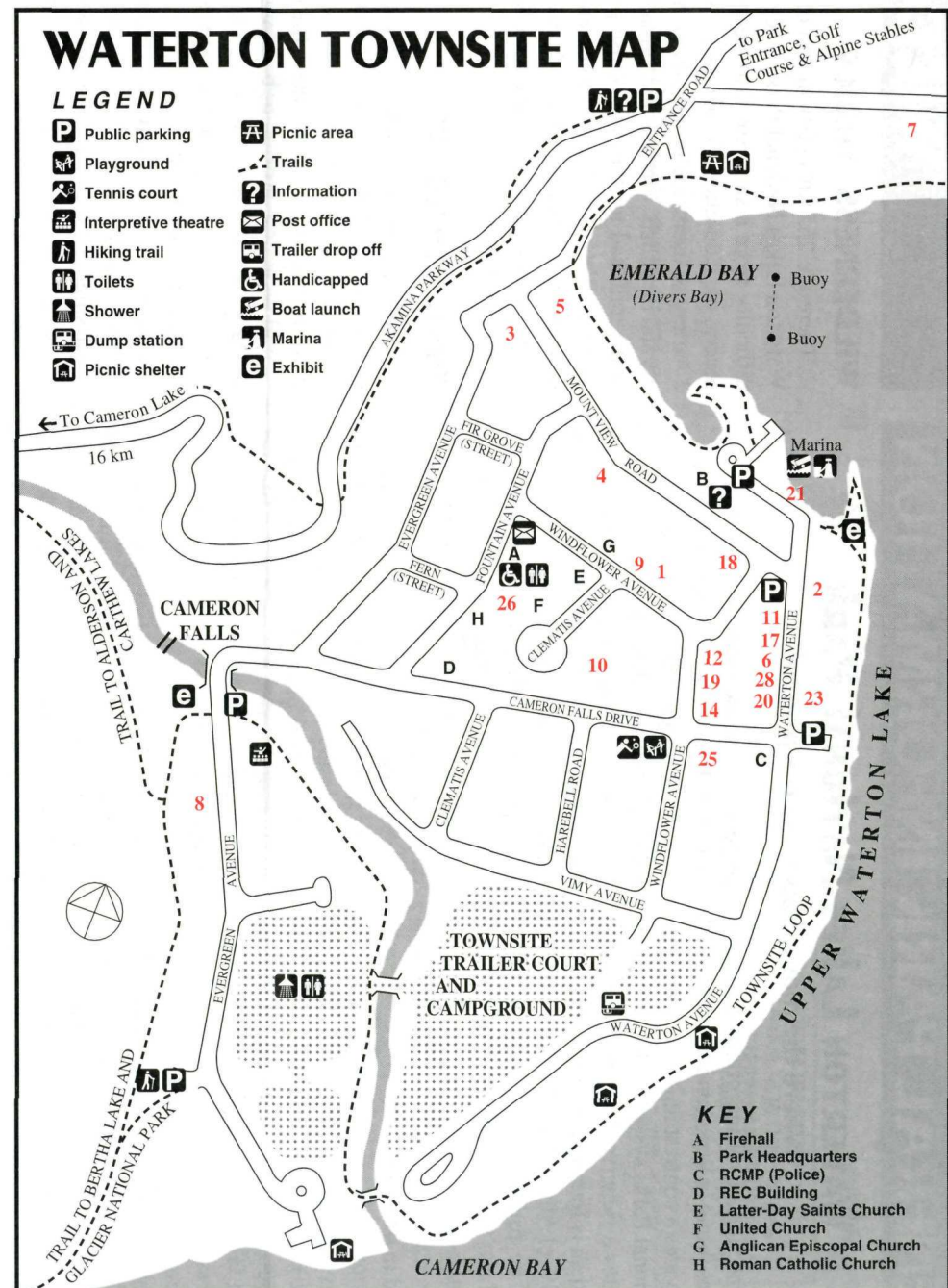
**Burgers & Bytes:** Best burgers in southern Alberta. Try our Chief Mountain Burger and spicy fries. Soft ice cream; creamy shakes. Drive thru, take out or eat in. On the Waterton Highway, in Cardston.

**14 The Waterton Bagel & Coffee Co.:** Full espresso menu, whole bean coffee, low fat muffins & biscotti, smoothies, fresh juice & other baked goodies. Located in the theatre.

**25 Welch's Chocolate Shop:** In Banff for over 30 years - now delighted to serve Waterton. Homemade fudge. Chocolate and candy from all over the world. Pastries. Ice Cream. Ph. 859-2363.

**10 Good Earth Deli:** At The Lodge at Waterton Lakes. Stock up for your trail lunch or mountain picnic. Daily freshly baked goods. Several varieties of sandwiches & other light meals.

**Cameron Lake Boat Rentals:** Confectionary, ice cream & coffee bar. Friendly service & hot coffee provided in a spectacular mountain setting at Cameron Lake. Open daily from 7:30 a.m. to 8 p.m.

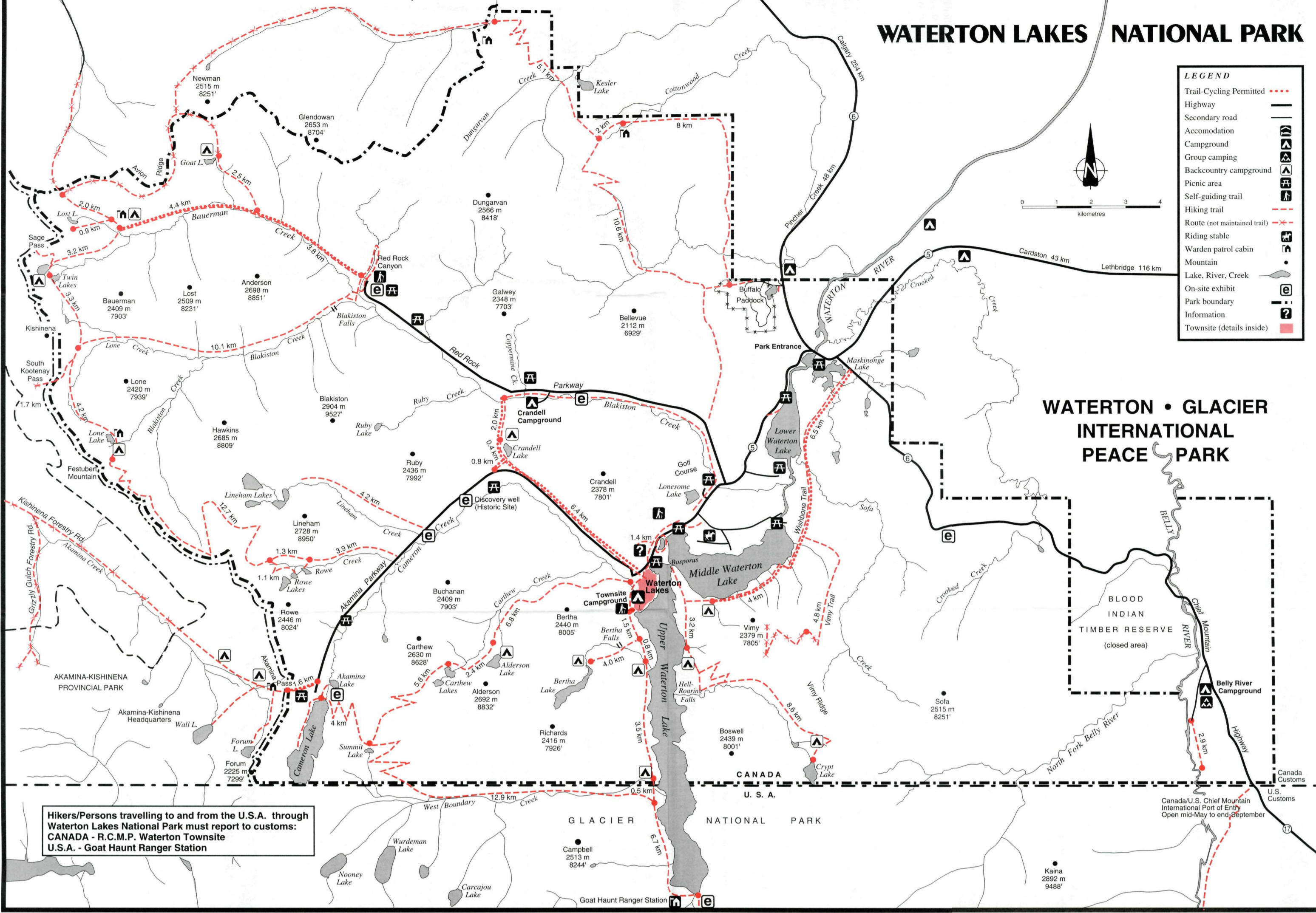


Numbers in red in copy refer to numbered locations on Townsite Map.

# WATERTON LAKES NATIONAL PARK

**LEGEND**

- Trail-Cycling Permitted ----
- Highway
- Secondary road
- Accommodation
- Campground
- Group camping
- Backcountry campground
- Picnic area
- Self-guiding trail
- Hiking trail
- Route (not maintained trail)
- Riding stable
- Warden patrol cabin
- Mountain
- Lake, River, Creek
- On-site exhibit
- Park boundary
- Information
- Townsite (details inside)



Hikers/Persons travelling to and from the U.S.A. through Waterton Lakes National Park must report to customs: CANADA - R.C.M.P. Waterton Townsite U.S.A. - Goat Haunt Ranger Station

## GENERAL PARK INFORMATION

### Waterton Lakes National Park "Where the mountains meet the prairie"

The meeting of rolling prairie and lofty mountains found in Waterton Lakes National Park provides a contrast unique in the Canadian National Parks system. This juxtaposition creates a richer variety of flowers and animals than is found in most national parks. About 55% of Alberta's total wild flower species can be found in Waterton, including many plants considered rare in Canada. Wapiti, mule deer and bighorn sheep are commonly seen and both grizzly and black bears are found in the Park.

Waterton's 525 square kilometers (203 sq. miles) have a unique geologic history, including some of the oldest exposed bedrock in the Canadian Rockies. Glacial landforms, abundant lakes, streams and waterfalls also add interest to a landscape which provides many recreational opportunities.

Human use of the Waterton area has a long history. The wildlife attracted many aboriginal peoples and has contributed to a rich native history extending back 11,000 years. Over 200 archaeological sites have been identified in the Park.

Early European explorers and settlers also left their mark on the area. Lt. Thomas Blakiston, a member of the famous Palliser Expedition and one of the area's earliest ex-

plorers, named the lakes after the 18th century British naturalist Charles Waterton.

John George "Kootenai" Brown, the Park's first European settler, later became its first superintendent. The discovery of oil in the Park around the turn of the century led to the drilling of western Canada's first well.

To protect this diversity of history, archaeology, wildlife and landforms, the area was set aside as a park in 1895, largely due to the efforts of local rancher Frederick Godsal.

Waterton was fourth in an extensive system of national parks, historic sites and rivers, protecting areas representative of Canada's natural and cultural heritage. While preservation of this rich resource is the first priority, public understanding, appreciation and enjoyment of these special places is encouraged.

Initiated by the Rotary Clubs of Alberta and Montana in 1932, Waterton Lakes and Glacier National Parks were designated the world's first International Peace Park, commemorating the long friendship of the United States and Canada. The International Peace Park has come to represent the need for co-operation between nations, in a world where the sharing of resources and ecosystems is a reality. In 1995, UNESCO designated the Waterton-Glacier International Peace Park as a World Heritage Site.

Both Parks have also been designated Biosphere Reserves, by the UNESCO Man and the Biosphere program, to provide information about the relationships between people and their environment.

## NATIONAL PARK REGULATIONS

Please leave rocks, fossils, horns, antlers, wildflowers, nests and other natural and historic objects undisturbed so that others may discover and enjoy them. Removal of such objects is subject to fines and possible imprisonment.

- ALL wild animals can be dangerous. It is unlawful to feed, entice or touch wildlife in a national park.
- Pets must remain on a leash at all times while in a national park.
- Camping is permitted only in designated areas, as marked by signs. Permits are required for backcountry camping.
- Clean up after all activities and dispose of litter.
- Collection of dead or down wood is unlawful except in some specific wilderness area situations.

## SHORT HIKES AND STROLLS

Trail	Trailhead (one way)	Distance (one way)	Time (approx.) (one way)	Elevation Gain
<b>Easy Strolls</b>	Townsite	Several in Townsite	3.2 km. (2.0 mi.) loop	1 hour
	Prince of Wales	Emerald Bay (townsite)	2.0 km. (1.2 mi.) loop	45 minutes
	Linnet Lake	Across Gov't Compound	1.0 km. (0.6 mi.) loop	30 minutes
	Cameron Lakeshore	Cameron Lake	1.6 km. (1.0 mi.)	30 minutes
	Akamina Lake	Cameron Lake	0.5 km. (0.3 mi.)	15 minutes
	Red Rock Canyon	Red Rock Canyon	0.7 km. (0.4 mi.) loop	20 minutes
<b>Moderately Easy Hikes</b>	Blakiston Falls	Red Rock Canyon	1.0 km. (0.6 mi.)	30 minutes
	Lower Bertha Falls	Townsite	2.9 km. (1.8 mi.)	1 hour
	Crandell Lake	Red Rock Parkway	2.0 km. (1.2 mi.)	1 hour
		Akamina Parkway	1.2 km. (0.7 mi.)	45 minutes
	Wall Lake, B.C.	Akamina Parkway	4.5 km. (2.7 mi.)	2 hour
	Wishbone (to Lower Lake)	Chief Mountain Highway	2.8 km. (1.8 mi.)	45 minutes
<b>Moderately Difficult Hike</b>	Bear's Hump	Visitor Centre	1.4 km. (0.9 mi.)	40 minutes

## WILDERNESS USE

### WILDERNESS TRAILS

There are 255 kms (191 miles) of trails in Waterton Lakes National Park. They range in difficulty from a short stroll to steep treks of several days duration. Trails are provided for a variety of users, including hikers, horse riders and bicyclists. Watch for information signs at the trailhead for the type of use permitted. Trails in Waterton also lead to extensive trail systems in Montana's Glacier National Park and in British Columbia's Akamina-Kishinena Provincial Park.

### TRAIL ETIQUETTE

- ✓ Check trailheads for designated uses.
- ✓ Stay on designated trails. Shortcuts can be dangerous and may increase erosion.
- ✓ Walk, ride and cycle in single file to lessen trail widening, erosion or braiding.
- ✓ Hikers should move to the downhill side of the trail when approaching horses. Allow skittish horses to pass.
- ✓ Cyclists - travel slowly and carefully. Allow wildlife to move off the trail before passing. Signal your approach well in advance when passing hikers and indicate the side you intend to pass on. Pass slowly and with care. Dismount if approaching a horse and stand on the downhill side when possible.

### HAZARDOUS ACTIVITIES

If undertaking an activity that may be hazardous (mountain or rock climbing, or hiking alone) you may voluntarily register your trip with the Warden's office. Once registered to go out, you must register back in, by returning your registration form as soon as possible. Wardens will investigate all overdue permits.

### WILDERNESS CAMPING

An overnight wilderness pass is mandatory. A per person fee is charged. You must obtain the pass from the Visitor Reception Centre. Passes are issued up to 24 hours in advance. Reservations can be made up to 90 days in advance. A fee for reservations is charged. Call (403) 859-5133.

A quota system for wilderness campground use and group size is applied to control use, minimize impact on the land and maximize your wilderness experience.

Waterton's 13 designated wilderness campgrounds offer dry toilets, surface water supply. Some have shelters and horse facilities.

- ▲ Random camping with a permit is allowed only at Lineham Lakes.
- ▲ Please come prepared with a contained-fuel backpacking stove. Open fires are permitted only in the fireboxes provided at some locations and when the fire hazard allows. Use only deadfall where fires are permitted and keep fires small.
- ▲ Wash away from water sources and sleeping areas to reduce the risk of pollution and unwanted confrontations with wildlife.
- ▲ Bring a 10 metre length of rope for hanging packs from bear poles.
- ▲ Construction of temporary shelters, sleeping pads and horse corrals is not permitted in national parks. Use only the facilities provided.
- ▲ Grazing by domestic animals is not permitted in the Park. Use of pelletized feed for horses is required.
- ▲ Apply "Leave no Trace" outdoor ethics.

## SAFETY

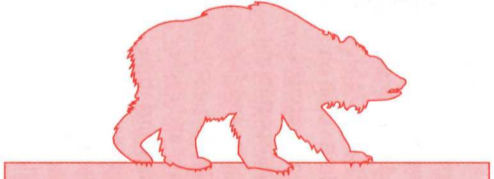
*Waterton Lakes National Park is conserved as much as possible in its natural wilderness state, thus some hazards to human use do exist. Risk of injury or death can be minimized by taking reasonable precautions.*

*Please obey all National Park regulations. They are set for your protection and the protection of the Park's environment and wildlife.*

### READ AND FOLLOW THE ADVICE GIVEN BELOW.

### STEEP MOUNTAINOUS TERRAIN

Most accidents involving natural hazards in Waterton occur when people fall down steep slopes and cliffs. Minimize risk around these areas by staying on designated trails, keeping well back from edges and supervising children closely. Wet or moss-covered surfaces can be slippery. Loose rock on scree slopes and near steep drops is especially dangerous.



### WILDLIFE

All Park animals are wild, unpredictable and potentially dangerous. Grizzly and black bear encounters have caused fatal injuries. Please read the pamphlet "You Are In Bear Country," available from all Park offices. Deer and sheep may aggressively seek food from people and can cause injury by striking out with their sharp hooves. Other wildlife, especially when they are with their young or when human food or garbage is an attraction, have also attacked people.

**DO NOT FEED OR ENTICE ANIMALS TO APPROACH.**

Wildlife watching and photography are best done from a safe distance and from your car. Do not leave food or garbage where wildlife can get it, for your sake and theirs. Animals that become habituated to human food may have to be destroyed.

### LAKES AND STREAMS

Waterton's lakes and streams present two dangers, drowning and hypothermia in the extremely cold waters. Take precautions when on the water or along edges of streams and lakes. Keep children closely supervised.

### EMERGENCY NUMBERS

911 does not apply

AMBULANCE	(403)859-2636
POLICE (RCMP)	
Waterton [May-Oct]	(403)859-2244
Cardston	(403)653-4931
Pincher Creek	(403)627-4424
FIRE ALARM	(403)859-2113
HOSPITALS	
Cardston	(403)653-4411
Pincher Creek	(403)627-3333
WARDENS	
Emergency Only	(403)859-2636

### INSECTS

You can best avoid insect stings or bites by using repellents and by not wearing scented lotions or perfumes. Insects are also attracted to sweets and raw meat. In spring and early summer, check for ticks on your body and clothing. Tick bites can cause serious illness.

### DRINKING WATER

Though Park waters are generally clean, there is always a chance that harmful bacteria or parasites may exist in untreated surface water. Carry water from one of the Park's treated water sources or boil and filter all untreated water.

### FIRE HAZARD

For both safety and environmental reasons, the use of contained-fuel stoves is strongly recommended. Controlled campfires are allowed in designated places, but you are asked to keep them small, both to conserve fuel and to avoid unnecessary air pollution. Please check fire hazard and wind conditions.

### PETS

Pets must be leashed at all times while in the Park. Dogs and other pets may jeopardize your safety and theirs by provoking and attracting wildlife. Dogs have been seriously injured in the spring by female deer protecting their fawns. Avoid walking your dogs or leaving them unsupervised at this time of year.

### WEATHER

Snow and very cold temperatures can occur during any month of the year. Sunburn can be a major problem, particularly at higher elevations. Our very strong winds can seriously chill the body. Because mountain weather can change very rapidly and unpredictably, you should carry sunscreen, appropriate clothing and proper equipment at all times.