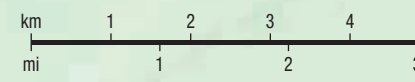




Waterton Lakes National Park

Please check the website frequently for updates: www.parksCanada.ca/waterton

Red symbols/markings indicates the trail, service or amenity is closed

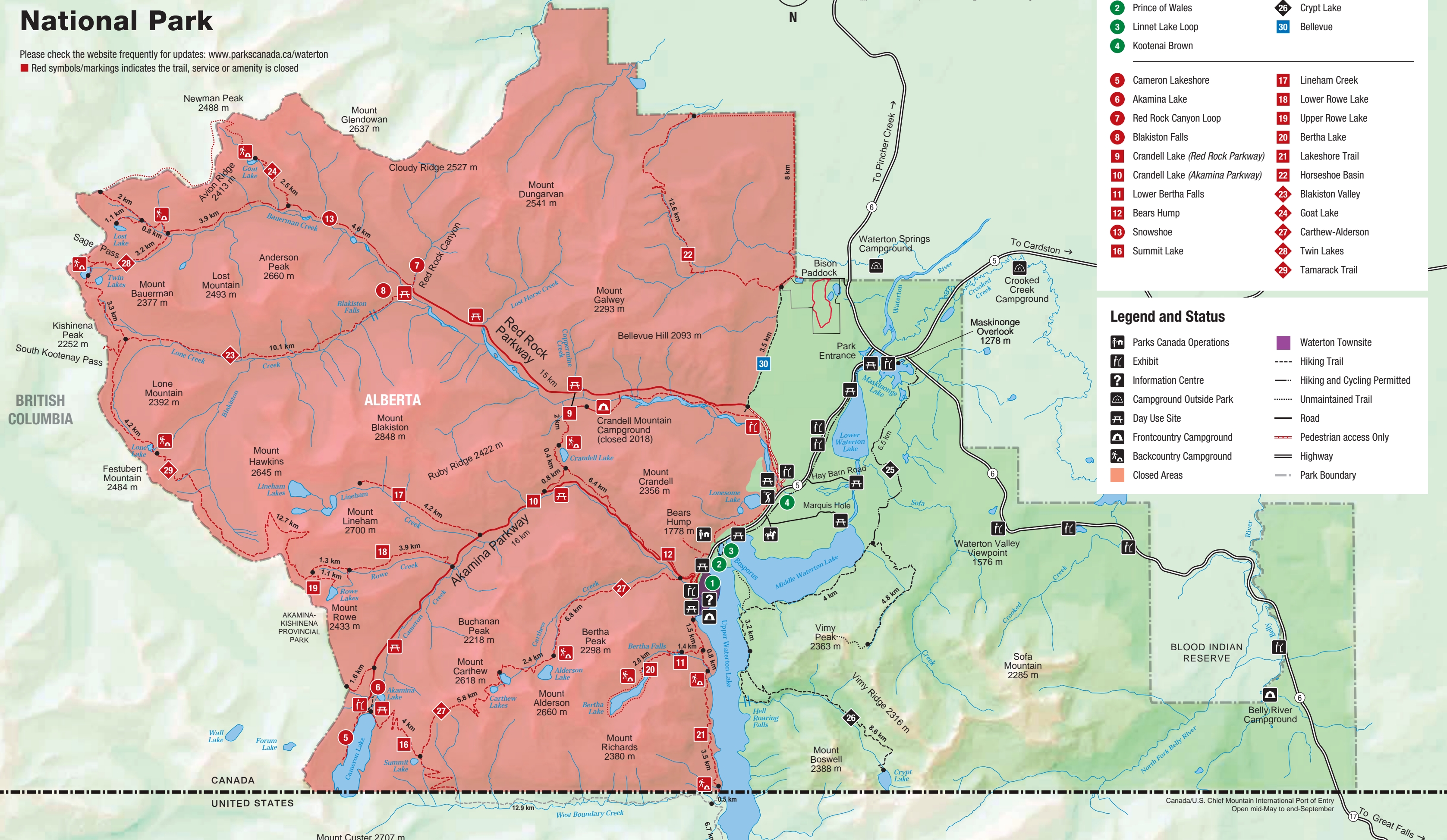


Hiking Trails and Status

- Easy ■ Moderate ◆ Difficult
- 1 Townsite
- 2 Prince of Wales
- 3 Linnet Lake Loop
- 4 Kootenai Brown
- 5 Cameron Lakeshore
- 6 Akamina Lake
- 7 Red Rock Canyon Loop
- 8 Blakiston Falls
- 9 Crandell Lake (Red Rock Parkway)
- 10 Crandell Lake (Akamina Parkway)
- 11 Lower Bertha Falls
- 12 Bears Hump
- 13 Snowshoe
- 16 Summit Lake
- 17 Lineham Creek
- 18 Lower Rowe Lake
- 19 Upper Rowe Lake
- 20 Bertha Lake
- 21 Lakeshore Trail
- 22 Horseshoe Basin
- 23 Blakiston Valley
- 24 Goat Lake
- 27 Carthew-Alderson
- 28 Twin Lakes
- 29 Tamarack Trail
- 25 Wishbone
- 26 Crypt Lake
- 30 Bellevue

Legend and Status

- Parks Canada Operations
- Exhibit
- Information Centre
- Campground Outside Park
- Day Use Site
- Frontcountry Campground
- Backcountry Campground
- Closed Areas
- Waterton Townsite
- Hiking Trail
- Hiking and Cycling Permitted
- Unmaintained Trail
- Road
- Pedestrian access Only
- Highway
- Park Boundary



BRITISH COLUMBIA

ALBERTA

CANADA
UNITED STATES

Canada/U.S. Chief Mountain International Port of Entry
Open mid-May to end-September

To Great Falls