

FISHERIES AND OCEANS



LIGHT TOWER REFURBISHMENT CAPE SPEAR

CAPE SPEAR, NL

PROJECT NO.: F6879-159002
ISSUED FOR TENDER

DATE: MARCH 11, 2015

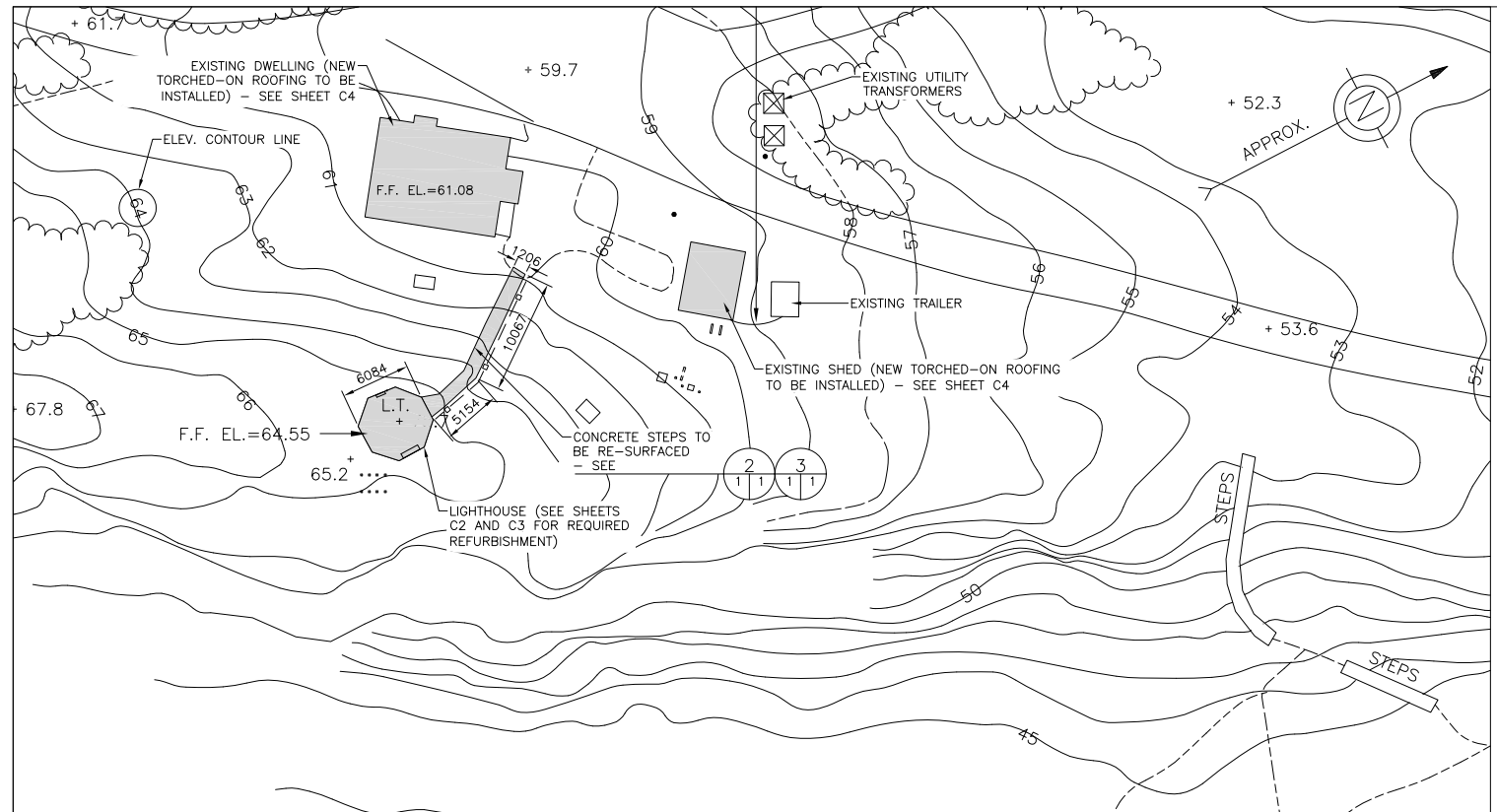
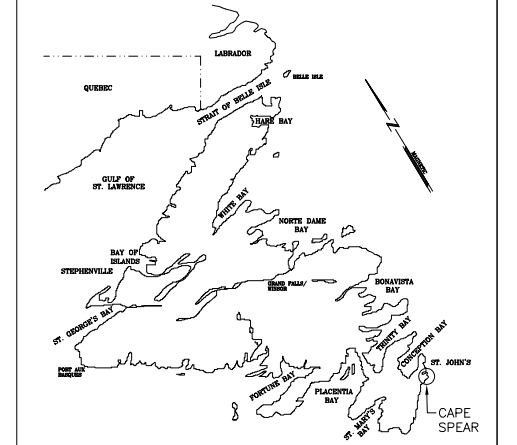
CLIENT/OWNER:
DEPARTMENT OF FISHERIES & OCEANS,
REAL PROPERTY, SAFETY & SECURITY

PRIME CONSULTANTS:
AFN ENGINEERING INC.

DRAWING LIST:

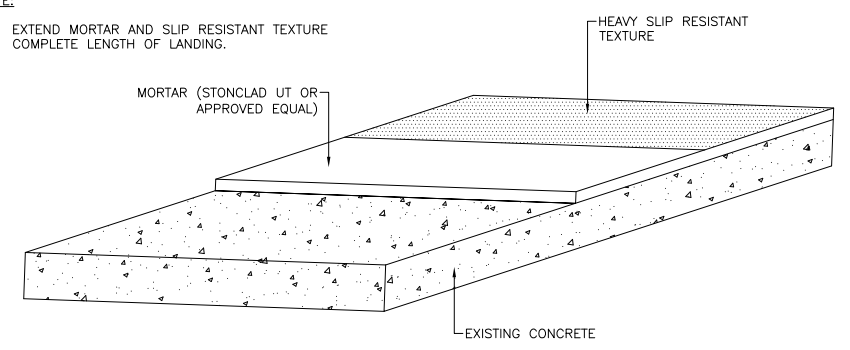
<u>TITLE</u>	
01N1008A023C1	SITE PLAN
01N1008A023C2	WORK PLAN LIGHTHOUSE EXTERIOR
01N1008A023C3	WORK PLAN LIGHTHOUSE INTERIOR
01N1008A023C4	NEW TORCHED-ON ROOFING - DWELLING AND SHED

PROVINCE OF NEWFOUNDLAND
 PERMIT HOLDER
 This Permit Allows
 APN ENGINEERING INC.
 To practice Professional Engineering in Newfoundland and Labrador.
 Permit No. as issued by APEGNL F0292 which is valid for the year 2015.

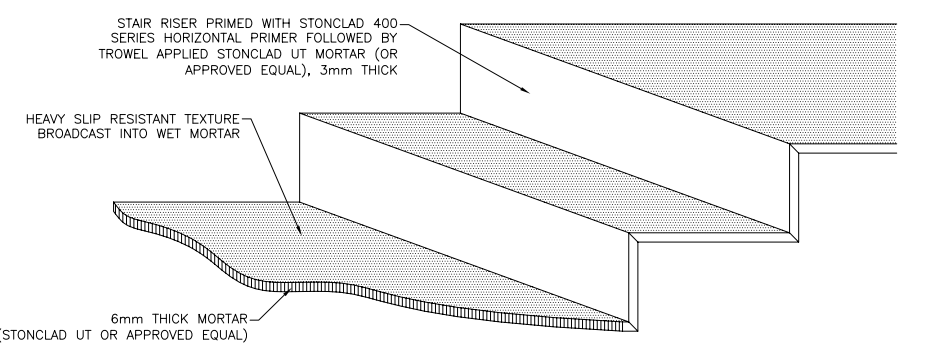


SITE PLAN
 SCALE : 1:300

NOTE:
 1. EXTEND MORTAR AND SLIP RESISTANT TEXTURE COMPLETE LENGTH OF LANDING.



SECTION - AT LANDING (TYP.)
 SCALE : N.T.S.



SECTION - PERSPECTIVE OF NEW STEPS (TYP.)
 SCALE : N.T.S.

- NOTES:
- ALL DIMENSIONS IN MILLIMETERS.
 - ALL ELEVATIONS IN METERS.
 - DIMENSIONS TO BE CONSIDERED APPROXIMATE.
 - REMOVE ALL LOOSE, DELAMINATED CONCRETE AND ANY THIN LAYERS OF MORTAR AND CONCRETE, AS DIRECTED BY ENGINEER PRIOR TO APPLICATION OF NEW PRODUCTS.
 - IN AREAS REQUIRING LOOSE CONCRETE REMOVAL WITH A THICKNESS GREATER THAN 6mm INSTALL GROUT BASE IN ACCORDANCE WITH THE MANUFACTURERS RECOMMENDATIONS.
 - INSTALL TEMPORARY FRAMING AND WEATHER ENCLOSURES AS REQUIRED TO INSTALL PRODUCTS IN ACCORDANCE WITH MANUFACTURES TEMPERATURE INSTALLATION REQUIREMENTS.
 - COORDINATE ALL WORK WITH OWNERS SITE REPRESENTATIVE.
 - NEW PRODUCT TO BE APPLIED TO FULL SURFACE AREA OF STEPS, RISERS, AND LANDINGS FOR EXTERIOR STAIRS.
 - LIGHTLY CHIP ALL AREAS WITH BUSH HAMMER TO ENSURE ALL SOFT AND SCALING CONCRETE IS REMOVED. ANY CRUMBLING CONCRETE IS TO BE CHIPPED AWAY TO SOUND, HARD CONCRETE. THE PERIMETER EDGES OF CHIPPED CONCRETE IS TO BE PREPARED TO BE PERPENDICULAR TO THE SURFACE FOR A MINIMUM DEPTH OF 20mm. THE ENTIRE SURFACE IS TO THEN BE HIGH PRESSURE WASHED TO REMOVE ANY CRACKED AGGREGATE FROM THE SCALING AND THE CHIPPING OPERATION.
 - PRIOR TO APPLICATION OF THE REPAIR PRODUCTS CONFIRM ALL TREAD AND LANDING AREAS ARE SLOPING TO PROPERLY SHED WATER. THE STONSET TG6 IS TO BE USED TO FILL ANY CHIPPED AREAS AND CORRECT ANY SLOPING ISSUES PRIOR TO APPLICATION OF THE STONECLAD UT. FOLLOW THE MANUFACTURERS DIRECTIONS FOR THE APPLICATION OF THE PRODUCTS.

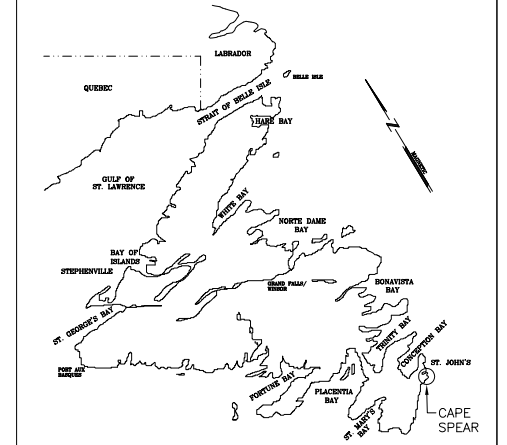
B	ISSUED FOR TENDER	28/03/15	P.H.	N.H.
A	ISSUED FOR REVIEW	11/03/15	P.H.	N.H.
no.	revision	date	by	approved
no.	revision	date	par	approve

Project - projet
 LIGHT TOWER REFURBISHMENT
 CAPE SPEAR

Drawing - dessin
 SITE PLAN

drawn - dessine	P.H.	designed - dessine par	N.H.
date - date	MARCH 11, 2015	checked - verifie	N.H.
scale - echelle	AS SHOWN	approved for tender - approuve pour l'offre	
project no. - projet no.	F6879-159002	drawing no. - no du dessin	01N1008A023C1
		sheet - feuille	C1

PROVINCE OF NEWFOUNDLAND
 PERMIT HOLDER
 This Permit Allows
 APN ENGINEERING INC.
 To practice Professional Engineering in Newfoundland and Labrador.
 Permit No. as issued by APEGNL F0292 which is valid for the year 2015.



B	ISSUED FOR TENDER	28/03/15	P.H.	N.H.
A	ISSUED FOR REVIEW	11/03/15	P.H.	N.H.
no.	revision	date	by	approved
no.	revision	date	par	approuvé

Project - projet
**LIGHT TOWER REFURBISHMENT
 CAPE SPEAR**

Drawing - dessin
**WORK PLAN
 LIGHTHOUSE EXTERIOR**

drawn - dessiné	P.H.	designed - dessinée par	N.H.
date - date	MARCH 11, 2015	checked - vérifié	N.H.
scale - échelle	AS SHOWN	approved for tender - approuvé pour l'offre	
project no. - projet no.	F6879-159002	drawing no. - no du dessin	01N1008A023C2
		sheet - feuille	C2

CONCRETE TOWER:

- PRESSURE WASH THE ENTIRE EXTERIOR CONCRETE SURFACE TO REMOVE ALL LOOSE COATINGS AND OTHER CONTAMINANTS THAT ARE ON THE SURFACE.
- APPLY 1 COAT TOUCH UP COAT OF MASTER PROTECT HB300 SB COATING (OR APPROVED EQUIVALENT) TO THE BARE CONCRETE AREAS. OBTAIN DEPARTMENTAL REPRESENTATIVE'S APPROVAL BEFORE PROCEEDING WITH SUBSEQUENT COATS.
- APPLY 2 COATS OF MASTER PROTECT HB300 SB COATING (OR APPROVED EQUIVALENT) TO THE ENTIRE CONCRETE SURFACE. APPLY AS PER MANUFACTURER'S WRITTEN INSTRUCTIONS.

EXTERIOR RAILING AROUND CATWALK:

SURFACE PREPARATION (PRIOR TO PAINTING):

- EXTERIOR GALVANIZED STEEL SECTIONS: PRESSURE WASH OR ABRASIVE BLAST TO REMOVE ALL EXISTING COATING THAT ARE ON THE STEEL SURFACE. POWER TOOL CLEAN SSPC-SP-11 TO ROUGHEN THE EXPOSED GALVANIZED SURFACE AND TO REMOVE ALL RUST THAT HAS DEVELOPED ON THE SURFACE. TO MEET THE REQUIREMENTS OF SSPC-SP-11, THE SURFACE IS TO BE POWER TOOL CLEANED TO BARE METAL. WHEN VIEWED WITHOUT MAGNIFICATION, THE SURFACE SHALL BE FREE OF ALL VISIBLE OIL, GREASE, DIRT, DUST, MILL SCALE, RUST, PAINT, OXIDES, CORROSION PRODUCTS, AND OTHER FOREIGN MATTER. SLIGHT RESIDUES OF RUST AND PAINT MAY BE LEFT IN THE LOWER PORTION OF PITS IF THE ORIGINAL SURFACE IS PITTED. THE SURFACE PROFILE SHALL NOT BE LESS THAN 1 MIL (25 MICRONS).
- DEPARTMENTAL REPRESENTATIVE WILL CONDUCT AN INSPECTION PRIOR TO RE-PAINTING TO CONFIRM THAT THE SURFACES HAVE BEEN PREPARED PROPERLY. NO RE-PAINTING IS TO BE INITIATED WITHOUT THE APPROVAL OF THE DEPARTMENTAL REPRESENTATIVE.

ACCEPTABLE PAINT PRODUCTS (OR APPROVED EQUIVALENTS), ARE AS FOLLOWS:

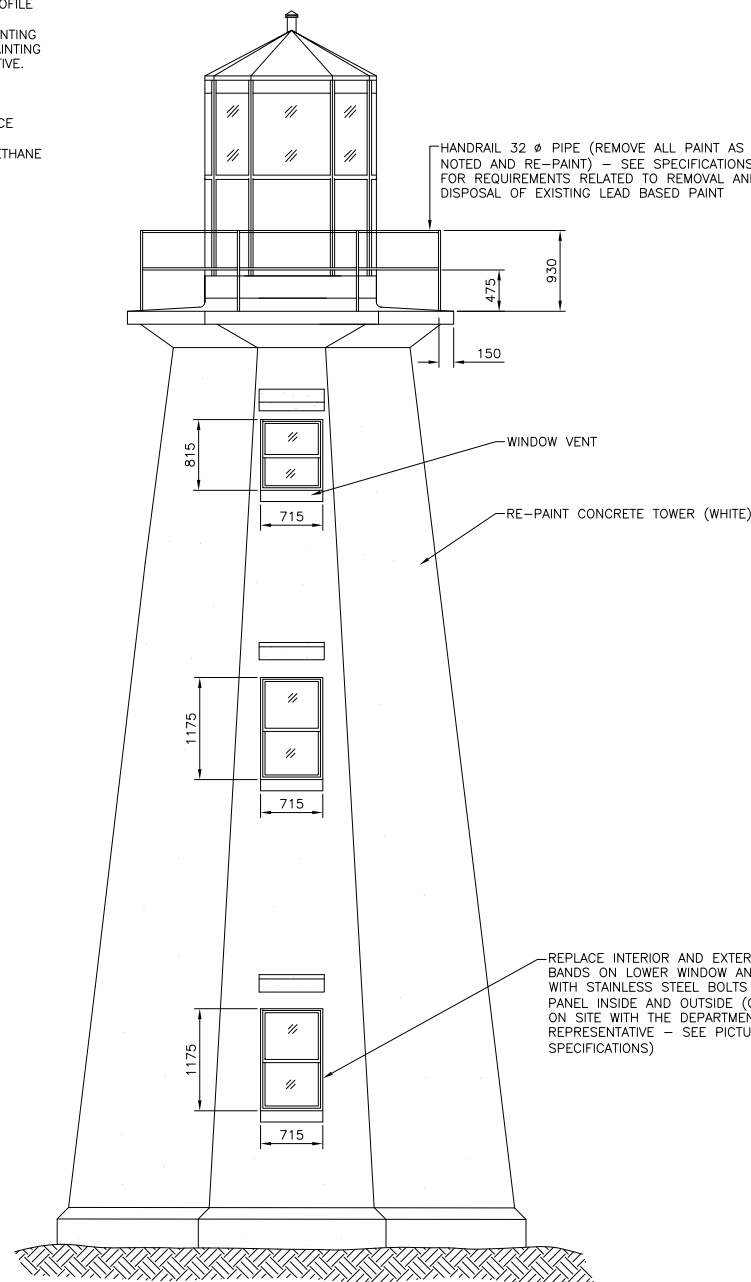
- STEEL RAILINGS: PRIME SURFACE BY APPLYING 2 COATS OF AMERLOCK 2 SURFACE TOLERANT EPOXY COATING (OR APPROVED EQUIVALENT) AT 5-7 MILS DRY FILM THICKNESS PER COAT. APPLY ONE COAT OF AMERSHIELD HIGH SOLIDS POLYURETHANE COATING (OR APPROVED EQUIVALENT) AT 3-5 MILS DRY FILM THICKNESS.
- ALL RED PAINT TO BE "COAST GUARD RED".

NEW DOOR AND HARDWARE SCHEDULE

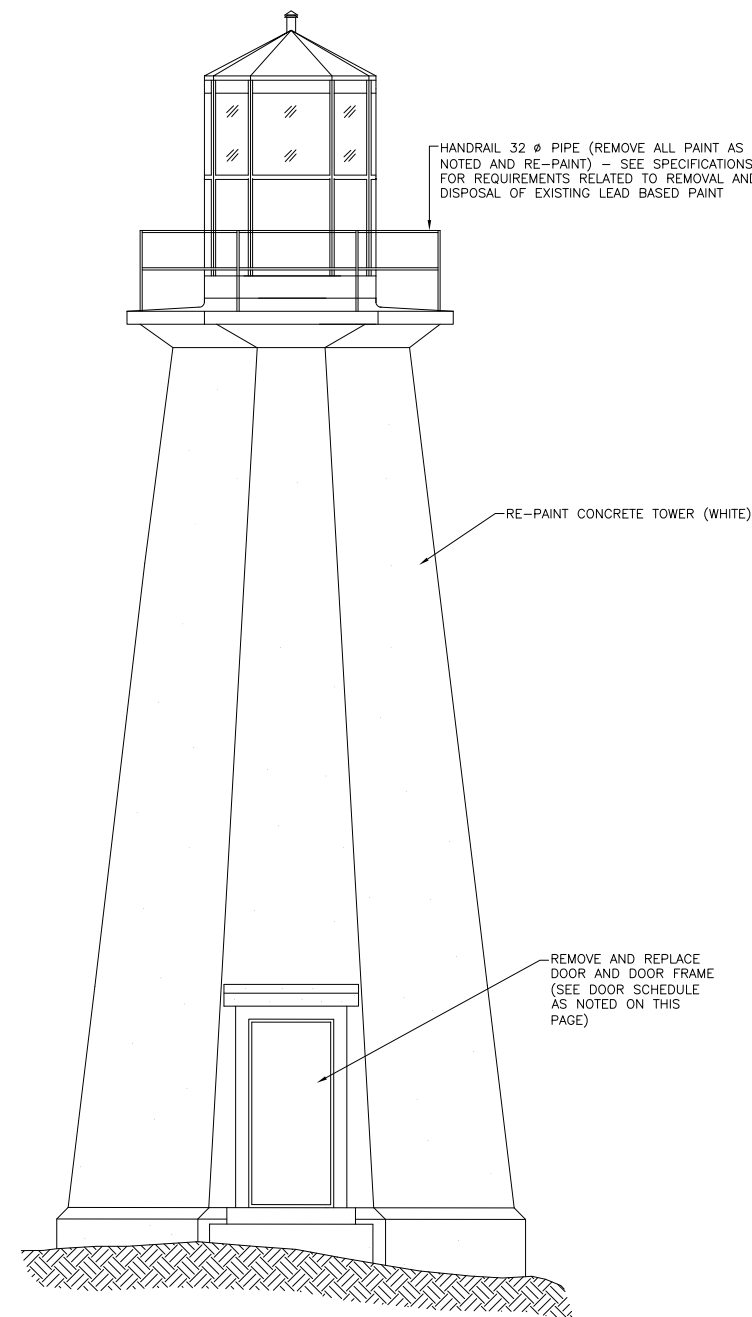
- DOOR SIZE = 915 X 2135 X 45 (CONFIRM ON JOB BEFORE FABRICATING)
 DOOR TYPE = HOLLOW METAL
 FRAME TYPE = 50mm PRESSED STEEL FRAME
- 1 CONTINUOUS HINGE CH-951 X SIZE REQUIRED (630)
 - 1 EXIT DEVICE 9300B-01-476-TV/SNB (630)
 - 1 DOOR CLOSER 8901DS-TB/SNB (689)
 - 1 SET WEATHER STRIPPING 1500N X SIZE REQUIRED (AN)
 - 1 WATER DRIP-HEAD-AW2 X SIZE REQUIRED (AN)
 - 1 WATER DRIP-BOTTOM-AW1 X SIZE REQUIRED (MF)
 - 1 THRESHOLD ATP5 X SIZE REQUIRED (ALUM.)
 - 1 DOOR LOCK CORBIN WITH EXTERIOR KEY AND THUMBTURN INSIDE

LEAD PAINT IS PRESENT ON THE CATWALK RAILING AND EXTERIOR CONCRETE PAINT ON THE TOWER. THE LIGHTHOUSE SITE IS CONSIDERED SENSITIVE DUE TO THE REMOTE LOCATION, HISTORIC NATURE OF THE LIGHTHOUSE AND FREQUENCY OF TOURISTS VISITS. IN THIS REGARD, ALL LEAD PAINT REMOVAL ACTIVITIES ARE TO BE IN ACCORDANCE WITH SPECIFICATION SECTION 02 83 12, WITH SPECIFIC REFERENCE TO THE "GUIDELINE FOR LEAD ON CONSTRUCTION PROJECTS FROM OCCUPATIONAL HEALTH AND SAFETY BRANCH, ONTARIO MINISTRY OF LABOUR, APRIL, 2011". A COPY OF THIS DOCUMENT CAN BE PROVIDED BY THE DEPARTMENTAL REPRESENTATIVE UPON REQUEST. MINIMUM REQUIREMENTS INCLUDE:

- PERIMETER SCAFFOLDING. SCAFFOLDING MUST BE DESIGNED AND STAMPED BY A PROFESSIONAL ENGINEER, LICENSED BY PEG-NL TO PRACTICE ENGINEERING IN THE PROVINCE OF NL.
- FULL ENCLOSURE DURING PAINT REMOVAL ACTIVITIES, CONSISTING OF VERTICALLY HUNG TARPS OF IMPERMEABLE SHEETING ON ALL SIDES, OVERHEAD COVERS AND GROUND SHEETS OR RIGID PLATFORMS. ALL TARPS TO HAVE FULLY SEALED JOINTS AND SEALED ENTRANCEWAYS. DEBRIS TO BE DIRECTED TO GROUND SHEETS FOR COLLECTION AND REMOVAL. UNCONTROLLED DUST AND DEBRIS TO BE PREVENTED FROM LEAVING THE ENCLOSURE (USE NEGATIVE AIR UNITS AS REQUIRED TO MEET GOVERNING REGULATIONS). FOR THE PURPOSES OF TRANSPORTATION AND DISPOSAL, THE EXTERIOR LEAD PAINT ON THE CATWALK RAILING IS CONSIDERED LEACHABLE AND IS TO BE CONSIDERED HAZARDOUS WASTE.
- DECONTAMINATION UNIT TO BE ESTABLISHED AT ENTRANCEWAY. DECONTAMINATION UNIT TO CONSIST OF CLEAN ROOM, WASHROOM/CHANGE ROOM AND DIRTY ROOM.

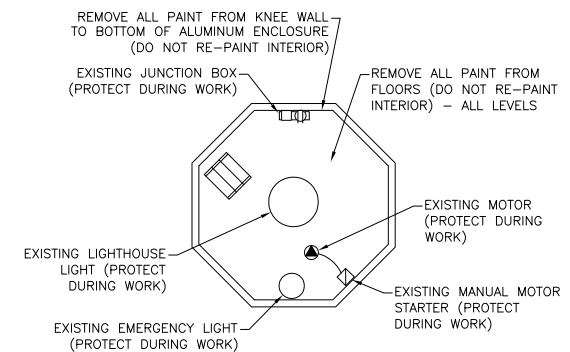
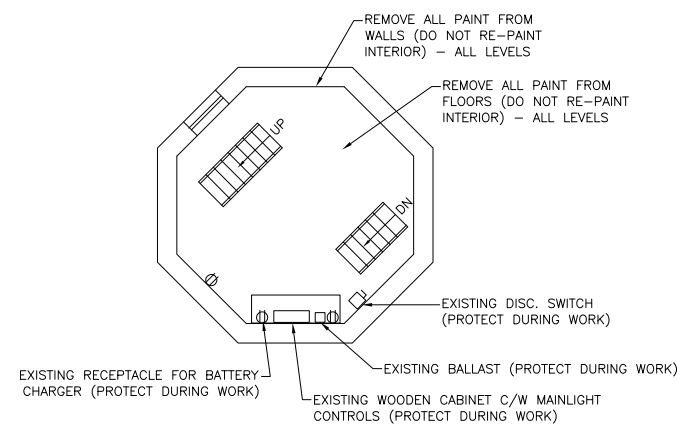
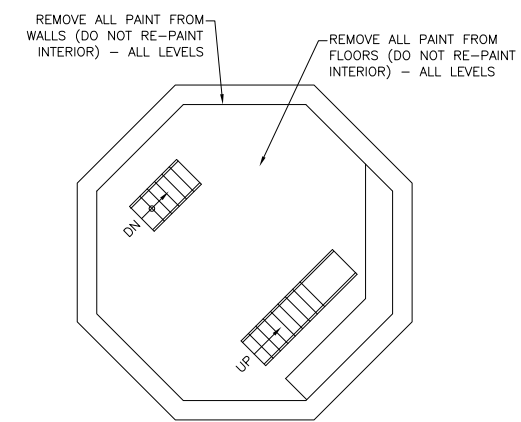
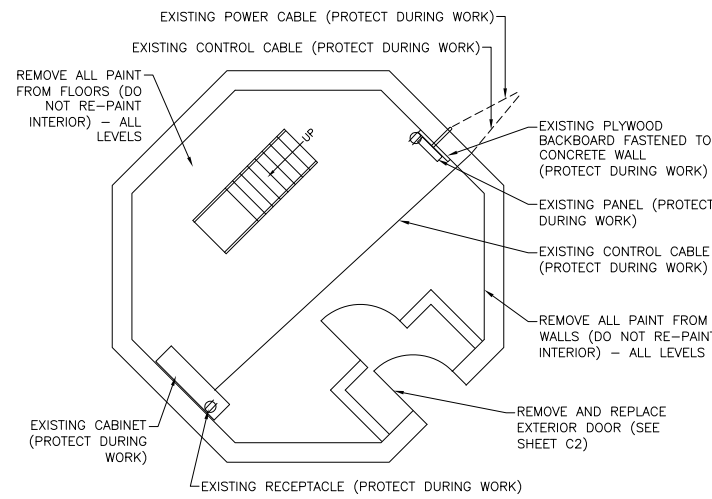
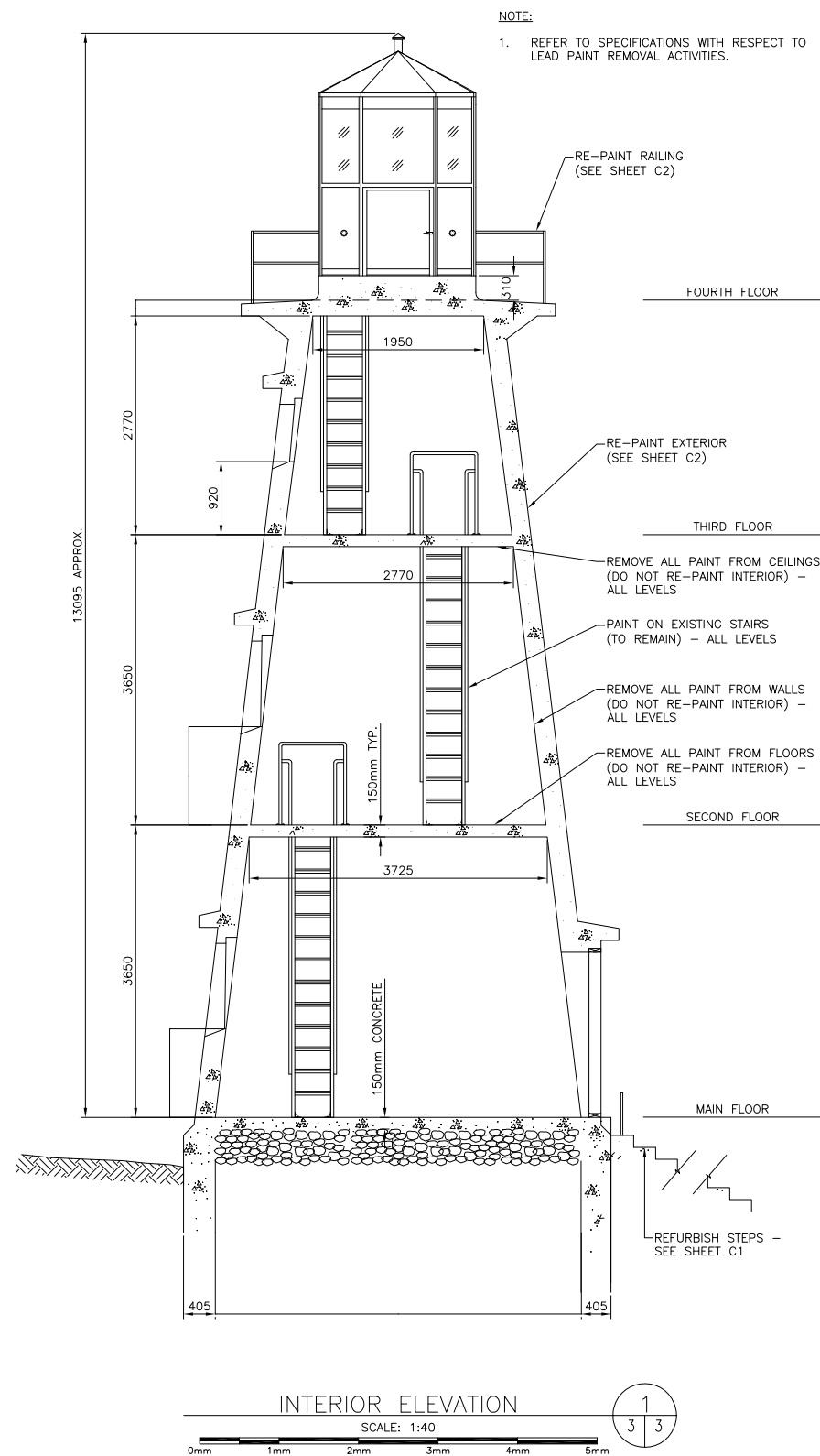
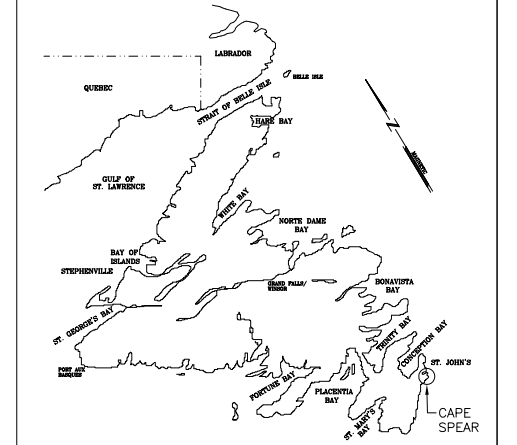


REAR ELEVATION
 SCALE: 1:40
 0mm 1mm 2mm 3mm 4mm 5mm



FRONT ELEVATION
 SCALE: 1:40
 0mm 1mm 2mm 3mm 4mm 5mm

PROVINCE OF NEWFOUNDLAND
 PERMIT HOLDER
 This Permit Allows
 APN ENGINEERING INC.
 To practice Professional Engineering
 in Newfoundland and Labrador.
 Permit No. as issued by APEGNL F0292
 which is valid for the year 2015.



LEAD PAINT IS PRESENT ON THE INTERIOR CONCRETE SURFACES. ALL LEAD PAINT REMOVAL ACTIVITIES ARE TO BE IN ACCORDANCE WITH SPECIFICATION SECTION 02 83 12, WITH SPECIFIC REFERENCE TO THE "GUIDELINE FOR LEAD ON CONSTRUCTION PROJECTS FROM OCCUPATIONAL HEALTH AND SAFETY BRANCH, ONTARIO MINISTRY OF LABOUR, APRIL, 2011". A COPY OF THIS DOCUMENT CAN BE PROVIDED BY THE DEPARTMENTAL REPRESENTATIVE UPON REQUEST. MINIMUM REQUIREMENTS INCLUDE:

- USE DECONTAMINATION UNITS AND NEGATIVE AIR UNITS WHEN REMOVING LEAD PAINT FROM INTERIOR CONCRETE SURFACES, TO LIMIT OCCUPATIONAL EXPOSURE TO LEAD DUST. FOR THE PURPOSES OF TRANSPORTATION AND DISPOSAL, THE INTERIOR LEAD PAINT ON THE CONCRETE SURFACES IS CONSIDERED NON-LEACHABLE AND CAN BE DISPOSED OF IN THE REGULAR WASTE STREAM.
- PROTECT OBJECTS DESIGNATED TO REMAIN, FROM CONTAMINATION DURING LEAD PAINT REMOVAL ACTIVITIES ON INTERIOR OF LIGHT TOWER.

B	ISSUED FOR TENDER	28/03/15	P.H.	N.H.
A	ISSUED FOR REVIEW	11/03/15	P.H.	N.H.
no.	revision	date	by	approved
no.	revision	date	par	approve

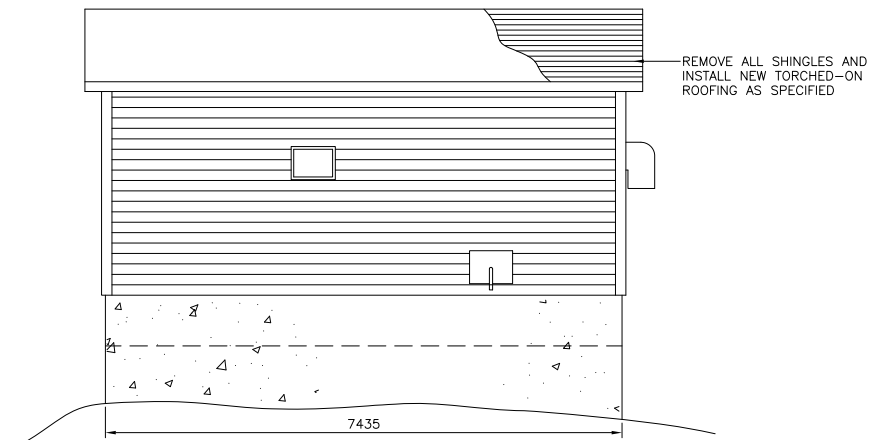
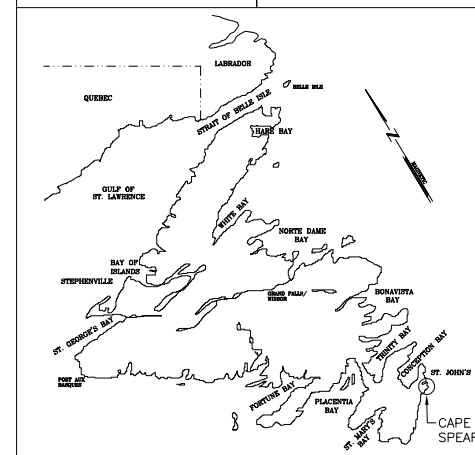
Project - projet
 LIGHT TOWER REFURBISHMENT
 CAPE SPEAR

Drawing - dessin
 WORK PLAN
 LIGHTHOUSE INTERIOR

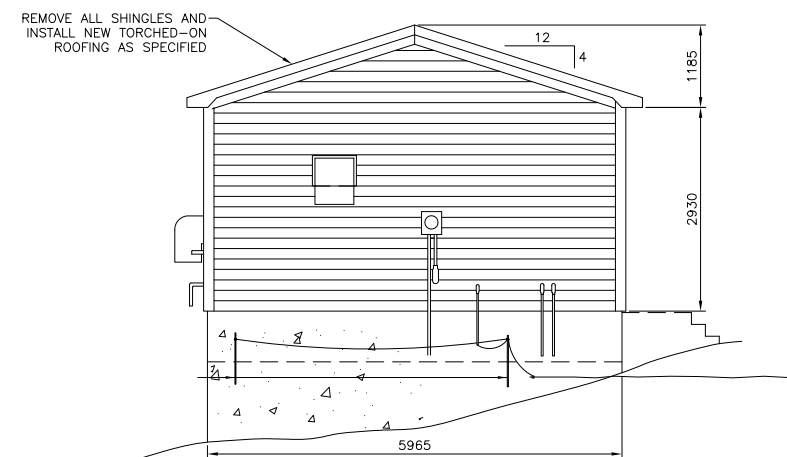
drawn - dessine	P.H.	designed - dessinée par	N.H.
date - date	MARCH 11, 2015	checked - vérifié	N.H.
scale - échelle	AS SHOWN	approved for tender - approuvé pour l'offre	
project no. - projet no.	F6879-159002	drawing no. - no du dessin	01N1008A023C3
		sheet - feuille	C3

PROVINCE OF NEWFOUNDLAND
 PERMIT HOLDER
 This Permit Allows
 APN ENGINEERING INC.
 To practice Professional Engineering
 in Newfoundland and Labrador.
 Permit No. as issued by APEGNL F0292
 which is valid for the year 2015.

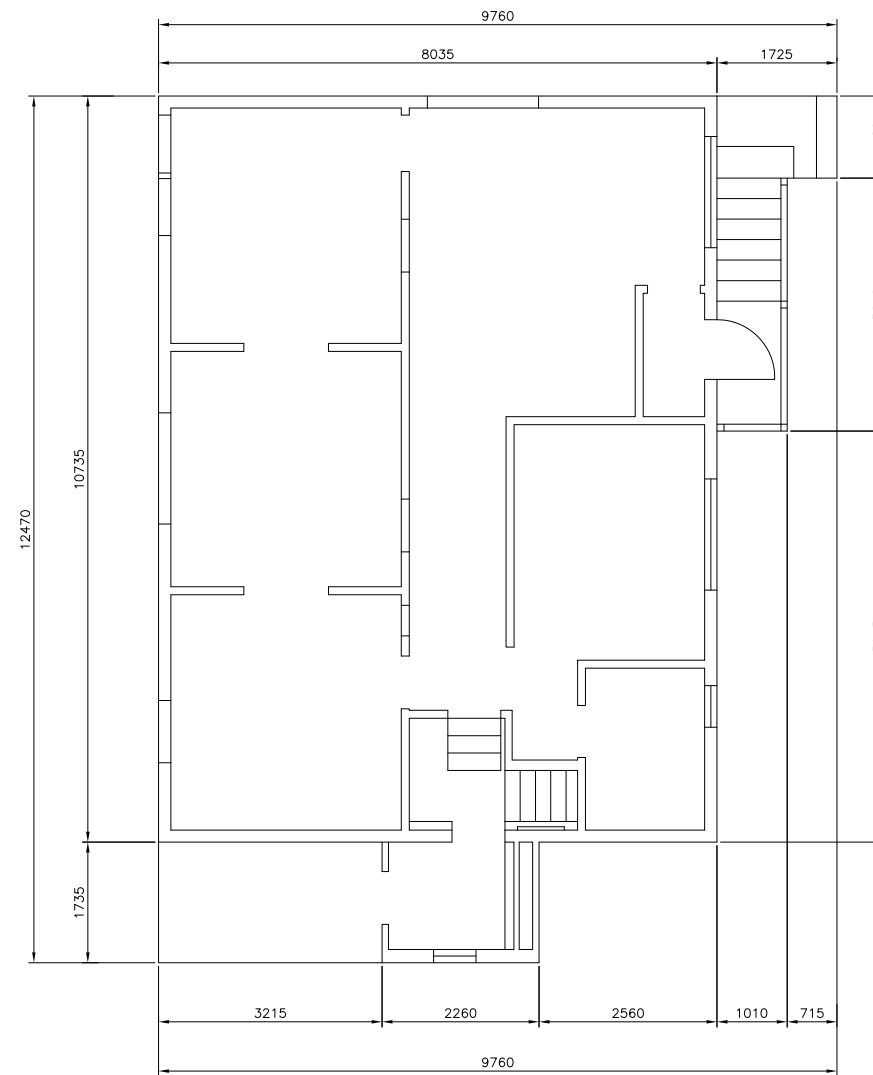
REGISTERED PROFESSIONAL ENGINEER
 NEIL C. HUNT
 SIGNATURE
 28/03/15
 DATE
 NEWFOUNDLAND & LABRADOR



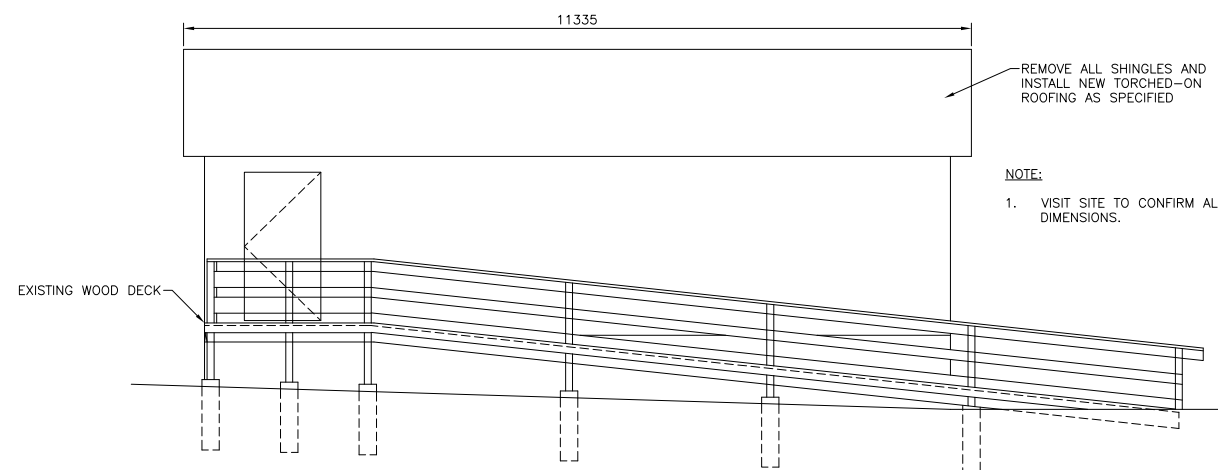
TYPICAL FRONT/BACK ELEVATION - SHED
 SCALE: 1:50



TYPICAL SIDE ELEVATION - SHED
 SCALE: 1:50



EXTERIOR DIMENSIONS OF DWELLING
 SCALE: 1:50

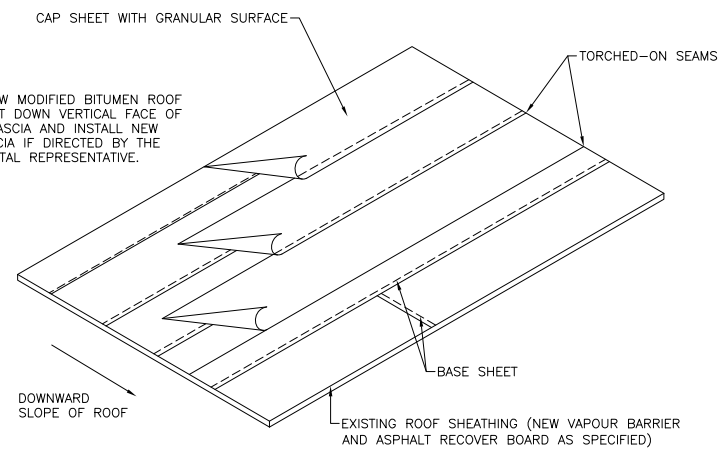


TYPICAL ELEVATION - DWELLING
 SCALE: 1:50

NOTE:
 1. VISIT SITE TO CONFIRM ALL DIMENSIONS.

NOTE:

1. EXTEND NEW MODIFIED BITUMEN ROOF BASE SHEET DOWN VERTICAL FACE OF EXISTING FASCIA AND INSTALL NEW METAL FASCIA IF DIRECTED BY THE DEPARTMENTAL REPRESENTATIVE.



ISOMETRIC OF NEW 2 PLY MODIFIED BITUMEN ROOF
 SCALE: N.T.S.

B	ISSUED FOR TENDER	28/03/15	P.H.	N.H.
A	ISSUED FOR REVIEW	11/03/15	P.H.	N.H.
no.	revision	date	by	approved
no.	revision	date	par	approve

Project - projet
 LIGHT TOWER REFURBISHMENT
 CAPE SPEAR

Drawing - dessin
 NEW TORCHED-ON ROOFING
 - DWELLING AND SHED

drawn - dessine	P.H.	designed - dessine par	N.H.
date - date	MARCH 11, 2015	checked - verifie	N.H.
scale - echelle	AS SHOWN	approved for tender - approuve pour l'offre	
project no. - projet no.	F6879-159002	drawing no. - no du dessin	01N1008A023C4
		sheet - feuille	C4