



SAGUENAY-ST. LAWRENCE
MARINE PARK

marinepark.qc.ca

VISITOR'S GUIDE 2019

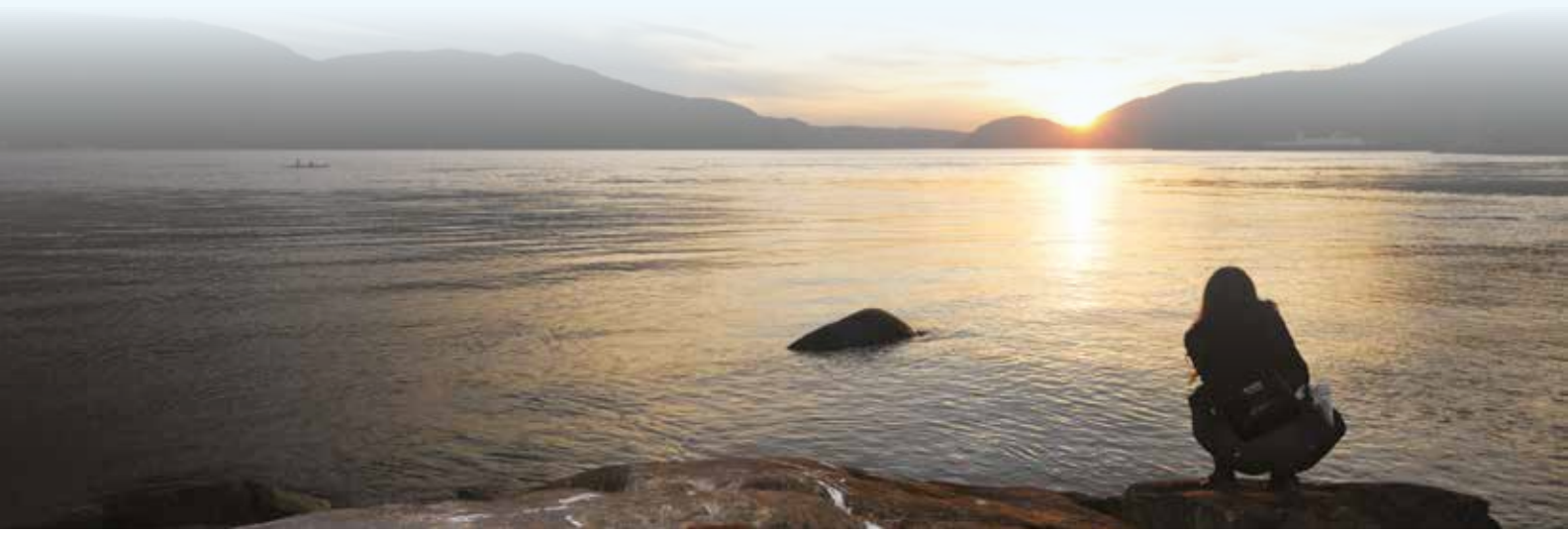


PHOTO 1

The park protects an exceptional marine area. More than 1,800 wild species have been sighted within its boundaries, ranging from microscopic algae to the gigantic blue whale. The St. Lawrence beluga whale is its most famous resident.

PAY A VISIT TO WHALE COUNTRY

The Marine Park is one of the best places in the world to observe whales. Watch them break the surface and listen for their powerful blows from established coastal sites or from aboard tour-operator vessels.

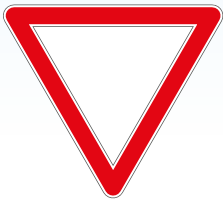
A TREAT ON LAND AND AT SEA



You will be unequivocally charmed by the Park's scenic beauty. Climb into a kayak or set sail. Take a cruise up the Fjord or to the islands of the St. Lawrence. Admire the colours of the seafloor while diving or on a high-definition screen. Visit Discovery Network shore-based sites: take advantage of spectacular viewpoints, roam hiking trails or exhibits and get caught up in fascinating tales.

LET'S PROTECT WHALES – LET'S KEEP OUR DISTANCE!

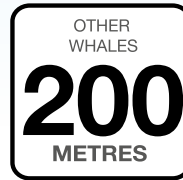
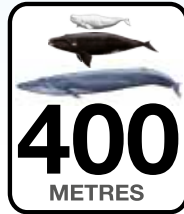
WHEREVER YOU GO IN THE MARINE PARK, RESPECT THESE RULES:



Yield the right-of-way



(29 mph)



To learn more, visit marinepark.qc.ca/protect/

Your presence in the belugas' habitat can attract their attention and reduce the amount of time they spend looking after their young, feeding, and resting. Belugas need space and a peaceful environment.

**WHEN IN THE PRESENCE OF BELUGAS,
DO NOT STOP.**

**MOVE AWAY WHILE MAINTAINING
A DISTANCE OF AT LEAST 400 METRES.**

Every action counts to help protect the belugas.



Show you care, keep your distance



PHOTO 3

WHALE WATCHING FROM SHORE

Keep your eyes peeled and your ears open while out walking, biking or driving along the Marine Park's shorelines! You might well glimpse or hear beluga, minke or fin whales, or possibly harbour porpoises, as they swim along the coast. There are surprises in store for you from Baie-Sainte-Catherine to Les Escoumins, with Sacré-Cœur in between. See the Discovery Network section (pages 12 to 15).



PHOTO 4

WHALE WATCHING BY BOAT

What fun it is to hear a whale blow or to catch a glimpse of one of these incredible animals at the surface! Take in the fascinating spectacle of marine animals from aboard a boat. Get ready for a journey to the kingdom of whales, seals and seabirds. Select the type of excursion that suits you best. See pages 8 and 9.



PHOTO 5

EXPERIENCE THE SEA

Get in sync with nature by choosing an outing of several hours or several days, with a guide or on your own. You will contemplate the scenery from a different perspective aboard a kayak, a sailboat, a shuttle or while scuba diving. See pages 8 to 11.



PHOTO 6

VISIT THE VARIOUS INTERPRETATION CENTRES AND MUSEUMS

To satisfy your thirst for knowledge, partake in any one of several activities on offer. Enthusiastic guide-interpreters and fascinating exhibits will give you valuable insights into the many facets of the Marine Park. These helpful resources tell the full story of marine life, from starfish to sharks, as well as the history of local lighthouses and Indigenous populations. Pages 12 to 15.



PHOTO 7

SPECTACULAR VISTAS AND HIKING TRAILS

Discover the numerous vantage points that border the Saguenay Fjord and St. Lawrence Estuary on foot, by car or by bicycle. Once you begin to admire the sights along the shore, listen to the crash of waves on the beach and breathe in the salt air, it won't be long before you've left the daily grind behind. The Discovery Network guarantees a real change of scenery all along the perimeter of the Marine Park. See pages 12 to 15.

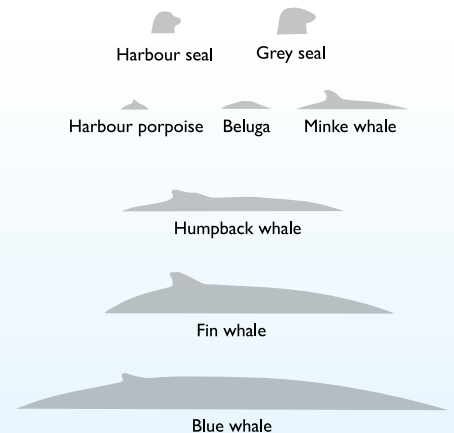


DID YOU KNOW...?

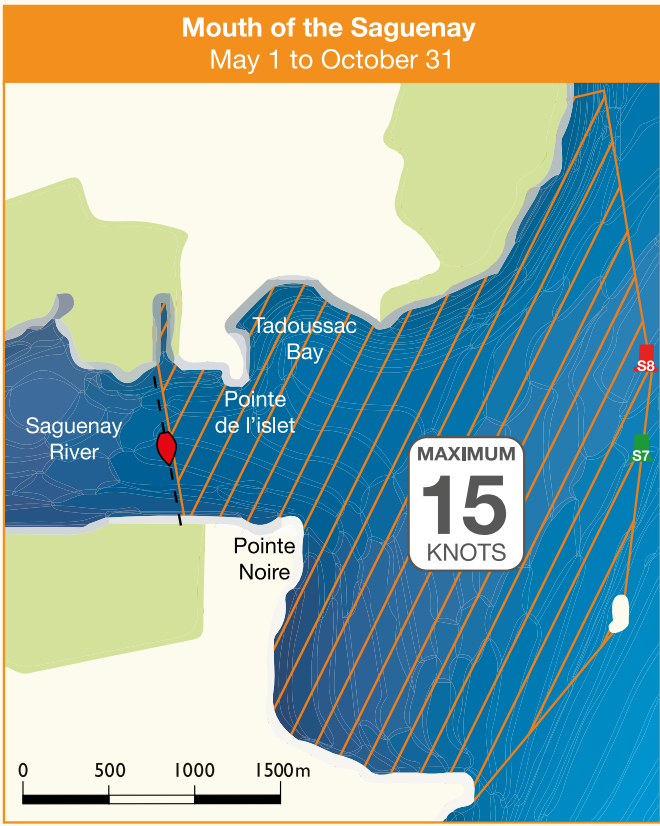
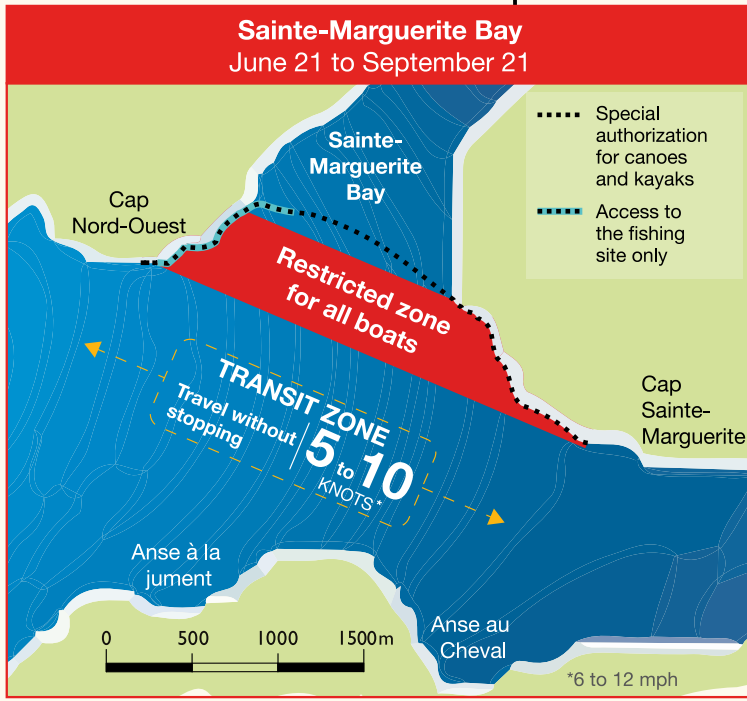
Four migratory great whale species can be seen in the Marine Park in the summer; they are the minke whale, the fin whale, the humpback whale and the blue whale.

The beluga whale and harbour seal are the only marine mammals that live year round in the St. Lawrence Estuary. Can you tell which is which?

To learn more about whales, visit marinepark.qc.ca/get-to-know/



WELCOME TO THE SAGUENAY-ST. LAWRENCE MARINE PARK



LEGEND

- Marine Park information site
- Municipality
- Shuttle
- Ferryboat
- Hiking trail
- First-Nation community
- Saguenay-St. Lawrence Marine Park
- Parc national du Fjord-du-Saguenay
- Other protected areas

0 5 10 15km

5

6

This map is not to be used for legal or navigational purposes.

LIVE THE EXPERIENCE AT SEA AND FROM LAND!



WHALE WATCHING FROM SHORE

SEE THE DISCOVERY NETWORK PAGES 12 TO 15

- 1** Pointe-Noire Interpretation and Observation Centre
- 2** Cap-de-Bon-Désir Interpretation and Observation Centre
- 3** Marine Environment Discovery Centre
- 4 5** Parc national du Fjord-du-Saguenay: Baie-de-Tadoussac sector and Baie-Sainte-Marguerite sector



BY BOAT SEE PAGES 8 AND 9

- 1 4 21** Croisières AML
- 13** Croisières Essipit
- 3** Croisières Escoumins
- 3** Croisières Neptune
- 3** Les Écumeurs du Saint-Laurent
- 7 8** Organisation – Le Québec Hors Circuits
- 6** Parc national du Fjord-du-Saguenay, Baie-Éternité sector
- 4** Tadoussac Autrement



EXPERIENCE THE SEA IN A SEA KAYAK SEE PAGE 10

- 11** Aventure Rose-des-Vents
- 12** Centre de vacances – Ferme 5 étoiles
- 8** Fjord en Kayak
- 14** Katabatik – Aventure dans Charlevoix
- 2** Kayaks du Paradis
- 2 4** Mer et Monde Écotours
- 7 9 11** Organisation – Le Québec Hors Circuits
- 6** Parc national du Fjord-du-Saguenay, Baie-Éternité sector



ON A SAILBOAT SEE PAGE 11

- 4** Damacha – École de voile croisière
- 4** École de voile de l'estuaire
- 4 6 8 9 10** .. Voile Mercator



SCUBA DIVING SEE PAGE 11

- 3 9** Accès plongée Saguenay
- 3 11 12 13** École de plongée Immersion Côte-Nord
- 3** Marine Environment Discovery Centre
- 2** Paradis marin



NATURE OBSERVATION FROM A BOAT SEE PAGE 9

- 4 6 8 9 10 11** Les Navettes maritimes du Fjord
- 6** Parc national du Fjord-du-Saguenay, Baie-Éternité sector
- 7 8** Organisation – Le Québec Hors Circuits
- 21** Société Duvetnor
- 4** Tadoussac Autrement



SPECTACULAR VISTAS AND HIKING TRAILS

SEE THE DISCOVERY NETWORK PAGES 12 TO 15

- 19** Baie de L'Isle-Verte National Wildlife Area
- 2** Cap-de-Bon-Désir Interpretation and Observation Centre
- 15** Centre écologique de Port-au-Saumon
- 21** Îles du Pot à l'eau-de-vie and île aux Lièvres
- 20** Île-Verte Lighthouse Station
- 12** L'Anse-de-Roche
- 8** L'Anse-Saint-Jean
- 3** Marine Environment Discovery Centre
- 17** Parc municipal de la Baie-des-Rochers
- 4 5 6** Parc national du Fjord-du-Saguenay: Baie-de-Tadoussac, Baie-Sainte-Marguerite and Baie-Éternité sectors
- 18** Parc naturel et historique de l'île aux Basques
- 7** Petit-Saguenay
- 1** Pointe-Noire Interpretation and Observation Centre
- 16** Port-au-Persil
- 11** Sainte-Rose-du-Nord



VISIT THE VARIOUS INTERPRETATION CENTRES AND MUSEUMS

SEE THE DISCOVERY NETWORK PAGES 12 TO 15

- 19** Baie de L'Isle-Verte National Wildlife Area
- 2** Cap-de-Bon-Désir Interpretation and Observation Centre
- 13** Centre Archéo Topo
- 15** Centre écologique de Port-au-Saumon
- 4** Chauvin Trading Post
- 20** Île-Verte Lighthouse Station
- 3** Marine Environment Discovery Centre
- 4** Marine Mammal Interpretation Centre
- 9** Musée du Fjord
- 5 6** Parc national du Fjord-du-Saguenay, Baie-Éternité and Baie-Sainte-Marguerite sectors
- 1** Pointe-Noire Interpretation and Observation Centre
- 21** Station exploratoire du Saint-Laurent

EXPERIENCE THE SEA!

Whether you are seeking adventure or a quiet tour on the water, you will be delighted. Take the full measure of wide open spaces, each excursion is unique!

WHEN IS THE BEST TIME TO SEE WHALES?

Opportunities to see whales in the Marine Park are good at any time of the day from early May to the end of October. Depending on the species and their level of activity, whales surface to breathe every 15 to 30 minutes.

WHAT BOAT TO CHOOSE?

The rules governing approaches are the same for whatever type of boat you choose. Your captain will stay within regulated speeds and respect the approach distances to be maintained in the vicinity of whales. While sea-kayaking, your guide will make sure you maintain appropriate distances and navigate in complete safety.

WHAT TO BRING?



Even in summer, it is colder on the water than on land. At around 5°C, the water cools the air above the surface of the Park. Warm, comfortable clothing is highly recommended.

A GUIDED AND SUPERVISED EXCURSION

All businesses presented in this guide hold Saguenay–St. Lawrence Marine Park marine tour permits. Captains and sea-kayak guides working for these businesses must successfully complete relevant regulations training offered by Parks Canada.



Aventure Écotourisme Québec

BOAT EXPERIENCE



ECO-WHALE ALLIANCE MEMBERS

In collaboration with Parks Canada, Sépaq and the Group for Research and Education on Marine Mammals, businesses that are members of the Eco-Whale Alliance are committed to developing best practices for whale watching at sea. Choose a Proud Member!

CROISIÈRES AML

| 800 563-4643 | croisieresaml.com

Cast off and head offshore to encounter giants of the sea! Our certified bilingual naturalist guides are keen to narrate the life stories of these impressive marine mammals. Experience nature from aboard an inflatable vessel or a large boat.

Departures from Baie-Sainte-Catherine, Rivière-du-Loup and Tadoussac



SOCIÉTÉ DUVETNOR

| 877 867-1660 | duvetnor.com

Escape to the islands of the Lower St. Lawrence (Bas-Saint-Laurent) region! Here you will find remarkable biological diversity, cliffs teeming with seabirds and a fascinating maritime history. Guided tours are offered on a daily basis with or without landing.

Departures from Rivière-du-Loup

CROISIÈRES ESSIPIT

| 888 868-6666 | 418 232-6778 | vacancesessipit.com

Personalized whale-watching cruises aboard 12 and 36-passenger inflatable boats. Our experienced guides will share their knowledge of the marine environment. Simply unforgettable: respect and protect whales. Kuei! Welcome!

Departures from Les Bergeronnes

LES ÉCUMEURS DU SAINT-LAURENT

| 888 817-9999 | leseumeurs.com

The Écumeurs offer you a personalized cruise to observe whales and other marine mammals in the Marine Park. Live a unique experience with our professional captains aboard our 12- or 30-passenger vessels.

Departures from Les Escoumins

ORGANISATION – LE QUÉBEC HORS CIRCUITS

| 418 579-8763 | croisieresfjordbaleines.com

Travel to the mouth of the majestic Saguenay Fjord, where it converges with the St. Lawrence Estuary, and encounter whales and other marine mammals. Experience personalized treatment on a human scale that respects the environment aboard a 24-passenger inflatable vessel.

Departures from l'Anse de Saint-Étienne (Petit-Saguenay) and L'Anse-Saint-Jean



PARC NATIONAL DU FJORD-DU-SAGUENAY

| 800 665-6527 | sepaq.com

On leaving one of the most beautiful bays in the Marine Park, take your place aboard an inflatable boat and begin your adventure with our experienced naturalist guides. Discover a protected ecosystem that is unique in the world.

Departures from the Baie-Éternité wharf



TADOUSSAC AUTREMENT

| 418 235-3333 | tadoussacautrement.com

Experience your whale-watching cruise in a different way! Aboard an enclosed 12-passenger Zodiac with removable windows, two enthusiastic and authentic young captains will lead you on a discovery of marine mammals and the Saguenay Fjord.

Departures from Tadoussac beach



PHOTO 9

CROISIÈRE ESCOUMINS

| 866 baleine | 418 233-4061 | croisierebaleine.ca

Set out on an adventure to the whale paradise aboard a new generation of safer and more ecological zodiac-type craft. Experienced captains, theme cruises, whales guaranteed or your money back.

Departures from the private wharf in Les Escoumins

CROISIÈRES NEPTUNE

| 877 7NEPTUNE | croisieresneptune.net

Come aboard our latest generation zodiac-type boats to discover marine mammals. Safety and comfort are guaranteed with experienced captains. Complete high-quality equipment is provided. A family-owned business for more than 25 years.

Departures from Les Escoumins

LES NAVETTES MARITIMES DU FJORD

| 418 543-7630 | | 800 363-7248 | navettesdufjord.com

Transform your travels to include an unforgettable cruise on the Saguenay Fjord (from June to October). Discover various villages and attractions along the way, like the Notre-Dame-du-Saguenay statue and the impressive capes Trinité and Éternité!

Departures from Baie-Éternité, L'Anse-Saint-Jean, La Baie, Saint-Fulgence, Sainte-Rose-du-Nord and Tadoussac



SEA KAYAK EXPERIENCE

AVENTURE ROSE-DES-VENTS

418 675-2625 | aventurerosedesvents.com



Treat yourself to a stunning view of one of the most beautiful villages in Quebec. You will discover utterly incredible stories of its first inhabitants. Personalized tours accessible for all.

Departures from Sainte-Rose-du-Nord

CENTRE DE VACANCES - FERME 5 ÉTOILES

418 236-4833 | 1 877 236-4551 | ferme5etoiles.com



Nature lovers, admire the scenery of the Saguenay Fjord on a sunrise or a sunset cruise. Guided, equipped half-day to 24-hour excursions. Meals and equipment are included for excursions of one day or more.

Departures from L'Anse-de-Roche near Sacré-Coeur

FJORD EN KAYAK

1 866 725-2925 | fjordenkayak.ca



"Canadian Signature Experience." Short, guided excursions on the Fjord (children three years of age and older) and multi-day expeditions with cuisine. Distinctions: small groups, fibreglass kayaks, personalised service, skilled guides.

Departures from L'Anse-Saint-Jean

KATABATIK - AVENTURE DANS CHARLEVOIX

1 800 453-4850 | 418 665-2332 | katabatik.ca



Paddle the Upper St. Lawrence Estuary with expert sea-kayak tour guides. Abundant marine wildlife, amazing geomorphology, the Charlevoix coast is a paradise for paddlers.

Departures from Cap-à-l'Aigle

KAYAKS DU PARADIS

418 232-6237 | campingparadismarin.com

Guided tours with a focus on safety and nature discovery. This adventure sport will give you the feeling that wildlife is so close you can touch it!

Departures from Les Bergeronnes

MER ET MONDE ÉCOTOURS

1 866 637-6663 | meretmonde.ca



Mer et Monde has offered a unique and intimate experience connecting humans to nature for over 20 years. Sea kayaking is a great way to observe Marine Park biodiversity. Half-day or full-day excursions available.

Departures from Les Bergeronnes and Tadoussac

ORGANISATION - LE QUÉBEC HORS CIRCUITS

418 579-8763 | organisation.com



Discover the secrets of the Saguenay Fjord in the company of keen and professional guides. From a simple half-day excursion to a multiple-day expedition, take advantage of personalized outings.

Departures from La Baie, Petit-Saguenay and Sainte-Rose-du-Nord

PARC NATIONAL DU FJORD-DU-SAGUENAY

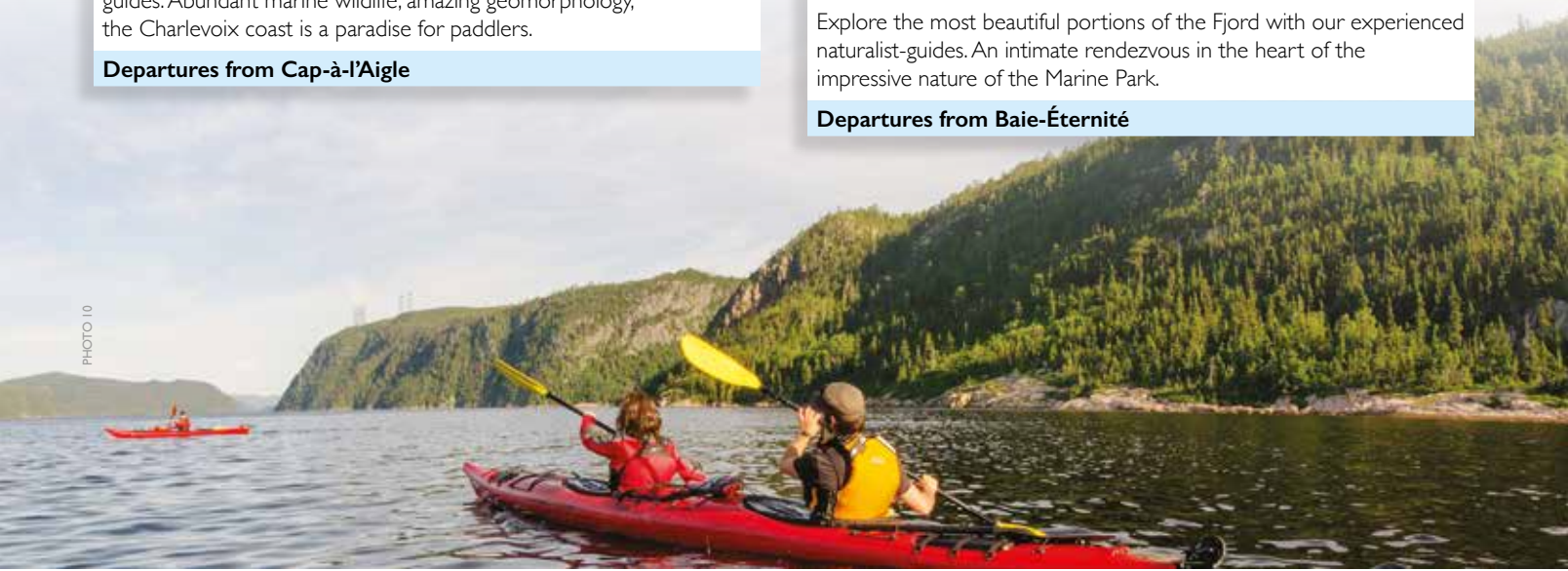
1 800 665-6527 | sepaq.com



Explore the most beautiful portions of the Fjord with our experienced naturalist-guides. An intimate rendezvous in the heart of the impressive nature of the Marine Park.

Departures from Baie-Éternité

PHOTO 10



YOUR SAFETY: YOUR RESPONSIBILITY

Are you planning a seagoing activity without a certified guide? Learn the directives you will need to follow and the required equipment to ensure your outing is safe and enjoyable. Cold water, variable weather conditions, tides and strong currents can complicate your activity. Cellular coverage in the Park is incomplete. Respect your abilities; do not head out on your own. Respect the flora and fauna; keep your distance.



Stay near the coast; fog materializes quickly and it is easy to lose sight of the shore. Due to regular shipping traffic, avoid making "shore-to-shore" crossings.

Visit adventuresmart.ca

EXPERIENCE DIVING

ACCÈS PLONGÉE SAGUENAY

1 800 PLONGÉE (756-6433) | 418 699-1000
accesplongeesaguenay.com

Discover the subaquatic treasures of the St. Lawrence in complete safety with our qualified guides. Dive with a guide from a boat. Advanced divers can experience a night dive in the middle of the day in the Saguenay Fjord.

Departures from Les Escoumins and the La Baie marina

MARINE ENVIRONMENT DISCOVERY CENTRE

418 233-4025 | 418 233-4414 | parcscanada.gc.ca/saguenay

Experience Nordic Snorkelling: a near-shore swim in a wet suit, flippers, mask and snorkel (equipment included). Diving initiation, equipment rental, tank filling (Hyper Pure available), and guided dives are also available. Developed access, change rooms and showers.

41, rue des Pilotes, Les Escoumins

ÉCOLE DE PLONGÉE IMMERSION CÔTE-NORD

418 232-6249 | 1-877-MER-1877 | explosnature.ca/plongee/

From initiation to Divemaster, as well as specialized and upgrading courses, Immersion Côte-Nord invites you to explore the sea from beneath the surface. Prolong the pleasure by means of all-inclusive dive trips.

Departures from L'Anse-de-Roche, Les Bergeronnes, Les Escoumins and Sainte-Rose-du-Nord

PARADIS MARIN

418 232-6237

Launch site, showers and washrooms.

4, chemin Émile-Boulianne, Les Bergeronnes

EXPERIENCE ON A SAILING VESSEL



ÉCOLE DE VOILE DE L'ESTUAIRE

418 235-4474 | 418 928-8378 | voilestuaire.com

Initiate yourself to sailing and discover the wild beauty of the Marine Park. Accompanied by a guide-interpreter, discover fauna, oceanographic phenomena and history. During the expedition you will participate in manoeuvres and learn basic navigation.

Departures from Tadoussac

DAMACHA – ÉCOLE DE VOILE CROISIÈRE

1 866 278-5355 | 418 434-2435 | lavoiledevoile.com

Damacha trains all levels of sailors. Cruise the Fjord, the Estuary and the Gulf from Tadoussac. Experience life aboard a sailboat in the splendour of nature as it was in the days of the discoverers of this world.

Departures from Tadoussac

VOILE MERCATOR

1 888 674-9309 | voilemercator.com

Navigate by sail on the Saguenay Fjord and the St. Lawrence Estuary. Three- to seven-hour beginner excursions, learning sessions and two- to twelve-day courses. Accredited by Sail Canada and Aventure Écotourisme Québec.

Departures from Baie-Éternité, L'Anse-Saint-Jean, La Baie, Saint-Fulgence and Tadoussac



PHOTO 12



A Certificate of Qualification in Recreational Scuba Diving is required for scuba diving. To verify the validity of your certificate and get advice, contact the Quebec Underwater Federation: fqas.qc.ca/en/fqas/

For all diving emergencies contact the hyperbaric centre: 1 888 835-7121.

parcmarin.qc.ca/sea-kayak
parcmarin.qc.ca/diving
parcmarin.qc.ca/boating

LIVE THE EXPERIENCE ON LAND!

The Discovery Network is a land-based circuit that was created to allow visitors to come into contact with the marine environment. Come discover spectacular viewpoints, captivating exhibits and areas steeped in history.

PARKS CANADA

FREE ADMISSION FOR YOUTH 17 AND UNDER. VISIT 3 CENTRES ON THE SAME DAY.



1

PHOTO 13

POINTE-NOIRE INTERPRETATION AND OBSERVATION CENTRE

141, route 138
Baie-Sainte-Catherine
418 237-4383
418 235-4703 (off-season)

parksCanada.gc.ca/saguenay

Latitude: 48.122849
Longitude: -69.718231



Schedule

June 15 to Sept. 2: Everyday
Sept. 3 to Oct. 14: Friday to Sunday and holiday

Admission

Adult: \$5.80
Senior: \$4.90
Youth: free
Family/Group: \$11.75
Taxes included



2

PHOTO 14

CAP-DE-BON-DÉSIR INTERPRETATION AND OBSERVATION CENTRE

13, ch. du Cap-de-Bon-Désir
Les Bergeronnes
418 232-6751
418 235-4703 (off-season)

parksCanada.gc.ca/saguenay

Latitude: 48.276413
Longitude: -69.476064



Schedule

June 15 to Sept. 8: Everyday
Sept. 9 to Oct. 14: Wednesday to Sunday and holiday

Admission

Adult: \$7.80
Senior: \$6.80
Youth: free
Family/Group: \$15.70
Taxes included



3

PHOTO 15

MARINE ENVIRONMENT DISCOVERY CENTRE

41, rue des Pilotes
Les Escoumins
418 233-4414
418 235-4703 (off-season)

parksCanada.gc.ca/saguenay

Latitude: 48.319463
Longitude: -69.413187



Schedule

June 15 to Sept. 2: Everyday
Sept. 3 to Oct. 14: Friday to Sunday and holiday

Admission

Adult: \$7.80
Senior: \$6.80
Youth: free
Family/Group: \$15.70
Taxes included

SÉPAQ

FREE ADMISSION FOR YOUTH 17 AND UNDER. VISIT 3 SECTORS ON THE SAME DAY.



4

PHOTO 16

BAIE-DE-TADOUSSAC SECTOR POINTE-DE-L'ISLET ET SENTIER LE FJORD

Tadoussac
1 800 665-6527

sepaq.com/saguenay

Latitude: 48.141032
Longitude: -69.725468

Schedule

May 17 to October 14: everyday

Admission

(Le Fjord trail only)
Adult: \$8.75
Youth: free
Taxes included



5

PHOTO 17

BAIE-SAINTE-MARGUERITE SECTOR

1121, route 172 Nord
Sacré-Cœur
1 800 665-6527
418 236-1162

sepaq.com/saguenay

Latitude: 48.264924
Longitude: -69.945434

Schedule

May 17 to October 14, everyday

Admission

Adult: \$8.75
Youth: free
Taxes included



6

PHOTO 18

BAIE-ÉTERNITÉ SECTOR

91, rue Notre-Dame
Rivière-Éternité
1 800 665-6527
418 272-1556

sepaq.com/saguenay

Latitude: 48.2576
Longitude: -70.4016

Schedule

May 17 to October 14, everyday

Admission

Adult: \$8.75
Youth: free
Taxes included

Indulge in outdoor activities on land, at sea and in the air! Hiking trails provide extraordinary views onto the Fjord from Tadoussac to Éternité Bay. Try the *Via ferrata des Géants* with its impressive aerial pathways. Observe beluga whales from the lookout terrace on the shores of Sainte-Marguerite Bay and discover the fascinating universe of this protected species with the help of our naturalist-guides.

sepaq.com/saguenay



Parc national
du Fjord-du-Saguenay

SAGUENAY

PETIT-SAGUENAY



7

Discover the Fjord at two exceptional locations: the wharf, with its magical sunsets, and Saint-Etienne beach, a haven of peace in rhythm with the tides.



Tourist information
61, rue Dumas
Petit-Saguenay
418 272-3219
petit-saguenay.com
Latitude: 48.209261
Longitude: -70.067463

Schedule
May 15 to November 1

Admission
Free



PHOTO 19

L'ANSE-SAINT-JEAN



8

One of the most beautiful villages in Quebec, L'Anse-Saint-Jean invites you to experience nature along the shores of the majestic Saguenay Fjord. Take advantage of a wide range of quality outdoor activities for the whole family.



3, rue du Couvent
L'Anse-Saint-Jean
418 272-2633
lanse-saint-jean.ca
Latitude: 48.233554
Longitude: -70.205869

Visitor kiosk

Schedule
Late June through
mid-September: Every day
Tel: 418 272-2974

Admission
Free

PHOTO 20

MUSÉE DU FJORD



9

Discover the undersea world of the Saguenay Fjord. Get to the bottom of life in the Fjord in a wonderful learning environment through exhibits, excursions and entertaining animations.



3346, boul. de la Grande-Baie Sud
Saguenay (La Baie borough)
418 697-5077
1 866 697-5077
museedufjord.com
Latitude: 48.317447
Longitude: -70.853845

Schedule
June 24 to Sept. 2:
Every day

September 3 to June 23:
Tuesday to Sunday

Admission
Adults: \$16
Children (6 to 17): \$9
Family and group rates
available

PHOTO 21

SAINTE-ROSE-DU-NORD



11

Visit the "Pearl of the Fjord", a town set in a valley between capes with kilometres of trails that lead to the most beautiful panoramic vantage points onto the Fjord.



126, rue de la Descente-des-Femmes
Sainte-Rose-du-Nord
418 675-2250
ste-rosedunord.qc.ca
Latitude: 48.388247
Longitude: -70.586991

Corporation nautique du quai:

Schedule May to October

Tourist Information
213, rue du Quai

Schedule
June to September
418 675-2250 ext. 2608

Admission
Free



PHOTO 22

ANSE-DE-ROCHE WHARF



12

A seaport surrounded by majestic landscapes with unforgettable sunsets. Picnic area, kayak outings. Situated 12 nautical miles from Tadoussac.



346, ch. de l'Anse-de-Rocher
(Via route 172)
Sacré-Coeur
Latitude: 48.218251
Longitude: -69.87456

Schedule
Early June to the end
of September

Admission
Free entry

Boat launch:
Boats: \$11.50 + tx
Kayaks: \$6.35 + tx

Information for the marina:
418 236-4325

PHOTO 23



PHOTO 24

CÔTE-NORD

MARINE MAMMAL INTERPRETATION CENTRE (CIMM)



4

PHOTO 25

Where are the whales? Who are they? What are researchers doing? A visit to this centre is a must! Exhibition, collection of real skeletons, film, specialists. Take part in whale-song classes.



108, rue de la Cale-Sèche Tadoussac

418 235-4701

baleinesdirect.org
gremm.org

Latitude: 48.138325
Longitude: -69.719292

Schedule

Mid-May to mid-October:
Every day

Admission

Adults: \$12 (plus taxes)
Accompanied children
(17 and under): Free



CHAUVIN TRADING POST



4

PHOTO 26

Relive the birth of New France through a reconstitution of the site of the earliest exchanges between Amerindians and Europeans. Discover the history of first contacts through a playful, interactive exhibit.

157, rue du Bord-de-l'Eau
Tadoussac



418 235-4657
418 235-4446 ext. 229

tadoussac.com

Latitude: 48.140815
Longitude: -69.716425

Schedule

June to October: Every day
May: upon reservation,
with groups

Admission

Adults: \$6 | Seniors: \$4
Children and students: \$3
Children 6 and under: free
Taxes included.
Fees subject to change



CENTRE ARCHÉO TOPO



13

PHOTO 27

Explore the exhibit on human occupation of the North Shore (Côte-Nord) from the first Indigenous to the present day. Discover the lives of ancient Indigenous communities. Pottery, beading, dream-catcher fabrication and stone-cutting workshops.



498, rue de la Mer
Les Bergeronnes

418 232-6286

archeotopo.com

Latitude: 48.228976
Longitude: -69.553217

Schedule

Mid-May to mid-October

Admission

Family: \$17
Adults: \$8
Seniors: \$7
Students: \$5
Children (7-12): \$4
Group rates
Taxes included



CHARLEVOIX

CENTRE ÉCOLOGIQUE DE PORT-AU-SAUMON



15

PHOTO 28

Hike our interpretive trails in the company of a nature guide. Observe and handle various marine organisms.

3330, boul. Malcolm-Fraser
(route 138) La Malbaie
(Saint-Fidèle sector)

418 434-2209
1 877 434-2209

cepas.qc.ca



Latitude: 47.765055
Longitude: -69.952247

Schedule

June 22 to August 15

Admission

Nature Trail (1 or 2 hours)

Adult: \$5 or \$10

Child: \$3 or \$5

Pools with marine organisms

(1 hour) Adult: \$10 | Child: \$5

Activity taking place at low tide, by reservation only (2 hours) (Adult: \$10) (Child: \$5)

Discounted fees for families and packages available

PORT-AU-PERSIL



16

PHOTO 29

A haven of peace in phase with the tides, Port-au-Persil is a member of the "Association des plus beaux villages du Québec" (Association of Quebec's Most Beautiful Villages).



555, chemin de Port-au-Persil
Saint-Siméon
Municipality of Saint-Siméon

418 620-5010

saintsimeon.ca

Latitude: 47.807676
Longitude: -69.899472

Schedule

Year round

Admission

Free

PARC MUNICIPAL DE LA BAIE-DES-ROCHERS



17

PHOTO 30

Hike one of the marked trails and take time out to enjoy the delightful surroundings and breath-taking views of the St. Lawrence Estuary.



Baie-des-Rochers
Municipality of Saint-Siméon

418 620-5010

saintsimeon.ca

Latitude: 47.953704
Longitude: -69.812831

Schedule

Spring to fall

Admission

Free

PARC NATUREL ET HISTORIQUE DE L'ÎLE AUX BASQUES



18

PHOTO 31

A heritage treasure trove, l'île aux Basques is a national historic site, migratory bird refuge and nature reserve. Discover the attractions through a three-hour guided tour or by staying in a rustic cottage.

Boarding:
Trois-Pistoles Marina
(by reservation only)
418 851-1202
provancher.org/ile-aux-basques/
Latitude: 48.133079
Longitude: -69.184890



Schedule

Stay in a cottage:
May 13 to October 14
Guided tour:
June 4 to September 3
Variable departure times,
depending on tides

Tarifs

Guided visit by reservation:
Adults: \$30.50
Youth (7-14): \$17.25
Children (6 and under):
7.25 \$
Taxes included

Access fee for the park (during a guided visit):

Adults: 8 \$
Children and Youth: Free
Member of the Provancher
Natural History Society of
Canada: Free

BAIE DE L'ISLE-VERTE NATIONAL WILDLIFE AREA



19

PHOTO 32

Follow the trails on the Estuary's south shore and observe the largest grassy salt marsh along the St. Lawrence.



La Maison Girard
Interpretation Centre
371, route 132 Est
L'Isle-Verte
418 898-2757
418 867-8882, ext. 201
(Low season)
ec.gc.ca/ap-pa

parcbasstlaurent.com/
kiskotuk

Latitude: 48.023512
Longitude: -69.327132

Schedule

Mid-June to September 1

Admission

Free

ÎLE-VERTE LIGHTHOUSE STATION



20

PHOTO 33

Guided visit of the lighthouse and museum. Observe whales and seals from the shore. On July 13, participate in activities related to the Journée québécoises des phares (Quebec Lighthouse Day). Accommodation available at the Les maisons du Phare Inn.



Les Maisons du Phare
de l'île Verte
2802, chemin du Phare
Notre-Dame-
des-Sept-Douleurs
418 898-2730

phareileverte.com

Latitude: 48.051006
Longitude: -69.423616

Schedule

June 10 to September 17

Off season: group
reservations only.

Ferry crossing regulated by
the tide
traverseileverte.quebec/

Fees

Applicable for lodging

ST. LAWRENCE EXPLORATION CENTRE



21

PHOTO 34

Discover St. Lawrence marine resources in their natural surroundings. Touch, observe and allow yourself to be guided to the core of an amazing array of flora and fauna.



80, rue Mackay,
Rivière-du-Loup
418-867-8796
418-867-8882 ext. 206
romm.ca

Latitude: 47.860305
Longitude: -69.552173

Schedule

June 9 to September 1

Admission

Adults: \$7.50
Children (6-17): \$4
Family and group rates
available

ÎLES DU POT À L'EAU-DE-VIE AND ÎLE AUX LIÈVRES



21

PHOTO 35

Ecotourism experience, with a visit to bird sanctuaries, romantic nights on an island, guided cruises, hiking in a natural environment and exploration of historical sites.



200 rue Hayward
Rivière-du-Loup
1 877 867-1660
duvetnor.com

Latitude: 47.84729
Longitude: -69.567567

Schedule

Early June to the end
of September

Admission

Depending on the tour and
duration of the stay



Accessibility has been
evaluated by Kéroul.

For more information, see
keroul.qc.ca.



(Print) Cat. Number R61-50E
ISSN 1910-5894
(Online) Cat. Number
R61-50E-PDF
ISSN 1929-0950

PHOTO CREDITS:


Parks Canada / Martial Tremblay:	cover
Parks Canada / J.-L. Provencher:	1, 2, 30, 36
Parks Canada / M. I. Rochon:	3, 4, 6, 7, 13, 14, 15
Parks Canada / M. Loiseau:	5, 10, 11, 17
Parks Canada / M. Lajoie:	8
Parks Canada / L. Lévesque:	9, 22, 24, 31
Louis Falardeau:	12
Parks Canada / V. Busque:	16, 33
Sépaq / Luc Rousseau:	18
Laurent Lavoie:	19
L'Anse-Saint-Jean / J. Grosse:	20
Musée du Fjord:	21
Sépaq, Parc national du Fjord-du-Saguenay:	23
GREMM / M. Loiseau:	25
Patrick Noël:	26
Archéo Topo / P. Provencher:	27
Centre écologique de Port-au-Saumon:	28
GOXplore / Port-au-Persil:	29
PARC Bas-St-Laurent:	32
Studio du Ruisseau / SMQ:	34
Jean Bédard / Sauvagiles:	35




NEED MORE INFORMATION ABOUT THE MARINE PARK?

Saguenay–St. Lawrence Marine Park

pc.infossl@canada.ca | marinepark.qc.ca

 Follow us on facebook.com
SaguenayStLawrenceMP

 Share your #marineparkmoment
#SSLMarinePark

Parks Canada

182, rue de l'Église
Tadoussac (Quebec) G0T 2A0
418 235-4703 | 1 888 773-8888
information@pc.gc.ca
parkscanada.gc.ca

Sépaq

91, rue Notre-Dame
Rivière-Éternité (Quebec) G0V 1P0
418 272-2767 | 1 800 665-6527
parc.marin@sepaq.com
sepaq.com

Marine Park Information Station

LA MALBAIE (Saint-Fidèle sector)
Visitor Centre, 2820, boul. Malcom-Fraser
418-434-2299

BAIE-SAINTE-CATHERINE

Baie-Sainte-Catherine Wharf
151, route 138

To help you plan your stay...

TOURISME BAS-SAINT-LAURENT

418 867-1272 | 1 800 563-5268
bassaintlaurent.ca

TOURISME CHARLEVOIX

418 665-4454 | 1 800 667-2276
tourisme-charlevoix.com

TOURISME SAGUENAY-LAC-SAINT-JEAN

418 543 9778 | 1-877-BLEUETS (253-8387)
saguenaylacsaintjean.ca

TOURISME CÔTE-NORD

418 294-2876 | 1 888 463-5319
tourismecote-nord.com

Ferry Schedules and Information

ESCOUMINS / TROIS-PISTOLES

418 851-4676 | 1-877-851-4677
traversiercnb.ca

RIVIÈRE-DU-LOUP / SAINT-SIMÉON

418 862-5094 | 418 638-2856
traverserdl.com

BAIE-SAINTE-CATHERINE / TADOUSSAC

418 235-4395
traversiers.gouv.qc.ca

IN CASE OF EMERGENCY

CANADIAN COAST GUARD

Search and Rescue
1 800 463-4393

VHF Channel 16 (156.8 MHz)
Available 24 hours a day, 7 days a week
Cellular Phone *16

Marine Pollution
1 800 363-4735

PARKS CANADA

Concerning collisions with or
disturbances of marine mammals
1-866-508-9888
Available 24 hours a day, 7 days a week

RÉSEAU QUÉBÉCOIS D'URGENCES POUR LES MAMMIFÈRES MARINS

(Quebec Marine Mammal Emergency
Response Network) Concerning a marine
mammal that is either wounded or in trouble
1 877 722-5346

Available 24 hours a day, 7 days a week



SAGUENAY-ST. LAWRENCE
MARINE PARK
Canada Québec

CETTE PUBLICATION EST AUSSI DISPONIBLE
EN FRANÇAIS