



Riding Mountain
National Park

Visitor Guide and Map Winter



Aussi disponible en français.



Parks
Canada

Parcs
Canada

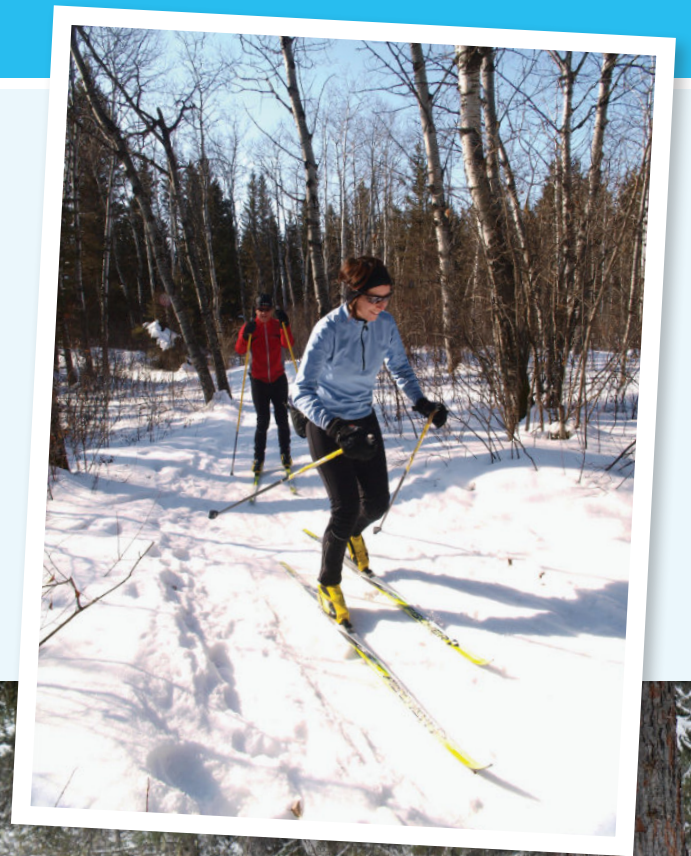
Canada

Cross-country Skiing

Ski under the sun or the stars and lights when you explore the beautiful Wasagaming Campground network day or night.

Just outside of Wasagaming you can kick and glide the trackset along the nearby 3.2km Lake Katherine loop.

If you're looking for more of a challenge try the Compound loop, Oak Ridge or Grey Owl ski trails. Groomed ski options waiting just for you!



Wasagaming Townsite Map



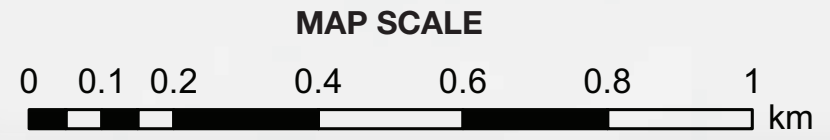
CLEAR LAKE

Wasagaming Camground
Winter Entrance and oTENTiks

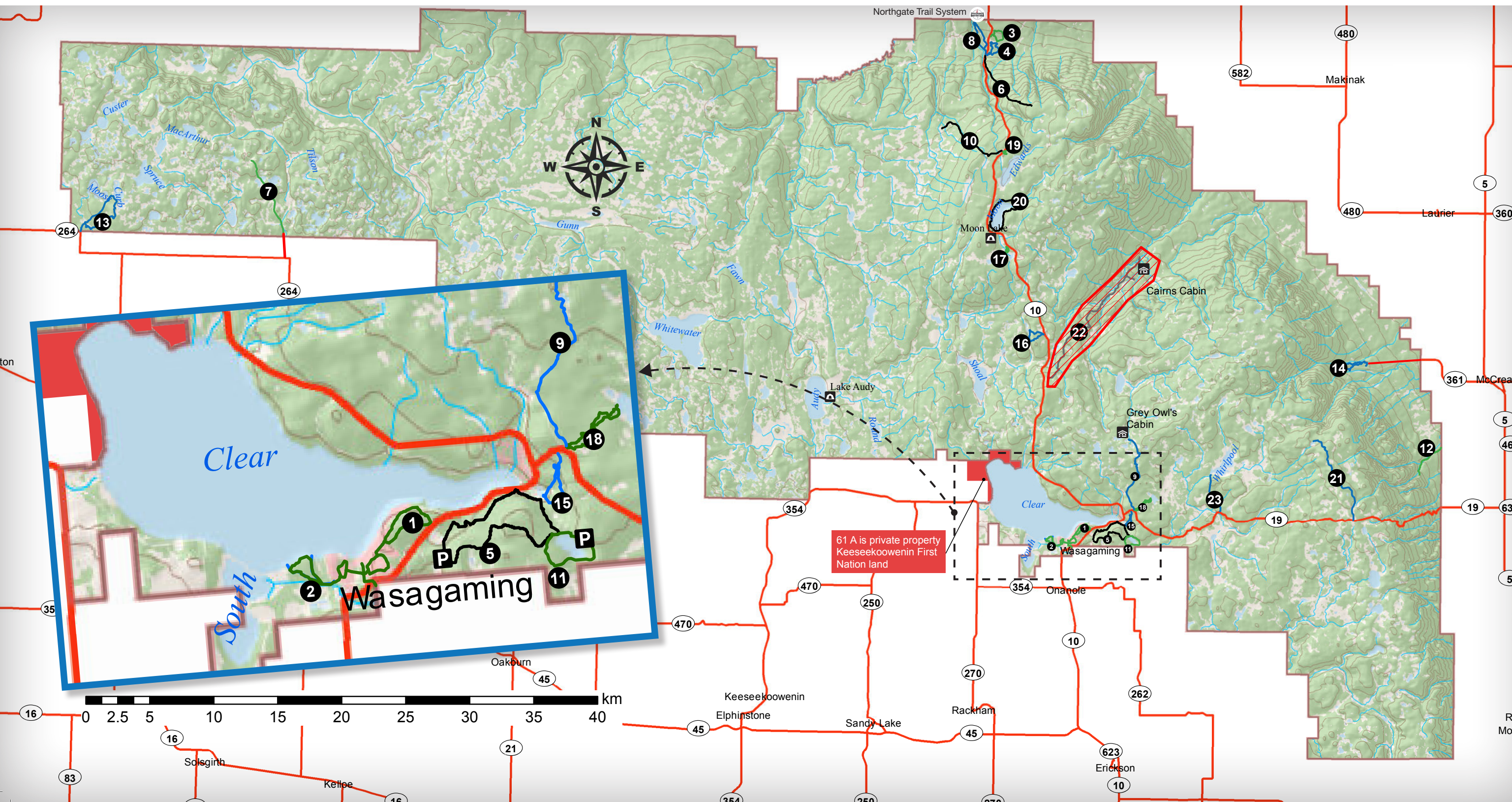


LEGEND

- Classic Ski Trail** (Red dashed line)
- Multi-Use Trail** (Blue and red dashed line)
- Walking Trail** (Yellow solid line)

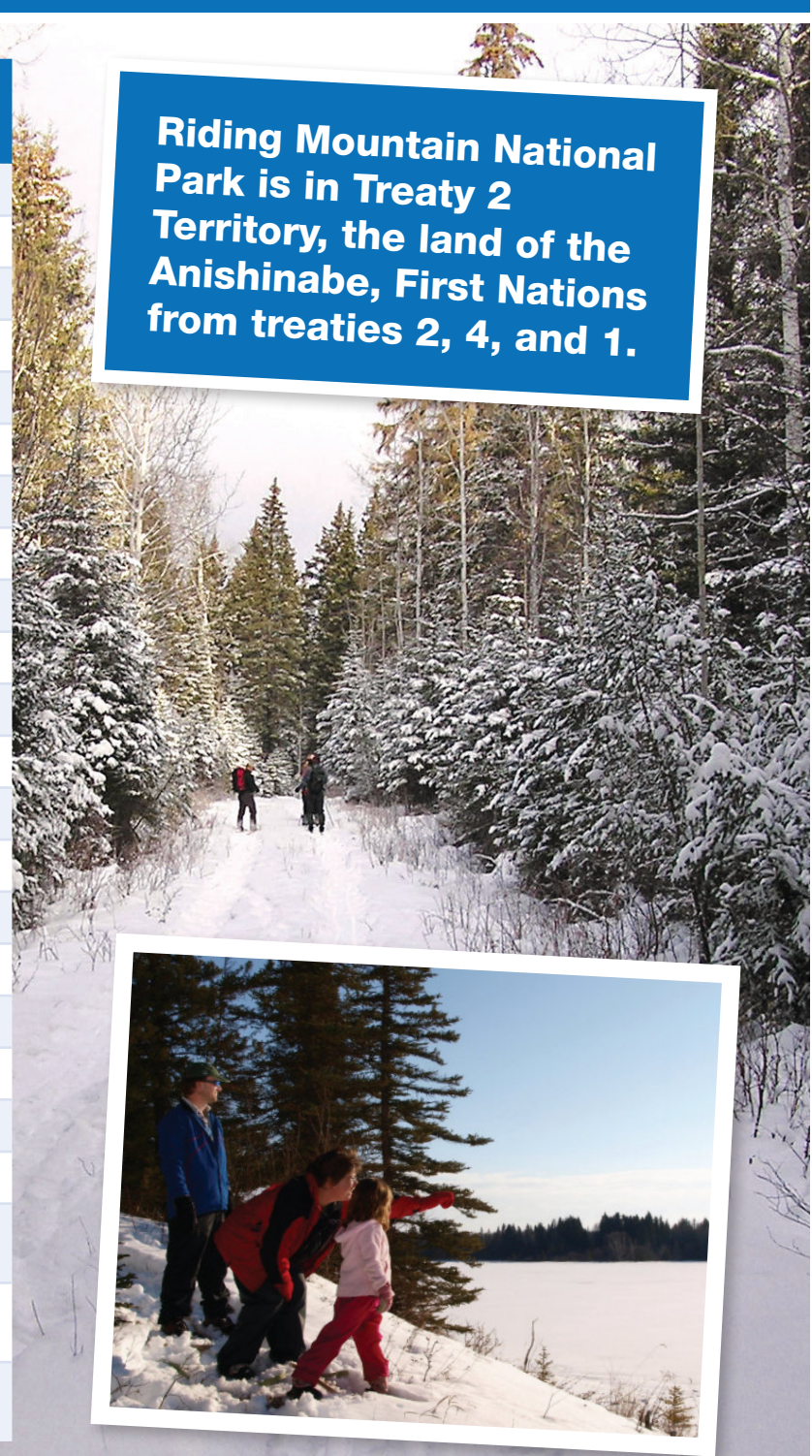


Winter Trails



No.	Trail	Use	Distance (km)	Difficulty	
1	Wasagaming		Various	Easy	
2	South Lake		3.4	Moderate	
3	Beach Ridges		3.5	Easy	
4	Broadleaf		4.1	Moderate	
5	Compound		8.2	Difficult	
6	Crawford Creek		5.0	Difficult	
7	Deep Lake		5.0	Easy	
8	Edwards Creek		5.4	Moderate	
9	Grey Owl		8.9	Moderate	
10	Hilton		6.4	Difficult	
11	Lake Katherine		3.2	Easy	
12	Lower Bald Hill		3.4	Easy	
13	Moose Lake		11.2	Moderate	
14	Oak Ridge		5.6	Moderate	
15	Arrowhead		3.4	Moderate	
16	Bead Lakes		4.0	Moderate	
17	Boreal		1.0	Easy	
18	Brûlé		4.1	Easy	
19	Kippan's Mill		1.2	Easy	
20	Moon Lake		9.2	Difficult	
21	North Escarpment		Wilderness	8.7	Moderate
22	Ochre River to Cairns Cabin		Wilderness	CLOSED	
23	Whirlpool Lake		Wilderness	3.4	Moderate

Riding Mountain National Park is in Treaty 2 Territory, the land of the Anishinabe, First Nations from treaties 2, 4, and 1.



Learn More

■ AdventureSmart

AdventureSmart is a national program dedicated to encouraging Canadians and visitors to Canada to get informed and go outdoors. Always pre-plan and tell someone your plan before you go!

adventuresmart.ca

For more information about Riding Mountain National Park and activities in the area:

■ Riding Mountain National Park

pc.gc.ca/riding

204-848-7275

rmnp.info@pc.gc.ca

■ Friends of Riding Mountain National Park

For snowshoe and fat bike rentals and park merchandise.

friendsofridingmountain.ca

204-848-4037

friends.rmnp@mymts.net

■ Clear Lake Country

discoverclearlake.com

■ Follow us! Tag us!

@RidingNP #RidingNP #homeofwinter



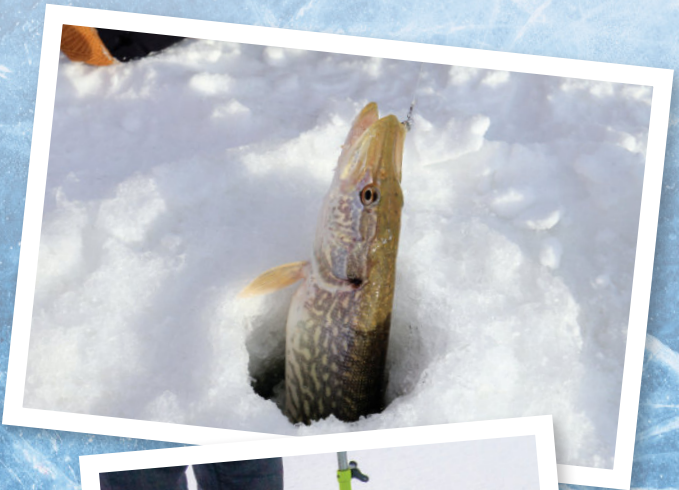
Ice Fishing

Love ice fishing? Try your luck at either Clear Lake or Lake Audy.

Fishing licenses can be purchased at the Park Administration Office, the South Gate, Friends of Riding Mountain, and after hours at Elkhorn Resort. Check out our website for more information.

Parks Canada does not monitor natural ice surfaces for safety or mark potential hazards.

pc.gc.ca/en/pn-np/mb/riding/activ/rec/activ1-fsh



Winter Visitor Safety

- **Plan** your outing around the weather forecast, snow conditions, and the distance you will be travelling. Travel in groups of at least three people.
- **Plan** to get back before nightfall.
- **Inform** someone of your itinerary.
- **Make sure** you're equipped to survive several hours in the cold and in case of an emergency situation.



Visitors are expected to plan and prepare for their trip before they leave home. Travelers in all seasons should be self-reliant and fully prepared to deal with any mishaps which may arise on their outings.

COVID-19 and your visit to Riding Mountain National Park

For the latest updates go to our website: <https://www.pc.gc.ca/en/pn-np/mb/riding/visit/covid-19-info>



Skating

Skate under the festive lights and snow-covered trees behind the Parks Canada Visitor Centre.

Afterwards, roast some hot dogs over the wood stove located inside the Visitor Centre picnic shelter. This popular skating location is favoured for its intimate feel, where you're out of the elements and surrounded by the picturesque beauty of the park in winter.



Winter Picnics

Grab your favorite picnic, a blanket, and set up at one of our many public fire pits to enjoy a unique outdoor experience.

Food has never tasted as good as it will outside in the cool winter air alongside a warm fire. Treat yourself to a date location at Lake Katherine or Glen Beag.



Home of Winter

Come explore the home of winter in Riding Mountain National Park.

The vast forest becomes a personal space just for you to explore. The quiet in the air is exactly what calls you to break away from busy schedules. The park comes alive with winter animals and gentle falling snowflakes that create the perfect peaceful backdrop. We are the **Home of Winter**.



Explore the Park on **Snowshoes**



Discover your own path through the fresh white blanket of snow on snowshoes. Stay on a trail or let your snowshoes lead you on your own adventure.

Bring your own snowshoes or rent a pair from Friends of Riding Mountain National Park. For short adventures, snowshoe around the Wasagaming Campground or Ominnik Marsh. If you're more adventurous drive the Riding Mountain Parkway and explore Moon Lake or Bead Lakes trails. Looking to stay close to Wasagaming? Arrowhead and the Brule trail to Kinosao Lake really connect you with nature.

Pick up a **Fat Bike**

Try a fat bike!

When exploring Wasagaming this winter, introduce yourself to fat biking by renting a bike from "Friends of RMNP". Level up and pedal the Arrowhead and Brule trails. If you are ready for more, head to the Northgate Trail System on the edge of the park near Dauphin for a day of dedicated single track.

<https://northgatetrails.com/index.php/winter-visit/fat-biking>



Please don't walk, bike or snowshoe on the groomed ski trails. Leave them for the cross country skiers!



Sleepover in an oTENTik

Don't want the hassle of winter camping, but still love the outdoors? Check out one of the winterized oTENTiks at Moon Lake or Wasagaming Campground.

An oTENTik is a cross between a cabin and a tent with wood floors and canvas siding, picnic table, and fire pit. Sleeping won't be a problem for you and your friends with bunk beds that sleep six comfortably. Our oTENTiks are newly insulated and equipped with wood stoves to keep you warm. There are plenty of nearby ski and hiking trails to explore during the day, and you can experience a sky full of northern lights and stars every night.



Contact Us



■ Riding Mountain National Park Administration

Office Hours:

Monday - Friday, 8 a.m. – 12 p.m. and
12:30 p.m. - 4 p.m.

■ Riding Mountain National Park South Gate

Entrance Hours:

- Friday, 2 p.m. – 8 p.m.
- Saturday & Sunday, 10 a.m. – 6 p.m.

■ To Make a Reservation for an oTENTik:

Cairns Cabin is currently unavailable for rental.

PCRS takes reservations:

1-877-737-3783 or reservation.pc.gc.ca

■ Police | Fire | Ambulance

204-848-2442

■ Emergency 911

■ 24 Hour Emergency Service, Visitor Safety, Wildlife & Park Enforcement

1-877-852-3100

Remember: A valid Park pass is also required when visiting us in the Winter.