

Clear Lake Map



Wasagaming Townsite Map



Contact Us

Aquatic Invasive Species

Trail Key

Legend

Welcome to Riding Mountain



Emergency
911 - Police, fire, ambulance

Parks Canada Dispatch
1-877-852-3100 - Missing, lost persons, overdue persons (search and rescue), first aid, poaching, wildfires, wildlife mortality, park violations, off-leash pets

Riding Mountain National Park Administration
204-848-7275 or rmnp.info@pc.gc.ca

Riding Mountain National Park Visitor Centre
Come and see us at the newly renovated Visitor Centre! 133 Wasagaming Dr, Wasagaming

Parks Canada Campground Reservation Service
1-877-737-3783 or reservation.parkscanada.gc.ca

Follow Us! Tag Us!
@RidingNP #RidingNP
@parks.canada #parkscanada



Protect our Lakes
Call 204-848-7275 for inspection info

Before you hit the water it is mandatory to get a free aquatic invasive species (AIS) inspection of all your watercrafts - boats, kayaks, canoes, beach toys, paddleboards, and flotation devices.

AIS Inspection Station Hours
Boat Cove: 8 am - 8 pm daily
Decontamination station: 10 am - 6 pm daily

Gone Fishin'
Before you land a fish like a northern pike or walleye, make sure you pick up your national park fishing license and regulations at the Administration Building, Visitor Centre, Wasagaming Campground, or entrance gates.

To learn more or to register for the Boat Permit Course visit:
pc.gc.ca/en/pn-np/mb/riding/nature/conserv/aqua

Trail Name	Distance (km)	Use	Type
BU Brûlé	4.2	[Hike] [Bike]	Loop
LK Lake Katherine	3.5	[Hike] [Bike]	Loop
LW Lakeshore Walk	1.3	[Hike] [Bike]	One way
ON Old North Shore Road	2.4	[Hike] [Bike]	One way
OM Ominnik Marsh	0.6	[Hike] [Bike] [Wheelchair]	Loop
AH Arrowhead	3.4	[Hike] [Bike]	Loop
NS Clear Lake North Shore	7.9	[Hike] [Bike]	One way
SS Clear Lake South Shore	7.0	[Hike] [Bike]	One way
CL Cowan Lake	3.3	[Hike] [Bike]	One way
GO Grey Owl	7.4	[Hike] [Bike]	One way
KI Kinosaio	4.1	[Hike] [Bike]	One way
OT Onanole Trail	5.0	[Hike] [Bike]	One way
SL South Lake East	0.8	[Hike] [Bike]	One way
SL South Lake West	1.1	[Hike] [Bike]	One way
WT Wasagaming Trail	5.1	[Hike] [Bike]	One way



SCAN HERE FOR TRAIL CONDITIONS



- [Wheelchair] Accessible
- [Tent] Backcountry camping
- [Bike] Bike
- [Boat] Boat inspection station
- [Boat] Boat launch
- [Boat] Boat trailer parking
- [Tent] Camping
- [Trash] Decontamination
- [Car] Electric car charging station
- [Firewood] Firewood
- [Toilet] Flush toilet
- [Hike] Hike
- [Horse] Horseback riding
- [Carriage] Horse drawn carriage
- [Beach] Main beach
- [Marina] Marina
- [No fishing] No fishing
- [Tent] oTENTik
- [Entrance] Park entrance
- [P] Parking
- [Playground] Playground
- [Picnic] Picnic
- [Privacy] Privacy
- [Shower] Shower
- [Swimming] Swimming
- [Tennis] Tennis
- [Visitor Centre] Visitor Centre
- [Green dot] Easy trail
- [Blue square] Medium trail
- [Black diamond] Difficult trail
- [Highway] Highway and roadway

Riding Mountain National Park is home to a staggering diversity of living things. It is a vast protected space filled with remote trails, star-filled skies, and vivid sunsets. It is ready for your memories.

We recognize that the park sits in Treaty 2 territory and at the crossroads of Treaties 1 and 4.

Cell coverage
Cell phone service can be limited. Let someone know where you are going before you start your adventure.

Protect us from pests
inspection.gc.ca

Keep our forest safe by not moving firewood. There could be invasive pests - like the emerald ash borer - hiding in the wood. Wasagaming campers can purchase firewood at the campground.

Weather watch
weather.gc.ca/warnings | alertready.ca

The weather can change in an instant. Tune into media warnings and take shelter if necessary.

Keep it clean and green
Garbage and recycling is available throughout the park, with two depots located in Wasagaming.

Summer Visitor Guide and Map

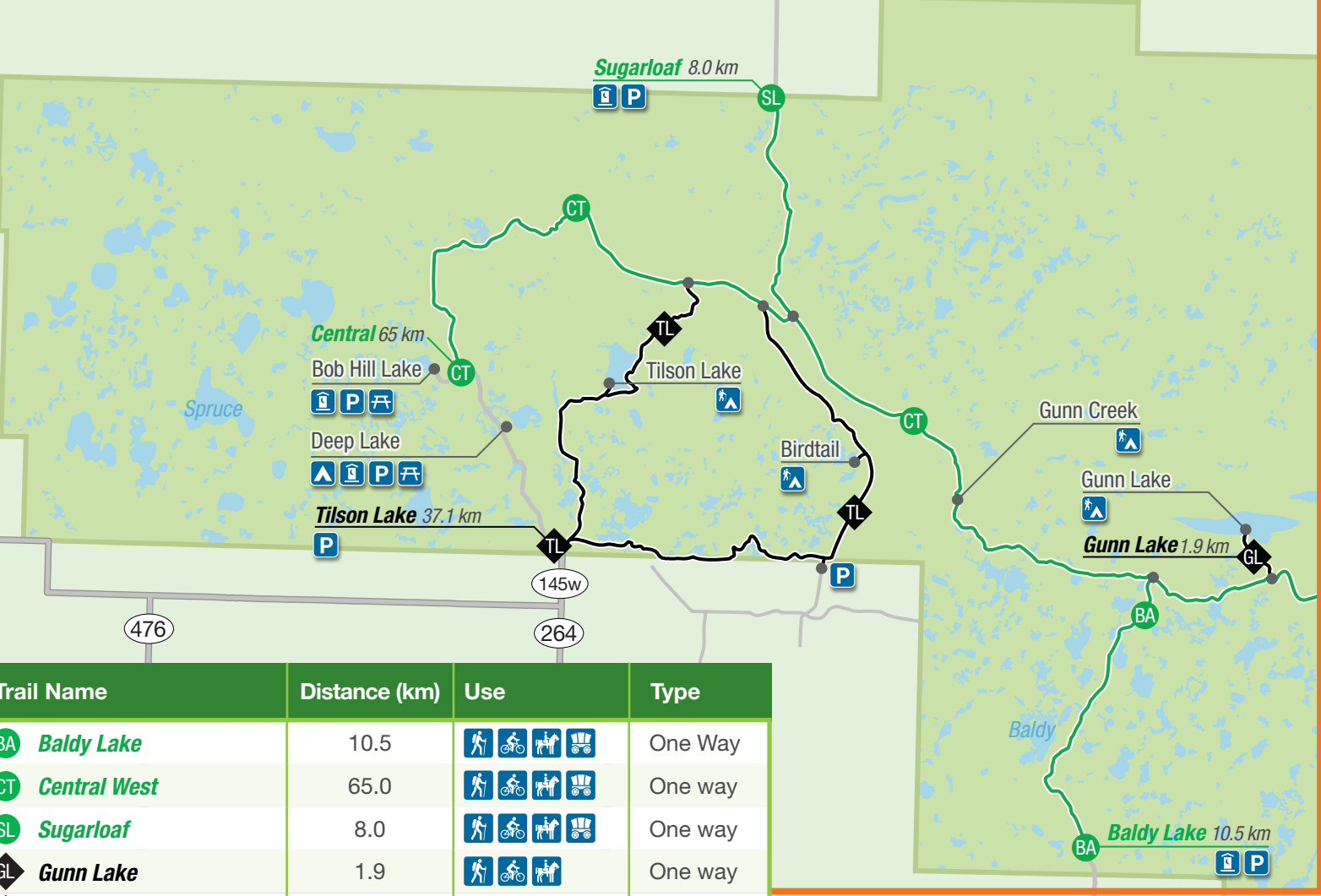


Aussi disponible en français

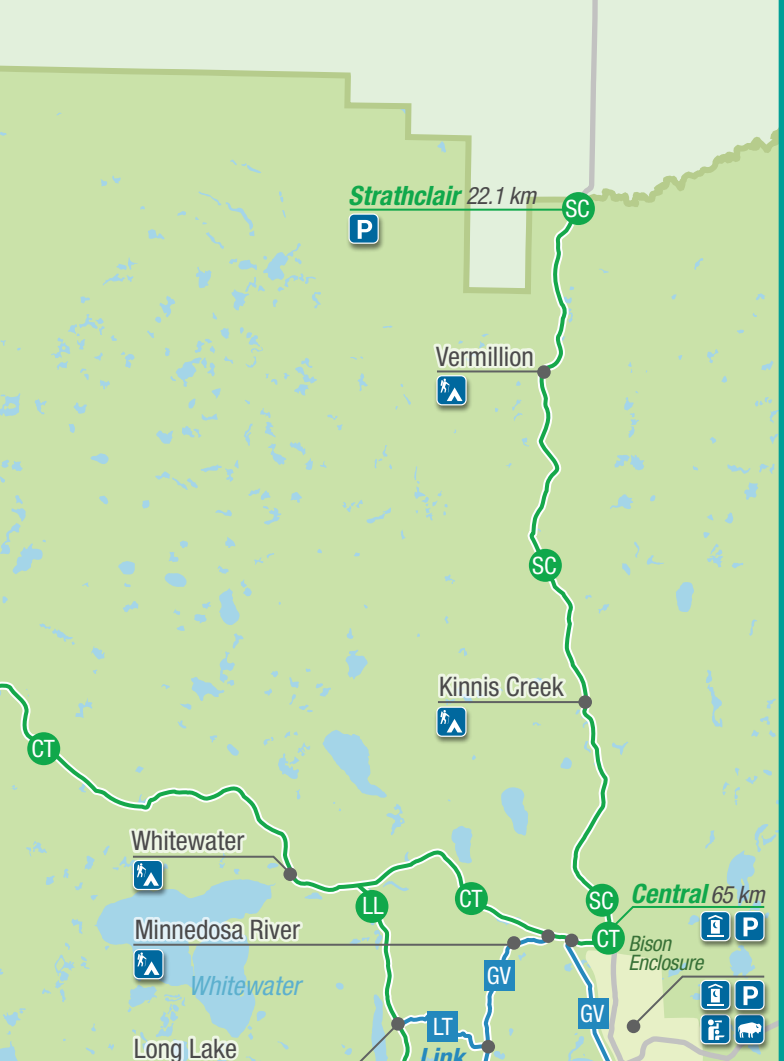
VISIT OUR WEBSITE
pc.gc.ca/en/pn-np/mb/riding



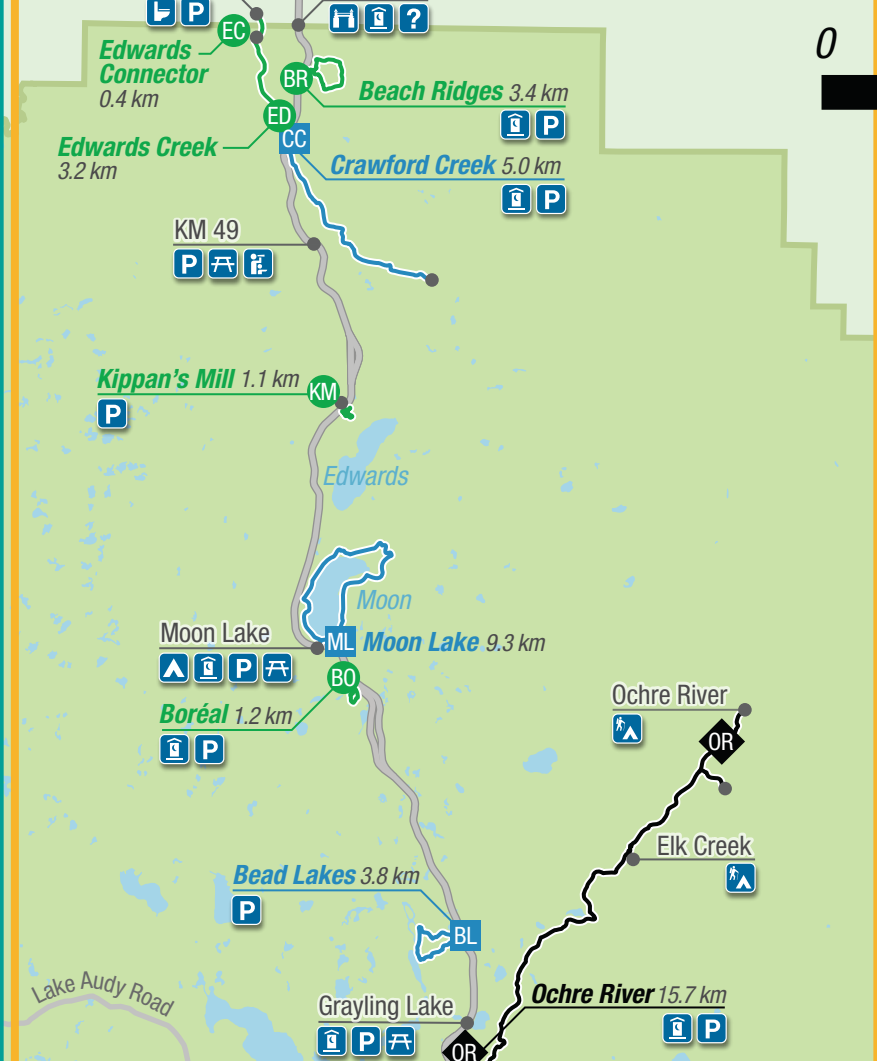
1 West



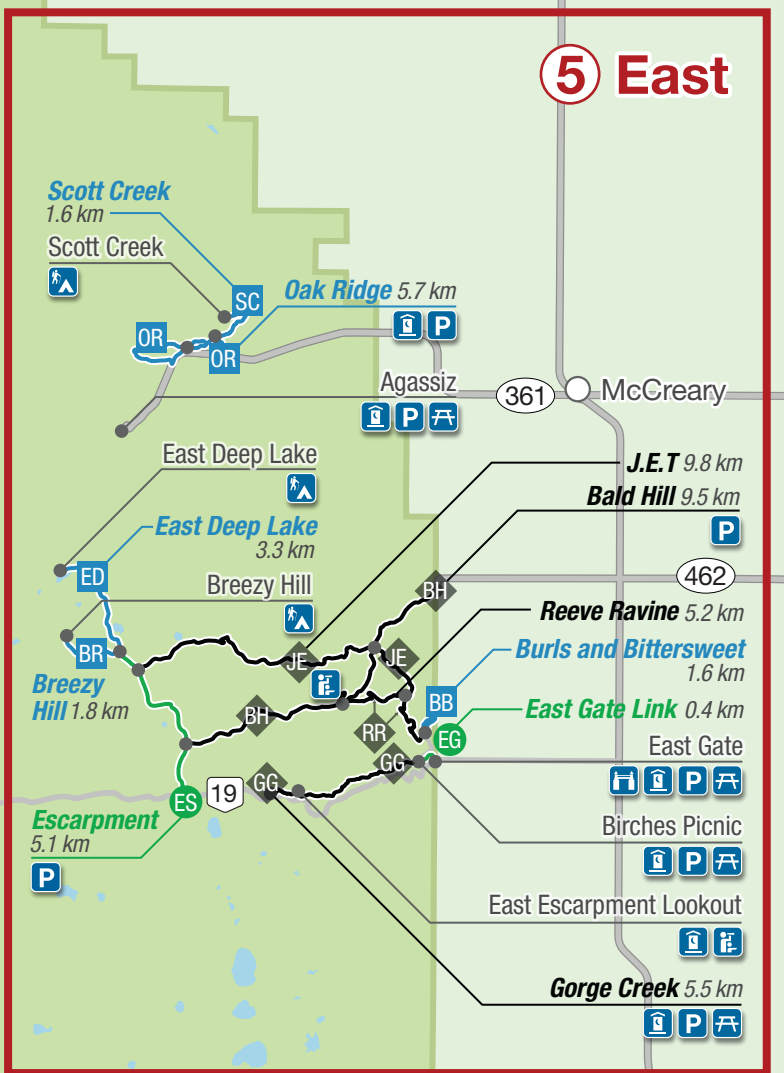
2 Lake Audy



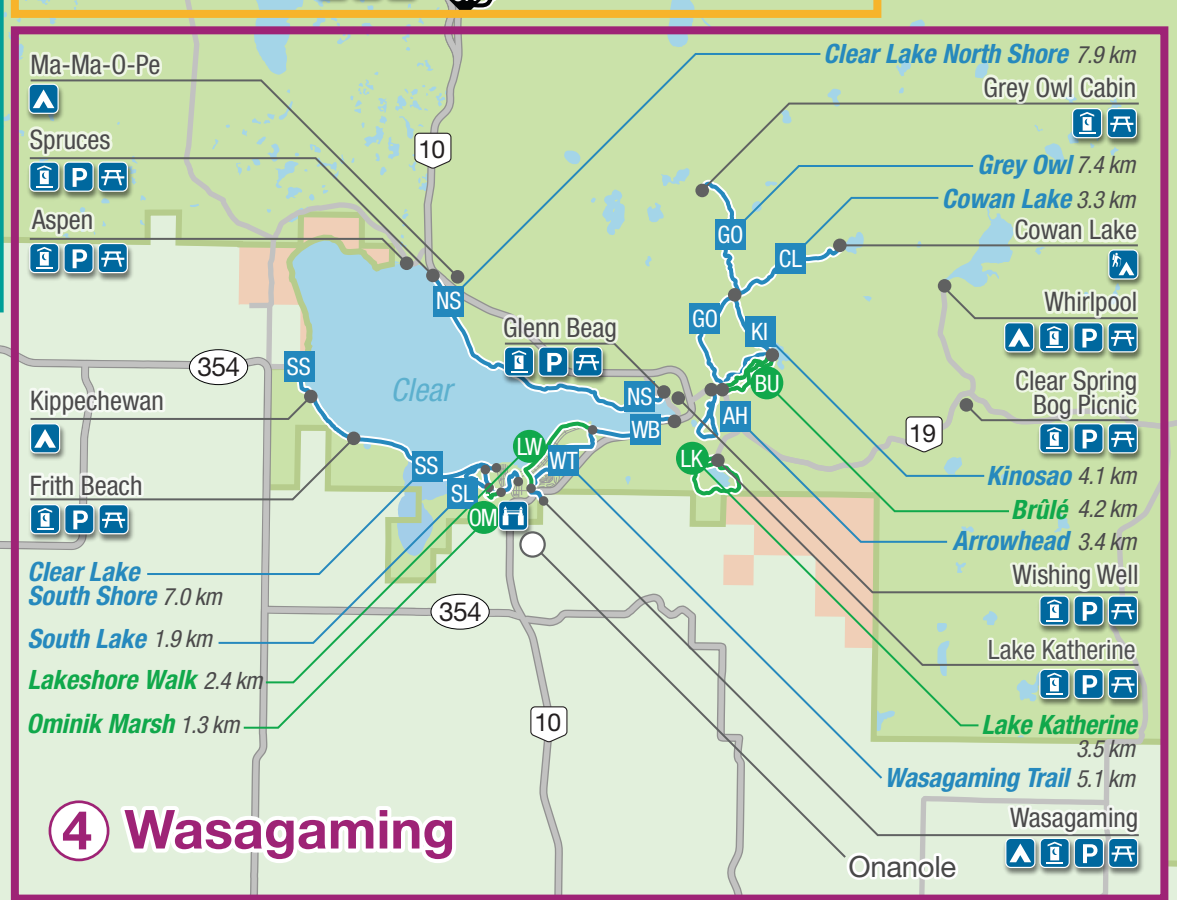
3 Parkway



5 East



4 Wasagaming



Trail Name	Distance (km)	Use	Type
BA Baldy Lake	10.5	[Hike, Mountain Bike, Horseback Riding]	One Way
CT Central West	65.0	[Hike, Mountain Bike, Horseback Riding]	One way
SL Sugarloaf	8.0	[Hike, Mountain Bike, Horseback Riding]	One way
GL Gunn Lake	1.9	[Hike, Mountain Bike, Horseback Riding]	One way
TL Tilson Lake	37.1	[Hike, Mountain Bike, Horseback Riding]	Loop
CT Central Lake Audy	65.0	[Hike, Mountain Bike, Horseback Riding]	One way
LL Long Lake	13.8	[Hike, Mountain Bike, Horseback Riding]	One way
SC Strathclair	22.1	[Hike, Mountain Bike, Horseback Riding]	One way
GV Grasshopper Valley	15.6	[Hike, Mountain Bike, Horseback Riding]	One way
LT Link	3.1	[Hike, Mountain Bike, Horseback Riding]	One way
BO Boréal	1.2	[Hike, Mountain Bike, Horseback Riding]	Loop
BR Beach Ridges	3.4	[Hike, Mountain Bike, Horseback Riding]	Loop
EC Edwards Connector	0.4	[Hike, Mountain Bike, Horseback Riding]	One way
ED Edwards Creek	3.2	[Hike, Mountain Bike, Horseback Riding]	One way
KM Kippin's Mill	1.1	[Hike, Mountain Bike, Horseback Riding]	Loop
BL Bead Lakes	3.8	[Hike, Mountain Bike, Horseback Riding]	Loop
CC Crawford Creek	5.0	[Hike, Mountain Bike, Horseback Riding]	One way
ML Moon Lake	9.3	[Hike, Mountain Bike, Horseback Riding]	Loop
OR Ochre River	15.7	[Hike, Mountain Bike, Horseback Riding]	One way
BU Brûlé	4.2	[Hike, Mountain Bike, Horseback Riding]	Loop
LK Lake Katherine	3.5	[Hike, Mountain Bike, Horseback Riding]	Loop
LW Lakeshore Walk	2.4	[Hike, Mountain Bike, Horseback Riding]	One way
OM Ominnik Marsh	1.3	[Hike, Mountain Bike, Horseback Riding]	Loop
AH Arrowhead	3.4	[Hike, Mountain Bike, Horseback Riding]	Loop
NS Clear Lake North Shore	7.9	[Hike, Mountain Bike, Horseback Riding]	One way
SS Clear Lake South Shore	7.0	[Hike, Mountain Bike, Horseback Riding]	One way
CL Cowan Lake	3.3	[Hike, Mountain Bike, Horseback Riding]	One way
GO Grey Owl	7.4	[Hike, Mountain Bike, Horseback Riding]	One way
KI Kinosaio	4.1	[Hike, Mountain Bike, Horseback Riding]	One way
SL South Lake	1.9	[Hike, Mountain Bike, Horseback Riding]	One way
WT Wasagaming Trail	5.1	[Hike, Mountain Bike, Horseback Riding]	One way
EG East Gate Link	0.4	[Hike, Mountain Bike, Horseback Riding]	One way
ES Escarpment	5.1	[Hike, Mountain Bike, Horseback Riding]	One way
BR Breezy Hill	1.8	[Hike, Mountain Bike, Horseback Riding]	One way
BB Burls and Bittersweet	1.6	[Hike, Mountain Bike, Horseback Riding]	Loop
ED East Deep Lake	3.4	[Hike, Mountain Bike, Horseback Riding]	One way
OR Oak Ridge	5.7	[Hike, Mountain Bike, Horseback Riding]	Loop
SC Scott Creek	1.6	[Hike, Mountain Bike, Horseback Riding]	One way
BH Bald Hill	9.5	[Hike, Mountain Bike, Horseback Riding]	One way
GG Gorge Creek	5.5	[Hike, Mountain Bike, Horseback Riding]	One way
JE J.E.T.	9.8	[Hike, Mountain Bike, Horseback Riding]	One way
RR Reeve Ravine	5.2	[Hike, Mountain Bike, Horseback Riding]	One way

Legend

- Backcountry camping
- Bike
- Bison enclosure
- Camping
- Flush toilet
- Hike
- Horseback riding
- Horse drawn carriage
- Information
- Lookout
- Park entrance
- Parking
- Picnic
- Privy
- Easy trail
- Medium trail
- Difficult trail
- Highway and roadway

Safety

- Check the weather, trail, and fire conditions before heading into the backcountry.
- Pack appropriate equipment, extra drinking water, and food in case you're out longer than anticipated.
- Take navigation tools and a first aid kit.
- Before your trip, please read the Bear Aware brochure.
- REMEMBER** – cell phone coverage is variable throughout the park. Do not rely on it.
- Prepare a trip plan and leave it with a responsible adult before heading out.
- For additional resources: AdventureSmart.ca



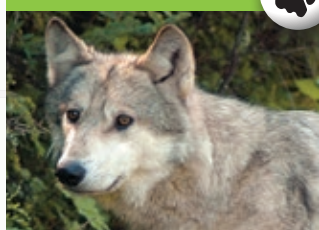
Wildlife Viewing Tips

Spot wildlife around Riding Mountain

inaturalist.org

- Dawn and dusk are the best times to view wildlife. During summer, many animals escape the midday heat by staying among the trees.
- Get wet!** Moose and waterfowl are active in rainy weather.
- Be patient!** Stop and look around, sit back and wait to see what will wander by.

Wolf



Coyote



Plains Bison



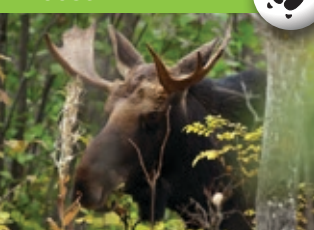
Beaver



Elk



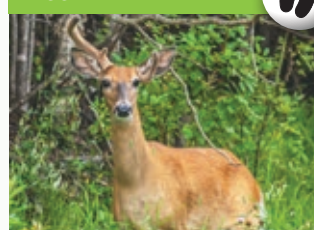
Moose



Black Bear



Deer



Stay Safe and Protect Wildlife



- Keep a safe distance from all wildlife. If an animal notices you by lifting its head, looking at you or listening to you, you are too close and should back away.
- Travelling in groups and making noise will let wildlife know you are nearby.
- Late summer and early fall is elk and moose mating season; be especially aware of wildlife along trails at this time.
- If you encounter elk, moose or bear on a trail, make yourself known by singing a song or whistling a tune. Walk slowly around them at a safe distance or return the way you came.
- Do not feed wildlife;** they have a greater rate of survival and are healthier when they feed on natural food.
- Keep your pet on a leash and under physical control at all times.
- Dogs can provoke defensive behaviour in bears and other wildlife.
- Read the Bear Aware brochures, available at any park facility.

GET YOUR DISCOVERY PASS AT THE VISITOR CENTRE

The Discovery Pass is your gateway to history, nature, and adventure. It provides unlimited admission for 12 full months at over 80 Parks Canada places.



Monitor important bulletins for area closures

