

THE PARK INSIDER

ISSUE 3
SUMMER 2018



Parks
Canada

Parcs
Canada

Canada



GREETINGS

Welcome, Bienvenue and Piintikan to Riding Mountain National Park and East Gate National Historic Site. We're happy that you came to experience this big, wonderful place. RMNP has 3000 square kilometres of protected boreal forest, aspen parkland, and Manitoba Escarpment for you to experience and enjoy.

RMNP is rich in natural diversity and the range of experiences that it offers to you is equally diverse. You can take in a magnificent view from the top of the Manitoba Escarpment, hike a boreal forest trail, and catch the scent of a warm prairie breeze - all in the same day - with time left to hang out with family and friends and enjoy the excellent services offered by the businesses in Wasagamung. Our helpful staff at the Visitor Centre will be happy to get you started.

RMNP lies within the traditional homeland of the Anishinabe people within Treaty 2 territory and at the crossroads of treaties 1 and 4. Parks Canada and the Coalition of First Nations work together to protect and present Riding Mountain National Park. We are always mindful that RMNP is here for our appreciation thanks to the stewardship of many generations that have gone before us.

This year we are happy to announce free entrance for visitors age 17 and under. We hope that makes it easier to continue the tradition of passing along the love for this place to the next generation. That and, well let's admit it, in Manitoba we love a bargain!

I'll close by asking you for a favour. While you're relaxing by Clear Lake on a warm summer day, or closing out your day by the campfire, think about how great it would be to hear an elk call on a cool fall morning, or to see a fresh wolf track while cross-country skiing, and make plans to come see us again. Thanks for coming!

Paul Tarleton, Superintendent

Ahniin, No-goom m'no gesh she-gut.

I chose to acknowledge you by asking, how are you? Today is a beautiful day to reflect our ongoing relationships with Indigenous partners from Treaties 2, 4 and 1. It is a privilege to work in the Greater Riding Mountain region which is within Treaty 2 Territory, in which lies Riding Mountain National Park. This region has been home to the Anishinabe and Indigenous groups since time immemorial and it has endured many names and references. 'The Mountains' is by far the most common definition of this place by all who reside or wander here, specifically the Anishinabe. The recognition that Noozaawinijing, "Middle of the Mountains" or Wagiiwing, "The Mountains" is home to Anishinabe is important to how we move forward and tell our stories and perspectives. I am thankful to be here to facilitate connections to the mountains, because it does impact us all, in all aspects of our lives, as well as the protection of this place for future generations.

Les Campbell, Indigenous Affairs Manager



PROTECTING PARK WATERS

Help keep zebra mussels out of RMNP! Get your mandatory inspection before launching your motorboat, canoe, kayak, paddleboard, and inflatables into the water. Inspections are free and take 15-30 minutes to complete. Permits issued in past years are not valid for 2018.

Due to the increased risk, our Aquatic Invasive Species Prevention Program is changing for the 2018 season, please visit our website for details.

2018 Mandatory Inspection Hours and Locations:

Clear Lake Boat Cove

Spring Hours - May 15 to June 15, 2018
Monday to Thursday: 9:00 a.m. to 5:00 p.m.
Friday to Sunday: 8:00 a.m. to 8:00 p.m.

Summer Hours - June 16 to September 3, 2018
7 days a week: 8:00 a.m. to 8:00 p.m.

East End Boat Launch


June 22 - September 3, 2018:
Friday - Sunday 10:30 a.m. to 6 p.m.

For more information or to book an inspection before June 15, call **(204) 848-7275**.

Visit our website:

<https://www.pc.gc.ca/en/pn-np/mb/riding/visit/moto-boat>



A beaver is swimming in clear blue water, creating concentric ripples. Above the beaver, the reflection of a tree branch is visible in the water. The scene is captured in a cool, blue-toned light.

We will

PROTECT + RESTORE

our national parks and historic sites through focussed investments, working with Indigenous Peoples, working with provinces and territories, and ensuring ecological integrity is the first priority in considering all aspects of the management of national parks.

VISITOR EXPERIENCE

FREE ENTRY!

Starting January 1, 2018, admission to Parks Canada places for **youth 17 and under** is free! There's no better time to create memories with the whole family. New this summer is a free entry day on June 23, 2018!

CAMPING

reservation.pc.gc.ca
1-877-737-3783

**New for 2018,
backcountry sites
are now reservable
online!**



EVENTS

Things are always changing in Riding Mountain National Park. Visit us online or our partner's at discoverclearlake.com to find out the latest events schedule.

Experience Winter in RMNP!

This winter Riding Mountain National Park and its partners were pleased to offer visitors a wide range of winter activities and services.

Parks Canada offered groomed cross-country ski and fat biking trails, the ever-popular skating rink and trails behind the Visitor Centre, and the skating rink on Clear Lake just off the main beach. Friends of RMNP offered fat bike rentals. The five winterized oTENTiks in the Wasagaming Campground had a total of 290 visitors throughout the winter and Cairns Cabin had 88 adventurous backcountry visitors. People of all ages enjoyed the Winter Adventure Weekend, a winter festival hosted by Friends of RMNP, Clear Lake Country, and Parks Canada from February 9-11, 2018. Interpretation programming was offered on scheduled weekends throughout the winter with a total of 209 program participants.



The main entrance gate was open every weekend from December to March with a total of 62,284 visitors throughout the winter!

RIDING MOUNTAIN SOUVENIRS

Looking to bring back a souvenir for a friend, or want your own RMNP gear? Visit the Friends of Riding Mountain National Park for your official Parks Canada merchandise.



GUIDED EXPERIENCES

pc.gc.ca/riding | @RidingNP

Check our website before July for a schedule of our Parks Canada guided experiences. Stay tuned for new programming!

BULLETIN

Travel Manitoba Award for Excellence in Tourism

Congratulations to Clear Lake Country and Riding Mountain National Park for their marketing efforts around the 2017 Winter Adventure Weekend. In 2017, the event saw its biggest attendance yet with an additional 600 cars going through that weekend. Some of the activities included maple syrup rolling, live music, guided fat biking, and a heritage hockey game on the surface of Clear Lake.

Hiring Students!

Riding Mountain National Park hires between 40-60 students every year through the Federal Student Work Experience Program (FSWEP) <https://www.canada.ca/en/public-service-commission/jobs/services/recruitment/students/federal-student-work-program.html> and online through the GC Jobs website <https://www.canada.ca/en/public-service-commission/jobs/services/gc-jobs.html>.

Check it out! Get your application process started today!

ARTISTS' RESIDENCY PROGRAM

Hear and see the trees through an artist, explore Indigenous contemporary art, kick back and listen to the prose of a writer, paddle and explore the edge of Clear Lake, or help build a mechanical contraption. These are just some of the opportunities waiting for you with year's artists.

The Riding Mountain Artists' Residency Program provides professional Manitoban artists with space and time to connect, contemplate, and create their work in the park. This program not only raises awareness and enriches the experience of the artists with the park but those who take part in their on-site programs or enjoy their works afterward.

The park is pleased to continue to work with the Manitoba Arts Council so we may continue to offer the Riding Mountain Artists' Residency Program. Its success is thanks to its passionate supporters including several volunteers, plus organizations and venues such as the Wasagaming Community Arts Centre, the Friends of the Park, and the Clear Lake Bowling Greens.

For more information go to www.artscouncil.mb.ca or drop by the Park Visitor Centre.

MESSAGE FROM THE WARDENS

Park Wardens would like to remind residents and their guests:

- Anyone using a watercraft in park waters is required to obtain and carry an Aquatic Invasive Species permit.
- Furthermore watercraft may require a decontamination prior to entering any park water body.
- The operation of drones for personal use is prohibited within Riding Mountain National Park.
- While fishing, the possession and use of barbed hooks and lead tackle weighing less than 50g is prohibited.
- 2-stroke motors and personal watercraft are not permitted to be used in the park.
- Dogs must be on leash at all times.
- All food and garbage must be put away prior to leaving a campsite or day-use-areas.
- Birdfeeders, mineral licks, and any other food left out for wildlife is not allowed in Riding Mountain.

Report any illegal activity to Park Wardens by calling Parks Canada Dispatch: 1-877-852-3100

REMINDERS

NATIONAL PARKS ARE NO-DRONE ZONES

In Canada's national parks, the landing and take-off of an unmanned air vehicle (UAV) – also known as a drone – is prohibited. In Canada, a UAV is considered aircraft. Their use is governed by Transport Canada and regulated under the National Parks Aircraft Access Regulations which prohibit a person to take-off or land an aircraft in a national park.

Anyone wishing to use a UAV in Riding Mountain National Park must submit a written proposal to rmnp.info@pc.gc.ca clearly indicating how the intended use of the UAV supports the management of the park.

If you witness the use of a UAV in Riding Mountain National Park, please report the incident to Park Wardens at 1-877-852-3100.

PROTECT YOURSELF FROM LYME DISEASE

Lyme disease is a serious illness that is present in Canada and spreading. Canadians at risk from Lyme disease include those who live, work, and/or play in close proximity to ticks that spread the disease. A number of deer ticks sent in for analysis from RMNP have come back as carrying Lyme disease and people should be vigilant in taking precautions such as:

- Wear closed-toe shoes, long-sleeved shirts and pants
- Pull socks over pant legs to prevent ticks from crawling up legs
- Wear light-coloured clothes to spot ticks easier
- Do a daily "full body" check for ticks on yourself, children and pets

DEADWOOD WEDNESDAYS

BRUSH CLEAN-UP DAYS

FireSmart Wasgaming! Help make your lot safer and more attractive by removing fuel sources like brush, branches, tree limbs, and other natural woody debris.

Dates for Summer 2018:

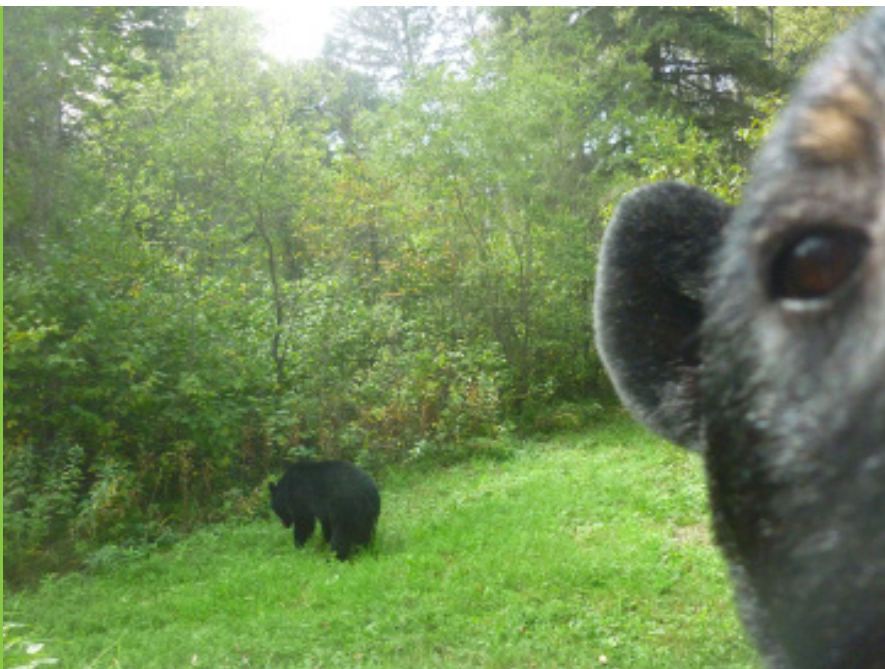
- June 27
- July 25
- August 29

Call (204) 848-7200 to book a time for the truck to stop at your lot (no later than the Monday prior to pick-up). If possible, please be available to assist with loading.

Deadwood Wednesdays are brought to you by the Wasagaming Vegetation Management Committee: Working for a safe community and a healthy forest.

BE BEAR SMART

Bears can lose their fear of humans when they are attracted to inappropriate food sources such as coolers, bird feeders, barbecues, pet food, garbage and recycling. Resource Conservation staff urge the securement of all wildlife attractants in order to deter unwanted visits. Unfortunately, when a bear keeps coming back to these easy food sources and continues to come into conflict with humans, it is the bear who loses and often pays for our mistakes with its life. Please secure all wildlife attractants on your property safely and responsibly.



DISCOVER + CONNECT

We will enable people to further Discover and Connect with our parks and heritage through innovative ideas that help share these special places with all Canadians.



FIRE PROGRAM UPDATE



Wasagaming Wildfire Risk Reduction

Our fire management team has been hard at work removing six hectares (ha) of plantation around the Parks Canada maintenance compound.

Parks Canada crews and members of Keeseekoowenin Ojibway First Nation felled trees and processed the wood, which will be used in park operations. The processing of the logs into firewood is expected to take 2-3 years and are anticipated to create over five years' worth of firewood available for the park. Crews removed 16 ha of plantation so far, and next year's project will see another 3-4 ha removed for a potential total of 20 ha removed.

During the summer, fire crews will seed the ground in this area with native grass. They will also work on "firesmartening" groups of trees that were not removed, which will involve the limbing and selective removals of trees. Great caution will be taken in order to maintain viewscapes and not interfere with the views of property owners. Crews will also burn slash piles, which are primarily made up of tops and limbs, but in some cases also include whole trees deemed unsalvageable.

This spring, many trees were removed in the Wasagaming townsite in the Clear Lake Cabin Area and near the Tennis Clubhouse to reduce hazards to persons, property, and infrastructure including the risk of fire and tree fall. An estimated 45 trees were removed and 7 trees pruned in the Clear Lake Cabin Area according to the results of a dangerous tree assessment performed by Parks Canada.

Bringing Back the Prairie

Through the Recovery and Discovery of the Aspen Parkland Project, Park Canada continues to use prescribed fire to help restore native prairie grassland and reduce fuel loads.

A prescribed fire was conducted in the Seech/Grasshopper Valley (between Lake Audy and Whitewater Lake) this spring. This area contains extensive rough fescue grasslands and aspen parkland. It will be the third time this area has been burned in the past 15 years. Previous fires have helped to prevent the loss of these rare grasslands and have improved the health and biological diversity of this unique ecosystem.

In the spring of 2019, the fire management team hopes to conduct a prescribed fire in the Lake Katherine Fire Management Unit. This fire will include many of the areas that had previously been forested with white spruce plantation.



Approximately 100 marked trees were removed around the Tennis Clubhouse to meet FireSmart standards.



Log refinishing on the Visitor Centre

PROJECTS IN THE PARK

We are investing in visitor infrastructure to ensure the quality and reliability of visitor facilities and continue to allow Canadians to connect with nature. This work will take place over the next two years.

Wasagaming Stormwater

Management: Work is scheduled to begin in spring 2018, and will increase the capacity of the townsite's stormwater system to aid in the prevention of localized flooding, and protect Clear Lake through the installation of filtration infrastructure including oil and grit separators.

Townsite Parking, Street, and

Trail Paving Project: Work has been completed on TaWaPit Drive, Buffalo Drive and Wasagaming Bike Trail, and the Boat Cove Road. Planning efforts for

Wasagaming's main parking lot, and smaller townsite parking lots are currently underway. The objectives are to fix drainage and improve accessibility.

Conservation of Heritage Building:

Great progress has been made over the last year, including log refinishing on the Visitor Centre, Bandstand masonry work, FireSmart operations around the Tennis Clubhouse, cedar shingle replacement on the Staff Residence, and trail Cabin.

This coming year, foundation replacements are planned at 154 Columbine Drive (Friends of Riding Mountain National Park), the former Doctor's Clinic and Residence, and the Whirlpool Warden's Residence located at the East Gate. Beginning this fall, deteriorated components of Grey Owl's Cabin will be replaced, the logs will be stained, and the cedar shingles replaced. The Tennis Clubhouse window panes are scheduled to be re-puttied and in some cases replaced to improve the mismatched appearance.

Visitor Centre Renewal: This premier park facility has not seen any major change for over twenty five years. Although in the early stages of planning, it is expected that major changes will be made to the visitor information hub, interpretive media, the shop and the general functionality of the building. Landscaping and accessibility will also be part of the design.

A Visitor Experience Strategy was completed this past December for the Visitor Experience Program. This strategy has informed the themes that will be presented in new interpretive media in the Visitor Centre. We have also completed an options analysis for the functional uses of the Visitor Centre and grounds and a physical plant evaluation of the building.

The next step will be to continue to work with the national Architecture and Engineering team to develop a conceptual design for the space. We will also release a request for proposal for the interpretive media design.

Highway 10 Rehabilitation and Paving Project:

Phase three of rehabilitation and paving work on Highway 10, from km 25 north to km 40, was completed in fall 2017. Culvert replacement was completed from km 40 - 54 this winter. The final phase of Highway 10 work, from km 40 north to km 60, will begin this summer with completion scheduled for early fall.

Highway 19 Rehabilitation

Project: This project will help to improve the safety and reliability of road infrastructure, improve ditches and drainage, and to offer safe vehicle access through the East Gate and eastern corridor of RMNP on Highway 19. As necessary, the road will be re-graded/widened and culverts added or replaced. Work is expected to begin in fall 2018.

East Gate: A number of upgrades around the East Gate were completed last year including landscaping work, the installation of wayfinding and interpretive signage, and the creation of a new parking lot. A new washroom will be installed this summer.

Compound Operations Centre

Redevelopment: In April 2018, staff moved into a newly-constructed Operations Building which consolidates the Park Warden facilities with Resource Conservation.



Mount Agassiz Renewal:

If you haven't been to the East Side of the park, this is a beautiful place to start! Landscaping and trail work was completed last summer and fall. A new washroom will be installed this summer.



Masonry work on the bandstand.

For up-to-date information on road closures, construction delays and infrastructure work, please visit us at <http://www.pc.gc.ca/en/pn-np/mb/riding/info/infra-prog>.

VISITOR INFORMATION

2018 VISITOR CENTRE HOURS

May 18 to June 28

Every day, from 9:30 a.m. to 5:00 p.m.

June 29 to September 2

Every day, from 9:30 a.m. to 8:00 p.m.

September 3 to October 8

Every day, from 9:30 a.m. to 5:00 p.m.

INFORMATION ABOUT

- Guided hikes and outdoor adventures
- Nature Shop
- Discovery Room
- Theatre
- Organically managed English gardens
- Passes, permits, and licenses
- Park rehabilitation projects

ADMINISTRATIVE BUILDING

Monday to Friday, all year

8:00 a.m. to 4:00 p.m.

Closed from 12:00 p.m. - 12:30 p.m.

rmnp.info@pc.gc.ca

parkscanada.gc.ca/riding

ONANOLE MUNICIPAL WASTE:

1 ½ miles west of Onanole on the north side of P.R. 354

Hours: Open daily from 8-5 p.m.

CLOSED Wednesdays.

In order to comply with environmental regulations, the municipality requires the cooperation of residents and ratepayers who utilize the Waste Disposal Site.

- Burning by the general public is strictly prohibited
- All loads must be secured when hauling to the site
- Waste must be deposited only in designated areas
- Upon arrival, all persons must report to the site attendant.

EMERGENCY : CALL 911

Police | Fire | Ambulance

ROYAL CANADIAN MOUNTED POLICE

1-204-848-2442

24 HOUR PARK EMERGENCY SERVICE

Visitor Safety, Wildlife & Park Enforcement

Toll-free 1-877-852-3100

WASAGAMING CAMPGROUND RESERVATIONS

Toll-Free 1-877-737-3783

1-877-RESERVE

reservation.parkscanada.gc.ca

HEARING IMPAIRED

TTY 1-866-787-6221



The park is accessible to persons with mobility, hearing, and visual impairments. The Administration Building, Visitor Centre, select campsites, day-use areas, and selected trails are wheelchair accessible.

We will

SUSTAIN

for generations to come the incredible value – both ecological and economic – that our parks and historic sites provide for communities.





Riding Mountain
National Park

Parc national du
Mont-Riding

2018