



Riding Mountain
National Park

THE PARK INSIDER

Issue 2

Summer 2017

Free

Campground Accommodations

Wasagaming Campground pilots 2 new
Parks Canada accommodations
Page 13

Celebrate Canada 150!

Discover all of the remarkable events
and activities for 2017
Page 6

Interpretive Programming

Take a guided tour & learn new things about
the park!
Page 8 - 9

Projects in the Park

Information on improvements
being made over the summer
Page 16 - 17



Parks
Canada

Parcs
Canada

Canada

Greetings!



Michaela Kent, Superintendent
Riding Mountain National Park

Hello, bonjour, aaniin!

It truly is an exciting year to visit Riding Mountain National Park and the East Gate National Historic Site as well as other Parks Canada sites across the country. 2017 marks the 150th anniversary of Canadian Confederation and we invite you to take advantage of free admission all year long! It's the perfect time to get curious about Canada's unique natural treasures. Come hear stories from Indigenous cultures, learn to camp, and enjoy exceptional Parks Canada programs and events across the country. The possibilities are endless.

As you explore Riding Mountain National Park, I'm confident you will not be disappointed with the abundant experiences available to you. Whether you want to explore, relax, enjoy a tasty treat, or eat a fabulous meal, you

will find what you're looking for in Riding Mountain. Wasagaming, one of the few townsites located within a national park, is home to countless shops, hotels, restaurants, cafés, and even a log movie theatre. Clear Lake, one of the park's jewels, is a great spot to launch your boat. While Wasagaming may be the first stop for most visitors, I encourage you to venture outside of town into the vast landscape of trails and lakes in Riding Mountain.

One of my favourite places to visit is Lake Audy. From this one place it is possible to visit a herd of bison, camp alongside a lake, easily catch a fish or take in a beautiful view of the night sky.

Riding Mountain sits within the traditional territory of the Anishinabe People. We are in Treaty 2 territory,

which is also at the crossroads of First Nations that belong to Treaty 1 and Treaty 4. Together, Parks Canada and the Coalition of First Nations work to protect and present Riding Mountain National Park. Don't forget to visit the Anishinabe Sharing Lodge, participate in cultural activities, or join in on the Aboriginal Day celebrations.

This year, with your free 2017 Discovery Pass, you can visit us all year as each season brings its own magic and unique opportunities for discovery. I hope you enjoy your visit and the Canada 150 celebrations in Riding Mountain National Park. This is your park and we look forward to hosting you in 2017.

Ahniin!



Les D. Campbell
Indigenous Affairs Manager
Riding Mountain National Park

Welcome back everyone!

Riding Mountain National Park resides within Treaty 2 territory and we work closely with First Nations that are from Treaty areas 2, 4 and 1. You may be already familiar with Keeseekoowenin Ojibway First Nation, Rolling River First Nation, Ebb and Flow First Nation, Gambler First Nation, Waywayseecappo First Nation, Sandy Bay Ojibway First Nation and Tootinaowaziibeeng Treaty Reserve.

Throughout the summer, each of the First Nations host their own Pow-wows. If you get the

opportunity, I would encourage visiting at least one pow-wow to help build your awareness, appreciation and understanding of the local indigenous heritage. In the meantime, please come out to National Aboriginal Day Weekend Celebrations on Saturday, June 24th, 2017 in Wasagaming. This will be an opportunity to connect with artists, performers, dancers and storytellers.

To learn more about some of the Indigenous heritage and culture in the area, I invite you to visit the Anishinabe Sharing Lodge, located at the intersection of Buffalo Drive

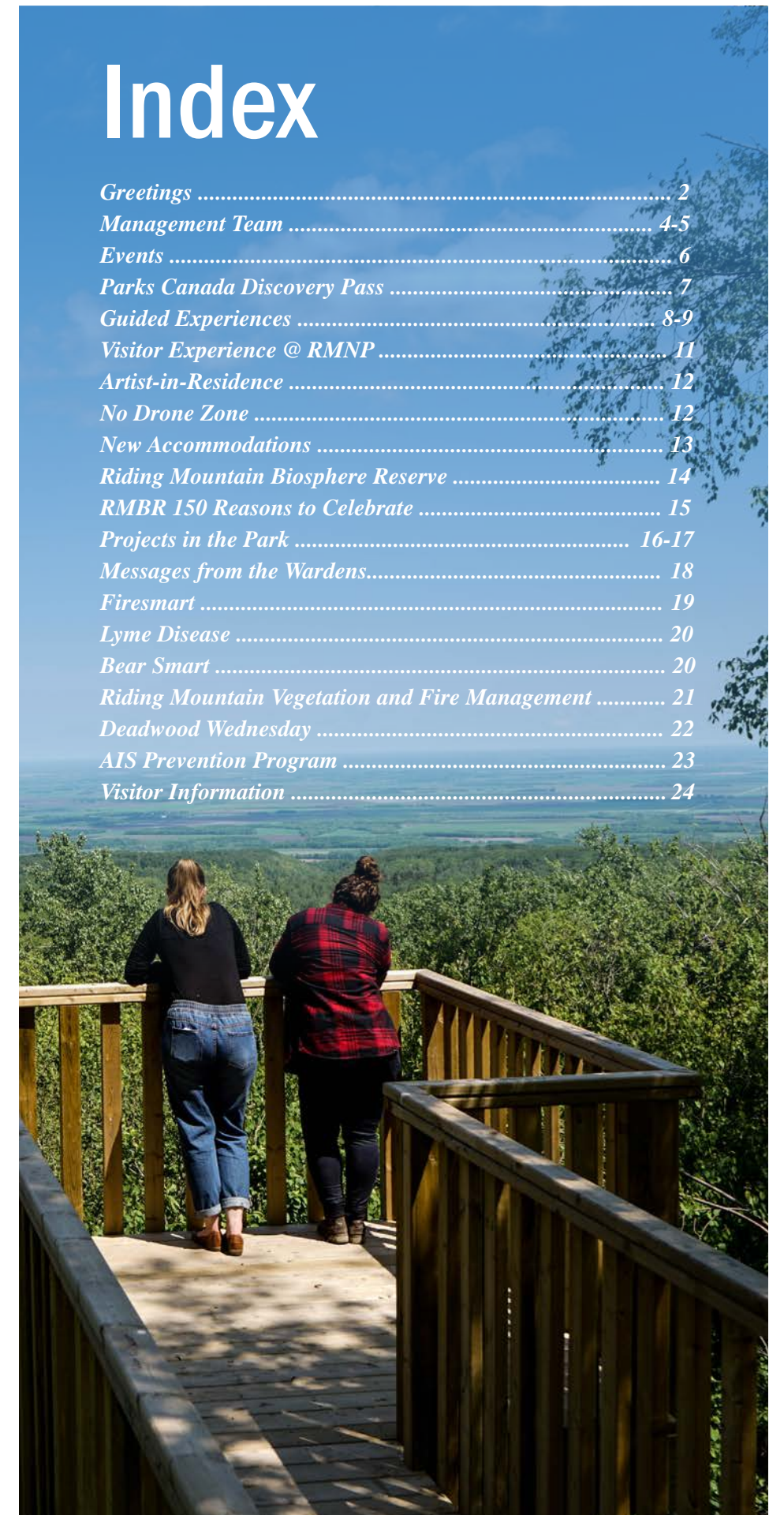
and Ta-Wa-Pit Drive. You can also find more information through a series of short films on Youtube called "Sharing our Histories: the Keeseekoowenin Ojibway First Nation", "Wagiiwing: A place of refuge", and "Partnership in Action: The Keeseekoowenin Story".

If you have any questions, ideas, comments, recognize opportunities, or wish to have a conversation regarding reconciliation, please connect with me anytime.

les.campbell@pc.gc.ca

Index

- Greetings* 2
- Management Team* 4-5
- Events* 6
- Parks Canada Discovery Pass* 7
- Guided Experiences* 8-9
- Visitor Experience @ RMNP* 11
- Artist-in-Residence* 12
- No Drone Zone* 12
- New Accommodations* 13
- Riding Mountain Biosphere Reserve* 14
- RMBR 150 Reasons to Celebrate* 15
- Projects in the Park* 16-17
- Messages from the Wardens*..... 18
- Firesmart* 19
- Lyme Disease* 20
- Bear Smart* 20
- Riding Mountain Vegetation and Fire Management* 21
- Deadwood Wednesday* 22
- AIS Prevention Program* 23
- Visitor Information* 24



RIDING MOUNTAIN NATIONAL PARK MANAGEMENT TEAM

To get in touch with any of Riding Mountain National Park's managers, please call 204-848-7275



**Superintendent
Michaela Kent**

As a member of the Parks Canada Senior Management Team, Michaela is accountable for the implementation of all aspects of Riding Mountain National Park's and Riding Mountain Park East Gate Registration Complex National Historic Site's programs.



**Human Resources Manager
Don Ostapowich**

Don provides specialized and operational advice to managers and staff in human resources areas of staffing, occupational health and safety, compensation, classification, staff relations, labour relations, continuous learning, training and development, and diversity programs.



**Assets & Highway Services Manager
Chris Hanson**

Chris manages a team of professionals and trades people in the maintenance of all assets, including buildings, highways, roadways, trails and built heritage, and the delivery and maintenance of municipal services and infrastructure.



**Program Manager
Morgan Proven**

Morgan oversees the Federal Infrastructure Investment program of work within the Riding Mountain Field Unit. The program supports infrastructure improvements to heritage, tourism, waterway and highway assets within national historic sites and national parks.



**Finance & Administration Manager
Kelly Dziver**

Kelly's responsibilities include financial, administrative, and informatics programs, systems, and services. The finance team creates all of the invoices.



**A/Visitor Experiences Manager
Calvert Martin**

Calvert manages and directs park services and facilities in support of providing quality visitor experiences within the park and the Riding Mountain region. This includes gates, information and heritage interpretation services, campground and day-use services, trails, promotions and heritage tourism services and products for visitors to the Park.



**External Relations Manager
Roger Schroeder**

Roger is responsible for connecting with off-site audiences. External Relations' role is to expand Parks Canada's reach, increase its visibility and provide opportunities for Canadians' initial connection with Parks Canada and to grow and diversify Parks Canada's base of support by providing a range of relevant opportunities for the engagement of stakeholders and partners in Parks Canada's activities. This is done through public relations and communications, outreach education, partnering and engagement and through the internet and new media applications.



**Resource Conservation Manager
Paul Tarleton**

Paul oversees the development and delivery of the ecological integrity, commemorative integrity, and visitor safety programmes for RMNP. He also manages the involvement of Parks Canada in the delivery of the Manitoba Bovine Tuberculosis Management Program, cultural resource management (including heritage buildings), and a strong wildlife, aquatics, and fire/vegetation management program.



**Indigenous Affairs Manager
Les Campbell**

Les provides assistance and advice to the Superintendent and management team in developing the Field Unit Indigenous Affairs Strategy. He coordinates all Field Unit activities in support of the objectives at the Senior Officials Forum and the Riding Mountain Forum to strengthen Indigenous relations and support and to meet our Indigenous corporate priorities, developing and implementing programs for both Indigenous and non-Indigenous staff, and First Nation communities.



**Townsite Manager
Kevin Bachewich**

Kevin manages the development and delivery of the Townsite program for Wasgaming's operations and services. Kevin is responsible for realty services and land use which includes the issuance of business licences, along with commercial, cabin and cottage leases and licences. As part of the management team, Kevin also deals with various roles relating to visitor services along with community relations and development.



**Park Warden Supervisor
Matthew Blackman**

Matthew is the supervisor for the detachment of four Park Wardens at Riding Mountain. They are sworn Peace Officers for the enforcement of the Canada National Parks Act and for preservation and maintenance of the public peace in parks. Matthew both provides advice to the management team on enforcement related issues and takes direction from them for enforcement priorities.



CANADA 150

2017

EVENTS

JUNE

- 24 National Aboriginal Day Weekend Celebrations
- 24 Moonlight Madness

JULY

- 1 Canada Day Celebrations
- 8 Clear Lake Day
- 10 – 16 Riding Mountain National Park Film Festival
- 15 Parks Day and Bio Blitz

AUGUST

- 12 – 13 Chamber Days parade and activities
- 18 – 26 Tamarack Golf Tournament
- 19 Riding Mountain Triathlon
- 20 Riding Mountain Kids of Steel
- 26 Boo in the Park
- TBD Canada 150 Free Concert

SEPTEMBER

- 1 – 4 Dark Sky Week
- 5 – 10 Pride Week
- 16 Learn-to Camp Backcountry
- 16 – 17 Sonics and Sojourns
- 17 Riding Mountain Half Marathon
- 23 Clear Lake Uncorked

OCTOBER

- 21 Friends Fright Night
- 27 – 29 Creepy Hollow Hauntings

NOVEMBER

- 18 – 19 Photos with Santa

DECEMBER

- TBD Winter Bird Count

For more information about events in Riding Mountain National Park visit pc.gc.ca/riding or our community partners Clear Lake Country, Riding Mountain National Park at discoverclearlake.com.

Join the Celebration

with Parks Canada!

2017 marks the 150th anniversary of Canadian Confederation and we invite you to celebrate with Parks Canada! Take advantage of free admission to national parks, national historic sites and national marine conservation areas for the entire year.

Get curious about Canada's unique natural treasures, hear stories about Indigenous cultures, learn to camp and paddle, and celebrate the centennial of Canada's national historic sites with us. Find adventure, fun for the whole family or a short break from the everyday in more than 200 special places across the country.

Parks Canada

Discovery Pass

The Discovery Pass provides unlimited opportunities to enjoy over 200 National Parks, National Historic Sites, and National Marine Conservation Areas across Canada. Parks Canada is happy to offer free admission for all visitors to all places operated by Parks Canada, in 2017, to celebrate the 150th anniversary of Canadian Confederation.

For more information regarding the Parks Canada Discovery Pass, please visit pc.gc.ca/eng/ar-sr/lpac-ppri/ced-ndp.aspx.



SUMMER GUIDED EXPERIENCES

July 2 – August 25, 2017

	SUN	MON	TUES	WED	THURS	FRI	SAT
9AM			Paddle Clear Lake 2.5 hours 🏠 \$			Paddle Clear Lake 2.5 hours 🏠 \$	
10AM	Family Fat Bike Rally 3 hours 🏠 \$	Cultural Demonstration Smudging Circle 1.5 hours 🌿		Delights of the English Gardens with tea & scones 1.5 hours 🏠 \$	Cultural Demonstration Indigenous Beading 2 hours Come & go 🌿		Learn-to Fish 1.5 hours 🏠
		Junior Naturalist 2 hours 🏠 🌿 \$	Junior Naturalist 2 hours 🏠 🌿 \$	Junior Naturalist 2 hours 🏠 🌿 \$	Junior Naturalist 2 hours 🏠 🌿 \$	Junior Naturalist 2 hours 🏠 🌿 \$	
			Explore Gorge Creek 3.5 hours 🏠 \$ 🚗				
1PM	Under the Discovery Dome Learn-to Camp 3 hours Come & go 🏠	Under the Discovery Dome Bison 3 hours Come & go 🏠	Under the Discovery Dome Bats 3 hours Come & go 🏠	Under the Discovery Dome Aquatic Aliens! 3 hours Come & go 🏠	Under the Discovery Dome Wolves 3 hours Come & go 🏠	Under the Discovery Dome Animal Tracks 3 hours Come & go 🏠	Under the Discovery Dome Learn-to Camp 3 hours Come & go 🏠
1:30PM		Junior Naturalist 2 hours 🏠 🌿 \$	Junior Naturalist 2 hours 🏠 🌿 \$	Junior Naturalist 2 hours 🏠 🌿 \$	Junior Naturalist 2 hours 🏠 🌿 \$	Junior Naturalist 2 hours 🏠 🌿 \$	
2PM						Cultural Workshop 2 hours 🌿 \$	
4PM		L'I Critter Camp 1 hour 🏠 🌿 \$	L'I Critter Camp 1 hour 🏠 🌿 \$	L'I Critter Camp 1 hour 🏠 🌿 \$	L'I Critter Camp 1 hour 🏠 🌿 \$	L'I Critter Camp 1 hour 🏠 🌿 \$	
7PM			Young Explorer 2 hours 🏠 🌿 \$		Young Explorer 2 hours 🏠 🌿 \$		
7:30PM	Home on the Range Tips in Bison Country 2.5 hours 🏠 \$ 🚗	Paddle Clear Lake 2.5 hours 🏠 \$	Call of the Wild RMNP Parkway Caravan 2 hours 🏠 \$ 🚗	Home on the Range Tips in Bison Country 2.5 hours 🏠 \$ 🚗	Paddle Clear Lake 2.5 hours 🏠 \$	Call of the Wild RMNP Parkway Caravan 2 hours 🏠 \$ 🚗	Bikes n' Beers Bike Rally for Grow-ups 2 hours 18+ 🏠 \$
8PM	Fun 'round the Fire Bear Aware 1 hour 🏠	Fun 'round the Fire Songs of Riding Mountain 1 hour 🏠	Fun 'round the Fire Bats, Man! 1 hour 🏠	Fun 'round the Fire Alien Invasion 1 hour 🏠	Fun 'round the Fire Culture Time! 1 hour 🏠	Fun 'round the Fire Wilderness Wisdom 1 hour 🏠	Fun 'round the Fire Songs of Riding Mountain 1 hour 🏠



HIGHLIGHTS

Family Fatbike Rally / Bikes n' Beers

Fun-seeking families can pedal the town during Sunday's rally, while more adventurous adults can cruise the local trails Saturday evening until happy hour.

Paddle Clear Lake

Explore the aquatic intricacies of the jewel of Riding Mountain's crown: Clear Lake. All while paddling a kayak!

Home on the Range: Tips in Bison Country

The local Anishinabe culture and the bison are tightly interwoven. Participate in a cultural caravan and learn more about this sacred relationship, as well as current scientific study surrounding this symbol of the prairies.

FALL GUIDED EXPERIENCES

August 26 – October 9: Call of the Wild Car Caravans

From the comfort of your car, golden aspen leaves serve as a beautiful backdrop for the bugling elk and rutting moose in September and October, the mating season. Keep your eyes open for other large mammals, including bison and deer.

September 2 – 3: Heritage Camping Experience

Wake-up on the shores of Lake Audy to the west and the open bison range to the east during this overnight experience in a tipi encampment. Explore and use cultural crafts that would once have furnished this dwelling. Enjoy traditional fare as you immerse yourself in the culture of the First Peoples of the region.

September 1 – 9: Dark Sky Week

Join us for a week of Dancing with the Stars! Stargazing treks and special guests are some of the quirks and quarks of this galactic week.

Learn-to-*BACKCOUNTRY*-Camp!

Join park guides for an overnight experience in the backcountry of RMNP. Backcountry food, s'mores and a campfire are just some of the fun activities involved. Mountain Equipment Co-op gear will be showcased to help you plan future outings.

LEGEND

- 🏠 Meet at the Visitor Centre
- 🏠 Meet at Friends of RMNP Learning Centre
- 🌿 Anishinabe Sharing Lodge
- 🌿 Wasagaming Campground
- 🌿 Friends of RMNP Program
- 🚗 Vehicle Required
- 💰 Fees Apply
- 🆓 Free Admission

FOR KIDS

Children aged 6 – 11

Become a Parks Canada Xplorer

Pick up your NEW 2017 *Xplorers Booklet* at the Visitor Centre. Children will receive an *Xplorers booklet* filled with fun activities that will guide your discovery of each unique place you visit. After discovery, the kids will receive a certificate and an official collectable souvenir recognizing them as Parks Canada Xplorers!

FOLLOW US!



@RidingNP
#RidingNP
PC.GC.CA/RIDING



NEW! Parks Canada is now on Instagram!

@parks.canada
#ParksCanada



@clearlakecountry
#discoverclearlake
discoverclearlake.com

VISITOR CENTRE HOURS

Open seven days a week

May 19 – June 29
9:30 a.m. – 5:00 p.m.

June 30 – September 3
9:30 a.m. – 8:00 p.m.

September 4 – October 9
9:30 a.m. – 5:00 p.m.

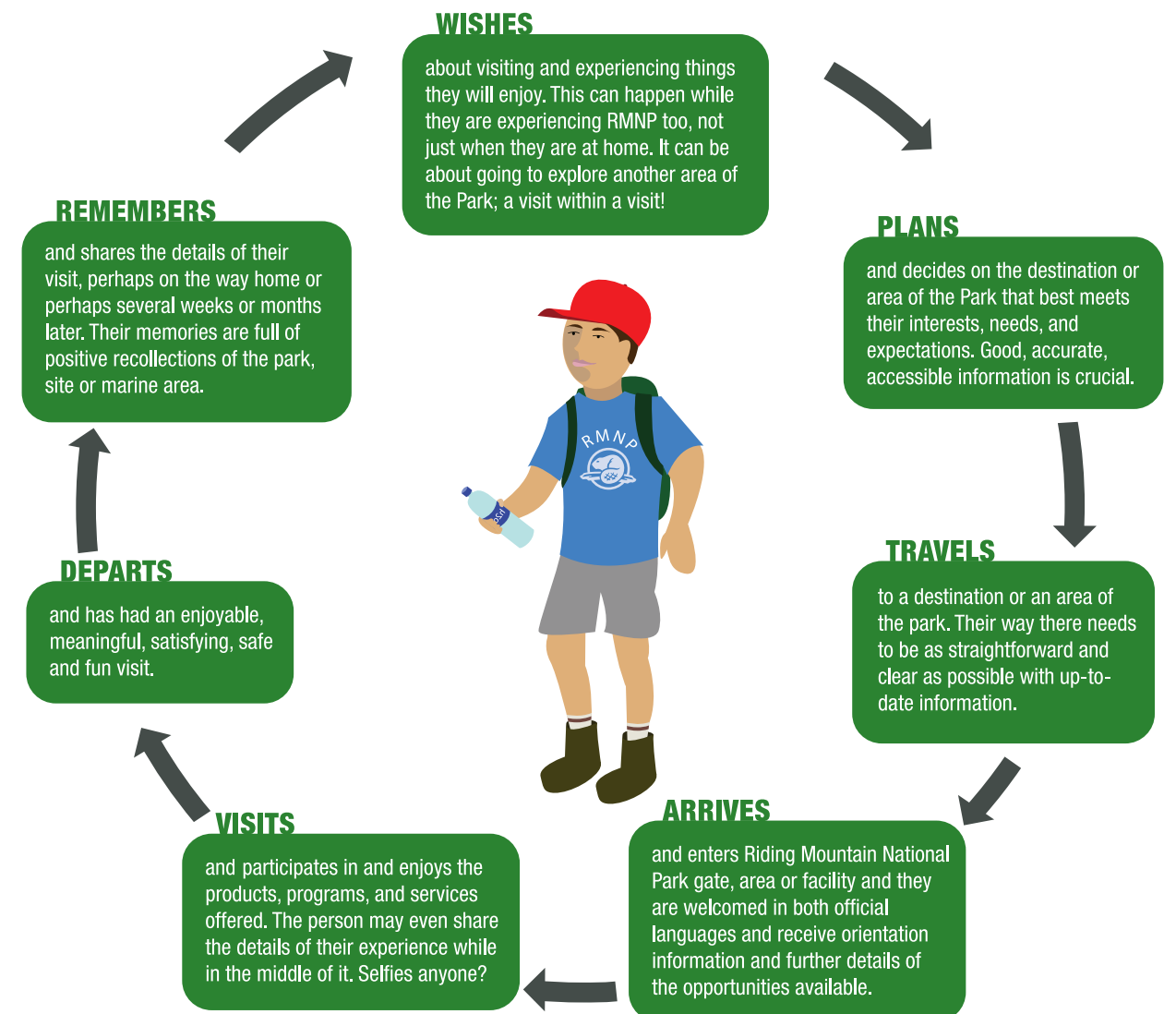
THE VISITOR EXPERIENCE @ RMNP

In 2017 Canadians and visitors from across the world celebrate Canada 150 and the benefits we all receive by having Riding Mountain National Park located in Treaty 2 territory. We want to make sure that people connect with this truly amazing place.

This year, you may be asked about where the best place to watch the sun go to sleep over a glassy lake? Where can a visitor huddle up with loved ones and enjoy the majestic dark skies of the boreal forest? or When is the best time to visit the bison; steaming cup of tea in hand, as they awake from their bedroom of wildflowers at Lake Audy?

So, take a moment to learn about our visitors, focus on their interests, needs, and values. We need to respond with products and services that are authentic, unique and exceed expectation.

Here are 7 simple phases of a visitor's experience that remind us to take the perspective of a visitor. This will help us to identify what they are seeking and find opportunities for them to enjoy in Riding Mountain. Let's make sure they come back again!



Connect with Some of Manitoba's Best Artists!



Enjoy a live music performance, hike and explore the park with an artist, experience an interactive artistic presentation, or just sit back and appreciate the words of a poet.

The Riding Mountain Artists' Residency Program provides professional Manitoban artists with the chance to focus on their work and be inspired by the park. In return, visitors gain a unique opportunity to experience the park by interacting with the artists.

For 12 years, the Manitoba Arts Council and the park have worked together to offer this program. Its success is thanks to a number of passionate supporters, including several volunteers, plus organizations and venues such as the Wasagaming Community Arts Centre, Friends of Riding Mountain National Park and the Clear Lake Bowling Greens.

For more information go to www.artscouncil.mb.ca or drop by the Park Visitor Centre.

Use of Unmanned Air Vehicle (UAV) / Drone

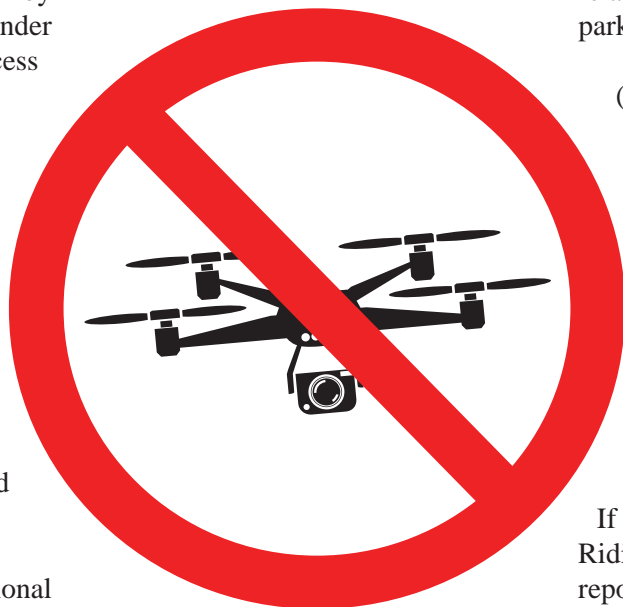
In Canada's national parks, the landing and take-off of an unmanned air vehicle (UAV) – also known as a drone – is prohibited.

National Parks are No Drone Zones

In Canada, a UAV is considered aircraft. Their use is governed by Transport Canada and regulated under the National Parks Aircraft Access Regulations which prohibit a person to take-off or land an aircraft in a national park.

Anyone wishing to use a UAV in Riding Mountain National Park must submit a written proposal to rmnp.info@pc.gc.ca clearly indicating how the intended use of the UAV supports the management of the park. If approved, a Restricted Activity Permit will be issued.

As per Section 3 (1) of the National Parks Aircraft Access Regulations, the



Superintendent can issue a Restricted Activity Permit for a UAV for the purpose of:

- (a) Natural or cultural resource management and protection directly related to the administration of the park;
- (b) Any other management or control function directly related to the administration of the park;
- (c) Public safety; or
- (d) Law enforcement.

A Special Flight Operations Certificate (SFOC) is also required from Transport Canada.

If you witness the use of a UAV in Riding Mountain National Park, please report the incident to Park Wardens at 1-877-852-3100.

NEW ACCOMMODATIONS IN THE WASAGAMING CAMPGROUND



Micro-Cube and Double-Tent

The Micro-Cube offers a unique experience with a panoramic window that makes up one side of the cube, and includes a double bed, two chairs, and a table.



The Double-Tent consists of a smaller interior tent inside a larger exterior tent. The interior tent contains a bed, a small table, and chairs. The exterior tent is equipped with comfortable chairs and a table to relax. The exterior tent is bug-proof, allowing you to relax outside without the nuisance of bugs.

Visitors need to bring their own cooking equipment and bedding. Cooking is prohibited inside both accommodations. Plan ahead to be equipped for colder days as the Micro-Cube and Double-Tent are not heated. Reservations can be made by calling 204-848-7275 only.

RIDING MOUNTAIN BIOSPHERE RESERVE



WHAT IS A BIOSPHERE RESERVE?

Designated by UNESCO (the United Nations Educational, Scientific, and Cultural Organization) a biosphere reserve demonstrates a “balanced relationship between humans and the biosphere.”

The Riding Mountain Biosphere Reserve exists to foster and encourage a sustainable economy based regional economy, with high biodiversity, landscape, and social values, with the national park as a key component. This is fulfilled through a cooperative spirit with others.

Life is an amazing series of connections. Between people, between people and nature, between knowledge and action, across time and place. If these connections break, we put our collective quality of life at risk. If we keep them strong, we build a future that inspires us.

The Riding Mountain UNESCO Biosphere Reserve is a place where people share a way of living with nature that builds a future we are proud of by championing life, empowering people and modelling solutions together.

Community events and activities:

- At the Farm Gate:
Farmers' markets and listings of local producers and artisans that reside within the Biosphere Reserve
- Promoting the use of native species plants in landscaping
- Community garden program
- Citizen Science Species at Risk Bat Monitoring program
- Adult education workshops and school programs to raise awareness of the conservation of biodiversity
- NEW! Canada 150 selfie contest!

For more information, email rnbr@mts.net or visit rnbr.ca.



FOLLOW US ON TWITTER



FIND US ON FACEBOOK



#RMBR150



150 Reasons to visit Riding Mountain Biosphere Reserve

150 Reasons is a year-long celebration highlighting the people, places, cultural locations and festivals of the Riding Mountain Biosphere Reserve. Each time you visit one of the highlighted “Reasons” take a “Selfie” and submit it to the Riding Mountain Biosphere Reserve to be entered into our monthly prize draws. At the end of 2017, one lucky participant will win our “150 Reasons” grand prize!

How many Riding Mountain Biosphere Reserve attractions can you visit in 2017?

How to enter:

Take your Selfie at one of this month’s “Reasons” and send it to us!

Send a Selfie through Riding Mountain Biosphere Reserve’s Facebook page or email it to rnbr@mts.net.

Have fun exploring the Riding Mountain Biosphere Reserve!

More information: <http://150.rnbr.ca/>

PROJECTS IN THE PARK



Investments in visitor infrastructure – such as trails, visitor centres and campgrounds, as well as highways, parkways and bridges – will ensure the quality and reliability of visitor facilities and continue to allow Canadians to connect with nature. Due to Canada 150 and the large number of visitors expected this year, much of the work on projects is planned for the shoulder and winter seasons and will take place over the next three years.

Wasagaming Stormwater Management – Work is scheduled to begin in September of 2017, and will increase the capacity of the system to prevent flooding, and protect Clear Lake through the installation of filtration infrastructure including oil and grit separators, dry ponds and vegetated swales.

Townsite Parking, Street, and Trail Paving project – Work has been completed on Ta-Wa-Pit Drive, Buffalo Drive and Wasagaming Bike Trail. Plans for Boat Cove Road, Wasagaming's main parking lot, and smaller townsite parking lots are currently underway. The objectives are to fix drainage and improve accessibility.

Conservation of Heritage Buildings – This project will oversee the restoration of at least a dozen iconic heritage buildings, including the East Gate Registration Complex National Historic Site, the Bandstand on the shores of Clear Lake, and Grey Owl's Cabin. Work will focus on stabilizing such things as foundations, logs, stone masonry, roofs and other key building exterior components. Some signs of this project are already visible. The stonework on the bandstand was refurbished in May by Parks Canada Heritage Building specialists. The exterior logs of the Visitor Centre have been stripped, sanded, stained and coated with UV protectant to refresh the look of the original logs and protect them from deterioration.

Visitor Centre Renewal – This premier park facility has not seen any major change for over twenty five years. Although in the early stages of planning, it is expected that major changes will be made to the visitor information hub, interpretive media, the shop and the general functionality of the building. Landscaping and accessibility will also be part of the design.

Highway 10 Rehabilitation and Paving Project – Phase two of rehabilitation and paving work on

Highway 10, from the South Gate entrance to km 26.7 (3.4 km north of Grayling Lake) resumed on May 1st, 2017. This work began last year but could not be fully completed due to weather conditions. This phase is currently going along quickly with concrete work and paving. The repair work near km 48 on Highway 10 has been completed. A third phase of Highway 10 work, from km 25 north to km 40, will be implemented in July and August.

Compound Operations Centre Redevelopment – This project involves the decommissioning and/or rehabilitation of aging cold storage facilities within the Maintenance Compound, as well as the reconstruction of the Operations building to consolidate the Warden facilities with Resource Conservation.

Completed Projects:

Wasagaming Campground Revitalization – This was completed last summer and included the installation of 20 additional oTENTiks, an increased number of full serviced sites and upgraded water & electrical services (200), upgrades and improvements to the washrooms, site improvements with picnic tables, fire pits and landscaping, and paving of all roads.

Mount Agassiz Asset Decommissioning – The kitchen shelter created in the old Buffalo Bar (the last remnant of the downhill ski resort) was winterized and a custom-made wood stove was installed for visitor use. More landscaping and trail work will take place this spring and summer. Many visitors enjoyed the area during the winter season, and if you haven't been to the East Side, this is a beautiful place to start. A new washroom will be installed this summer.

For up-to-date information on road closure, construction delays and infrastructure work, please visit us at <http://www.pc.gc.ca/en/pn-np/mb/riding/info/infra-prog>.



MESSAGES FROM THE PARK WARDENS

Park Wardens would like to remind residents and their guests:

The operation of drones for personal use is prohibited within Riding Mountain National Park

Anyone using a watercraft on park waters is required to obtain and carry an Aquatic Invasive Species permit

While fishing, the possession and use of barbed hooks and lead tackle weighing less than 50g is prohibited

2-stroke motors and personal watercraft are not permitted to be used in the park

Dogs must be on leash at all times

Birdfeeders, mineral licks and any other food left out for wildlife is not allowed in Riding Mountain

Report any illegal activity to Park Wardens by calling Parks Canada Dispatch: 1(877)852-3100

Trip Planning

Play it safe — and enjoy your experience!

Remember the 3 T's — Trip Planning, Training, and Taking the Essentials — to make sure you stay safe and enjoy your visit.

Trip Planning – Plan your route. Know the terrain conditions. Check the weather. Always fill out a trip plan and leave it with a family member or friend. Trip plans are available online www.adventuresmart.ca or at the Visitor Centre.

Training – Obtain the knowledge and skills you need before heading out. Know and stay within your limits.

Taking the Essentials – Carry the essentials and know how to use them. Add other equipment specific to your activity, the season, and location, such as:

- Flashlight • Fire making kit • Signalling device (ie. whistle) • Extra food and water • Extra clothing • Navigational/ Communication devices • First aid kit • Emergency blanket/shelter • Pocket knife • Sun protection •

For more information, visit www.AdventureSmart.ca.



WANTS COMMUNITY CHAMPIONS!

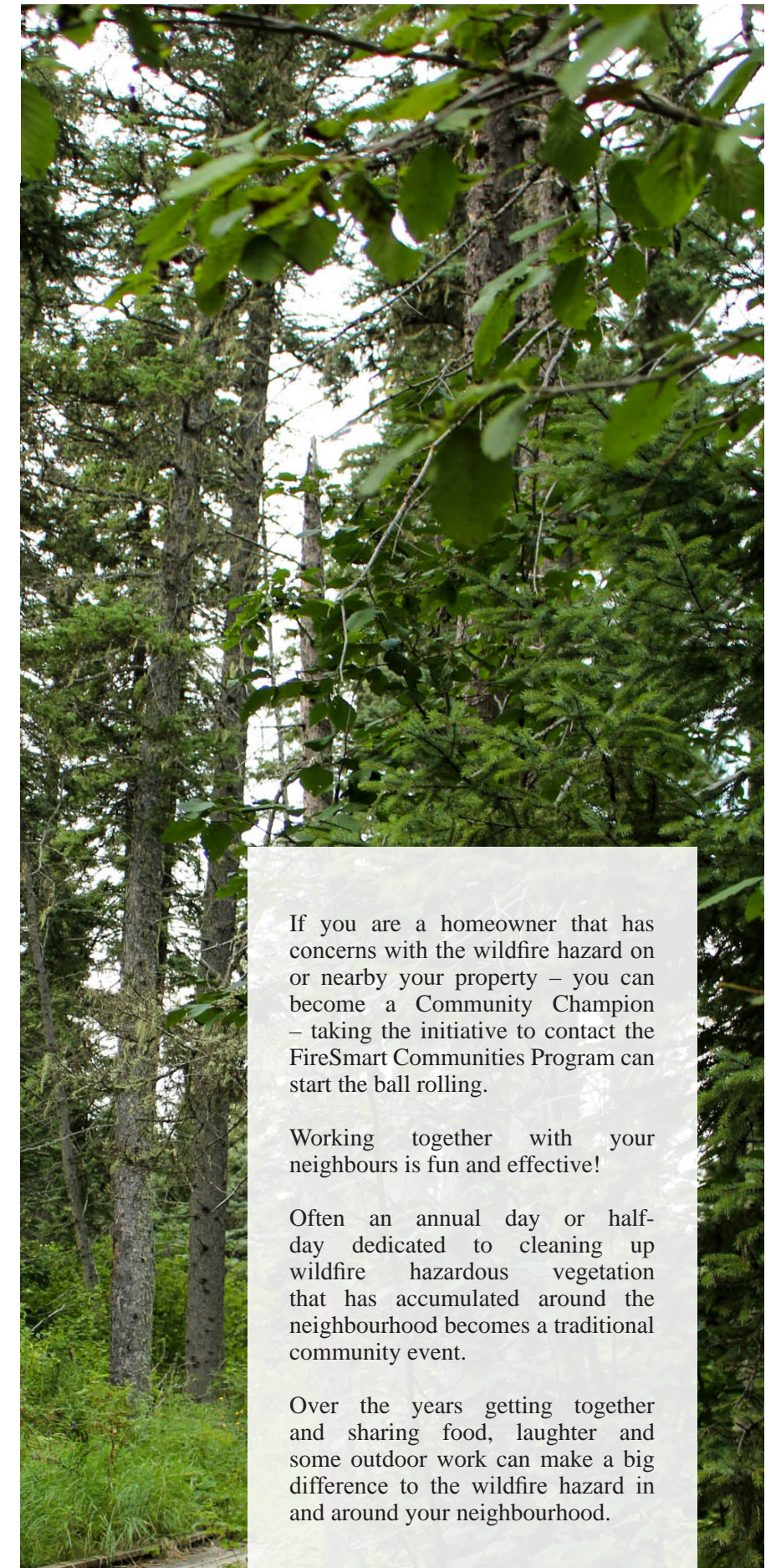
The FireSmart Communities Program is designed to encourage self-organized groups of residents to take the lead in implementing solutions for wildfire safety on their own properties.

The program provides people living in wildfire prone areas with the knowledge and organizational means to significantly reduce their neighbourhood's vulnerability to wildfire. They achieve this by planning and working together – with the support of a local wildfire professional.

Remember, if you're concerned about the wildfire hazard in your area - there's a good chance your neighbours feel the same way. The FireSmart Communities Program is designed to assist you and your neighbours to develop an action plan to reduce your wildfire hazard simply and effectively.

If this sounds like something your neighbourhood might be interested in, contact FireSmart Canada or your local FireSmart Representative today. They will arrange to meet with you (the Community Champion) and your neighbours to discuss your concerns and explain what the FireSmart Communities Program can do for your neighbourhood. There's no obligation and the program is funded by a variety of fire prevention agencies.

Visit our website at: www.firesmartcanada.ca or contact your local representative Reade Tereck at 204-848-7240 or reade.tereck@pc.gc.ca



If you are a homeowner that has concerns with the wildfire hazard on or nearby your property – you can become a Community Champion – taking the initiative to contact the FireSmart Communities Program can start the ball rolling.

Working together with your neighbours is fun and effective!

Often an annual day or half-day dedicated to cleaning up wildfire hazardous vegetation that has accumulated around the neighbourhood becomes a traditional community event.

Over the years getting together and sharing food, laughter and some outdoor work can make a big difference to the wildfire hazard in and around your neighbourhood.

PROTECTING YOURSELF FROM LYME DISEASE



Lyme disease is a serious illness that is present in Canada and spreading. Canadians at risk from Lyme disease include those who live, work and/or play in close proximity to ticks that spread the disease. A number of deer ticks sent in for analysis from RMNP have come back as carrying Lyme disease and people should be vigilant in taking precautions such as:

Wear closed-toe shoes, long-sleeved shirts and pants

Pull socks over pant legs to prevent ticks from crawling up legs

Wear light-coloured clothes to spot ticks easier

Do a daily "full body" check for ticks on yourself, children and pets

For more information on Lyme disease, blacklegged ticks, and how to protect yourself from tick bites, please visit:

Government of Manitoba: <http://www.gov.mb.ca/health/lyme/index.html>

Public Health Agency of Canada: <http://www.phac-aspc.gc.ca/phn-asp/2015/lyme-eng.php>,

Find the pamphlet—Don't let a SMALL PEST turn into a BIG PROBLEM—available at the Visitor Centre

Bear Smart

Bears can lose their fear of humans when they are attracted to inappropriate food sources such as coolers, bird feeders, barbecues, pet food, garbage and recycling. Resource conservation staff urge the securement of all wildlife attractants in order to deter unwanted visits. Unfortunately, when a bear keeps coming back to these easy food sources and continues to come into conflict with humans, it is the bear who loses and often pays for our mistakes with its life. Please secure all wildlife attractants on your property safely and responsibly.

For more bear safety information, please visit:
www.parkscanada.gc.ca/riding.



RIDING MOUNTAIN VEGETATION & FIRE MANAGEMENT



Over the past three years, Parks Canada has renewed its focus on removing trees that were planted on native grassland over 50 years ago. The program will help protect homes, cottages and businesses from wildfire and restore native grasslands. Most of this work was completed in mid-February 2017. Continued work will focus on a 10-hectare area. Summer crews will be working on burning waste and non-salvageable materials from the salvage operation.

Removing old plantations is a long-term project dating back to 1990 with the goal of reducing wildfire risk to Wasagaming and restoring native grasslands. The white spruce plantations were originally planted on native grasslands between 1940 and 1960. The trees were planted closely together and are considered to be highly flammable, increasing the threat to property and firefighting crews in the event of a wildfire. By restoring this area to grassland, wildfires can be more safely controlled. Parks Canada staff and Indigenous and private contractors have been working on this project the last two winters.

Parks Canada is committed to restoring prairie ecosystems such as this one to an ecologically healthy state, expanding a rare and unique ecosystem in western Canada. A healthy rough fescue grassland containing a wide variety of native grasses, flowers, and shrubs is the long-term goal. Removing old plantations and conducting prescribed burns are some of the ways that Parks Canada is restoring the rough fescue grassland ecosystem in Riding Mountain National Park.

Visitors are asked to use caution if travelling in this area and watch crews working. During some periods of this summer and fall there could be smoke and flame visible along portions of Highway 10.

DEADWOOD WEDNESDAYS



Brush Clean-up Days

FireSmart Wasagaming

Working for a safe community and a healthy forest

Dates for Summer 2017

June 28/17

July 26/17

August 30/17

Call 204-848-7200 to book a time for the truck to stop at your lot (no later than the Monday prior to pickup). If possible, please be available to assist with loading.

MAKE YOUR LOT SAFER AND MORE ATTRACTIVE BY REMOVING FUEL SOURCES LIKE:

- Brush
- Branches
- Tree limbs
- Other natural woody debris

Deadwood Wednesdays are brought to you by the Wasagaming Vegetation Management Committee.

Aquatic Invasive Species Prevention Program

Parks Canada staff are working closely with visitors to keep aquatic invasive species (AIS) like zebra mussels out of park waters through watercraft inspections and strict decontamination procedures.

ALL motorized and non-motorized watercraft are required to undergo a free inspection and will be issued

a permit by Parks Canada watercraft inspectors. Permits and decals issued for 2016 are NOT valid for 2017.

Please visit the link below for more info regarding the Aquatic Invasive Species Prevention Program in RMNP:
<http://www.pc.gc.ca/en/pn-np/mb/riding/info/aqua/ppae-aispp>

Summer 2017 Watercraft Inspection Schedule:

Boat Cove inspection station hours

By appointment:

Mon - Fri: 9am - 4:30pm

Until June 24:

Friday: 12pm - 8pm

Saturday: 8am - 8pm

Sunday: 8am - 8pm

The Clear Lake Boat Cove Launch inspection station will be open **8am - 8pm** seven days a week starting Saturday June 24. This will continue through July and August.

*please email ais.inspection@pc.gc.ca or call the AIS team cell phone at 204-396-4579 to book an appointment.



VISITOR INFORMATION

2017 VISITOR CENTRE HOURS

May 19 to June 29

Every day, from 9:30 a.m. to 5:00 p.m.

June 30 to September 3

Every day, from 9:30 a.m. to 8:00 p.m.

September 4 to October 9

Every day, from 9:30 a.m. to 5:00 p.m.

INFORMATION ABOUT

- Guided hikes and outdoor adventures
- Nature Shop
- Discovery Room
- Theatre
- Organically managed English gardens
- Passes, permits, and licenses
- Park rehabilitation projects

ADMINISTRATIVE BUILDING

Monday to Friday, all year

8:00 a.m. to 4:00 p.m.

Closed from 12:00 p.m. - 12:30 p.m.

EMERGENCY

Police | Fire | Ambulance
911

ROYAL CANADIAN MOUNTED POLICE (RCMP)
1-204-848-2442

24 HOUR PARK EMERGENCY SERVICE

Visitor Safety, Wildlife & Park Enforcement
Toll-free 1-877-852-3100

WASAGAMING CAMPGROUND RESERVATIONS

Toll-Free 1-877-737-3783

1-877-RESERVE

reservation.parkscanada.gc.ca

HEARING IMPAIRED

TTY 1-866-787-6221

rmnp.info@pc.gc.ca

parkscanada.gc.ca/riding

The park is accessible to persons with mobility, hearing, and visual impairments. The Administration Building, Visitor Centre, select campsites, day-use areas, and selected trails are wheelchair accessible.

ONANOLE MUNICIPAL WASTE

Location

1 ½ miles west of Onanole on the north side of P.R. 354

Hours

Open daily from 8 a.m. to 5 p.m. and CLOSED every Wednesday.

In order to comply with environmental regulations, the municipality requires the cooperation of residents and ratepayers who utilize the Waste Disposal Site.

- Burning by the general public is strictly prohibited
- All loads must be secured when hauling to the site
- Waste must be deposited only in designated areas
- Upon arrival, all persons must report to the site attendant.