

Park. The building also contains a lecture hall, where meetings and entertainments are held, and a community room for the use of the public. In the rear of the Museum Building is a small garden in English style containing a fountain and a rustic summer-house. The Government buildings are surrounded by a landscaped park with walks and flower beds, and pergolas constructed of native oak.

Bathing.—The main beach fronting the townsite of Wasagaming extends for nearly a mile and a half. Two large bath-houses are available for public use and the breakwater extending into Clear Lake provides a sheltered area for inexperienced swimmers. Beaches are also located at other points on Clear Lake.

Boating.—Boats and canoes may be hired at reasonable rates at the breakwater. Motor launches starting from this point make trips up and down Clear Lake at regular intervals. Sail boating is also popular.

Tennis.—Eight fine tennis courts, situated near the public camp-ground, are available for use at nominal charges. A large pavilion with dressing-rooms is at the disposal of players. The charge for each playing period of 30 minutes is 10 cents per person for singles and 5 cents per person for doubles. Individual playing tickets are also issued as follows: week, \$1.50; month, \$3.00; season, \$6.00. An attendant is in charge of the courts.

Golf.—The Government golf course is situated at the eastern end of Clear Lake about three miles by motor road from Wasagaming. The course has 18 holes and is 6,060 yards long. It is well situated, and picturesque views of Clear Lake are available from many of the fairways. A clubhouse overlooks the lake and the 9th green. A professional is in attendance, and golfing supplies, meals and light refreshments may be obtained during the season.

Rates for the use of the golf course follow:—

One round (18 holes continuous).....	\$ 1.00
One day.....	1.50
One week.....	6.00
One month.....	20.00
Season, Lady (restricted).....	20.00
Season, Lady (full privileges).....	30.00
Season, Gentleman.....	30.00

Family rates (seasonal only) —

*Man and Wife.....	40.00
*Dependants (16 years and over).....	15.00
*Dependants (12 years to 16 years).....	10.00

*Subject to restricted hours of play.

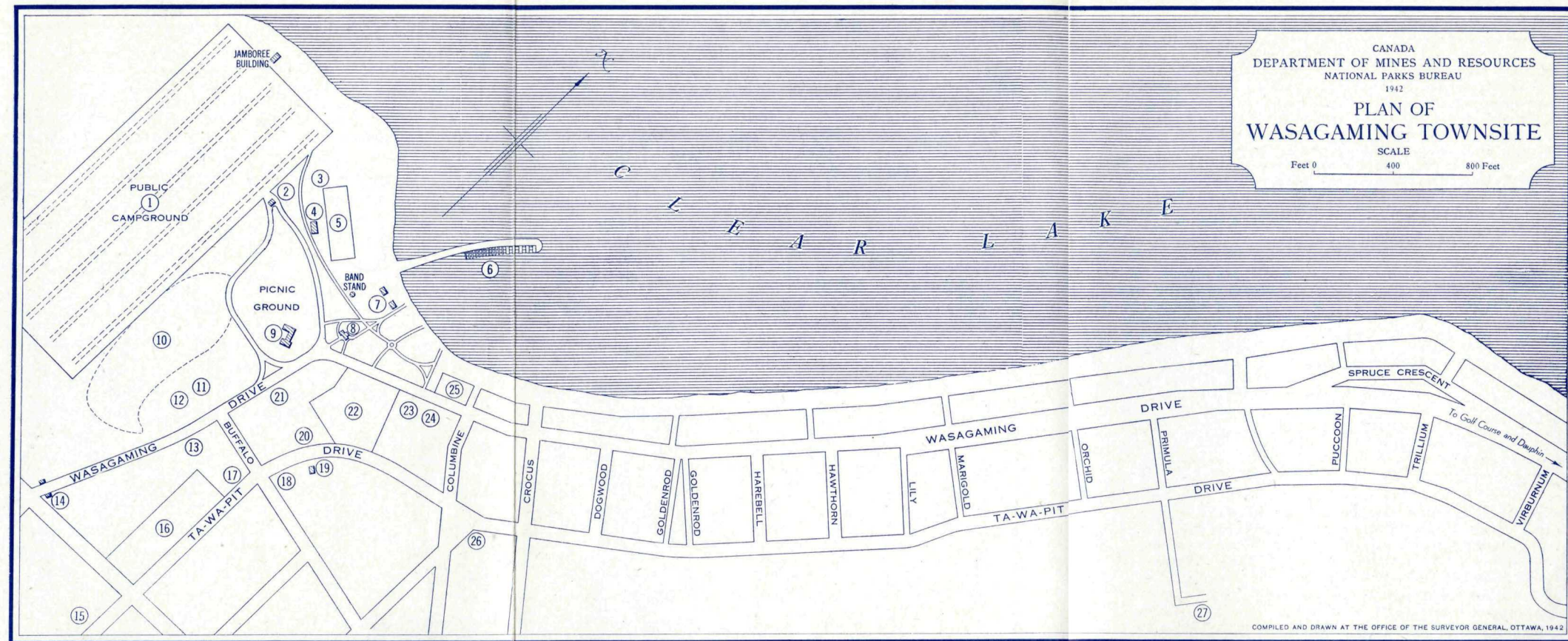
Hiking and Riding.—A number of trails in the vicinity of Wasagaming provide fine outings for visitors who desire to hike or ride. Saddle horses may be hired from an outfitter at Wasagaming at reasonable rates. Following are a few of the most popular rides, with the distances one way:—Lake Katherine, 6 miles; Ministik Lake, 5 miles; North Shore of Clear Lake, 5 miles; Bubbling Spring, 3 miles.

Fishing.—Fishing at present is confined principally to Clear Lake, where pike, whitefish and perch are found. The lake has been stocked recently with rainbow trout. Some of the smaller lakes in the park, including Moon and Audy, also contain fish.

MOTOR DRIVES IN THE PARK

The park highways provide several fine motor drives for visitors. Among the most popular points of interest which may be reached from Wasagaming, are:—

Bubbling Spring.—3 miles from Wasagaming at the east end of Clear Lake near the residence of the Park Superintendent. Clear, cold water flows from the spring at the rate of 3,900 gallons per hour. The surroundings are landscaped. The spring is reached over Highway No. 10 and the Glen Beag Road.



Golf Course, Loop Drive.—4 miles from Wasagaming. Park Road No. 10 is followed to the eastern end of Clear Lake, a left turn is taken along the shore line to Glen Beag Road, through the Glen to Park Road No. 10, and return via golf links to Wasagaming.

Fish Retaining Pools.—6 miles from Administration Building at Wasagaming. The pools are situated on the north shore of Clear Lake and may be reached by Highway No. 10 and the North Shore Road. They are operated to supply fish fry and fingerlings for stocking the park waters.

Audy Lake Animal Enclosure.—25 miles from Administration Building, Wasagaming, via Highway No. 10 and Lake Audy Road. In the enclosure may be seen buffalo, elk, moose, white-tailed and mule deer. Beaver may also be seen west of the enclosure on Whitewater River. In the vicinity will be found a picnic ground with shelter and camp-stove.

Moon Lake.—23 miles from Administration Building, Wasagaming, on Highway No. 10. Picnic grounds, equipped with shelters, stoves and tables are located here. There is good fishing, a sandy beach and bathing facilities.

Lake Katherine.—6 miles east from Administration Building, Wasagaming, on Park Road No. 5A. The picnic grounds are equipped with shelters, stoves and tables.

Dauphin Lookout.—29 miles from Administration Building on Park Road No. 10 to northern escarpment of Riding Mountain. Remarkable views of the plains, Dauphin Lake, and Duck Mountain may be obtained from this point.

Norgate Lookout. Situated approximately 19 miles from Administration Building on Park Road No. 5A. This lookout is located 2,000 feet above sea level, overlooking Lakes Manitoba and Winnipeg.

FAUNA AND FLORA

Animals and Birds.—Many species of wild animal life are found in the park, including a herd of wild elk, which is one of the largest in Canada. Moose, white-tailed and mule deer, bear and beaver are also numerous. A visit to the wild animal enclosure near Lake Audy, which contains a small exhibition herd of buffalo, will provide an excellent opportunity to see these animals as well as moose, deer, and elk, in their native haunts.

Bird life is numerous in the park. Migratory water-fowl which find rest and shelter on the lakes include wild ducks, Canada geese, swans, cormorants and pelicans. Interesting birds of charming song and lovely plumage noticed during mid-summer include such species as the song sparrow, red-winged blackbird, both eastern and mountain bluebird, Baltimore oriole, catbird, western meadowlark, bluejay, kingfisher, pileated woodpecker, evening grosbeak, and ruby-throated hummingbird.

No hunting is permitted within park boundaries, and all firearms must be sealed on entry. Guns will be sealed at the office of the Park Superintendent or by the park wardens without charge. Wild birds, their nests and eggs, as well as wild animals, are protected.

Trees and Flowers.—The forests of the park include such species as white spruce, jack pine, aspen, white birch, black spruce, tamarack, balsam fir, bur oak, green ash, elm, and Manitoba maple, as well as mountain ash, wild plum, and service berry. Shrubs include hazel, highbush cranberry, saskatoon, dogwood, choke cherry, and mountain maple.

Wild flowers, which grow in great profusion, include wild rose, twin flower, marsh marigold, orange lily, pasque flower (anemone), violet, bunch berry, Indian paint brush, brown-eyed susan, aster, and golden rod.

FIRE PREVENTION

Visitors are requested to co-operate with park officers in the prevention of fires. Matches, cigarette butts, pipe ashes, and other smoking materials should be completely extinguished before being thrown away, and then dropped only on bare soil.

Camp-fires may be kindled only at places provided for the purpose, and must be completely extinguished before leaving. Persons using the park trails unaccompanied by a licensed guide should acquaint themselves with the parks regulations and secure particulars concerning suitable campsites and other related information.

Any fire observed by a park visitor should be extinguished if possible, or the nearest park officer notified at once. A fire in a national park may cause damage which cannot be replaced in a hundred years. Forest fires are among the greatest enemies of the parks.

INDEX TO BUILDINGS AND ATTRACTIONS IN WASAGAMING

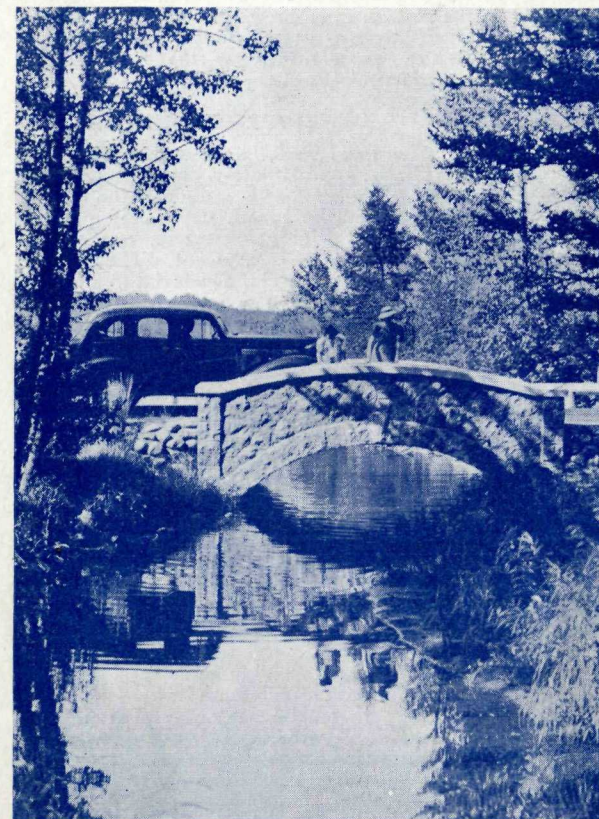
GOVERNMENT BUILDINGS AND ATTRACTIONS—	
Administration Building.....	8
Bath-houses.....	7
Breakwater and Dock.....	6
Camp-ground.....	1
Camp-ground Office.....	2
Children's Playground.....	3
Entrance to Park (Southern).....	14
Fire Department.....	19
Government Tourist Information Bureau, Museum Building (Museum, Community Rooms, and Lecture Hall).....	9
Parking Area.....	10
Power House.....	27
R.C.M.P. Barracks.....	18
Staff Quarters.....	26
Tennis Courts.....	5
Tennis Pavilion.....	4
PUBLIC SERVICES AND AMUSEMENTS—	
Dance Hall.....	11
Motion Picture Theatre.....	12
Post Office.....	23
Riding School.....	15
Telephone and Telegraph Office (McMorran Rental Agency).....	20
HOTELS AND BUNGALOW CAMPS—	
Chalet Hotel.....	25
Idylwyld Bungalows.....	22
Lake Lodge.....	13
Pioneer Hotel.....	24
Ta-wa-pit Lodge.....	17
Wasagaming Bungalows.....	16
Wasagaming Lodge.....	21

Additional information, literature, and maps concerning the National Parks of Canada may be obtained from the Government Information Bureau at Wasagaming, Manitoba, or from the National Parks Bureau, Department of Mines and Resources, Ottawa, Canada.

Printed by EDMOND CLOUTIER, King's Printer
Ottawa, Canada, 1942

Reqn. 10158

RIDING MOUNTAIN NATIONAL PARK MANITOBA



On the Glen Beag Road

GENERAL INFORMATION AND MAP

DEPARTMENT OF MINES AND RESOURCES
LANDS, PARKS AND FORESTS BRANCH
NATIONAL PARKS BUREAU
OTTAWA, CANADA

RIDING MOUNTAIN NATIONAL PARK MANITOBA

PURPOSE OF NATIONAL PARKS

The National Parks of Canada are areas of outstanding beauty and interest which have been dedicated to the people of Canada for their benefit, education and enjoyment, to be maintained and made use of so as to leave them unimpaired for the pleasure of future generations. The co-operation of visitors is requested in the observance of park regulations so that the parks may continue to serve as unspoiled natural playgrounds and provide perpetual opportunities for the enjoyment of outdoor life and recreation.

LOCATION AND GENERAL DESCRIPTION

Riding Mountain National Park is situated in the mid-western part of Manitoba, approximately 125 miles north of the International Boundary between Canada and the United States. The park occupies the broad, undulating plateau that forms the summit of Riding Mountain, one of the highest points of the Manitoba escarpment. The heavily timbered uplands of Riding Mountain, which rise to a height of 2,200 feet above sea level, form a decided yet pleasing contrast to the surrounding fertile plains. The park was established in 1929, and contains an area of 1,148 square miles.

Riding Mountain in itself is pre-glacial in origin and some of the natural features of the park owe their existence to the Ice Age. Many of the small lakes nestle between the ridges and in the hollows made by the ancient glaciers, and glacial boulders are found in different sections of the park. Clear Lake, the largest and most beautiful body of water in the park, is located just north of the park's southern boundary. The lake is nine miles long and more than two miles across at the widest point. The greatest depth of the lake is 150 feet. Other lakes in the park include Audy, Katherine, Ministik, Moon, and Edwards.

The park is a forested area, embracing most of the softwood and hardwood species native to the region. It is also a natural home for wild life, and such big game species as elk, deer, bear, and moose find sanctuary within its borders. The easy accessibility of the park, and its many natural attractions have made it the summer playground of thousands who find in it remarkable opportunities for outdoor life and recreation. The season for visitors extends approximately from May 1 to October 31.

HOW TO REACH THE PARK

From Canada.—Riding Mountain National Park is linked by hard-surfaced or gravelled all-weather motor roads with the main provincial highways of Manitoba. There are three entrances to the park, namely, through the southern, eastern, and northern gateways, which are located at the park boundaries. The southern approach is through the town of Minnedosa on Highway No. 4, then north by Highway No. 10 to the southern gateway of the park, located half a mile from Wasagaming, the administrative headquarters. Approach to the eastern gateway is made via Highway No. 5 from Neepawa to Norgate and then westward over Highway No. 5A to Wasagaming. The northern gateway is situated about eight miles south of the town of Dauphin on a road from Wasagaming which connects with Provincial Highway No. 5. The approaches to the park by both the northern and eastern routes bring the visitor up over the escarpment of Riding Mountain, and at several points magnificent views of the prairies may be obtained.

Motor buses, which connect with the main provincial bus line services of Manitoba and Saskatchewan, leave the towns of Minnedosa and Dauphin twice daily for the park. A bus service from Brandon, Manitoba, also enters the park daily. Information concerning bus-line connections may be secured from the Clark Transportation Company, Winnipeg and Dauphin, and from the MacArthur Transportation Company at Brandon.

Following are the distances from Canadian points to Wasagaming, the park headquarters:—

Winnipeg, via Minnedosa, 173 miles; Winnipeg, via Norgate, 181 miles; Dauphin, 42 miles; Brandon, 66 miles; Yorkton, 153 miles; Saskatoon, 398 miles; Prince Albert National Park (Waskesiu) 517 miles; International Peace Garden, 129 miles; Emerson (on International Boundary), 242 miles.

From United States

Riding Mountain National Park is easily accessible to motor visitors from the United States. Six main provincial highways lead from the International Boundary, four of which converge upon Brandon and two on Winnipeg. One of the most popular routes is via the Canal-to-Canada Highway through Dunseith, North Dakota; the International Peace Garden, and Boissevain, Brandon, and Minnedosa, Manitoba.

RAIL CONNECTIONS

Rail connections with the park may be made from Neepawa, Norgate, Dauphin, and Erickson on the Canadian National Railways, Neepawa and Minnedosa on the Canadian Pacific Railway system, and from the city of Brandon, served by both railway systems.

REGISTRATION AND MOTOR LICENCES

All motorists entering the park must register and secure a transient motor licence as provided in the regulations governing the use of motor roads in the national parks. Licences for motor vehicles not used for commercial purposes are issued on the following basis:—

- (1) Single trip licence, good for a period not exceeding 30 days, provided automobile is not taken out of the park during such period: Automobile, 25c.; auto with trailer attached, 50c.
- (2) Licence good for the entire season, which also will be honoured in Prince Albert, Elk Island, Waterton Lakes, and Point Pelee National Parks: Automobile, \$1; auto with trailer attached, \$2.
- (3) Special licence good for entire season, which also will be honoured in all national parks where a transient motor licence is required: Automobile, \$2; auto with trailer attached, \$3.

Special licences may be obtained for motor vehicles used for commercial purposes.

Visiting motorists are requested to pay strict attention to highway traffic signs, drive carefully at all times, and keep within a speed limit that is reasonable and proper for the location of the road and the volume of traffic thereon.

ADMINISTRATION OF THE PARK

A resident superintendent supervises the administration of Riding Mountain National Park. The Administration Building, situated in the park area near the centre of the townsite of Wasagaming, contains the office of the Park Superintendent, and the Government Information Bureau, which is open daily. Information concerning accommodation, travel, recreation, and points of interest, as well as literature and maps, may be obtained on request. The park regulations are enforced by the park warden service assisted by the Royal Canadian Mounted Police. Land in the park is not sold, but lots may be leased in the townsite for business or residence purposes.

PARK TOWNSITE

The townsite of Wasagaming, situated on the southern shore of Clear Lake, is a summer resort only. Within the townsite are business and residential sections. Nearly 200 summer cottages have been erected to date. The business subdivision comprises several blocks and contains seven general stores, ten restaurants, two butcher shops, a drug store, pasteurized milk depot, beauty parlours, three garages and service stations, a motion picture theatre and dance pavilion, and three photographic and souvenir stores. The Post Office is located on Wasagaming Drive, and the telephone and telegraph offices on Ta-wa-pit Drive. The name "Wasagaming" is an Indian translation of "clear water".

ACCOMMODATION

Accommodation	Rooms	Rates per day
The Chalet (Hotel)	67 rooms	Single \$2.50 up (Eur.) Double 3.50 up (Eur.)
Pioneer Hotel (Baker's)	12 rooms	Single 1.25 (Eur.) Single 2.75 (Amer.)
Doner's Ta-wa-pit Lodge	52 rooms	Single 1.75 (Eur.) Double 2.50 (Eur.)
Wasagaming Lodge	26 rooms	Single 1.50 up (Eur.) Double 2.25 up (Eur.)
Lake Lodge	26 rooms	Single 1.75 (Eur.) Double 2.50 (Eur.)
Idylwyld Bungalows	50 cabins	Per Cabin, \$2.00 up per day, (Eur. plan). (Cabins accommodate 4 to 6 persons; tea room, store, and wash-rooms with showers in connection.)
Wasagaming Bungalows	13 cabins	Per Cabin, \$4.50 per day, (Eur. plan). (Cabins, equipped with showers, accommodate 4 to 6 persons.)

Accommodation may also be secured in rooming and boarding houses. A number of summer cottages are available for rental during the season. Information concerning rooms and cottages may be obtained at the Park Information Bureau or from the McMorrin Agency at Wasagaming.

Government Camp-ground.—The public camp-ground at Wasagaming is situated west of the business subdivision in a beautiful grove facing Clear Lake. It is divided into blocks each containing a kitchen shelter equipped with camp stoves, tables and running water, and other conveniences. Refrigerator buildings with individual lockers for storage of perishable supplies are available for public use at a cost of 50 cents for each period of two weeks or fraction thereof. The camp-ground is lighted by electricity. A community building in the camp-ground is available for the use of campers and other park visitors. Camping supplies may be purchased from the stores at Wasagaming.

The fees for camping permits are \$1 for ordinary tents for each period of two weeks or fraction thereof. Camping permits for cabin tents or automobile trailers are issued at the rate of \$2 for each period of two weeks or fraction thereof. Permits may be obtained from the camp attendant whose office is situated at the entrance to the camp-ground.

Picnic grounds, with limited facilities for camping, are also situated at Moon Lake on Park Road No. 10 and at Lake Katherine on Park Road No. 5A.

RECREATIONAL FACILITIES

Wasagaming is the recreational centre of the park where numerous forms of outdoor sports may be enjoyed. Areas suitable for baseball and softball, and a children's playground are located near the public camp-ground. A motion picture theatre and a dance pavilion are operated during the season.

Entertainments, including community singing, skits and recitals, are also held periodically in the jamboree hut or community building in the camp-ground during the summer season.

The Government Museum Building, situated southwest of the Administration Building, contains a fine collection of mounted specimens of wild life native to Riding Mountain

