



Riding Mountain  
National Park

# VISITOR GUIDE

2015



Parks  
Canada

Parcs  
Canada

Canada



# Contents

- 3 Welcome
- 4 2015 Special Events
- 5 Visitor Centre
- 6 Wasagaming
- 8 Day Itineraries
- 10 Summer and Fall Guided Experiences
- 12 Camping
- 14 First Nations
- 15 Lake Audy Fescue Grassland
- 16 Trails
- 18 RMNP Map
- 20 Wasagaming Map
- 21 Clear Lake Map
- 22 Experiencing Riding Mountain
- 23 Doing Your Part
- 24 Park History
- 26 Biosphere Reserve  
Meet the Artist
- 27 Shops at Clear Lake  
Wasagaming Chamber of Commerce
- 30 Wildlife
- 32 Friends of RMNP  
2015 Riding Mountain Photo Contest
- 34 Visitor Safety
- 35 Contact Information/  
Further Reading & Resources



**Follow us!**

[facebook.com/RidingNP](https://www.facebook.com/RidingNP)

[Twitter.com/RidingNP](https://twitter.com/RidingNP)

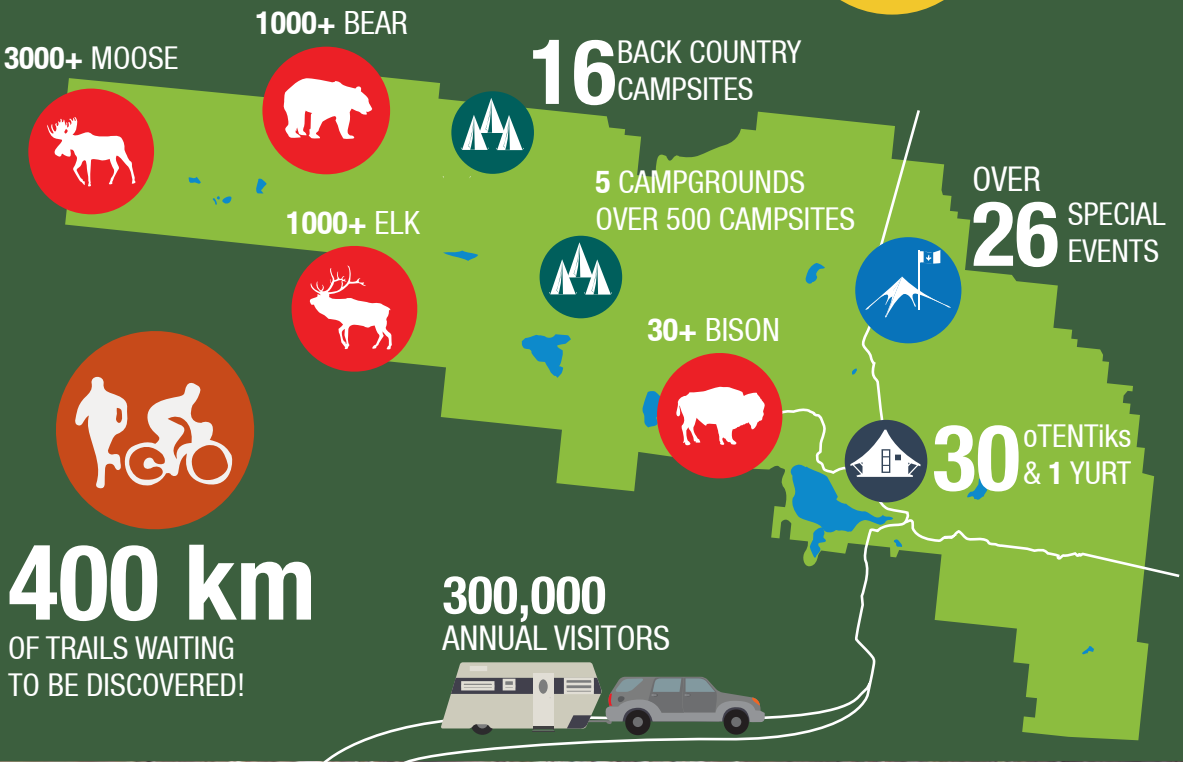


# WELCOME TO RIDING MOUNTAIN NATIONAL PARK!

Welcome to over 3000 km of prairie parkland. Where the boreal forest, the aspen parkland and the fescue prairie greet visitors of all ages and abilities. Our welcoming community and pristine wilderness will help you to reconnect with the best of Manitoba and Canada, and offer you a vast array of opportunities for relaxation, laughter, discovery and fun. Riding Mountain National Park is filled with memories waiting to be discovered.

**60** DIFFERENT TYPES OF MAMMALS

**239** SPECIES OF BIRDS





# 2015 SPECIAL EVENTS



## May

15 - 18

May Long / Victoria Day  
Summer Kickoff

24

Walk for MS - Lakeshore Walk

## June

12 - 14

Grey Owl Golf Tournament

20

Learn to Camp

21

National Aboriginal Day

## July

1

Flea Market Saturdays & Sundays  
(Sportsmans Park)

Canada Day & Citizenship

Ceremony

Clear Lake Celebration Day

Riding Mountain Film Festival

Parks Day

11

16-19

18



## August

8-9

Flea Market Saturdays & Sundays  
(Sportsmans Park)

14-22

Wasagaming Chamber Days  
(Parade & Kiddie Parade)

15-16

Tamarack Golf Tournament  
Riding Mountain Triathlon  
& Kids of Steel

22

Boo in the Park  
& Outdoor Concert

## September

12-13

RONA MS Bike Tour

18-20

Sonics & Sojourns

## October

24th

Friends Fright Night

## December

Christmas Bird Count

For more information on specific dates and more special events, please visit us at [pc.gc.ca/riding](http://pc.gc.ca/riding)



### 50th ANNIVERSARY OF THE NATIONAL FLAG OF CANADA

The red and white Canadian flag was officially inaugurated in 1965 as a symbol of our nations unity. National Flag of Canada Day is observed annually on February 15.



# VISITOR CENTRE



## Journey into the Visitor Centre in Wasagaming, a remarkable 1930s Federal Heritage Building.

### Information about

Guided Hikes and Outdoor Adventures  
Nature Shop  
Discovery Room  
Theatre  
Organically Managed English Gardens  
Passes, permits & licenses

The park is accessible to persons with mobility, hearing and visual impairments. The Administration Building, Visitor Centre, select campsites, day-use areas, and selected trails are wheelchair accessible. Wheelchairs and all-terrain strollers are available at the Visitor Centre.

### Visitor Centre Hours

May 15 : Noon - 5 pm

May 16 to June 25 : 9:30 am - 5 pm  
(Closed to Tuesday & Wednesday)

June 26 to August 30 : 9:30 am - 8 pm  
(Everyday)

August 31 to October 12 : 9:30 am - 5 pm  
(Closed to Tuesday & Wednesday)

Call 204-848-7275 for more information





# WASAGAMING





A town within a national park - unique charm with everything you want and need for the perfect getaway!

[discoverclearlake.com](http://discoverclearlake.com)

Looking for something to do? Try these suggestions!



### **Main Beach**

Enjoy your day while relaxing on one of the beautiful beaches of Riding Mountain! Located on Wasagaming Drive, the main beach is great for families and friends!



### **The Ominnik Marsh**

Experience the beauty of Riding Mountain on the Ominnik Marsh Trail! Visit the Visitor Centre and grab an explorers kit for catching critters and walking on the marsh in the presence of beavers, ducks and beautiful pond life!



### **Visitor Centre**

Discover the mysteries of the park while talking with park interpreters and exploring the park museum. Riding Mountain interpreters are more than happy to share their knowledge and suggest activities!

# PLAN YOUR DAY WITH A GROUP

## ■ Start your day with a coffee!

Stop by one of the many local coffee shops and cafes in Wasagaming that offer delicious specialty coffees and baked goods.

## ■ Take a Hike!

Riding Mountain has a multitude of trails just waiting to be discovered! Grab a group of friends and hit the trails. Spend your morning hiking the Gorge Creek and see some of the most beautiful sights of the east escarpment. For a complete list of trails visit [pc.gc.ca/riding](http://pc.gc.ca/riding).

## ■ Grab some grub!

The Wasagaming Townsite has many local restaurants to choose from. Want to get out of the townsite and explore more of the park? Check out the Clear Lake Golf course for an amazing steak, or the tenth hole snack bar for the infamous “bear-paw” burger!

## ■ Beach Volleyball

Challenge some friends to a game of beach volleyball in the west corner of the Main Beach! Nestled beside the main pier and the clear lake, this beach volleyball court is a perfect place to let off some steam.

## ■ Dive in!

Clear Lake is the clearest lake in Manitoba. Enjoy your sunny afternoon swimming off the docks, or relax on one of the many beaches the park has to offer. Dive into the great depths of Deep Bay, the deepest beach in the park, lay amongst the sand beach of the Main Beach, or play along the sand bars of South Beach!

## ■ The Martese!

Enjoy the beautiful parkland sunset while coasting the great lake water on the parks biggest boat, The Martese. Choose from an afternoon cruise, dinner cruise or sunset cruise!

## ■ Try your hand at a round of golf!

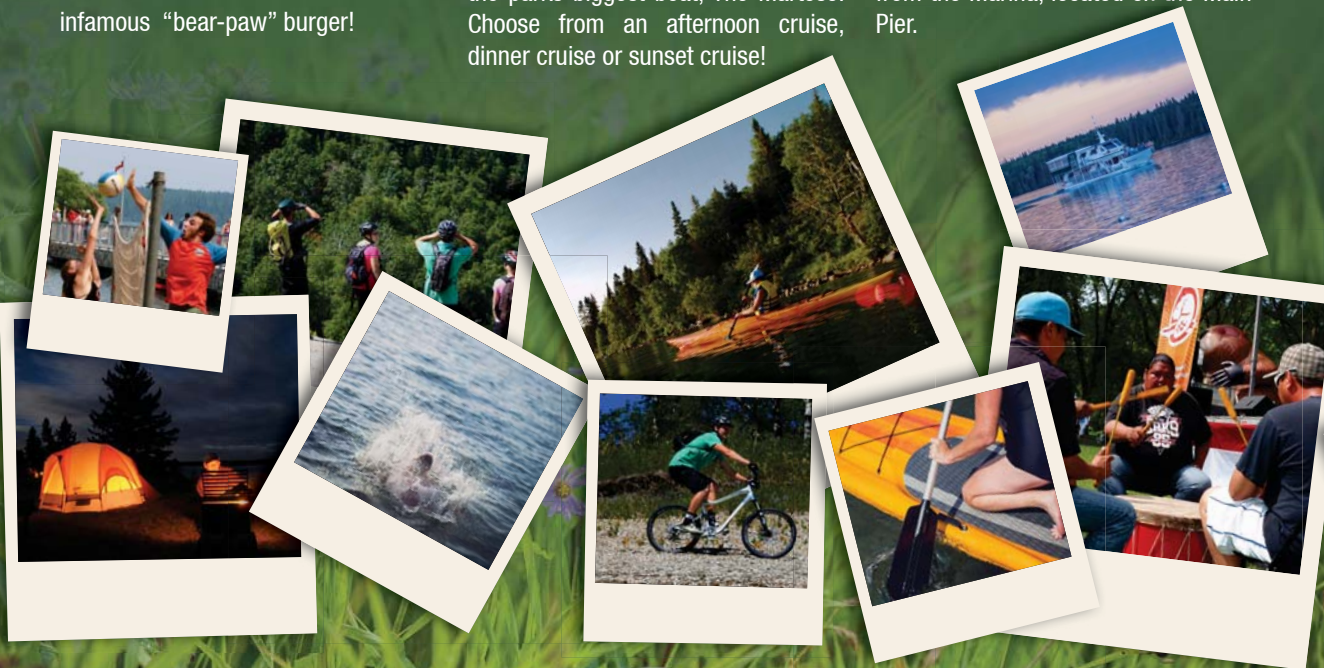
The Clear Lake Golf course is one of the most scenic and unique courses in Manitoba. Enjoy the sunset over the lake as you round the corner of the ninth hole!

## ■ Go for a bike ride!

Explore Wasagaming on a bike or challenge your bike skills on the trail! Riding Mountain has many bike-friendly trails dispersed around the Park. For a complete list of trails, visit [pc.gc.ca/riding](http://pc.gc.ca/riding).

## ■ Go for a Canoe or Kayak!

Experience the many lakes of Riding Mountain while on your canoe or kayak. Plan your trip at the Visitor Centre or visit [pc.gc.ca/riding](http://pc.gc.ca/riding) for a list of lakes. Don't own a canoe or kayak? Rent one from the Marina, located on the Main Pier.





# PLAN YOUR DAY AS A FAMILY

## ■ Cruise the park on a bike!

Enjoy a ride down Wasagaming or Tawapit drive, or test your skills while biking the Clear Lake Trail! Try something new and rent a specialty bike from the Clear Lake Tempo! Or try the Surrey bikes, at the Old Surrey Bike Rentals!

## ■ Playground

Blow off some steam in the playground. Share some laughs while you slide down the slides or swing on the swings. There are no monkeys in the park except you!

## ■ Mini golf

Practicing for the PGA tour? Show off your skills at Mini Golf, just beside the Clear Lake Tennis Courts! Some friendly competition never hurt anyone.

## ■ Paddle boats

Spend an hour paddling along the Clear Lake water, watching the fish swim below your feet! It's a great way to watch the sun set. You can rent these from the Marina on the Main Pier!

## ■ Lawn bowling

Test your skills at bowling at the Clear Lake Lawn Bowling Green. Laugh with your family as you compete in your own bowling Olympics! Who said bowling lanes should only be inside?

## ■ Cookout/Cook shack

End your day dining amongst nature. Riding Mountain gives access to many cook shacks and fire pits dispersed throughout the park. Visit the Visitor Centre or [pc.gc.ca/riding](http://pc.gc.ca/riding) to find the best spot to enjoy a barbecued meal!



## Discover and explore the park through fun-filled adventures and brain busters!

Get your Xplorer booklet today and begin your family's unforgettable journey in Riding Mountain. Best suited for 6-11 year olds.



# SUMMER GUIDED EXPERIENCES

Journey.Laugh.Relax.Play

## July 2nd to August 28th

Join the Riding Mountain National Park interpretive staff for all sorts of fun activities – from hikes to beach-side demonstrations. We'll give you friendly suggestions to put on your "to-do" list of fun... now start checking it off!

For more information visit the Visitor Centre or call 204.848.7275.

Pre-registration is advised.

\*Fees may apply



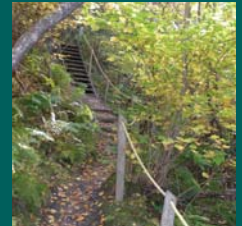
### Fun 'round the Fire

Bring the kids to join friendly interpreters for some fun times and park-themed activities at the campfire. *FREE! Every evening, 8:00 p.m.*

### Breathtaking Gorges and Valleys

Challenge yourself! Leave your comfort zone to explore the stunning vistas of the Gorge Creek Trail – with a guide!

*Tuesdays, 10:00 a.m.*



### Learn-to-Fish

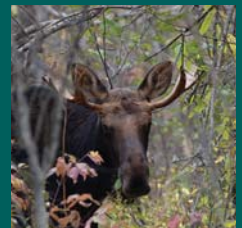
Bring the kids to learn the ins and outs of rods, lures, casting and the fish species to the Park. Help them write their first fish story about "the one that got away!"

*Mondays and Fridays, 2:00 p.m.*

### Wildlife Adventures

Nature awaits you as you follow an interpreter on a drive through the park during the "Call of the Wild" Car Caravan! Be on the lookout for bears, moose and elk – from the comfort of your car!

*Join a driving safari to see the Riding Mountain bison herd – up close!*



### Learn to Kayak

Explore the beauty of Clear Lake while gliding across its waters on a kayak!

## FALL GUIDED EXPERIENCES



### Beginning August 28th

Golden aspen leaves serve as a beautiful backdrop for the bugling elk September and October. Also, keep your eyes open for other large mammals, including bison, moose and deer. If you're really lucky, you might see two male elk clash antlers as they compete for a mate!

For more information visit the Visitor Centre or call 204.848.7275.

Pre-registration is advised.

\*Fees may apply





Sunday

Monday

Tuesday

Wednesday

Thursday

Friday

Saturday

Morning

Breathtaking Gorges and Valleys Hike 10:00a.m.

Delights of the English Gardens 10:00a.m.

Stop by the Visitor Centre to ask about Saturday Activities!

Junior Naturalists 10:00 a.m. - Noon

Afternoon

Junior Naturalists 1:30 p.m. - 3:30 p.m.

Interpretive Action Stations – 2:00 p.m. - FREE!

Lil' Critter Camp 4:00 p.m. – 5:00 p.m.

Evening

Into the Wild: Car Caravan

Young Explorers 7:00p.m. – 9:00 p.m.

Lake Audy Bison Safari

Into the Wild: Car Caravan

Young Explorers 7:00p.m. – 9:00 p.m.

Fun 'round the Fire FREE EVERY NIGHT at 8:00 p.m.



# Camping

## Reserve. Relax. Experience



### BACKCOUNTRY CAMPING

16 Backcountry campsites in wilderness areas, **reservations only**, unserviced.

For reservations call **204-848-7275**.

See **page 18** for a more complete Backcountry Camping list.





### oTENTik Camping

Our oTENTiks promise a fun and easy camping experience in a unique setting in the Wasagaming Campground.



### Wasagaming Campground

487 sites. Serviced and unserviced, oTENTiks and Yurt. Reservations recommended.



### Yurt Camping

Soft-shelled accommodation. In Wasagaming Campground. Reservations only. Available May to October.

For Wasagaming Campground, oTENTik and Yurt camping call **1-877-RESERVE (1-877-737-3783)** or visit [www.reservation.parkscanada.gc.ca](http://www.reservation.parkscanada.gc.ca)



### Moon Lake Campground

29 sites, self-registration, unserviced. Accommodates RV's, tents and trailers.



### Cairns Cabin

October long weekend - April 1st. Reservations only, unserviced. 14.4 km down the Ochre River Trail from Highway 10. Rustic cabin.



### Whirlpool Lake Campground

Walk-in access only, 14 sites, self-registration, unserviced.



### Group Camping : Ma-Ma-O-Pe & Kippechewin

1 site, reservations only, unserviced.



### Lake Audy Campground

32 sites, self-registration, unserviced, and group camping. Accommodates RV's, tents and trailers.



### Deep Lake Campground

12 sites, self-registration, unserviced. Accommodates RV's, tents and trailers.

For Cairns Cabin, group and backcountry camping visit the Park Administration building or call **204-848-7275**.





# First Nations

Immerse yourself in the rich cultural heritage of the Riding Mountain First Nation communities at the Anishinabe Sharing Lodge. Tour Manitoba’s first aboriginal-run museum, speak with elders, artists, cultural leaders and spiritual teachers. Take part in workshops to learn about traditional drumming, crafts and medicines. Gifted storytellers narrate accounts of life in “Washagama Saageygun”, the Anishinabe term for “clear water lake”, now commonly called Clear Lake.

The Keeseekoowenin Ojibway First Nation has a special relationship with Riding Mountain National Park. As landowners along the north and west shores of Clear Lake, they have a connection to this place that goes back for generations.

It is thought that the First Peoples have been living in the Riding Mountain area since the great glacier moved off the land around 10,000 years ago.

First peoples and their descendants share deep connection to this place that goes beyond the rich resources the area offered them. For them, the land represents a gift from the Creator, because all parts of it are sacred.

For more information please visit [www.keeseekoowenin.com](http://www.keeseekoowenin.com)

Clear Lake captures the attention and hearts of all its shores, or spend time on its waters. To the Anishinabe the deep groundwater-fed lake is derived from the Creator and the underground springs that feed it are the veins of Mother Earth.

Parks Canada and the Anishinabe share a common interest of protecting this very special place and will continue to work together to do this.





From the comfort of your vehicle, view the bison of Lake Audy roaming the rough fescue grassland plains, an increasingly rare example of natural prairie in Canada.



# Fescue Grasslands

Home to numerous birds, insects and mammals including close to 40 bison, the fescue grassland of RMNP also support a diverse assemblage of plants and wildflowers found only in this type of grassland. Bison can quickly reach speeds of up to 50 km/hr. For this reason, exercise caution while driving in the Bison Enclosure and please stay in your vehicle; these are wild animals!



## A Special Relationship with Bison

The Anishinabe term for bison is “Mashkode Bizhiki” and means “prairie cow”. This great animal provided sustenance for First Nation peoples for centuries. Today, there is still a special bond between the bison and the First Nation communities with ceremonies conducted to respect and honour the Bison Nation.

## What do you see?



Calves are born from April to May. They are lighter brown in colour than the adults. Up to 27 kg. (60 lbs.) on average.

How many Calves?



3-17 years old.  
Up to 545 kg.  
(1,200 lbs.)

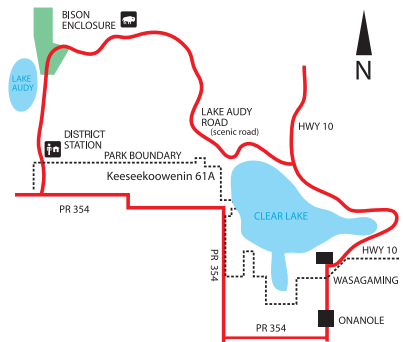
How many Cows?



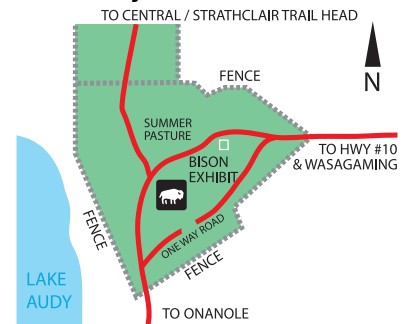
3-20 years old.  
Up to 900 kg.  
(2,000 lbs.)

How many bulls?

## Getting There:



## Lake Audy Bison Enclosure





# TRAILS

Name • Difficulty • Type • Map Reference • Distance

## CYCLING ADVENTURES

Cowan Lake	■ ♣ ♣	4J	7.8 km, one way
Strathclair	● ♣ ♣ ♣ ♣	3G	22.9 km, one way
Wasagaming Bike Trail	■ ♣ ♣	5I	5.5 km, one way
Grey Owl	■ ♣ ♣	4I	8.9 km, one way
Clear Lake North Shore	■ ♣ ♣ ♣	4I	9.5 km, one way
J.E.T.	◆ ♣ ♣ ♣	4K	7.8 km, one way
Bald Hill	◆ ♣ ♣ ♣	4K	8.4 km, one way
Reeves Ravine	◆ ♣ ♣	4K	11.5 km, loop

## GREAT HIKES

Brûlé	● ♣	5J	2.1/4.2 km, return
Oak Ridge	● ♣ ♣	3K	3.1/6.4 km, return
Beach Ridges	● ♣	2H	3.5 km, return
Lakeshore long loop	● ♣ ♣	5I	7.2 km, return
South Lake	■ ♣ ♣	5I	3.4 km, return
Arrowhead	■ ♣	5I	3.4 km, return
Kinosao	■ ♣ ♣	5I	3.9 km, one way
Bead Lakes	■ ♣	4I	4.0 km, return
Clear Lake South Shore	■ ♣ ♣ ♣	5I	7.0 km, one way
Gorge Creek	◆ ♣	5K	6.4 km, one way
Moon Lake	◆ ♣ ♣	3H	9.2 km, return
Tilson Lake	◆ ♣ ♣ ♣	2C	38.6 km, return

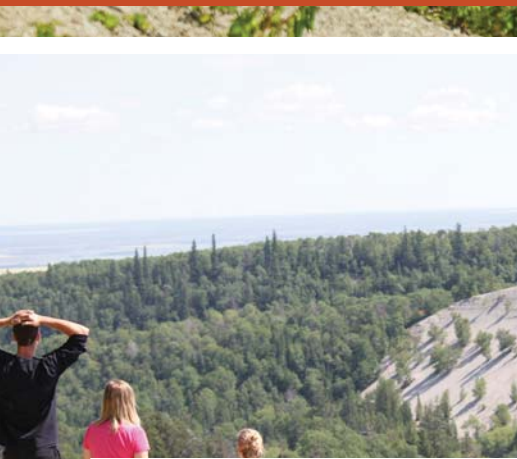
## HORSE AND WAGON TRAILS

Breezy Hill	● ♣ ♣ ♣ ♣		1.8 km, one way
Baldy Lake	● ♣ ♣ ♣ ♣		10 km, one way
Long Lake	● ♣ ♣ ♣ ♣		14.0 km, one way
Grasshopper Valley	● ♣ ♣ ♣		20.5 km, loop
Sugarloaf	● ♣ ♣ ♣ ♣		8.0 km, one way
North Escarpment	■ ♣ ♣ ♣ ♣		8.4 km, one way
Crawford Creek	■ ♣ ♣ ♣		10.0 km, return
Birdtail	■ ♣ ♣ ♣		11.4 km, one way
Central Trail	■ ♣ ♣ ♣ ♣		66.3 km, one way
Gunn Lake	◆ ♣ ♣ ♣ ♣		14.6 km, one way
Ochre River	◆ ♣ ♣ ♣		24.9 km, one way

## FAMILY FRIENDLY (less than 1 hour)

Lakeshore short loop	● ♣ ♣ ♣		1.0 km, one way
Ominnik Marsh	● ♣		1.9 km, return
Boreal	● ♣		1.0 km, return
Kippan's Mill	● ♣		1.2 km, return
Burls & Bittersweet	● ♣		2.2 km, return
Scott Creek	● ♣ ♣		2.4 km, one way
Loon's Island	● ♣		2.4 km, return

Easy  
Accessible  
Moderate  
Difficult







## ATTENTION HIKERS AND BIKERS

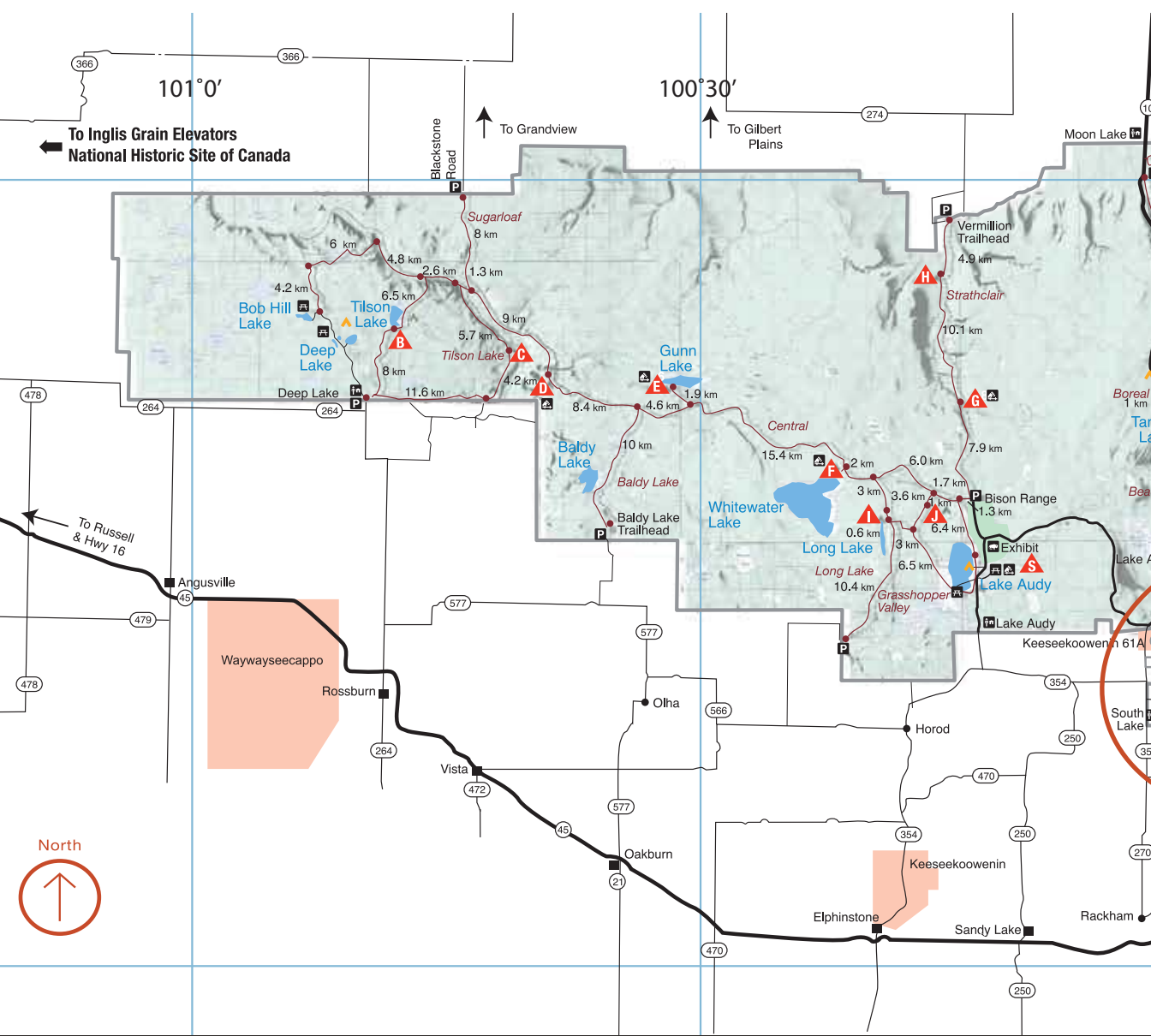
Be one of the first to explore Riding Mountain National Park's newest trail, Reeves Ravine.

The Reeves Ravine trail has been developed in partnership with the Manitoba Escarpment Trail Society and various volunteer groups and is ideal for mountain bikers seeking a new adventure.

This unique escarpment experience along the ravine's edge boasts some of the most spectacular views in the park.

For details on each trail, a Trail Guide is available for purchase at the Nature Shop in the Visitor Centre. For updated trail information please go to [parks.canada.gc.ca/riding](http://parks.canada.gc.ca/riding)





# LEGEND

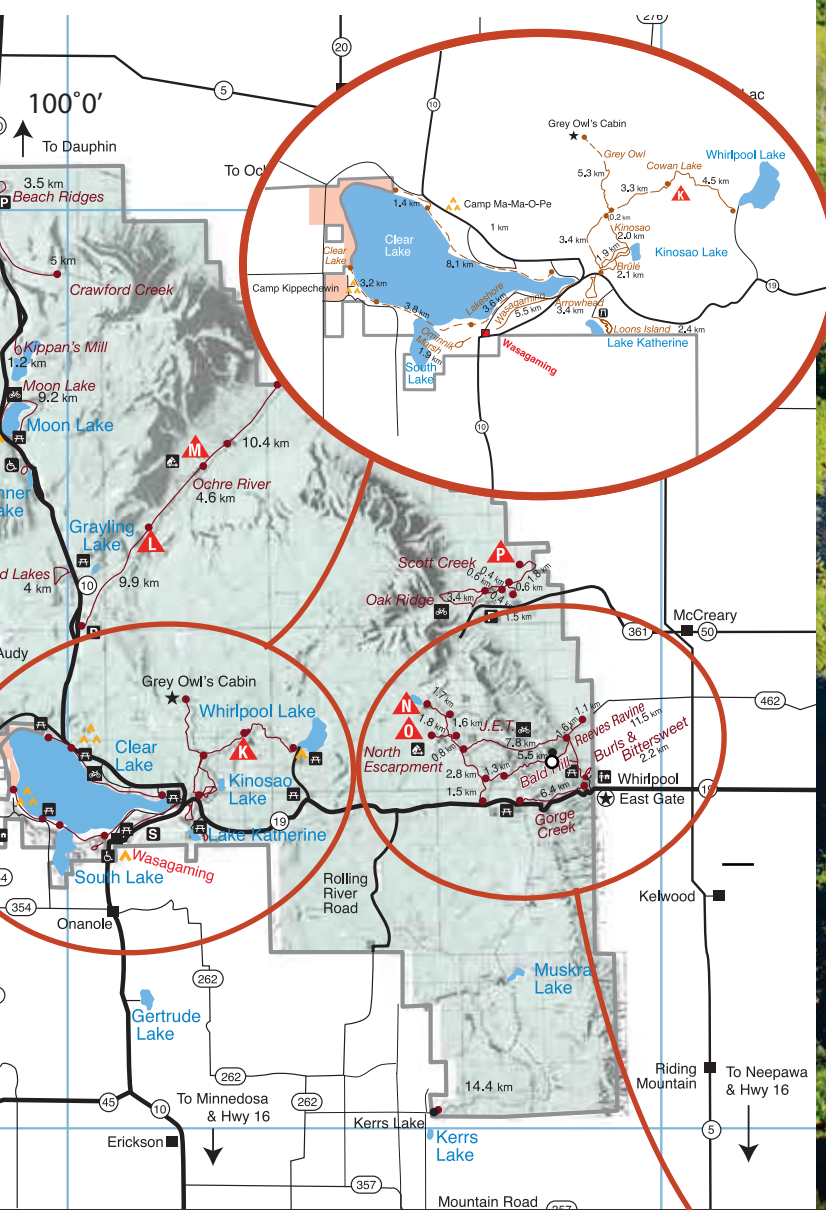
- Backcountry Campsites
- National Historic Site
- Tenting
- Group Tenting
- Bald Hill
- Other Attractions
- Warden Station

- Picnic Area
- Wheelchair Accessible
- Viewpoint
- Bison Enclosure
- Parking
- Horse Corral
- Provincial Roads
- Provincial Trunk Highways
- Trail
- Town

- Landmark
- First Nations
- Tilson Lake
- Birdtail
- Gunn Creek
- Gunn Lake
- Whitewater Lake
- Kinnis Creek
- Vermillion River
- Long Lake

- Minnedosa River
- Cowan Lake
- Elk Creek
- Ochre River
- East Deep Lake
- Breezy Hill
- Scott Creek
- Lake Audy Horse Corral





# RIDING MOUNTAIN NATIONAL PARK

## Distances from Wasagaming

- North Entrance Gate **53 km**
- Deep Lake Campground **113 km**
- Moon Lake Campground **34 km**
- East Entrance Gate **34 km**
- Lake Audy Bison Enclosure **39 km**
- Whirlpool Campground **15 km**



Visit [cachingridingmountain.ca](http://cachingridingmountain.ca) to find out more about Geocaching in the Riding Mountain area. You can download coordinates to some of the Park's hidden treasures onto your GPS unit and then go exploring!

### Don't have your own GPS device?

That's okay! Stop by the Friends Learning Centre and you can pick one up. Call 204-848-4037 for more information.



# WASAGAMING

-  Telephone
-  Parking
-  Accessible
-  Picnic Area
-  Information
-  Washrooms
-  Golf
-  oTENTik
-  Friends of RMNP
-  Marina
-  Camping
-  Showers
-  Trailer
-  Dumping Station
-  Boat Cove
-  Beach
-  Yurt
-  Anishinabe Sharing Lodge



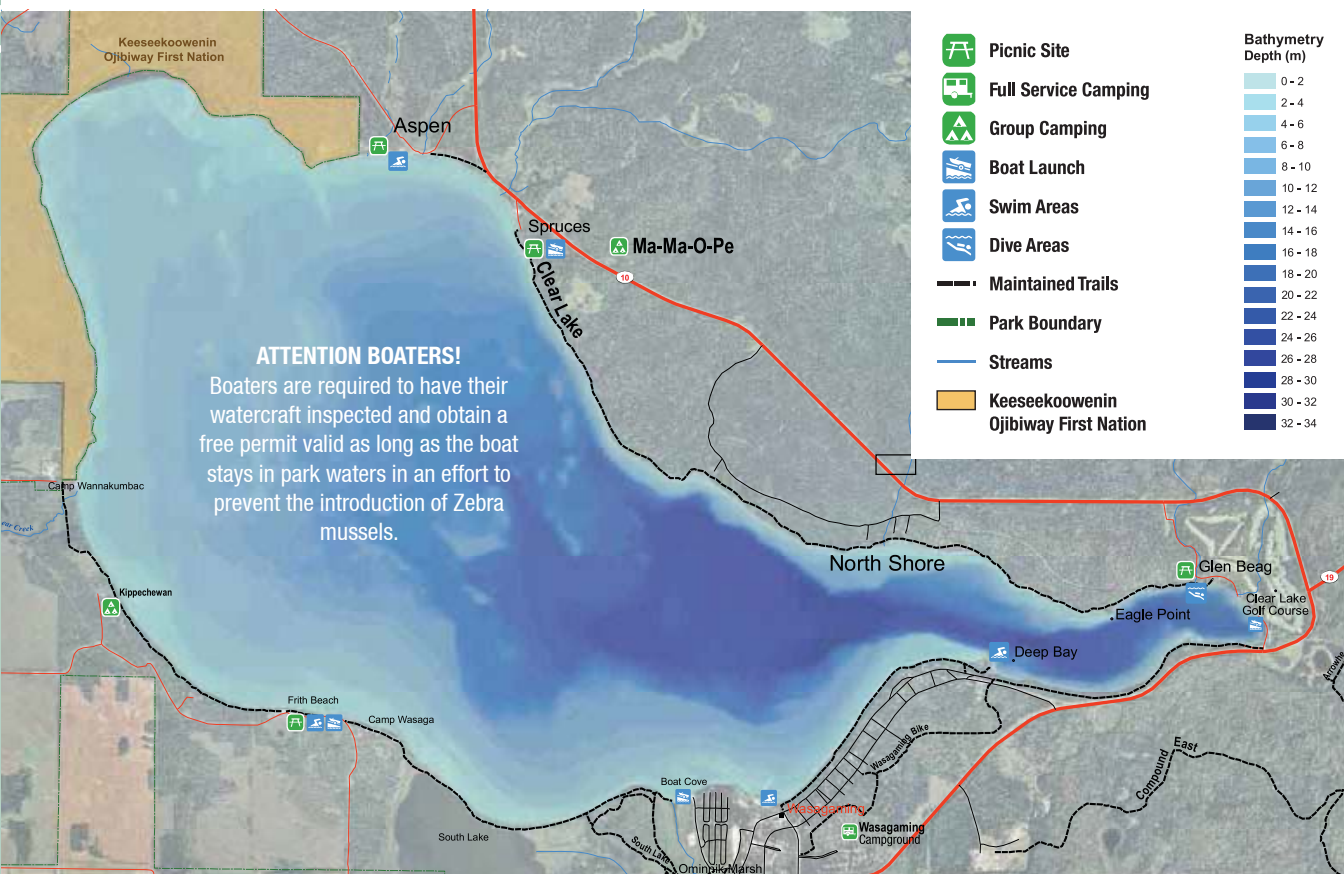
- 1 Park Entrance
- 2 RCMP
- 3 Seasonal Cabin Area
- 4 Jamboree Hall
- 5 Horseshoe Pits
- 6 Playground
- 7 Tennis
- 8 Mini Golf
- 9 Band Stand
- 10 Administrative Building
- 11 Visitor Centre
- 12 Pinewood Museum
- 13 Bowling Green
- 14 Campfire Circle
- 15 Campground Office
- 16 Wasagaming Campground
- 17 Wishing Well
- 18 East Gate National Historic Site



200 m  
1000 ft  
**Map available at**  
[www.parkscanada.gc.ca/riding](http://www.parkscanada.gc.ca/riding)

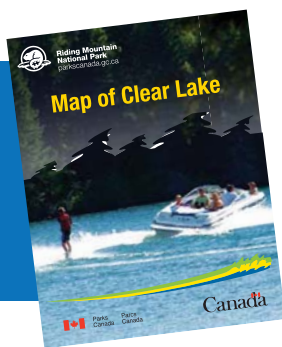


# CLEAR LAKE



**ATTENTION BOATERS!**  
Boaters are required to have their watercraft inspected and obtain a free permit valid as long as the boat stays in park waters in an effort to prevent the introduction of Zebra mussels.

A map of Clear Lake is available through the Friends of RMNP.



**ONLY**  
Four Stroke or Direct Fuel Injected two stroke engines are permitted in RMNP



the  
**choice**  
is yours!



# Experience RIDING MOUNTAIN NATIONAL PARK



**Test your limits by participating in the many group activities available in the park!**

Be sure to check the local bulletin boards for information on activities that are occurring during

your stay at Riding Mountain! These activities include yoga, mountain biking, social events and more.



**Catch the biggest fish in Clear Lake!**

Riding Mountain has many fish friendly lakes throughout the park. Anglers above 16 are required to have a valid RMNP fishing permit and anyone under the

age of 16 must be accompanied by a permit holder. For more information visit [pc.gc.ca/riding](http://pc.gc.ca/riding)



**Have your face painted at one of our special event days.**

Riding Mountain National Park offers many special events throughout the year!

For a complete list of special events go to page 4 or visit [pc.gc.ca/riding](http://pc.gc.ca/riding)



**Savour the simple pleasures during a family picnic or cookout!**

Riding Mountain has many beautiful locations available for visitors to enjoy the outdoors while cooking. Stop by

the cookshacks located in the Wasagaming townsite or explore other locations which have access to fire pits! Find out which park locations have access to fire pits by visiting the Visitor Centre or online at [pc.gc.ca/riding](http://pc.gc.ca/riding).



## CLEAR LAKE LIVING WATERS

Clear Lake's crystal clear waters attract thousands of visitors every year. Parks Canada, Keeseekoowenin Ojibway First Nation, as well as many stakeholders and volunteers, are working to protect the cultural and ecological qualities of Clear Lake.



Initiatives to keep the lake clear...

- Boat emission guidelines
- The annual Clear Lake Cleanup
- Improvements to wastewater treatment facilities
- The use of lake friendly products
- Aquatic monitoring
- Raising public awareness about boating safety and etiquette

The efforts to protect Clear Lake emphasize the value of traditional and local knowledge partnered with scientific research.

## SAVE OUR WILDLIFE

Keep bears wild and alive- maintain a wildlife attractant-free lot or campsite. Please leave any items that will attract wildlife in a hard-sided vehicle when your picnic or cookshelter is unattended for ANY length of time.

### Feeding wildlife may...

- Cause animals to become a nuisance.
- Result in the animal being destroyed.
- Can lead to a maximum fine of \$5,000 underneath Canada National Parks Act.

### Items that attract wildlife...

- Food / coolers
- Garbage & food packaging
- Pet food / pet dishes
- Bottles & cans
- Toiletries, suntan lotion & Insect repellent
- Any items associated with Food preparation or clean up
- Grey water pails
- BBQs and bird feeders

For current trail conditions, bear information and to report bear sightings, please call 204-848-7275 or for wildlife emergencies please call 1-877-852-3100



## DO NOT MOVE FIREWOOD

Invasive forest pests (non-native pests and diseases) can have serious negative impacts on forests, both in your home town and in wilderness areas such as Riding Mountain National Park.

Currently, pests such as the emerald ash borer (EAB) and Asian long-horned beetle are threatening Canadian forests.

The EAB has killed millions of ash trees in North America, and is spreading toward Manitoba quickly. Forest pests such as the emerald ash borer can be transported to unaffected areas through the movement of firewood.

When you are vacationing this summer, please purchase firewood locally and leave it where you brought it.

## Do not move any firewood!



Asian Long-horned Beetle

Emerald Ash Borer

# DON'T MOVE A MUSSEL!

## STOP AQUATIC INVASIVE SPECIES

Zebra mussels (*Dreissena polymorpha*) are a Prohibited Species under The Fisheries Act. Possession and release of zebra mussels in Manitoba are illegal.

Help protect our precious lakes, rivers and wetlands by taking a few important precautions when moving watercraft, trailers, aircraft or before moving any water-based equipment and gear such as docks, nets, bait buckets, ropes, buoys, life jackets, anchors and totes between water bodies.

## BEFORE LAUNCHING AND BEFORE LEAVING

**1. Clean** and inspect watercraft, trailer, aircraft and all water-based equipment or gear. Remove all plants, animals, mud. Rinse using high pressure hot water for at least 2 minutes.

**2. Drain** all water from watercraft, equipment and gear including the motor livewell, bilge, bait buckets and toss before transporting.



**3. Dry** watercraft, trailer and all water-based gear and equipment for at least five days in the hot sun, 18 days in the spring / fall, or freeze for 13 days.

**4. Dispose** of unwanted live bait and worms in trash and dump all in trash and dump all water from bait buckets and totes on land away from any water body.

# Park History

The official grand opening of the park was July 26 1933 with around 2000 people in attendance!  
In 1932 the Parks Branch proposed an essay competition for children.

The winner would win \$50 in addition to having their entry selected as the new name of the Riding Mountain Townsite. Edna Medd, a girl from Winnipegosis, suggested “Wasagaming” the Cree word for “clear water” which has been the name of the townsite ever since.



## Riding Mountain East Gate

Riding Mountain East Gate Registration Complex National Historic Site, built in 1930, is the only Park gate of its kind left standing in Canada.



## Prisoner of War Camp

440 German POW's were sent to Whitewater Lake during WWII



## Wishing Well

Toss a coin and make a wish - one of the oldest traditions in the Park!



## Grey Owl

In 1931 Archibald Belaney, his wife Anahareo and their two pet beavers, Rawhide and Jellyroll, lived at Beaver Lodge Lake, where Grey Owl's Cabin is located.

## FIND OUT MORE!

Visit the Pinewood Museum on Wasagaming Drive, or stop by the Visitor Centre for more information on the fascinating history of Riding Mountain National Park.

## Celebrating the road to 2017

Nearly 150 years ago, at the Charlottetown and Québec conferences, the Fathers of Confederation worked on a visionary project—to create a lasting democracy—which today serves as a model for the world.



# ***THIS COULD BE YOU!***

Riding Mountain National Park has placed  
**10** pairs of red chairs throughout  
the landscape of the park for  
**YOU to DISCOVER.**



**#SharetheChair #TimeToConnect**



### **Go out and explore!**

Take a picture of your Red Chair experience and share it with us (#RidingNP) and we'll add your image to our Facebook and Twitter feeds!



Facebook.com/RidingNP  
Twitter.com/RidingNP





# The Riding Mountain BIOSPHERE RESERVE



The Biosphere Reserve is made up of a core protected area, RMNP, and the surrounding 12 rural municipalities. The Biosphere Reserve fosters and encourages a sustainable community-based regional economy, with high biodiversity on a rural landscape.

- At the Farm Gate - Farmers' markets and a listing of local producers and artisans in the Biosphere Reserve.
- Use of native species plants in landscaping and develop community garden program.
- Adult education workshops and school programs to raise awareness of the conservation of biodiversity.

For more information call 204-848-2085 or visit [rnbr.ca](http://rnbr.ca)

# MEET THE ARTIST



Unwind with friends at the “Meet the Artists” events and discover how new works of art are created.

The Deep Bay Cabin at Riding Mountain National Park was renovated by Parks Canada in 2006 to become the home of the Manitoba Arts Council's Deep Bay Artists' Residency program. Here, in the beautiful natural setting of the Park, artists reflect, experiment and create new art.

Throughout the season the artists feature their work through the “Meet the Artists” events hosted in and around Wasagamung. Look for posters or ask at the Visitor Centre for a listing.

[artscouncil.mb.ca/  
across-manitoba/deep-bay/](http://artscouncil.mb.ca/across-manitoba/deep-bay/)





# The Shops at Clear Lake

## Accommodations

Aspen Ridge  
Cottages at Clear Lake  
Buffalo Resort  
Idylwyld Bungalows  
Lakehouse  
Mooswa Resort  
New Chalet  
Thunderbird Bungalows

## Information / Non-Profit

Friends of RMNP Learning Centre  
Pinewood Museum  
Wasagaming Community Arts Centre  
Riding Mountain

National Park Visitor Centre  
Riding Mountain National Park Administration Building

## Services

Clear Lake gas & Bike Rentals  
Danceland  
Frazer Studios  
Gorge Book/Coffee Shop  
Marina on Clear Lake

Beachcomber Laundromat

## Clothing & Accessories

Boardwalk Clothing  
Chocolate Fox

Deep Bay Clothing  
From the Earth Jewellery  
Gorge Clothing  
Kozy's Trends  
North Shore  
Peach Tree  
Pretty Cool  
Seagulls & Sandcastles  
Summer Fashions  
Sun & Sand  
Moon Lake Trading Co.

## Food & Beverage

Beaver Tails  
Boardwalk Restaurant / Ice

cream  
Chocolate Fox  
The Foxtail Cafe  
Manos Pizza  
Subway  
Lakehouse Ice Cream  
The Sugar Shop  
T.R. McKoy's Italian Restaurant  
Upper Cup  
Whitehouse Restaurant & Bakery  
Wigwam Restaurant & Lounge

## Grocery Stores

Clear Lake Trading Post  
The Boardwalk on

Clear Lake

## Recreation

Clear Lake Gas & Bike Rentals  
Clear Lake Bowling Green  
Clear Lake Tennis Courts  
Old Surrey Station Bike Rentals  
Park Theatre

## Giftware / Home Decor

Bear Behind  
Moon Lake Trading Co.  
Prairie Supply Co.  
The Spinning Wheel Gift Shop  
The Park Bench  
Sun & Sand

The Nature Shop

## Businesses Located Outside Townsite:

Clear Lake Golf Course  
Crooked Mountain Cabins  
Duff's Steakhouse  
Elkhorn Resort  
Trailhead Ranch  
Sportsman's Park  
Onanole RV Park & Campground  
Poplar Ridge Golf Course  
Shuttle Bug  
Westoba Credit Union

Visit

**DiscoverClearLake.com**

The Official Site of Wasagaming Chamber of Commerce

For more information



Welcome to Clear Lake! Are you looking for souvenirs or fine art, hunting for the latest style trends, or searching for unique and eclectic gifts? Clear Lake has exactly what you need. With fantastic dining options and beautiful accommodations, enjoy exploring this unique National Park townsite and the great diversity in its shops, restaurants and services!



# SHOPS at Clear Lake

## Chamber members located outside of the Park:

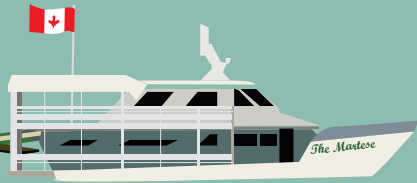
- Crooked Mountain Cabins
- Trailhead Ranch
- Sportsman's Park
- Onanole RV Park & Campground
- Poplar Ridge Golf Course
- Shuttle Bug
- Westoba Credit Union





# Clear Lake

Marina on Clear Lake



Pinewood Museum

Deep Bay

Clear Lake Bowling Greens

Main Beach



Wasagaming Drive

Idylwylde Bungalows

The Boardwalk

The Clear Lake Trading Post & Deep Bay Clothing

Manigaming Resort

Geller Corner All Season Resort

Friends of RMNP Learning Centre

Seagulls & Sandcastles

Beachcomber Clothing Laundromat

Sun & Sand

Summer Fashions

Anishinaabe Sharing Lodge

CAMPGROUND PATH

Wasagaming Campground



Buffalo Drive

Buffalo Resort



Columbine Drive

Cottages at Clear Lake

Tawapit Drive

Mooswa Resort

Duff's Steakhouse

Elkhorn Resort	0.6 km
Clear Lake Golf Course	5 km
Moon Lake	34.9 km
Lake Audy	37.3 km
Dauphin	67.4 km



# WILDLIFE

Out on the trail or from your vehicle, the incredible diversity of animal species within the Park makes it a perfect destination for wildlife watchers.



MOOSE





BISON



WOLF



### Wondering where to spot wildlife?

Register at the Visitor Centre to join a Call of the Wild Car Caravan.

Ask the friendly staff at the Visitor Centre or check the wildlife observation boards located in the lobby of the Visitor Centre or Administration Office for the latest sightings. Record your observations here as well

LYNX



BEAR



PINE MARTEN



COUGAR

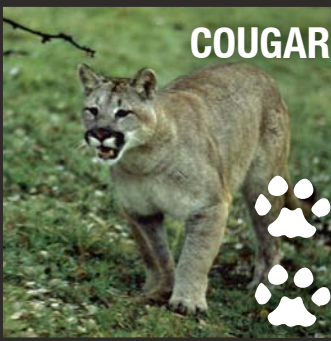


Photo credit: Claus-Peter Ernst

EAGLE



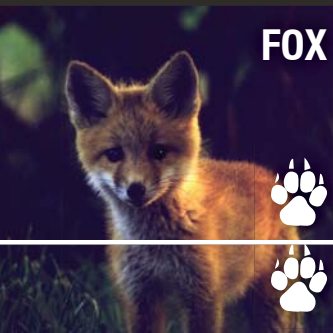
WHITETAIL DEER



### Always Keep Your Distance

Stay safe. No matter how tame they may seem, **ALL** park animals are unpredictable and potentially dangerous.

FOX



BEAVER



ELK







Promoting and providing opportunities to increase the public's awareness, appreciation and enjoyment of the natural and cultural heritage of Riding Mountain National Park.

**Junior Naturalist Programs  
(Friends Learning Centre)**

**Monday to Friday  
10:00 to noon & 1:30 pm to 3:30 pm**

**Young Explorer Programs  
(Friends Learning Centre)**

**Tuesday & Thursday  
7:00 pm to 9:00 pm**

**Li'l Critter Camp  
(Friends Learning Centre)**

**Monday to Friday  
4:00 pm to 5:00 pm**

[www.friendsofridingmountain.ca](http://www.friendsofridingmountain.ca)

 Official Merchandise  
Memories Collection

**MY CANADA  
MY MEMORIES**

**Official Parks Canada Merchandise available exclusively at the Friends of RMNP Nature Shop in Parks Canada Visitor Centre and at The Friends Learning Centre located at 154 Columbine Street!**



Check out our **Made in Canada** products at [parkscanadashop.ca](http://parkscanadashop.ca)

Profits support national parks, marine conservation areas and historic sites.  
Product availability varies by store.



# 2015

## Riding Mountain Photo Contest



### Themes

1. Nature
2. Wildlife
3. People in the Park

### Prize

First place prize package includes a Riding Mountain National Park Annual Family Pass, and the first place photo will appear in the Park's 2016 Visitor Guide.

### Eligibility

Contest is open to everyone, including professional photographers. There is also a Special Junior Photographer category.

### For Full Details

visit [friendsofridingmountain.ca](http://friendsofridingmountain.ca) or inquire at the Nature Shop in the Visitor Centre, or in the Friends Learning Centre at 154 Columbine in Wasagaming.

### Entry Deadline:

December 7th, 2015

### Nature

Jean Orton  
Portage la Prairie, MB



### People In the Park

Christel Stadel  
Hans Schmidinger  
Austria



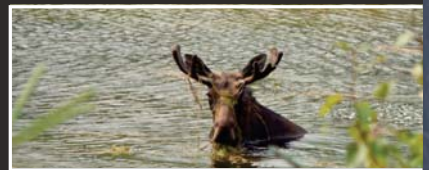
### Wildlife

Jean Orton  
Portage la Prairie, MB



### Junior

Matthew Lee Henry  
Treherne, MB



Last year's Grand Prize winner:

**Rick Bilcowski**

Minnedosa, MB

# Visitor Safety

## Water. Road. Trail.

Play it safe - and enjoy your experience!

Whether you are looking to connect with nature, experience adventure or escape from your daily routines, we want to share with you the 3 T's - Trip Planning, Training and Taking the Essentials - to make sure you stay safe and enjoy your visit.

### Trip Planning

Plan your route. Know the terrain conditions. Check the weather. Always fill out a trip plan and leave it with a family member or friend. - Trip plans are available online [www.adventuresmart.ca](http://www.adventuresmart.ca) or at the visitor centre.

### Training

Obtain the knowledge and skills you need before heading out. Know and stay within your limits.

### Taking the Essentials

Carry the essentials and know how to use them. Add other equipment specific to your activity, the season and location.

- Flashlight
- Fire making kit
- Signalling device (ie. whistle)
- Extra food and water
- Extra clothing
- Navigational/ Communication devices
- First aid kit
- Emergency blanket/shelter
- Pocket knife
- Sun protection



leave no trace | sans trace  
CANADA  
[leavenotrace.ca](http://leavenotrace.ca)

**AdventureSmart**



[adventuresmart.ca](http://adventuresmart.ca)

24 Hour Park Emergency Service, Visitor Safety, Wildlife & Park enforcement  
Toll-free 1-877-852-3100

### Did you know?

#### Fishing.

A Riding Mountain National Park fishing license is required to fish in park waters.

#### Leave it for others to enjoy.

Take nothing but photos and leave nothing but your footprints.

#### Backcountry.

A Backcountry permit is required for overnight backcountry visits. Fees apply.

#### Protect your pets.

Wild animals roam free in National Parks. Keep your pets on a leash and supervised so that they do not harass wildlife, provoke attacks or endanger people. Please be courteous and clean up after your pets.

#### Safety Registration

Parks Canada offers a Safety Registration service for people engaging in potentially hazardous activities.

**\*Reminder:** if you register yourself "out", then you must - by law - register yourself back "in" to prevent an unnecessary and costly search.

#### *What to do if you get lost?*

**Don't panic.** Stay calm and be positive.

**Stay put.** It reduces time and area the searchers are looking for you.

**Seek Shelter.** Protect yourself from the elements, stay warm and dry.

**Signal for help.** Think BIG, think CONTRAST.





## FURTHER READING



**Parkland Tourism Association**  
1-888-528-6484  
parklandtourism.com



**Riding Mountain Biosphere Reserve**  
204-636-2085  
rmbrc.ca



**Keeseekoowenin Ojibway First Nation**  
204-625-2043  
keeseekoowenin.com



**Friends of RMNP**  
204-848-4037  
friendsofridingmountain.ca



**Travel Manitoba**  
1-800-665-0040  
travelmanitoba.com



**Tourism Westman**  
1-866-234-8687  
tourismwestman.ca



**Wasagaming Chamber of Commerce**  
204-848-2742  
discoverclearlake.com



**City of Dauphin**  
1-877-566-5669  
tourismdauphin.ca



**Riding Mountain Seasons of Manitoba**  
riding-mountain.ca

### Riding Mountain National Park

Toll-Free 1-888-773-8888  
1-204-848-PARK (7275)  
**Hearing Impaired**  
TTY 1-866-787-6221  
rmnp.info@pc.gc.ca  
parkscanada.gc.ca/riding

### Wasagaming Campground Reservations

Toll-Free 1-877-737-3783  
1-877-RESERVE  
reservation.parkscanada.gc.ca

### Distances to Wasagaming

#### From: (in hours)

Brandon (1)  
Grand Forks (5)  
Minot (3.5)  
Peace Gardens (2)  
Regina (4.5)  
Saskatoon (6)  
Winnipeg (2.75)  
Yorkton (2.5)



### Emergency 911 Police | Fire | Ambulance

**Royal Canadian Mounted Police (RCMP)**  
1-204-848-2442

### 24 Hour Park Emergency Service Visitor Safety, Wildlife & Park enforcement

Toll-free 1-877-852-3100



 Like us on facebook.com/RidingNP  
 Follow us on twitter.com @Riding NP  
Visit us at parkscanada.gc.ca/riding



Riding Mountain  
National Park

Parc national du  
Mont-Riding



Parks  
Canada

Parcs  
Canada

Canada



**30**  
oTENTiKs  
now available

# oTENTiK

a new way to experience camping!

A unique blend of comfort with  
a taste of outdoor adventure.



We're bringing you closer to nature while providing a roof over your head and a floor beneath your feet – a unique blend of comfort with a taste of outdoor adventure.

Share a moment and create new memories. Book your next Parks Canada vacation today!

**WASAGAMING CAMPGROUND RESERVATIONS**  
1-877-737-3783 • [reservation.parkscanada.gc.ca](http://reservation.parkscanada.gc.ca)  
**INFORMATION**

[parkscanada.gc.ca/riding](http://parkscanada.gc.ca/riding)



Like us on [facebook.com/RidingNP](https://facebook.com/RidingNP)



Follow us on [@Riding NP](https://twitter.com/RidingNP)

Visit us at [parkscanada.gc.ca/riding](http://parkscanada.gc.ca/riding)