



Riding Mountain
National Park

Visitor Guide



Parks
Canada

Parcs
Canada

Canada

Contents

2	Welcome
4	2014 Special Events
5	Visitor Centre
6	Wasagaming
8	Camping
10	Summer Guided Experiences
12	First Nations
13	Audy Fescue Grassland
14	Trails
16	RMNP Map
18	Wasagaming Map
19	Clear Lake Map
20	Experiencing Riding Mountain
22	Park History
23	Doing Your Part
24	The Shops at Clear Lake — Wasagaming Chamber of Commerce
28	Wildlife
30	Friends of RMNP Riding Mountain Biosphere Reserve Meet the Artist
32	Visitor Safety
34	2014 Riding Mountain Photo Contest
35	Contact Information / Further Reading & Resources



Like us on [facebook.com/RidingNP](https://www.facebook.com/RidingNP)
Follow us on twitter.com/RidingNP

Welcome to Riding Mountain National Park!

Welcome to 3,000 km² of possibilities, where the boreal forest, the aspen parkland, and the fescue prairie greet visitors of all ages and abilities. Our welcoming community and pristine wilderness will help you to reconnect with the best of Manitoba and Canada, and offer you a vast array of opportunities for relaxation, laughter, discovery and fun.

The picturesque town of Wasagaming, which bustles on busy summer days, has been creating indelible family memories for generations. The East Gate Registration Complex National Historic Site reminds us of the early days of Canada's national parks system, a system which was founded on the ideals of protecting and presenting nationally significant examples of Canada's natural and cultural heritage, to foster public understanding, appreciation and enjoyment in ways that ensure the ecological and commemorative integrity of these places for present and future generations.

Riding Mountain has something to offer everyone. Whether you get a jump on the lively summer season with an

early spring hike, or you while away a warm summer holiday in one of the new oTENTiks in the Wasagaming Campground, or you spend time listening for the bugling of elk in the fall, or you take part in one of the hundreds of other activities to be experienced in Riding Mountain, you will find so much to see and do. Depending on your interests, your days will be filled with whatever you are looking for: a sense of discovery or the comfort of the familiar, with adventure or relaxation, with beauty and reverence for nature.

Our national parks, national historic sites, and national marine conservation areas are an important part of what makes Canada such a great place to live. From coast to coast to coast, you can explore the very essence of Canada through these special places.

Along with all of our partners and neighbours in the Parkland region, let us be your starting point for an inspiring discovery of all that the area has to offer... we're sure that you will find something to treasure!

STARE AWESOME IN THE FACE

experience
**PROPER
AWESOME**



2014 Special Events

Our list of Special Events is always changing! Get updates at the Visitor Centre, by calling 204-848-7275, or visiting parkscanada.gc.ca/riding.





Canada Day
July 1



Outdoor Concert
August 23

Circle your calendar today!

May 16-19	May Long Weekend – Summer Kickoff!
May 25	Walk for MS - Lakeshore Walk
June 7-8	GPS Adventure Quest
June 13-15	Grey Owl Golf Tournament
June 14-15	Learn to Camp
June 21	National Aboriginal Day
July / Aug.	Flea Market / Saturdays (Sportsman's Park)
July 1	Canada Day & Citizenship Ceremony
July 12	Clear Lake Celebration Day
July 19	Parks Day
July 26-27	Learn to Camp Event
Aug. 8-10	Wasagaming Weekend (Parade & Kiddie Parade)
Aug. 16-23	Tamarack Golf Tournament
Aug. 16-17	Riding Mountain Triathlon & Kids of Steel
Aug. 23	Boo in the Park & Outdoor Concert
Sep. 6-7	RONA MS Bike Tour
Sep. 19-21	Sonics & Sojourns
Oct. 25	Friends Fright Night
Dec. 19	Christmas Bird Count

For more local event listings
visit the tourism links on page 35.

August 23
Boo in the Park



September 6-7
RONA MS Bike Tour



Visitor Centre

Journey into the Visitor Centre in Wasagaming,
a remarkable 1930s Federal Heritage Building

Information about guided
hikes and outdoor adventures

Nature Shop

Discovery Room

Theatre

Organically managed
English Gardens

Passes, permits, & licenses



Visitor Centre Hours

May 16	Noon - 5 pm
May 17 to June 26	9:30 am - 5 pm <i>(Closed Tuesday & Wednesday)</i>
June 27 to August 31	9:30 am - 8 pm <i>(Everyday)</i>
September 1 to October 13	9:30 am - 5 pm <i>(Closed Tuesday & Wednesday)</i>

The park is accessible to persons with mobility,
hearing and visual impairments. The Administration
Building, Visitor Centre, select campsites, day-use
areas, and selected trails are wheelchair accessible.
Wheelchairs and all - terrain strollers are available
at the Visitor Centre.

Call 204-848-7275 for more information.





Main Beach Area



A town within a national park—unique charm with everything you want and need for the perfect getaway!

discoverclearlake.com





Main Beach Area



Camping

Reserve. Relax. Experience.

For Wasagaming Campground, oTENTik and Yurt camping call 1-877-RESERVE (1-877-737-3783) or visit www.reservation.parksCanada.gc.ca

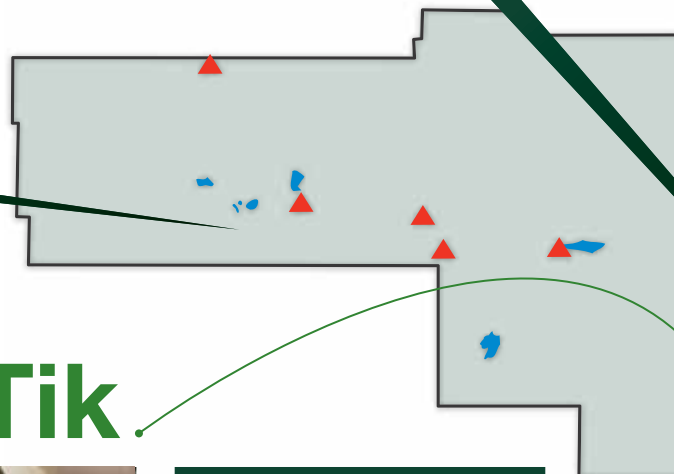
For Cairns Cabin, group and backcountry camping visit the Park Office or call 204-848-7275.



LAKE AUDY CAMPGROUND
32 sites, self-registration, unserviced, and group camping.



DEEP LAKE CAMPGROUND
12 sites, self-registration, unserviced.



oTENTik



Discover camping like never before!

Our oTENTiks promise a fun and easy camping experience in a unique setting in Wasagaming Campground.

Available May to September.

Sleeps up to six people. Reservations required.

Reserve today.

www.reservation.parksCanada.gc.ca • 1-877-RESERVE

CAMP KIPPECHEWIN GROUP CAMPING
1 site, reservations only, unserviced.

16 Backcountry campsites in wilderness areas, *reservations only*, unserviced.

For reservations call **204-848-7275.**

See *page 17* for more complete Backcountry Camping list.





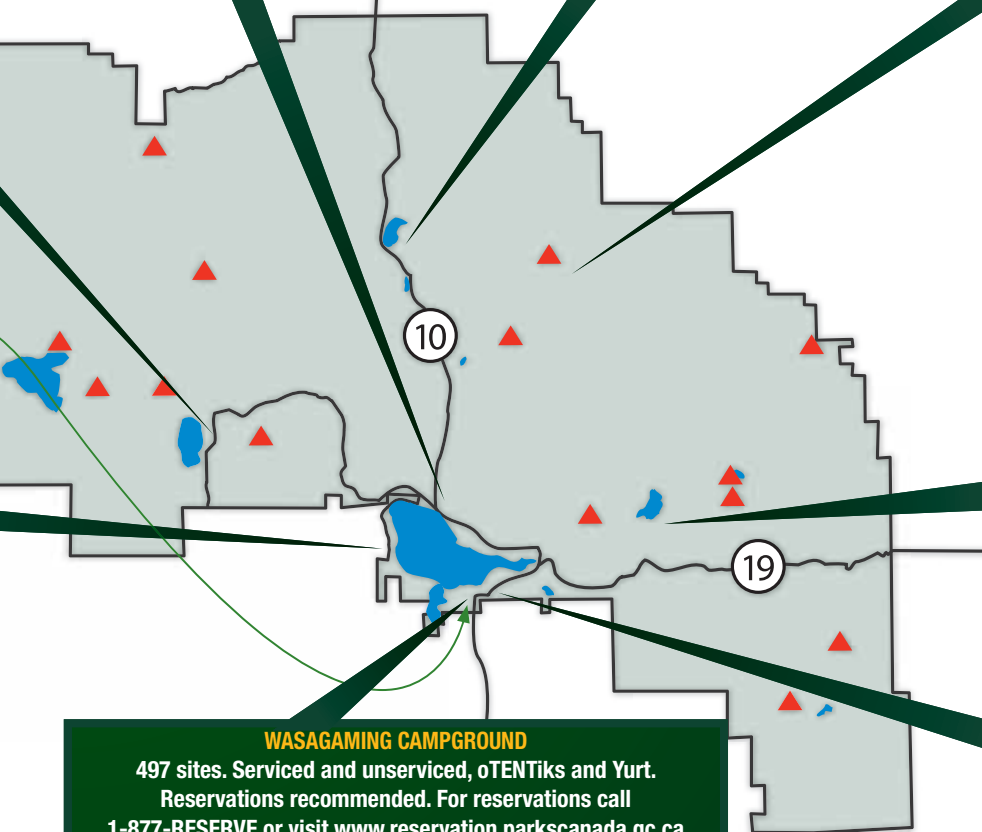
CAMP MA-MA-O-PE GROUP CAMPING
1 site, reservations only, unserviced.



MOON LAKE CAMPGROUND
29 sites, self-registration, unserviced.



CAIRN'S CABIN
14.4 km down the Ochre River Trail. Rustic cabin. Reservations only, unserviced. *Winter months only.*



WHIRLPOOL LAKE CAMPGROUND
Walk-in access only, 15 sites, self-registration, unserviced.



YURT CAMPING
Soft-shelled accommodation. In Wasagaming Campground. Reservations only. *Available May to October.*



WASAGAMING CAMPGROUND
497 sites. Serviced and unserviced, oTENTiks and Yurt. Reservations recommended. For reservations call 1-877-RESERVE or visit www.reservation.parkscanada.gc.ca



Summer

Guided Experiences



Journey. Laugh. Relax. Learn. Play.

Whatever your mood, no matter your age, our interpretive experiences have something for you!

Sunday	Monday	Tuesday	Wednesday	Thursday	Friday	Saturday
		10 am Gorge Creek Hike ↑ 🚗 *		10 am Garden Tour ↑ *		 Information available at the Visitor Centre for Saturday activities.
MONDAY TO FRIDAY <i>Jr. Naturalist</i> Ages 5-12 🌲 ↑ * 10 am & 1:30 am 10 am & 1:30 am 10 am & 1:30 am 10 am & 1:30 am 10 am & 1:30 am 10 am to 12 pm & 1:30 pm to 3:30 pm						
FREE EVERYDAY <i>Daily Interpretive in Action Stations</i> 🏰 ○						
2 pm	2 pm	2 pm	2 pm	2 pm	2 pm	2 pm
MONDAY TO FRIDAY <i>Li'l Critter Camp</i> Ages 5+ 🌲 🏠 * 4 pm 4 pm 4 pm 4 pm 4 pm 4 pm to 5 pm						
 7 pm Into the Wild Car Caravan ↑ * 🚗	7-9 pm Young Explorers <i>Wilderness Survival</i> (Ages 7-14) 🌲 🏠 *	 7 pm Lake Audy Bison Safari 🚗 🏠 ○	 7 pm Into the Wild Car Caravan ↑ * 🚗	7-9 pm Young Explorers <i>Intro to Archaeology</i> (Ages 7-14) 🌲 🏠 *	 4 pm to 5 pm	
FREE EVERYNIGHT Join us every evening at 8 pm for one of our lively campfire programs!						
8 pm Bear Aware <i>Campfire Program</i> 🌲 ○	8 pm Songs of Riding Mountain <i>Campfire Program</i> 🌲 ○	8 pm Wilderness Wisdom <i>Campfire Program</i> 🌲 ○	8 pm Wolf <i>Campfire Program</i> 🌲 ○	8 pm Songs of Riding Mountain <i>Campfire Program</i> 🌲 ○	8 pm Alien Invasion <i>Campfire Program</i> 🌲 ○	8 pm Special <i>Campfire Program</i> 🌲 ○

↑ Meet at Visitor Centre 🏠 Meet at Friends Learning Centre (154 Columbine) 🌲 Wasagaming Campground 🚗 Vehicle Required * Fees Apply ○ Free Admission
 🏖 Beach by Pier 🐾 Meet at Bison Exhibit (Lake Audy) 🌲 Friends of RMNP Program



July 2 to August 22

Fall Guided Experiences

Starting August 28

Golden aspen leaves serve as a beautiful backdrop for the bugling elk in September and October. Also keep your eyes open for other large mammals, including bison, moose, and deer. If you're really lucky, you might see two male elk clash antlers as they compete for females.

For more information visit the Visitor Centre or call 204-848-7275.

Pre-registration is advised.

***Fees may apply.**



Call 204-848-7275 today!

Like us on [facebook.com/RidingNP](https://www.facebook.com/RidingNP)
Follow us on twitter.com/RidingNP



First Nations

Immerse yourself in the rich cultural heritage of the Riding Mountain First Nation communities at the Keesee Sharing Lodge. Tour Manitoba's first aboriginal-run museum, speak with elders, artists, cultural leaders and spiritual teachers. Take part in workshops to learn about traditional drumming, crafts and medicines. Gifted storytellers narrate accounts of life in "Washagama Saageygun", the Anishinabe term for "clear water lake", now commonly called Clear Lake.

The Keeseekoowenin Ojibway First Nation has a special relationship with Riding Mountain National Park. As landowners along the north and west shores of Clear Lake, they have a connection to this place that goes back for generations.

It is thought that the First Peoples have been living in the Riding Mountain area since the great glacier moved off the land around 10,000 years ago.

First Peoples and their descendents share a deep connection to this place that goes beyond the rich resources the area offered

them. For them, the land represents a gift from the Creator, because all parts of it are sacred.

Clear Lake captures the attention—and hearts—of all those who come to its shores, or spend time on its waters. To the Anishinabe the deep groundwater-fed lake is derived from the Creator and the underground springs that feed it are the veins of Mother Earth.

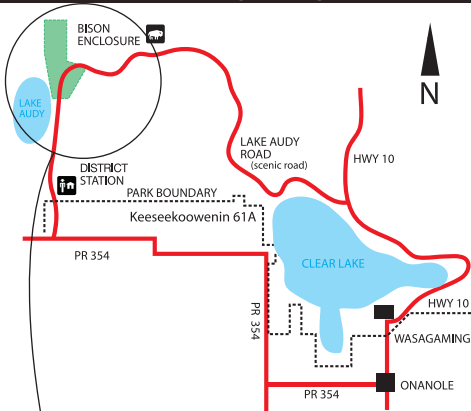
Parks Canada and the Anishinabe share a common interest of protecting this very special place and will continue to work together to do this.

For more information please email keeseelodge@mts.net or visit www.keeseekoowenin.com

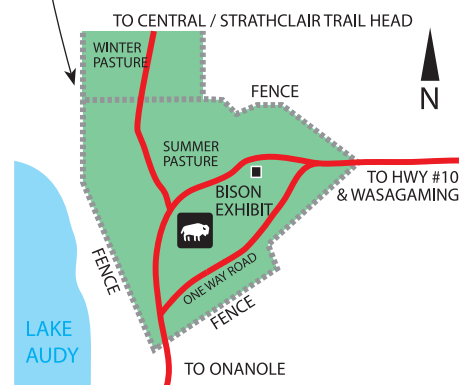


Audy Fescue Grassland

GETTING THERE



LAKE AUDY BISON ENCLOSURE



WHAT DID YOU SEE?



Calves are born from April to May. They are lighter brown in colour than the adults. Up to 27 kg. (60 lbs.) on average.

HOW MANY?

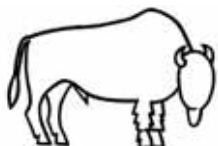
Calves



3–17 years old.
Up to 545 kg.
(1,200 lbs.)

HOW MANY?

Cows



3–20 years old.
Up to 900 kg.
(2,000 lbs.)

HOW MANY?

Bulls

From the comfort of your vehicle, view the bison of Lake Audy roaming the rough fescue grassland plains, an increasingly rare example of natural prairie in Canada.



Home to numerous birds, insects and mammals including close to 40 bison, the fescue grassland of RMNP also support a diverse assemblage of plants and wildflowers found only in this type of grassland.

Bison can quickly reach speeds of up to 50 km/hr. For this reason, exercise caution while driving in the Bison Enclosure and please stay in your vehicle; these are wild animals!

A Special Relationship with Bison

The Anishinabe term for bison is “Mashkode Bizhiki” and means “prairie cow”. This great animal provided sustenance for First Nation peoples for centuries. Today, there is still a special bond between the bison and the First Nation communities with ceremonies conducted to respect and honour the Bison Nation.



Trails



Accessible



Easy

Name • Difficulty • Type

CYCLING ADVENTURES

Cowan Lake	■ ♿	4J	7.8 km, one way
Strathclair	● ♿ ♿ ♿ ♿ ♿	3G	22.9 km, one way
Wasagaming Bike Trail	■ ♿	5I	5.5 km, one way
Grey Owl	■ ♿	4I	8.9 km, one way
Clear Lake North Shore	■ ♿ ♿ ♿	4I	9.5 km, one way
J.E.T.	◆ ♿ ♿	4K	7.8 km, one way
Bald Hill	◆ ♿ ♿ ♿	4K	8.4 km, one way
Reeves Ravine	◆ ♿	4K	11.5 km, loop

GREAT HIKES

Brûlé	● ♿	5J	2.1/4.2 km, return
Oak Ridge	● ♿	3K	3.1/6.4 km, return
Beach Ridges	● ♿	2H	3.5 km, return
Lakeshore long loop	● ♿	5I	7.2 km, return
South Lake	■ ♿	5I	3.4 km, return
Arrowhead	■ ♿	5I	3.4 km, return
Kinosao	■ ♿	5I	3.9 km, one way
Bead Lakes	■ ♿	4I	4.0 km, return
Clear Lake South Shore	■ ♿ ♿ ♿	5I	7.0 km, one way
Gorge Creek	◆ ♿	5K	6.4 km, one way
Moon Lake	◆ ♿	3H	9.2 km, return
Tilson Lake	◆ ♿ ♿ ♿	2C	38.6 km, return



Adventures just for kids!

Discover and explore the park through fun-filled adventures and brain busters! Get your Xplorer booklet today and begin your family's unforgettable journey in Riding Mountain. Best suited for 6-11 year olds.

Moderate

◆ Difficult

• Map Reference • Distance

HORSE AND WAGON TRAILS

Breezy Hill	●	🐾 🚲 🏠 🚚	4K	1.8 km, one way
Baldy Lake	●	🐾 🚲 🏠 🚚	4E	10 km, one way
Long Lake	●	🐾 🚲 🏠 🚚	4G	14.0 km, one way
Grasshopper Valley	●	🐾 🚲 🏠	4G	20.5 km, loop
Sugarloaf	●	🐾 🚲 🏠 🚚	2D	8.0 km, one way
North Escarpment	■	🐾 🚲 🏠 🚚	4K	8.4 km, one way
Crawford Creek	■	🐾 🚲 🏠	2I	10.0 km, return
Birdtail	■	🐾 🚲 🏠	2C	11.4 km, one way
Central Trail	■	🐾 🚲 🏠 🚚	3F	66.3 km, return
Gunn Lake	◆	🐾 🚲 🏠 🚚	3E	14.6 km, one way
Packhorse	◆	🐾 🚲 🏠	4K	11.5 km, return
Ochre River	◆	🐾 🚲 🏠	4I	24.9 km, one way
Muskrat Lake	●	🐾 🚲 🏠 🚚	6K	9.3 km, one way

FAMILY FRIENDLY (less than 1 hour)

Lakeshore short loop	●	🐾 🚲 🦽	5I	1.0 km, one way
Ominnik Marsh	●	🐾	5I	1.9 km, return
Boreal	●	🐾	3I	1.0 km, return
Kippan's Mill	●	🐾	2I	1.2 km, return
Burls & Bittersweet	●	🐾	4K	2.2 km, return
Scott Creek	●	🐾 🚲	3K	2.4 km, one way
Loon's Island	●	🐾	5J	2.4 km, return

Reeves Ravine

ATTENTION HIKERS AND BIKERS

Photo credit: Dene Sinclair

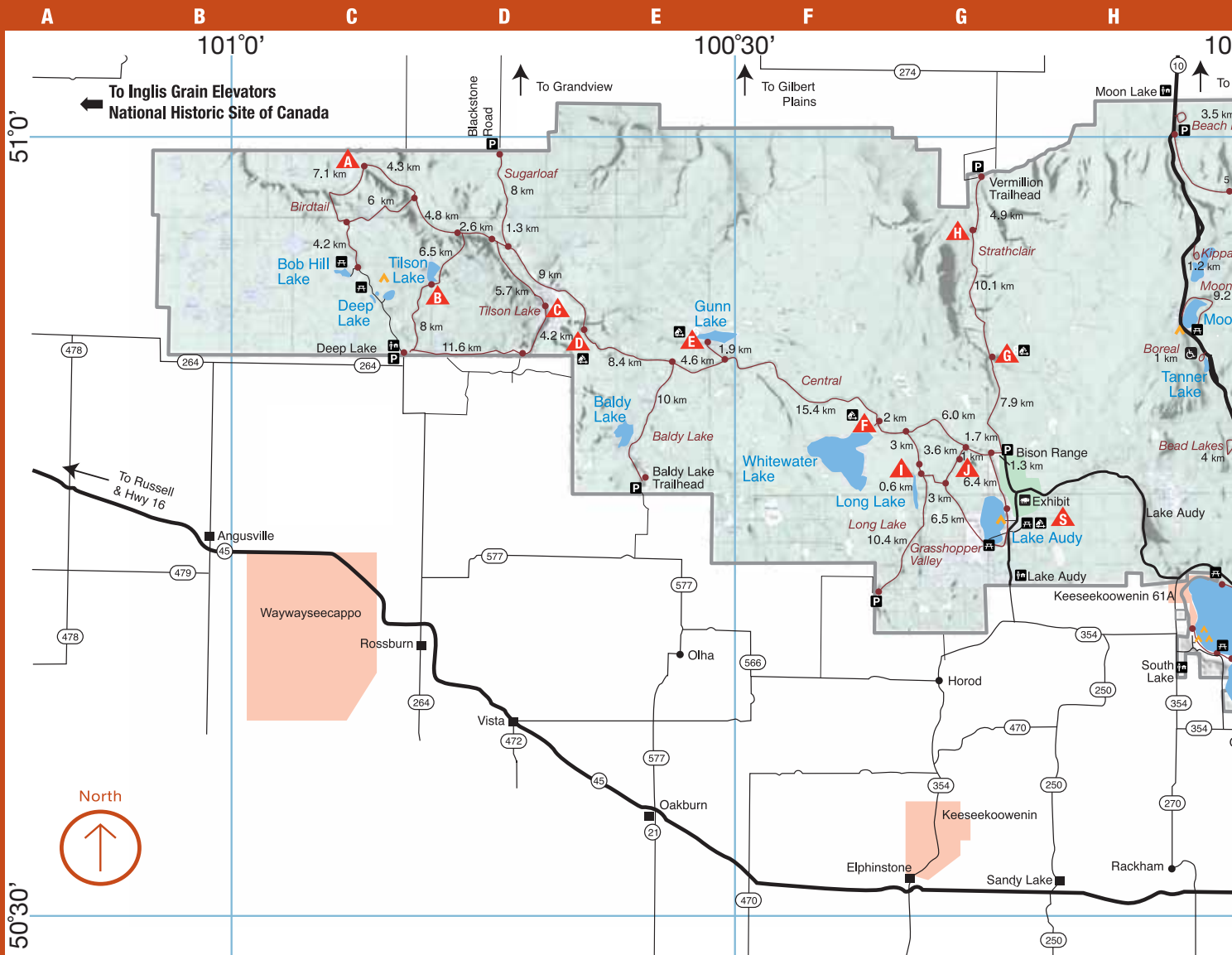
Be one of the first to explore Riding Mountain National Park's newest trail, Reeves Ravine.

Reeves Ravine has been developed in partnership with the Manitoba Escarpment Trail Society and is ideal for mountain bikers seeking a new adventure.

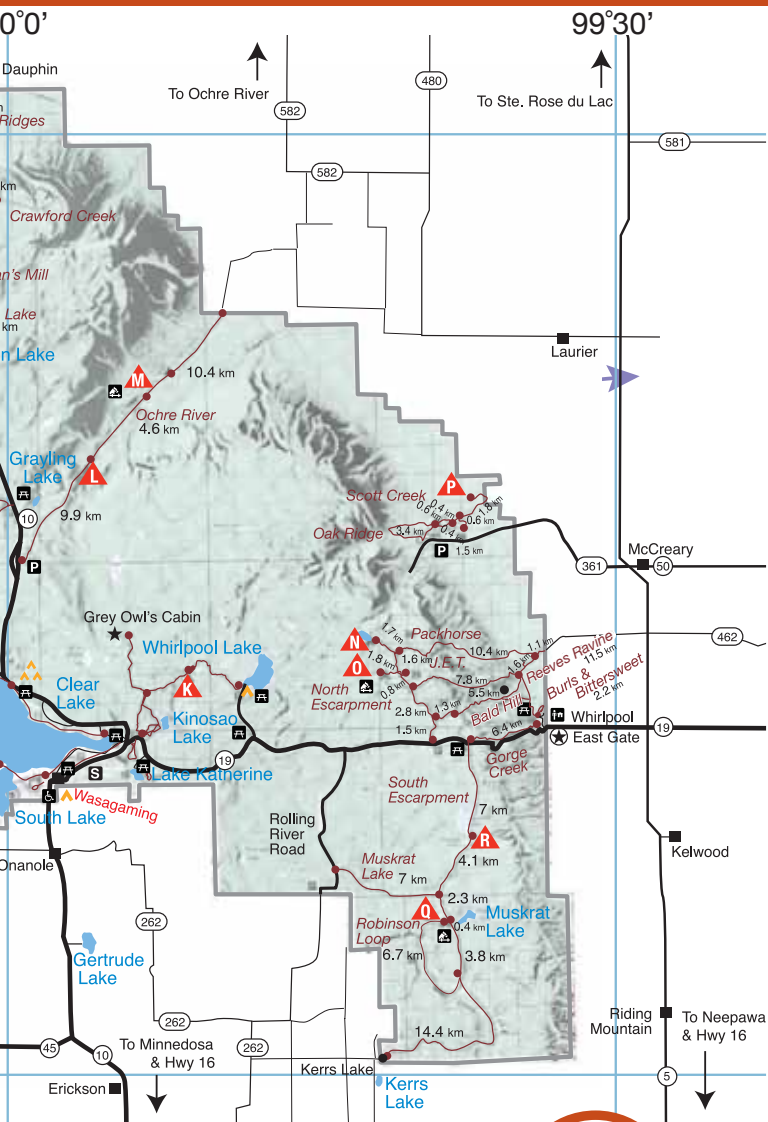
This unique escarpment experience along the ravine's edge boasts some of the most spectacular views in the Park.

For details on each trail, a Trail Guide is available for purchase at the Nature Shop in the Visitor Centre. For updated trail information please go to parksCanada.gc.ca/riding





Riding Mountain National Park of Canada



Distances from Wasagaming



North Entrance Gate 53 km East Entrance Gate 34 km
 Lake Audy Bison Enclosure 39 km Deep Lake Campground 113 km
 Moon Lake Campground 34 km Whirlpool Lake Campground 15 km

LEGEND

- | | | | |
|--|---------------------------|--|------------------------|
| | National Historic Site | | Backcountry Campsites |
| | Tenting | | Kay's |
| | Group Tenting | | Tilson Lake |
| | Bald Hill | | Birdtail |
| | Other Attractions | | Gunn Creek |
| | Warden Station | | Gunn Lake |
| | Picnic Area | | Whitewater Lake |
| | Wheelchair Accessible | | Kinnis Creek |
| | Viewpoint | | Vermillion River |
| | Bison Enclosure | | Long Lake |
| | Parking | | Minnedosa River |
| | Horse Corral | | Cowan Lake |
| | Provincial Roads | | Elk Creek |
| | Provincial Trunk Highways | | Ochre River |
| | Trail | | East Deep Lake |
| | Town | | Breezy Hill |
| | Landmark | | Scott Creek |
| | First Nations | | Muskrat Lake |
| | | | Campbell Lake |
| | | | Lake Audy Horse Corral |






Visit cachingridingmountain.ca to find out more about Geocaching in the Riding Mountain area. You can download coordinates to some of the Park's hidden treasures onto your GPS unit and then go exploring!

Don't have your own GPS device?

That's okay! Stop by the Friends Learning Centre and you can pick one up. Call 204-848-4037 for more information.



Wasagaming

- | | |
|---|--|
|  Telephone |  Anchorage |
|  Parking |  Camping |
|  Accessible |  Showers |
|  Picnic Area |  Trailer |
|  Information |  Dumping Station |
|  Washrooms |  Boat Cove |
|  Golf |  Beach |
|  oTENTik |  Yurt |
|  Friends of RMNP |  Keeseekoowenin Sharing Lodge |













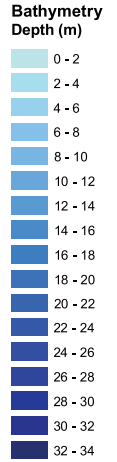
- 1 Park Entrance
- 2 RCMP
- 3 Seasonal Cabin Area
- 4 Jamboree Hall
- 5 Horseshoe Pits
- 6 Playground
- 7 Tennis
- 8 Mini Golf
- 9 Band Stand
- 10 Administrative Building
- 11 Visitor Centre
- 12 Pinewood Museum
- 13 Bowling Green
- 14 Campfire Circle
- 15 Campground Office
- 16 Wasagaming Campground
- 17 Wishing Well
- 18 East Gate National Historic Site



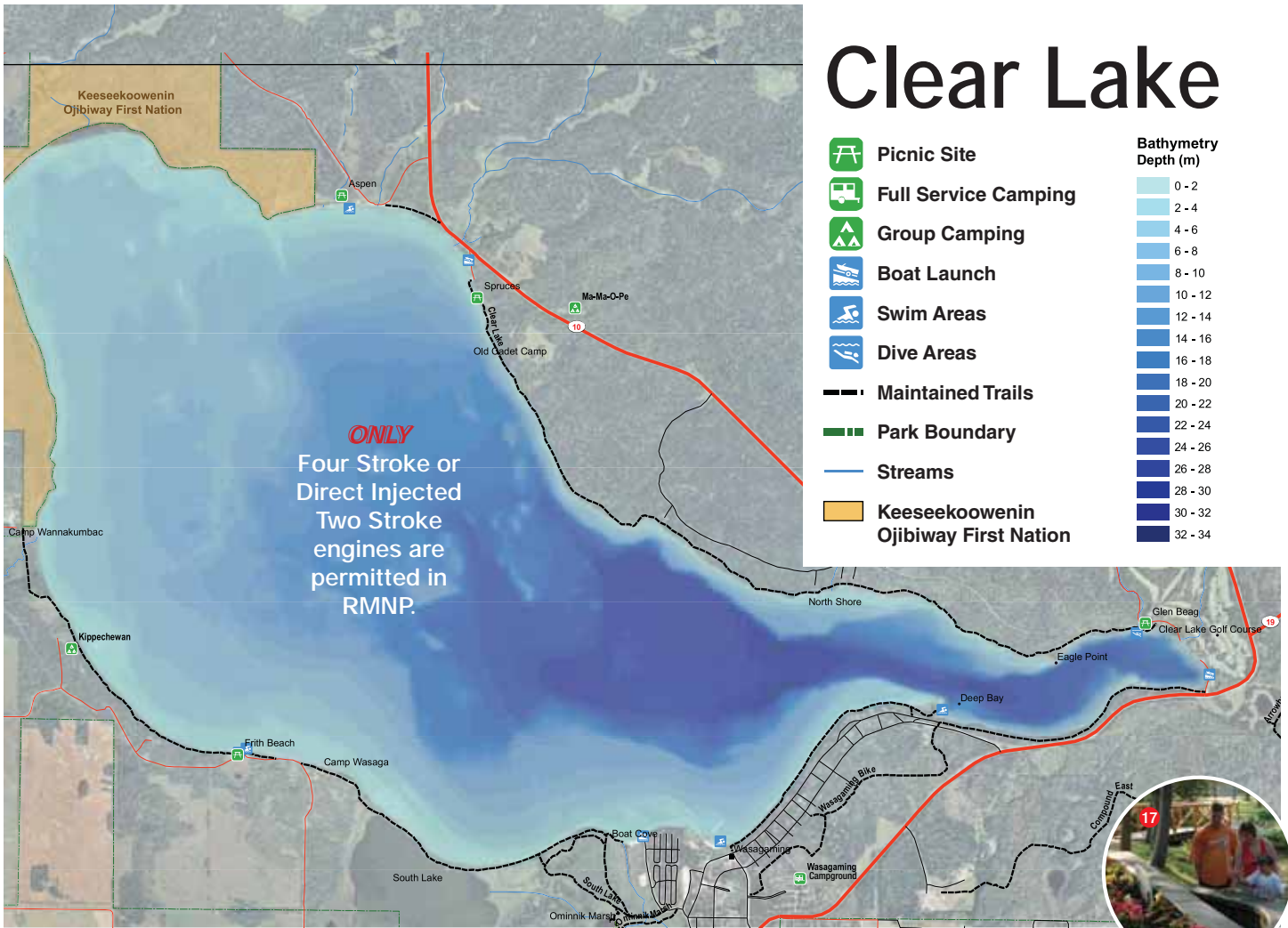
Map available at
www.parkscanada.gc.ca/riding

Clear Lake

-  Picnic Site
-  Full Service Camping
-  Group Camping
-  Boat Launch
-  Swim Areas
-  Dive Areas
-  Maintained Trails
-  Park Boundary
-  Streams
-  Keeseekoowenin Ojibway First Nation

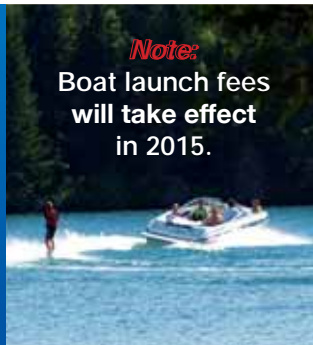


ONLY
Four Stroke or
Direct Injected
Two Stroke
engines are
permitted in
RMNP.



STOP
Aquatic
Invasive
Species
**Zebra
Mussels!**

See page 23 for
more information.



Note:
Boat launch fees
will take effect
in 2015.



A photograph of a sailboat on a lake at sunset. The sun is low on the horizon, creating a bright orange and yellow glow across the sky and water. The sailboat is on the right side of the frame, with its mast and rigging visible. The text 'Experiencing Riding Mountain' is overlaid on the image, with 'Experiencing' in orange and 'Riding Mountain' in white.

Experiencing Riding Mountain

Challenge yourself to catch the biggest fish in Clear Lake!

Have your face painted at one of our special event days.

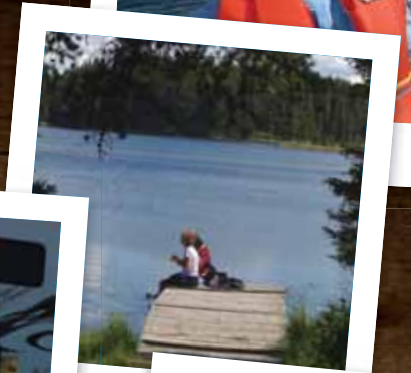
Savour the simple pleasures with your
nearest and dearest during a family picnic.

Test your limits during the
Riding Mountain Triathlon.

Feel goose bumps as you gaze over the striking
mix of forest, ravine and distant Manitoba farmland.

Seize the day and celebrate while you make the
most of your visit to Riding Mountain National Park...

the • choice *is yours!*



Park History



Riding Mountain East Gate

Riding Mountain East Gate Registration Complex National Historic Site, built in 1930, is the only original Park gate left standing in Canada.



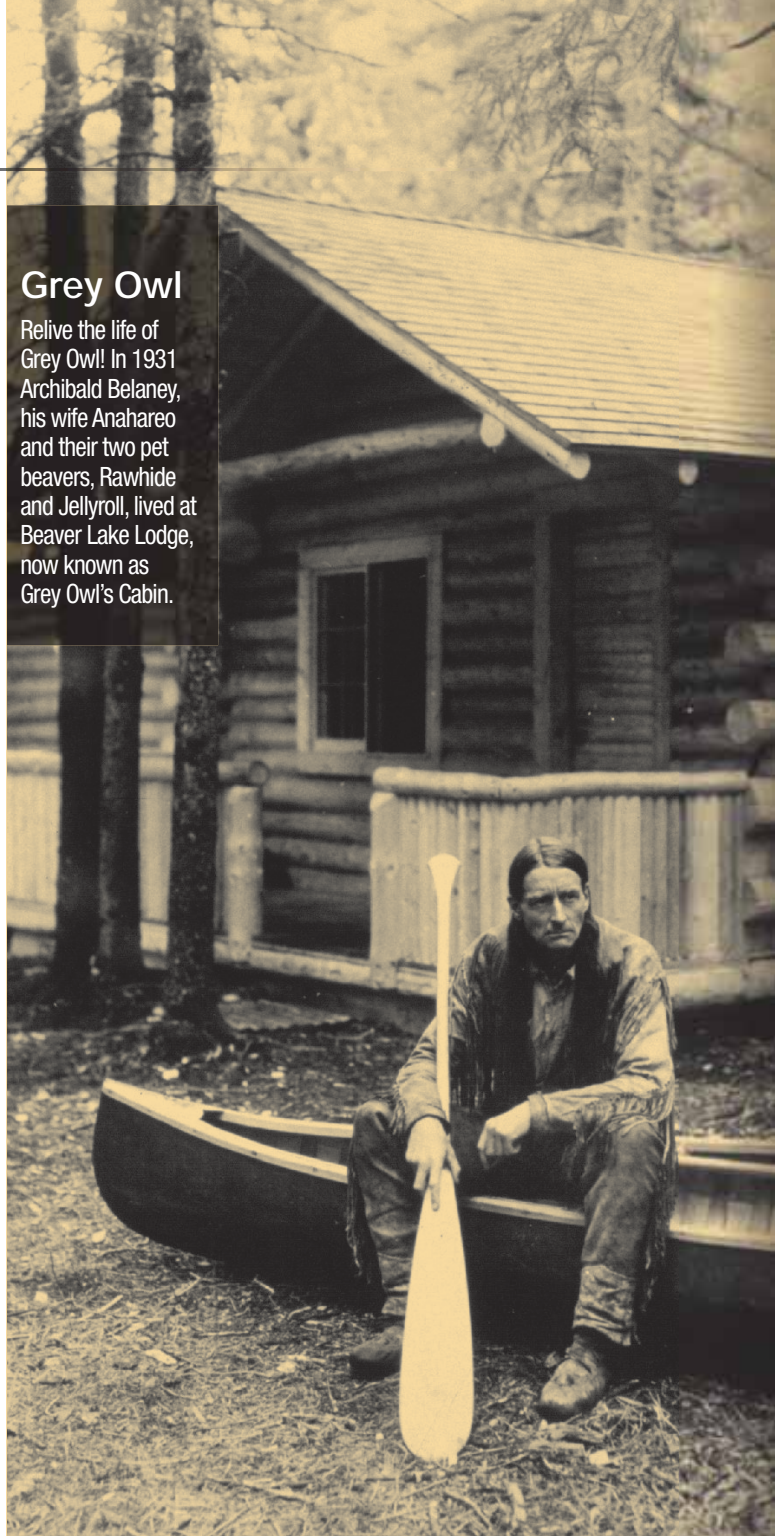
Wishing Well

Toss a coin and make a wish – one of the oldest traditions in the Park!



Prisoner of War Camp

440 German POWs were sent to Whitewater Lake during WWII.



Grey Owl

Relive the life of Grey Owl! In 1931 Archibald Belaney, his wife Anahareo and their two pet beavers, Rawhide and Jellyroll, lived at Beaver Lake Lodge, now known as Grey Owl's Cabin.

Doing Your Part



KEEPING THE "CLEAR" IN CLEAR LAKE

Clear Lake's crystal clear waters attract thousands of visitors every year. Parks Canada, Keeseekoowenin Ojibway First Nation, as well as many stakeholders and volunteers, are working to protect the cultural and ecological qualities of Clear Lake.



Initiatives to keep the lake clear...

- boat emission guidelines
- the annual Clear Lake Cleanup
- improvements to wastewater treatment facilities
- the use of lake friendly products
- aquatic monitoring
- raising public awareness about boating safety and etiquette.

The efforts to protect Clear Lake emphasize the value of traditional and local knowledge partnered with scientific research.

SAVE OUR WILDLIFE

Keep bears wild and alive—maintain a wildlife attractant-free lot or campsite. Please leave any items that will attract wildlife in a hard-sided vehicle when your picnic or cook shelter is unattended for ANY length of time.

Feeding wildlife may...

- Cause animals to become a nuisance.
- Result in the animal being destroyed.
- Can lead to a maximum fine of \$5,000 under the *Canada National Parks Act*.

Items that attract wildlife...

- Food / coolers
- Garbage & food packaging
- Pet food / pet dishes
- Bottles & cans
- Toiletries, suntan lotion, insect repellent
- Any items associated with food preparation or clean up
- Grey water pails
- BBQs and bird feeders

For current trail conditions, bear information and to report bear sightings, please call 204-848-7275

For wildlife emergencies please call 1-877-852-3100



DO NOT MOVE FIREWOOD

Invasive forest pests (non-native pests and diseases) can have serious negative impacts on forests, both in your home town and in wilderness areas such as Riding Mountain National Park.

Currently, pests such as the emerald ash borer (EAB) and Asian long-horned beetle are threatening Canada's forests.

The EAB has killed millions of ash trees in North America, and is spreading toward Manitoba quickly. Forest pests such as the emerald ash borer can be transported to unaffected areas through the movement of firewood.

When you are vacationing this summer, please purchase firewood locally and leave it where you bought it.

Do not move any firewood!



Asian Long-horned beetle

Emerald
Ash Borer

STOP AQUATIC INVASIVE SPECIES

Zebra mussels (*Dreissena polymorpha*) are a Prohibited Species under The Fisheries Act. Possession and release of zebra mussels in Manitoba are illegal.

Help protect our precious lakes, rivers and wetlands by taking a few important precautions when moving watercraft, trailers, aircraft or before moving any water-based equipment and gear such as docks, nets, bait buckets, ropes, buoys, life jackets, anchors and totes between water bodies.



BEFORE LAUNCHING AND BEFORE LEAVING



1. Clean and inspect watercraft, trailer, aircraft and all water-based equipment or gear. Remove all plants, animals, mud. Rinse using high pressure hot water for atleast 2 minutes.

2. Drain all water from watercraft, equipment and gear including the motor, livewell, bilge, bait buckets and totes before transporting.

3. Dry watercraft, trailer and all water-based gear and equipment for at least five days in the hot sun, 18 days in the spring/fall, or freeze for 3 days.

4. Dispose of unwanted live bait and worms in trash and dump all water from bail buckets and totes on land away from any water body.

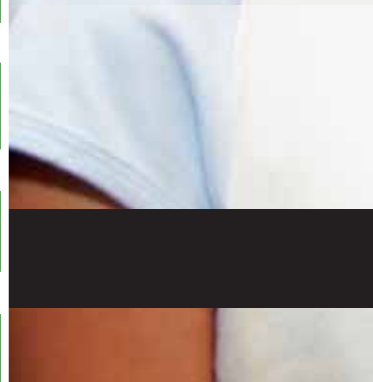


shops

at Clear Lake



shops





Welcome to Clear Lake! Whether you are looking for souvenirs or fine art, hunting for the latest style trends, or searching for unique and eclectic gifts - Clear Lake has exactly what you need. With fantastic dining options and beautiful accommodations, enjoy discovering this unique National Park townsite and the great diversity in its shops, restaurants and services!

DiscoverClearLake.com
The Official Site of Wasagaming Chamber of Commerce

Shops

at Clear Lake



The Shops at Clear Lake

DiscoverClearLake.com
 The Official Site of Wasagaming Chamber of Commerce



(A) Accommodations

- Aspen Ridge (204.848.2511) **A1**
- Cottages at Clear Lake (204.848.8489) **A3**
- Idylwylde Bungalows (204.848.2383) **A4**
- McTavish's Motel (204.848.7366) **A6**
- Mooswa Resort (204.848.2533) **A7**
- New Chalet (204.848.2892) **A8**
- Thunderbird Bungalows (204.848.2521) **A9**

(B) Information / Non-Profit

- Friends of RMNP Learning Centre (204.848.4037) **B1**
- Pinewood Museum (204.848.2810) **B3**
- Wasagaming Community Arts Centre (204.848.2993) **B4**
- Riding Mountain National Park Visitor Centre (204.848.7275) **B5**

- Riding Mountain National Park Administration Building (204.848.7275) **B6**

(C) Services

- Clear Lake Gas & Bike Rentals (204.848.2535) **C1**
- Danceland (204.848.7500) **C2**
- Frazer Studios (204.848.4015) **C3**
- Gorge Book / Coffee Shop (204.848.2868) **C4**
- Marina on Clear Lake (204.848.1770) **C5**
- McTavish's Books & Movies (204.848.7366) **C6**
- Beachcomber Laundromat (204.848.7764) **C6**

(D) Clothing & Accessories

- Boardwalk Clothing (204.848.2322) **D1**
- Chocolate Fox (204.782.0693) **D2**

- Deep Bay Clothing (204.848.2366) **D3**
- From the Earth Jewellery (204.848.1771) **D4**

- Gorge Clothing v848.2868) **C4**
- Kozy's Trends (204.848.7388) **D5**

- Peach Tree (204.848.2193) **D6**
- Pretty Cool (204.848.8432) **D7**

- Seagulls & Sandcastles (204.848.2905) **D8**
- Summer Fashions (204.848.2816) **D9**

- Sun & Sand (204.848.2446) **D10**
- Moon Lake Trading Co. (204.848.4060) **D11**

- Beachcomber Clothing Shop (204.848.7764) **D12**

(E) Food & Beverage

- Boardwalk Restaurant / Ice Cream (204.848.2322) **D1**

- Chocolate Fox (204.782.0693) **D2**
- Manos Pizza (204.848.7444) **E1**

- Subway (204.848.7523) **E2**
- McTavish's Ice Cream (204.848.7366) **A6**

- The Sugar Shop (204.848.4877) **E5**
- T.R. McKoy's Italian Restaurant (204.848.2217) **E6**

- Upper Cup (204.848.2098) **E7**
- Whitehouse Restaurant & Bakery (204.848.7700) **E8**

- Wigwam Restaurant & Lounge (204.848.7752) **E9**
- Cam's Crepes (204.848.4452) **E9**

- (F) Grocery Stores
- Clear Lake Trading Post (204.848.2366) **F1**

- The Boardwalk on Clear Lake (204.848.2322) **D1**

(G) Recreation

- Clear Lake Gas & Bike Rentals (204.848.2535) **C1**

- Clear Lake Bowling Green (204.848.4642) **G1**
- Clear Lake Tennis Courts (204.848.2649) **G2**

- Old Surrey Station Bike Rentals (204.848.7523) **G3**
- Park Theatre (204.848.2423) **G4**

(H) Giftware / Home Decor

- Bear Behind (204.848.8430) **H1**
- Moon Lake Trading Co. (204.848.4060) **D11**

- On or Under the Tree (204.761.0045) **H2**
- The Spinning Wheel Gift Shop (204.848.2423) **H3**

- The Park Bench (204.848.2822) **H4**
- Sun & Sand (204.848.2446) **D10**

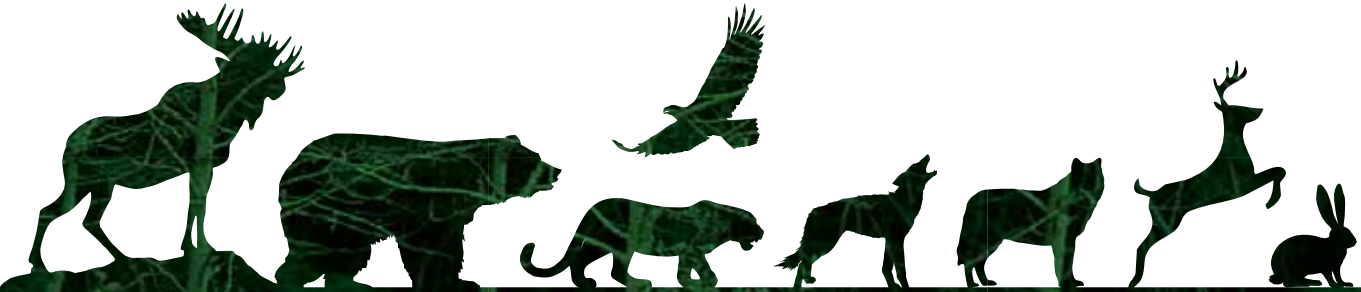
- The Nature Shop (204.848.4037) **H5**

Businesses Located outside Townsite:

- Clear Lake Golf Course (204.848.4653)
- Crooked Mountain Cabins (204.636.7873)
- Duff's Steakhouse (204.848-4653)
- Elkhorn Resort (204.848.2802)
- Trailhead Ranch (204.848.7649)
- Sportsman's Park (204.848.2520)
- Onanole RV Park & Campground (204.848.2398)
- Poplar Ridge Golf Course (204.848.2382)
- Shuttle Bug (848.0603)
- Whirlpool Road B&B (204.212.2595)
- Westoba Credit Union (204.848.7040)
- Woods General Store (204.848.2099)

Wildlife

Look out
for the usual
suspects:



Out on the trail or from your vehicle, the incredible diversity of animal species within the Park makes it a perfect destination for wildlife watchers.



Moose





Eagle



Wondering where to spot wildlife?



Pine Marten



Black Bear



Register at the Visitor Centre to join a Call of the Wild Car Caravan.



Wolf

Ask the friendly staff at the Visitor Centre or check the wildlife observation boards located in the lobby of the Visitor Centre or Administration Office for the latest sightings. Record your observations here as well.



White-tailed deer



Photo credit: Claus-Peter Ernst



Beaver



Fox



Always Keep Your Distance



Cougar

Stay safe. No matter how tame they may seem, ALL park animals are unpredictable and potentially dangerous.



Fisher



Lynx

Friends of RMNP



Promoting and providing opportunities to increase the public's awareness, appreciation and enjoyment of the natural and cultural heritage of Riding Mountain National Park.

Visit us at 154 Columbine in Wasagaming or call 204-848-4037 or visit friendsofridingmountain.ca



- Friends Learning Centre
- Nature Shop
- Junior Naturalist Program (ages 5-12)
- Critter Camp (ages 5+)
- House Concerts
- Geocaching, GPS training & kits
- Omninnik Marsh kit rentals
- Eco-Science Camp for Grade 7 & 8 students
- Park Passes / Fishing Licenses



Parks Canada official merchandise available at Friends of Riding Mountain or online at www.parkscanadashop.ca

Riding Mountain Biosphere Reserve

The Biosphere Reserve is made up of a core protected area, RMNP, and is surrounded by 15 rural municipalities. The Biosphere Reserve fosters and encourages a sustainable community-based regional economy, with high biodiversity on a rural landscape.

- www.cachingridingmountain.ca – explore the Biosphere Reserve during this annual GPS adventure
- Photo Contest – share your memories and experiences of the Biosphere Reserve and have a chance to win great prizes
- At the Farm Gate – farmer's markets and a listing of local producers and artisans in the Biosphere Reserve



For more information call 204-636-2085 or visit rnbr.ca

Meet the Artist

Unwind with friends at the "Meet the Artists" events and discover how new works of art are created.

The Deep Bay Cabin at Riding Mountain National Park was renovated by Parks Canada in 2006 to become the home of the Manitoba Arts Council's Deep Bay Artists' Residency program. Here, in the beautiful natural setting of the Park, artists reflect, experiment, and create new art.

Throughout the season the artists feature their work through the "Meet the Artists" events hosted in and around Wasagamung. Look for posters or ask at the Visitor Centre for a listing.



MANITOBA ARTS COUNCIL
CONSEIL DES ARTS DU MANITOBA

artscouncil.mb.ca/
[across-manitoba/deep-bay/](http://artscouncil.mb.ca/cross-manitoba/deep-bay/)

Visitor Safety

Water. Road. Trail.



Play it safe – and enjoy your experience!

Whether you are looking to connect with nature, experience adventure or escape from your daily routines, we want to share with you the 3 T's – Trip Planning, Training and Taking the Essentials – to make sure you stay safe and enjoy your visit.

Need to Know.



Trip Planning

Plan your route. Know the terrain and conditions. Check the weather. Always fill out a trip plan and leave it with a family member or friend – trip plans are available online www.adventuresmart.ca or at the visitor centre.

Training

Obtain the knowledge and skills you need before heading out. Know and stay within your limits.

Taking the Essentials

Carry the essentials and know how to use them. Add other equipment specific to your activity, the season and location.

- Flashlight
- Fire making kit
- Signalling device (i.e. whistle)
- Extra food and water
- Extra clothing
- Navigational/communication devices
- First aid kit
- Emergency blanket/shelter
- Pocket knife
- Sun protection

What to do if you get lost?

Don't panic. Stay calm and be positive

Stay put. It reduces time and area the searchers are looking for you

Seek Shelter. Protect yourself from the elements, stay warm and dry

Signal for help. Think BIG, Think CONTRAST, Think 3's

Did you know?

Fishing.

A Riding Mountain National Park fishing license is **required** to fish in park waters.

Leave it for others to enjoy.

Take **nothing** but photos and leave nothing but your footprints.

Backcountry.

A backcountry permit is **required** for overnight backcountry visits. Fees apply.

Protect your pets.

Wild animals roam free in National Parks. Keep your pets on a leash and supervised so that they do not harass wildlife, provoke attacks or endanger people. Please be courteous and clean up after your pets.

Safety registration

Parks Canada offers a Safety Registration service for people engaging in potentially hazardous activities.

***Reminder: If you register yourself "out," then you must – by law – register yourself back "in" to prevent an unnecessary and costly search.**



2014

Riding Mountain Photo Contest



Themes

1. Nature
2. Wildlife
3. People in the Park

Prize

First place prize package includes a Riding Mountain National Park Annual Family Pass, and the first place photo will appear in the Park's *2015 Visitor Guide*.

Eligibility

Contest open to everyone, including professional photographers. There is also a Special Junior Photographer category.

For Full Details

Visit friendsofridingmountain.ca, or inquire at the Nature Shop in the Visitor Centre, or the Friends Learning Centre at 154 Columbine in Wasagaming.

Entry deadline:
December 7, 2014

Last year's Grand Prize winner: Garth Brown



Last year's finalists

People in Park

Carly Dow



Wildlife

Sandy Black



Nature

Wendy Erlendson



Junior

Madi Boulanger

FURTHER READING



Parkland Tourism Association
1-888-528-6484
parklandtourism.com




Riding Mountain Biosphere Reserve
204-636-2085
rmbrc.ca




Keeseekoowenin Ojibway First Nation
204-625-2043
keeseekoowenin.com




Friends of RMNP
204-848-4037
friendsofridingmountain.ca




Travel Manitoba
1-800-665-0040
travelmanitoba.com




Tourism Westman
1-866-234-8687
tourismwestman.ca




Wasagaming Chamber of Commerce
204-848-2742
discoverclearlake.com




City of Dauphin
1-877-566-5669
tourismdauphin.ca




Riding Mountain Seasons of Manitoba
riding-mountain.ca



Contact Information

Riding Mountain National Park

Toll-Free 1-888-773-8888
1-204-848-PARK (7275)
Hearing impaired,
TTY 1-866-787-6221
rmpn.info@pc.gc.ca
parkscanada.gc.ca/riding

Wasagaming Campground Reservations

Toll-Free 1-877-737-3783
1-877 (RESERVE)
reservation.parkscanada.gc.ca

Emergency 911

Police | Fire | Ambulance

Royal Canadian Mounted Police (RCMP)

1-204-848-2442

24-Hour Park Emergency Service

Visitor safety, wildlife & park enforcement

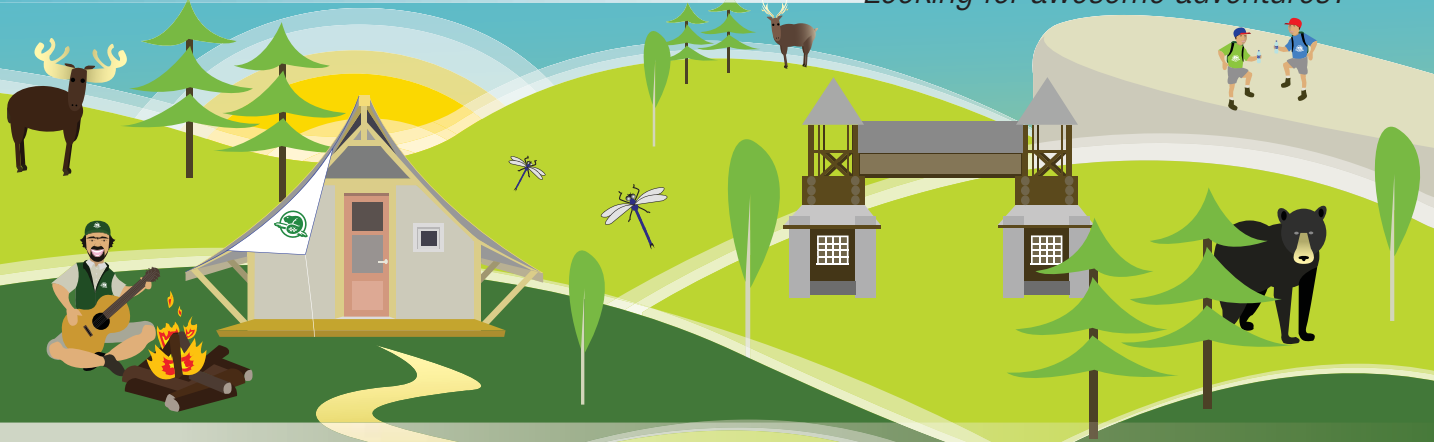
Toll-Free 1-877-852-3100

Like us on facebook.com/RidingNP
Follow us on twitter.com @RidingNP
Visit us at parkscanada.gc.ca/riding





Looking for awesome adventures?



OTENTik AND WASAGAMING CAMPGROUND RESERVATIONS
1-877-737-3783 • reservation.parksCanada.gc.ca

Distances to Wasagaming

From: (in hours)

- Brandon (1)
- Grand Forks (5)
- Minot (3.5)
- Peace Gardens (2)
- Regina (4.5)
- Saskatoon (6)
- Winnipeg (2.75)
- Yorkton (2.5)

