



# **Attention Boaters!!**

## **Watercraft Engine Requirements**



**Parks Canada would like to thank all boaters for their cooperation in this initiative. Together, we have achieved over 95% compliance with the emissions reduction program.**



Parks  
Canada

Parcs  
Canada

Canada

*Parks Canada and its partners are committed to protecting our environment and the ecological integrity of our national parks and national marine conservation areas. As a result of public consultation, a decision was made by Parks Canada in 2001 to move towards protecting park waters by only permitting cleaner marine motors. In order to reduce emissions within Riding Mountain National Park of Canada, all internal combustion marine outboard motors used within the Park must be either 4-stroke or direct injected 2-stroke engines.*

### **Accepted Outboard Motors**

- Four-stroke
- Direct fuel injected two-stroke (Note: oil injected motors do not necessarily comply)
- New low emission technologies will be assessed on a case-by-case basis as they become available



### **Lasting Benefits**

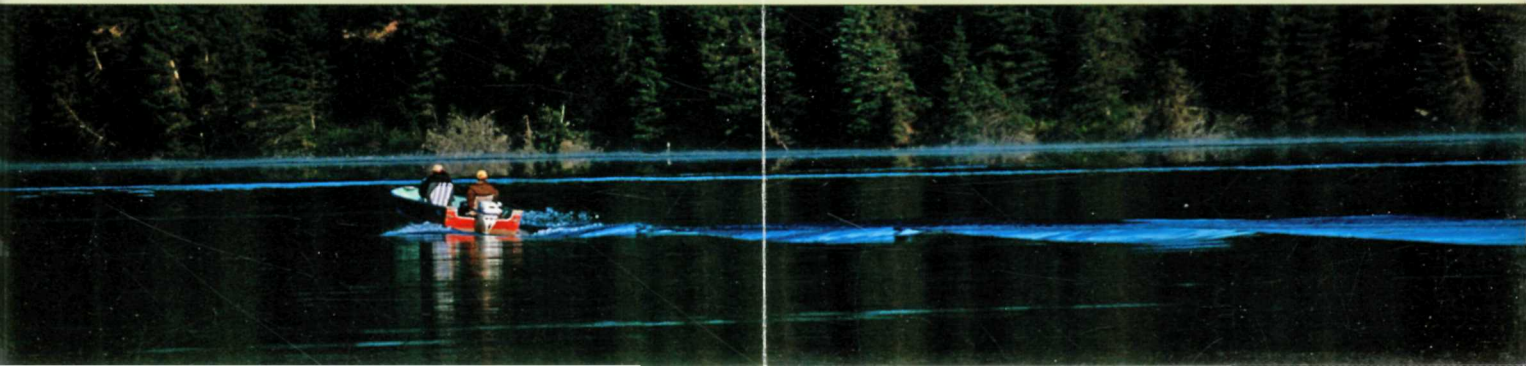
- Boaters will benefit from less fuel consumption and can take pride in keeping our waters clean for future generations.
- Riding Mountain's lakes will be healthier and will continue to support sustainable fish and aquatic populations.
- Park visitors and residents will enjoy cleaner water for drinking and recreation.

### **Compliance and Monitoring**

- Park staff will be conducting inspections at various times and locations throughout the summer.
- Boaters will be asked to provide basic information to show that their watercraft has a motor that meets the emission standards.
- After inspection a compliance sticker can be affixed to the motor. This will help avoid subsequent inspections or delays.
- Should any motor be found non-compliant, the operator will be formally advised to take action to comply and may be required to immediately remove the watercraft from all park waters. Continued non-compliance may result in prosecution.
- Park Wardens will be enforcing the watercraft engine requirements in Riding Mountain National Park of Canada.



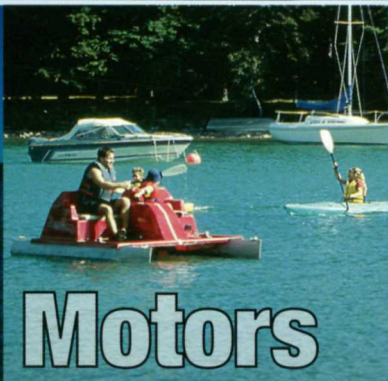
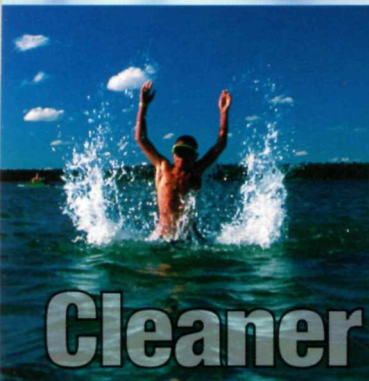
**For more information or questions about watercraft engine requirements or motor inspections, please contact us at 204 848-7275.**







- Older outboard motors, particularly conventional 2-strokes, can release up to 30% of their fuel unburned into the water or air via exhaust.
- Marine motors that produce lower emissions contribute to a cleaner and healthier environment.



# Cleaner Motors Cleaner Water

