



Note: Elevation change means cumulative elevation gain for a return trip.

**ROADSIDE ATTRACTIONS**

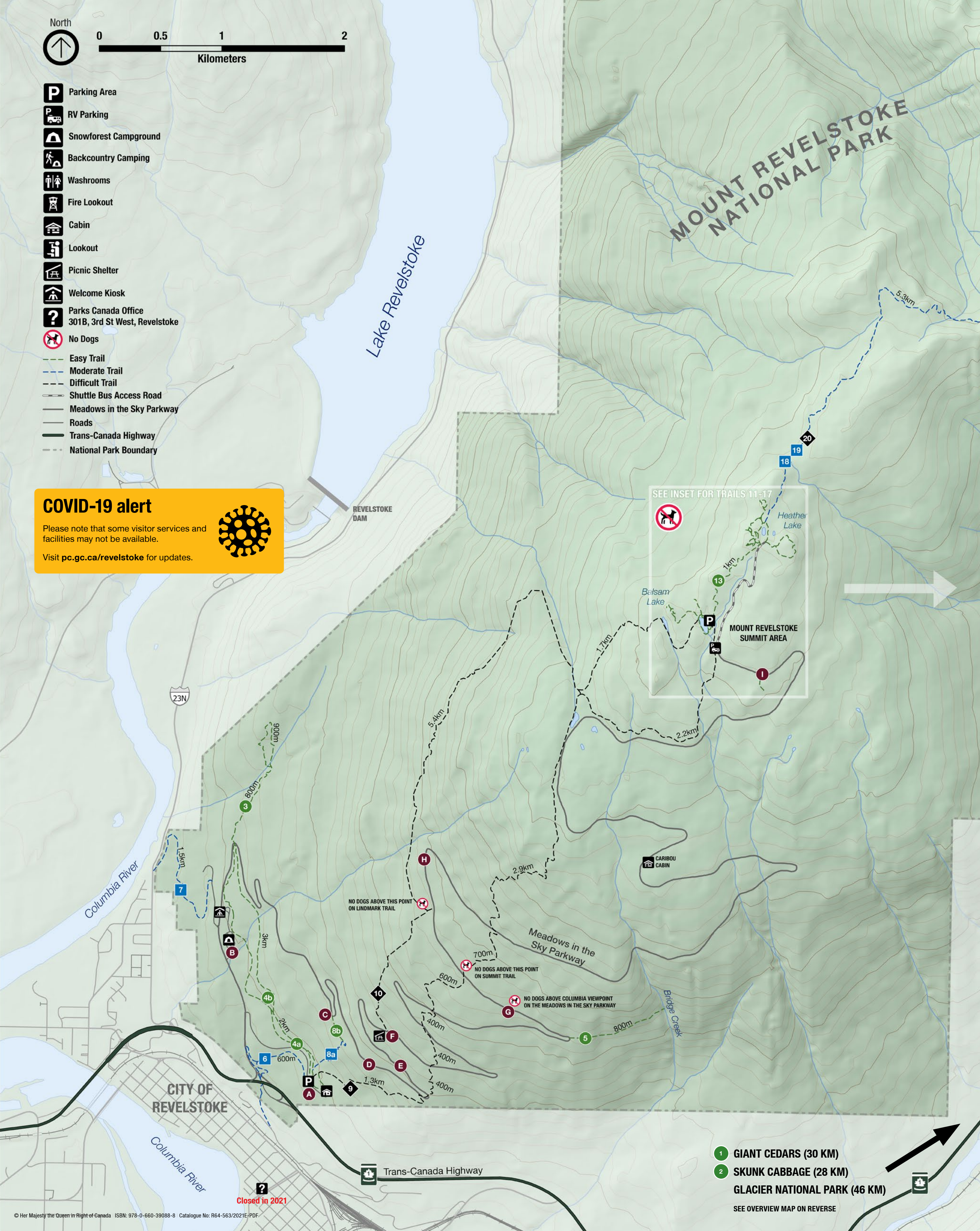
- 1 Giant Cedars Boardwalk**  
500 m (loop) | 28 m elevation change | 15 min  
Boardwalk with stairs | Gently rolling
  - 2 Skunk Cabbage Boardwalk**  
**Boardwalk currently closed**  
Picnic area | Flat to gently rolling
- LOWER MOUNT REVELSTOKE**
- 3 Inspiration Woods**  
2.5 km (loop) | 133 m elevation change | 1 hr  
Natural trail | Gently rolling with short, steep sections
  - 4a Soren Sorensen**  
a) 2 km (loop) | 21 m elevation change | 30 min  
b) 5 km (loop) | 63 m elevation change | 1.5 hrs  
Natural trail | Gently rolling with short, steep sections
  - 4b Soren Sorensen**
  - 5 Broken Bridge**  
2 km (return) | 40 m elevation change | 40 min  
Natural trail | Gently rolling with short, steep sections
  - 6 Mount Revelstoke**  
2.6 km (return) | 103 m elevation change | 1 hr  
Paved and natural trail sections | Steep
  - 7 23 Connector**  
4.4 km (return) | 116 m elevation change | 1.5 hrs  
Natural trail | Steep
  - 8a Nels' Knickers**  
a) 800 m (return) | 139 m elevation change | 45 min | Steep  
b) 600 m (return) | 2m elevation change | 15 min | Gently rolling  
Natural trail with stairs
  - 8b Nels' Knickers**
  - 9 Summit**  
20 km (return) | 1353 m elevation change | 6-8 hrs  
Natural trail | Steep
  - 10 Lindmark**  
15 km (return) | 982 m elevation change | 5-7 hrs  
Natural trail | Steep

**SUMMIT SHORT HIKES**

- 11 Balsam Lake**  
500 m (loop) | 8 m elevation change | 10 min  
Natural trail | Flat to gently rolling
- 12 Eagle Knoll**  
1 km (loop) | 27 m elevation change | 30 min  
Natural trail | Gently rolling with short, steep sections
- 13 Upper Summit**  
2 km (return) | 91 m elevation change | 40 min  
Natural trail | Steep
- 14 Fire Lookout**  
500 m (return) | 11 m elevation change | 10 min  
Paved and natural trail | Steep
- 15 Koo Koo Sint**  
1 km (loop) | 28 m elevation change | 20 min  
Natural trail | Gently rolling with short, steep sections
- 16 Heather Lake**  
400 m (loop) | 10 m elevation change | 10 min  
Natural trail | Flat to gently rolling
- 17 First Footsteps**  
750 m (loop) | 24 m elevation change | 20 min  
Natural trail with stairs | Gently rolling with short, steep sections

**SUMMIT DAY HIKES**

- 18 Miller Lake**  
11.6 km (return) | 405 m elevation change | 4-6 hrs  
Natural trail | Gently rolling with short, steep sections
- 19 Eva Lake**  
14.2 km (return) | 465 m elevation change | 5-7 hrs  
Natural trail | Gently rolling with short, steep sections
- 20 Jade Lakes**  
18.8 km (return) | 714 m elevation change | 6-8 hrs  
Natural trail | Rolling with long steep sections

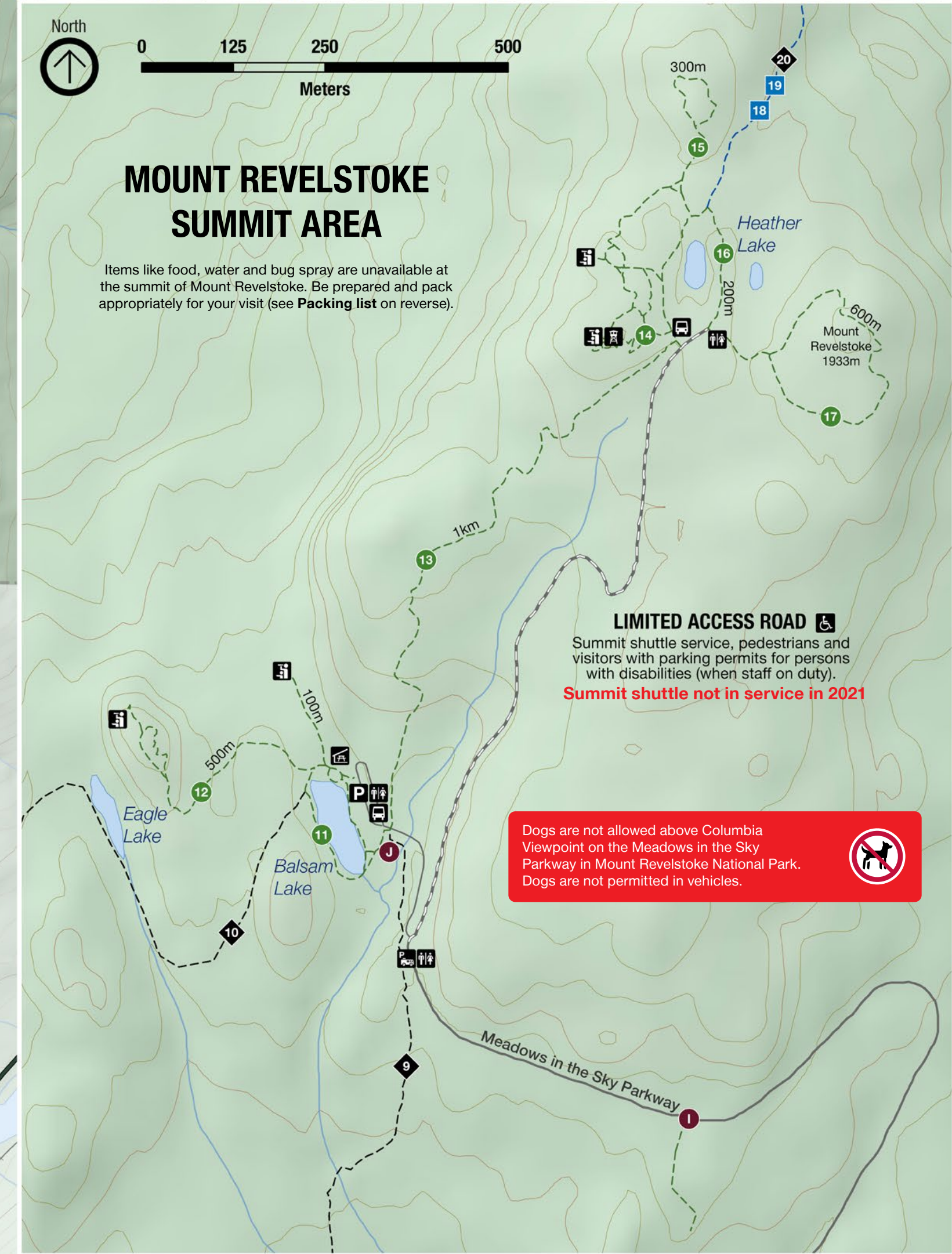


**COVID-19 alert**

Please note that some visitor services and facilities may not be available.

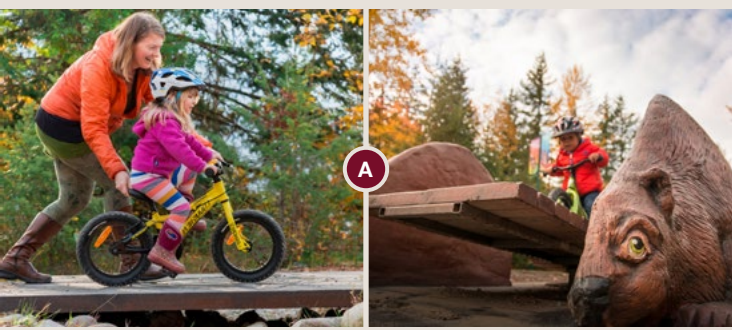
Visit [pc.gc.ca/revelstoke](http://pc.gc.ca/revelstoke) for updates.

SEE INSET FOR TRAILS 11-17

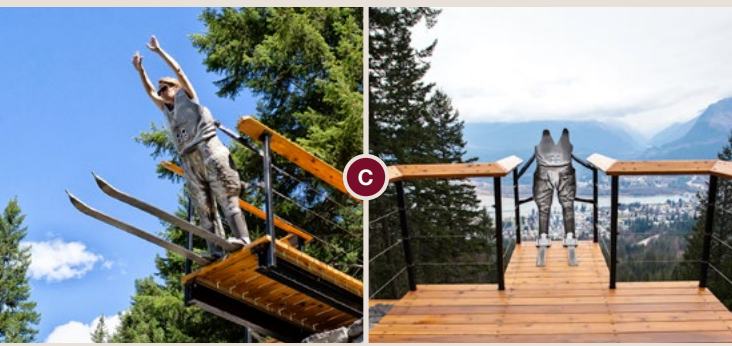


- 1 GIANT CEDARS (30 KM)**
  - 2 SKUNK CABBAGE (28 KM)**
  - GLACIER NATIONAL PARK (46 KM)**
- SEE OVERVIEW MAP ON REVERSE

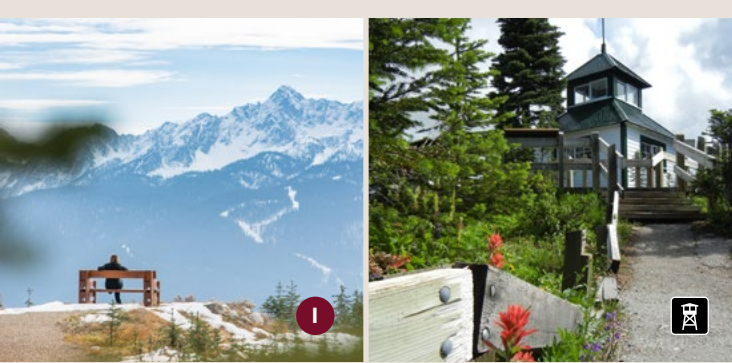
As you travel along the Meadows in the Sky Parkway to the summit of Mount Revelstoke, take advantage of many opportunities to stop and explore.



- A NELS NELSEN HISTORIC AREA KM 0.5**  
Beaver Lodge Kids' Bike Park is located at the Nels Nelsen Historic Area parking lot.
- B SNOWFOREST CAMPGROUND KM 1**  
Serviced campground with walk-in and drive-through sites. MicroCubes are also available. See **Camping** on reverse.
- C NELS NELSEN VIEWPOINT KM 4**  
Park at the upper trailhead and walk a short trail to the historic ski jumping site and interactive exhibit.



- D REVELSTOKE VIEWPOINT KM 5**  
Paved pullout with a view of Revelstoke. Enjoy the view from your vehicle or a small paved area with a bench.
- E RAINFOREST VIEWPOINT KM 6.5**  
This gravel pullout overlooks a mountainside creek. Watch for amphibians like the Coeur d'Alene salamander.
- F MONASHEE PICNIC AREA KM 7.5**  
A flat paved trail leads to a picnic area and viewpoint of the Monashee Mountains. Stone steps access a picnic shelter stocked with firewood. Outhouses available in parking area.
- G COLUMBIA VIEWPOINT KM 11.5**  
Pull-through paved viewpoint with views of the Columbia Valley. Includes small viewing area and benches.
- H EAGLE PASS VIEWPOINT KM 13**  
Paved pullout and picnic area overlooking Eagle Pass and the Trans-Canada Highway. Outhouses available.
- I PANORAMA POINT KM 24**  
A 300 m gravel trail leads to a bench overlooking the confluence of the Illecillewaet and Columbia river valleys.



- J BALSAM LAKE PICNIC SHELTER KM 24.5**  
This picnic shelter has a wood stove and is stocked with firewood for day use. See **Picnic shelters** on reverse.
- SUMMIT SHUTTLE BUS KM 24.5**  
Not in service in 2021.
- HISTORIC FIRE LOOKOUT KM 26**  
This heritage building is located at the summit of Mount Revelstoke. See **Trail information** on reverse.

**VEHICLE RESTRICTIONS**

The Meadows in the Sky Parkway is narrow and has tight switchbacks. Some vehicles are not permitted:

- Buses and Class A motorhomes over 7.9 metres (26 feet)
- Towed trailers or towed vehicles. These may be dropped off at the Nels Nelsen Historic Area (A on map).
- **Parking at the summit area is extremely limited. Arrive early to avoid disappointment.**