

Activity Guide & Trail Map 2025



*This photo was taken with a zoom lens. Please stay at least 30 m from elk.
Aussi disponible en français.

Interpretive Programs

There are free public programs daily in July and August and weekends in June and September! Get the detailed public program schedule from the Visitor Centre.

For information on paid programs for groups, contact the interpretation team at interpretationprincealbert@pc.gc.ca or 306-663-4510.



Picnic and Beach Areas

HEAD FOR THE BEACH!

Sandy beaches, picnic shelters and fire pits are ready for your enjoyment. Pack your picnic and swimsuits before spending the day with friends and family at:

- Waskesiu Beach
- Birch Bay
- South Bay
- Paignton Beach
- Point View
- Trippes Beach

Look for the Picnic Area and Picnic Shelter icon for more picnic areas and beaches in the park.

Pets are welcome!

All pets must be on leash and under physical control at all times. Dogs are allowed on most beaches, except for those with buoyed swimming areas.

Welcome | tawâw

Prince Albert National Park is located on Treaty 6 territory, the lands of the nîhihaw (Woodland Cree), nêhiyawak (Plains Cree), Dene, Dakota and the homeland of the Métis. These lands and waters have been cared for by Indigenous peoples for generations and continue to be used and protected today.

We recognize the shared responsibility for the stewardship of the land and waters. Do your part to protect this special place.

kistapînânhik ihtakwan askiy kâ-kî-masinahikâtik asotamâkiwinihk Treaty 6, askiy î-tîpîhihtahkwâw nîhihawak, nêhiyawak, Dene, Dakota, ikwa âpihtawikosisânak the Métis. askiy mîna nîpiy kanawîhihtamwak nîhihawak mîna kayâs ôta ithiniwak kâwîkîcîk ikwa kiyâpîc kwayask kanawîhihokîkîtiwa. niwâpahtinân ohcitaw poko

kita-mâmawi-kanawîhihtamahk askiy mîna nîpiy. kîsta wîchîwî kita-kanawîhihtaman ôma askiy.

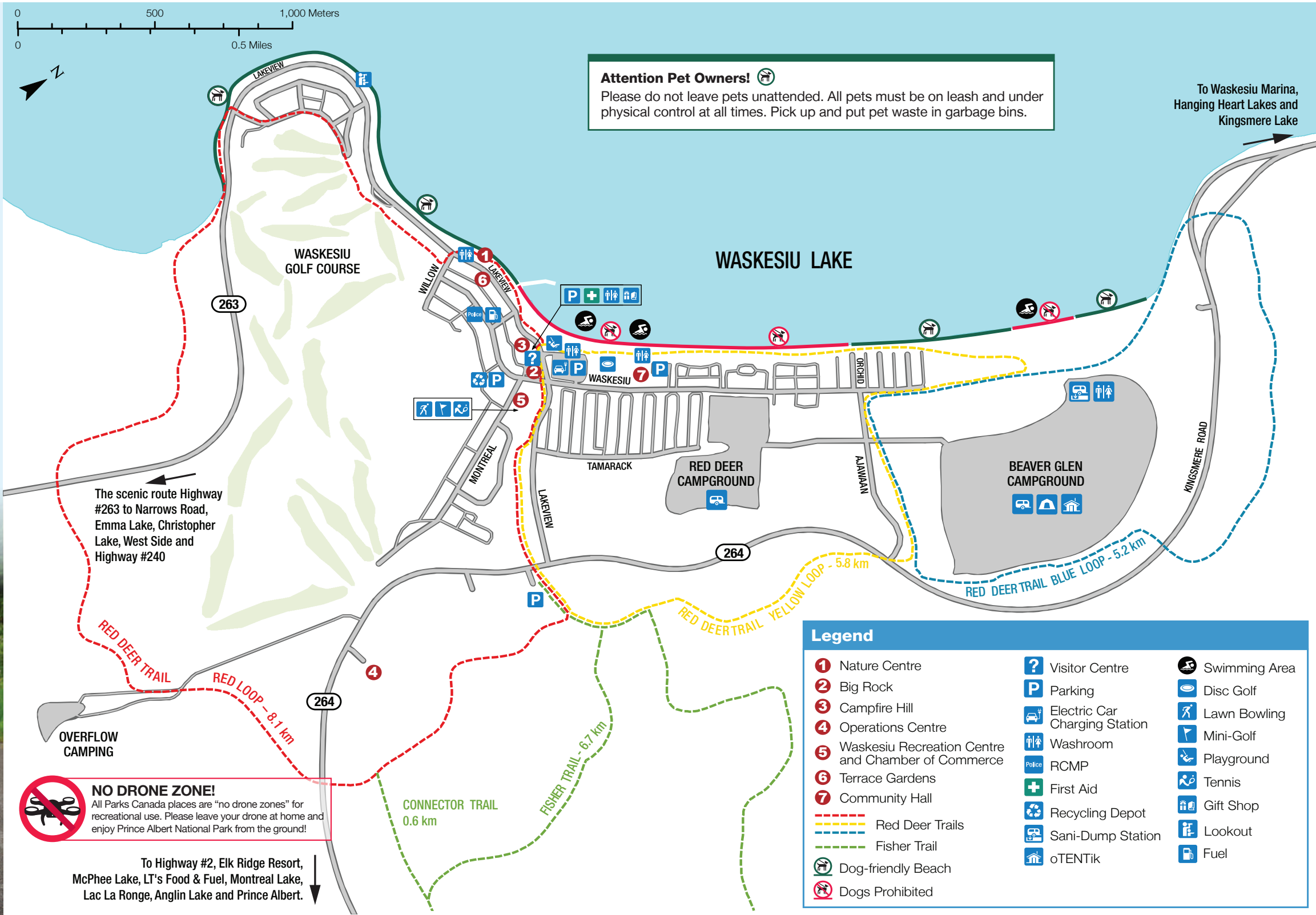
Prince Albert Tooroon not grawn piyee Li grawn bwa aykwawnima ashtay didawn Tretee Sis Li territwayr, li tayr ouschi nîhihaw (Daw li bwaw awn Cree), nêhiyawak (Li Promyee Nawsoyon), Dene, Dakota, pi la tayraen'd weekinawhk ouschi aen Michîf li moond.

Ohin li tayr pi diloo kee-pishkayimooawwn ouschi Indigene li moond poor ashpîn kayawsh ouschi pi ahkamay awpachistawn pi kenawyschikawtayw anoush.

Ninishtowinayawn ooma weechi- pishkayimooowin poor nakatouhkawtaywin li tayr pi diloo. Veechihiway chi-kenawyschikawtayk ooma kischee la plaes.



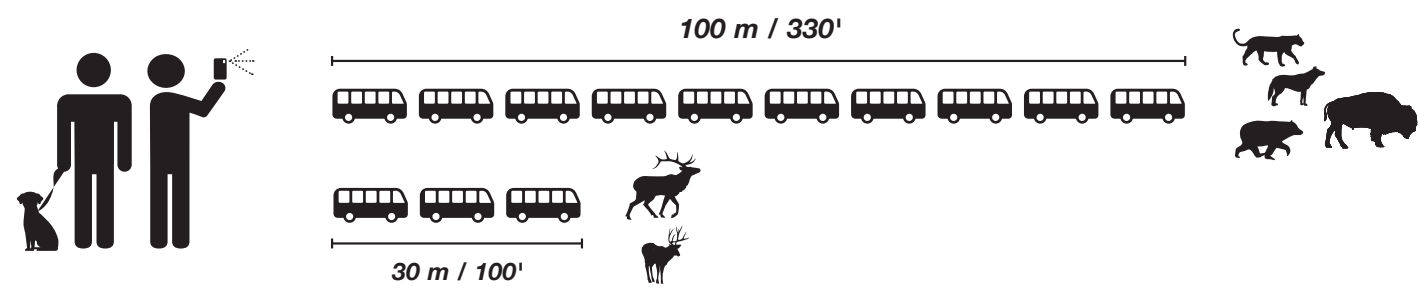
Waskesiu



Stay Safe and Protect Wildlife

- Keep a safe distance from all wildlife.** If an animal notices you and changes its behaviour by lifting its head, looking at you or listening to you, you are too close and should back away.
- Travel in groups and make noise** to let wildlife know you are nearby.
- Late summer and early fall is elk and bison mating season;** be especially aware of wildlife along trails at this time.
- If you encounter elk, moose or bison on a trail, **let them know you're there** by singing a song or whistling a tune. **Walk slowly around them at a safe distance or return the way you came.**
- Do not feed wildlife;** they have a greater rate of survival and are healthier when they eat natural food.
- Keep your pet on a leash and under physical control at all times.** Dogs can provoke defensive behaviour in bears and other wildlife.
- Know what to do when you see a bear.** Read the *Black Bear Country* brochure for more information on bears and how to prevent an encounter, available at any park facility.

Give wildlife space



Frontcountry Camping

| | FRONTCOUNTRY CAMPGROUNDS – VEHICLE ACCESSIBLE | | | | |
|---------------------|---|--|-----------------------------|-------------------------------|-----------------------------|
| | RED DEER | BEAVER GLEN | NARROWS | NAMEKUS LAKE | SANDY LAKE |
| LOCATION | Waskesiu townsite | Northern edge of Waskesiu townsite | 25 km NW of Waskesiu | 10 km S of Waskesiu | 35 km S of Waskesiu |
| NUMBER OF CAMPSITES | 161 pull-through sites | 200 electrified back-in sites, 10 oTENTikS | 75 back-in, 10 pull-through | 14 back-in, 6 walk-in sites | 25 back-in, 6 walk-in sites |
| RESERVATIONS | ✓ | ✓ | Self-registration | Self-registration | Self-registration |
| WATER | ✓ | Central tap | Central tap | | |
| POWER | ✓ | ✓ | | | |
| SEWER | ✓ | | | | |
| SHOWER | ✓ | ✓ | | | |
| FLUSH TOILETS | ✓ | ✓ | ✓ | | |
| SEWAGE DISPOSAL | | ✓ | ✓ | 12 km N | 3 km S |
| FIRE PITS | | ✓ | ✓ | ✓ | ✓ |
| PIT TOILETS | | | ✓ | ✓ | ✓ |
| SPECIAL FEATURES | Short walk to main beach | Short walk to Beaver Glen Beach | Marina close by | Non-motorized watercraft only | Boat launch and beach |

There are alcohol and cannabis restrictions in effect in frontcountry campgrounds on all long weekends. Reserve your campsite today! reservation.pc.gc.ca or 1-877-737-3783

Visit waskesiu.org/accommodations for information about local commercial accommodations.

Camping



Backcountry Camping

Campgrounds are equipped with picnic tables, pit toilets, firewood, fire pits and caches for securing wildlife-attractants.

All overnight visitors, including for random backcountry camping, must register at the Visitor Centre before leaving for the backcountry. Sites are first come, first served.

Fees: Backcountry fees apply to all overnight backcountry stays.

Safety:

- Check the weather, trail and fire conditions before heading into the backcountry.
- Pack appropriate equipment, extra drinking water and food in case you're out longer than anticipated.
- Before your trip, please read the *Black Bear Country* brochure.
- Take navigation tools and a first aid kit.
- REMEMBER – cell phone coverage varies throughout the park. Do not rely on it.
- Share a trip plan with trusted friends or family.
- For additional resources: AdventureSmart.ca

Contact Information

Visitor Centre - Open Daily

1-306-663-4522
princealbertinfo@pc.gc.ca
parks.canada.ca/princealbert

Toll-free National General Information Line:
1-888-773-8888

Reserve your campsite:
1-877-737-3783
reservation.pc.gc.ca

Stay safe and be AdventureSmart on the trails or water:
Visit adventuresmart.ca for tips to stay safe on your trip.

Connect with us!

@ParksCanada_SK
facebook.com/PrinceAlbertNationalPark



Stay informed about upcoming events, important park updates or conservation work at Prince Albert National Park. Get the latest news straight to your inbox with the click of a button. Subscribe to our newsletter today!

Emergency

Dial 9-1-1 RCMP, Fire, and Ambulance
1-877-852-3100 For all other emergencies (Parks Canada Dispatch)



MAKE MEMORIES HERE THIS WINTER!

Prince Albert National Park is open for winter adventures. Explore the beauty of snow-covered forests and frozen lakes on skis or snowshoes. Park entry fees apply year-round. Contact the Visitor Centre to plan your visit today!

Help Protect Park Waters

Mandatory Aquatic Invasive Species (AIS) Watercraft Certification Permit

All watercraft must have a *mandatory AIS watercraft certification permit* before entering Prince Albert National Park waters to help stop the spread of AIS.

This includes motorboats, canoes, kayaks, stand-up paddleboards, wind surfing boards and rowboats.

Pick up your free AIS watercraft certification permit at an entry gate, the visitor centre, marina or a self-certification station at a boat launch or day-use area.

Watercraft used outside of Saskatchewan in the past 45 days must undergo inspection and/or decontamination to meet permit conditions.



parks.canada.ca/princealbert-aquatic

Make clean, drain, dry a habit everywhere you go! Clean, drain and dry all watercraft and water-related gear, including trailers, fishing gear, personal flotation devices, wetsuits, paddles and beach toys.



Trails



Hiking

Want to learn more about the natural world around you? Take a self-guided tour with a brochure available at the Treebeard trailhead, learn from the interpretive exhibits at Boundary Bog or attend an interpretive program.



Biking

On trails, eBikes need to be in the pedal assist mode and must not have a switch to select motor only mode.

Highway #263 lends itself naturally to bike touring. This quiet, paved roadway is jam-packed with scenic diversity. Wear bright clothing and make yourself visible to motorists.

On roadways, eBikes can be in motor only mode. Provincial laws must be followed. For more information, please consult sgi.sk.ca/recreational-vehicles.



Fishing

Prince Albert National Park fishing licenses are available for purchase at the Visitor Centre, entry gates, campground kiosks or any of the marinas.

Contact the Visitor Centre to learn more about lake trout fishing regulations and to pick up your lake trout endorsement tag.



Horseback Riding

Escape the hustle and bustle of the daily grind along one of our horse-friendly trails.

Bring your own horse or contact the Visitor Centre for information on horseback riding outfitters in the surrounding area.

TRAIL SAFETY

- Register at the Visitor Centre prior to all overnight backcountry trips.
- Trails and beaches are not patrolled; use them at your own risk.
- Watch for slippery or broken boardwalk on trails.
- Respect area and trail closures.
- Wildlife encounters are possible; please use caution.
- Always take emergency gear! Be Adventure Smart: AdventureSmart.ca

Paddling



The best seat in the house! Your canoe or kayak provides a unique vantage point to watch wildlife and explore the water. It is a great low-impact way to discover the natural wonders of the park. Higher water levels in spring make it the perfect time to enjoy the rivers. Paddle routes are not maintained; use them at your own risk.

| Day Paddles | | |
|---------------------|---|------------------|
| NAME | ROUTE | LENGTH (one way) |
| AMISKOWAN LAKE | Amiskowan Lake to Shady Lake | 1-2 hours |
| KING ISLAND | Trippes Beach to King Island | 0.5 hours |
| WASKESIU RIVER | Waskesiu River to Waskesiu Lake | 0.5 hours |
| SPRUCE RIVER | Spruce River on Hwy #263 to Anglin Lake | 1.5 hours |
| HANGING HEART LAKES | Hanging Heart Lakes to Crean Lake | 3 hours |

| Overnight Paddles | | |
|--|--------------------------------|------|
| Remember to register at the Visitor Centre for all overnight stays | | |
| NAME | ROUTE | DAYS |
| BAGWA | Kingsmere Lake/Bagwa route | 2 |
| GREY OWL'S CABIN | Kingsmere Lake/Ajawaan Lake | 2-3 |
| CREAN LAKE | Hanging Heart Lakes/Crean Lake | 2-3 |
| TIBISKA LAKE* | MacLennan River/Tibiska Lake | 3-4 |

*Random backcountry; no services available.

Legend

- Hiking
- Designated Cycling Trail
- Horses permitted on trail
- Lookout
- Viewing Tower
- Toilets
- Self-guided Trail
- Easy
- Moderate
- Difficult

The Scenic Route Highway #263

(paved, no shoulders)

1 Shady Lake Trail

1.7 km loop

Hike down towards the lake in a counter-clockwise direction. East of the lake, a 1 km spur brings you to the 15 m high Height-of-Land Tower.

2 Height-of-Land Tower

Staircase, 60 m one way

Climb the 15 m tower for a view of Shady Lake and the mixed-forest canopy. This tower sits on the divide between the Churchill and Saskatchewan river systems.

3 Spruce River Highlands Trail

8.5 km loop

Ascend the path for 0.7 km and climb to the top of a 10 m tower. Below, the Spruce River meanders through a characteristically glacial landscape. The hills of the aspen parkland are radiant in their fall foliage. The trail then passes through rolling terrain, providing viewing opportunities of Anglin Lake.

4 Freight Tait Springs Trail

2 km one way

Early freighters stopped at this natural spring to rest and replenish water supplies. The spring water spills over its banks and flows onward to the Spruce River. The iron-rich springs are interesting to explore but take care not to harm this sensitive area.

5 Elk Trail

Trailhead to Fish Lake 13 km one way

Trailhead to Camp Lake 15 km one way

Walk through tall aspen stands, see views of Sandy (Halkett) Lake, and discover small wilderness lakes.

Cookson Road

(gravel, narrow, no shoulders, hills & curves)

6 Hunters Trail

7.3 km loop

On this sandy looped trail you will experience the rejuvenating effects of forest fire on the landscape.

Valleyview Trail Network

7 Valleyview Trail

The following are exploration options. The trails provide access to fescue grasslands where free-roaming plains bison are sometimes seen. **Start:** Valleyview Day Use Area

A Valleyview Lookout Trail

200 m one way

This short hike takes you to the Valleyview picnic site. Enjoy beautiful views of the Sturgeon River Valley.

B Valleyview Easy Loop

4.1 km loop

Great for families, this short trail leads users through aspen forest.

C Stoney Plain Meadow Spur

1 km one way

Follow a marked route through Stoney Plain Meadow, a native fescue grassland. Look for wildflowers throughout the summer months.

D Valleyview Moderate Loop

8 km loop

Follows the Valleyview Trail along the crest of the Sturgeon River Valley and through aspen forest. There are many great views and opportunities for random backcountry camping along the way.

E Valleyview Difficult Loop

24.5 km loop

Follows the entire length of the Valleyview Trail with many great lookouts over the Sturgeon River Valley. This trail goes through Jonassons Flats, a native fescue grassland. This trail also provides access to Sturgeon Lookout.

F Amyot Lake Trail Spur

2 km one way

Explore sedge meadows where free-roaming plains bison sometimes graze. Enjoy great waterfowl viewing opportunities and the scenic Amyot Lake.

The Narrows Road

(gravel, narrow)

8 Mud Creek Trail

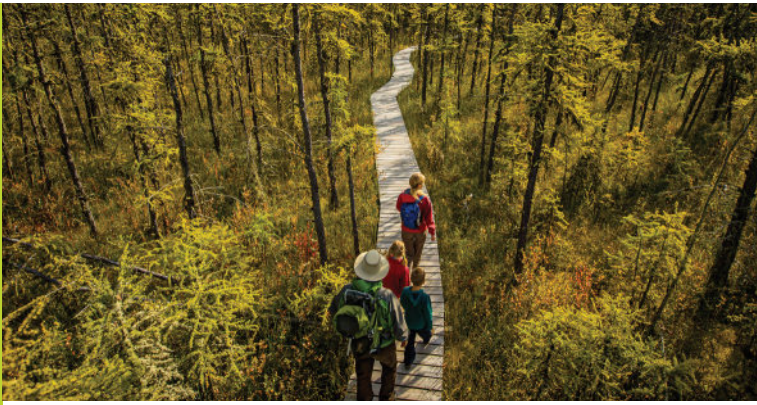
2.3 km loop

The trail skirts the lake and then follows Mud Creek. A beaver lodge and dam can be seen on the creek. In the spring, spawning fish attract black bears to the area.

9 Treebeard Trail

1.2 km loop

Ascend the steep, winding trail through a white spruce and balsam fir forest. The trees along this path are among the oldest and largest in the park. As you descend, watch for a spur to the right. It leads to a small, fern-edged creek, dark and cool.



Kingsmere Road

(first 15 km paved with narrow shoulders, last 17.5 km gravel, no shoulders)

10 Waskesiu River Trail

First 0.5 km

Remaining 2 km

From the parking lot, walk towards the river and across the pedestrian bridge. The trail parallels the rock-filled river for 0.5 km before leaving the river's north shore to loop through aspen and spruce forests and a sedge meadow.

11 Narrows Peninsula Trail

3 km loop

This trail passes through a variety of habitats following the shore of Waskesiu Lake. Of particular interest is a spectacular fern bed, luxuriant and green in the early summer. In the 1880s a fur trade post was set up on the point by an independent trader.

12 Kingsmere River Trail

1.5 km one way, staircase

The trail crosses the river and follows a rail portage, then passes through a spruce forest and ends on the east side of the Southend Campground on Kingsmere Lake.

Southend

1.5 km one way

13 Grey Owl Trail

19.9 km one way

The trail follows the eastern shoreline of Kingsmere River until you reach a junction at 0.3 km. The trail to Grey Owl's cabin branches to the right. Kingsmere Lake becomes visible 1.5 km from this junction. From there, continue east along the shoreline.

Westwind

3.3 km one way

Chipewyan Portage

6.7 km one way

Sandy Beach

12.8 km one way

Northend

16.8 km one way

Grey Owl's Cabin

19.9 km one way

Highway #264

(paved with shoulders)

14 Boundary Bog Trail

2.2 km loop

Boundary Bog is an excellent representation of the many black spruce bogs that exist in the park.

15 Red Deer Trail

Three loops totalling 19.1 km

Red Loop

8.1 km

The Red Loop takes you through a variety of habitats along the lakeshore and through the rolling hills south of Waskesiu. This trail starts in the townsite.

Yellow Loop

5.8 km

The Yellow Loop takes you through the Waskesiu Community Fuel Break, and back along the lakeshore.

Blue Loop

5.2 km

The Blue Loop takes you around Beaver Glen Campground, through the rolling hills north of Waskesiu, then back along the shore of Waskesiu Lake. If you are walking, you may choose to leave the trail and walk on the beach from Kapisiw Bungalows to Orchid Street.

16 Fisher Trail

6.7 km

Scenic and close to Waskesiu, this trail is great for hiking or biking through mixed woods, aspen stands and alongside black spruce muskeg.

Stop invasive species in your tracks by using the Boot Cleaning Stands located at the following trailheads:

- Grey Owl Trail
- Spruce River Highland Trail
- Valleyview Trail
- Boundary Bog Trail

GET YOUR DISCOVERY PASS AT THE VISITOR CENTRE

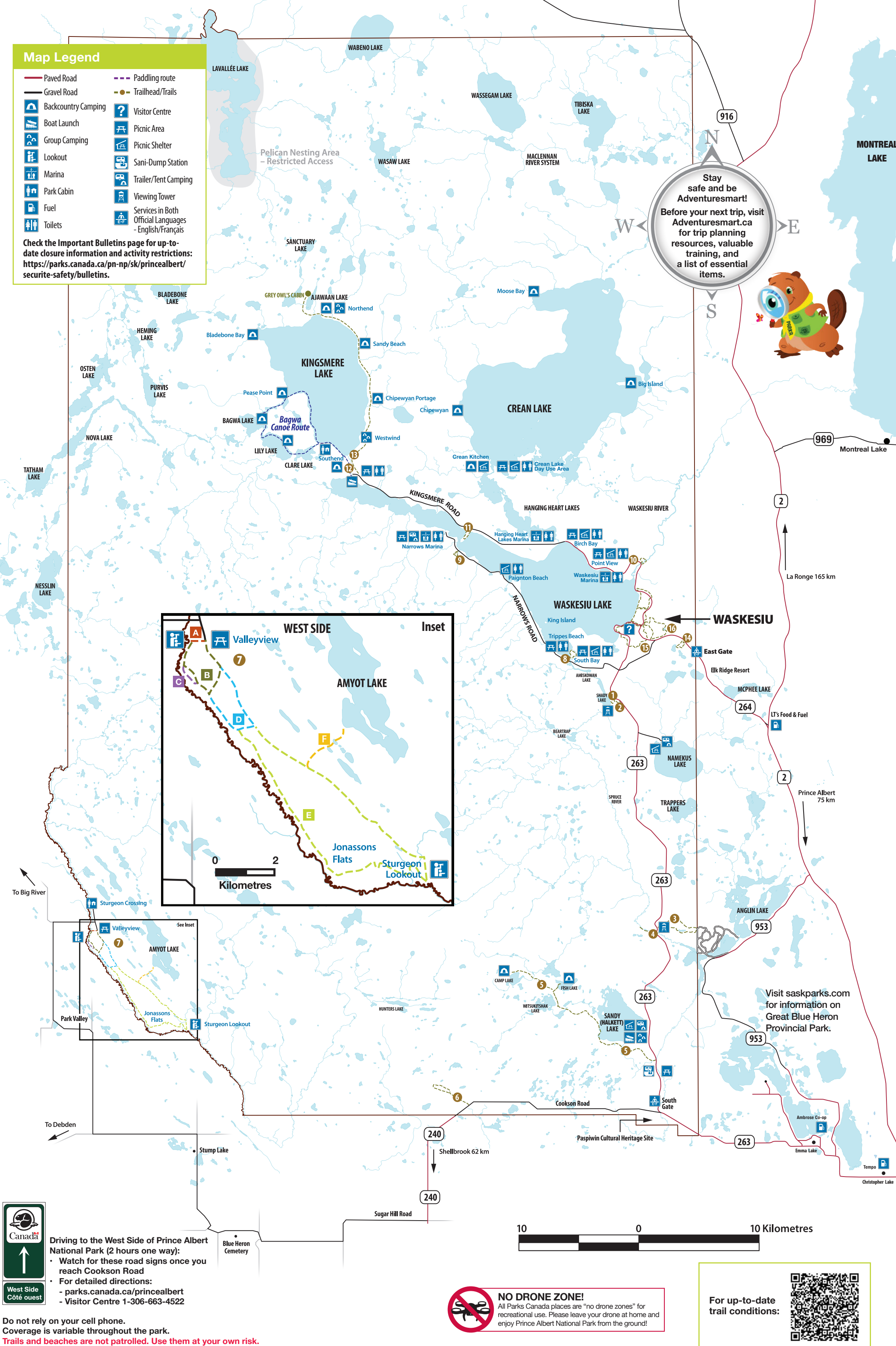
The Discovery Pass is your gateway to history, nature, and adventure. It provides unlimited admission for 12 full months at over 80 Parks Canada places.



Map Legend

- Paved Road
- Gravel Road
- Backcountry Camping
- Boat Launch
- Group Camping
- Lookout
- Marina
- Park Cabin
- Fuel
- Toilets
- Paddling route
- Trailhead/Trails
- Visitor Centre
- Picnic Area
- Picnic Shelter
- Sani-Dump Station
- Trailer/Tent Camping
- Viewing Tower
- Services in Both Official Languages - English/Français

Check the Important Bulletins page for up-to-date closure information and activity restrictions: <https://parks.canada.ca/pn-np/sk/princealbert/securite-safety/bulletins>.



West Side
Côté ouest

Driving to the West Side of Prince Albert National Park (2 hours one way):

- Watch for these road signs once you reach Cookson Road:
- For detailed directions:
 - parks.canada.ca/princealbert
 - Visitor Centre 1-306-663-4522

Do not rely on your cell phone. Coverage is variable throughout the park. Trails and beaches are not patrolled. Use them at your own risk. Always take emergency gear! Be Adventure Smart: adventuresmart.ca



NO DRONE ZONE!
All Parks Canada places are "no drone zones" for recreational use. Please leave your drone at home and enjoy Prince Albert National Park from the ground!

For up-to-date trail conditions:

