

Activity Guide 2017



- A DAY OF DISCOVERY**
Try the all-new interactive displays at the Nature Centre to learn about park wildlife and ecosystems as you play!
- 150 THINGS FOR CANADA'S 150TH BIRTHDAY**
Pick up the 150 Things to do in Prince Albert National Park brochure and see how many you can complete to celebrate Canada's 150th birthday!
- UNFENCED. UNEXPECTED. UNFORGETTABLE.**
Perk your ears and listen for the thundering hooves of plains bison as you hike, bike, or horseback ride along the expanded Valleyview Trail Network.
- BEACH FUN**
Bring beach toys and towels to relax at one of the seven sandy beaches with marked swim areas on Waskesiu Lake.
- FRIENDS, FAMILY AND FUN**
Join us for a year-long 150th birthday party; enjoy great festivals and events to celebrate 150 years of Canadian Confederation.

Mark Your Calendar

- July 1 Canada Day
- July 15 Waskesiu Children's Festival
- August 25 - 27 Waskesiu Lakeside Music Festival

For a full list of events, visit parkscanada.gc.ca/princealbert

Parks Canada's Infrastructure Program

When visiting or driving through Prince Albert National Park, you may encounter one or more construction zones or reduced services while work is being completed. Please plan ahead before you travel to avoid inconvenience.

Projects underway in 2017 include:

- Grey Owl Trail and site rehabilitation
- Campground revitalization
- Kingsmere Road upgrades

For more information contact the Visitor Centre and check the Prince Albert National Park Important Bulletins at parkscanada.gc.ca/princealbert

Legend

- 1 Chamber of Commerce Recreation Centre
- 2 Community Hall
- 3 Nature Centre
- 4 Operations Compound
- 5 Terrace Gardens
- The Rock
- Red Deer Trail
- Fisher Trail
- Disc Golf
- RCMP
- Dog-friendly beach
- Dogs prohibited
- First Aid
- Lawn Bowling
- Recycling Depot
- Sani-Dump Station
- Tennis
- Visitor Centre
- Washrooms
- Playground
- Ask ? staff for picnic shelter locations in Waskesiu



Visitor Centre - Open Daily

1-306-663-4522
panp.info@pc.gc.ca
parkscanada.gc.ca/princealbert @ParksCanada_SK
Toll-free National General Information Line:
1-888-773-8888

Parks Canada Campground Reservation Service:
1-877-737-3783
reservation.parkscanada.gc.ca

Emergency

Dial 9-1-1 RCMP, Fire, and Ambulance
For all other calls (Parks Canada Dispatch)
1-877-852-3100

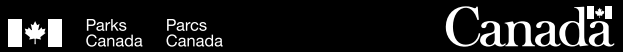


Discover **Batoche National Historic Site** only 2 hours southwest of Prince Albert National Park.
Now offering daily canoe rentals.

parkscanada.gc.ca/batoche

Canada 150 Celebrations Live Here!
Enjoy free admission to all Parks Canada places in 2017.

Aussi disponible en français.



Summer Programs

Wildlife Viewing

Front-country Camping

Backcountry Camping

Picnic and Beach Areas



Get the 2017 Summer Program from the Visitor Centre.

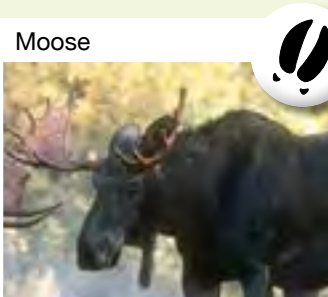
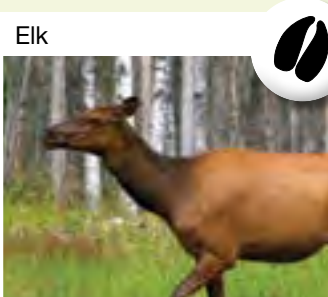
Top 5 Programs

- DISCOVER AQUATIC ANIMALS**
Explore the underwater forest and discover inhabitants that prefer lake living.
- HONOUR TRADITIONAL WAYS**
Cook bannock over an open fire and practice your hunting skills. Learn about Indigenous tools, toys, medicine and food.
- BUILD A BISON**
Scavenge for clues to determine what happened to Booker the Bison.
- HOWL LIKE A WOLF**
Join the pack to learn about wolves and see who howls at the moon with you. This timeless tradition takes place in August.
- ART IN THE PARK**
Paint, craft and learn about the wilderness around you. A great program to help you tap into your creative side!

More Activities

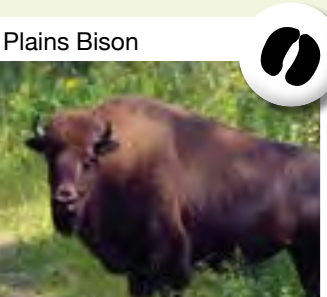
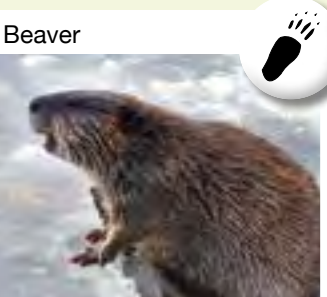
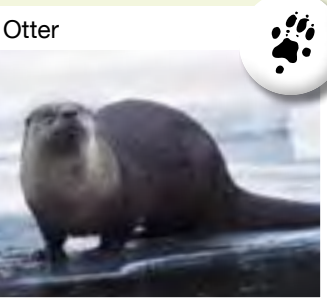
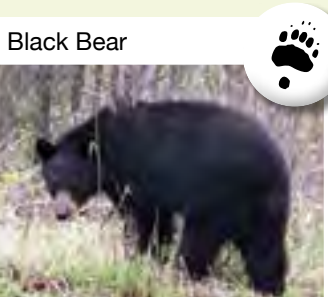
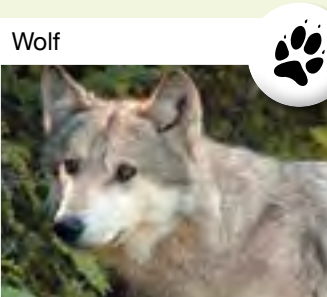
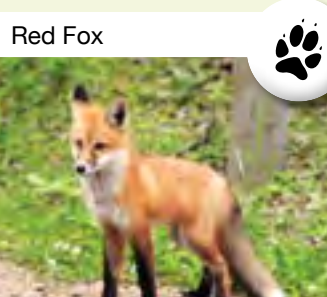
- Pick up an Xplorers or Club Parka booklet at the Nature Centre or Visitor Centre; complete 5 or more activities to receive a souvenir!
- Download the My Photos Mission app and snap pictures as Parka helps you explore the park.
- Take advantage of free entry and explore the park in a new season; Prince Albert National Park is open year-round!

Program and Event Details
parkscanada.gc.ca/princealbert or wwsask.com



Wildlife Viewing Tips

- Dawn and dusk are the best times to view wildlife. During summer, many animals escape the midday heat by staying among the trees.
- Get wet! Moose and waterfowl are active in rainy weather.
- Be patient! Stop and look around, kick back and wait to see what will wander by.



Stay Safe and Protect Wildlife

- Keep at least:**
 - three bus lengths (30 metres/100 ft) away from elk, moose and bison
 - ten bus lengths (100metres/325 ft) away from bears
- Travelling in groups and making noise will let wildlife know you are nearby.
- Late summer and early fall is elk mating season; be especially aware of elk along trails at this time.
- If you encounter elk, moose or bison on a trail make yourself known by singing a song or whistling a tune. Walk slowly around them at a safe distance or return the way you came.
- Do not feed wildlife;** they have a greater rate of survival and are healthier when they feed on natural food.
- Keep dogs on-leash at all times.
- Read *Bear Country* and *Bison Country* brochures; available at any park facility.

Frontcountry Campgrounds - Vehicle Accessible

CAMPGROUND	RED DEER	BEAVER GLEN	NARROWS	NAMEKUS LAKE	SANDY LAKE
LOCATION	Waskesiu townsite	Northern edge of Waskesiu townsite	25 km NW of Waskesiu	10 km S of Waskesiu	35 km S of Waskesiu
NUMBER OF CAMPSITES	161 pull-through sites	200 electrified back-in sites and 10 oTENTik	87 back-in sites, self-registration	14 back-in and 6 walk-in sites, self-registration	25 back-in and 6 walk-in sites, self-registration
RESERVATIONS	1-877-737-3783*	1-877-737-3783*			
POWER	✓	✓			
WATER	✓	Central tap			
SEWER	✓				
FLUSH TOILETS	✓	✓	✓		
SHOWER	✓	✓			
SEWAGE DISPOSAL			✓	12 km N	3 km S
FIRE PITS		✓	✓	✓	✓
PIT TOILETS		✓	✓	✓	✓
SPECIAL FEATURES	Short walk to main beach	Short walk to Beaver Glen beach	Marina close by	Non-motorized watercraft only	Boat launch and beach

There is a liquor restriction in effect in all campgrounds (excluding Red Deer) on all long weekends.

* Reservation website: reservation.parkscanada.gc.ca

Contact the Waskesiu Chamber of Commerce for information on commercial accommodations 1-306-663-5410 or WaskesiuLake.ca



Pack your tent and stay at one of the 14 designated backcountry campgrounds. Enjoy all the wonders of the backcountry with the benefits of a few simple comforts. Each campground is complete with picnic tables, pit toilets, firewood, fire pits and bear-proof food caches.

Backcountry Basics

Register: All overnight visitors must register at the ? on the day of arrival. Sites are not reservable.

Fees: Backcountry fees apply where facilities and services are offered.

Safety:

- Check the weather, trail and fire conditions before heading into the backcountry.
- Pack appropriate equipment, extra drinking water and food in case you're out longer than anticipated.
- Before your trip, please read the *Bear Country* brochure.
- Take a map, compass and first aid kit.
- REMEMBER - cell phone coverage is variable throughout the park. Do not rely on it.
- For additional resources: AdventureSmart.ca

Grey Owl's Cabin

Challenge yourself with the park's most popular backcountry route. Paddle, hike or bike to where Grey Owl, one of Canada's great conservationists, once lived.

Where to Start: A 45-minute-drive from Waskesiu Lake to Kingsmere parking lot.

Trail Distance: 20 km one way (4-6 hours)

By Water: 3-5 hours and a 0.5 km portage or 3 km hike
2 hours and 3 km hike

All watercraft must use a 1km rail portage to access Kingsmere Lake. Pick up a copy of *Routes To Grey Owl's Cabin* at the ? for details. A *Bagwa Canoe Route* brochure is also available.

HEAD FOR THE BEACH!

Groomed sandy beaches, picnic shelters and fire pits are ready for your enjoyment. Pack a picnic, your swimsuit and the family and spend the day at:

- Waskesiu Beach
- Birch Bay
- South Bay
- Paignton Beach
- Point View
- Trippes Beach

More picnic areas and beaches in the park:

- Namekus Lake
- Sandy Lake
- Crean Lake
- Kingsmere Lake

Dogs are welcome!

Dogs on leash are welcome anywhere in the park except public beaches with buoyed swimming areas and where prohibited by sign.

Fishing



Remember to purchase a Prince Albert National Park fishing license.

Experience northern Saskatchewan fishing at its finest by casting into the cool waters of the park. Each lake offers a different experience, so grab the whole family and make a day of it.

Fish species found in the park:

- northern pike
- lake trout
- white fish
- walleye
- perch

Fishing licenses are available at the Visitor Centre or any of the marinas.