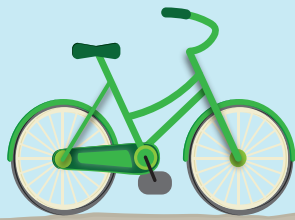







# Explore New Cycling Trails!

The cycling experience is even better with the opening of 4 km of new bike trails.



## Legend

-  Bicycle & Hiking Trail, year-round
-  Bicycle & Hiking Trail, seasonal\*
-  Main Road

\* Walking trail only during spring birding season (mid April through May)

*Remember to stay on trail to avoid ticks on you and your furry friends.*



For more information on any park programs visit [www.parksCanada.gc.ca/pelee](http://www.parksCanada.gc.ca/pelee)