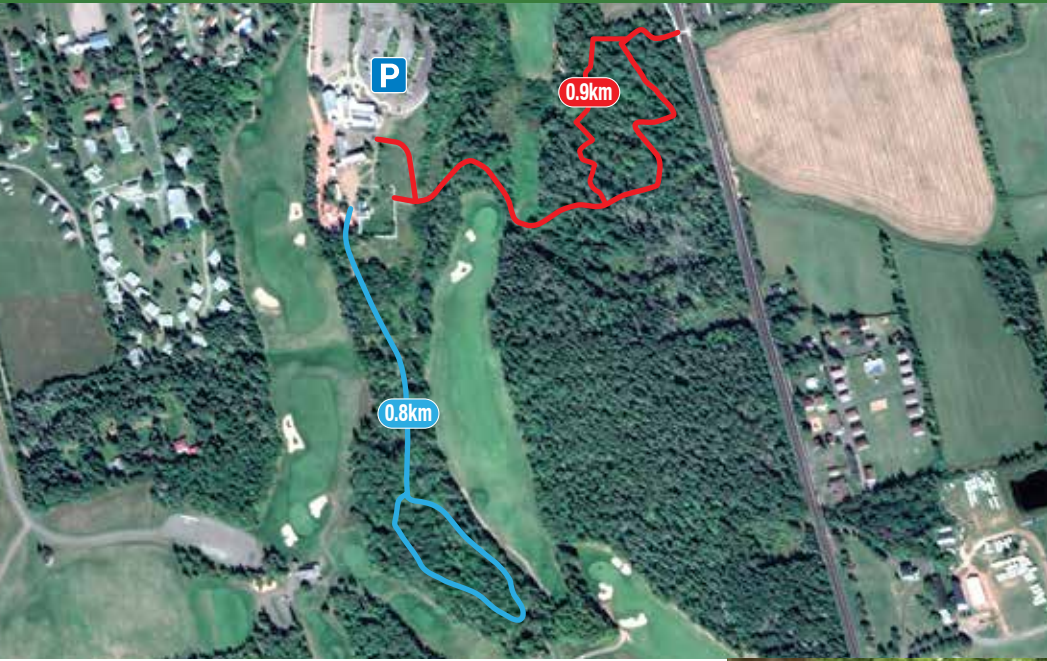


Green Gables Heritage Place



BALSAM HOLLOW


8619 Route 6, Cavendish
0.8km, Loop
Packed gravel; gently rolling with some exposed roots. Includes some stairs.
Passes through woodlands & follows a brook. Includes "Lover's Lane".

HAUNTED WOOD

8619 Route 6, Cavendish
0.9km, Loop
Packed gravel; gently rolling with some exposed roots. Includes some stairs.
Wooded trail passes by Cavendish Cemetery (resting place of LMM) and connects to Montgomery Park.



For more trail information, visit parks.canada.ca/pei-hiking.
Entry fees may be applicable at PEI National Park (parks.canada.ca/pei) and Green Gables Heritage Place (parks.canada.ca/greengables). See website for details.



Trail Guide



Bike helmets are the law.

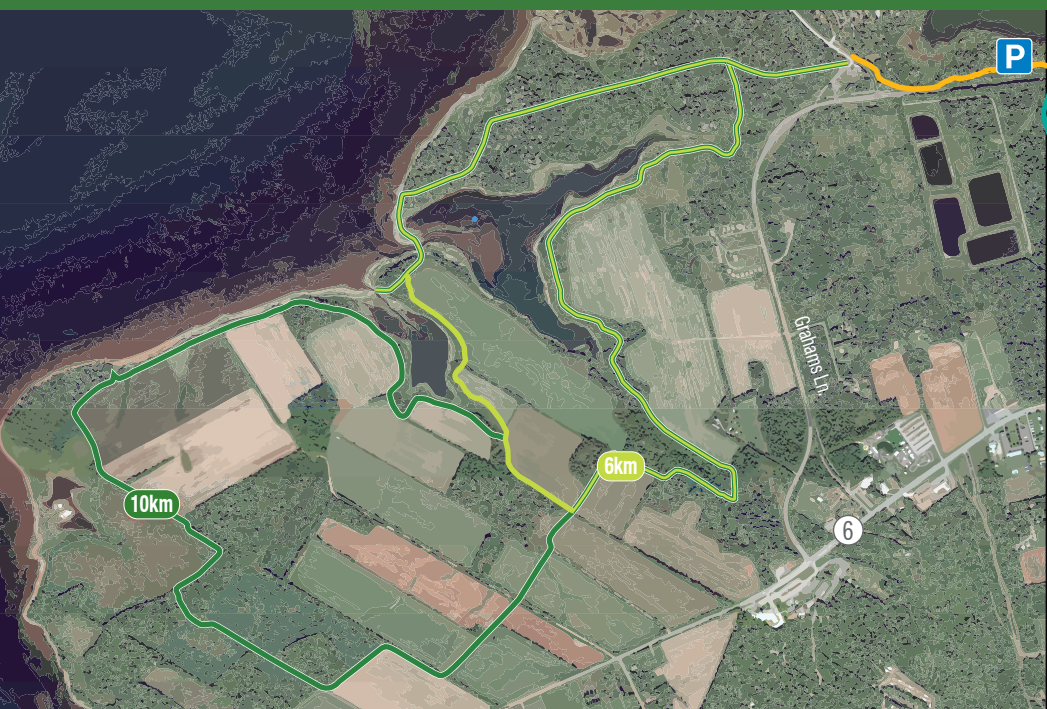


Dogs welcome on trails when leashed.

Pets not permitted on beaches between April 1 and October 15.



Homestead Trail - Cavendish



HOMESTEAD - MACNEILL LOOP

355 Grahams Lane, Cavendish
10km Stacked, Loop
Packed gravel; gently rolling with few short, steep sections, some exposed roots.
Passes through forest and farmland along the shores of New London Bay.

HOMESTEAD - SIMPSON LOOP

355 Grahams Lane, Cavendish
6km Stacked, Loop
Packed gravel; flat with gently rolling sections, some exposed roots.
Passes through forest and farmland along the shores of New London Bay.

GULF SHORE WAY WEST

(TOP OF PAGE) Oceanview trailhead: 100 Terre Rouge Lane, Cavendish / North Rustico Gate trailhead: 216 Churchill Road, North Rustico. 8.5km One-way, Linear
Asphalt; gently rolling with few short, steep sections. Note: Loose gravel may be present on pavement.
Skirts the sandstone cliffs and showcases views of the Gulf of St Lawrence.

Cavendish Trails



CAVENDISH DUNELANDS

590 Grahams Lane, Cavendish
2.4km One-way, Linear
Packed gravel; flat with gently rolling sections.
Stunning views of sand dunes and a floating boardwalk over a freshwater pond.

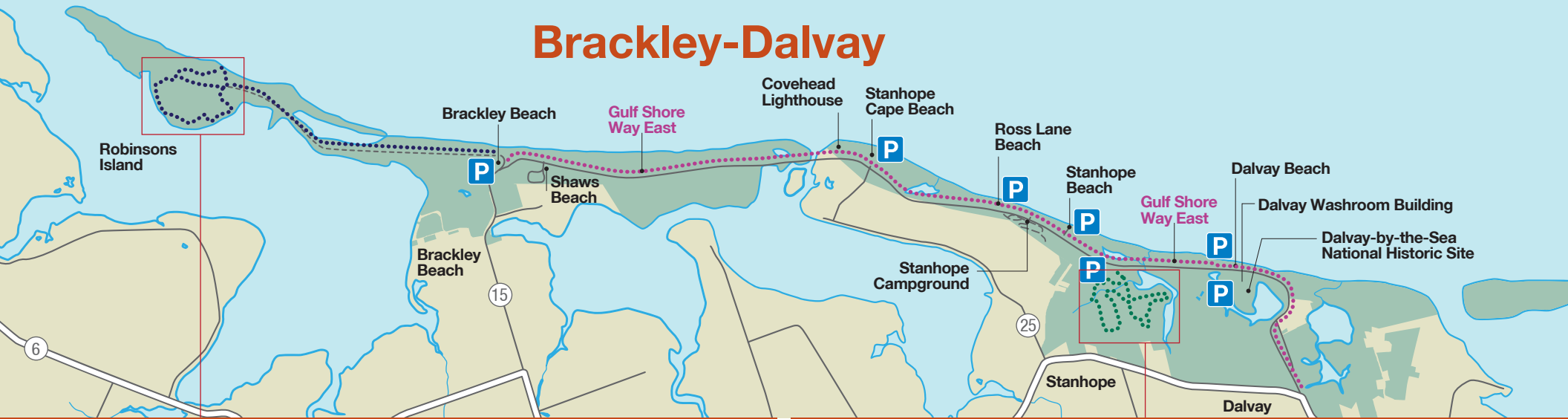
CAVENDISH BEACH

8780 Route 6, Cavendish
1.1 km One-way, Linear
Asphalt and packed gravel; flat with a short steep section and gently rolling sections.
Passes through a sugar maple stand on the way to Cavendish Beach.

CLARKS LANE

8780 Route 6, Cavendish
1.2km One-way, Linear
Asphalt and packed gravel; flat with a short, steep section. Note: Crosswalk at Grahams Lane.
Passes along fields and forest edges.

Brackley-Dalvey



Robinsons Island Trails

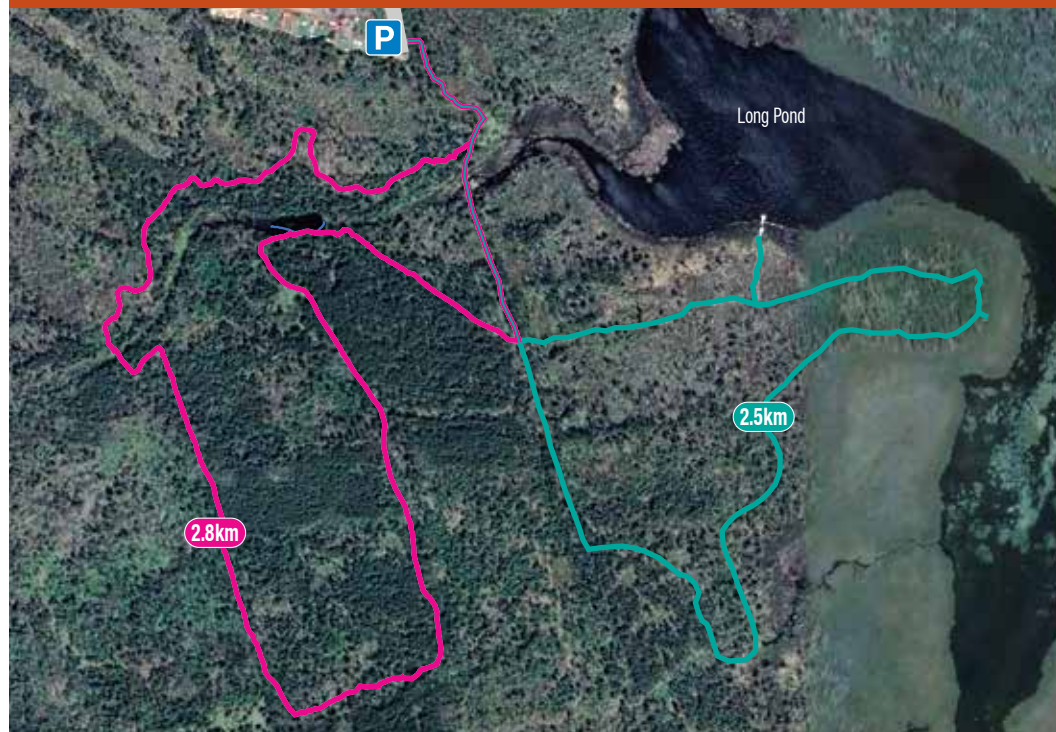


R.I.T.S. (ROBINSONS ISLAND TRAIL SYSTEM)

740 Gulf Shore Parkway, Brackley Beach
8.5km, Stacked Loop
Packed gravel; flat with gently rolling sections. Exposed roots. Optional technical features & tight/blind turns (beginning mountain bikers).
Passes through forest, fields and along coastal areas.



Bubbling Springs/Farmlands Trails



FARMLANDS

735 Gulf Shore Parkway, Stanhope
2.8km, Loop
Packed gravel; flat with gently rolling sections. Exposed roots.
Passes along old fields, mixed woodlots and the site of a former archaeology dig.

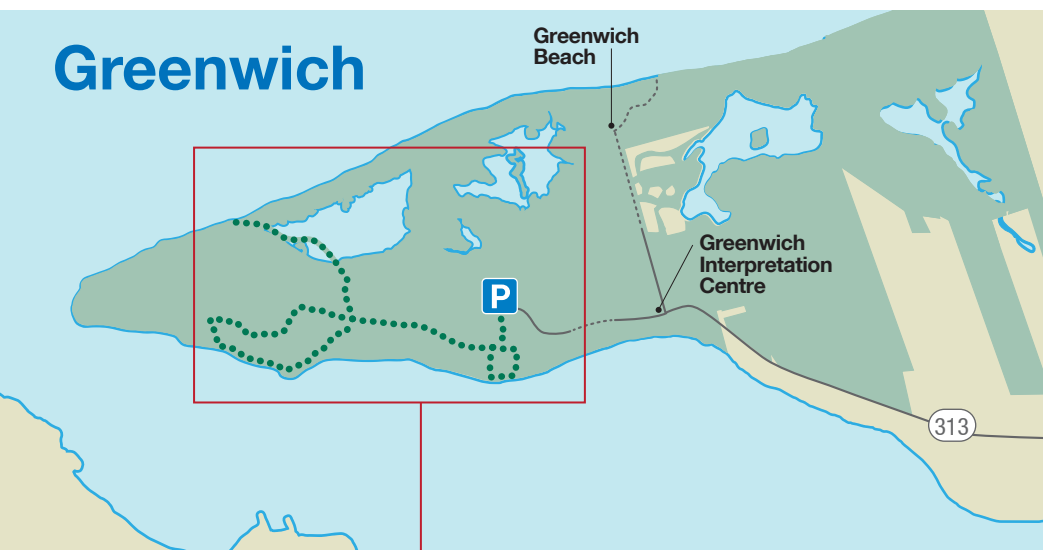
BUBBLING SPRINGS

735 Gulf Shore Parkway, Stanhope
2.5km, Loop
Grass and packed gravel; flat with gently rolling sections. Exposed roots.
Wooded trail with lookouts along Long Pond.

GULF SHORE WAY EAST

(TOP OF PAGE) Brackley Beach Complex trailhead: 4021 Brackley Pt. Rd. / Dalvey Gate trailhead: 48 Gulf Shore Parkway, Dalvey. 12.2km One-way, Linear
Asphalt; Flat. Note: Gravel or sand may be present on pavement.
Passes by salt marshes and features views of sand dunes and forest areas.

Greenwich



Greenwich Trails



GREENWICH DUNES

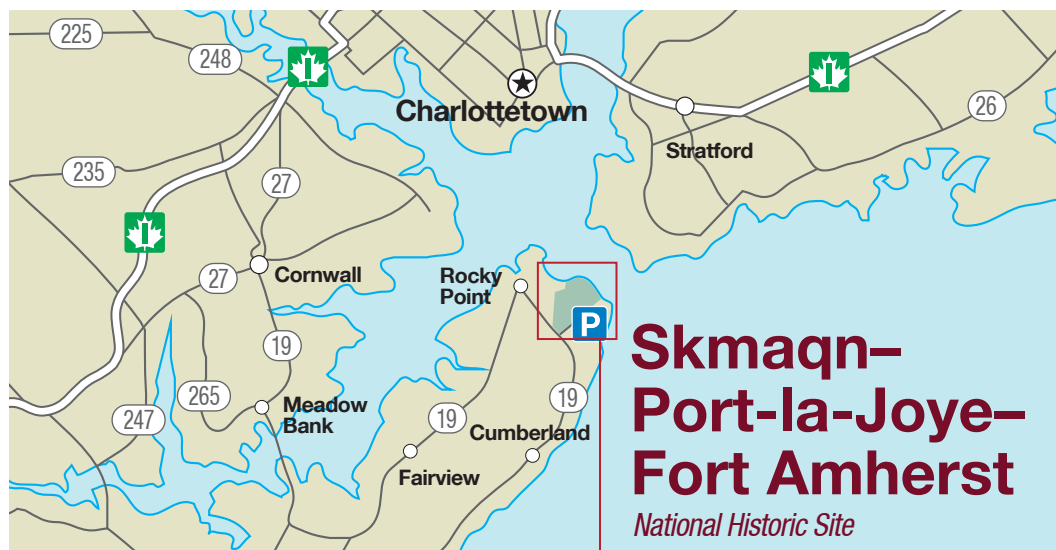
61 Greenwich Road - Route 313, Greenwich
4.6km, Return, Linear
Packed gravel; flat with gently rolling sections. Some stairs and steep sections over dune. Tensar matting can be slippery.
Travel over fields, through a forest stand and over a floating boardwalk at Bowley Pond to the parabolic dune system.

TLAQATIK

61 Greenwich Road - Route 313, Greenwich
4.7km, Return. Loop is 2.4km. Loop
Packed gravel; flat with gently rolling sections. Beach access down slight bank, tight/blind turns.
Trail along the edges of St. Peters Bay.

HAVRE SAINT PIERRE

61 Greenwich Road - Route 313, Greenwich
1.1km, Loop
Grass; flat with gentle slope.
Views of beautiful St. Peters Bay.



Skmaq-Port-la-Joye-Fort Amherst

National Historic Site

Skmaq-Port-la-Joye-Fort Amherst



Skmaq-Port-la-Joye-Fort Amherst Trail System

191 Haché-Gallant Drive, Rocky Point
Composed of many different segments of varying lengths, this network of trails has something for everyone. Short distances, long distances, coastal routes, harbour views and wooded paths are all here!
Choose your own adventure based on your available time or interests. Have fun and enjoy the beautiful views!

- 0.3 km interpretive trail.
- 0.5 km path.
- 0.3 km wood chip trail.
- 0.2 km path.
- 0.6 km trail.
- 0.3 km path.
- 3 km trail.
- 0.8 km trail.
- 0.6 km gravel path.