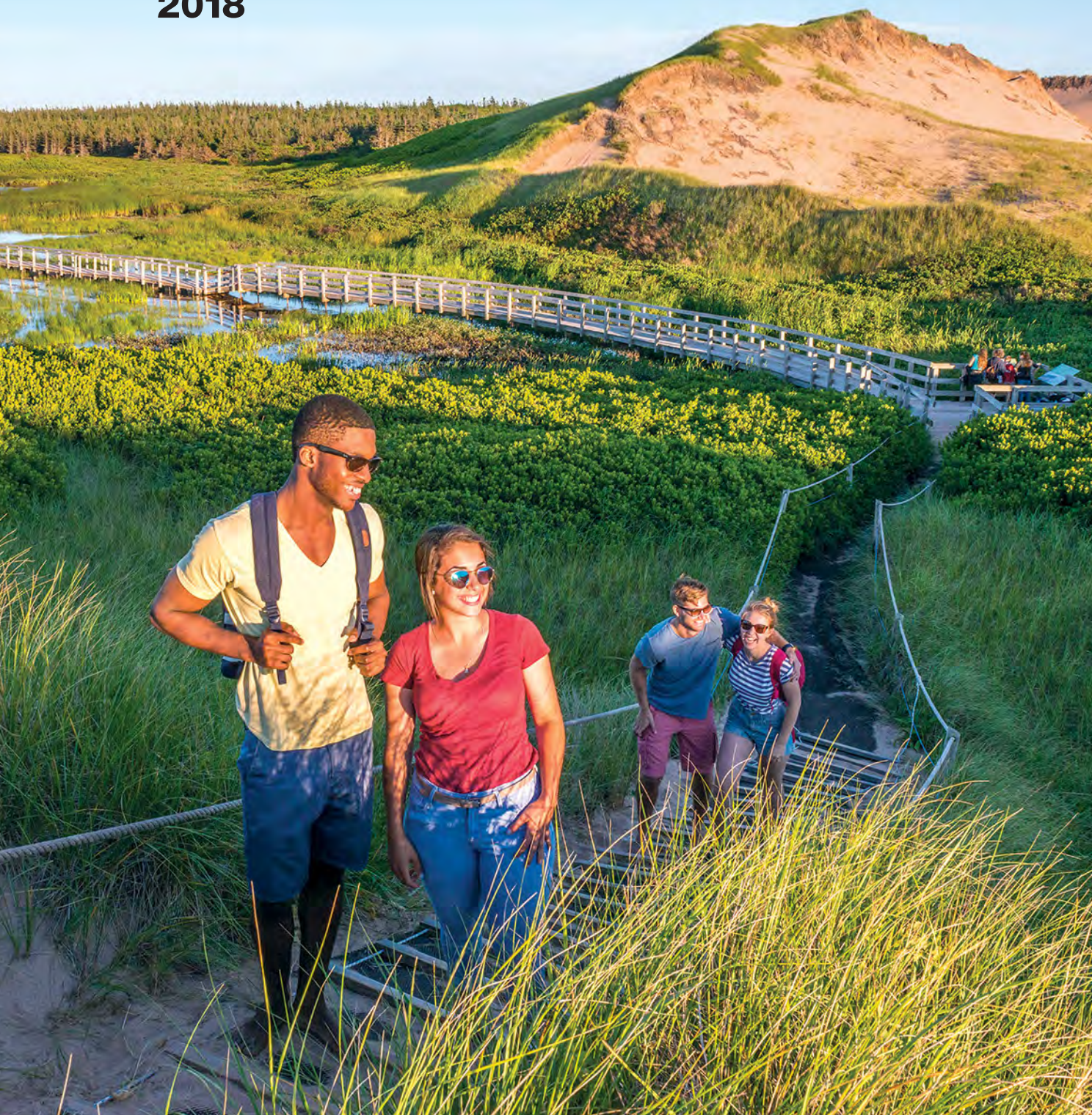




Prince Edward Island
National Park

Visitor Guide

2018



Parks
Canada

Parcs
Canada

Canada

Welcome

Treasured by the Mi'kmaq people since time immemorial, this is a place in constant evolution. Composed of coastal regions varying from rugged red sandstone cliffs to rolling dunes and pristine sandy beaches, Prince Edward Island National Park continues to be shaped and re-shaped by the wind and waves. We are proud to be stewards of this land, conserving it for the generations to come.

As your hosts, we welcome you with our warmest "Island" greeting and invite you to see for yourself what makes this such a special place. We invite you to make a personal connection with this landscape that has been drawing people back for so long.

Have a wonderful visit with us,



Karen Jans
Field Unit Superintendent,
Parks Canada, Prince Edward Island

Pjila'si Epekwithkewey Tepkistek Maqamikew Anko'tasik

On behalf of the Mi'kmaq First Nations of Prince Edward Island - welcome to Prince Edward Island National Park.

Known in Mi'kmaq as Epekwithk, Prince Edward Island has been part of our traditional territory and a home to our Mi'kmaq people for thousands of years. The north shore in particular, with its many bays and rich marine resources, has long held a special place for us.

Archaeological sites found in PEI National Park, such as those at Greenwich and Robinsons Island, are a testament to that ancient connection and have taught us much about the lives of our ancestors here so long ago. But our links to this land are also very much alive.

Our First Nations, through our common voice the Mi'kmaq Confederacy of PEI, collaborate with Parks Canada on the management of the park in many ways, such as forest restoration projects, programs that bring alive Mi'kmaq heritage and culture, or fostering traditional activities on the land.

We wish you a pleasant stay in this special part of Epekwithk, and invite you to learn more about its Mi'kmaq heritage during your visit.

Wela'lioq,



Chief Matilda Ramjattan
Lennox Island First Nation
Co-Chair, Mi'kmaq
Confederacy of PEI



Chief Brian Francis
Abegweit First Nation
Co-Chair, Mi'kmaq
Confederacy of PEI



Table of Contents

- 3 Building the park of tomorrow, today!
- 4 Spotlight on Greenwich
- 5 Get your pass!
Tips from the experts!
- 7 Camping at PEI National Park
- 8 The oTENTik experience
The Great Island Campout
- 9 Accessibility at PEI National Park
- 10 2018 Beach Services Schedule
& Visitor Safety
- 11 PEI National Park Maps
- 12 Trail Guide
- 13 Do More With Your Visit!
- 14 Weddings and Events in
Iconic Places!
- 15 Discover Our Wild Side
- 16 Keep our Park Healthy
- 17 Adventures with Anne at
Green Gables Heritage Place
- 19 Province House
National Historic Site
- 20 Skmaqn — Port-la-Joye —
Fort Amherst National Historic Site
- 21 Summer Fun Schedule

Building the park of tomorrow, *Today!*

Over the past few years, Parks Canada has been working hard to improve our facilities for visitors.

In fact, we are spending more than \$3 billion dollars over a 5 year period on infrastructure work in Parks Canada sites all across Canada – the largest federal infrastructure investment plan in our history!

Big things are happening at Province House National Historic Site and Green Gables Heritage Place, but there have also been some remarkable improvements in PEI National Park, including:

- Renovations to our trails - including our iconic floating boardwalk at Greenwich featuring materials that are eco-friendly and recyclable.
- Rehabilitation of the Covehead Bridge, the largest Parks Canada bridge in the Maritime Provinces!
- Repaving of the Gulf Shore Parkway and improvements to the Gulf Shore Way Trails.
- Upgrades to Stanhope and Cavendish Campgrounds, including larger campsites, updated washrooms, improved registration areas and the addition of the ever-popular oTENTiks.
- Updates to beach facilities, including refreshed exteriors at Stanhope and Cavendish beaches.
- Installation of solar hot water at Brackley and Cavendish beach facilities.

This season, you will notice improvements to our entrance kiosks as well as ongoing work on our trail systems. Any temporary trail closures will be clearly marked for your convenience.



Stanhope Campground Kiosk

We appreciate your patience as we work hard to improve our sites and services for visitors. These investments will ensure the quality and reliability of our facilities and allow visitors to connect with nature for many years to come!

Visit our website for the most up-to-date information on this work parksCanada.ca/pei-infrastructure or feel free to call us at 902-672-6350.



Cavendish Campground Kiosk



Brackley Beach Facility

Spotlight On... *Greenwich!*

2018 is a special year for the easternmost segment of the park - it is 20 years since Greenwich became part of Prince Edward Island National Park. Truly a jewel, Greenwich is a place rich with cultural and natural history and is only a few steps off the beaten path. Known for having the most dramatic dunescapes in the province, this site has a wonderful trail system, a "hidden gem" of a beach and an informative and engaging interpretation centre. Take a trip to Greenwich and help us celebrate this treasured part of the province!



Greenwich Floating Boardwalk

For more information about Greenwich, visit parksCanada.ca/greenwich

PEI National Park entry permits are required and can be purchased at the Interpretation Centre.

Greenwich Interpretation Centre open 9am-5pm daily, June 13 to September 14.

Greenwich Beach is supervised from June 30 to August 19. Day use area open June 11 to September 14.



Greenwich Boardwalk

Photo Credit: PEI Tourism/Paul Bagjole

Get your *Pass!*

Services and facilities in Prince Edward Island National Park are available from May 14th to October 17th. Enhanced services and programming are available from July 1st to September 3rd.

For more information about operating hours and dates, please visit our website at parksCanada.gc.ca/pei

Free admission for youth!

As of 2018, admission to all Parks Canada parks, national historic sites and marine conservation areas is free for youth aged 17 and under.

Did you know?

Entry and service fees are charged at most national parks and national historic sites, where revenues are kept to support visitor services and facilities. This means that every time you visit a park or site, you are investing in its future – and in a legacy for future generations. Thank you!



Day Pass - Stay and play all day!

This pass provides you with unlimited access to PEI National Park from the time of purchase until 12 noon the following day. Entry fees will be charged from June 13 - September 3, 2018

2018 Day Pass		
	June 13 - June 30	July 1 - September 3
Adult (18-64)	\$3.90	\$7.80
Senior (65+)	\$3.15	\$6.80
Youth (6-17)	Free	Free
Child (0-5)	Free	Free
Family/Group <i>**up to 7 people in one vehicle</i>	\$7.85	\$15.70

Season Pass - Come and go all summer long!

As a season pass holder, you get unlimited access to PEI National Park sites and services from June 13 to September 3, 2018.



2018 Season Pass	
Adult (18-64)	\$39.20
Senior (65+)	\$34.30
Youth (6-17)	Free
Child (0-5)	Free
Family/Group <i>**up to 7 people in one vehicle</i>	\$78.50

Parks Canada Discovery Pass - The ultimate year-round access pass!

This national pass gives you unlimited entry to all Parks Canada administered parks, national historic sites and marine conservation areas across Canada for 12 months from the date of purchase.



2018 Discovery Pass Rates	
Adult (18-64)	\$67.70
Senior (65+)	\$57.90
Youth (6-17)	Free
Child (0-5)	Free
Family/Group <i>**up to 7 people in one vehicle</i>	\$136.40

Tips from the experts!

Like a quieter scene? Aim for Off-Season!

PEI National Park, Green Gables Heritage Place and national historic sites in PEI are busiest during the peak season of July and August. If you like to visit when it's not so busy, you may wish to plan your visit for June, September or even October. Green Gables is open 7 days/week from May 1-October 31 and trails at PEI National Park and at Skmaqñ—Port-la-Joye—Fort Amherst National Historic Site are beautiful at those times too!

Sites are busiest in the middle of the day.

During the summer, the days are busiest between 11:00 am and 3:00 pm. If you prefer to avoid the biggest crowds, your best bet is to come before or after those hours. If you do come on a busy day, please be patient – we will do our very best to make sure your visit is wonderful even if there is a line! Check parking conditions at pc.gc.ca/peinow before you come.

Stay connected!!

To stay “in the loop” when it comes to what’s happening at PEI National Park, sign up for BamAlert notices about special events, activities, updates and more. Text “**OPT IN**” to **902-200-4499** and we’ll make sure you’re the first to know when there’s news! If you ever wish to stop receiving alerts, simply text “**OPT OUT.**”

Staff Picks!

“My favourite spot in PEI National Park is the red chair viewing deck on the south side of Robinsons Island, just off the Robinsons Island Trail System. One summer day, I sat there for a half hour, watching several osprey dive for fish. It was so peaceful!”

Annette Campbell,
Public Relations and Communications Officer

“There is a lovely old-growth forest stand in Cavendish off the Homestead Trail that I love with its beautiful old maple and birch trees. I like to stop by whenever I can and just walk around, looking up more often than not.”

Matt Angus, Resource Management Officer

Visiting PEI National Park with your dog

The beautiful beaches in PEI National Park are not only a destination for thousands of visitors every year, but also for nesting shorebirds. Sharing the beach can be a challenge, but ensuring visitor safety and the protection of nesting habitat are a priority for Parks Canada.

Between April 1 and October 15th annually, there is a domestic animal ban applied to all beaches in PEI National Park. This enables shorebirds to forge and fledge their young, and provides a safe and enjoyable experience for all of our visitors.



We recognise that our dogs are family members too! Park trails, Cavendish Grove and the campgrounds are the perfect place to explore with your leashed dog. Please be sure to bring along adequate supplies for your pet, such as waste removal bags and water.

Remember that dogs should not be left in parked cars for any length of time. Temperatures can rise quickly and we want the best for all of our visitors, even the furry, four-legged ones!



Camping at PEI National Park

Over 400 campsites at 2 campgrounds

For reservations, call 1-877-737-3783 or visit reservation.parksCanada.gc.ca



Cavendish Campground

CAVENDISH CAMPGROUND

357 Grahams Lane, Cavendish
June 8 – Sept 27

Welcome Kiosk Hours:

June 8 – June 14: Daily, 8am – 8pm
June 15 – Sept 3: Daily, 8am – 10pm
Sept 4 – 27 (self-registration): Daily, 8am – 8pm

A large, fully-serviced campground located just steps from the ocean in the heart of Cavendish. Camp under the stars and be serenaded by the sound of the wind and waves! Enjoy the on-site supervised beach, spectacular cycling and walking trails, fascinating learning activities and family-friendly programs on the beach. Welcome Kiosk with Parks Canada shop. When the sun sets, immerse yourself in Island culture through music and stories at our evening campfire programs. Special “Yoga on the Beach” program offered (see p. 13, \$7.30/person). All facilities and select sites are accessible.

Services

	Showers	Laundry	Supervised Beach	Ice available	Playground	Fire Pits
Cavendish Campground	✓	✓	✓ June 30 – Aug 26, 11am – 5pm	✓	✓	All sites
Stanhope Campground	✓	✓	1 km June 29 – Aug 26, 11am – 6pm	✓	✓	All sites

STANHOPE CAMPGROUND

983 Gulf Shore Parkway, Stanhope
June 8 – Sept 3

Welcome Kiosk Hours:

June 8 – June 14: Daily, 8am – 8pm
June 16 – Sept 4: Daily, 8am – 10pm

A large, scenic campground surrounded by open dunescapes and minutes away from bustling Covehead Harbour. Just 20 minutes from the capital city of Charlottetown, Stanhope Campground is only 1 km away from Stanhope Beach, PEI National Park’s most “accessible” beach with mobility mats and beach wheelchairs available to visitors. Seaside trails are nearby for cycling and hiking. Welcome Kiosk with Parks Canada shop. Evening programming features music and stories around the campfire. Special “Yoga on the Beach” program offered (see p. 13, \$7.30/person). All facilities and select sites are accessible.

Pricing per night

Rate Availability	Unserviced	Serviced		oTENTik
		water & electricity	water, electricity and sewer	
June 8 -14 (Both Campgrounds)	\$22.00	\$26.00	\$28.00	\$120.00
June 15 - Sept 3 (Both Campgrounds)	\$27.40	\$32.30	\$35.30	\$120.00
Sept 4 - 27 (Cavendish Only)	\$22.00	\$26.00	\$28.00	\$120.00

Please Note: PEI National Park entry fees applicable in addition to camping fees from June 13 to September 3, 2018.

Opt for **oTENTik!**



oTENTik,
Stanhope Campground

Exclusive to Parks Canada, oTENTiks blend the fun of a tent with the convenience of a cabin. Each oTENTik is equipped with its own parking area, picnic table, BBQ, fire pit with four campchairs and more. Ditch the gear – opt for an oTENTik!

What to Bring

- Sleeping bags, blankets, pillows and toiletries
- Food, drinks and a water container
- Matches or lighter to light the campfire
- Slippers or indoor shoes – the first rule of keeping a tent clean is to remove outdoor footwear

The Great Island Campout

Looking for one last amazing weekend of summer camping? We've squeezed all of our best activities of the season into one full weekend of family-friendly fun at Cavendish Campground from August 31 to September 2.

Gather up your favourite camping companions and reserve your site before they are gone!

The Campground Chef Cook-off

Every campground chef has their favourite fireside recipes that fill their camping memories with tasty flavours. Each summer, we invite a few lucky people to share their best camping recipe and to take part in a cook-off at Cavendish Campground. Set for August 31, this is a great evening of friendly competition and fireside fun for all. The winning recipe will be featured in our 2019 visitor guide!

“Twists!”



2017 Campground Chef Cook-off winner Kathy Mijatovich shared with us a recipe that originated with her uncle. These simple two-ingredient treats were a staple at every camping trip. Give them a try yourself the next time you're sitting around a campfire!

Ingredients

- Biscuit dough (*make your own or use packaged biscuit dough*)
- Butter

Directions

Take a large spoonful of biscuit dough and roll it into a rope shape. Twist the dough around your favourite roasting stick, flattening the rope of dough as you go. Toast over the campfire till golden brown. Slide off the cooked coil, put butter on one end and let it melt, swirling down the coil to the other end. Enjoy!!

Options

Add some jam for a sweeter treat or dip the buttered end in some cinnamon sugar. You can also wrap the biscuit dough around a wiener or sausage for a fireside “piggy in a blanket”!



Accessibility at PEI National Park

Beach Accessibility

Prince Edward Island National Park welcomes guests with all levels of mobility and we are pleased to provide some special services to make everyone's visit the very best one possible.



Mobility-Friendly Beaches

Brackley Beach, Stanhope Beach, and Cavendish Campground Beach all offer supervised swimming, accessible beach access and designated parking for those with limited mobility. Basic beach wheelchairs are available at each of these locations. These chairs feature wider, softer tires that easily navigate the uneven sand surface. For more information, please call 902-672-6350.

Stanhope Beach Profile

Our Most "Accessible" Beach!

In 2017, PEI National Park was delighted to outfit Stanhope Beach with some new accessories, aiming to make the full beach experience even more accessible for all. In addition to a basic beach wheelchair, Stanhope also boasts:

A smoother path over the sand with mobility mats

This special mat surface begins at the base of the beach entrance ramp and stretches over the uneven, soft sand, giving access to the hard-packed wet sand along the water's edge. This creates an easy path of access for wheels of all kinds.

Get your feet wet... Stanhope Beach is also equipped with a buoyant beach chair, allowing the user to get right into the water for the full beach-day experience.



Stanhope Beach Wheelchair.



Stanhope Campground - oTENTik

Accessible Camping

All facilities at both Cavendish Campground and Stanhope Campground are accessible and both locations have selected sites, including 2 oTENTiks, designed for those with limited mobility. To reserve, call 1-877-737-3783 or visit reservation.parkscanada.gc.ca

Accessible Trails

Both Gulf Shore Way East (see Brackley-Dalvey Map) and Gulf Shore Way West (see Cavendish-North Rustico Map) trails have smooth, even surfaces allowing for easy use by those with wheelchairs. The Old Harbour Path at Skmaq—Port-la-Joye—Fort Amherst National Historic Site, and the Havre St-Pierre trail in Greenwich are also partially accessible.



Stanhope Beach Mobility Mat

2018 Beach Services *Schedule*

We are pleased to offer 7 supervised beaches at Prince Edward Island National Park.

LOCATIONS	START DATE	END DATE	DAILY HOURS
Brackley Beach	June 29	September 3	10am - 6pm
Cavendish Beach	June 29	September 3	10am - 6pm
Cavendish Campground Beach	June 30	August 26	11am - 5pm
Greenwich Beach	June 30	August 19	11am - 6pm
North Rustico Beach	June 30	August 19	11am - 5pm
Ross Lane Beach	June 30	August 19	11am - 5pm
Stanhope Beach	June 29	August 26	11am - 6pm

Visitor *Safety*

Staying Safe on the Shores



Rip Current Safety

Learn how to break the grip of the rip

Rip currents are powerful, fast-moving seaward currents that can pull even the strongest swimmers out to sea.

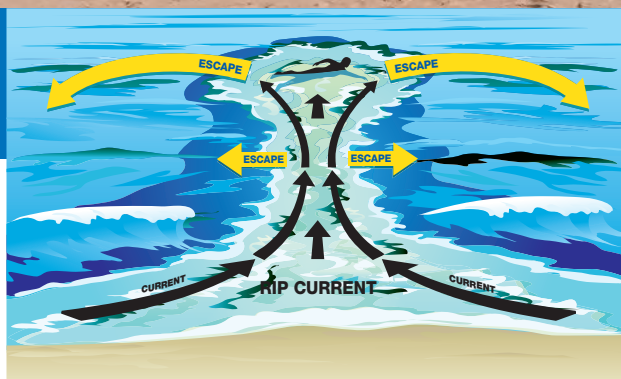
Be safe: Know how to swim, never swim alone, and when in doubt, don't go out.

If you become caught in a rip current:

- Don't fight the current
- Swim out of the current, then to shore
- If you can't escape, float or tread water
- If you need help, call or wave for assistance

Parks Canada and its service providers make every reasonable effort to mark areas that are known to have rip currents; however, there may be other such areas that are not marked.

For surf conditions go to parkscanada.gc.ca/pei-surf



Inflatables

Inflatable chairs, toys, etc. are not permitted in supervised swimming areas as even moderate winds can cause them to drift too far off-shore.

Be sun safe!

Pack your sunscreen and hat and don't forget to bring along lots of drinking water.

Cavendish-North Rustico

This region is your destination for sandy beaches, rugged sandstone cliffs and all things “Anne of Green Gables”!



Legend

- Campground
- Unsupervised Beach
- Lookout/Birdwatching
- Exhibit
- Parking
- Picnic Area
- Supervised Beach
- Wheelchair Access
- Washrooms
- Information

1 Cavendish Campground Full service campground with unserviced, 2 & 3-way sites, as well as oTENTiks. Playground, kitchen shelters, supervised beach, family programming and wifi. See p. 7 for more info.

2 Cavendish Beach Open May 14 - September 28. Washrooms, showers and canteen services. Beach supervised from June 29 - September 3. Trailhead for the Cavendish Dunelands & Cavendish Beach Trails.

3 Oceanview The name says it all! Bring your camera and capture some breathtaking views with your lens. Parking, picnic area, and trailhead for the Cavendish Dunelands & Gulf Shore Way West trails. Day use area open June 11 - September 14.

4 Cavendish Grove Beautiful picnic area suitable for groups of all sizes. Trailhead for the Cavendish Beach, Clarks Lane & Cavendish Dunelands trails. Signage along the trails highlights natural & cultural heritage of the area. Day use area open May 14-Sept. 28.

5 Green Gables Heritage Place Part of Lucy Maud Montgomery's Cavendish National Historic Site. Features original farmhouse that inspired the setting of *Anne of Green Gables*, exhibits, a short film about the author's life and more! Gift shop & snack bar available May - October. Family-friendly programming in July/August. See p. 21 for more information.

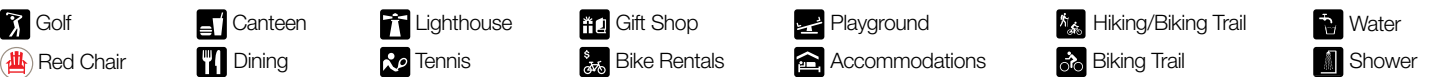
6 Site of L.M. Montgomery's Cavendish Home Part of Lucy Maud Montgomery's Cavendish National Historic Site. Features restored foundation of the author's homestead, bookshop and walking trail with signage detailing site history. **Privately owned and operated; required admission pass available for purchase at Green Gables Heritage Place and on-site.** peisland.com/lmm

7 Green Gables Golf Course Privately operated 18-hole golf course. Dining services available. For more info, see website: greengables.com

8 North Rustico Beach Open June 11 - September 14. Supervised from June 30 - August 19. Washroom facilities and parking area.

Brackley-Dalvey

This region is your destination for sandy beaches, Covehead Lighthouse, birdwatching at the marsh, Dalvey-By-The-Sea and even mountain biking!



9 Stanhope Campground

Full service campground with oTENTik, unserviced, 2 & 3 way sites. Enclosed kitchen shelters, washrooms, playground, family programming and wifi. More details on p. 7.

10 Brackley Beach

Open May 14 - October 17, Brackley Beach Facility has wheelchair beach access, picnic area, washrooms, large parking area. Canteen services throughout July & August. Beach supervised from June 29 - September 3.

11 Stanhope Beach Facility

Open May 14 - September 28, Stanhope Beach Facility has wheelchair beach access, washrooms, playground, picnic area, kitchen shelter and parking. Beach supervised from June 29 - August 26.

12 Ross Lane Beach

Open May 14 - September 28, Ross Lane Beach has composting toilet and overflow parking. Beach supervised from June 30 - August 19.



Robinsons Island

13 Dalvey-by-the-Sea National Historic Site

Once a summer home, this beautiful heritage property is now a 25-room hotel with eight 3-bedroom cottages. A popular wedding destination with dining and event facilities and other guest services, including bicycle rentals. Visitors are welcome to take a peek inside and to stay for lunch or dinner in their popular restaurant. For more info, see website: dalveybythesea.com

Greenwich

This region is your destination for incredible dunescapes, Mi'kmaq & Acadian heritage and beautiful paths less traveled!



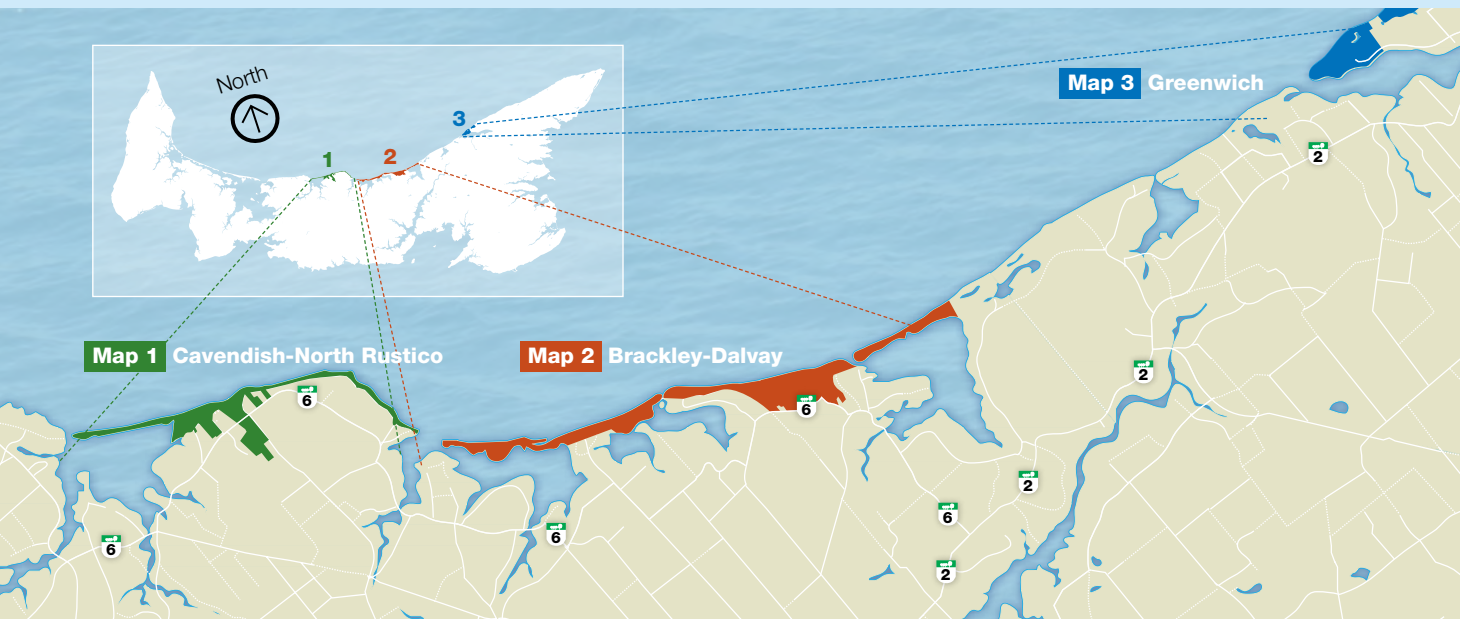
----- Unpaved Road ——— Paved Road = Highway Easy Trail Moderate Trail

14 Greenwich Interpretation Centre

Open 9am to 5pm, June 13 - September 14. This accessible building has washrooms, parking, visitor information, interactive displays and a fascinating film about the history of the area.



15 Greenwich Beach

Open June 11 - September 14. Supervised from June 30 - August 19. Parking, picnic area, kitchen shelter and lots of beautiful views!



Trail Guide

Please note: The trail system at Skmaqñ—Port-la-Joye—Fort Amherst National Historic Site is not included in this list as the locations are not visible in the maps provided. For information about this extensive trail network, see website parkscanada.ca/portlajoie.

Hiking Only	Rating	Address	Length	Type	Description
E Balsam Hollow 	Easy	8619 Cavendish Road, Route 6	0.8km	Loop	Trail begins with the famous Lovers' Lane, a treasured place mentioned frequently in author L.M. Montgomery's writings. Main trail passes through peaceful woodlands and follows a brook.
F Haunted Wood 	Easy	8619 Cavendish Road, Route 6	0.9km	Loop	This wooded area served as the inspiration for the Haunted Wood that appeared in <i>Anne of Green Gables</i> . Passes near the Cavendish Cemetery, resting place of L.M. Montgomery, and connects to the Site of L.M. Montgomery's Cavendish Home (separate entry fee or combination pass required).
Hiking/Biking	Rating	Address	Length	Type	Description
A Homestead Trail	Moderate	355 Grahams Lane, Cavendish	7.4km/ 9.5km	Stacked Loop	Passes through forest and farmland along the shores of New London Bay. Best for hybrid or mountain bikes. Note: Trail re-route taking place in 2018. Some disruptions may occur.
B Cavendish Beach Trail 	Easy	8780 Cavendish Road, Route 6	1.1km	Linear	Passes through a sugar maple stand before reaching Cavendish Beach and connecting to Cavendish Dunelands trail. Suitable for most bikes.
C Clarks Lane	Easy	8780 Cavendish Road, Route 6	1.2km	Linear	Starts at Cavendish Grove and connects to Cavendish Dunelands and Cavendish Beach trails. Suitable for most bikes.
D Cavendish Dunelands 	Easy	590 Grahams Lane, Cavendish	2.3km	Linear	Stunning views of sand dunes and freshwater ponds. Links to the Homestead Trail and Gulf Shore Way West. Suitable for most bikes. Please walk your bike across the boardwalk.
G Gulf Shore Way West Trail 	Easy	Oceanview Lookoff trailhead: 100 Terre Rouge Lane, Cavendish / North Rustico Gate trailhead: 216 Church Road, North Rustico	8.5km	Linear	Trailheads at Oceanview Lookoff and North Rustico park entry gate. Paved, multi-use trail skirting the top of the red sandstone cliffs with magnificent views of Gulf of St. Lawrence. This trail is a perfect conduit from Cavendish Campground to North Rustico, or anywhere in between. Suitable for all bikes and for walking, jogging, cycling or rollerblading. Accessible.
H R.I.T.S. (Robinsons Island Trail System) 	Easy	740 Robinsons Island Road, Brackley Beach	5km	Stacked Loop	12 optional technical features. Suitable for beginner to intermediate mountain bikers. Picnic area, observation stations and beach access. Hybrid or mountain bikes recommended.
I Gulf Shore Way East Trail 	Easy	Brackley Beach Complex trailhead: 4021 Brackley Pt. Road, Route 15 / Dalvay Gate trailhead: 48 Gulf Shore Parkway, Dalvay	12km	Linear	Stretching from Brackley to Dalvay, this paved, multi-use trail runs along the coast from Dalvay Gate all the way to Brackley Beach! Take in the beautiful views of sand dunes, salt marshes and forests from a whole new point-of-view! Suitable for all bikes and walking, jogging, cycling or rollerblading. Accessible.
J Farmlands 	Easy	735 Gulf Shore Parkway, Stanhope	2.7km	Loop	A path taking you along old fields and mixed woodlands and close to the site of a former archaeological dig. Hybrid or mountain bikes recommended.
K Bubbling Springs 	Easy	735 Gulf Shore Parkway, Stanhope	2.2km	Loop	A favourite among birdwatchers, this path has lookouts that offer great views of waterfowl at Long Pond. Hybrid or mountain bikes recommended.
L Greenwich Dunes 	Moderate	10 Greenwich Road, Greenwich	4.8km	Linear	Travel across homestead fields, through a forest stand, and over Bowley Pond on a floating boardwalk, as you journey toward your first sight of the majestic Greenwich Dunes. Only part of this trail can be explored by bike. You can travel as far as the junction with the Tlaqatik Trail and then continue on foot. Bike locks are available to borrow at the Greenwich Interpretation Centre. If you choose to cycle, then hybrid or mountain bikes are recommended.
M Tlaqatik 	Moderate	10 Greenwich Road, Greenwich	4.8km	Loop	Experience the history of the area, and the story of human interaction with the land over time, as you journey along the edges of St. Peters Bay. If you choose to cycle, then hybrid or mountain bikes are recommended. Note: Please dismount at boardwalk.
N Havre Saint Pierre  	Easy	10 Greenwich Road, Greenwich	1.1km	Loop	This short trail takes you along the shores of beautiful St. Peters Bay. The flat, natural surface trail is partially wheelchair accessible.

Do More With Your Visit!

Xplorers' Club

Travelling with children? When visiting PEI National Park, Province House National Historic Site (The Story of Confederation Exhibit) & Green Gables Heritage Place, ask for Xplorers' booklets for any young people ages 6 to 11 years. Filled with fun activities to guide your visit and add a little extra discovery to your day!



Geocaching

Grab your GPS or GPS-enabled smart phone and go exploring! Designed as a fun treasure hunt to get you exploring the natural world around you, geocaching is a favourite activity of many. For more information, check out parksCanada.gc.ca/pei-geocaching

Yoga on the Beach

Find inner harmony as you connect your mind and body through a revitalizing yoga class set to the soothing rhythms of the wind and waves. Bilingual and suitable for all levels, this is a class you don't want to miss. Fee is \$7.30 per person and payable at the entrance kiosk at either Stanhope or Cavendish Campground. For class schedule, see p. 21-22.



Notable Dates in 2018

National Aboriginal Day – June 21

Canada Day – July 1 (Free admission)

Canada Historic Places Day – July 7

Parks Day & Great Island Sandcastle Competition – July 21

Acadian National Feast Day – August 15

Campground Chef Cook-off – August 31

Great Island Campout –
August 31 - September 2



Perfect Picnic

Come connect with some of the most breathtaking landscapes PEI National Park has to offer while enjoying authentic island cuisine. The Perfect Picnic is a pick-up and go lunch for two, packaged in a Parks Canada picnic box provided by local businesses. To find out more, visit parksCanada.gc.ca/pei-picnic

Add a little extra to your trip...

In addition to regular programming, Parks Canada offers some personalized, guided tours and interactive activities for groups and individuals for a very reasonable cost. If this sounds like just the thing for you, please contact us – we'll be happy to set it all up!

For **PEI National Park activities**,
contact: pnipe.peinp@pc.gc.ca or
call **902-672-6381**

For **Green Gables Heritage Place activities**,
contact: greengables.info@pc.gc.ca or
call **902-963-7874**

Weddings & Events in Iconic Places

Weddings & Events

Parks Canada's parks and sites are often places our visitors associate with some of their most treasured memories. Imagine creating an even deeper connection with some of these beautiful locations by making them the backdrop to a special reunion, event or even your wedding day. Believe it or not, it's possible!

Choose your setting...

Whether your dream is a ceremony surrounded by sand and surf, an exchange of vows in the company of majestic trees and rich greenery, a blessing with the north shore cliffs and dunes as your backdrop or even a festive celebration with the twinkling city lights of Charlottetown behind you, we have just the place for you.

Parks Canada PEI is pleased to offer a new wedding and events program at several locations, making our iconic places and spaces the possible location for your next special day.

Available locations

**Skmaq — Port-la-Joye —
Fort Amherst National Historic Site**

Cavendish Beach

Stanhope Beach

Cavendish Grove

Greenwich

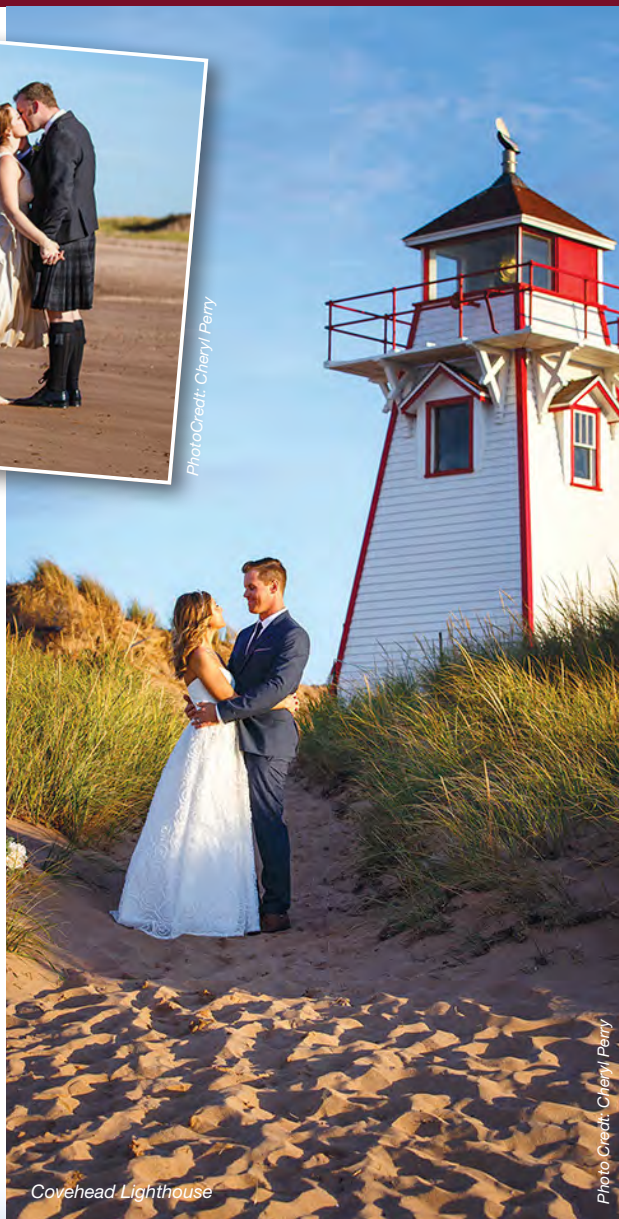
Ardgowan National Historic Site

For more information about hosting your wedding or event at any of these locations, please contact Kimberlee Trainor at kimberlee.trainor@pc.gc.ca or call 902-672-6357.



Dalvay Beach

Photo Credit: Cheryl Perry



Covehead Lighthouse

Photo Credit: Cheryl Perry



Skmaq — Port-la-Joye — Fort Amherst National Historic Site

The Red Chair Experience

PEI National Park and historic sites are located in some of the prettiest spots on Prince Edward Island. While there are no shortage of spectacular vistas, we have chosen a few of our best for our Red Chairs. Seek out these six pairs of comfortable, red Adirondack chairs to see these views for yourself.

Don't forget to **#sharethechair** when you do!

Discover Our *Wild Side*

PEI National Park is home to some pretty fantastic creatures and if you're lucky, you may just spot a few during your visit. Here are a few interesting ones to keep in mind!



Red Fox

One of our most commonly seen PEI National Park residents, the red fox can range in colour from red to black. PEI foxes live in dens dug into the ground and breeding pairs produce between 4 and 9 kits in the springtime. Playful and curious, red foxes can be seen in all areas of the park throughout the year. As tempting as it may be to attempt to attract them, we remind visitors that **feeding wildlife, including foxes, is against the law in Canada's National Parks**. While they may seem kind, hand-outs are harmful and our foxes don't need them – they can hunt very successfully on their own!

Keep the “wild” in “wildlife” – don't feed our park's animals!

Osprey

If you happen to be near a large pond or one of the many bays in PEI National Park, look to the skies for this handsome, predatory bird. With a wingspan of 1.5 to 1.8 metres, these birds are smaller than eagles but impressive nonetheless. Osprey return yearly to large nests built near bodies of water where they can be seen diving from high above, feet first, on the hunt for unsuspecting fish. Found on PEI from spring to fall, these birds are also occasionally seen in the winter months as well.



Bald Eagle

This magnificent bird is a year-round resident of PEI. Often seen soaring the skies over PEI National Park, the bald eagle can also be spotted perched together on dune tops, around Long and Campbells Ponds in Dalvay, Schooner Pond at Greenwich and around the Cavendish area. Pairs mate for life, and produce two eggs each year, returning always to the same very large nest built of sticks.

Great Blue Heron

One of the official symbols of our park, the stately Great Blue Heron is a common sight around the shorelines of PEI National Park from late March until their departure in late fall.

Approximately 1.2 metres in height, blue herons have long, narrow legs for wading in the water and are very patient fishermen, standing motionless in the shallow salt and fresh waters around the Island. Brackley and Covehead Bays are top spots to watch this bird. Isn't it great the way they pose so nicely for photos?



Birdwatchers

Please note!



Orby Head in Cavendish, the marsh found alongside Gulf Shore Way East Trail between Covehead Lighthouse and Brackley, the Tlaqatik & Greenwich Dunes trails are all perfect spots to watch for feathered friends. Keep your binoculars close!

Keep our Park *Healthy*

Parks Canada works hard to ensure that our beautiful national parks stay healthy through all kinds of restoration and conservation projects, through species monitoring and by educating others as to the ways that they can assist in protecting these special places for the future.

Restoring the Acadian Forest

Prince Edward Island was, at one time, almost entirely covered by Acadian forests. A mixture of hardwood and softwood trees, healthy Acadian forests include species like sugar maple, yellow birch, American beech, eastern hemlock, eastern white pine, and red spruce of all different ages and sizes. The forests that now exist in Prince Edward Island National Park occupy lands that were at one time cleared for farmland. When the park was established in 1937, the hardy white spruce eventually came to dominate much of the park's forested landscape. In recent years, Parks Canada has worked hard to return the missing species to the park's forested areas to re-establish a healthy Acadian forest. Staff have been fortunate to have a lot of support for this project. They have consulted with local Indigenous elders to gain an understanding of traditional forest uses and values and partners like the Girl Guides and UPEI's Environment Studies program have assisted with tree planting projects. In all, Parks Canada staff and students planted more than 35,000 trees in 2017 alone!



What are all these little flags?

Throughout the park, there are thousands of pin flags dotting the landscape. These markers have been placed beside hardwood seedlings - red oak, yellow birch and sugar maple - so that Parks Canada staff can monitor them for the first couple of years after planting. Once the trees are big enough to stand out better on their own, the flags will be removed.



UPEI student volunteers assisting with tree planting at Robinsons Island.



Giving our dunes a helping hand by transplanting marram grass.

Protecting the Dunes

The majestic sand dunes you see along areas of PEI's North Shore are actually incredibly fragile. The "hair-like" green spikes of marram grass covering the surface of a healthy dune have long, intertwining root systems that act like nets holding the shifting sands in place. This amazing grass has a sensitive side, however; surprisingly very few steps can kill the plant. The loss of dune grass, and its ability to hold sand in place allows sand to blow away; dunes begin to break up and can disappear. Make your next step a smart one - **keep our dunes safe by using the paths provided when walking to and from the beaches!**

Good news update!

In 2014, the Cavendish Sandspit road was removed and efforts were undertaken to restore the dunes on that site. In 2017, Parks Canada staff were pleased to find the dune restoration target was met: the measuring stakes were now completely covered by sand.

Protecting Species at Risk

There are a number of species at risk that call PEI National Park home. Our park provides critical habitat for the Gulf of St. Lawrence aster, Northern Myotis and little brown bat, as well as the endangered Piping Plover. Probably our most well-known species at risk, the Piping Plover is a shorebird that lays its eggs in very-well camouflaged indentations in the sand on park beaches. One of the ways Parks Canada assists the breeding pairs is by closing off nesting areas to limit disturbances to these delightful but shy, little birds by beachgoers.

To help us ensure our nesting plovers are as successful as possible, please respect any area closures and keep dogs off the beaches between April 1 - Oct. 15.

Our Piping Plover parents thank you!

Piping plover



Domestic animals are prohibited from all beaches from April 1 to October 15 for reasons of public health, safety and conservation.

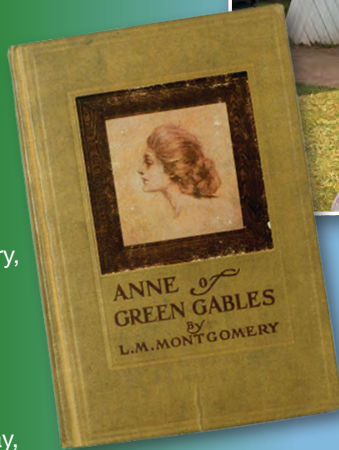


Green Gables *Heritage Place*

Take a walk through the setting of Canada's bestselling novel of all time, *Anne of Green Gables*!

Written by Island author L.M. Montgomery, *Anne of Green Gables* has found its way into the hearts of millions of readers. It tells the tale of Anne Shirley, a spunky, redheaded orphan who comes to live with an elderly brother and sister at their family home called "Green Gables". Today, visitors from around the world flock to Green Gables Heritage Place to immerse themselves in the storybook landscape, find the source of Montgomery's inspiration, and fulfill a lifelong dream of seeing the places they read about first hand.

The house and grounds at Green Gables Heritage Place have been lovingly restored and decorated in exquisite detail to match the world Montgomery described in the story. Journey through the restored house and barns and take a walk along Lovers' Lane and the Haunted Wood trail. Don't forget to take in one of the fun family activities and keep an eye out for Anne strolling around the barnyard. Cap it all off with a deliciously refreshing raspberry cordial or an ice cream at the Butter Churn Café.



Contact Us

(902) 963-7874
greengables.info@pc.gc.ca
parkscanada.ca/greengables
8619 Cavendish Road, Route 6

GPS Coordinates:
46 29' 15.91394" N
63 22' 55.39185" W



HOURS OF OPERATION

May 1 – October 31, 2017
Daily; 9:00am - 5:00pm

April 15 - April 30, 2018 & November 1 - 30
Bookings by appointment only. Special fees apply.

Daily Admission Rates	May 1 - June 30 September 4 - October 31	July 1 - September 3
Adult (18-64)	\$6.30	\$7.80
Senior (65+)	\$5.40	\$6.55
Youth (6-17)	Free	Free
Child (0-5)	Free	Free

CONSTRUCTION NOTICE!

We would like to advise visitors that Green Gables Heritage Place will be undergoing some construction this summer. We apologize for any inconveniences this may cause. We're working hard to make Green Gables even more delightful!

INSIDER TIP!

Green Gables is busiest between 11am and 3pm in July and August. If you prefer a quieter time for your visit, consider coming to see us outside of those hours.



The Site of L.M. Montgomery's Cavendish Home

To learn even more about L.M. Montgomery, don't miss a visit to "The Site of L.M. Montgomery's Cavendish Home," part of L.M. Montgomery's Cavendish National Historic Site and operated privately by the Macneill family. You are welcome to purchase your admission at their on-site bookstore or at our Green Gables Welcome Kiosk. Special combination passes are available. For more information about this special place, visit peisland.com/lmm or ask some of our helpful staff!



Province House National Historic Site

Stroll around Charlottetown and you can't miss it: Province House National Historic Site is under construction. So what's going on with the building known as the "Birthplace of Canada"? Lots! Parks Canada has made major investments into the conservation of this celebrated structure to ensure it is around to welcome many generations to come!



During this necessary period of closure, Parks Canada invites interested visitors to learn about the very first meeting of the Fathers of Confederation at the Charlottetown Conference of 1864 and other stories of Province House through the exploration of some great interactive exhibits and experiences.



Photo credit: Jordan Doiron

Province House National Historic Site Restoration Project

- Tour **The Story of Confederation** at the Confederation Centre of the Arts (adjacent to Province House), which includes an impressive replica of the Confederation Chamber, the award-winning film "A Building of Destiny" about the 1864 Charlottetown Conference and historic vignettes by the Confederation Players.
- Visit **The Story of Confederation kiosk** to find out all about Province House and maybe pose for a photo wearing period costumes at the popular "Green Screen." (Available in July and August, weather permitting.)
- Participate in Parks Canada's **Imagine a Country** experience: share your ideas and vision for a dream country. (Available in July and August.)
- New in 2018 – Take a walk inside the walls with our brand new **Province House: Virtual Reality** experience found at the "Imagine a Country" exhibit. An immersive and interactive tour, this is a way to see this fascinating building like never before!



The Story of Confederation

For more information, go to parkscanada.ca/provincehouse

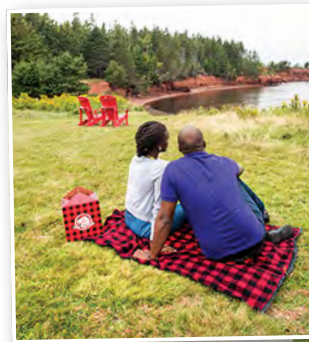
Skmaqn—Port-la-Joye—Fort Amherst National Historic Site

Undoubtedly one of the best hidden gems on Prince Edward Island, Skmaqn—Port-la-Joye—Fort Amherst National Historic Site is located across the harbour from Charlottetown on the Island's south shore. This is a place filled with history and a strong spiritual connection for the Mi'kmaq, Prince Edward Island's indigenous people. It was the setting for powerful stories of friendship between the Mi'kmaq, French and Acadians and also the tragic realities of the Acadian deportation following the arrival of the British.

Looking across its wide open green spaces and out to the harbour passage below, the strategic placement of this site becomes all too clear even if only a few reminders of its dramatic past are visible today. Visitors love this place for its peaceful atmosphere, its stunning harbour views and its extensive network of trails just ripe for exploration. Pack a lunch and your favourite walking shoes and spend a day walking the paths to the past! The trail system at Skmaqn—Port-la-Joye—Fort Amherst National Historic Site consists of over 6 km of scenic trails perfect for hiking or biking.

This summer, Parks Canada and the Mi'kmaq Confederacy of Prince Edward Island are pleased to partner once again to bring alive the Mi'kmaq history of Epekwitk at Skmaqn—Port-la-Joye—Fort Amherst National Historic Site. Join Mi'kmaq Elders on site throughout the summer and be immersed in the stories, history and language of the Mi'kmaq people. Make sure to also check out the traditional Mi'kmaq wigwam located at the site. Step inside and sit awhile: like all those before it, this wigwam was built to share.

With its beautiful natural spaces, equipped kitchen and multi-purpose room and stunning views of Charlottetown, this breathtaking site is one of our most popular ones for weddings, events and celebrations. For more information on hosting your event here, see page 14.



Come Play with Us!

Prince Edward Island National Park and our National Historic Sites have fun discovery programs for all ages from July 2 to September 3.

Make your visit extra memorable by spending some

Summer Fun Schedule

Programs and activities offered from July 2 to September 3

	SUNDAY	MONDAY	TUESDAY
MORNING	FIELD DAY WITH MISS STACY Green Gables Heritage Place 10:00am (French) 10:30am (English)	FIELD DAY WITH MISS STACY Green Gables Heritage Place 10:00am (French) 10:30am (English)	ALONG THE CAVENDISH ROAD Green Gables Heritage Place 10:00am (French) 10:30am (English)
AFTERNOON	BEACH HUT <i>(Bilingual)</i> – Cavendish Beach 1:00pm-4:00pm SUNDAY PICNIC <i>(Bilingual)</i> – Green Gables Heritage Place 2:30pm-4:00pm	SENSATIONAL SANDCASTLES <i>(Bilingual)</i> – Brackley Beach 1:00pm-4:00pm STORY TIME Green Gables Heritage Place 3:00pm (French) 3:30pm (English)	DISCOVERY ZONE <i>(Bilingual)</i> – Greenwich Dunes Trail 1:00pm-3:00pm TREMENDOUS TUESDAYS <i>(Bilingual)</i> – Green Gables Heritage Place 3:00pm-4:00pm
EVENING	CAMPGROUND CEILIDH <i>(Bilingual)</i> – Stanhope Campground 8:30pm-9:30pm (July) 8:00pm-9:00pm (August/ September)	A'TUKEN / TELL STORIES / RACONTER DES HISTOIRES <i>(English)</i> – Cavendish Campground 8:30pm-9:30pm (July) 8:00pm-9:00pm (August)*	
DAILY	GREEN GABLES SITE TOURS – Green Gables Heritage Place July 2- September 3 MEET ANNE SHIRLEY – Green Gables Heritage Place July 2- September 3 <i>(Bilingual)</i> – 10:00am-12:00pm and 1:00pm-4:00pm HERITAGE DEMONSTRATIONS & VIGNETTES – Green Gables Heritage Place July 2- September 3 <i>(Bilingual)</i> – throughout the day IMAGINE A COUNTRY AND PROVINCE HOUSE: VIRTUAL REALITY – Confederation Centre of the Arts (Charlottetown) – Outdoor Plaza July 1 – August 31 <i>(Bilingual)</i> – 10:00am-6:00pm THE STORY OF CONFEDERATION – Confederation Centre of the Arts (Charlottetown) – Upper Foyer July 1 – August 31 <i>(Bilingual)</i> – 9:00am-5:00pm		

PROGRAMS & ACTIVITIES

For location, see schedule.

A'tuken / Tell Stories / Raconter des histoires: Discover the rich culture of the Mi'kmaq people through story, song and dance.

Along the Cavendish Road: Sing along with some "local characters" as you learn about Cavendish's colourful past through story and song.

Arts & Crafts: Join staff for "crafty" fun at Green Gables!

Beach Hut: Drop by for interactive activities, including touch tank & demonstrations.

Campground Ceilidh: Join us fireside for some East Coast entertainment with local storytellers & musicians.

Discovery Zone: Get your hands on some fun, interactive activities that explore the treasures of Greenwich.

Field Day with Miss Stacy: Follow along with Anne's favourite teacher on one of her famous field days.

Fun Friday: Get your imagination going with the day's fun activity. Ask Green Gables staff for details!

Games & Races: Join us for old fashioned fun with Anne and her friends!

Green Gables Site Tours: Get the facts and the fiction about this famous place from one of our knowledgeable guides.

Get Your Yoga On...the Beach! Centre yourself and stretch your mind and body to the sound of the surf with beachside yoga. Enhanced program fee applies (\$7.30 per person)

Heritage Demonstrations & Vignettes: See some activities & chores from days gone by and even try them out yourself!

Imagine a Country: Share your ideas and vision for your dream country at our interactive photobooth.

Meet Anne Shirley: Don't miss your chance to meet the most famous fictional resident of PEI!

Stay connected and text “**OPT IN**” to **902-200-4499** for BamAlert texts about activities, events and more at Parks Canada sites in PEI! (If you ever wish to discontinue these alerts, simply text “**OPT OUT**” to the same number.)

Note: Weather conditions can affect schedules and special events may pop up too!

quality time with our friendly and knowledgeable guides!

WEDNESDAY	THURSDAY	FRIDAY	SATURDAY
GET YOUR YOGA ON... THE BEACH \$7.30 per person <i>(Bilingual)</i> – Cavendish Campground 8:30am-9:30am	GET YOUR YOGA ON...THE BEACH \$7.30 per person <i>(Bilingual)</i> – Stanhope Campground 8:30am-9:30am		
ARTS & CRAFTS <i>(Bilingual)</i> – Green Gables Heritage Place 11:00am-12:00pm	SHANTIES & SHIPWRECKS Green Gables Heritage Place 10:00am <i>(French)</i> 10:30am <i>(English)</i>	STORY TIME Green Gables Heritage Place 10:00am <i>(French)</i> 10:30am <i>(English)</i>	STORY TIME Green Gables 10:00am <i>(French)</i> 10:30am <i>(English)</i>
	DISCOVERY ZONE <i>(Bilingual)</i> – Greenwich Dunes Trail 10:00am-12:00pm		
SENSATIONAL SANDCASTLES <i>(Bilingual)</i> – Cavendish Beach 1:00pm-4:00pm		BEACH HUT <i>(Bilingual)</i> – Cavendish Beach 1:00pm-4:00pm	BEACH HUT <i>(Bilingual)</i> – Brackley Beach 12:00pm-4:00pm
WONDERFUL WEDNESDAYS <i>(Bilingual)</i> – Green Gables Heritage Place 3:00pm-4:00pm	FIELD DAY WITH MISS STACY Green Gables Heritage Place 3:00pm <i>(French)</i> 3:30pm <i>(English)</i>	FUN FRIDAYS <i>(Bilingual)</i> – Green Gables Heritage Place 3:00pm-4:00pm	GAMES AND RACES <i>(Bilingual)</i> – Green Gables Heritage Place 2:30pm-4:00pm
TREE STORY <i>(English)</i> – Stanhope Campground 8:30pm-9:30pm (July) 8:00pm-9:00pm (August)	TREE STORY <i>(French)</i> – Stanhope Campground 8:30pm-9:30pm (July) 8:00pm-9:00pm (August)	TREE STORY <i>(English)</i> – Cavendish Campground 8:30pm-9:30pm (July) 8:00pm-9:00pm (August)	TREE STORY <i>(French)</i> – Cavendish Campground 8:30pm-9:30pm (July) 8:00pm-9:00pm (August)



Province House: Virtual Reality: Take a virtual tour of Province House and see the conservation work taking place inside.

Sensational Sandcastles: Learn tricks of the trade from a local artist and sculpt your own seaside masterpiece.

Shanties & Shipwrecks: Think you can handle a few PEI ghost stories? Let's see! Join us for some spine-tingling tales and shanties.

Story Time: Sit alongside an old time Cavendish resident as they share stories from L.M. Montgomery's famous *Anne of Green Gables*.

Sunday Picnic: Help Anne Shirley make ice cream, take part in an old fashioned race or two and take in some great music!

The Story of Confederation: Take a seat in the replica of the historical Confederation Chamber and take in the film 'A Building of Destiny' about the Charlottetown Conference of 1864. confederationcentre.com/chamber

Tree Story: Join our favourite tree friends as they share stories and songs from days gone by.

Tremendous Tuesdays: Get your imagination going with the day's fun activity. Ask Green Gables staff for details!

Wonderful Wednesdays: Get your imagination going with the day's fun activity. Ask Green Gables staff for details!



Brackley Beach



Contact Information

Mailing Address

2 Palmers Lane
Charlottetown, PE
C1A 5V8

General Information

902-672-6350 or
1-888-773-8888
pnipe.peinp@pc.gc.ca
parksCanada.gc.ca/pei
facebook.com/peinationalpark
twitter.com/ParksCanadaPEI

Campground Reservations

reservations.parksCanada.gc.ca
1-877-RESERVE
(1-877-737-3783)
TTY: 1-866-787-6221

Emergency Services

Police/Fire/Ambulance: 911
Parks Canada
Emergency Dispatch:
1-877-852-3100
Police-TTY: 902-566-7155

GPS Coordinates

GPS Coordinates for Popular Locations

Ardgowan NHS	-63.126354	46.251978
Brackley Beach	-63.201473	46.429337
Cavendish Beach	-63.391616	46.498108
Cavendish Campground	-63.407655	46.496795
Dalvay-by-the-Sea Hotel	-63.073213	46.414771
Dalvay Administration	-63.074054	46.415698
Green Gables Heritage Place	-63.382113	46.487786
Greenwich Interpretation Centre	-62.681721	46.444769
Oceanview	-63.381325	46.4993
Stanhope Campground	-63.110329	46.422453
Skmaqn—Port-la-Joye—Fort Amherst NHS	-63.1354	46.195416