



Prince Edward Island  
National Park

# Visitor Guide

## 2016



# Table of Contents

- 3 Top 10 Parks Canada Experiences in PEI
- 5 Three Unforgettable Locations – One Amazing National Park
- 6 Entry Pass Information
- 7 Camping at Cavendish Campground
- 8 Camping at Stanhope Campground
- 9 Experience the Authentic oTENTik
- 11 Cavendish-North Rustico Map
- 13 Brackley-Dalvay Map
- 15 Robinsons Island Map
- 16 Greenwich Map
- 17 Come Play With Us! Summer Fun Schedule
- 19 Unforgettable Beaches
- 21 Waiting for You at Green Gables



## Contact Information

**Mailing Address**  
2 Palmers Lane  
Charlottetown, PE  
C1A 5V8

**General Information**  
902-672-6350 or 1-888-773-8888  
pripe.peinp@pc.gc.ca  
parksCanada.gc.ca/pei  
facebook.com/peinationalpark  
twitter.com/ParksCanadaPEI

**Campground Reservations**  
reservations.pc.gc.ca  
1-877-RESERVE  
(1-877-737-3783)  
TTY: 1-866-787-6221

**Emergency Services**  
Police/Fire/Ambulance: 911  
Parks Canada Emergency Dispatch:  
1-877-852-3100  
Police-TTY: 902-566-7155

## Welcome

Now that you've arrived on our shores, set your watch to 'Island Time' and take a deep breath.

We are proud to be your hosts. As locals who share the best kept secrets about this magical place, we are the stewards who work to ensure that these pristine beaches and vibrant landscapes will remain as storybook perfect as you see them today.

The government of Canada is making significant infrastructure investments in our national historic sites, national parks and national marine conservation areas. These investments represent the largest federal infrastructure plan in the 104-year history of Parks Canada.

Across Parks Canada places in PEI, investments in visitor infrastructure – such as trails, priority day-use areas and campgrounds, as well as highways and bridges – will ensure the quality and reliability of visitor offers and continue to allow Canadians to connect with nature.

As a result of these investments, when visiting Prince Edward Island National Park in 2016, you may encounter construction zones, reduced services and temporary closures while we complete this important work. Please plan ahead before you travel to ease inconveniences. For updates on infrastructure projects, please be sure to visit our website at: [pc.gc.ca/peinp-fiip](http://pc.gc.ca/peinp-fiip) or call (902) 672-6350 for more information.

These infrastructure projects will result in long-term benefits and improved visitor experience at Parks Canada places. Parks Canada would like to thank visitors and Islanders for their patience as we complete this important work.

**Welcome to Prince Edward Island National Park. Turn the page and embark on your 2016 Island adventure.**



## 10 UNFORGETTABLE, NOT-TO-BE-MISSED EXPERIENCES WITH PARKS CANADA ON PEI

**1** Marvel at the rugged, red sandstone cliffs that run along the Island's North Shore. There are countless great places to stop along the Gulf Shore Parkway between North Rustico and Cavendish for fabulous photos.

**2** Build a seaside palace. Sandsculpting programs take place at both Cavendish and Brackley beaches throughout the summer. Pick up some building tips from our sculptor-in-residence and create your very own castle by the sea.

**3** Become an "Xplorer"! Kids are invited to take part in the "Xplorer" challenge, completing fun activities all over PEI National Park and at Green Gables Heritage Place.

**4** Experience *The Story of Confederation* at Confederation Centre of the Arts, located next to Province House National Historic Site in Charlottetown. Visit the impressive replica of the Confederation Chamber, where the Fathers of Confederation met. Watch Parks Canada's new video, *A Building of Destiny*, which will transport you back in time to the first eight days in September 1864. This is when history was made at Province House that would change the face of North America.

**5** Opt for oTENTik! Even the most reluctant camper can enjoy the outdoor life in one of our oTENTiks! The perfect blend of a tent and cabin, this awesome accommodation offers something unique for campers of all kinds. Even if you don't know your tent pegs from tree roots, we've got you covered.



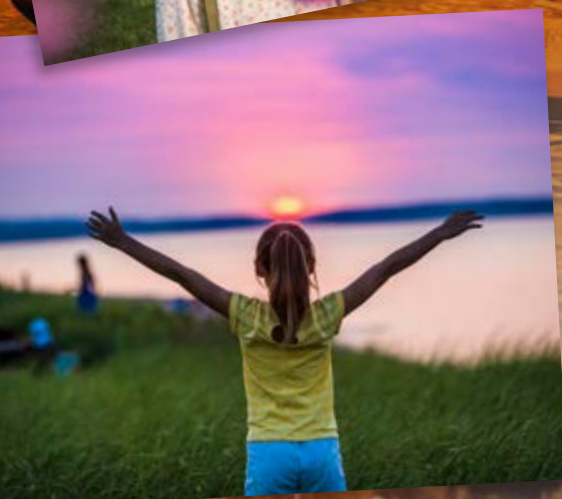
**6** Sing along with colourful characters at an evening interpretive campfire program. Hear stories of the past and present and sample the irresistible, toe-tapping sounds of PEI at Stanhope or Cavendish Campground.



**7** Meet “Anne Shirley”, PEI’s most famous fictional resident. Stories of spunky, carrot-topped Anne have entertained readers for generations. Explore the grounds at Green Gables Heritage Place and keep your eyes open for a glimpse of braids and freckles!



**8** Experience a virtual tour of Province House National Historic Site through the Official Parks Canada Province House App; download the FREE app at [parksCanada.gc.ca/explora-app-ph](https://parksCanada.gc.ca/explora-app-ph)

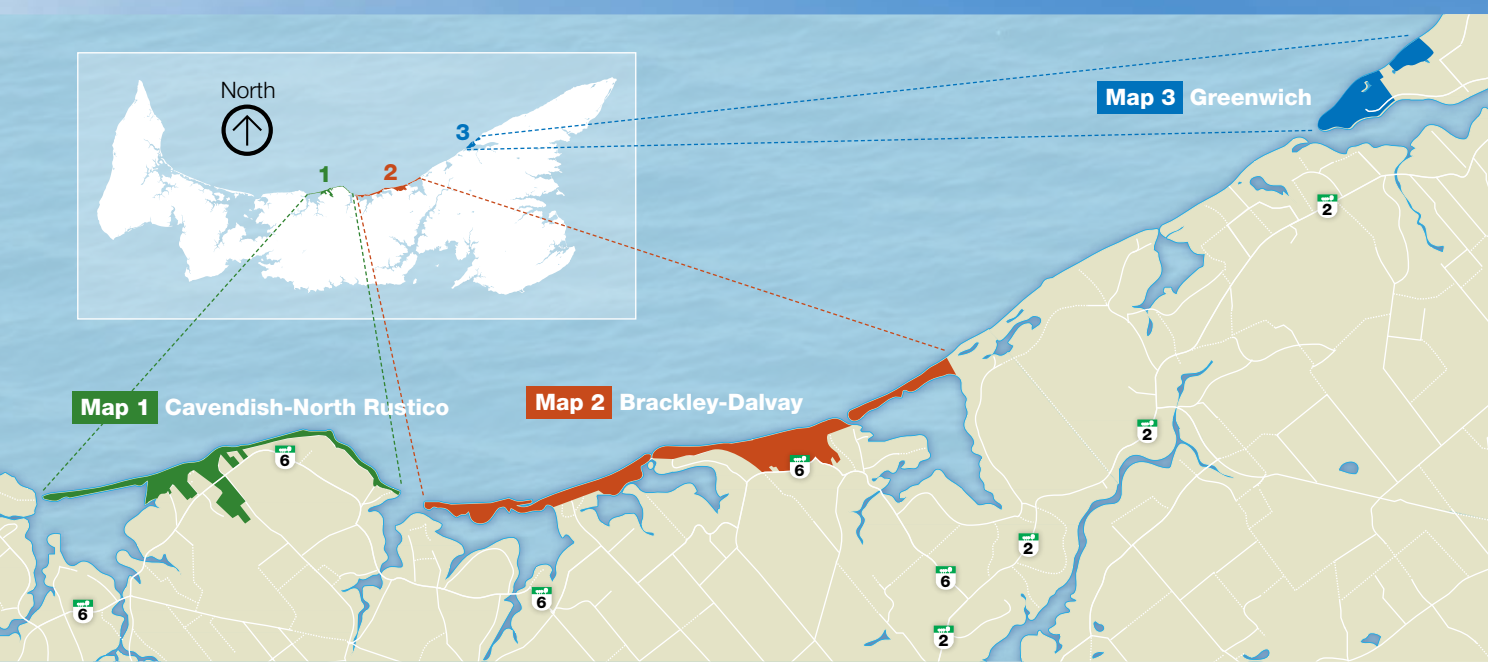


**9** Dive right in to the warmest waters north of the Carolinas. Our supervised beaches are some of the most popular swimming areas on the Island. Our beach wheelchairs are available for visitor use at Cavendish Campground Beach, Brackley Beach Complex and Stanhope Beach Complex. See p.19 for more information. *TIP: Visit Greenwich Beach for a more secluded experience!*

**10** Rock the “R.I.T.S.”! Bring along your bike and try out the Robinsons Island Trail System. Learn to Mountain Bike on our multi-use trail that includes more than ten technical features designed for beginner and intermediate mountain bikers.



# Three Unforgettable Locations, One Amazing National Park



## Services & Facilities

Services and facilities in Prince Edward Island National Park are available from May 20th - October 10th.  
Enhanced services and programming are available from July 1st - September 5th.

For more information on operating hours and dates, please visit our website at [parkscanada.gc.ca/pei](http://parkscanada.gc.ca/pei)

## 2016 Dates of Operation

<p><b>CAVENDISH BEACH COMPLEX</b> May 16 – September 30</p>
<p><b>CAVENDISH CAMPGROUND</b> June 8 – September 11</p>
<p><b>BRACKLEY BEACH COMPLEX</b> May 16 – October 19</p>
<p><b>STANHOPE CAMPGROUND</b> June 8 – September 29</p>
<p><b>GREENWICH INTERPRETATION CENTRE</b> June 15 – September 5</p>



## Day Pass

### Stay and Play All Day!

*This provides you with unlimited access to PEI National Park from the time of purchase until 12 noon the following day.*

Adult (17-64)	<b>\$7.80</b>
Senior (65+)	<b>\$6.80</b>
Youth (6-16)	<b>\$3.90</b>
Child (0-5)	<b>FREE</b>
Family/Group (up to 7 people in one vehicle)	<b>\$19.60</b>

## 7-Day Pass

### A Full Week of Beaches & Green Gables, Too!

*This combination pass provides you with unlimited access to PEI National Park and Green Gables Heritage Place for seven consecutive days.*

Adult (17-64)	<b>\$20.00</b>
Senior (65+)	<b>\$18.00</b>
Youth (6-16)	<b>\$10.00</b>
Child (0-5)	<b>FREE</b>
Family/Group (up to 7 people in one vehicle)	<b>\$50.00</b>

## Season Pass

### Come and Go All Season Long!

*As a season pass holder you get unlimited access to PEI National Park from June until September.*

Adult (17-64)	<b>\$39.20</b>
Senior (65+)	<b>\$34.30</b>
Youth (6-16)	<b>\$19.60</b>
Child (0-5)	<b>FREE</b>
Family/Group (up to 7 people in one vehicle)	<b>\$98.10</b>

## Discovery Pass

### The Ultimate Year-Long Ticket to Adventure!

*This annual pass gives you unlimited access to more than 100 national parks, national historic sites and national marine conservation areas all across Canada.*

Adult (17-64)	<b>\$67.60</b>
Senior (65+)	<b>\$57.90</b>
Youth (6-16)	<b>\$33.30</b>
Child (0-5)	<b>FREE</b>
Family/Group (up to 7 people in one vehicle)	<b>\$136.40</b>

#### Shoulder season rates available.

Please refer to our website for pricing:  
[parkscanada.gc.ca/peinp-fees](http://parkscanada.gc.ca/peinp-fees)



**Entry and service fees are charged at most national parks and national historic sites, where revenues are kept to support visitor services and facilities. This means that every time you visit a park or site you are investing in its future — and in a legacy for future generations.**

# Come **STAY** with us!



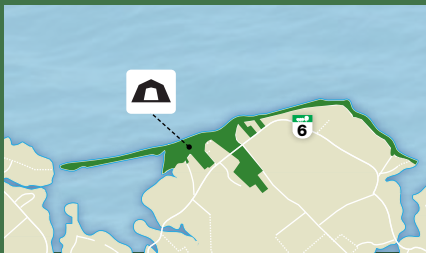
Check out the **oTENTik** camping experience!

See p.9 for full details

## Cavendish Campground

357 Grahams Lane, Cavendish

For reservations call 1-877-737-3783  
or visit [reservation.pc.gc.ca](http://reservation.pc.gc.ca)



A large, fully-serviced campground located just steps from the ocean in the heart of Cavendish. Enjoy the on-site supervised beach, spectacular cycling and walking trails, fascinating learning activities and family-friendly sandcastle art programs on the beach. When the sun sets, immerse yourself in Island culture through music and stories at our evening campfire programs. Check out oTENTiks, a unique accommodation option that blends the fun of a tent with the convenience of a cabin. Visit page 9 to learn more! Select facilities and sites are accessible.

## Services June 8 - September 11

Showers	Laundry	Supervised beach	Ice available	Playground	Fire pits
✓	✓	✓ June 30 - Aug 28	✓	✓	All sites

## Pricing June 8 - September 11

*Please Note: Park fees apply in addition to camping fees. Shoulder season rates also available. Please visit [parkscanada.gc.ca/peinp-fees](http://parkscanada.gc.ca/peinp-fees)*

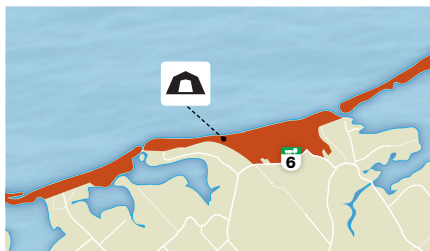
Unserviced with ocean view	Serviced with water, electricity	Serviced with water, electricity & sewer	oTENTik See page 9
\$27.40	\$32.30	\$35.30	\$120.00



## Stanhope Campground

983 Gulf Shore Parkway, Stanhope

For reservations call 1-877-737-3783  
or visit [reservation.pc.gc.ca](http://reservation.pc.gc.ca)



A large, scenic campground surrounded by open dunescapes and minutes away from bustling Covehead Harbour. Just 20 minutes from the capital city of Charlottetown, Stanhope Campground is only 1 km away from a supervised, wheelchair-accessible beach and seaside trails. All facilities and select sites are accessible.

### Services June 8 - September 29

Showers	Laundry	Supervised beach	Ice available	Playground	Fire pits
✓	✓	1 km June 29 - Aug 28	✓	✓	All sites

### Pricing June 8 - September 29

*Please note: Park fees apply in addition to camping fees. Shoulder season rates also available. Please visit [parkscanada.gc.ca/peinp-fees](http://parkscanada.gc.ca/peinp-fees)*

Unserviced	Serviced with water, electricity	Serviced with water, electricity & sewer	oTENTIK see page 9
\$27.40	\$32.30	\$35.30	\$120.00



# Try the Authentic **oTENTik** –



## Check out Prince Edward Island National Park's newest accommodation option on the North Shore – the authentic oTENTik!

A structure that blends the fun of a tent with the convenience of a cabin, oTENTik is an appealing option for those who want a camping experience without the hassle. Take away the need for piles of supplies and you've got a fuss-free vacation in the making!

The 6 oTENTiks at Cavendish Campground and 8 NEW oTENTiks at Stanhope Campground showcase the very best that PEI National Park has to offer. Each oTENTik is equipped with its own parking area, picnic table, BBQ, fire pit and more. Exclusive to Parks Canada, oTENTiks have been popping up at campgrounds across the country and are quickly becoming a popular choice for visitors. Ditch the gear – opt for an oTENTik!

### What to bring:

- Sleeping bags, blankets, pillows and toiletries
- Food, drinks and a water container
- Slippers or indoor shoes - the first rule of keeping a clean tent is to remove outdoor footwear
- Matches or lighter to start campfire
- Camping chairs



# More camping... less 'inTENTs'



## oTENTik features

- Electricity (with 2 outlet plugs)
- Sleeping pads for 6 people
- A table and seating for 6 people
- Dishes and cutlery for 6 people
- Interior lighting
- Fire extinguisher, smoke and carbon monoxide detectors
- Electric fireplace
- Electric fan
- Two battery-powered lanterns
- Broom and dustpan
- Spacious deck
- Stainless steel BBQ and accessories (tongs, brush, scraper, etc)
- Parking for 2 vehicles, space permitting

## On each campsite

- Fire pit
- Picnic table
- Two adult and two child Adirondack chairs
- Potable water available



## Nearby

- A large kitchen shelter
- Washrooms
- Coin-operated laundry
- Firewood for purchase
- Beach access and supervised swimming area
- Playground equipment and trails for hiking and cycling

*Please note: there is no plumbing or running water in the tents.*

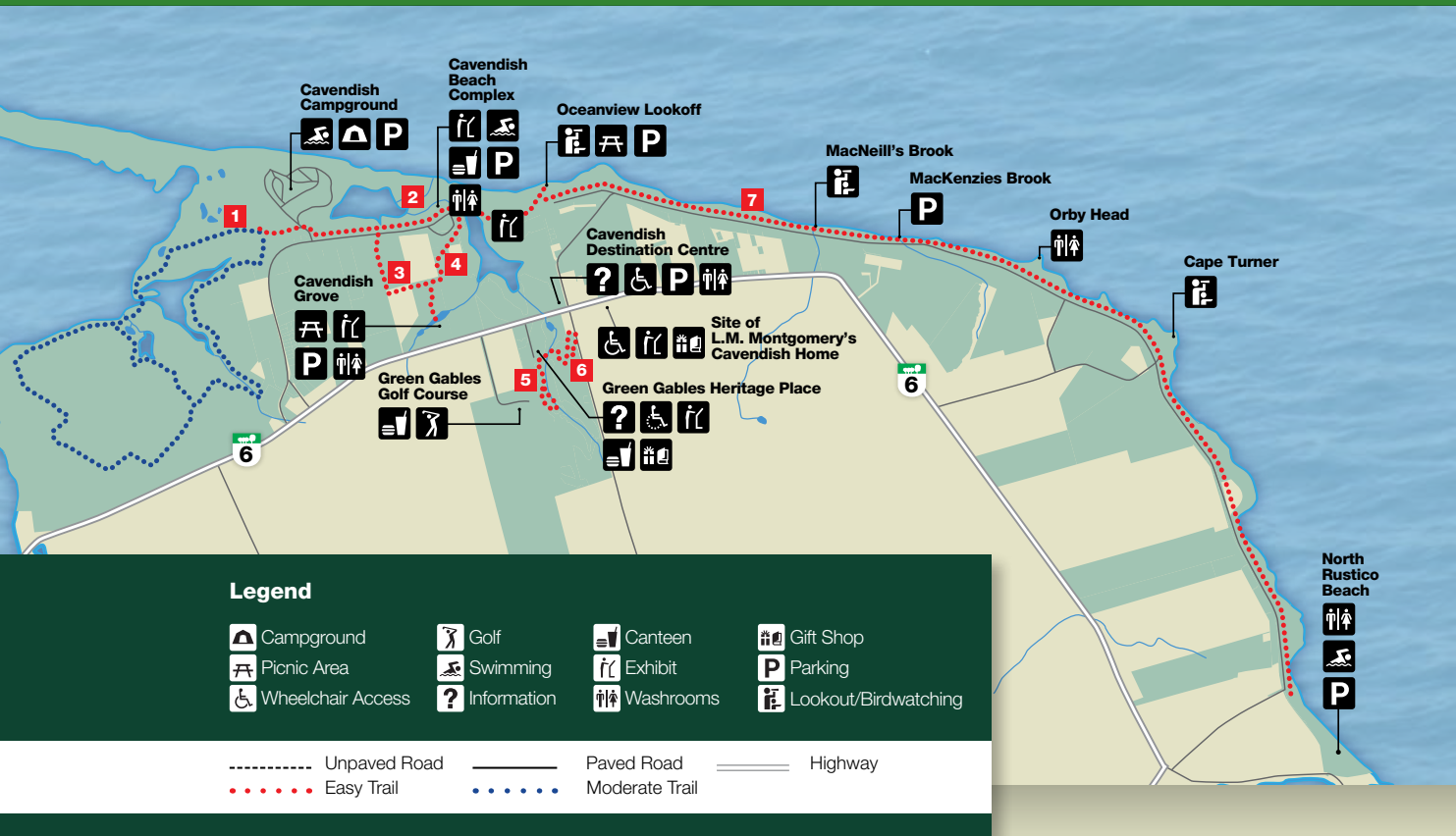
*Two of our units at each location are accessible, with accessible washrooms and showers nearby.*



# CAVENDISH-NORTH RUSTICO MAP

Sought out by visitors for decades for its beautiful sandy beaches, Cavendish has become famous around the world for its connections to author L.M. Montgomery and her stories about Anne Shirley, the spunky, red-headed heroine of

'Anne of Green Gables'. A favourite stop for visitors all summer long, Cavendish through to North Rustico offers not only the beautiful beach but also some of the best views around of the signature rugged, red sandstone cliffs of PEI's North Shore.



## Ready, Set, Discover!

**1 Homestead Trail** *Moderate Trail*  
6.3 km or 8.4 km, return. Stacked loop with 2 routes. Suitable for hikers or cyclists. Passes through forest and farmland along the shores of New London Bay. Best for hybrid or mountain bikes.

**2 Cavendish Dunelands** *Easy Trail*  
2.3 km, one-way. Stunning views of sand dunes and freshwater ponds. Links to the Homestead Trail and Gulf Shore Way West. Suitable for most bikes. Please walk your bike across the boardwalk.

**3 Clarks Lane** *Easy Trail*  
1.2 km, one-way. Starts at Cavendish Grove and connects to Cavendish Dunelands and Cavendish Beach trails. Suitable for most bikes.

**4 Cavendish Beach Trail** *Easy Trail*  
1.1 km, one-way. Passes through a sugar maple stand before reaching Cavendish Beach and connecting to Cavendish Dunelands trail. Suitable for most bikes.

**5 Balsam Hollow** *Easy Trail*  
0.8 km, return. Part of Green Gables Heritage Place, this trail begins with Lovers' Lane and wanders through woodlands and follows a brook. Green Gables Heritage Place entry fees apply.

**6 Haunted Wood** *Easy Trail*  
0.9 km, loop. Located at Green Gables Heritage Place, this wooded area served as the inspiration for the Haunted Wood that appeared in *Anne of Green Gables*. Green Gables Heritage Place entry fees apply. Passes near the Cavendish Cemetery, resting place of L.M. Montgomery, and connects to the Site of L.M. Montgomery's Cavendish Home (separate entry fee or combination pass required).

**7 Gulf Shore Way West** *Easy Trail*  
8.5 km, one-way. Trailheads at Oceanview Lookoff and North Rustico park entry gate. Paved, multi-use trail skirting the top of the red sandstone cliffs with magnificent views of Gulf of St. Lawrence. This trail is a perfect conduit from Cavendish Campground to North Rustico, or anywhere in between. Suitable for most bikes.



## Stay & Play

### **Cavendish Campground**

Full service campground with unserviced, 2 & 3 way sites available. Playground, kitchen shelters, supervised beach (June 30 - August 28), family programming and oTENTikS available (See p.9).

### **Cavendish Beach Complex**

Open May 16 - September 30. Washrooms, showers and canteen services available. Beach supervised from June 29 - September 5. Trailheads for Cavendish Dunelands & Cavendish Beach Trail.

### **Oceanview Lookoff**

The name says it all! Bring your camera and capture some breathtaking views with your lens. Parking, picnic area, observation platform and access to Cavendish Dunelands & Gulf Shore Way West.

### **Cavendish Grove**

Beautiful picnic area suitable for groups of all sizes. Trailheads for Cavendish Beach Trail, Clarks Lane & Cavendish Dunelands. Signage along the trails highlights natural & cultural heritage of the area.

### **Green Gables Heritage Place**

Part of Lucy Maud Montgomery's Cavendish National Historic Site. Features the original farmhouse that inspired the setting of *Anne of Green Gables*, exhibits, a short film about the author's life and more! Gift shop & snack bar available May - October. Family-friendly programming in July/August. See p. 21 for more information.

### **Site of L.M. Montgomery's Cavendish Home**

Part of Lucy Maud Montgomery's Cavendish National Historic Site. Features the restored foundation of the author's homestead, bookshop and walking trail with signage detailing site history. Privately operated; combination pass available granting the holder admission to both this site and Green Gables Heritage Place.

### **Green Gables Golf Course**

Privately operated 18-hole golf course. Dining services available.

### **North Rustico Beach**

Open June 14 - September 15. Supervised from June 30 - August 21. Washroom facilities and parking area.

Due to site upgrades and construction, sections of the park may be inaccessible. Visit [pc.gc.ca/peinp-fiip](http://pc.gc.ca/peinp-fiip) or call (902) 672-6350 for full schedule and information.

# BRACKLEY-DALVAY MAP

Beautiful Brackley Beach is a popular summer destination for many local Island beach-goers for its fine sand and its proximity to Charlottetown. This region also has many lovely smaller beaches, which often do not see nearly as much traffic as the larger ones. Keep this in mind if you

like a quieter place for your beach day! Covehead Harbour, Covehead Lighthouse and Dalvy-by-the-Sea National Historic Site are also must-see stops along this stretch of coastline. Be sure to check out the multi-use trail system at Robnsons Island!



## Ready, Set, Explore!

**1 Gulf Shore Way East** *Easy Trail*  
 12 km, one-way. Stretching from Brackley to Dalvay, this paved, multi-use trail is perfect for walking, jogging, cycling or rollerblading. Take in the beautiful views of sand dunes, salt marshes and forests from a whole new point-of-view! Suitable for all bikes. Due to site upgrades and construction, sections of this trail may be inaccessible. Visit [pc.gc.ca/peinp-fiip](http://pc.gc.ca/peinp-fiip) or call (902) 672-6350 for full schedule and information.

**2 Farmlands** *Easy Trail*  
 2.7 km, return. A path taking you along fields, hedgerows and mixed woodlands. Part of this trail was once a road – the oldest road in PEI! Hybrid or mountain bikes recommended.

**3 Bubbling Springs** *Easy Trail*  
 2.2 km, return. A favourite among birdwatchers, this path has lookouts that offer great views of waterfowl at Long Pond. Hybrid or mountain bikes recommended.

**4 R.I.T.S. (Robnsons Island Trail System)** *Easy Trail*  
 5 km, stacked loop. 12 optional technical features. Suitable for beginner to intermediate mountain bikers. Picnic area, observation stations and beach access. See page 15 for more information.



# BRACKLEY-DALVAY

## Stay & Play

### Stanhope Campground

Full service campground with unserviced, 2 & 3 way sites available. Many sites are accessible. Also new this year, oTENTiks (See p. 9) are available at Stanhope Campground. Enclosed kitchen shelters, washrooms, playground and family programs from July 2 - September 5. More details on p. 8.

### Brackley Beach Complex

Open May 16 - October 19, Brackley Beach Complex has wheelchair beach access, picnic area, washrooms, large parking area and canteen services throughout July & August. Beach supervised from June 29 - September 5.

### Stanhope Beach Complex

Open June 14 - September 15, Stanhope Beach Complex has wheelchair beach access, washrooms, NEW playground, picnic area, and parking. Beach supervised from June 29 - August 28.

### Ross Lane Beach

Open May 16 - September 30, Ross Lane Beach has parking and picnic areas. Beach supervised from June 30 - August 21.

### Dalvay-by-the-Sea National Historic Site

Once a summer home, this beautiful heritage property is now a 25-room hotel with eight 3-bedroom cottages. A popular wedding destination with dining and event facilities and other guest services, including bicycle rentals.

Due to site upgrades and construction, sections of the park may be inaccessible. Visit [pc.gc.ca/peinp-fiip](http://pc.gc.ca/peinp-fiip) or call (902) 672-6350 for full schedule and information.



**Please note:** Cycling helmets are mandatory on Prince Edward Island.

## R.I.T.S. – ROBINSONS ISLAND TRAIL SYSTEM MAP

Prince Edward Island National Park is putting on the R.I.T.S.! Welcome to the Robinsons Island Trail System, also known as the “R.I.T.S.”, - 5 kilometers of multi-use trail and the newest addition to the Park’s outdoor offer. Located on a small island that was once home to a popular campground, this family-friendly trail has options for hikers and bikers of all levels. Designed as a “stacked loop”, explorers can choose a shorter or longer route depending on skill level or time constraints.

The trail has been designed with mountain bikers in mind and features 12 technical trail challenges located in spurs that break off of the main trail. An afternoon on the R.I.T.S. is an outdoor adventure meant to challenge beginner to intermediate mountain bikers. Those who dare not test their skills on the ramps and teeter totters need not shy away; just skip the branches and stick to the main trail for a beautifully scenic cycling adventure.

### Legend

- Bikers' trail direction
- Hikers' trail direction
- Easy bike feature
- Intermediate bike feature
- Observation point
- Parking
- Beach access
- Road
- Shared trail
- Multi-directional trail





# GREENWICH MAP

Home to the biggest sand dunes on Prince Edward Island! Greenwich has a long history with connections to Mi'kmaq and Acadian culture, and an ever-evolving tale of the shaping and re-shaping of its landscapes through wind and waves.

The path to Greenwich may be a bit less traveled than other areas of PEI National Park, but it's ripe for discovery through exploration of its trails, beaches and beautiful interpretation centre.



## Legend

Picnic Area	Exhibit	Swimming
Wheelchair Access	Washrooms	Parking
Information	Lookout/Birdwatching	
Unpaved Road	Paved Road	
Easy Trail	Moderate Trail	

Due to site upgrades and construction, sections of the trails in Greenwich may be inaccessible. Visit [pc.gc.ca/peinp-fiip](http://pc.gc.ca/peinp-fiip) or call (902) 672-6350 for full schedule and information.

## Stay & Play

### Greenwich Interpretation Centre

Open June 15 - September 5. This accessible building has washrooms, parking, visitor information, interactive displays and a fascinating film about the history of the area.

### Greenwich Beach

Open June 13 - September 15. Supervised from June 30 - August 21. Parking, picnic area, kitchen shelter and lots of beautiful views!

## Ready, Set, Experience!

### 1 Havre Saint Pierre Easy Trail

1.1 km, return. This short trail takes you along the shores of beautiful St. Peters Bay. The flat, natural surface trail is partially wheelchair accessible.

### 2 Tlaqatik Moderate Trail

4.8 km, return. Experience the history of the area, and the story of human interaction with the land over time, as you journey along the edges of St. Peters Bay. If you choose to cycle, then hybrid or mountain bikes are recommended.

### 3 Greenwich Dunes Moderate Trail

4.8 km, return. Travel across homestead fields, through a forest stand, and over Bowley Pond on a floating boardwalk, as you journey toward your first sight of the majestic Greenwich Dunes. Only part of this trail can be explored by bike. You can travel as far as the junction with the Tlaqatik Trail and then the rest must be done on foot. Bike locks are available to borrow at the Greenwich Interpretation Centre. If you choose to cycle, then hybrid or mountain bikes are recommended.



# COME PLAY WITH US!

## Summer Fun Schedule

Prince Edward Island National Park has fun discovery programs for all ages from July 2nd - September 5th. Make your visit extra memorable by spending some quality time with our friendly and knowledgeable guides! Be sure to ask at entry gates about the day's activities as weather can affect schedules and special programs may pop up too!



## Programs and Activities July 2 - September 5

	SUNDAY	MONDAY	TUESDAY	WEDNESDAY	THURSDAY	FRIDAY	SATURDAY
MORNING	<b>Mornings with Parka</b> <i>Bilingual</i> Cavendish Campground 10:00am-11:00am			<b>Eyes to the Skies</b> <i>Bilingual</i> Cavendish Campground 9:30am-11:30am			<b>Mornings with Parka</b> <i>Bilingual</i> Stanhope Campground 10:00am-11:00am
AFTERNOON	<b>Beach Hut</b> <i>Bilingual</i> Brackley Beach 12:00pm-4:00pm	<b>Sensational Sandcastles</b> <i>Bilingual</i> Cavendish Beach 1:00pm-4:00pm		<b>Sensational Sandcastles</b> <i>Bilingual</i> Brackley Beach 1:00pm-4:00pm		<b>Beach Hut</b> <i>Bilingual</i> Cavendish Beach 12:00pm-4:00pm	<b>Sensational Sandcastles</b> <i>Bilingual</i> Cavendish Beach 1:00pm-4:00pm
	<b>Beach Detectives</b> <i>Bilingual</i> Greenwich Beach Complex 2:00pm-3:00pm			<b>Beach Detectives</b> <i>Bilingual</i> Greenwich Beach Complex 2:00pm-3:00pm			<b>Beach Detectives</b> <i>Bilingual</i> Greenwich Beach Complex 2:00pm-3:00pm
EVENING	<b>Campground Ceilidh</b> <i>Bilingual</i> Cavendish Campground or Stanhope Campground 8:00pm-9:00pm July 7:30pm-8:30pm August/September. Visit website for more details		<b>Haut-de-forme à remonter le temps</b> <i>French</i> Cavendish Campground 8:00pm-9:00pm July 7:30pm-8:30pm August/September	<b>Top Hat Time Machine</b> <i>English</i> Stanhope Campground 8:00pm-9:00pm July 7:30pm-8:30pm August/September	<b>Haut-de-forme à remonter le temps</b> <i>French</i> Stanhope Campground 8:00pm-9:00pm July 7:30pm-8:30pm August/September		<b>Mi'kmaq Legends</b> <i>English</i> Cavendish Campground 8:00pm-9:00pm July 7:30pm-8:30pm August/September

## Sensational Sandcastles

Bring the family and join renowned PEI artist, Maurice Bernard, to build spectacular creations in the sand. Once you've learned the tricks of the trade you'll be amazed at how easy it is to turn your family members into master sandcastle builders!

## Beach Detectives

You never know what you'll find washing up along the shores of Greenwich Beach. Once you know what to look for, you'll be amazed at the fascinating array of life that calls this part of Prince Edward Island home. Join one of our expert beachcombers and discover the treasures just under your feet.

## Mi'kmaq Legends

Enjoy an evening of live theatre as Atlantic Canada's only Aboriginal theatre troupe presents five traditional Mi'kmaq legends. Each legend has been passed down from generation to generation and showcases some of the rich cultural heritage of the Mi'kmaq people. This is a night you won't want to miss!

## Beach Hut

Need a break from lying on the beach? Drop by the Beach Hut and explore some fascinating reasons why the North Shore is more than just a place to relax. Experience a whole summer's worth of interactive activities, including nature demonstrations and a touch tank filled with sea critters!

## Campground Ceilidh

If there are two things Islanders love, it's storytelling and great East Coast music! Grab a flashlight and a blanket and join us by the campfire to experience a whole new side of North Shore culture with local Island musicians and storytellers.

## Mornings with Parka

Bring the kids and join Parka, Parks Canada's mascot, to discover the wonders of Prince Edward Island National Park. Participate in some fun activities and become a member of "Club Parka"! Youth between the ages of 6-11 years can also get started on our new Xplorers program.

## Eyes to the Skies

Ever wonder what the sun really looks like? Come join our guides and take a peek through a dedicated solar telescope as we shed some light on our closest star! Remember, you should never look at the sun through a regular telescope, with binoculars or the naked eye.

## Top Hat Time Machine

Join us for a different look into how Canada came to be and help us show a time-travelling "Father" some good old East Coast hospitality. You never know, the circus might still be in town! Be sure to bring a blanket and a flashlight.



# UNFORGETTABLE Beaches



## 2016 Beach Services Schedule

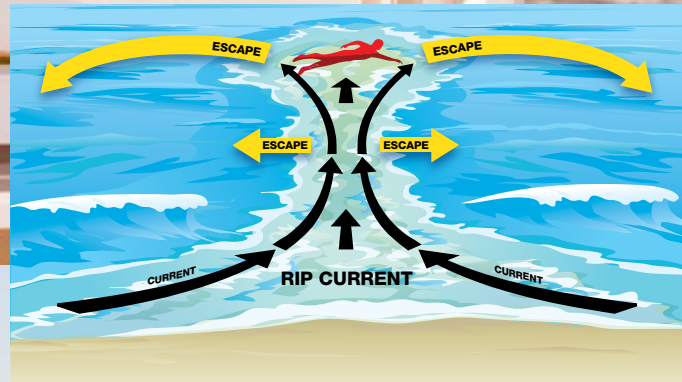
Beach Facilities	Dates of Supervision	Change Rooms	Showers	Drinking Water	Flush Toilets	Composting Toilets	Kitchen Shelters	Canteen	Exhibits	Beach Wheelchairs
Brackley Beach	June 29-Sept 5	✓	✓	✓	✓			✓	✓	✓
Cavendish Beach	June 29-Sept 5	✓	✓	✓	✓			✓	✓	✓
Cavendish Campground Beach (for Park Campers)	June 30-Aug 28	✓	✓	✓	✓		✓			✓
Greenwich Beach	June 30-Aug 21	✓				✓	✓		✓	
North Rustico Beach	June 30-Aug 21	✓		✓	✓					
Ross Lane Beach	June 30-Aug 21					✓				
Stanhope Beach	June 29-Aug 28	✓	✓	✓	✓		✓		✓	✓

Brackley Beach complex, Stanhope Beach complex, and Cavendish Campground Beach all offer supervised swimming, accessible beach access and designated parking for those with limited mobility. Special beach wheelchairs are available at each location. To reserve, please call 902-672-6350.

 **Domestic animals** are prohibited from all beaches from April 1 to October 15 for reasons of public health, safety and conservation.

**Chicks on the beach!** Please be aware of possible beach closures as a conservation effort to protect the endangered Piping Plover.





## Rip Current Safety

Learn how to break the grip of the rip

Rip currents are powerful, fast-moving seaward currents that can pull even the strongest swimmers out to sea.

Be safe: Know how to swim, never swim alone, and when in doubt, don't go out.

### If you become caught in a rip current:

- Don't fight the current
- Swim out of the current, then to shore
- If you can't escape, float or tread water
- If you need help, call or wave for assistance

Parks Canada and its service providers make every reasonable effort to mark areas that are known to have rip currents; however, there may be other such areas that are not marked.



## Sand Dunes are Sensitive Areas

Dunes cannot exist without marram grass. The grass blades trap sand blown inland from the beach; this simple process results in dune formation. Marram grass cannot withstand trampling and is easily killed by footsteps. When the grass is gone and dune trails are created, it weakens the dune. Sand becomes unstable. Dunes start to break apart and lose shape. Once degraded by trails, dunes and inland areas are at higher risk to destruction from sea related storm damage.

Do your part to keep dunes healthy: stay on designated beach access routes. Do not trample marram grass, climb dunes or use trails through dunes. Remember PEI National Park welcomes thousands of people to its beaches each season. Healthy dunes rely on visitors knowing that every step counts! Steps not taken on a dune help to keep it healthy or heal it; steps taken on a dune harm it.

# Waiting for you at **GREEN GABLES HERITAGE PLACE**

**Take a walk through the setting of Canada's bestselling novel of all time, *Anne of Green Gables*!**

Written by Island author L.M. Montgomery, *Anne of Green Gables* has found its way into the hearts of millions of readers. It tells the tale of Anne Shirley, a spunky, redheaded orphan who comes to live with an elderly brother and sister at their family home called "Green Gables". Today, visitors from around the world flock to Green Gables Heritage Place to immerse themselves in the storybook landscape, find the source of Montgomery's inspiration, and fulfill a lifelong dream of seeing the places they read about first hand.

The house and grounds at Green Gables Heritage Place have been lovingly restored and decorated in exquisite detail to match the world Montgomery described in the story. Begin your visit with a short film and the exhibits at the Visitor Centre, including early editions of the novel and the typewriter Montgomery used to craft her literary masterpieces. Continue your journey through the restored house and barns and take a walk along Lovers' Lane and the Haunted Wood trail. Don't forget to take in an interpretive activity and keep an eye out for Anne strolling around the barnyard. Cap it all off with a delicious raspberry cordial or an ice cream at the Butter Churn Café.



Entry and service fees are charged at most national parks and national historic sites, where revenues are kept to support visitor services and facilities. This means that every time you visit a park or site you are investing in its future — and in a legacy for future generations.

Daily Entry Fees	May 1 – June 30 & September 6 – October 31	July 1 – September 5
<b>Adult</b> (17 - 64 years)	\$6.30	\$7.80
<b>Senior</b> (65+ years)	\$5.40	\$6.55
<b>Youth</b> (6 -16 years)	\$3.15	\$3.90
<b>Child</b> (0 - 5 years)	FREE	FREE
<b>Family</b> (Up to 7 people, with a maximum of 2 adults)	\$15.70	\$19.60

### Hours of Operation

**May 1 – October 31:** 9:00am – 5:00pm daily  
**April 15 – 30 & November 1 – 30:** Open by appointment only. Special fees apply.



### Contact Us

(902) 963-7874  
 greengables.info@pc.gc.ca  
 pc.gc.ca/peinp-gg

8619 Cavendish  
 Road, Route 6

**GPS Coordinates:**  
 46 29' 15.91394" N 63 22' 55.39185" W



Province House  
National Historic Site

# A BRAND NEW WAY TO EXPLORE



While Province House National Historic Site is closed for conservation work, experience the birth of the nation story in innovative ways through *The Story of Confederation*, presented by Confederation Centre of the Arts, with support from Parks Canada. Offered in Confederation Centre of the Arts' Upper Foyer and on the historic ground surrounding Province House, *The Story of Confederation* features a variety of captivating heritage experiences that are available for all to enjoy.

## Includes:

- A stunning replica of the historical Confederation Chamber
- Parks Canada's 20-minute film 'Building of Destiny' about the Charlottetown Conference which was held at Province House
- Guided interpretation of the exhibit, which includes a few original artifacts from the Confederation Chamber
- Historic vignettes from the Confederation Players
- The official Parks Canada Province House App
- Interpretive panels
- The Parks Canada Green Screen (weather permitting, summer only)
- *The Story of Confederation* Kiosk

For more information, visit us online at:  
[www.confederationcentre.com/chamber](http://www.confederationcentre.com/chamber)

