



Mingan Archipelago
National Park Reserve

Visitor Guide 2019



Parks
Canada

Parcs
Canada

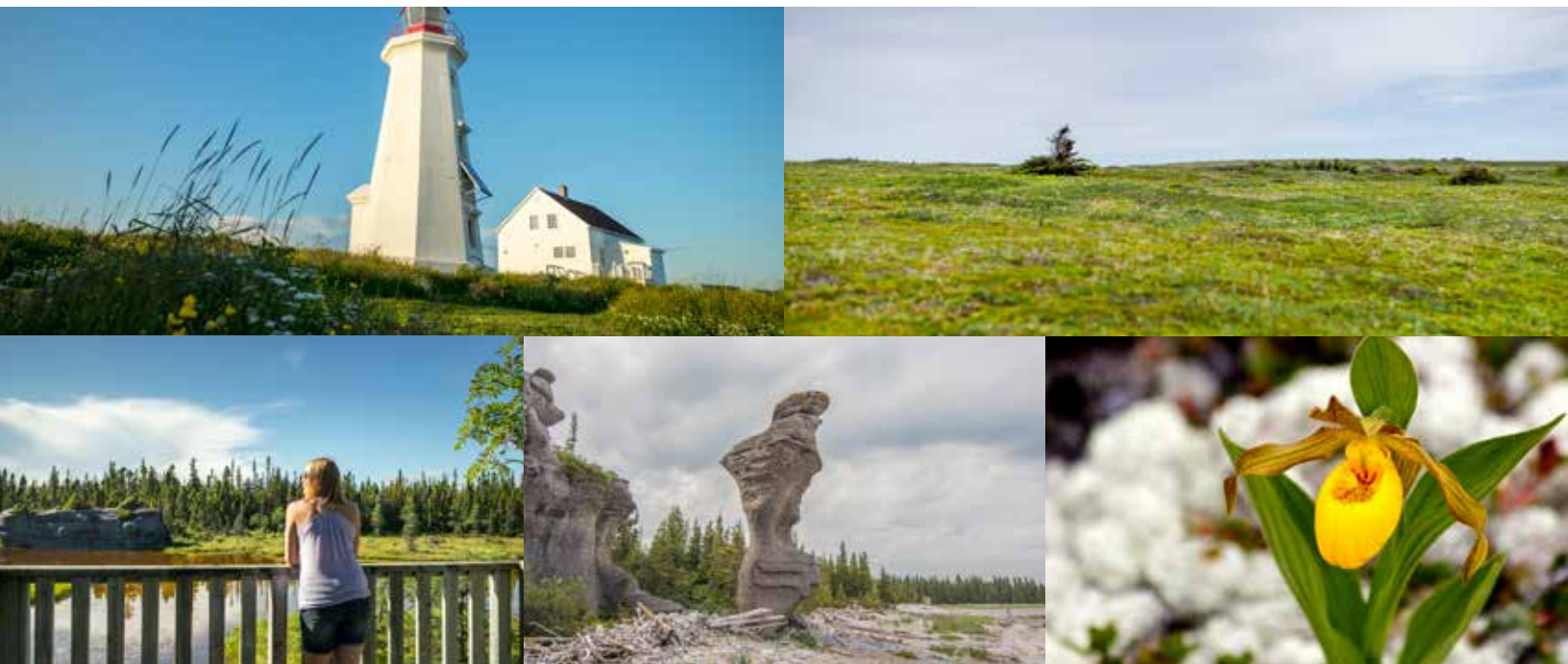
Canada

2019 Activities

INTERPRETIVE ACTIVITIES

DATES	LOCATION	THEMES	MEETING POINT
Daily From June 10 to September 6	Île aux Perroquets	<p>Une île, un phare, des oiseaux: Find out more about the history of the island's lighthouse keepers and the seabirds that kept them company.</p> <p>Guided walks: 8:35 am, 12:10 pm and 1:45 pm Duration: 1 hour</p>	Journey to the island from the Longue-Pointe-de-Mingan beach with local boat operators*
	Île Nue de Mingan	<p>Au-delà des apparences, une île riche: Immerse yourself in the human and natural history of this island.</p> <p>Guided walks:</p> <ul style="list-style-type: none"> › 10:15 am and 12:05 pm Duration: 1 hour › 2:20 pm Duration: 40 minutes 	
Daily From June 10 to September 6	Île Quarry	<p>Une mosaïque d'habitats: Enter a mosaic of habitats (seashore, forest, barrens, bogs and cliffs).</p> <p>Guided walks:</p> <ul style="list-style-type: none"> › From June 10 to July 14 9:30 am and 1:30 pm Duration: 1 hour 40 minutes › From July 15 to September 6 9:30 am and 1:30 pm Duration: 1 hour 40 minutes 9:35 am Duration: 2 hours › From September 7 to 27 Occasionally at 1:30 pm Duration: 1 hour 40 minutes 	Journey to the island from the Havre-Saint-Pierre marina with local boat operators*
	Île Niapiskau	<p>La formation des monolithes: Discover the origin of these ancient monuments.</p> <p>Guided walks: 9:50 am, 12:35 pm and 1:45 pm Duration: 1 hour</p>	
Daily From June 24 to August 18	Île du Fantôme	<p>Une beauté rare dans un milieu hostile: Walk along a path that follows the sea, you will discover an impressive flora and an abundant life.</p> <p>Guided walk: 3:20 pm Duration: 45 minutes</p>	

* See « Boat operators » section





EQUIPMENT AND FACILITIES

Legend of pictograms

	Emergency shelter		Picnic area		Wharf		Lighthouse		Private island
	Picnic shelter		Look-out		Maritime transportation departure		Marked hiking trail		Area closed when seabirds are nesting
	Accessible to mobility-impaired persons		Wilderness Campground		Accommodation		oTENTik		Hiking on Île Nue de Mingan is permitted only along the seashore
	Accessible to mobility-impaired persons with assistance		Group campground		Marina		Red chairs		
	Interpretation activities		Visitor reception and interpretation centre		Pleasure craft anchorage area		Park boundaries		Sectors closed to visitors are subject to change.



RED CHAIRS

Adirondack-style red chairs were placed at a few special locations on the islands and on the mainland in order to allow you to take the time to get closer to nature. Enjoy these exceptional views!



PARKS CANADA SHOP

Memories await! You would like to bring back some souvenirs of your stay at the Mingan Archipelago? Visit one of our shops, located in our Visitor Centres.

EXHIBITS

LOCATION	TITLES
Havre-Saint-Pierre Reception and Interpretation Centre (Portail Pélagie-Cormier)	Life stories from the Mingan Islands
Longue-Pointe-de-Mingan Reception and Interpretation Centre	Islands in the sea
Île aux Perroquets	Life on Perroquets



Life stories from the Mingan Islands



Islands in the sea



Life on Perroquets



CAMPING AND ACCOMMODATION

For the full island experience, why not spend the night on one of the islands of the archipelago.

There are options to suit every taste: camping, oTENTik tents or 4 stars accommodation.

ISLANDS	CAMPGROUNDS	NUMBER OF SITES
Île à la Chasse	Havre à Landry	6
Île du Havre	Havre au Sauvage	4
	Anse des Noyés	2
Île Niapiskau	Anse du Noroît	6
Île Quarry	Baie de Quarry Est	6 oTENTik tents
	Baie de Quarry Ouest	8
Grande Île	Havre à Petit-Henri	4
	Barchois à Montpetit	4
Île Nue de Mingan	Île Nue de Mingan	2

- › Opening season : Mid-June to Mid-September.
- › Camping permit mandatory.
- › Please note that you may have some distance to walk from the wharf to get to the campgrounds. Contact our visitor centres for more information.
- › There are outhouses and wood shelter near the campsites. Firewood supplied.
- › There are no restaurants or water sources on the islands.

WILD CAMPGROUND

The Mingan Archipelago National Park Reserve offers 36 campsites on six different islands. These wild camping sites allow you to experience a peaceful stay and to enjoy a journey of discovery. Campsites are equipped with a tent platform, a picnic table and a cooking fireplace.

OTENTIK TENT

Enjoy a furnished, heated and lit accommodation, a cross between a tent and a rustic cabin. Built on a raised floor and attached to a small patio, the oTENTik tent is also equipped with a barbecue with a burner. Propane is included. Each unit can accommodate up to 6 people.

Contact our Reception and Interpretation centres to learn more about oTENTik kit rental, to make your stay easier.

GROUP CAMPING

On Île du Havre, in Anse des Noyés, there are two campsites specially designed for school or organized groups. Each site can accommodate 12 to 25 people and is equipped with picnic tables, cooking fireplace and three tent platforms.





BEFORE YOU LEAVE

- › Reserve your trip with a boat operator recognized by Parks Canada (additional fees apply).
- › Get your camping permit (mandatory).
- › Visit our Reception and Interpretation Centre located in Havre-Saint-Pierre or Longue-Pointe-de-Mingan at least one hour prior to departure.
- › Arrive at the dock or beach at least 30 minutes prior to your departure time.
- › Make sure you know when and where the boat will pick you up the day you come back on the main land.

TARIFICATION*

- › **Camping site:** \$15.70 / night
- › **Group camping:** \$4.90 / person / night (minimum 12 persons)
Free for children under 6
- › **oTENTik tent:** \$120.00 / night
- › **oTENTik kit:** \$15.00 / night
- › **Fire permit:** \$8.80 / permit / night (mandatory)
- › **Entrance fees to the park:** See the fee grid at the back of this document

** Those fees are subject to change.*

CAMPING RESERVATION POLICY

- › **Making a reservation is advised** Online: www.reservation.pc.gc.ca
By phone: 1-877-737-3783
- › **Reservation, modification or cancellation fees**
Online: \$ 11.00 | By phone: \$ 13.50 This fee is non-refundable.
This fee is charged for each site per stay (a series of consecutive nights).
- › If campers do not return at the expected time, whether it is voluntary or not, applicable fees for site rental and daily admission will be charged upon their arrival, according to the length of their extended stay. Authorization required. Other fees may apply.
- › In case of cancellation, fees will be charged.

FOR AN OPTIMAL EXPERIENCE, DON'T FORGET TO BRING:

- › Food and drinking water for at least two extra days (2L./day/person).
- › A good sleeping bag, warm waterproof clothes and hiking boots (recommended).
- › A small axe and some matches.
- › An adequate communication device and a first aid kit.

4 STARS ACCOMODATION

Treat yourself to an eco-friendly overnight stay at Auberge de l'île aux Perroquets. Tuck in for the night in one of the light station's two houses.

Information or reservation:

Corporation de l'île aux Perroquets

Phone: 418-949-0005 or 1-855-717-7657

Email: info@ileauxperroquets.ca

Website: www.ileauxperroquets.ca




CORPORATION DE
l'île aux Perroquets



HIKING

In total, 80 km of trails spread over 9 different islands will make you discover the seaside life, the heart of the islands, the forest, the barrens and the peat bogs. Step by step, on the trails or along the beaches, soak up the moment and discover intriguing natural sculptures, while admiring this unusual setting!

Leaflets for self-guided tours as well as **tide tables** are available at our reception centres and from boat operators.

Shoreline hike or name of the trail	Island	Length / Approximative duration	Type	Level
Shoreline hike	Grosse île au Marteau*	4.1 km / 1 hour 30 minutes	loop	intermediate
La Lumière Trail	Petite île au Marteau	1.1 km / 30 minutes	linear	easy 
Shoreline hike	Île du Havre	17.2 km / 8 hours	loop	intermediate
Campanules Trail	Île du Fantôme	0.7 km / 25 minutes	linear	easy
Poète Jomphe Trail	Île Niapiskau	0.3 km / 15 minutes	loop	easy
Samuel Trail	Île Niapiskau	4.4 km / 2 hours	linear	intermediate
Les Falaises Trail	Île Quarry	1.2 km / 45 minutes	loop	easy
Le Petit Percé hike	Île Quarry	3.8 km / 2 hours	loop	intermediate
Les Cyripèdes hike	Île Quarry	10.8 km / 5 hours	loop	intermediate
Anse des Érosions Trail	Île Quarry	0.6 km / 15 minutes	linear	easy
Shoreline hike	La Grande Île**	27.2 km / 12 hours	loop	intermediate
Shoreline hike	Île Nue de Mingan***	9.0 km / 4 hours	loop	easy
Hike on path	Île aux Perroquets***	0.3 km / 10 minutes	linear	easy

* Only as of July 1st and book in advance with boat operators as the number of authorized hikers is limited.

** If you are using the boat operators recognized by Parks Canada, the hike on this island will only be possible if you spend the night.

*** Book in advance with boat operators as the number of authorized hikers is limited.

FOR YOUR SAFETY

In the Mingan Archipelago, hiking along the shoreline is a great way to explore, but this activity also has risks:



Falling rocks are a hazard near the cliffs. When possible, keep a safe distance, avoid walking beneath overhanging rocks and do not stop at the base of cliffs. Hike around low tide to stay away from the cliffs. Even with these precautions, be aware that falling rocks may sometimes be unavoidable and dangerous.



Please proceed with caution. Some areas along the shoreline may present difficult walking conditions and may cause you to fall. At low tide, water and seaweed on the rocks create slippery conditions. Hiking along the shoreline can be difficult at high tide: in some places, water may block the trail.



Climbing the monoliths is dangerous and prohibited.



Boat operators



The Mingan Archipelago National Park Reserve is only accessible by boat.

The boat operators mentioned in this brochure provide a variety of transportation services to the islands. Through a legal agreement with Parks Canada, these operators must respect the itineraries and schedules as well as ensure the quality of services.

It is strongly recommended that you contact these service providers for more information or to make reservations. A threshold number of passengers has to be reached for the trips to take place.

Note: It is prohibited to access the park with boat operators which are not holder of a license for commercial exploitation issued by Parks Canada.

NOTICE

Some contractors offer activities outside the park. These activities, including navigation on the sea around the park, are the sole responsibility of the contractors concerned.

Parks Canada is not responsible for accidents or incidents which occur during activities outside the park limits.

It is recommended to contact the boat operators to learn more about the maritime conditions.

BE INFORMED!

Before you practice your nautical activity in the archipelago, make sure you have all the equipment and information you need. This will contribute to your safety and will guarantee you a good experience.

- › Make sure you have an adequate communication device. Cellular coverage is limited in the park.
- › Visit the ogsl.ca website to view the atlas of ocean currents in the Mingan islands.
- › Ask about what mandatory equipment to bring during your sea kayak expedition.
- › Get the tide tables, topographic maps and nautical charts from our Reception and Interpretation Centres.
- › Make sure you know the other specificities related to navigating in the archipelago.



Excursions

DEPARTURES FROM HAVRE-SAINT-PIERRE

EXCURSIONS

Services Maritimes Boréale

Richard Family, owner
1010 promenade des Anciens
Havre-Saint-Pierre
Phone: 418-538-2865 or 1-866-538-2865 (toll free)
www.smboreale.com

Boats:

Marsouin III (12 passengers)
Capitaine Yockell (36 passengers)
Le Perroquet de mer and Le Calculot (47 passengers each)

Sea excursion with stopovers on île Quarry and île Niapiskau

From June 3 to September 27 - Capitaine Yockell
Departure: 1:00 pm | Duration: 3 hours 40 minutes

From July 15 to September 6
Le Perroquet de mer or Le Calculot
Departure: 8:45 am | Duration: 5 hours 30 minutes

Sea excursion with stopovers on île du Fantôme and île Niapiskau

From June 24 to August 18
Le Perroquet de mer or Le Calculot
Departure: 1:00 pm | Duration: 3 hours 30 minutes

Sea excursions to île à Calculot des Betchouanes with stopover on Petite île au Marteau

From June 24 to August 11 - Marsouin III
Departure: 8:00 am | Duration: 4 hours

Taxi boat for campers and/or hikers

Destination: Grande Île (9:00 am only), île Niapiskau and île Quarry

From June 3 to June 16 - Capitaine Yockell
Departure: 1:00 pm

From June 17 to July 21 and from August 19 to September 6
Capitaine Yockell
Departures: 9:00 am and 1:00 pm

From July 22 to August 18 - Capitaine Yockell
Departures: 9:00 am and 2:25 pm

Other destinations : île à la Chasse, île du Havre, Grosse Île au Marteau, Petite île au Marteau and île du Fantôme
Departures: Flexible hours

TAILOR-MADE EXCURSIONS

Croisières du Capitaine Richard

Mr Louis Richard, owner
Havre-Saint-Pierre marina
Havre-Saint-Pierre
Phone: 418-538-3375 or 418-566-9976

Boat:

La Mariner V (12 passengers)

Boat rental with crew for a tailor-made excursion

From June 15 to September 30
Departure and duration flexible



Excursions

DEPARTURES FROM LONGUE-POINTE-DE-MINGAN

Excursions du Phare

Vibert Family, owner
126 de la Mer St.
Longue-Pointe-de-Mingan
Phone: 418-949-2302 or 1-877-949-2302 (toll free)
www.minganie.info

Boats :

Le Phare I and Le Phare II (12 passengers each)

Sea excursions with stopovers on île aux Perroquets and île Nue de Mingan

Departures: 8:00 am, 11:45 am and 3:30 pm
Duration: 3 hours 30 minutes

Sea excursions with stopovers on Grande Île, île Nue de Mingan and île aux Perroquets

Departure: 8:00 am | Duration: 5 hours 45 minutes

Taxi boat for campers and/or hikers

Destination: île aux Perroquets (hikers only), île Nue de Mingan, occasionally Grande Île and île Quarry

Departures: Flexible hours



Entreprises touristiques Loiselle

Loiselle Family, owner
109 and 207 de la Mer St.
Longue-Pointe-de-Mingan
Phone: 418-949-2307 or 1-866-949-2307 (toll free)
www.tourisme-loiselle.com

Boats :

Le Macareux and Le Perroquet (12 passengers each)

Sea excursion with stopovers on île aux Perroquets and île Nue de Mingan

Departures: 8:00 am, 11:45 am and 3:30 pm
Duration: 3 hours 30 minutes

Taxi boat for campers and/or hikers

Destination: île aux Perroquets (hikers only), île Nue de Mingan, Grande Île and île Quarry

Departures: Flexible hours



DEPARTURES FROM RIVIÈRE-SAINT-JEAN

Anticosti, Minganie, Côte-Nord, Qc

Mr Renaud Parisée, owner
200 de la Croix St.
Rivière-Saint-Jean

Phone: 418-538-0911 or 418-949-2095
www.croisieresanticosti.com

Boat:

La Macreuse (12 passengers)

Anticosti Island packages

1 to 4-day packages including an hour long stopover in the Mingan Archipelago

Departures: Flexible hours

Sea excursion with stopovers on Petite île au Marteau and île Quarry or Grande Île

From the beginning of June to the end of September

Departure: 9:00 am | Duration: 6 hours



Nautical Activities

SEA KAYAK

Noryak Aventures

Mr Mathieu Bourdon, owner
Km 1201 (Auberge de la Minganie)
Havre-Saint-Pierre
Phone: 418-949-2707
www.noryak.ca

* Guided hikes, gourmet meals and interpretation

Everyday from June 15 to September 15
Upon request as of May and until late October

Half a day sea excursion - Romaine river mouth

Departures: 9:00 am and 1:00 pm | Duration: 3 hours

Whole day excursion - Romaine river bay

Departure: 9:00 am | Duration : 6 hours

Whole day excursion - Île aux Perroquets

Departures: flexible hours | Duration: 6 to 8 hours

Base camp excursion - Grande île

Includes: Training, equipment, guiding service, camping equipment and meals.

Departures: July 29, August 5 and 19
Duration: 4 days and 3 nights

Chinook Aventure (departure from Montreal)

Mr Pierre Bourdeau, general manager
4035 St-Ambroise St. local 219
Montreal (Quebec) H4C 2E1
Phone: 514-271-6046 or 1-888-599-0999 (toll-free)
www.chinookaventure.com

Quatre natures (departure from Quebec City)

Mr Yohann Moucheboeuf, Founding-president
825 de Claire-Fontaine St. #2
Quebec (Quebec) G1R 3A6
Phone: 418-271-7234
www.quatrenatures.com

7 days travel packages (group of 12 persons maximum)

Departure: August 24

5-day sea kayaking excursion in the Mingan Archipelago, from Montreal or Quebec City.



STAND UP PADDLEBOARD

Les Vagues - Loisirs marins

Ms Jane-Anne Cormier and Mr Johney Cormier, owners
1769, de l'Anse St.
Havre-Saint-Pierre
Phone: 418-553-3849
www.lesvagues.ca

** Equipement rental available

Excursion on Grosse Île au Marteau and possibilities on Petite île au Marteau, île du Havre and île Quarry

Departure : flexible hours | Duration : approximately 3 hours
Transport with Services Maritimes Boréale.

Excursion SUP Marteau

Every Saturday and Sunday (possibility to add departures on week days for groups of 2 people or more)

Departures: 6:00 am, depending on the weather conditions
Duration: approximately 4 hours
Transport with Services Maritimes Boréale

L'Exode

Includes: equipment, workshops, activities, healthy meals and snacks, transport and two nights in an oTENTik tent or in camping

Duration: 3 days
Departures: July 5 | Petite île au Marteau (camping)
September 13 | Île Quarry (oTENTik)



SCUBA-DIVING

Services Maritimes Boréale

Richard Family, owner
1010 promenade des Anciens
Havre-Saint-Pierre
Phone: 418-538-2865 or 1-866-538-2865 (toll free)
www.smboreale.com

Taxi boat for scuba divers

From June 3 to September 27 - Marsouin III

Departures: flexible hours, depending on the availability of the boat

* You must have your own diving equipment. Air station available for filling bottles.

A CONSERVATION TEAM DEDICATED TO THE PROTECTION OF NATURAL AND CULTURAL RESOURCES

SEABIRDS AS INDICATORS OF ECOSYSTEM HEALTH

The islands of the Mingan Archipelago provide crucial habitat for the nesting of tens of thousands of seabirds, including the Common and Arctic terns, commonly called “sea swallows” or “istorlets”. Tern populations in the park reserve are among the largest ones in Quebec. It is not surprising that these species are used as an indicator of the health status of the islands. Since the creation of the park reserve in 1984, several inventories of terns have been performed. In 2019, a census of every nest and egg of these sea swallows will be carried out across the islands of the archipelago. By comparing our observations with historical data, we will then be able to estimate the health of these two species as well as the ecological integrity of the islands.



TO THE RESCUE OF THE MINGAN THISTLE

Emblematic endangered species of the Mingan Archipelago National Park Reserve, we find the Mingan thistle nowhere else in Québec! As a result of the drastic decline of more than 70% of the population between 2011 and 2017, a restoration program has been implemented in order to save the species. Efforts are starting to pay off! In fact, seeds sown in 2017 allowed the Mingan Thistle population to grow from 444 plants to 1,281 within a year. The work of our collaborators has also progressed: the Montreal Biodome is growing seedlings in order to produce seeds and the in vitro production carried out by the Gosling Research Institute for Plant Preservation (GRIPP) is doing well. Efforts will continue in 2019: research in genetics, creation of a new colony, seeding, study of the effect of storms, etc.



A NATURAL ENVIRONMENT RICH IN CULTURAL RESOURCES

The natural resources of the islands of the Mingan Archipelago have always influenced human occupancy in the park reserve. Several artefacts or archaeological sites testify to these occupations, such as the Basque ovens (Île Nue de Mingan) that were used to melt blubber (whale fat), or the presence of many Aboriginal archaeological sites that testify to the activities of seal hunting (Île Nue de Mingan) or pruning workshops (Île du Havre and Île Saint-Charles). Recently, testimonies of the elders of the area, paired with the reports of Henry de Puyjalon and our historical photos of 1933, have identified the presence of a former canning factory from the early twentieth century. Also known as a lobster factory, this one was located in the eastern part of the park reserve.



THANK YOU FOR RESPECTING THIS FRAGILE AREA:

- › Use only established trails or keep to areas with no vegetation when walking along the coastline.
- › Respect the Code of Ethics for Seabird Observation and Navigation in the Mingan Archipelago.
- › Make sure to read and obey park regulations.
- › Bring back your garbage after your stay in the park.
- › Avoid feeding the animals.
- › Leave your drone at home.



PRESENCE OF SURVEILLANCE CAMERAS

Surveillance cameras are used in this national park for wildlife conservation purposes. Are you concerned about protecting your privacy? We are too. That's why we delete visitor images taken by our cameras. However, if the images show illegal activities that may have serious impacts on wildlife or that jeopardize visitor safety, they may be used for enforcement purposes.



Come meet our visitor services attendants. They will be happy to tell you about our activities and services. Let them make your visit a memorable one!

BUSINESS HOURS

Reception and Interpretation centres Parks Canada Shops		Reception centres	
Havre-Saint-Pierre 1010 promenade des Anciens Portail Pélagie-Cormier Phone: 418-538-3285 June 3 to 9: 12:00 pm to 4:00 pm June 10 to 23: 8:00 am to 5:00 pm June 24 to August 23: 7:30 am to 7:30 pm August 24 to Sept. 27: 8:30 am to 5:30 pm		Aguanish Parks Canada Shop 250 Jacques-Cartier Road Phone: 418-533-2228 June 19 to Sept. 2: 8:30 am to 4:30 pm	
Longue-Pointe-de-Mingan 625 Centre St. Phone: 418-949-2126 June 10 to 16: 8:30 am to 12:00 pm and 1:00 pm to 5:00 pm June 17 to August 23: 8:30 am to 5:30 pm August 24 to Sept. 8: 8:30 am to 12:00 pm and 1:00 pm to 5:00 pm		Baie-Johan-Beetz 16 Tanguay St. Phone: 418-539-0243 June 21 to Sept. 2: 8:30 am to 4:30 pm	

Follow us on our social media



Visit our Website

parks canada.gc.ca/mingan

FEES

Entrance fees	Daily	Seasonal (before June 30)	Seasonal
Adult	\$5.80	\$14.70	\$29.40
Senior (65 and over)	\$4.90	\$12.20	\$24.50
Youth (17 and under)	Free	Free	Free
Family / Group (max. 7 persons)	\$11.75	\$36.80	\$58.90

- › Parks users must pay entrance fees to the islands.
- › For boat operator customers, these fees will be charged upon buying your ticket at the boat operator kiosk. For campers, these fees will be charged when you obtain your camping permit at the Reception and Interpretation Centres in Longue-Pointe-de-Mingan and Havre-Saint-Pierre.
- › GST and QST included.

Toll-free information services: 1-888-773-8888

Report violations: 1-888-862-1422

EMERGENCY: 1-888-762-1422