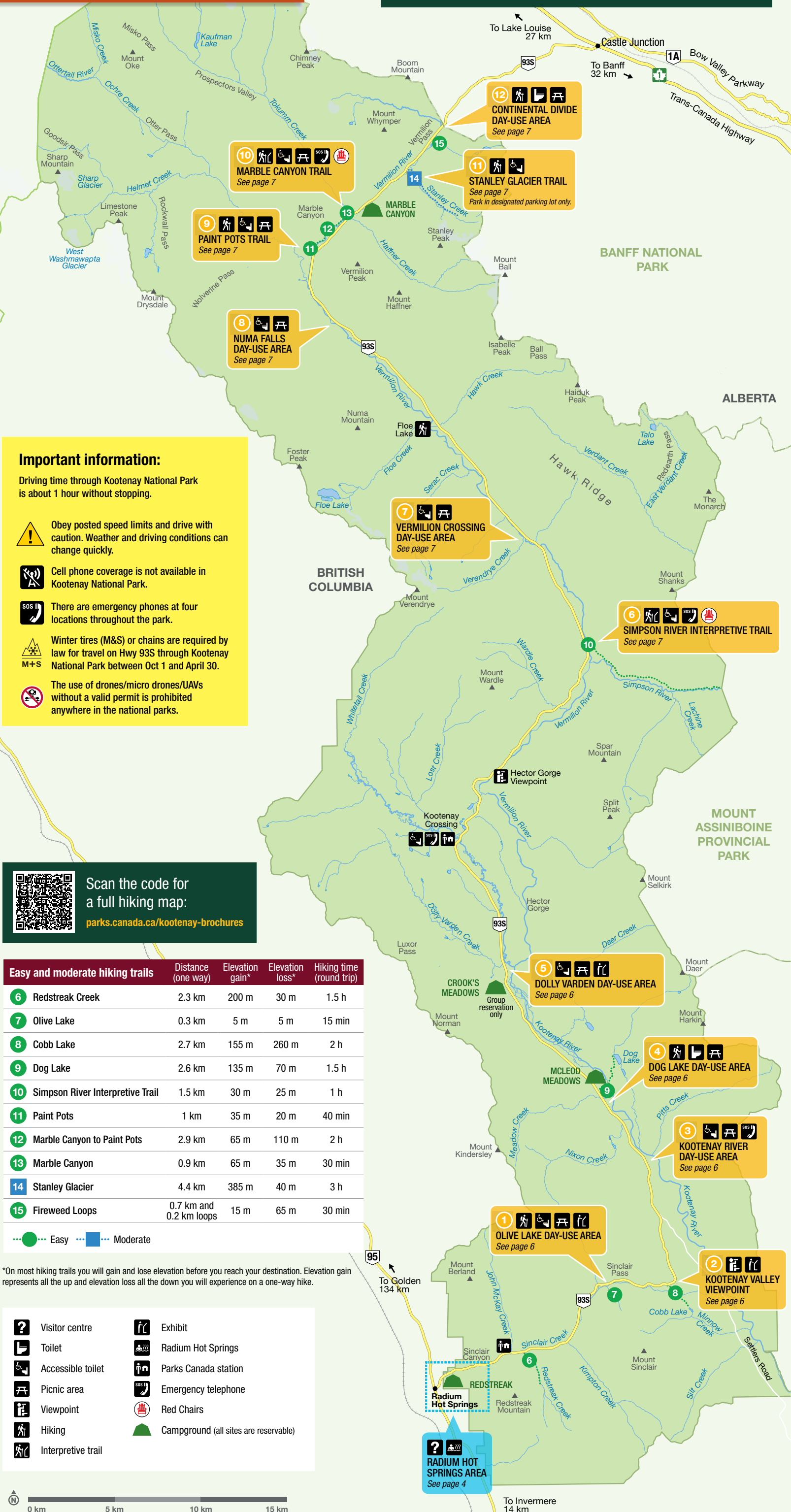
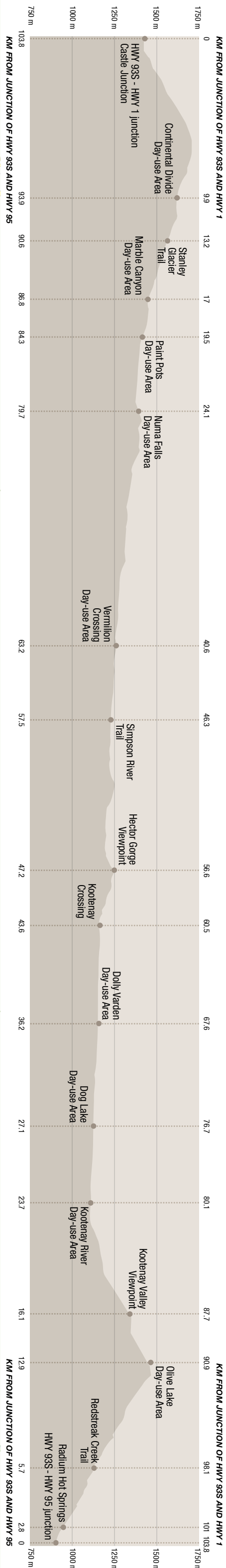


KOOTENAY NATIONAL PARK

TIP! Set your odometer to 0 in Radium Hot Springs or at Castle Junction and don't miss any of the highlights along Hwy 93S! Just follow the diagram on the right hand side.
NEW! Download the new Kootenay guided audio tour. Go to p. 10 to find out more.

ELEVATION PROFILE AND DISTANCES



Important information:

Driving time through Kootenay National Park is about 1 hour without stopping.

- Obey posted speed limits and drive with caution. Weather and driving conditions can change quickly.
- Cell phone coverage is not available in Kootenay National Park.
- There are emergency phones at four locations throughout the park.
- Winter tires (M&S) or chains are required by law for travel on Hwy 93S through Kootenay National Park between Oct 1 and April 30.
- The use of drones/micro drones/UAVs without a valid permit is prohibited anywhere in the national parks.



Scan the code for a full hiking map:
parks.canada.ca/kootenay-brochures

Easy and moderate hiking trails	Distance (one way)	Elevation gain*	Elevation loss*	Hiking time (round trip)
6 Redstreak Creek	2.3 km	200 m	30 m	1.5 h
7 Olive Lake	0.3 km	5 m	5 m	15 min
8 Cobb Lake	2.7 km	155 m	260 m	2 h
9 Dog Lake	2.6 km	135 m	70 m	1.5 h
10 Simpson River Interpretive Trail	1.5 km	30 m	25 m	1 h
11 Paint Pots	1 km	35 m	20 m	40 min
12 Marble Canyon to Paint Pots	2.9 km	65 m	110 m	2 h
13 Marble Canyon	0.9 km	65 m	35 m	30 min
14 Stanley Glacier	4.4 km	385 m	40 m	3 h
15 Fireweed Loops	0.7 km and 0.2 km loops	15 m	65 m	30 min

● Easy ● Moderate

*On most hiking trails you will gain and lose elevation before you reach your destination. Elevation gain represents all the up and elevation loss all the down you will experience on a one-way hike.

- Visitor centre
- Toilet
- Accessible toilet
- Picnic area
- Viewpoint
- Hiking
- Interpretive trail
- Exhibit
- Radium Hot Springs
- Parks Canada station
- Emergency telephone
- Red Chairs
- Campground (all sites are reservable)



RADIUM HOT SPRINGS AREA
 See page 4

KOOTENAY VALLEY VIEWPOINT
 See page 6

OLIVE LAKE DAY-USE AREA
 See page 6

KOOTENAY RIVER DAY-USE AREA
 See page 6

DOG LAKE DAY-USE AREA
 See page 6

DOLLY VARDEN DAY-USE AREA
 See page 6

VERMILION CROSSING DAY-USE AREA
 See page 7

NUMA FALLS DAY-USE AREA
 See page 7

PAINT POTS TRAIL
 See page 7

MARBLE CANYON TRAIL
 See page 7

STANLEY GLACIER TRAIL
 See page 7
 Park in designated parking lot only.

CONTINENTAL DIVIDE DAY-USE AREA
 See page 7