



Kejimikujik National Park and National Historic Site

Services and Facilities

- | | | | |
|--|---------------------|--|-----------------------|
| | Warden Office | | Canoe Rental |
| | Picnic Area | | Kayak Rental |
| | Picnic Shelter | | Paddleboard Rental |
| | Visitor Centre | | Bike Rental |
| | Wi-Fi | | Lookout |
| | Playground | | Parking |
| | Backcountry Camping | | Swimming |
| | Rustic Cabin | | Exhibit |
| | Yurt | | Sorting Station |
| | Washrooms | | No Dogs |
| | Barrier-free Access | | On-Leash Dogs Allowed |

- | | | | |
|--|---------------------|--|--------------|
| | Hiking Trail | | Portage |
| | Biking/Hiking Trail | | Paved Road |
| | Wilderness Trail | | Unpaved Road |

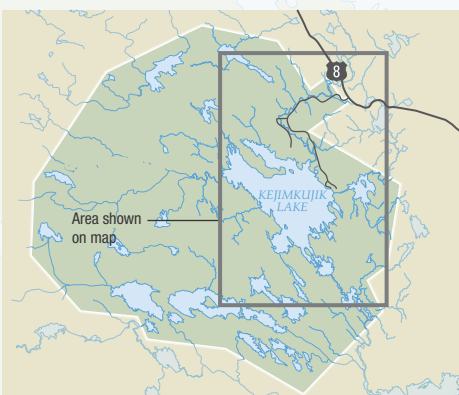
Hiking Trails 1 **Hiking/Biking Trails 2** **Wilderness Trails 17**
Trail descriptions on reverse.

Closed for construction
Jeremy's Bay Campground is closed in 2020 so new washrooms can be built and utilities refitted **safely and efficiently**. We look forward to welcoming you back to the campground in 2021.

Merrymakedge Inset



Kejimikujik Inset



Fishing



A **National Park Fishing Permit** is required to fish in Kejimikujik. Parks Canada fishing regulations differ from Provincial Regulations. Please read the "Fish Management and Protection" brochure, available at the Visitor Centre or visit parkscanada.ca/keji.

The following publications are available at the **Visitor Centre Front Desk**:

- Backcountry Guide (for purchase)
- Kejimikujik Seaside Day-Use Map
- Red Chairs Map



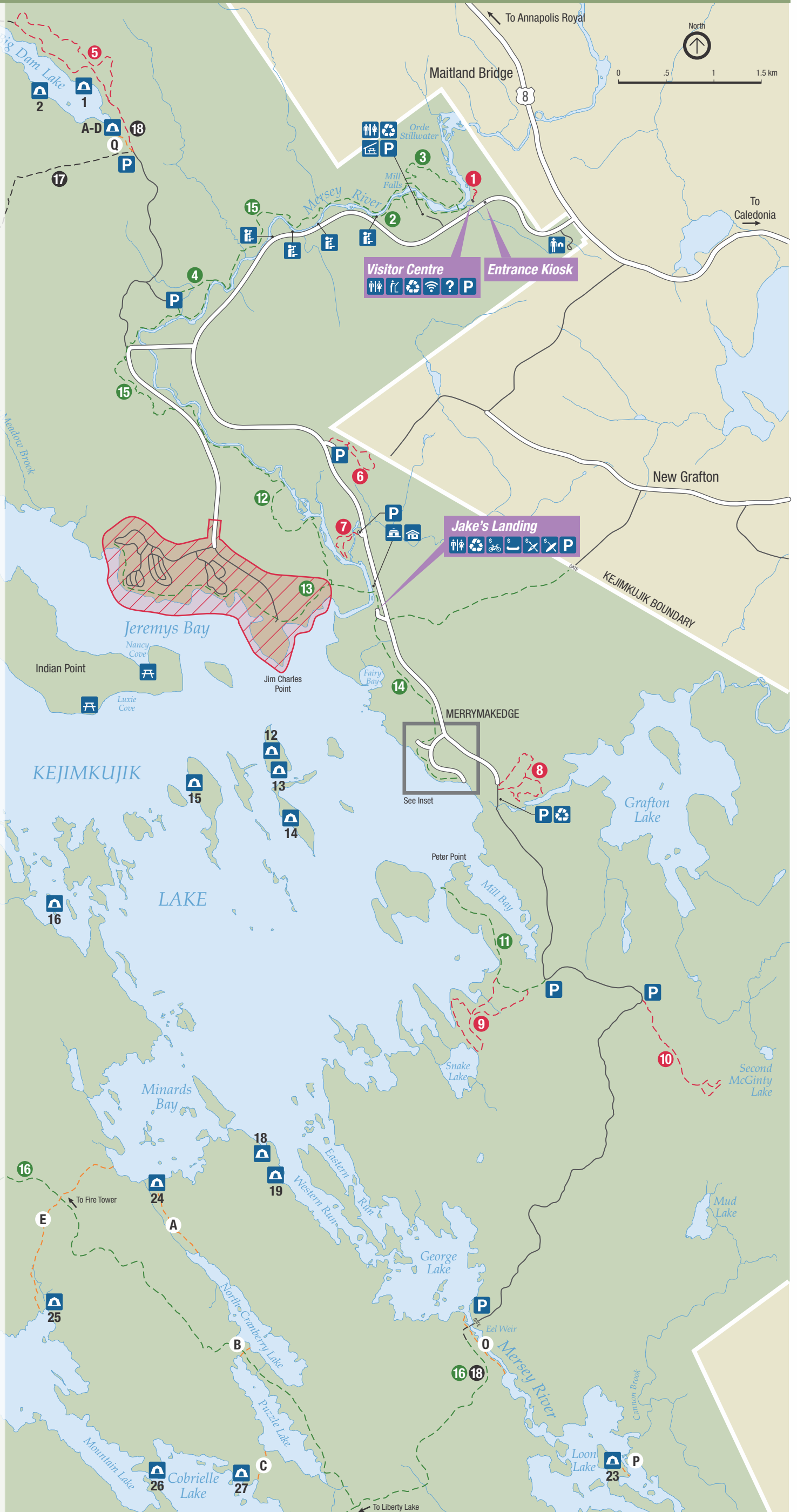
Safety – A Shared Responsibility

Did you know? Provincial Motor Vehicle legislation is applicable and enforced in Kejimikujik.

- It is unsafe and illegal to ride in the back of trucks.
- Speeding and failure to stop at the entrance kiosk poses a safety hazard and is against the law.

Ambassadors: 902-298-0668

Police, Fire, Ambulance: 911 (emergency only)



Parks Canada
Parcs Canada

Canada