



Jasper  
National Park

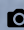
SUMMER 2020

# Visitor Guide



**If you see wildlife on the road while driving, *STAY IN YOUR VEHICLE.***

Également offert en français

 Rogier Gruys



Parks  
Canada

Parcs  
Canada

Canada



© Old Fort Point

## Welcome

Jasper is the largest national park in the Canadian Rockies. The park is over 11,000 square kilometres. We invite you to explore all five travel regions in Jasper National Park. Hike, mountain bike, paddle, or simply take in the scenery. The choice is yours.

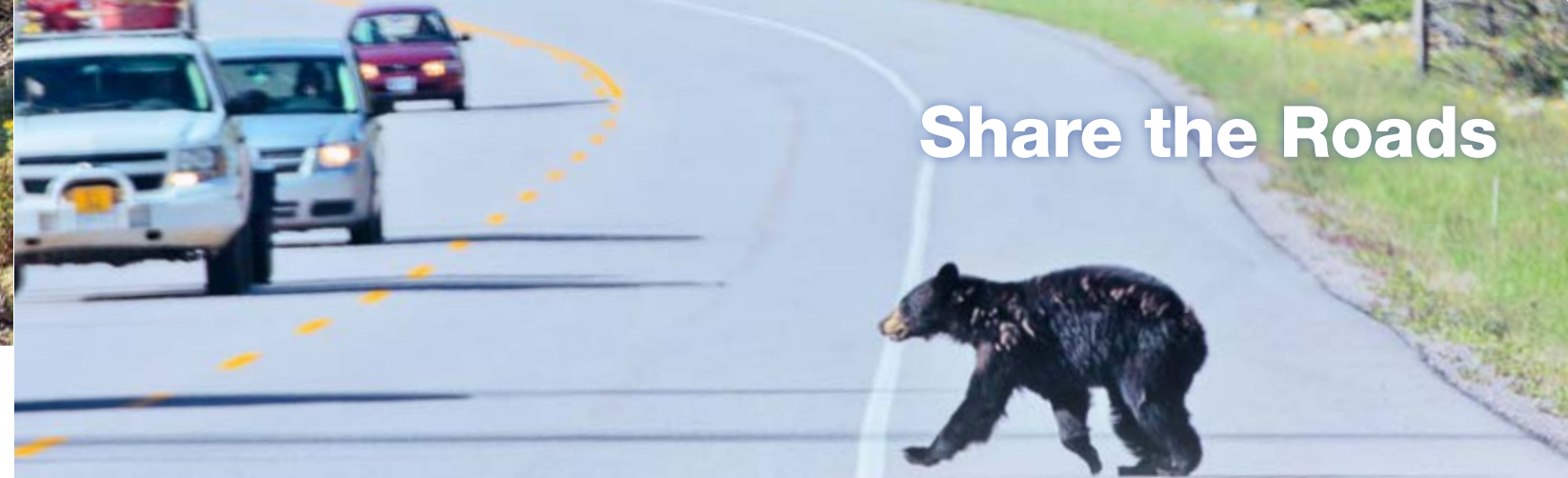
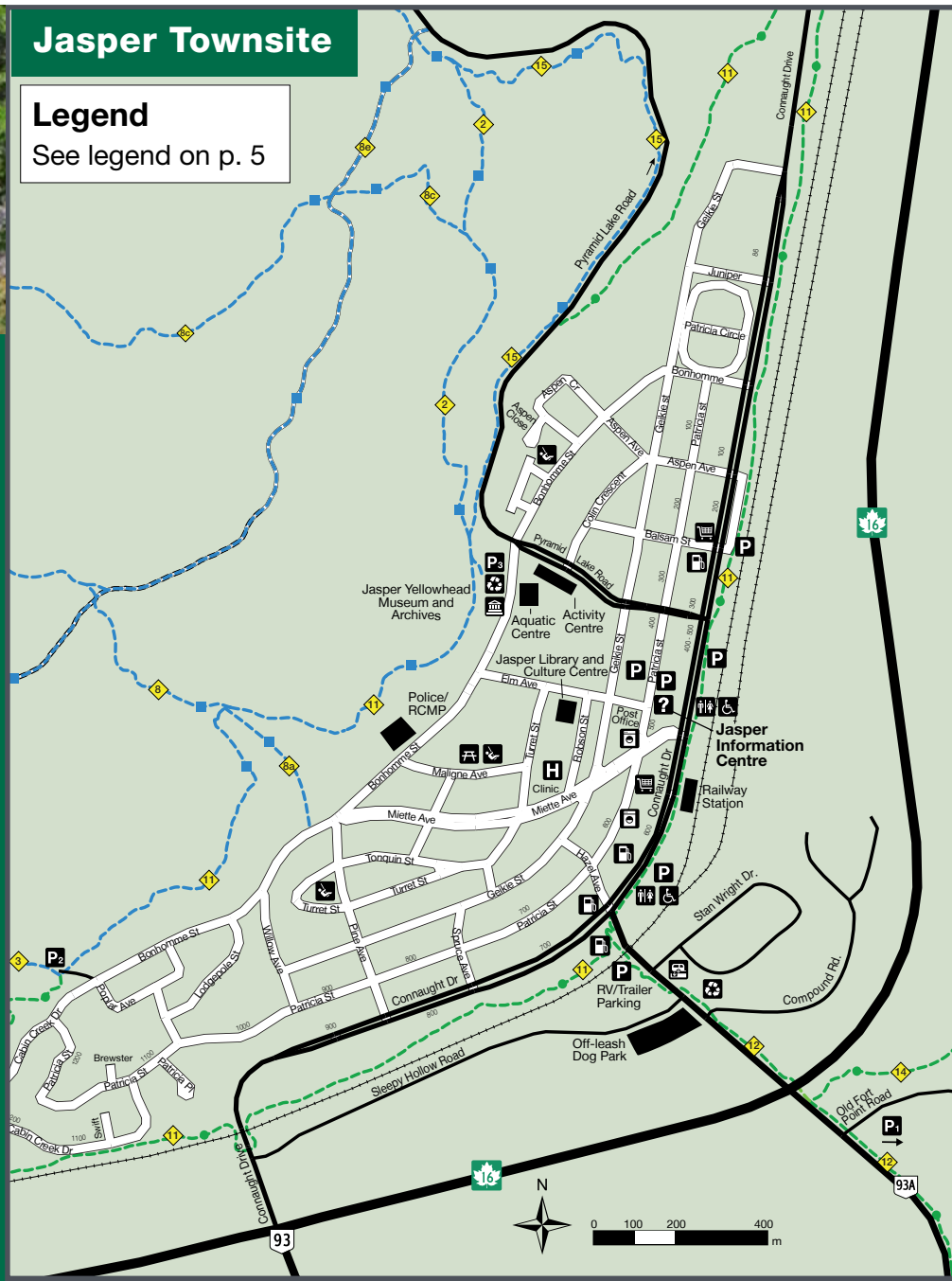
**Parks Canada wishes you a warm welcome. Enjoy your visit!**

We respectfully acknowledge that Jasper National Park is in Treaty Six and Eight territories as well as the traditional territories of the Beaver, Cree, Ojibway, Shuswap, Stoney and Métis Nations. We mention this to honor and be thankful for their contributions to building our park, province and nation.



## Contents

Share the Roads	3
Five Park Areas to Travel	4-5
Around Town	6
Maligne Valley	8
Jasper East and Miette Hot Springs	10
Mount Edith Cavell	12
Icefields Parkway	13
Icefields Parkway Driving Map	14-15
Wildlife Identification	16
Species at Risk	17
Water Sports and Invasive Species	18
Fort St. James National Historic Site	19
Human Food Kills Wildlife	20
Park Regulations	21
Campgrounds	22
Red Trees and Directory	23
Mountain Parks Map	24



## Share the Roads



### THERE ARE OVER 2.5 MILLION VISITORS ON JASPER ROADS EVERY YEAR.

Mountain roads and wild places are new experiences for many visitors. Safe driving is key to an enjoyable holiday.



You may see wildlife by the road, in campgrounds, at picnic areas, on trails and in town. Wild animals feed and travel near roads throughout the park. This does not mean the animals are tame. Help us protect these wild animals.

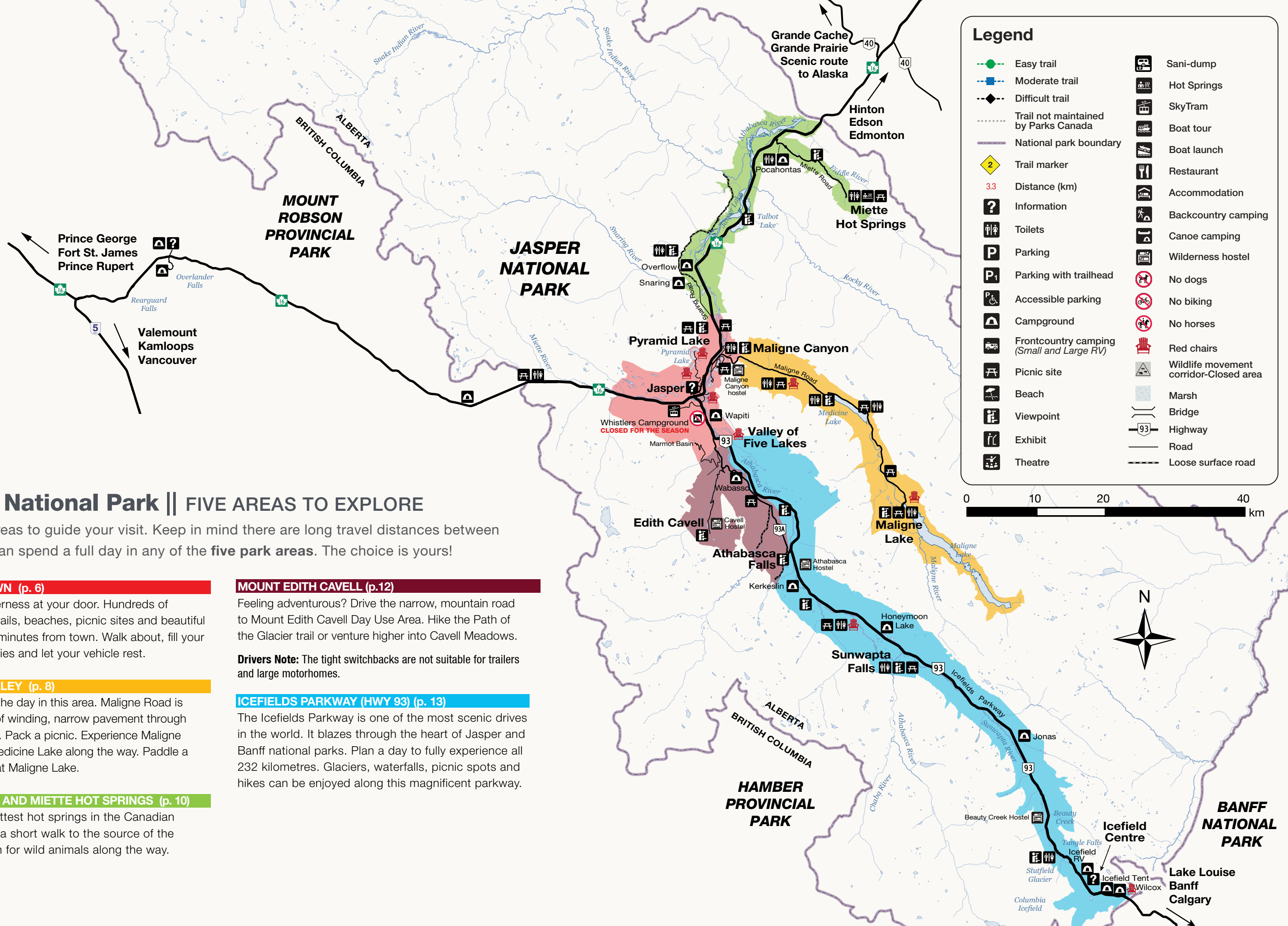
The number of unsafe wildlife encounters in Jasper National Park has more than doubled in the last ten years. The number of unsafe wildlife traffic jams has increased by 92% in the same decade. The incidents often result in injury, harm, or death for wild animals and humans. Be safe and keep wild animals safe.

## When you see wildlife while driving, STAY IN YOUR VEHICLE

- Slow down. Obey the speed limits.
- Use your hazard lights to alert others.
- Pull over only where it is safe to do so.
- Observe, take photographs, and move on.
- Do not stop in driving lanes. It is illegal.
- Do not feed wildlife. It is illegal.
- Move on immediately if a traffic jam develops.



**Remember, safety is your responsibility.**



## Jasper National Park || FIVE AREAS TO EXPLORE

Use these areas to guide your visit. Keep in mind there are long travel distances between areas. You can spend a full day in any of the **five park areas**. The choice is yours!

### AROUND TOWN (p. 6)

Enjoy the wilderness at your door. Hundreds of kilometres of trails, beaches, picnic sites and beautiful vistas are just minutes from town. Walk about, fill your day with activities and let your vehicle rest.

### MALIGNE VALLEY (p. 8)

Plan to spend the day in this area. Maligne Road is 44 kilometres of winding, narrow pavement through stunning vistas. Pack a picnic. Experience Maligne Canyon and Medicine Lake along the way. Paddle a canoe or hike at Maligne Lake.

### JASPER EAST AND MIETTE HOT SPRINGS (p. 10)

Soak in the hottest hot springs in the Canadian Rockies. Take a short walk to the source of the springs. Watch for wild animals along the way.

### MOUNT EDITH CAVELL (p.12)

Feeling adventurous? Drive the narrow, mountain road to Mount Edith Cavell Day Use Area. Hike the Path of the Glacier trail or venture higher into Cavell Meadows.

**Drivers Note:** The tight switchbacks are not suitable for trailers and large motorhomes.

### ICEFIELDS PARKWAY (HWY 93) (p. 13)

The Icefields Parkway is one of the most scenic drives in the world. It blazes through the heart of Jasper and Banff national parks. Plan a day to fully experience all 232 kilometres. Glaciers, waterfalls, picnic spots and hikes can be enjoyed along this magnificent parkway.

# Around Town



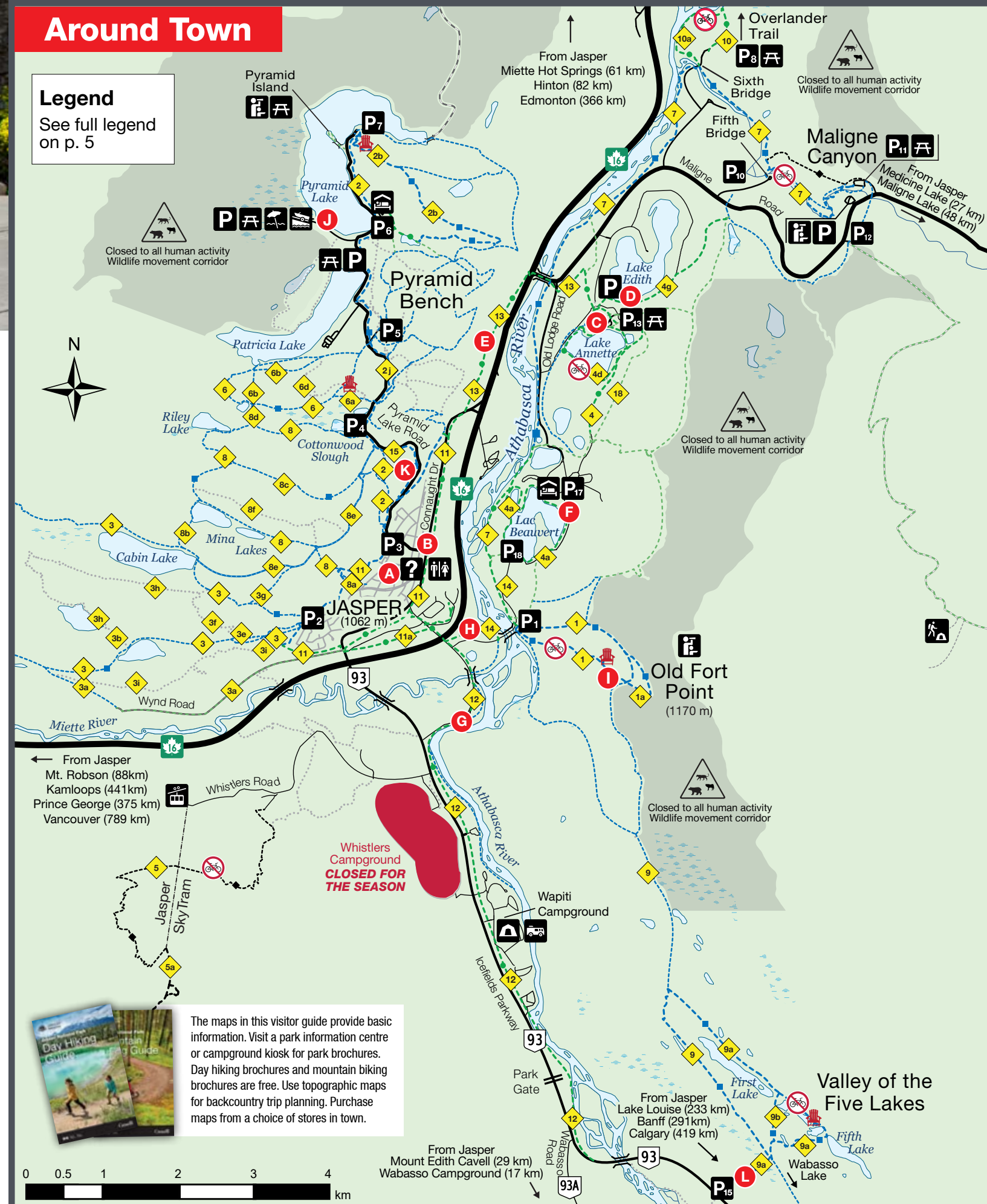
© Parka visiting Jasper

Highlights	Distance	Description	Primary Use
<b>A</b> Jasper Heritage Fire Hall	Downtown Patricia St.	Visit a park interpreter. Exhibits. Activities for all ages. Daily street theatre.	
<b>B</b> Jasper Discovery Trail	8.3 km loop	Interpretive trail around town with multiple access points. Parts of the trail are moderately difficult.	
<b>C</b> Lake Annette and Trail	7.6 km drive from Jasper 2.4 km loop	Jasper's largest beach. Family friendly. Playground, picnic sites, cook shelters, and change rooms. Paved waterfront trail. Stroller and wheelchair friendly.	
<b>D</b> Lake Edith	7.3 km drive from Jasper	Smaller beach near Lake Annette. Picnic sites. Views of Roche Bonhomme.	
<b>E</b> Bighorn Trail	9.2 km return	Easy trail from town to Lake Annette and Lake Edith.	
<b>F</b> Lac Beauvert Trail	3.5 km loop	This flat loop around Lac Beauvert begins at Jasper Park Lodge.	
<b>G</b> Wapiti Trail	4.6 km one way	Connects Wapiti Campground to Jasper Town. Follows Highway 93 and Athabasca River.	
<b>H</b> Red Squirrel Trail	4.8 km return	Trail from town to Old Fort Point and Jasper Park Lodge.	
<b>I</b> Old Fort Point Trail	3.8 km loop	Steep trail with excellent town and valley views.	
<b>J</b> Pyramid Lake	6.0 km drive from Jasper	Family friendly beach. Picnic sites at beach and Pyramid Island. Paddle a canoe. Stunning views all around.	
<b>K</b> Pyramid Trail	10.8 km return	Trail follows the road from town to Pyramid Lake. Forest path with road crossings. Steady uphill climb.	
<b>L</b> Valley of the Five Lakes Trail	4.6 km loop	Explore five colourful mountain lakes in one hike.	

Easy Moderate

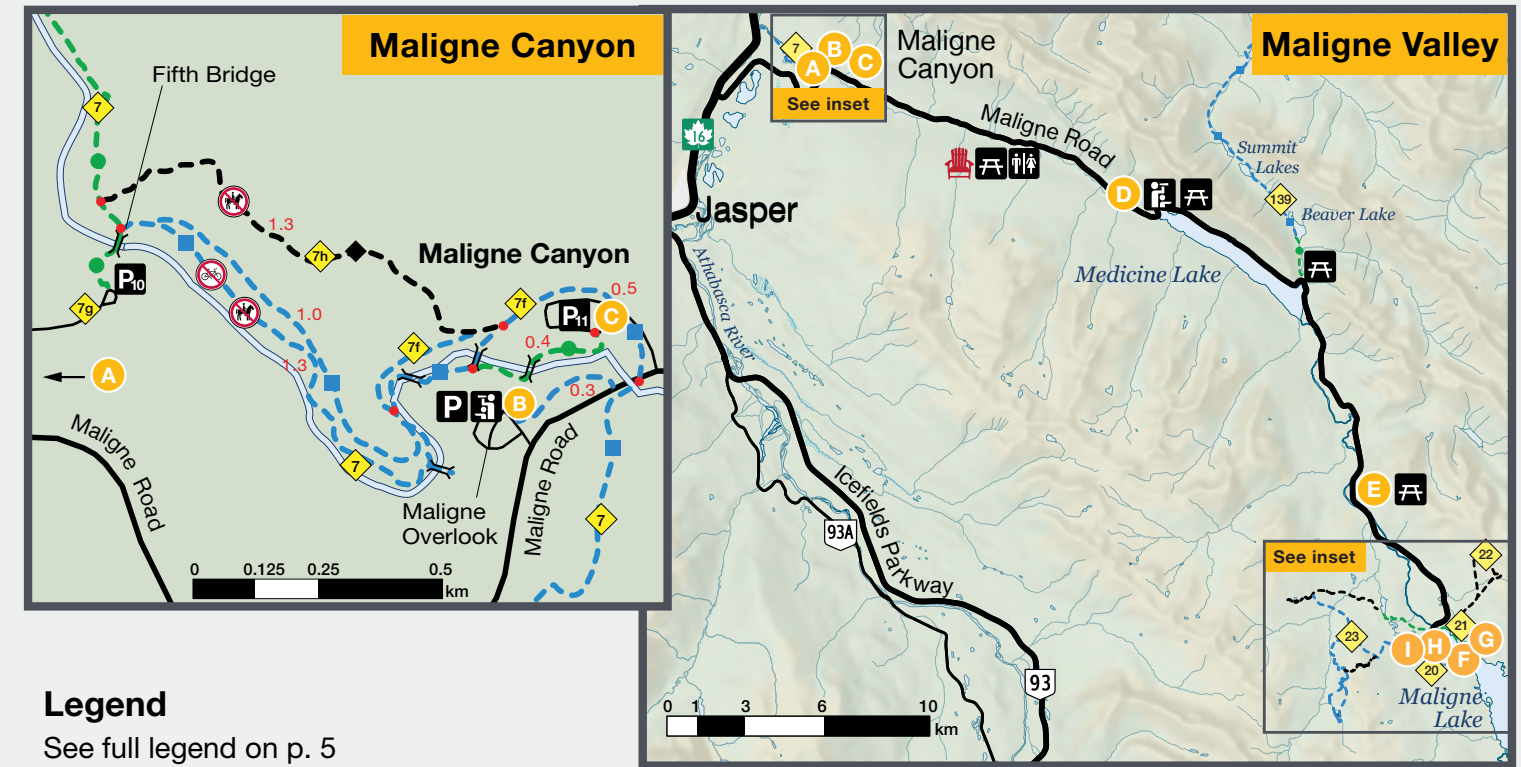
# Around Town

**Legend**  
See full legend on p. 5



The maps in this visitor guide provide basic information. Visit a park information centre or campground kiosk for park brochures. Day hiking brochures and mountain biking brochures are free. Use topographic maps for backcountry trip planning. Purchase maps from a choice of stores in town.

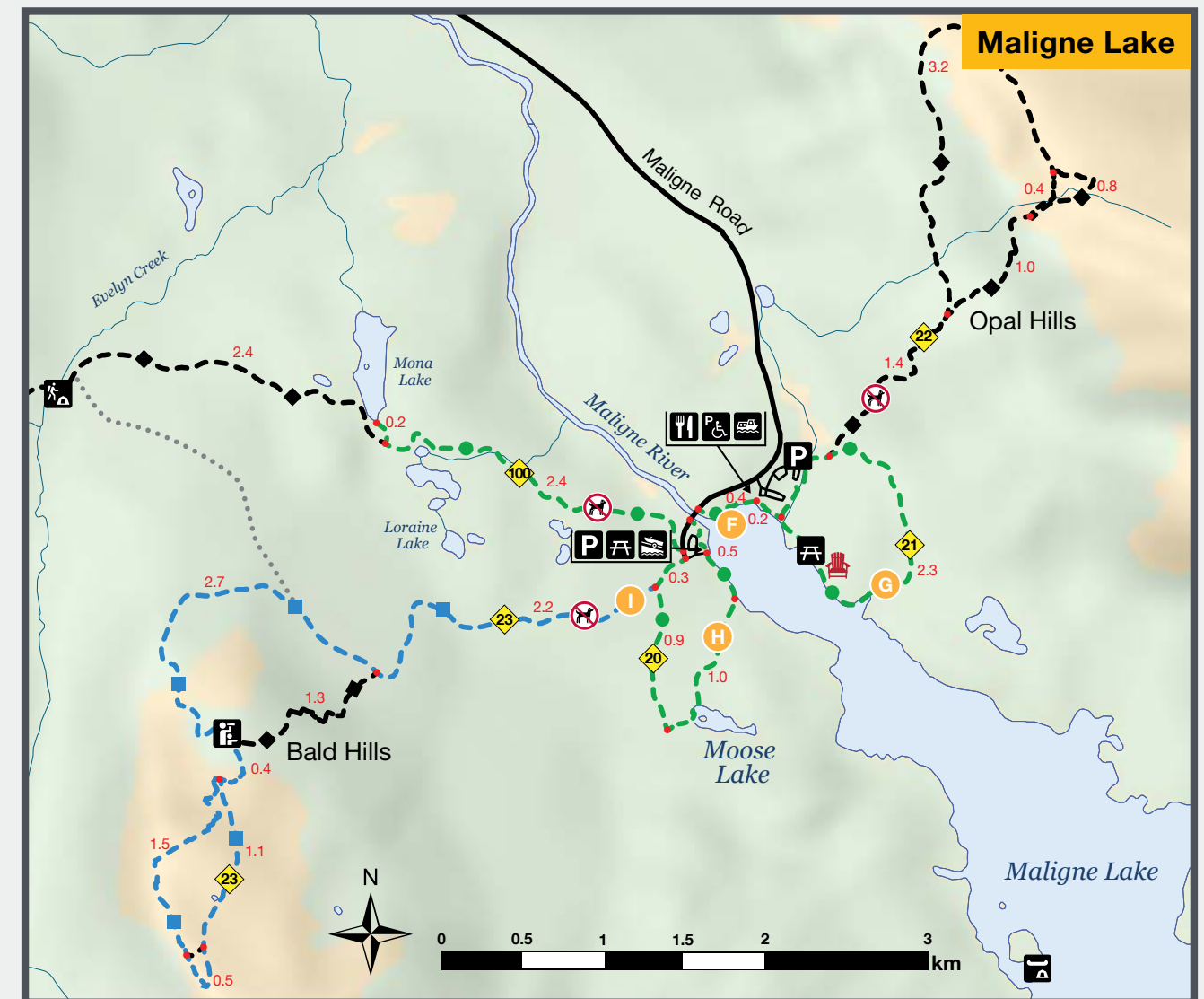
# Maligne Valley



**Legend**  
See full legend on p. 5

Highlights	Distance	Description	Primary Use
<b>A</b> Sixth Bridge Day Use	8.4 km drive from Jasper	Picnic along the rushing Maligne River. Sites have double tables for large groups.	
<b>B</b> Maligne Overlook	10.9 km drive from Jasper	Sweeping views of the Athabasca Valley and mountain peaks.	
<b>C</b> Maligne Canyon Day Use Area	11.2 km drive from Jasper	A must-see for geology lovers. Waterfalls, potholes, and fossils. Visit early morning or evening to avoid peak crowds. <b>P11</b>	
<b>C</b> Maligne Canyon Trail	4.4 km return	Explore this deep, dramatic gorge. Walk the interpretive trail between footbridge #1 and #4. Stay on the trail. Be safe. <b>P11</b>	
<b>D</b> Medicine Lake	27 km drive from Jasper	Superb example of karst geology. Striking changes in water levels. Nesting eagles.	
<b>E</b> Bruce's Picnic Site	42 km drive from Jasper	Wheelchair and stroller friendly site beside Maligne River. Fewer crowds than at the lake.	
<b>F</b> Maligne Lake	48 km drive from Jasper	Sublime sweeping views. The postcard photo! Take a boat cruise. Paddle a canoe. Stroll the lake shore. <b>P</b> Maligne Lake	
<b>G</b> Mary Schäffer Trail	2.9 km loop	Easy stroll to viewpoint with interpretive panels. Lake side views and forest. <b>P</b> Maligne Lake	
<b>H</b> Moose Lake Trail	2.7 km loop	Forest trail through moose country to a tranquil lake. <b>P</b> Bald Hills	
<b>I</b> Bald Hills Trail	9 km return	Steep trail to alpine meadows with spectacular views of Maligne Lake. The reward is worth the work. <b>P</b> Bald Hills	

Easy Moderate Difficult



# Jasper East and Miette Hot Springs



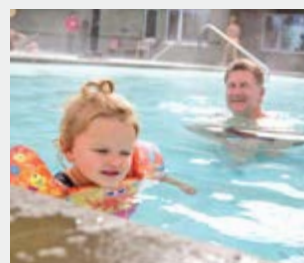
Sulphur Skyline (photo: Trevor Groth)

Highlights	Distance	Description	Primary Use
<b>A</b> ● Jasper House National Historic Site	32 km drive from Jasper on Highway 16	Short path to interpretive viewpoint. It looks over the former site of a fur trade post.	
<b>B</b> ◆ 31 ● Lower Pocahontas Mine Trail	900 m loop	Explore an old mine site. Wheelchair and stroller friendly.	
<b>C</b> ◆ 32 ■ Upper Pocahontas Mine Trail	1.7 km loop	Steep climb and descent. Grand valley view.	
<b>D</b> ◆ 35 ● Source of the Springs	1.2 km return	Stroll through the old aqua court site. Touch the source of the Miette Hot Springs.	
<b>E</b> ◆ 30 ◆ Sulphur Skyline	8.8 km return	Steep trail with views of Utopia Mountain, Fiddle Valley, and Ashlar Ridge.	

● Easy ■ Moderate ◆ Difficult

## Miette Hot Springs

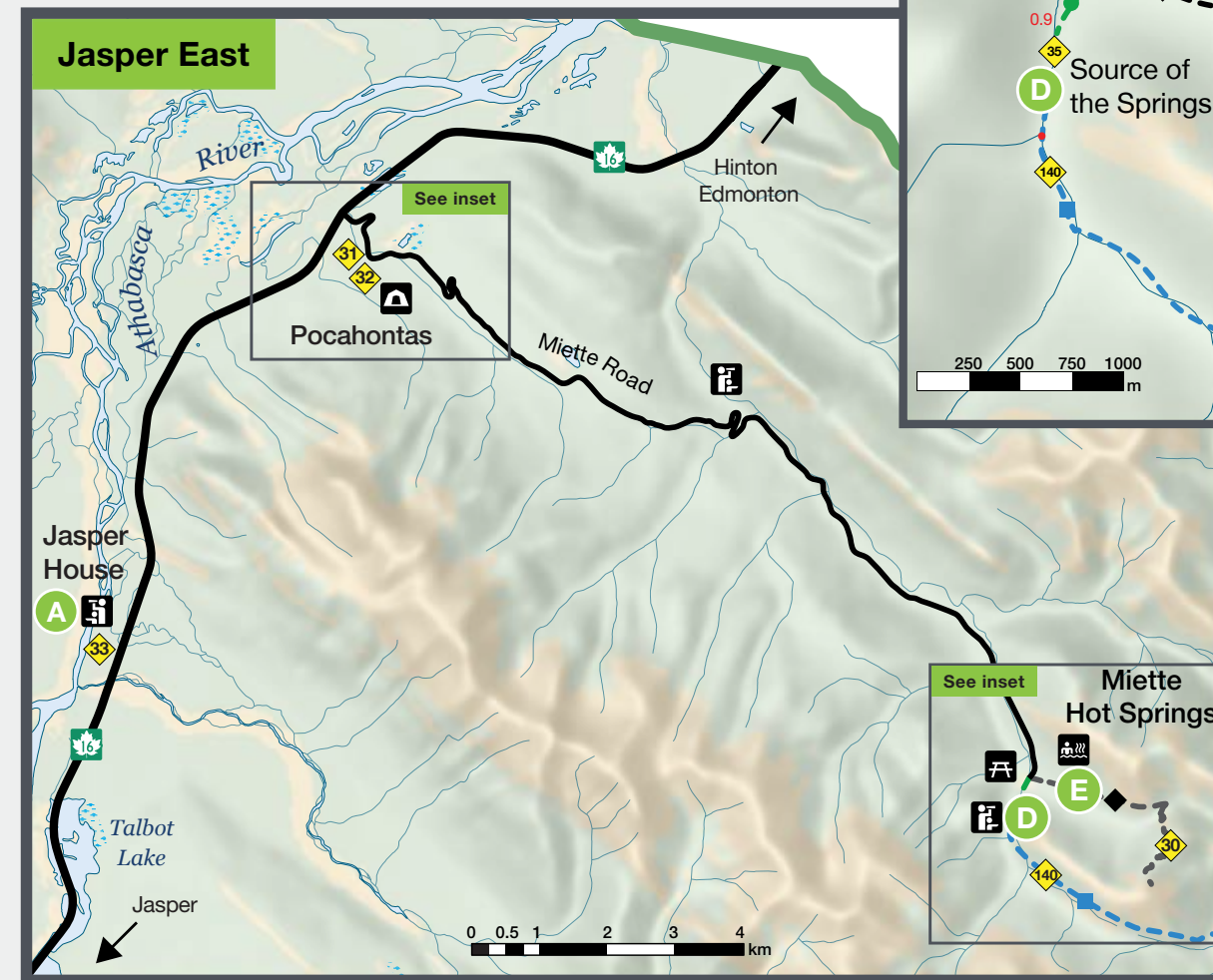
Miette Hot Springs is a 60 minute (61 km) drive one-way from Jasper. These are the hottest mineral springs in the Canadian Rockies. Water flows from the mountain at 54°C (129°F). We cool the water to a comfortable 40°C (104°F).



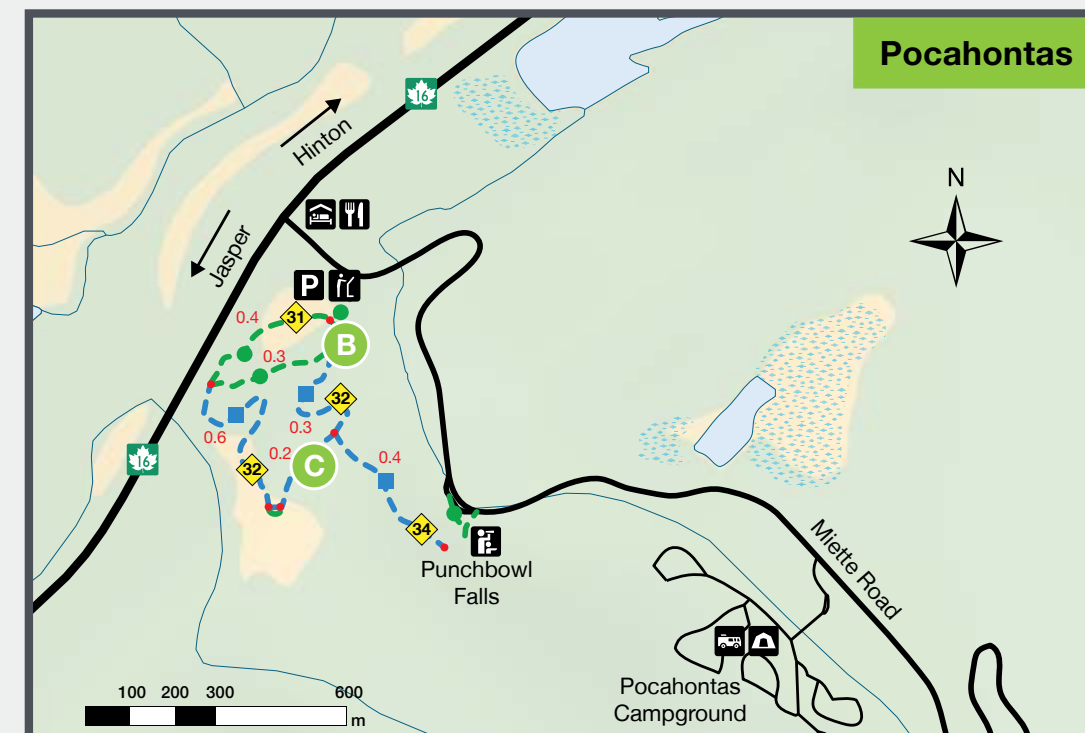
Soak Fee	
Adult (18-64)	\$7.21
Youth (3-17)	\$6.29
Child (under 3)	Free
Senior (65+)	\$6.29
Family (2 adults and 2 youth)	\$22.80

Hours of Operation	
May 1 – June 11	10:30 a.m. – 9:00 p.m.
June 12 – September 7	9:00 a.m. – 11:00 p.m.
September 8 - October 12	10:30 a.m. – 9:00 p.m.
October 13 - April 29, 2021	Closed

\*Swimsuits, towels and locker rentals are available.



**Legend**  
See full legend on p. 5



# Mount Edith Cavell



© Cavell Meadows Trail

# Icefields Parkway (Hwy 93)



© Icefields Parkway

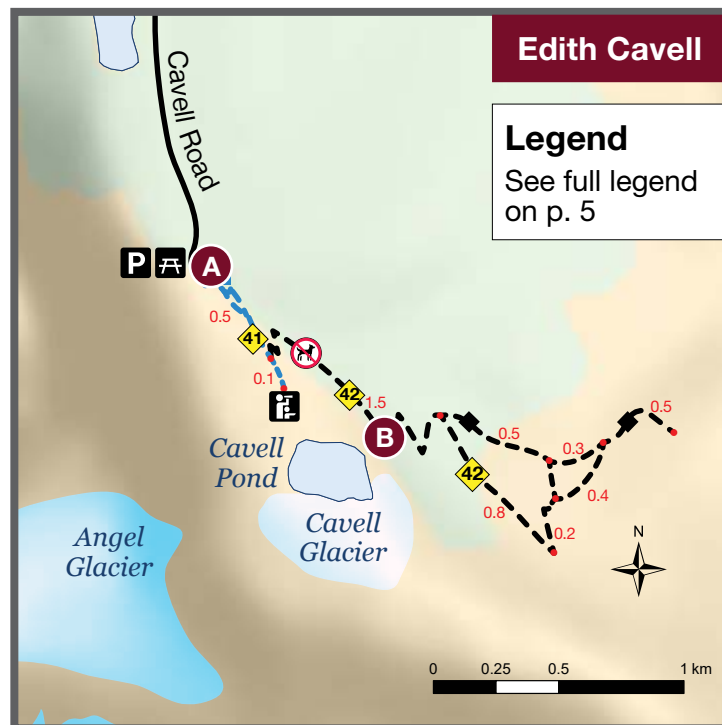
Highlights	Distance	Description	Primary Use
<b>A</b> <b>41</b> Path of the Glacier Trail	1.2 km return	Short paved trail. Steady uphill climb. Stunning views of Mount Edith Cavell and Angel Glacier.	
<b>B</b> <b>42</b> Cavell Meadows Trail	6-8 km return	Opens mid-July when snow melts. High alpine meadow. Array of wildflowers. Grand views.	

Moderate Difficult

**TIP:** Cavell Road opens June 15 (weather permitting). **Cavell Road is narrow and winding.**

Trailers and large motorhomes not permitted. Trailer drop-off area located in the parking lot at the start of Cavell Road on 93A. **Maximum length of vehicles: 7.5 metres or 25 feet.**

Visit before 10:00 a.m. or after 3:00 p.m. to avoid the crowd.

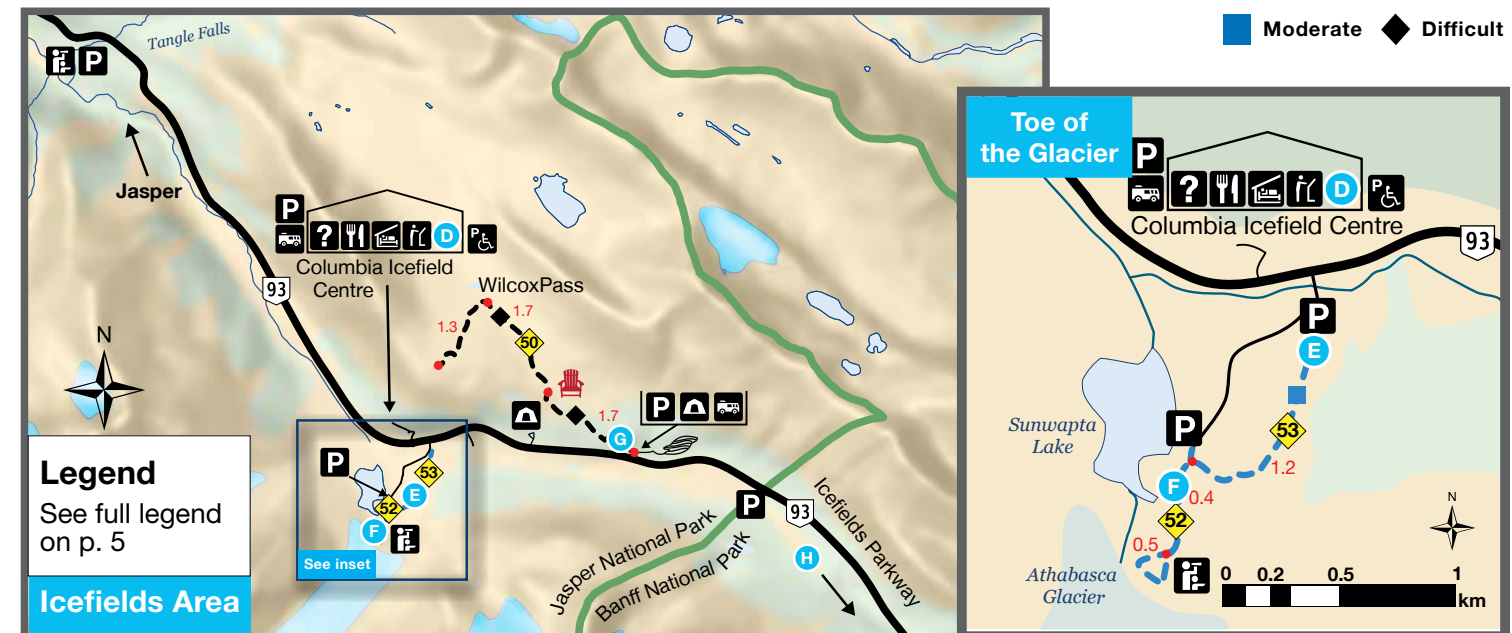


## Safety Tips:

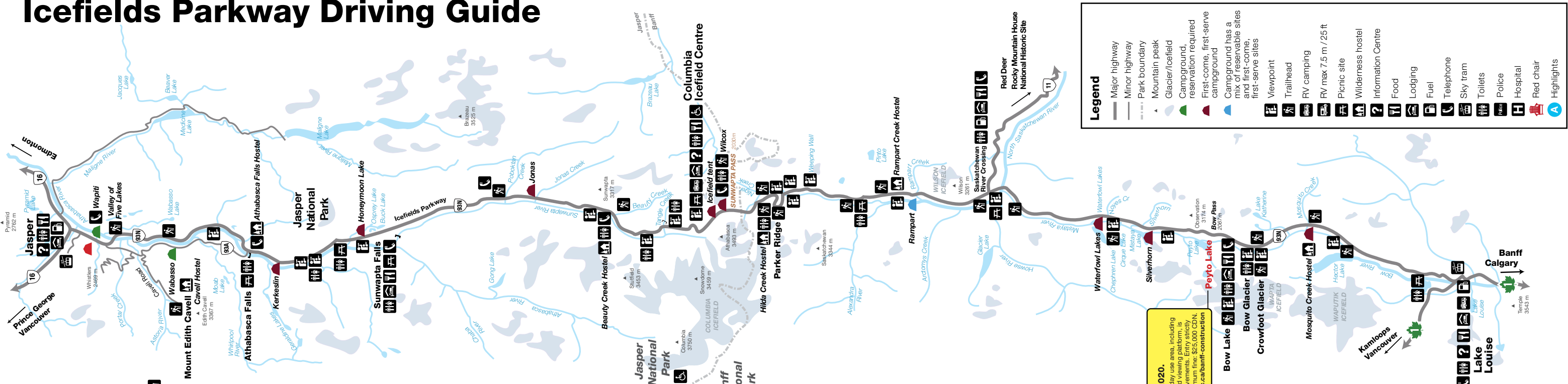
- High altitude may cause headaches and affect breathing.
- Know your physical limits.
- Drink plenty of water.
- Stay away from the cliffs and Cavell pond.
- Watch for falling boulders, snow and ice.
- Respect all posted signs.
- Do not feed the marmots. It is illegal to feed wildlife.

Highlights	Distance	Description	Primary Use
<b>A</b> Athabasca Falls	30 km drive from Jasper	Visit early morning or late evening to avoid peak crowds. <b>Do not go beyond railings.</b>	
<b>B</b> Sunwapta Falls	56 km drive from Jasper	Gorgeous views at upper and lower falls. <b>Do not go beyond railings.</b>	
<b>C</b> <b>125</b> Lower Sunwapta Falls Trail	2.8 km return	Less travelled. Three more lovely waterfalls.	
<b>D</b> Glacier Gallery	103 km drive from Jasper	Located in the Icefields Centre. Exhibit on glaciers and climate change. Movie theatre. Free admission.	
<b>E</b> <b>53</b> Forefield Trail	3.6 km return	Flat and rocky trail. Crosses moraine and glacial debris.	
<b>F</b> <b>52</b> Toe of the Athabasca Glacier Trail	1.4 km return	A steady climb. See how glaciers move over time.	
<b>G</b> <b>50</b> Wilcox Pass Trail	Red chairs 3.4 km return Wilcox Pass 6.8 km return	Mountain trail at high elevation. Quick access to alpine meadows and breathtaking views.	
<b>H</b> <b>51</b> Parker Ridge Trail	5.6 km return	Views of the Saskatchewan Glacier. Stay on the switchbacks. Short cuts damage the alpine ecosystem.	

Moderate Difficult



# Icefields Parkway Driving Guide



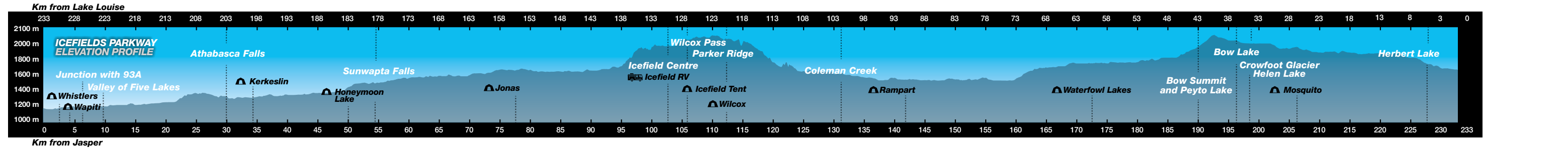
**Legend**

- Major highway
- Minor highway
- Park boundary
- Mountain peak
- Glacier/Icefield
- Campground, reservation required
- First-come, first-serve campground
- Campground has a mix of reservable sites and first-come, first-serve sites
- Viewpoint
- Trailhead
- RV camping
- RV max 7.5 m / 25 ft
- Picnic site
- Wilderness hostel
- Information Centre
- Food
- Lodging
- Fuel
- Telephone
- Sky tram
- Toilets
- Police
- Hospital
- Red chair
- Highlights

- Jasper Townsite** [Icons]
- Whistlers (CLOSED FOR THE SEASON)**  
Jasper Skytram (April to Oct.)
- Wapiti (Summer)** [Icon]
- Junction with Wabasso Road (HWY 93A)** [A B] [Icons]  
Access to Cavell Road, Cavell Hostel and Wabasso Campground
- Wabasso** (early May to late Sept.) [Icon]
- Valley of the Five Lakes** [Icon]
- Wabasso Lake** [Icon]
- Athabasca Pass Lookout** [Icon]
- Athabasca Falls** [A] [Icons]
- Athabasca Falls Hostel** [Icon]
- Kerkeslin** (mid-May to late Sept.) [Icon]
- Goats and Glaciers** [Icon]
- Mount Christie** [Icon]
- Honeymoon Lake** (mid-May to late Sept.) [Icon]
- Sunwapta Falls** [B C] [Icons]
- Sunwapta Falls Resort** (mid-May to mid-Oct.) [Icon]
- Poboktan Creek** [Icon]
- Jonas** (mid-May to mid-Sept.) [Icon]
- Mushroom and Diadem Peaks** [Icon]
- Beauty Creek Hostel** [Icon]
- Beauty Creek** [Icon]
- Stutfield Glacier** [Icon]
- Tangle Falls. Watch for sheep!** [Icon]
- Icefield Centre** (mid-April to mid-Oct.) [D E F] [Icons]  
Parks Canada information (May-Sept.) [Icon]
- Icefield RV** [Icon]
- Icefield Tent** (early June to mid-Oct.) [Icon]
- Wilcox Pass** [G] [Icon]
- Wilcox** (early June to September) [Icon]
- SUNWAPTA PASS** (Banff and Jasper boundary)
- Hilda Creek Hostel** [Icon]
- Parker Ridge** [H] [Icon]
- Nigel Pass** [Icon]
- Bridal Veil Falls** [Icon]
- Weeping Wall** [Icon]
- Coleman Creek** [Icon]
- Sunset Pass and Sunset Lookout** [Icon]
- Rampart Creek Hostel** (year-round) [Icon]
- Rampart** (early June to late Oct.) [Icon]
- Saskatchewan River Crossing** [Icon]  
Junction: David Thompson Highway (#11)  
The Crossing Resort (mid-Mar. to mid-Nov.) [Icon]
- Mistaya Canyon** [Icon]
- Waterfowl Lakes** (mid-June to early Sept.) [Icon]
- Silverhorn** (early June to end of Sept.) [Icon]
- Peyto Lake / Bow Summit** [Icon]  
**CLOSED FOR THE SEASON**
- Bow Glacier, Bow Glacier Falls** [Icon]
- Bow Lake** [Icon]
- Crowfoot Glacier** [Icon]
- Helen Lake, Dolomite Pass** [Icon]
- Mosquito Creek Hostel** (year-round) [Icon]
- Mosquito** [Icon]
- Hector Lake** [Icon]
- Hector Lake** [Icon]
- Herbert Lake** [Icon]
- Lake Louise** [Icon]

**Closed in 2020.**  
The Peyto Lake day use area, including the viewpoint and viewing platform, is closed for improvements. For more information, visit [parks.canada.ca/banff](http://parks.canada.ca/banff) or call 1-800-963-0000.

Km from Lake Louise	0	233
Km from Jasper	233	0



**There is no cell phone service between Athabasca Falls and Lake Louise. The Icefields Centre provides a 1 km radius of service from May to October.**

**Be prepared. In the mountains, snowfall occurs any time of the year. Check weather and road conditions before you travel.**

**WEATHER FORECAST:**  
[weather.gc.ca](http://weather.gc.ca)  
 Jasper 780-852-3185 • Banff 403-762-2088

**ROAD CONDITIONS:**  
 Dial 511  
[511.alberta.ca](http://511.alberta.ca) • [drivebc.ca](http://drivebc.ca)



**BLACK BEAR**

NO SHOULDER HUMP  
SMALL HEAD  
TALL EARS  
SHORT CLAWS

220  
12 cm

**GRIZZLY BEAR**

DISTINCTIVE SHOULDER HUMP  
LARGE HEAD  
SHORT ROUNDED EARS  
LONG CLAWS

110  
17 cm

BLACK BEAR OR GRIZZLY?

Note: Black bears and Grizzly bears come in a variety of colours.

Photo: R. Grays

**Coyote**

7 cm

?

**Characteristics**  
Medium-sized dog; thick, bushy tail, greyish brown in colour.

**Habitat**  
Valley bottoms.

Photo: M. Bradley

**Wolf**

12 cm

60-80

**Characteristics**  
Built like a large German Shepherd, with longer legs. Colour can vary from white to black.

**Habitat**  
Mainly valley bottoms.

Photo: M. Bradley

Female

**Elk**

11.5 cm

300

**Characteristics**  
Brown body, darker neck and large tan rump patch. Antlers slant back.

**Habitat**  
Valley bottoms and open areas.

Photo: M. Bradley

Female

**Bighorn Sheep**

9 cm

1200

**Characteristics**  
White rump and light brown fur and horns. Males: thick curled horns. Females: short narrow horns.

**Habitat**  
Near steep rocky terrain.

**Moose**

13 cm

180

**Characteristics**  
Long legs, shoulder hump, built like a horse with a large head, shovel-like antlers.

**Habitat**  
Wet and marshy areas.

**Mountain Goat**

8 cm

250

**Characteristics**  
Narrow black horns (male and female), beard, long white hair.

**Habitat**  
Near steep rocky terrain.



**Caribou**  
*Rangifer tarandus*  
Caribou are members of the deer family. Caribou are adapted to cold, harsh winters. They live in the alpine.

**Threatened by**  
Natural predators, human disturbance, habitat loss, and small population sizes.



**Olive-sided Flycatcher**  
*Contopus cooperi*  
This migrating bird sings a loud three-note whistle. "Quick, Three Cheers!". The flycatcher perches on top of tall trees.

**Threatened by**  
Habitat loss, fewer insects, and fire suppression.



**Little Brown Bat**  
*Myotis lucifugus*  
This small bat often roosts in buildings. Watch it hunt for insects at dusk.

**Endangered by**  
White-nose Syndrome fungus. This fungus grows on the nose of hibernating bats. White-nose Syndrome is spreading across North America.



**Haller's Apple Moss**  
*Bartramia halleriana*  
Haller's Apple Moss lives on shady cliff ledges and rocky mountain slopes. The moss is rare. It grows in only nine places across Canada (that we know of).

**Endangered by**  
Fire, human disturbance, and small population size.



**Northern Long-Eared Bat**  
*Myotis septentrionalis*  
Similar to the brown bat, it has longer ears, a longer tail and bigger wings.

**Endangered by**  
White-nose Syndrome.



**Common Nighthawk**  
*Chordeiles minor*  
This nighthawk makes a booming sound when it dives. Air rushes through the nighthawk's feathers. It sounds like a truck roaring by.

**Threatened by**  
Habitat loss, fewer insects, and fire suppression.



**Whitebark Pine Species at Risk**  
*Pinus albicaulis*  
Whitebark pine grows at tree line. Its needles are in bunches of five. This tree is a food source for many animals. It is the main food source for the Clark's nutcracker bird. The nutcracker caches the seeds. This helps the pine reproduce.

**Threatened by**  
White pine blister rust, mountain pine beetle, fire suppression, and climate change.

**Want to learn more?**  
For information about Species at Risk, visit:  
[parks.canada.ca/species-at-risk](https://parks.canada.ca/species-at-risk)

# Water Sports and Invasive Species



Lake Edith



Note: Annette, Edith, and Pyramid lakes have few parking stalls. The stalls fill quickly. Vehicle parking length is 8 metres (26 feet) maximum.

## Lake and beach regulations:

- Gas motors are not permitted on any water in Jasper National Park.
- Electric boat motors are only allowed on Pyramid, Patricia, Maligne, and Talbot lakes.
- No smoking and no liquor permitted on beaches.
- Dogs are only allowed in designated areas at Annette, Edith and Pyramid lakes.

## Help prevent the spread of invasive species

Invasive species transfer from one body of water to another on you, your clothing, gear, equipment and watercraft. Follow these steps before entering or upon leaving water bodies:

- **Clean** and dry everything that comes in contact with water.
- **Rinse** off all mud and debris from equipment and gear.
- **Drain** all water recreation equipment.
- **Dry** every item thoroughly before entering another water body.



INVASIVE SPECIES



Quagga Mussels



Whirling Disease



Didymo

Photos: BC Ministry of Environment, NWA New Zealand

For more information about fishing and water activities: [parkscanada.gc.ca/jasperwateractivities](http://parkscanada.gc.ca/jasperwateractivities)

# Fort St. James National Historic Site



Fort St. James National Historic Site

Visit: [parkscanada.gc.ca/fortstjames](http://parkscanada.gc.ca/fortstjames) to learn more or to book your stay.  
Open May 16 – September 7, 2020 • 250-996-7191 • [fortstjames@canada.ca](mailto:fortstjames@canada.ca)  
535 km from Jasper on Highway 16 West (6 hour drive)

## Fort St. James National Historic Site

Fur trade fun for families! Head west on Highway 16 to Fort St. James National Historic Site. Visit the southern shores of picturesque Stuart Lake. Travel back in time to 1896. Explore Canada's largest collection of wooden fur trade buildings.

## Fun choices for you:

- Barter like a fur trader.
- Experience the ways of Indigenous people in the fur trade.
- Take the "Escape the Fort" Challenge.
- Feed livestock in a fenced pasture.
- Watch "world class" chicken races.
- Try a legendary rack of ribs at the Café.
- Spend the night in the Murray House. Sleep in 19th century bliss.
- Watch sunset magic over Stuart Lake.
- Bring a tent and camp under the stars.
- Snap a Red Chair moment.



# Human food and garbage kill wildlife.

# Park Regulations

*National park laws protect your safety. They protect the park for future visitors to enjoy.*



## THESE ARE THE LAW:

- **Do not feed wildlife.**
- **Never leave food or garbage unattended.**
- **Do not litter.**

## Safely store all food and scented items.

**Unsafe wildlife encounters have more than doubled in recent years. These result from human action that is unsafe.**

Too often visitors leave food and garbage in places or containers that are easy for animals to access. Human food and garbage change the behaviour of wild animals. Wild animals lose their fear of humans. This does not mean they are tame. Wild animals may attack humans when food or garbage is present.

Even small animals can open coolers and containers that are not secure. Birds and squirrels damage tents and equipment in search of food. Large and small animals damage property and injure humans every year.

Wild animals suffer from eating human food. Human food is not a natural diet for wild animals. It often causes aggression in wild animals. Every year, park employees must kill aggressive wild animals to keep humans safe.

**You can change the trends. Keep yourself, other visitors, and wild animals safe. Secure your food and scented items. Use secure food lockers or the trunk of your vehicle.**



### **NO CAMPFIRES OUTSIDE OF METAL FIREPITS.**

This helps prevent wildfires. It keeps the site clean for the next visitor to enjoy.



### **NO CAMPING UNLESS IN A DESIGNATED PARK CAMPSITE WITH PERMIT.**

You can not camp at roadside pullouts, trailheads, and day-use areas.



### **DO NOT FEED OR APPROACH WILDLIFE.**

All wildlife is potentially dangerous. Park animals are wild even if they appear tame.



### **DO NOT COLLECT NATURAL OBJECTS.**

Natural objects are sources of food and shelter for wild animals and plants.



### **NO DRONES.**

Jasper is a no drone zone. Report all drone use sightings to Jasper Dispatch 780-852-6155.



### **KEEP DOGS ON A LEASH.**

This is for your safety, the safety of your pet, and the safety of other visitors.

**It is your responsibility to know and follow park regulations. For a complete list of regulations, visit: <https://laws-lois.justice.gc.ca/eng/acts/N-14.01/>**



## **Watch for Wildlife Guardians on the road.**

They work to keep you and wild animals safe.

# Campgrounds

See legends and locations on page 5, 14 or 15.

Campgrounds	Open dates	Sites	Prices	Full hook-up	Electrical	Sani-dump	Flush toilets	Pit toilets	Showers	Firepit	Cooking shelter	Drinking water	Accessible	Interpretive programs	oTENTik	Disabled Access
Whistlers	<b>CLOSED FOR RECONSTRUCTION</b>															
Wapiti (summer)	May 6 – Oct. 12	364	\$28.00 – \$33.01													
Wapiti (winter)	Oct. 12 – May 4, 2021	75	\$28.00 – \$33.01													
Wabasso	May 6 – Sept. 28	231	\$21.97 – \$28.00													
Pocahontas	May 13 – Sept. 14	140	\$21.97													
Overflow	May 13 – Sept. 21	280	\$16.05													
Snaring	May 13 – Sept. 28	62	\$16.05													
Kerkeslin	May 13 – Sept. 21	42	\$16.05													
Honeymoon Lake	May 13 – Sept. 21	35	\$16.05													
Jonas	May 13 – Sept. 14	25	\$16.05													
Icefield Centre (RV)	May 13 – Oct. 12	100	\$16.05													
Icefield (tents only)	June 3 – Oct. 12	33	\$16.05													
Wilcox	June 3 – Sept. 21	46	\$16.05													
Rampart	June 3 – Oct. 12	50	\$17.99													
Waterfowl Lakes	June 12 – Sept. 7	116	\$21.97													
Silverhorn	June 3 – Sept. 27	45	\$16.05													
Mosquito	June 3 – Oct. 12	32	\$17.99													
Lake Louise Trailer	Open Year Round	189	\$33.01													
Lake Louise Tent	May 30 – Sept. 27	206	\$28.00													

- Reservation needed for all sites in the campground.
- Campground has first-come, first-serve sites only. Self-register at the campground. In summer months, arrive before mid-day for the best chance of getting a site.
- Campground has a mix of reservable sites and first-come, first-serve sites.
- Campground is undergoing upgrades. Check online for the latest information and opening dates: [reservation.pc.gc.ca](http://reservation.pc.gc.ca)

## Book online or call for info and reservations.

Campgrounds fill quickly. Reserve your campsite online or call ahead.

**1-877-RESERVE (737-3783) OR PARKSCANADA.GC.CA/RESERVATION**

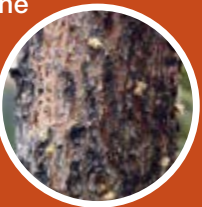


## Why are the trees red?



The pine beetle is the cause. Native to North American forests, pine beetles tunnel into mature pine trees to lay their eggs under the bark. They carry along

fungi that turns tree tissue into food for the larvae. This disrupts the flow of nutrients within the tree and kills it. Needles slowly turn red about one year after a successful pine beetle attack.



## Want to learn more?

For information ask a Parks Canada staff member or visit:

[Parkscanada.gc.ca/jasper-beetle](http://Parkscanada.gc.ca/jasper-beetle)

## Directory

**PARKS CANADA  
JASPER INFORMATION CENTRE**  
500 Connaught Drive • 780-852-6176  
April 1 – May 13 • 9:00 a.m. – 5:00 p.m.  
May 14 – Sept. 30 • 9:00 a.m. – 7:00 p.m.  
October 1 – March 31 • 9:00 a.m. – 5:00 p.m.

**ICEFIELD CENTRE HOURS**  
May 14 – Sept. 29 • 10:15 a.m. – 5:00 p.m.  
[parkscanada.gc.ca/jasper](http://parkscanada.gc.ca/jasper)

### SOCIAL MEDIA



**TRAIL CONDITIONS REPORT**  
[parkscanada.gc.ca/jaspertrails](http://parkscanada.gc.ca/jaspertrails)

**PARKS CANADA RESERVATION SERVICE**  
1-877-737-3783  
[parkscanada.gc.ca/reservation](http://parkscanada.gc.ca/reservation)

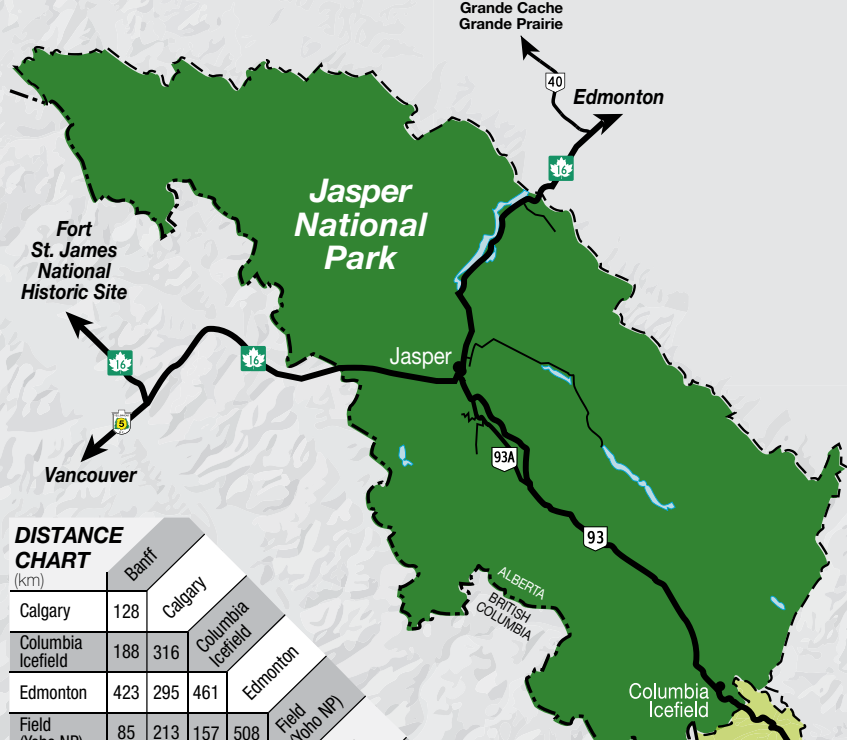
**FRIENDS OF JASPER NATIONAL PARK**  
Maps and guide books:  
780-852-4341 • [friendsofjasper.com](http://friendsofjasper.com)

**TOURISM JASPER**  
780-852-6236 • [jasper.travel](http://jasper.travel)

**JASPER WEATHER**  
780-852-3185 • [weather.gc.ca](http://weather.gc.ca)

**ROAD CONDITIONS**  
Dial 511 • [511.alberta.ca](http://511.alberta.ca) • [drivebc.ca](http://drivebc.ca)

**EMERGENCY**  
**Dial 911**  
Cell phone service is not always reliable. 780-852-3100 (satellite phone)



**Supporting Our Parks**  
 Purchase your park entry pass at gates, information centres, or campground kiosks.

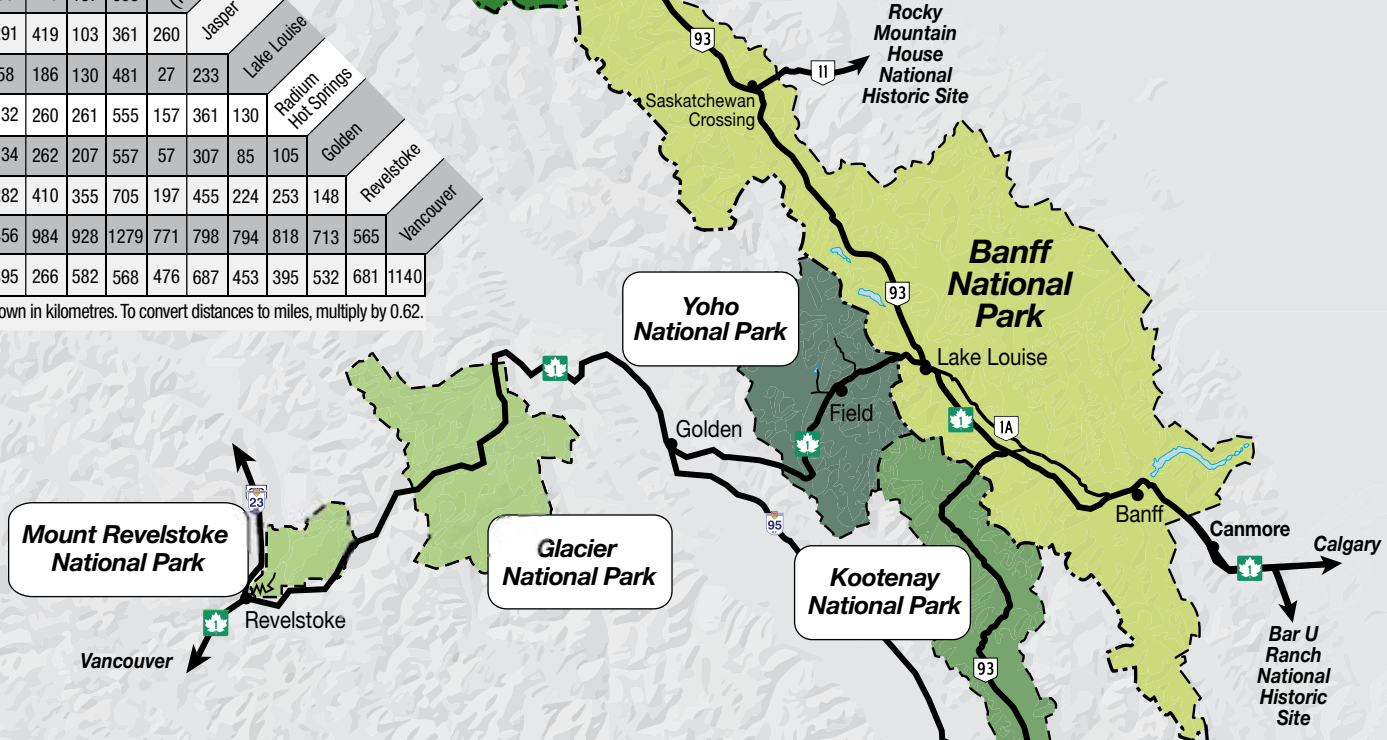
---

*All youth 17 and under receive free entry into national parks and national historic sites.*

**DISTANCE CHART**  
(km)

	Banff														
Calgary	128	Calgary													
Columbia Icefield	188	316	Columbia Icefield												
Edmonton	423	295	461	Edmonton											
Field (Yoho NP)	85	213	157	508	Field (Yoho NP)										
Jasper	291	419	103	361	260	Jasper									
Lake Louise	58	186	130	481	27	233	Lake Louise								
Radium Hot Springs	132	260	261	555	157	361	130	Radium Hot Springs							
Golden	134	262	207	557	57	307	85	105	Golden						
Revelstoke	282	410	355	705	197	455	224	253	148	Revelstoke					
Vancouver	856	984	928	1279	771	798	794	818	713	565	Vancouver				
Waterton	395	266	582	568	476	687	453	395	532	681	1140				

Distances are shown in kilometres. To convert distances to miles, multiply by 0.62.



**FOR EMERGENCIES DIAL 911**  
 (Police, fire and ambulance)  
 Cell phone coverage is not reliable in all areas of the mountain parks.

**Waterton Lakes National Park\***  
 \*266 km from Calgary



Human food and garbage **kill** wildlife.



**Do not litter.**