




SUMMER 2017

JASPER NATIONAL PARK

Adventure Guide



Également offert en français

 Lake Edith



Parks Canada
Parcs Canada

Canada



Jasper Townsite

The celebration has begun for Canada's 150th birthday! We are absolutely thrilled to welcome you to our very special and very wild national park. Thanks to the Government of Canada, we will be offering our visitors complimentary entry at our park gates all year long.

Welcome to Jasper National Park

Our charming mountain town offers easy access to majestic peaks, endless outdoor adventure, pristine wilderness and abundant wildlife. Joining Banff, Yoho and Kootenay national parks and three adjacent provincial parks, Jasper is part of the magnificent Canadian Rocky Mountain Parks UNESCO World Heritage Site. It's also home to the world's second largest dark sky preserve.

Park exploration has been ongoing for many years. From Indigenous Peoples and early fur traders to railway workers laying ties for two transcontinental routes, millions of people have explored these valleys and mountain passes. And you can too! Discover one or all of our five spectacular regions, visit our famous red chair locations or participate in Parks Canada led programs and events.

We hope you enjoy your visit to Jasper National Park. If you have any questions, our friendly Parks Canada staff will gladly help.

Contents

Jasper Townsite Map	3
Top 5 Regions	4
Jasper National Park Map	5
Around Town	6
Trail Map	7
Programs and Events	8
Maligne Valley	9
Edith Cavell	10
Edith Cavell Permit	11
Jasper East and Miette Hot Springs	12
Icefields Parkway and Area	13
Icefields Parkway Driving Guide	14
Campgrounds	16
Camping	18
Wildlife Identification	20
Family and Friends of Jasper	22
Mountain Safety	23

Directory

PARKS CANADA
JASPER INFORMATION CENTRE
500 Connaught Drive
780-852-6176 • pc.gc.ca/jasper
HOURS

April 1 - May 18 • Daily 9 a.m. to 5 p.m.
May 19 - Oct. 9 • Daily 8 a.m. to 8 p.m.
Oct. 10 - Nov 1 • Daily 10 a.m. to 5 p.m.

SOCIAL MEDIA



JASPER TRAIL CONDITIONS REPORT
pc.gc.ca/jaspertrails

TOURISM JASPER
780-852-6236 • jasper.travel

FRIENDS OF JASPER NATIONAL PARK
Maps and guide books:
780-852-4341 • friendsofjasper.com

RESERVATIONS
1-877-737-3783
Online booking: reservation.pc.gc.ca

GENERAL
Jasper weather: 780-852-3185
weather.gc.ca

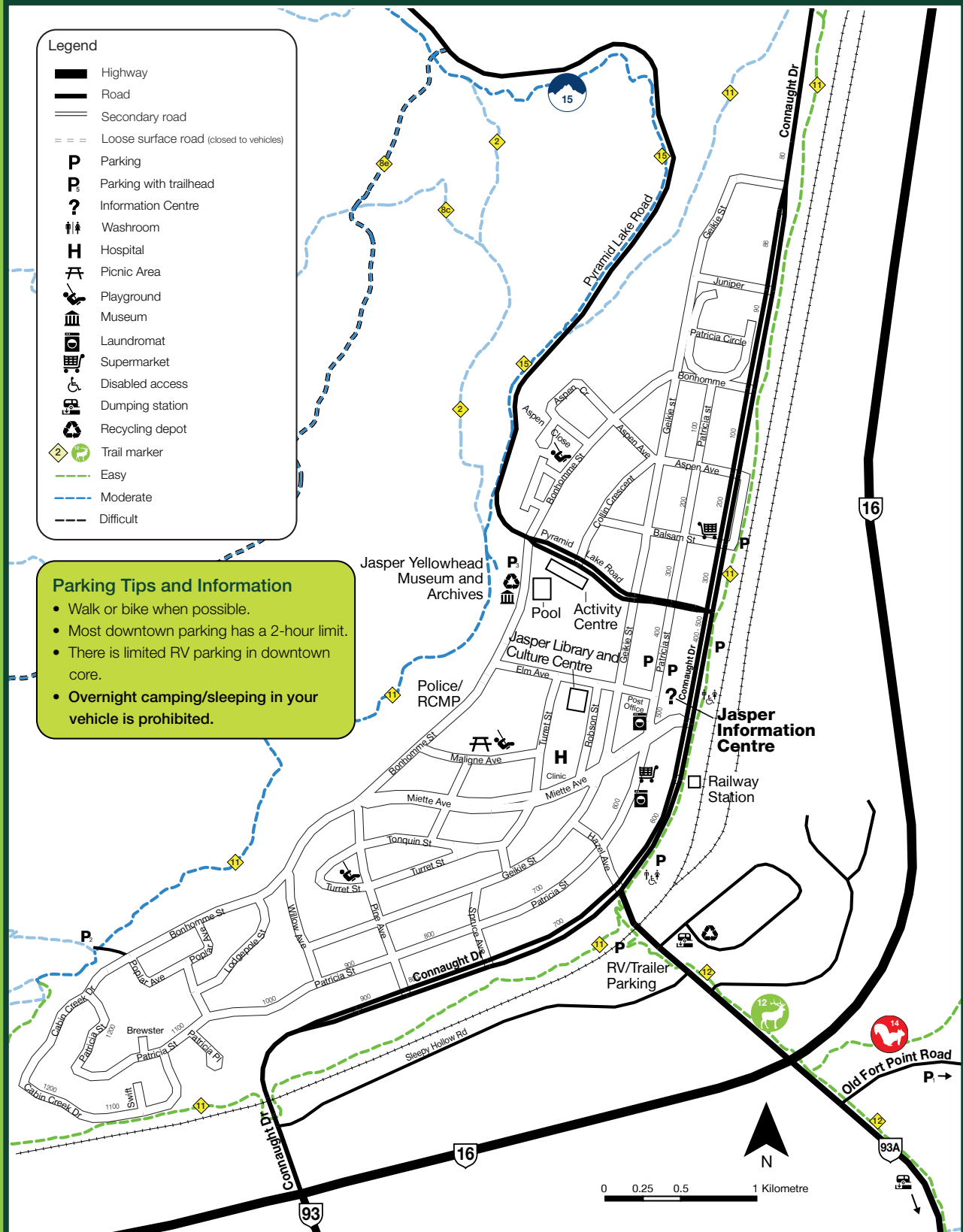
Road conditions: 511
alberta511.ca • drivebc.ca

EMERGENCY

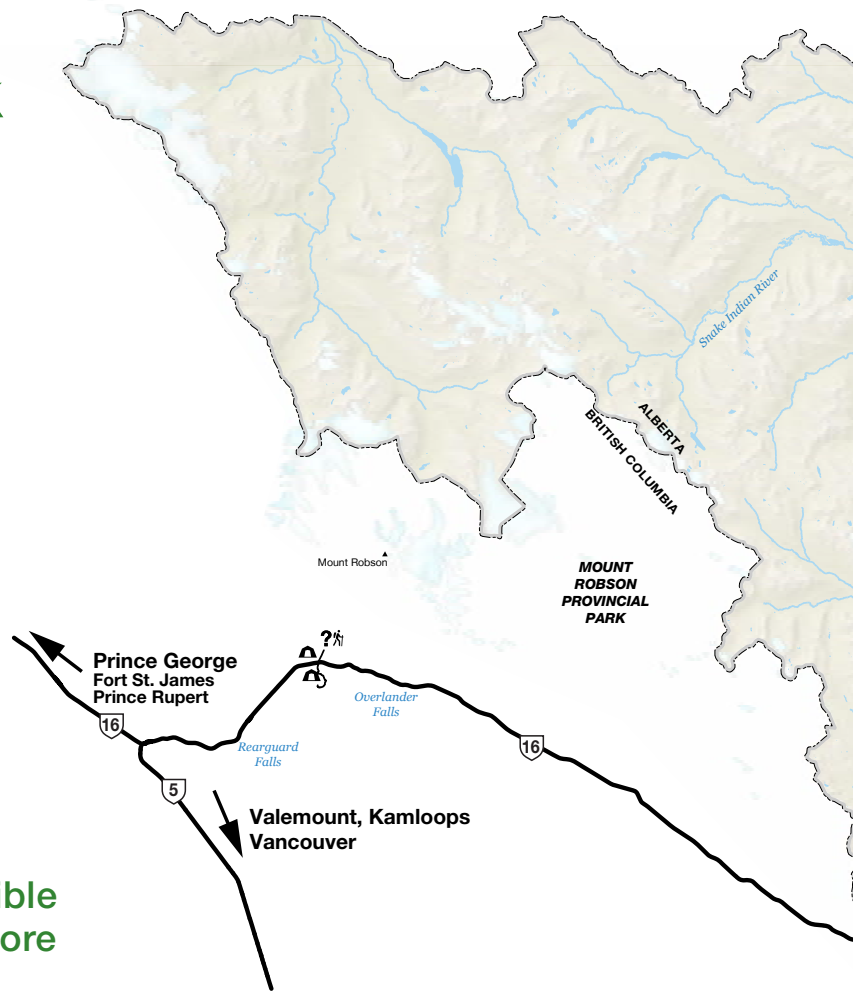
Dial 911
Cell phones are not always reliable.
780-852-3100 (satellite)

Jasper Townsite

Experience rocky mountain culture in the heart of Jasper's townsite. Visit the historic Parks Canada Information Centre, travel back in time at the Jasper Yellowhead Museum and savour some of Jasper's authentic flavours and quaint gift shops.



Jasper National Park



The best way to explore this incredible landscape is to take a day and explore each of its **top 5 regions**.

1. AROUND TOWN

You don't have to go far beyond the Jasper townsite to enjoy park wilderness. Drive, bike or hike up to Pyramid Lake (7 km) and explore the many trails. For water lovers, grab or rent a kayak or paddleboard and head out to Lake Edith and Lake Annette for a refreshing paddle!

2. MALIGNE VALLEY

One of the most stunning areas in Jasper National Park is Maligne Lake. If you have time, it's a must see! Take a scenic drive through this beautiful valley (48 km). Visit Maligne Canyon, pass a disappearing lake (Medicine Lake), go for a paddle, take a lakeshore stroll or gear up for a challenging hike.

3. EDITH CAVELL

Situated off of 93A, explore the awe-inspiring Mount Edith Cavell. This summer the Edith Cavell parking lot will be under construction to receive much needed improvements. For public safety, the road will have controlled access (June 19 – September 18) and a permit will be required to travel to the top. Please visit **page 11** for details on obtaining a permit.

4. JASPER EAST AND MIETTE

Soak in the hottest hot springs in the Rockies, take a short walk to the source of the springs or hike up to Sulphur Skyline to see 360 degree views.

5. ICEFIELDS PARKWAY AND AREA

Winding 232 glorious kilometres through the heart of Jasper and Banff national parks, the Icefields Parkway has been called one of the most scenic drives in the world. Glaciers, viewpoints, waterfalls, picnic spots and hikes galore can be found along this spectacular parkway!

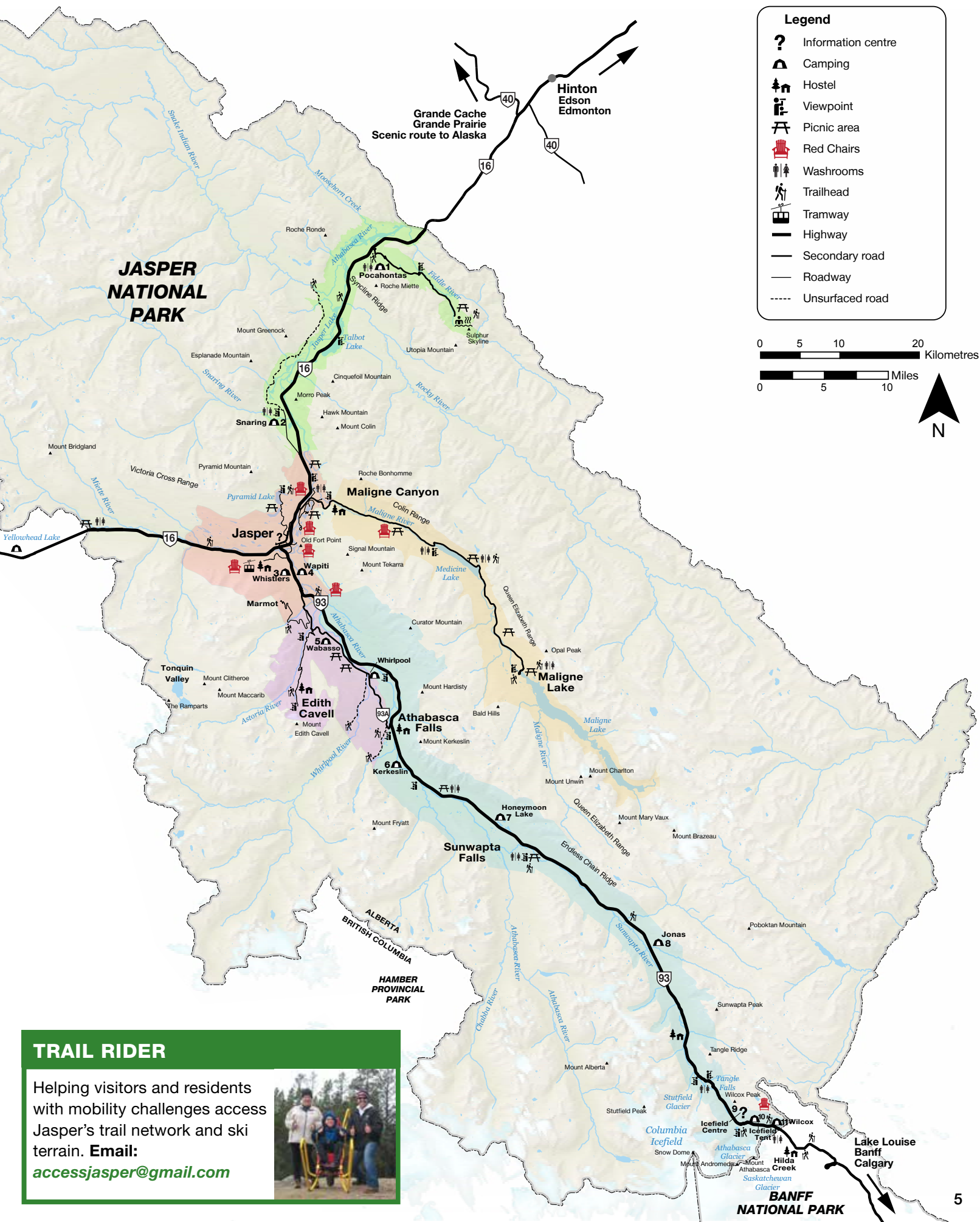


JASPER NATIONAL PARK RED CHAIRS

Discover all seven sets of red chairs in the following regions:

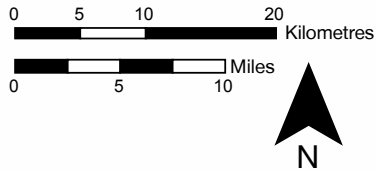
- **Around Town**
- **Maligne Valley**
- **Icefields Parkway**

Scope out these picture perfect locations at:
pc.gc.ca/jasperredchair #sharethechair



Legend

- ? Information centre
- ⛖ Camping
- 🏠 Hostel
- 👁️ Viewpoint
- 🪵 Picnic area
- 🪑 Red Chairs
- 🚻 Washrooms
- 👤 Trailhead
- 🚠 Tramway
- Highway
- Secondary road
- Roadway
- Unsurfaced road



TRAIL RIDER

Helping visitors and residents with mobility challenges access Jasper's trail network and ski terrain. Email: accessjasper@gmail.com





Around Town



Stay close to town but feel like you ventured far. Whether you are looking for a scenic hike, bike ride, paddle or leisurely walk, all of these activities are readily accessible from the Jasper townsite.

FEATURED ACTIVITIES

- Paddle or swim at lakes Annette or Edith.
- Bike the Pyramid Bench.
- Explore Pyramid Island.
- Visit the Information Centre and Heritage Firehall.
- Take a historical walk around town.
- Discover five sets of Red Chairs all within a 10-km radius of the Jasper townsite.



FEATURED TRAILS	Distance	Description
Jasper Discovery Trail	8.3 km loop	Loop around town with multiple access points.
Wapiti Trail	9.4 km return	Access Whistlers and Wapiti campgrounds.
Lake Annette	2.4 km return	A newly paved and accessible waterfront trail around beautiful Lake Annette.
Old Fort Point Loop	3.8 km return	A steep trail with excellent townsite and valley views.
Valley of the Five Lakes	4.5 km loop	Explore five unique and spectacular lakes along the way.

Easy Moderate

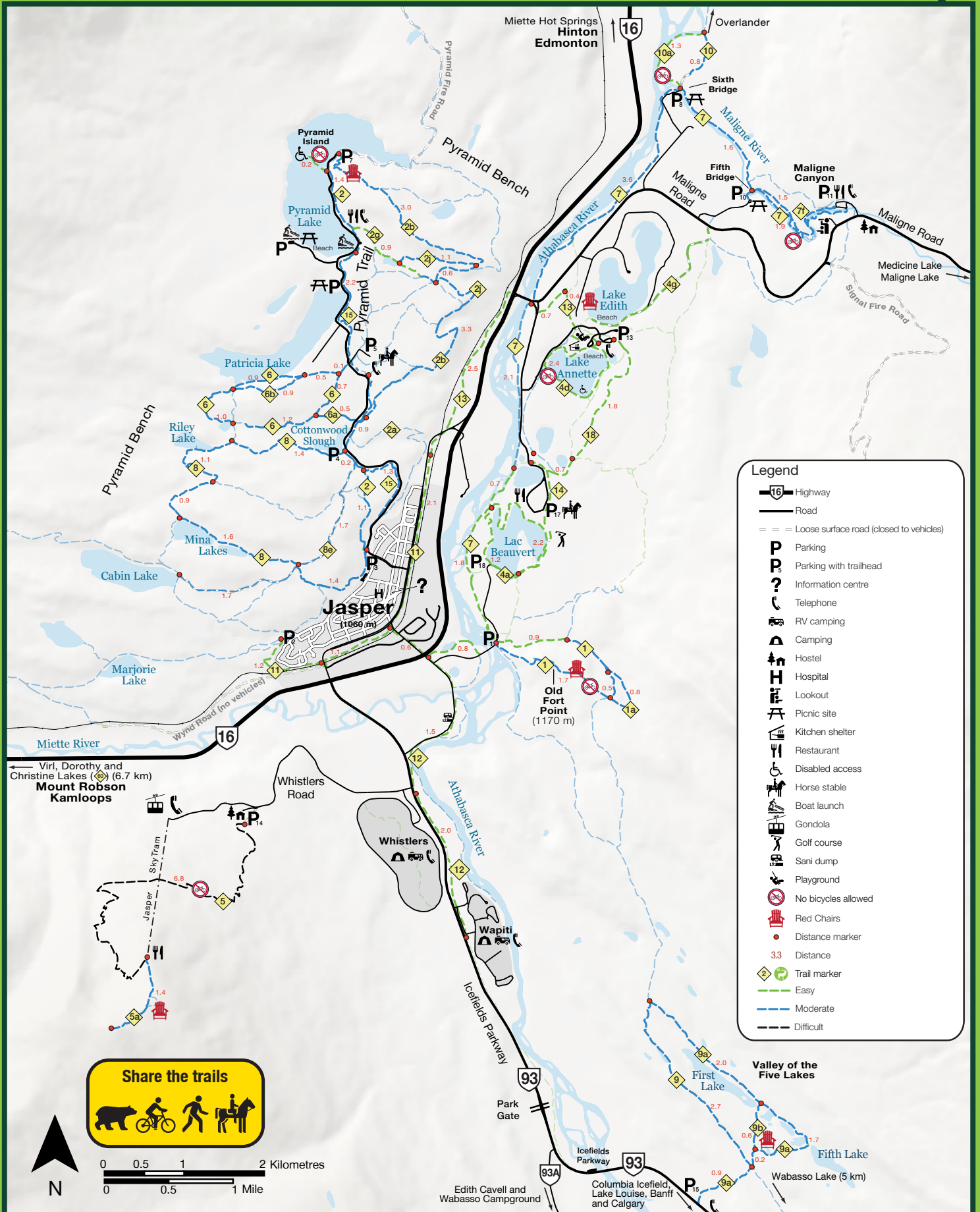
Venture Beyond!

For a difficult and rewarding hike with panoramic views, try the Whistlers Trail (13.6 km return, trails 5 and 5a). Take a picture at the new set of Red Chairs along the way.



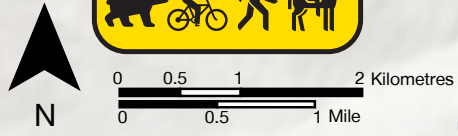
Whistlers Trail

Trail Map




Legend

- Highway
- Road
- Loose surface road (closed to vehicles)
- Parking
- Parking with trailhead
- Information centre
- Telephone
- RV camping
- Camping
- Hostel
- Hospital
- Lookout
- Picnic site
- Kitchen shelter
- Restaurant
- Disabled access
- Horse stable
- Boat launch
- Gondola
- Golf course
- Sani dump
- Playground
- No bicycles allowed
- Red Chairs
- Distance marker
- Distance
- Trail marker
- Easy
- Moderate
- Difficult



Programs and Events Around Town



Discover Jasper's Stories! Parks Canada interpreters are storytellers and guides who want to share their knowledge and love of Jasper National Park. Look for our friendly staff and their stashes of cool things like animal hides, skulls, horns, antlers and fossils!

Interpretive programs

All programs are family friendly and are offered in and around the Jasper townsite at:

Whistlers Campground: During the months of July and August, take in one of the Xplorer Programs (7:00 p.m.) or catch a show at Whistlers Outdoor Theatre (9:00 p.m.).

Heritage Fire Hall: Through July and August watch for Street Theatre and Tipi Teachings in town next to the Information Centre.

Program dates:

Spring: May 19 – June 30 (weekends only)

Summer: July 1 – Aug 31 (daily programs)

Fall: Sept 1 – Oct 31 (weekends only)

Wildlife Guardians

Our Wildlife Guardian team will be patrolling the roads beginning in May. Through interpretation and traffic management, they help visitors photograph and connect with some of Jasper's most intriguing animals without having to risk a dangerous close encounter. Look for this not-to-be-missed van!



Dark Sky Preserve

On March 26, 2011 the Royal Astronomical Society of Canada (RASC) officially designated Jasper National Park as a Dark Sky Preserve. That means the park makes a special commitment to protect and preserve the night sky and reduce light pollution.

In fall and winter, park interpreters offer dark sky programs that highlight the importance of maintaining our dark sky status from both a light reduction perspective and for the benefit of Jasper's nocturnal critters.

Did you know?

Encompassing over 11,000 km², Jasper National Park is the second largest dark sky preserve in the world!

Parks Canada Activity Booklets

Xplorer booklets (for kids ages 6 - 11) and **Club Parka booklets** (for kids under 6) are to help families discover the park and do activities together. Pick up the free booklets at information centres, campground kiosks and at interpretive programs.



To learn more about our Parks Canada programs, activities and schedules, visit us at: pc.gc.ca/jasper-interpretation

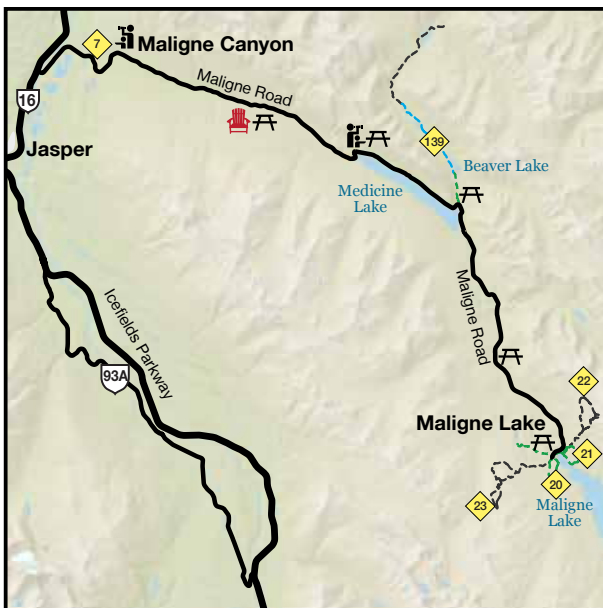
Maligne Valley



Take a day and explore the majesty and awe of Maligne Valley. Picnic along the way, visit Maligne Canyon, pass a disappearing lake, get out on the water for a paddle or challenge yourself to a rewarding hike.



© Medicine Lake



FEATURED ACTIVITIES

- Visit Maligne Canyon, a stunning deep limestone gorge only 8 km from town.
- Stop at Medicine Lake (disappearing lake) and observe the regrowth from the 2015 Excelsior Wildfire.
- Picnic at various sites along the way.
- Canoe or kayak on stunning Maligne Lake.
- Take a boat tour to the iconic Spirit Island.

FEATURED TRAILS	Distance	Description
Moose Lake Loop	2.7 km loop	Gentle rolling terrain through a forest.
Mary Schäffer Loop	3.2 km loop	An easy trail with gorgeous lakeshore views.
Maligne Canyon	4.4 km return	Enjoy stunning canyon views.

Easy Moderate

Venture Beyond!

For the avid hiker looking for amazing views of Maligne Lake and surrounding mountain vistas, take a trek up the Bald Hills (10.4 km return, trail 23).



© Bald Hills



Edith Cavell



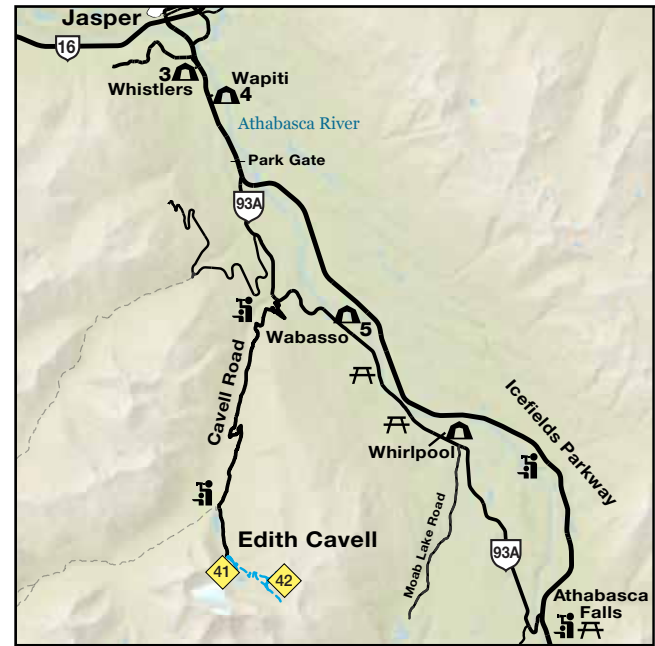
The Angel Glacier and Cavell Pond are one of Jasper National Park's most iconic viewpoints. This year you will need a permit to travel up the Cavell Road. Please refer to page 11 for more information.

Path of the Glacier Trail

FEATURED ACTIVITIES

- Travel up the relatively steep and meandering road to Edith Cavell (29 km from the townsite), keep an eye out for wildlife!
- Hike to the Path of the Glacier (800 m to the lookout)—the effort is certainly worth the jaw dropping views you will experience.

Expect delays along 93A both north and south bound due to the Mount Edith Cavell permit process for 2017 (see page 11).



FEATURED TRAILS	Distance	Description
41 Path of the Glacier Trail	1.6 km return	A short hike with stunning views of Mount Edith Cavell.

Moderate

Venture Beyond!

Hike the Cavell Meadows Trail (7 km return, trail 42), a moderate hike with absolutely stunning views of the Angel Glacier, Cavell Pond and colourful alpine meadows.



Angel Glacier



Edith Cavell Permit

The Mount Edith Cavell Day-use Area continues to receive much needed improvements this year. During summer 2017, construction will be taking place on the parking lot and access road at the end of the Cavell Road. This will provide safer access, additional parking and an improved visitor experience to the area. Due to this impending construction, a permit is required to travel to Mount Edith Cavell.

Limited public access to this destination remains available in 2017 through a free vehicle permit/quota system.

- A total of 180 vehicle permits will be allotted each day to access the area at staggered times between 8:30 a.m. and 8:00 p.m. This ensures adequate and safe parking during construction.
- Between the hours of 8:00 p.m. and 8:30 a.m., the gate at the bottom of the Cavell Road will be closed and locked for construction and safety reasons.

How do I get my vehicle permit to visit Mount Edith Cavell?

- When the Cavell Road is open for the season (June 19 – September 18), permits will be available in person outside of the Jasper National Park Information Centre between 8:00 a.m. and 10:00 a.m. daily.
- You may pick up your permit up to three days before your trip date.
- Permits are first-come first-serve and non-reservable.
- Only one permit is required per vehicle.



We appreciate your cooperation as we work on improving one of Jasper National Park's most visited and iconic places.

For further details, please visit pc.gc.ca/jasper.



Jasper East and Miette Hot Springs

Explore the Eastern side of Jasper. Travel along Highway 16 East and enjoy stops along the way at Talbot Lake and Jasper House. Don't miss out on the Miette Hot Springs, a 61-km drive from the Jasper townsite.



Source of the Springs

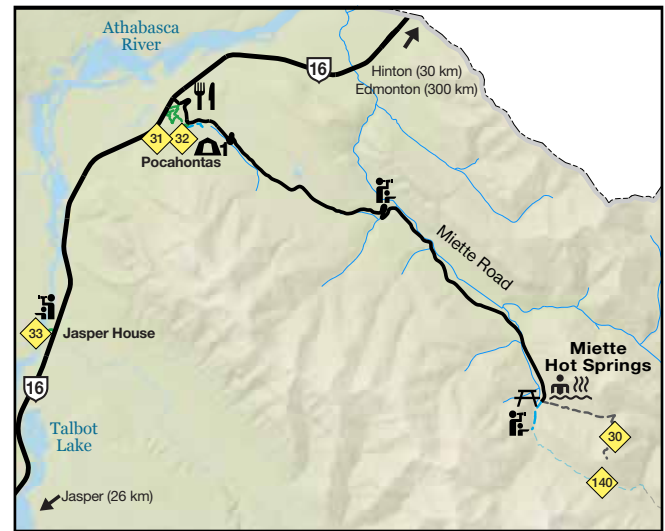
FEATURED ACTIVITIES

Highway 16 East

- Visit the Jasper House lookout for a view of one of Jasper National Park's historic sites.

Miette Hot Springs

- Stop at the Ashlar Ridge Viewpoint, a massive wall of limestone just 8.5 km in along the Miette Road.
- Soak in the hottest hot springs in the Canadian Rockies (17 km from the beginning of the Miette Road).



FEATURED TRAILS	Distance	Description
Pocahontas Mine Trail	Lower loop 800 m Upper loop 1.7 km	Step back in time as you explore the old Pocahontas Mine site.
Jasper House Trail	700 m return	Short walk to a viewpoint of a historic site.
Source of the Springs	1.2 km return	Stroll by ruins of the old pool en route to the source.

Easy Moderate



Sulphur Skyline

Venture Beyond!

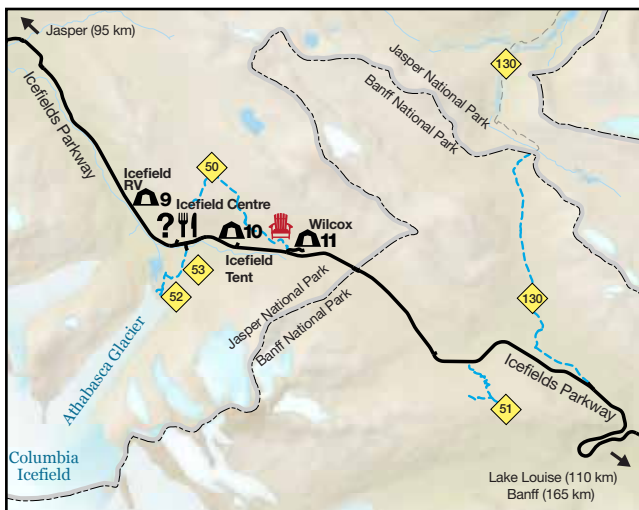
If you enjoy a challenging yet cruisy bike ride, the Overlander Trail off Highway 16 (15 km one way; trail 10) is an epic ride. Pick up your Mountain Biking Guide at the Information Centre. Hiking enthusiasts can go up the Sulphur Skyline Trail (8 km return, trail 30). Afterwards, treat yourself to a rewarding soak in the hot springs.

Icefields Parkway and Area



Red Chairs at Wilcox Pass

Voted one of the most scenic drives on the planet!
The Icefields Parkway (Highway 93) connects Banff National Park and Jasper National Park.



FEATURED ACTIVITIES

- Stop at the famous Athabasca Falls (30 km south of Jasper).
- Continue to Sunwapta Falls (55 km south of Jasper) and walk to the lower falls.
- Visit the Icefield Centre (103 km) and walk to the Toe of the Athabasca Glacier.
- Hike Wilcox Pass to the Red Chair location or further if time permits to experience stunning views of the Athabasca Glacier.

FEATURED TRAILS

Distance

Description

Lower Sunwapta Falls	2.6 km return	A rewarding short hike with beautiful waterfalls.
Toe of the Athabasca Glacier	1.8 km return	Enjoy close-up views of the toe of the glacier.
Wilcox Pass	2.4 km return first viewpoint 8 km return to the pass	Climb quickly above treeline to expansive meadows and breathtaking views of the Athabasca Glacier.

Moderate

Venture Beyond!

Travel to Sunwapta Falls to access the trailhead to Big Bend, an intermediate biking trail (12.6 km return, see on page 14) with gorgeous views.

Tip: Refer to pages 14 and 15 for viewpoints and areas to stop along the way to Athabasca and Sunwapta Falls.



Big Bend

Photo: R. Bray



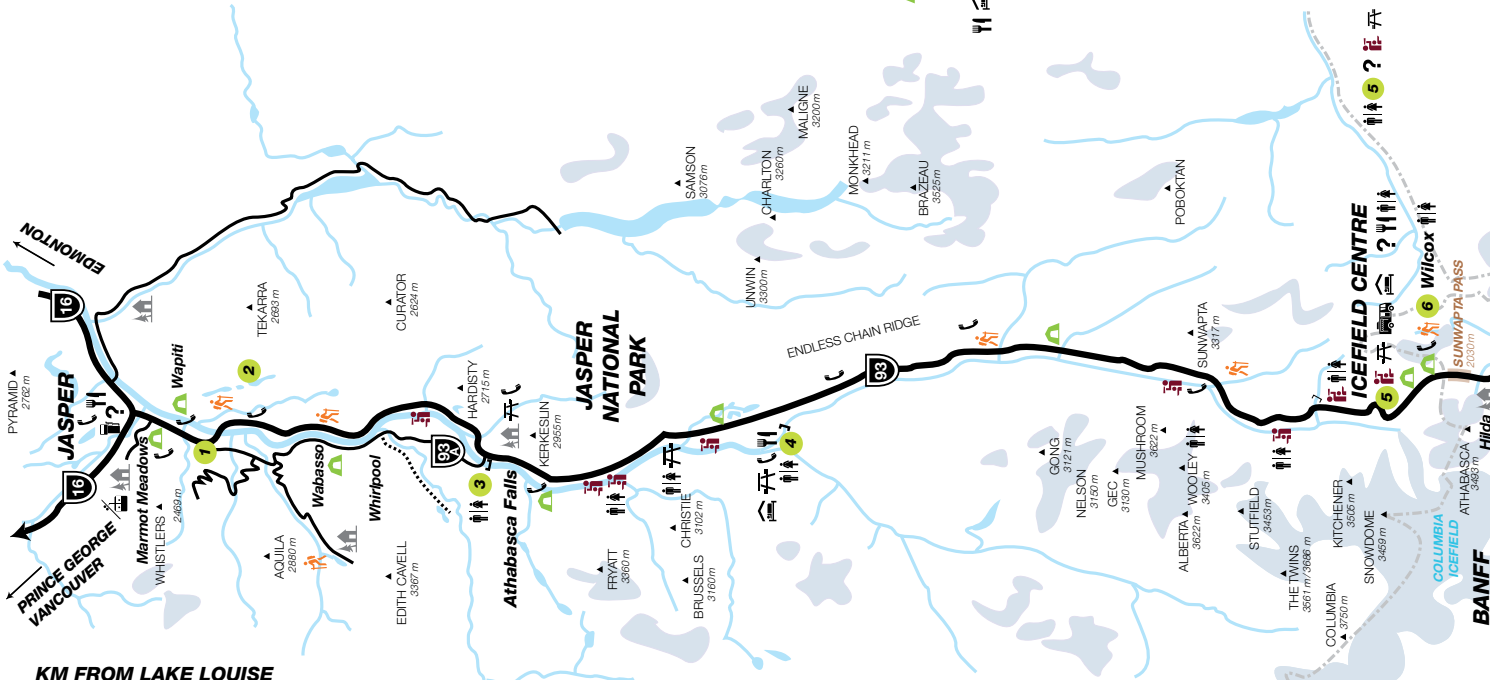
THE ICEFIELDS PARKWAY Driving Guide

KM FROM LAKE LOUISE

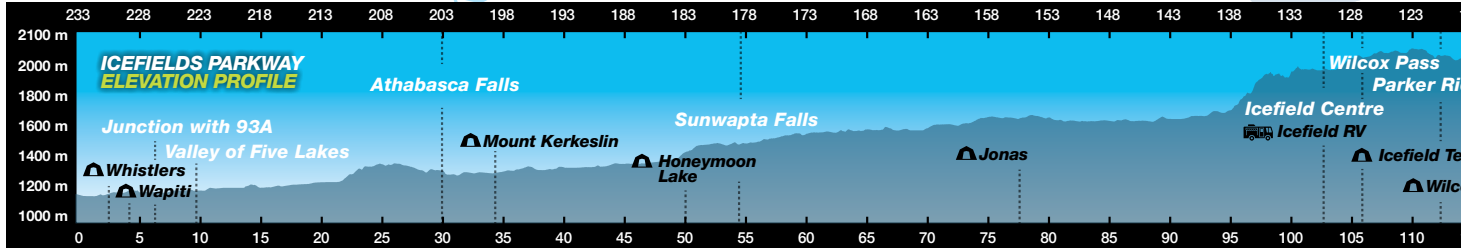
0	2	4	6	9	14	25	30	32	34	37	41	50	54	72	77	84	85	87	94	96	103	104
233	231	229	227	224	219	208	203	201	199	196	192	183	179	161	156	149	148	146	139	137	130	129

KM FROM JASPER

- JASPER TOWNSITE**
- Whistlers** (May to Oct.)
- Jasper International Hostel**
- Jasper Skytram** (April to Oct.)
- Wapiti** (Summer and Winter)
- Junction with Highway 93A**
Access to: Cavell Road **Wabasso**,
(mid-June to early Sept)
rejoins Parkway at Athabasca Falls
- Valley of the Five Lakes**
 Wabasso Lake
- Athabasca Pass Lookout
- Athabasca Falls**
Junction with Hwy 93A
- Athabasca Falls Hostel
- Kerkeslin** (mid-June to early Sept.)
 Goats and Glaciers
- Mount Christie
- Honeymoon Lake** (mid-June to early Sept.)
- Sunwapta Falls**
(mid-May to mid-Oct.)
 Poboktan Creek
- Jonas** (mid-May to early Sept.)
 Mushroom and Diadem Peaks
- Beauty Creek Hostel**
 Beauty Creek
- Stutfield Glacier
- Tangle Falls. **Watch for sheep!**
- ICEFIELD CENTRE** (mid-April to mid-Oct.)
Parks Canada information (May-Sept.)
 Icefield RV Glacier View Inn
- Icefield Tent** (mid-May to mid-Sept.)



KM FROM LAKE LOUISE



KM FROM JASPER



Athabasca Falls

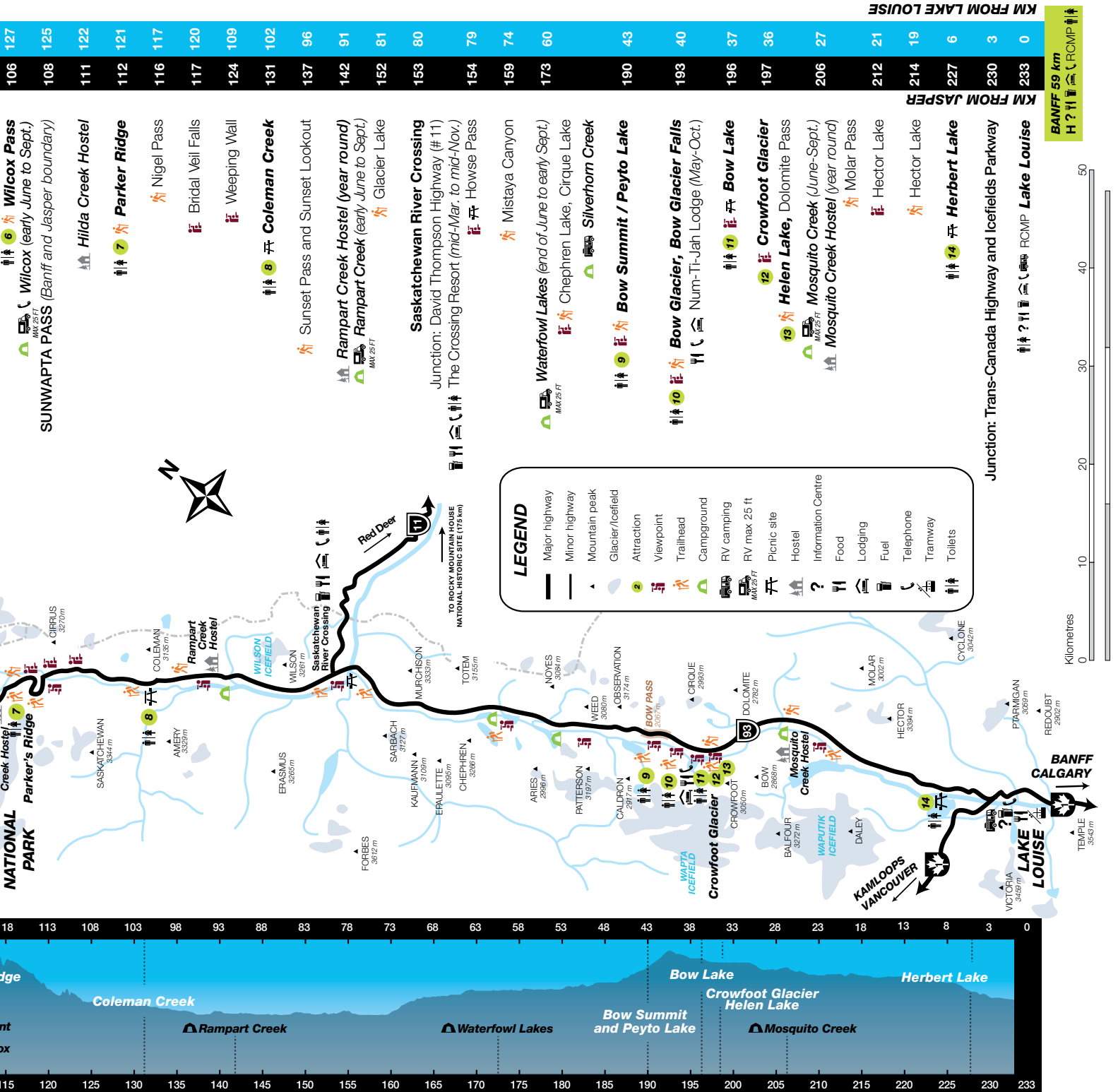


Wilcox Pass



Parker Ridge

Note: Watch for wildlife and drive with care.



LEGEND

- Major highway
- Minor highway
- Mountain peak
- Glacier/Icefield
- Attraction
- Viewpoint
- Trailhead
- Campground
- RV camping
- RV max 25 ft
- Picnic site
- Hostel
- Information Centre
- Food
- Lodging
- Fuel
- Telephone
- Tramway
- Toilets

KM FROM JASPER	Landmark / Feature	KM FROM LAKE LOUISE
127	Wilcox Pass (Banff and Jasper boundary)	0
125	Wilcox (early June to Sept.)	3
111	Hilda Creek Hostel	6
112	Parker Ridge	6
116	Nigel Pass	6
117	Bridal Veil Falls	6
124	Weeping Wall	6
131	Coleman Creek	6
137	Sunset Pass and Sunset Lookout	6
142	Rampart Creek Hostel (year round)	6
152	Rampart Creek (early June to Sept.)	6
153	Saskatchewan River Crossing	6
154	Howse Pass	6
159	Mistaya Canyon	6
173	Waterfowl Lakes (end of June to early Sept.)	6
190	Bow Summit / Peyto Lake	6
193	Bow Glacier, Bow Glacier Falls	6
196	Bow Lake	6
197	Crowfoot Glacier	6
206	Helen Lake, Dolomite Pass	6
212	Mosquito Creek (June-Sept.)	6
214	Mosquito Creek Hostel (year round)	6
227	Molar Pass	6
230	Hector Lake	6
233	Hector Lake	6
233	Herbert Lake	6

Icefields Parkway Checklist

- Athabasca Falls
- Goats and Glaciers Viewpoint
- Sunwapta Falls
- Tangle Falls
- Icefield Area
- Red Chairs at Wilcox
- Parker Ridge
- Bow Lake
- Peyto Lake

Campgrounds



Wabasso Campground

CAMPGROUND AND SERVICES	Full Hook-up	Electrical	Sani Dump	Flush Toilets	Pit Toilets	Showers	Firepit	Cooking Shelter	Drinking Water	oTENTik	Interpretive Programs	Disabled Access	OPEN DATES	FEES	# OF SITES
JASPER NATIONAL PARK															
Pocahontas	1												May 17 - Sept. 17	\$21.50	140
Snaring	2												May 17 - Sept. 24	\$15.70	66
Whistlers	3												May 3 - Oct. 9	\$27.40- \$38.20	781
Wapiti (summer)	4												May 3 - Oct. 9	\$27.40- \$32.30	364
Wapiti (winter)	4												Oct. 10 - May 1/18	\$27.40- \$32.30	93
Wabasso	5												May 17 - Sept. 17	\$21.50- \$27.40	231
Kerkeslin	6												June 21 - Sept. 4	\$15.70	42
Honeymoon Lake	7												May 17 - Sept. 17	\$15.70	35
Jonas	8												May 17 - Sept. 17	\$15.70	25
Icefield Centre (RV)	9												March 31 - Oct. 30	\$15.70	100
Icefield (tents only)	10												May 17 - Oct. 9	\$15.70	33
Wilcox	11												May 31 - Sept. 17	\$15.70	46

Book online or call ahead for info and reservations.

The mountain parks offer extraordinary camping experiences, ranging from full-service RV sites to rustic settings. All campgrounds highlighted in yellow can be reserved and most fill up quickly. Call ahead or go online for recommendations and availability of campsites.

1-877-RESERVE (737-3783) OR RESERVATION.PC.GC.CA

TIP: Campgrounds highlighted in yellow can be booked online.

CAMPGROUND AND SERVICES	Full Hook-up	Electrical	Sani Dump	Flush Toilets	Pit Toilets	Showers	Firepit	Cooking Shelter	Drinking Water	oTENTik	Interpretive Programs	Disabled Access	OPEN DATES	# OF SITES
BANFF NATIONAL PARK														
Rampart Creek					🚻		🔥	🏠	🚰				June 1 - Oct. 10	50
Waterfowl Lakes			🚰	🚰	🚻		🔥	🏠	🚰		🚰		June 24 - Sept. 5	116
Silverhorn					🚻		🔥						CLOSED IN 2017	
Mosquito Creek					🚻		🔥	🏠	🚰				June 1 - Oct. 10	32
Lake Louise Trailer			🚰	🚰		🚰	🔥		🚰		🚰	♿	Re-opening May 1 for year-round	189
Lake Louise Tent			🚰	🚰		🚰	🔥	🏠	🚰		🚰	♿	May 30 - Sept. 28	206
Protection Mountain				🚰			🔥	🏠	🚰			♿	CLOSED IN 2017	
Castle Mountain				🚰			🔥	🏠	🚰			♿	May 25 - Sept. 11	43
Johnston Canyon			🚰	🚰		🚰	🔥	🏠	🚰		🚰	♿	May 25 - Sept. 25	132
Two Jack Lakeside				🚰		🚰	🔥	🏠	🚰	🏠		♿	May 11 - Oct. 2	74
Two Jack Main			🚰	🚰			🔥	🏠	🚰				June 22 - Sept. 5	380
Tunnel Mt. Trailer	🚰		🚰	🚰		🚰			🚰		🚰	♿	May 11 - Oct. 2	321
Tunnel Mt. Village II		🚰	🚰	🚰		🚰		🏠	🚰	🏠	🚰	♿	Year-round	188
Tunnel Mt. Village I			🚰	🚰		🚰	🔥		🚰		🚰	♿	May 11 - Oct. 2	618
YOHO NATIONAL PARK														
Hoodoo Creek					🚻		🔥		🚰			♿	June 22 - Sept. 4	30
Takakkaw Falls (walk-in)					🚻		🔥	🏠	🚰				June 22 - Oct. 9	35
Kicking Horse			🚰	🚰		🚰	🔥	🏠	🚰		🚰	♿	May 18 - Oct. 9	88
Monarch			🚰		🚻			🏠	🚰			♿	May 4 - Sept. 4	44
KOOTENAY NATIONAL PARK														
Marble Canyon			🚰	🚰			🔥	🏠	🚰			♿	June 22 - Sept. 4	61
McLeod Meadows			🚰	🚰			🔥	🏠	🚰		🚰	♿	June 15 - Sept. 18	80
Redstreak	🚰	🚰	🚰	🚰		🚰	🔥	🏠	🚰	🏠	🚰	♿	May 4 - Oct. 9	232



Photo: P. Zizka

Camping



Maligne Lake

Backcountry Camping

With more than 1000 kilometres of trails and routes to choose from, backcountry camping is a fantastic way to experience the rugged and untamed wilderness of Jasper National Park. From easy one-night camping to 10-day adventures, the park offers something for everyone!

pc.gc.ca/jasperbackcountry

HIGHLIGHTS

- *Big Bend (bike or hike)*
13 km return
- *Hidden Cove (paddle-only)*
7 km return



Tonquin Valley

Venture Beyond!

Seeking scenery that is unrivalled? The Tonquin Valley is a very special place. A total of 43 km will take you from the Portal Creek trailhead to Astoria trailhead (or vice versa). With the construction occurring on the Edith Cavell Road this year, please refer to **page 11** for more details on access times.

Note: Make a reservation to stay overnight; your backcountry permit to the Tonquin Valley will provide you access up the Cavell Road.

Self-Registration Campgrounds

If you are looking for a campground that is a bit more rustic without the amenities of a full-service campground, Jasper National Park has several options. Our self-registration campgrounds are non-reservable and are booked on a first-come, first-serve basis. To increase your chance of securing a spot, arrive early in the day and come mid-week. Check-out time is 11:00 a.m. and payment is either cash or credit deposited at the site.

Jasper National Park self-registration campgrounds include:

- Snaring
- Kerkeslin
- Honeymoon
- Jonas Creek
- Icefields RV
- Icefields Tent
- Wilcox



Kerkeslin Campground

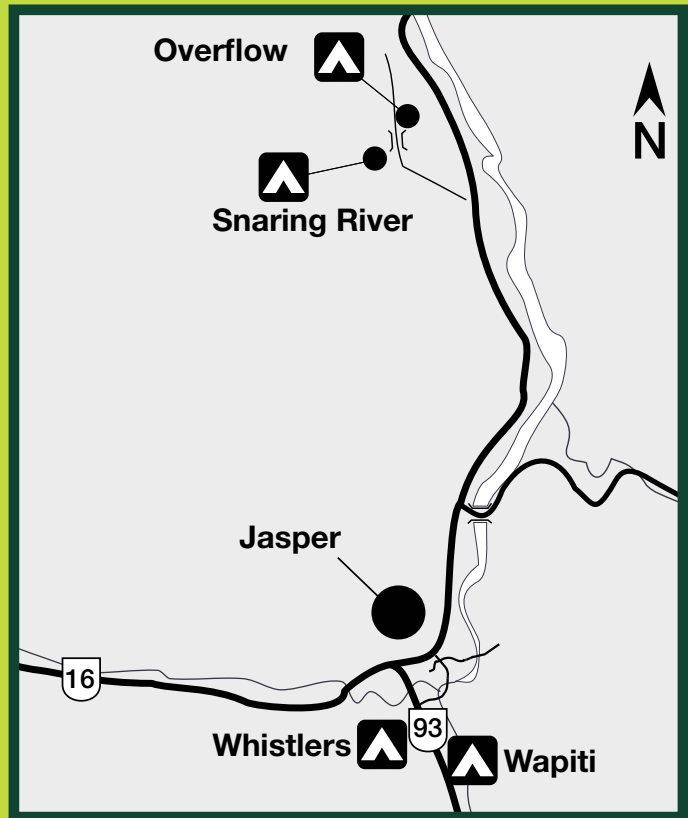
Overflow Camping

The summer months in Jasper National Park are very busy. If you are travelling to Jasper overnight and wish to camp in our main campgrounds, please make sure you have a reservation. If you find yourself in Jasper without a reservation and the campgrounds are full, try our overflow campground which is located 14 km east of Jasper on the Snaring Road.

Information on Overflow:

Accommodates up to 350 units including tents, RVs and trailers of all sizes

- Self-registration
- Cost is \$15.70 per night
- No services or designated sites
- Dry toilets and drinking water available
- No campfires allowed



Bare Campsite and Day-use Area Guidelines

You play a key role in keeping our wildlife safe while visiting Jasper National Park. Please remember to keep all unattended food, garbage, dishes/pots, coolers, bottles/cans stored in a hard-sided vehicle or in a bear storage locker. If an animal gets into human food they can lose their natural fear of humans, which can become a threat to visitors and the animals long term survival.

Note: Park staff will be roving around both campgrounds and day-use areas to support the 'Bare' Site Program.



Camping Regulations

Please help us make our campgrounds enjoyable places to stay by co-operating with the following regulations:

- Quiet, liquor and fire ban hours are from 11:00 p.m. to 7:00 a.m.
- One vehicle and one sleeping unit per site maximum.
- Generator hours are from 8:00 a.m. – 9:30 a.m. and 5:00 p.m. – 7:00 p.m.
- Pets must be on a leash and never left unattended.
- Keep all vehicles and camping equipment within the designated site.

Safety note: In the event of extreme winds, it is highly recommended that you move to an open area, away from the risk of falling trees.



Characteristics
Tan colour, tail has white underside and is held erect like a flag when alarmed.

Where to find
Mostly valley bottoms.

Whitetail Deer

14 cm



Female



Characteristics
White rump and light brown fur and horns. Males: thick curved horns. Females: short narrow horns.

Where to find
Near steep rocky terrain.

Bighorn Sheep

9 cm



Characteristics
Black tip on tail, large ears, white rump, grey colour.

Where to find
Mostly valley bottoms.

Mule Deer

9 cm



Characteristics
Narrow black horns, beard, long white hair.

Where to find
Near steep rocky terrain.

Mountain Goat

8 cm



Characteristics
Brown body, darker neck and large tan rump patch. Backwards slanting antlers.

Where to find
Valley bottoms and open areas. Commonly seen around townsites.

Elk

11.5 cm



Characteristics
Long legs, shoulder hump, built like a horse with a large head, shovel-like antlers.

Where to find
Wet and marshy areas.

Moose

13 cm

Size Chart



Moose

Elk

Caribou

Deer

Sheep

Goat

Wolf

Coyote

Wildlife Viewing Tips

Use binoculars and telephoto lenses.
Your best chance of observing wild animals is by quietly giving them space to feed, rest and keep their young safe.

Stay three bus lengths away.
Getting too close can be stressful for animals and dangerous for people. Even a gentle-looking elk can seriously hurt a person.

NEVER feed wildlife.



Photo: M. Bradley

Wolf



12 cm

Characteristics

Built like a large German Shepherd, with longer legs. Colour can vary from white to black.

Where to find

Mainly valley bottoms.



Photo: R. Grays

Coyote



7 cm

Characteristics

Medium-sized dog; thick, ushy tail, greyish-brown in colour.

Where to find

Valley bottoms, well adapted to humans.



Photo: M. Bradley

Caribou



10 cm

Characteristics

Darker body with light neck hair; C-shaped antlers with shovel-like tines at their base.

Where to find

Alpine and subalpine meadows. Threatened species.



Photo: M. Bradley

Red Squirrel

Characteristics

Red body, white underside and very large, bushy tail.

Where to find

Coniferous forests, scampering up trees.



Photo: M. Bradley

Columbian Ground Squirrel

Characteristics

Tan-coloured, longer body, has a high-pitched “squeak”.

Where to find

Meadows, roadsides and townsites in ground colonies.



Photo: R. Grays

Hoary Marmot

Characteristics

Large and silver-brown in colour with longer hair.

Where to find

Alpine and subalpine meadows, rock piles and scree slopes.

Grizzly or Black Bear?

BLACK BEAR



Photo: J. McCormick

NO SHOULDER HUMP

SMALL HEAD

TALL EARS

SHORT CLAWS

GRIZZLY BEAR



Photo: M. Bradley

DISTINCTIVE SHOULDER HUMP

LARGE HEAD

SHORT ROUNDED EARS

LONG CLAWS

You're in bear country!

- Be aware you are near a bear! Watch for fresh scat or large diggings.
- Make noise! Sing, yell or talk loudly.
- Keep your dog on a leash.

- Keep children nearby and in sight at all times.
- Never approach or feed a bear.
- Carry bear spray and know how to use it. Visit: pc.gc.ca/bears-and-people

Family and Friends of Jasper National Park



Fort St. James Trading Post

Fort St. James National Historic Site

This year marks the 100th anniversary of Parks Canada's national historic sites and of course Canada's 150th birthday. So what does that mean? A whole lot of celebrating is what that means!

Fort St. James, our 'sister' national historic site will be inviting visitors all summer long to take part in the festivities and enjoy complimentary entry. A restored Hudson's Bay Company post, this site is situated on the picturesque southern shores of Stuart Lake, British Columbia.

If your visit to Jasper National Park has you heading west along Highway 16 passing Prince George, BC, Fort St. James is a fantastic place to bring your family! Live and learn the life that was among the fur traders and Indigenous People who bartered here in 1896. Feed livestock grazing in a fenced pasture and watch a heritage chicken race on a custom-built track.

Looking for a place to rest your head? Sleep overnight at Murray House and explore 19th century history after hours by flashlight. Or new this year, bring your tent and camp out under the stars on the historic property.

Open June 1- Sept. 24, 2017 • 250-996-7191 • stjames@pc.gc.ca

pc.gc.ca/fortstjames



FortStJamesNHS

The Friends of Jasper National Park offer high quality experiences and unique opportunities to connect with the park during your visit. While you are here:

Participate: Learn more about the park through educational programs for all ages.

Volunteer: Get closer to nature on a local trail, on top of a mountain or at a community event.

Shop: Visit our gift shop, located in the Jasper Information Centre, to pick up your books, maps, bear spray and Canadian gifts. We are also your source for official Jasper National Park and Canada 150 souvenirs.

All proceeds support the park.

Donate: Leave a lasting legacy. 100% of your donation is used for programs and projects in Jasper National Park.



To learn more about your Friends, visit us online at friendsofjasper.com or stop by our gift shop, located in the Information Centre.

Mountain Safety

 Icefields Parkway

Unpredictable mountain weather can change road and trail conditions instantly and wildlife can be anywhere, any time. These simple precautions will help ensure you have a safe and enjoyable visit.

- Check road conditions prior to heading out: **call 511** or visit **alberta511.ca**.
- Obey speed limits and watch for wildlife on the roadside.
- Keep a 'bare' campsite. Visit **pc.gc.ca/bare-campsite**.
- Make noise on the trails to let wildlife know you are coming.
- Visit **pc.gc.ca/jasperbackcountry** to research and plan overnight trips, including potential trail restrictions, closures and avalanche conditions. Mandatory backcountry permits are available at **reservations.pc.gc.ca** or call **1-877-737-3783**.
- Let someone know your plans. Cell phones often do not work in the wilderness.

Park Regulations

Following park regulations while enjoying your national parks will help protect you, the land and our wildlife:

- **Keep pets on a leash and under control at all times.** Please pick up after your pet.
- **Take only photographs.** It is illegal to pick flowers, mushrooms, cut down trees, branches, remove cultural artifacts or otherwise cause damage to natural objects or living things.
- **Be considerate of your neighbours.** Liquor consumption is prohibited in public places, day-use areas and during set periods in campgrounds. Respect quiet hours and liquor bans in campgrounds.
- **Stay out of closed areas.** Area closures or activity restrictions are implemented when visitors are at risk or when wildlife requires additional protection. Signs indicate the impacted areas. Check **pc.gc.ca/jaspertrails** for up-to-date trail reports.
- **Be careful with fire.** Fires are permitted only in designated areas with fireboxes or firepits. Extinguish fires completely. Do not use deadwood, bark or branches for fuel. Report wildfires immediately by calling 911.
- **Buy fishing permits.** Anglers require a national park fishing permit, available at Parks Canada visitor centres and other vendors. Provincial licenses are not valid.
- **Going boating?** Check with Parks Canada Visitor Centre staff before you plan your trip. Gas motors are not allowed, electric motors are allowed on a few lakes.
- **Motorized off-road travel is not permitted.**
- **UAVs/drones are not permitted for personal use anywhere in the parks.**

Canada National Parks Act

Park wardens are responsible for enforcing park regulations. To report national park violations, call 24 hours a day, 7 days per week. Visit **pc.gc.ca/mtnregulations**, **1-877-852-3100** (Jasper and Mount Revelstoke and Glacier).

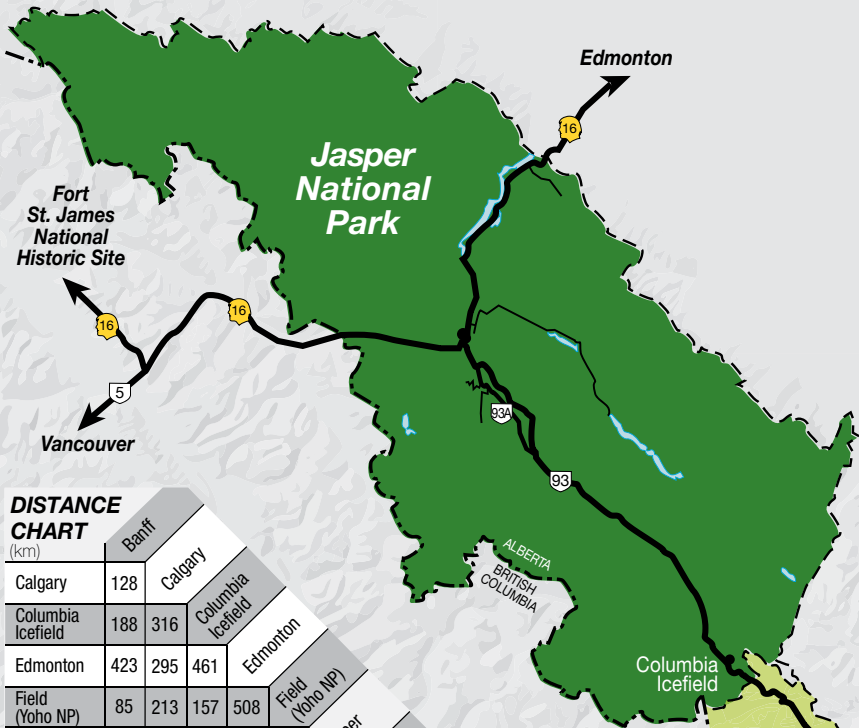
Violators will be charged, may be forced to appear in court and pay fines of up to \$25 000.



CANADA 150

Discover Parks Canada

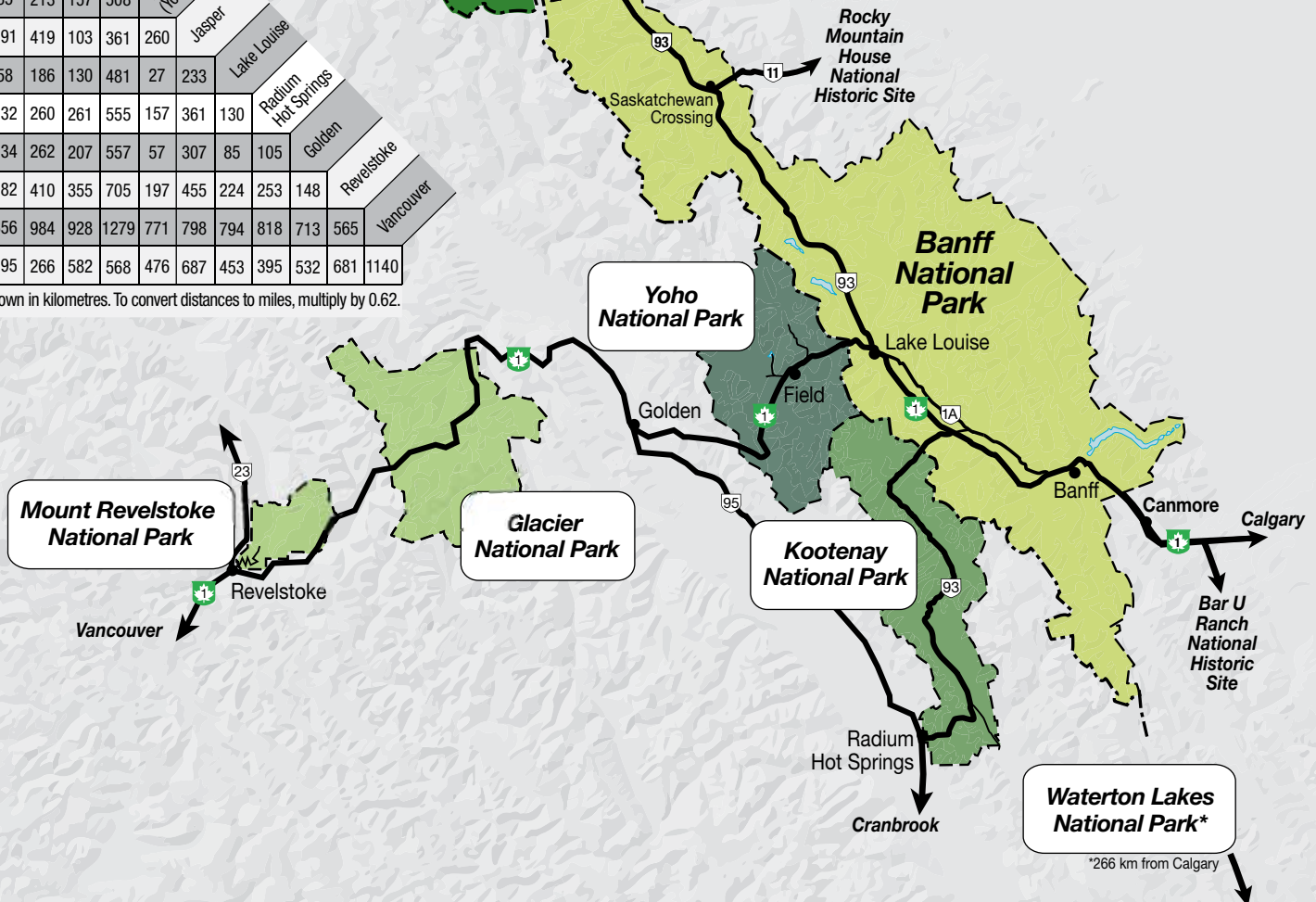
2017 marks the 150th anniversary of Canadian Confederation and we invite you to celebrate with Parks Canada! Take advantage of free admission to national parks, national historic sites and national marine conservation areas for the entire year.



DISTANCE CHART (km)

	Banff	Calgary	Columbia Icefield	Edmonton	Field (Yoho NP)	Jasper	Lake Louise	Radium Hot Springs	Golden	Revelstoke	Vancouver
Calgary	128										
Columbia Icefield	188	316									
Edmonton	423	295	461								
Field (Yoho NP)	85	213	157	508							
Jasper	291	419	103	361	260						
Lake Louise	58	186	130	481	27	233					
Radium Hot Springs	132	260	261	555	157	361	130				
Golden	134	262	207	557	57	307	85	105			
Revelstoke	282	410	355	705	197	455	224	253	148		
Vancouver	856	984	928	1279	771	798	794	818	713	565	
Waterton	395	266	582	568	476	687	453	395	532	681	1140

Distances are shown in kilometres. To convert distances to miles, multiply by 0.62.



Please slow down, for your safety and ours.



FOR EMERGENCIES DIAL 911
(Police, fire and ambulance)

Cell phone coverage is not reliable in all areas of the mountain parks.