



2015 - 2016

Getting Around Jasper National Park



Également offert en français

what's inside

- *Top 10 Things to Do*
- *Suggested Itineraries*
- *Maps*
- *Where to Camp*
- *Safety Information*



WELCOME TO JASPER NATIONAL PARK, THE GENTLE GIANT OF THE ROCKIES.

Jasper astonishes. It's the largest of the Rocky Mountain parks, yet easy trails, breathtaking drives and a laid-back mountain town tame its wild heart.

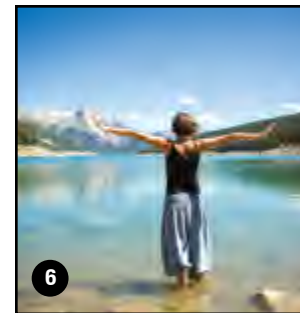
From Aborigines and early fur traders to railway workers laying ties for two transcontinental routes, millions have explored these valleys and mountain passes. Park establishment dates back to 1907 with the creation of the Jasper Park Forest Reserve. Today, 97 percent of the park's 11 000 square kilometres remain protected as wilderness.

Joining Banff, Yoho and Kootenay national parks and three adjacent provincial parks, Jasper is part of the magnificent Canadian Rocky Mountain Parks UNESCO World Heritage Site. Jasper is noted for vast wilderness and outstanding natural beauty in areas like Maligne Lake and the Columbia Icefield (along the Icefields Parkway).

Take a day or two, part of a day, or a lifetime to explore this park. (We're not joking about a lifetime—just ask some of the long-term locals who “came for a summer.”) Venture beyond the beaten path—there is always much more to see. For more information, drop by our Information Centre or visit pc.gc.ca.

Thank you for choosing to visit majestic Jasper National Park. We hope your visit to this special, protected park is relaxing, rejuvenating and inspiring.

Staff of Jasper National Park, Parks Canada



1 SIT BACK AND TAKE A SCENIC DRIVE.

Cruise along the stunning Maligne Road (48 km) or up Cavell Road (29 km) to see the Angel Glacier. Or drive up Pyramid Lake Road (7 km), passing Patricia Lake and stepping out to stroll the picturesque foot bridge to Pyramid Island.

2 ENJOY WILDERNESS AT YOUR DOORSTEP.

Conveniently, Jasper's Easy Trail System surrounds the town. A top pick: take the Red Squirrel Trail to Old Fort Point (2-3 hours), walking along the mighty Athabasca River. Find the red Adirondack chairs quietly tucked away at a particularly scenic spot.

3 VIEW ANCIENT GLACIERS ON THE EPIC ICEFIELDS PARKWAY.

Winding 232 glorious kilometers from Jasper to Lake Louise, the Icefields Parkway is dotted with ancient glaciers, waterfalls, picnic spots and hikes galore. Watch the award-winning film *Through Ice and Time* at the new Icefields Centre theatre.

4 GO OUT IN THE DARK.

A galaxy of stars by night, Jasper is the world's second largest Dark Sky Preserve. On any clear night, just look up and be awed. Prime night sky viewing spots include Pyramid Island and Old Fort Point. Listen for owls and frogs too!

5 SOAK IN MIETTE HOT SPRINGS, THE HOTTEST IN THE ROCKIES.

Relax in 40°C (104°F) mineral water and marvel at the views of Ashlar Ridge. There's a lot to explore around the area (see page 4). Café and pools open daily May 8 – Oct. 12. Swim suits and towels available for rent.

6 TAKE A DIP OR WADE IN A DISAPPEARING LAKE.

From paddling to swimming, Jasper's sparkling lakes entice. Top beaches include Lake Annette, Lake Edith and Pyramid Lake. Paddle world-famous Maligne Lake or wade along the shores of disappearing Medicine Lake!

7 EMBRACE THE ALPINE.

Jasper's vast alpine and windswept ridges are world-renowned. Nearly 1 000 km of hiking trails offer varying degrees of challenge, from simple half-day hikes to multi-day trips. Eighty backcountry campgrounds await.

8 PACK A PICNIC AND HIKE OR BIKE UP THE PYRAMID BENCH.

Town and valley vistas open up early on the many trails leading up to Pyramid Bench. Take a few hours or a full day to explore, on bike or on foot. Patricia and Pyramid lakes are ideal picnic stops.

9 WATCH WILDLIFE AND BE SAFE.

Jasper National Park is home to about 110 grizzly bears, 70 black bears, 60 wolves, 125 woodland caribou, 500 elk, 180 moose and 270 species of birds. Wow! See page 10 for tips on safe wildlife watching.

10 COME BACK FOR WINTER!

Under a blanket of snow and ice, Jasper's mountains and lakes transform. Come back and enjoy canyon ice walks, pond skating, cross-country skiing, snowboarding, downhill skiing, snowshoeing and the latest way to play in the snow—fat biking!



Bald Hills

TWO DAYS OF JASPER MOUNTAIN MAGIC

DAY 1

EXPLORE MALIGNE VALLEY

Make time for not-to-be missed stops along the Maligne Lake Road. Each corner of this 48-km road offers up new views of rivers and sharply peaked mountains. The road ends at Maligne Lake, where a whole new adventure begins.

PEER INTO MALIGNE CANYON.

In Summer, this spectacular limestone gorge is best viewed from the short hiking trail above. **11.5 km from Jasper**

STROLL THE SHORES OF MEDICINE LAKE.

Walk along the shore and learn more about this most peculiar, disappearing lake. **27 km from Jasper**

PICNIC ALONG THE WAY.

Stock up in town and enjoy wilderness dining at its best! There are several picnic areas en route.

MARVEL AT MALIGNE LAKE.

Walk along the lake shore or hike up into the Bald (10 km round trip) or Opal hills (8 km round trip). Paddle, fish or take the Maligne Lake cruise to capture one of the most iconic photos of Jasper at Spirit Island.

DAY 2

SOAK IN THE SCENERY ALONG MIETTE ROAD

Immerse yourself in the hottest hot springs in the Rockies after exploring and hiking the surrounding mountains. **The turn-off for Miette Road is just 30 minutes east of town.**

KEEP YOUR CAMERA HANDY. Wildlife may surprise you along the 17-km drive to the hot springs, or in the parking lot!

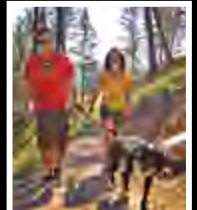
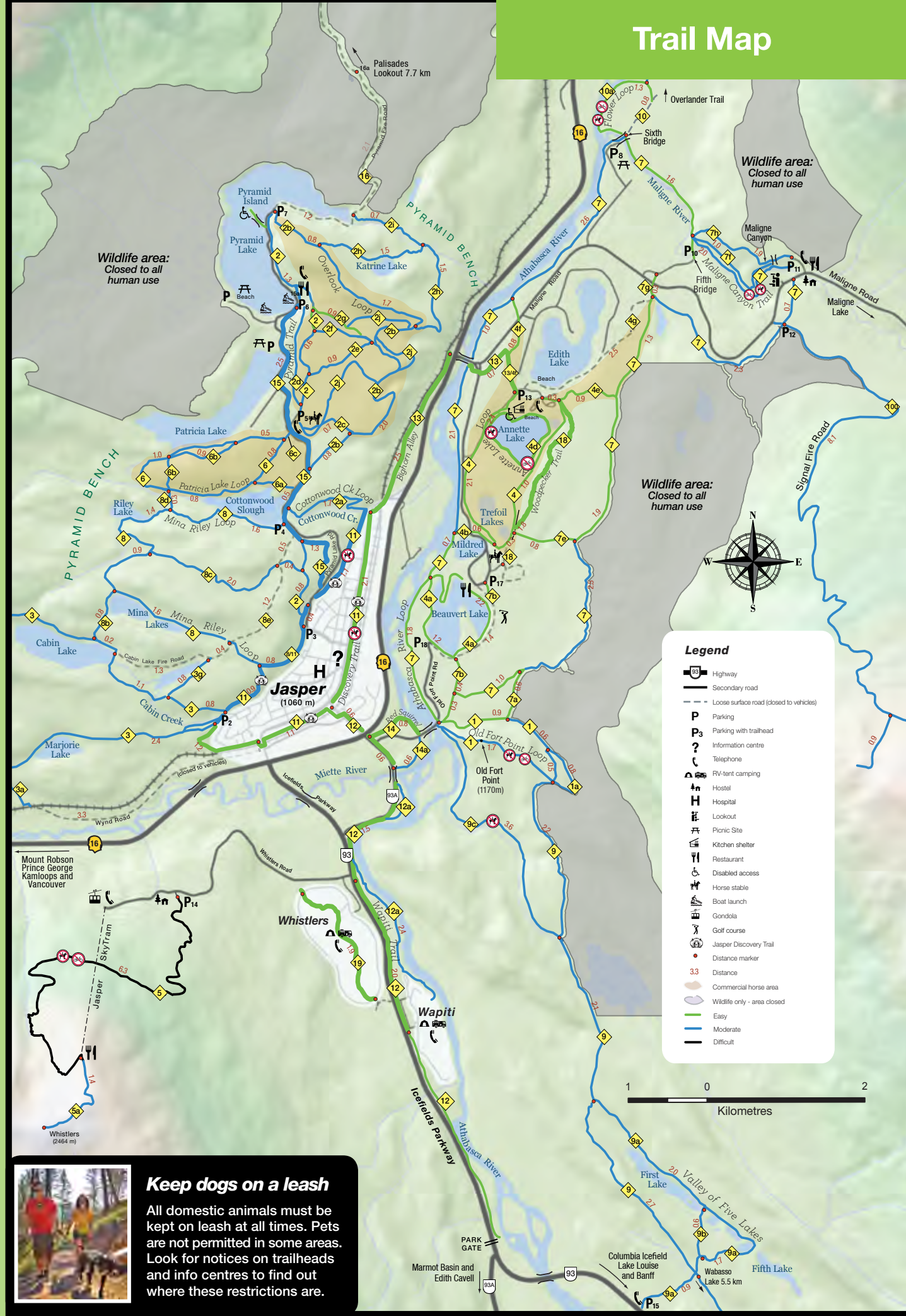
SEE A MASSIVE WALL OF LIMESTONE. Take in the scenery from Ashlar Ridge Viewpoint, just 8.5 km from the highway turn-off.

VISIT THE SOURCE OF THE HOT SPRINGS. Stroll the path to the ruins of the original pool and dip your hand in the source of the hot springs.

HIKE UP TO BREATHTAKING PANORAMAS. Do the moderately challenging Sulphur Skyline hike up to the alpine (8 km round trip). You will be rewarded with an incredible panoramic view of surrounding mountain peaks and valleys.

SOAK. Top off your day with a marvellous soak in Miette Hot Springs.

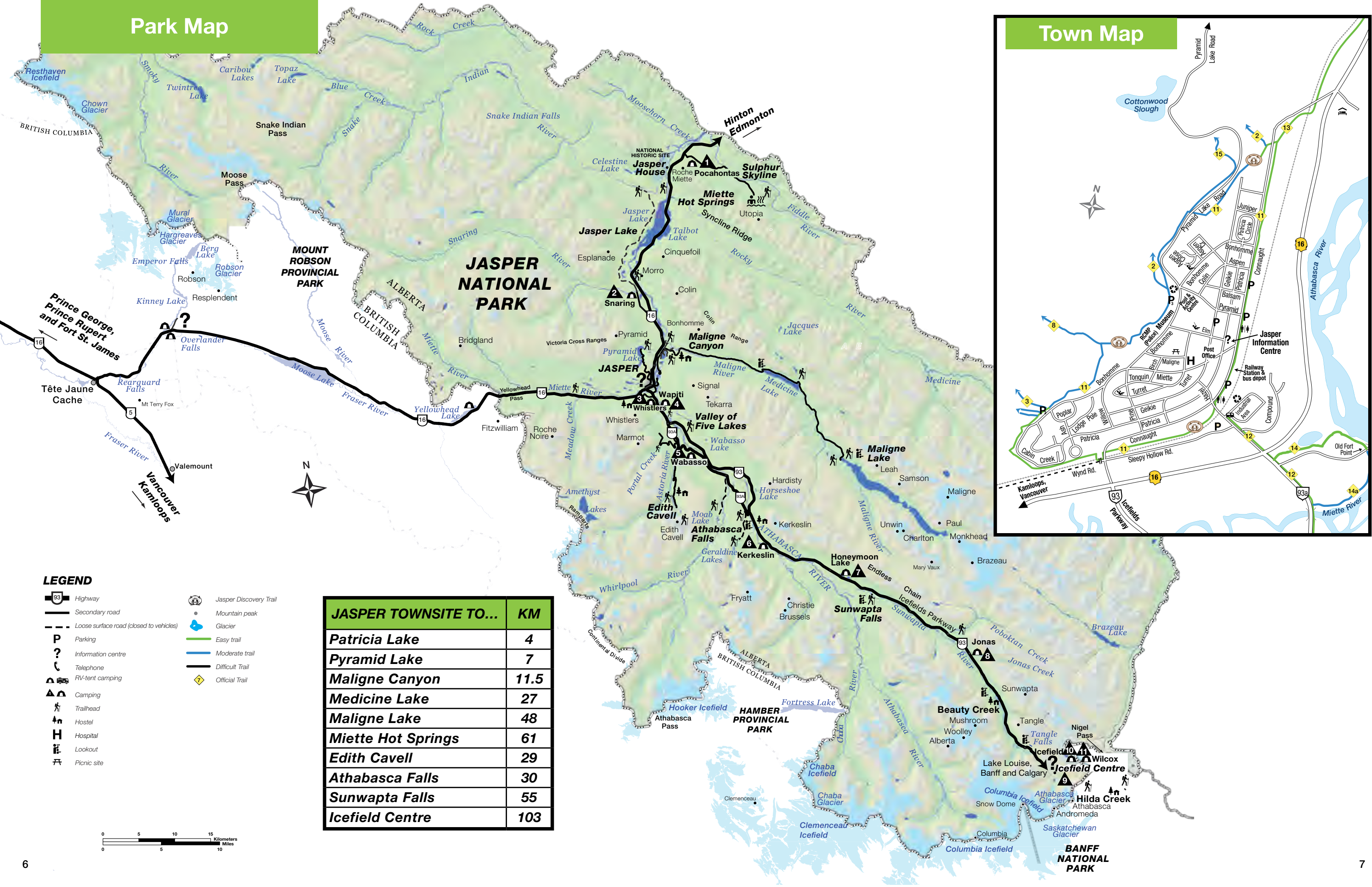
Trail Map



Keep dogs on a leash

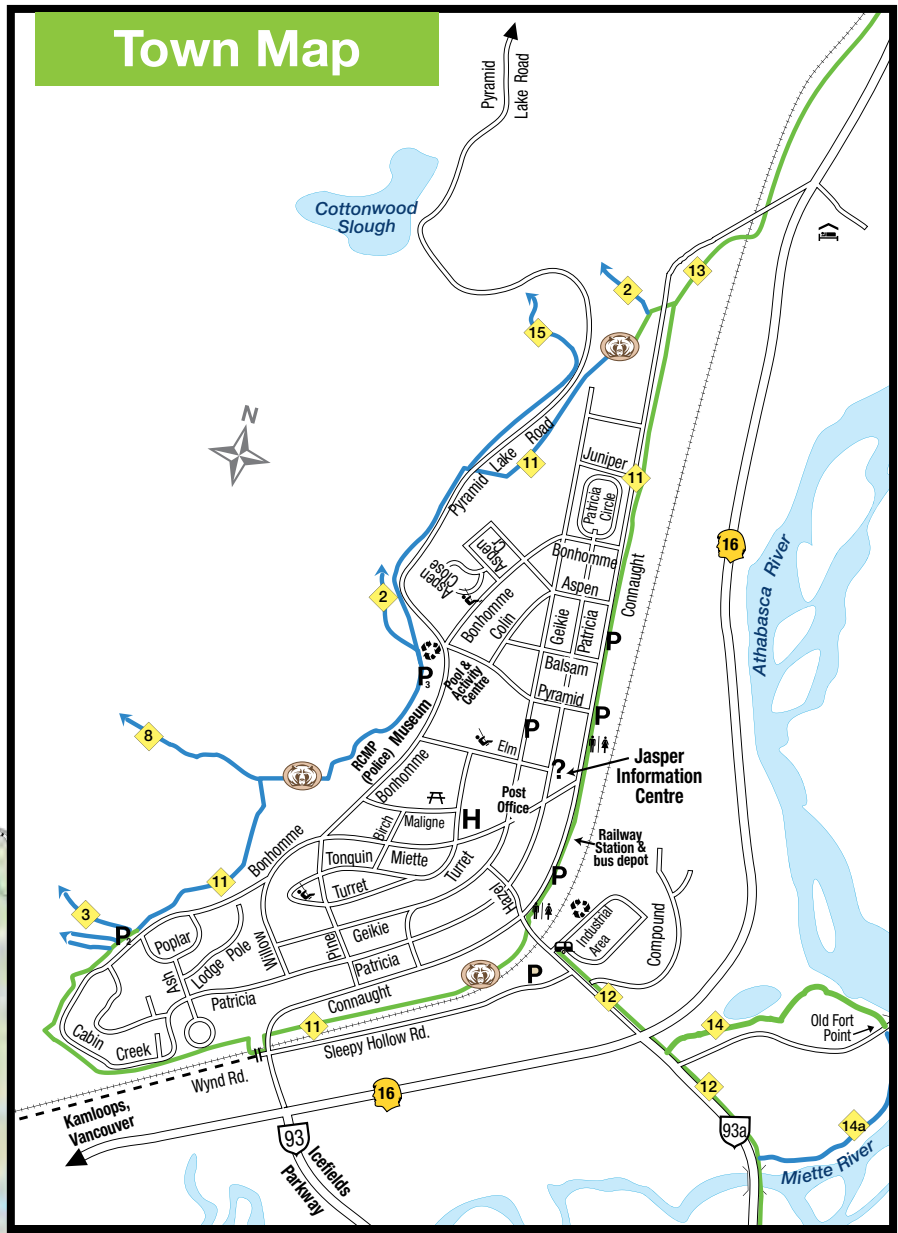
All domestic animals must be kept on leash at all times. Pets are not permitted in some areas. Look for notices on trailheads and info centres to find out where these restrictions are.

Park Map

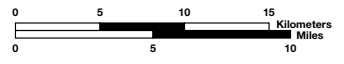


JASPER TOWNSITE TO...	KM
Patricia Lake	4
Pyramid Lake	7
Maligne Canyon	11.5
Medicine Lake	27
Maligne Lake	48
Miette Hot Springs	61
Edith Cavell	29
Athabasca Falls	30
Sunwapta Falls	55
Icefield Centre	103

Town Map



- LEGEND**
- Highway
 - Secondary road
 - Loose surface road (closed to vehicles)
 - Parking
 - Information centre
 - Telephone
 - RV-tent camping
 - Camping
 - Trailhead
 - Hostel
 - Hospital
 - Lookout
 - Picnic site
 - Jasper Discovery Trail
 - Mountain peak
 - Glacier
 - Easy trail
 - Moderate trail
 - Difficult Trail
 - Official Trail



JASPER WELCOMES EVERY CAMPING STYLE, FROM A ONE-PERSON BIVY TENT TO THE LARGEST MOTOR HOME. Looking for a forested family camping spot close to town? Want a rugged backcountry experience below glaciated peaks? Jasper offers 11 vehicle-accessible campgrounds and 80 backcountry campgrounds. Or try the signature **oTENTiks**—part tent, part cozy cabin—with comfortable bunks and mattresses, a wood floor, table and chairs, and your own front porch.

CAMPGROUND AND SERVICES	OPEN DATES	FEES
1 Pocahontas	MAY 15 – SEPT. 13	\$21.50
2 Snaring	MAY 15 – SEPT. 13	\$15.70
3 Whistlers*	MAY 1 – OCT. 12	\$27.40 – \$38.20
4 Wapiti (summer)	MAY 15 – MAY 18 JUNE 19 – SEPT. 20	\$27.40 – \$32.30
4 Wapiti (winter)	OCT. 12 – MAY 6/16	
5 Wabasso*	JUNE 19 – SEPT. 7	\$21.50 – \$27.40
6 Kerkeslin	JUNE 19 – SEPT. 7	\$15.70
7 Honeymoon Lake	JUNE 19 – SEPT. 7	
8 Jonas	MAY 15 – SEPT. 7	
9 Icefield Centre RV	APRIL 1 – OCT. 31	
10 Icefield (tents only)	MAY 15 – OCT. 12	
11 Wilcox*	JUNE 5 – SEPT. 27	
<p>Camping season dates are approximate. Please confirm at Information Centres prior to heading out. Arrive early. Daily fire permits cost \$8.80 extra. Non-reservable sites are available on a first-come, first-served basis. Camping permitted in designated campgrounds only. *Interpretive Programs offered. <input type="checkbox"/> Highlighted campsites may be reserved: 1-877-RESERVE (737-3783) OR reservation.pc.gc.ca</p>		

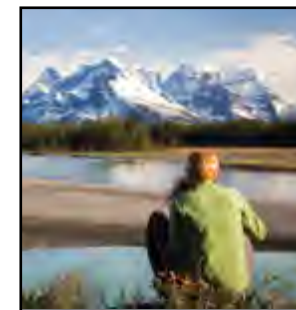
NEW! FAMILY CANOE CAMP AT HIDDEN COVE

Tucked away along the shores of the iconic Maligne Lake, Jasper’s newest campground will appeal to families looking for a gentle “backcountry” paddling adventure. The Family Canoe Camp at Hidden Cove was created with beginner canoeists and kayakers in mind. Aspiring paddlers follow a short, 4-km route along the shoreline, entirely in protected waters. With only four cozy tent pads and a covered cooking shelter, it’s perfect for family groups with children or seniors. **Reservations are accepted one month in advance – book early!**

PLANNING TO CAMP IN ANOTHER PARK? BOOK ONLINE OR CALL AHEAD FOR INFO AND RESERVATIONS.

The mountain parks offer extraordinary camping experiences, ranging from full-service RV sites to rustic settings. Many campsites can be reserved and most fill up quickly. Call ahead or go online for recommendations and availability of campsites.

1-877-RESERVE (737-3783) OR RESERVATION.PC.GC.CA



MOUNTAIN SAFETY

Unpredictable mountain weather can change road and trail conditions instantly and wildlife can be anywhere, any time. These simple precautions will help ensure you have a safe and enjoyable visit.

- Check road conditions prior to heading out: **call 511** or visit **alberta511.ca**.
- Obey speed limits and watch for wildlife on the roadside.
- Keep a ‘Bare’ campsite. Visit pc.gc.ca/bare-campsite.
- Make noise on the trails to let wildlife know you are coming.
- Visit pc.gc.ca/jasperbackcountry to research and plan overnight trips, including potential trail restrictions and closures, avalanche conditions and mandatory backcountry permits.
- Let someone know your plans. Cell phones often do not work in the wilderness.

PARK REGULATIONS

Following park regulations while enjoying your national parks will help protect you, the land and our wildlife:

- **Keep pets on a leash and under control at all times.** Please collect and properly discard feces left behind by your pet.
- **Take only photographs.** It is illegal to pick flowers, mushrooms, cut down trees, branches, remove cultural artifacts or otherwise cause damage to natural objects or living things.
- **Be considerate of your neighbours.** Liquor consumption is prohibited in public places, day-use areas and during set periods in campgrounds. Respect quiet hours and liquor bans in campgrounds.
- **Stay out of closed areas.** Area closures or activity restrictions are implemented when visitors are at risk or when wildlife requires additional protection. Signs indicate the areas impacted. Check pc.gc.ca/jaspertrails for up-to-date trail reports.
- **Be careful with fire.** Fires are permitted only in designated areas with fireboxes or firepits. Extinguish fires completely. Do not use deadwood, bark or branches for fuel. Report wildfires immediately.
- **Buy fishing permits.** Anglers require a national park fishing permit, available at Parks Canada visitor centres. Provincial licenses are not valid.
- **Going boating?** Check with Parks Canada Visitor Centre staff before you plan your trip. Gas motors are not allowed, electric motors are allowed on a few lakes.
- **Motorized off-road travel is not permitted.**

CANADA NATIONAL PARKS ACT

Park wardens are responsible for enforcing park regulations. To report national park violations, call: 24 hours, 7 days per week. Visit pc.gc.ca/mtnregulations.

1-888-927-3367 (Banff, Yoho, Kootenay and Waterton Lakes)
1-877-852-3100 (Jasper and Mount Revelstoke and Glacier)

Violators will be charged, may be forced to appear in court and pay fines of up to \$25 000.



Interpretive programs



Safe wildlife viewing



Learning about wildlife

DISCOVER JASPER'S STORIES

Parks Canada interpreters are storytellers and guides who want to share their knowledge and love of Jasper National Park. From campfires and outdoor theatres to roadside pull-outs, look for our friendly staff and their stashes of cool things (animal hides, skulls, horns and antlers)!

FAMILY FOCUS

All interpretive programs are family friendly, but some are especially made for parents and kids to enjoy together. At the Heritage Firehall in town on Patricia Street, across from the Information Centre, join us in making cultural crafts, music or discoveries about nature. **Fees apply for some programs.**

Check out the schedule of activities at pc.gc.ca/jasper-interpretation or pick up a brochure at park facilities.

WILDLIFE VIEWING TIPS

Your best chance of observing wild animals is by giving them space to feed, rest and keep their young safe.

- Stay three bus lengths (30 m) away from most animals and ten bus lengths (100 m) from bears. Getting too close can be stressful for animals and dangerous for people.
- Keep children nearby and in sight at all times.
- **NEVER feed wildlife.**
- Keep your pet on leash at all times.
- You are in bear country! Watch for fresh scat or large diggings. Sing, yell or talk loudly as you hike.
- Carry bear spray and know how to use it. Visit: pc.gc.ca/bears-and-people or ask for the **Keep the Wild in Wildlife** brochure.

REMEMBERING CANADA'S HISTORY



Historic Jasper House

ON THE ROAD TO 2017

Canada turns 150 in 2017! On the road to this momentous celebration, Parks Canada's treasured natural and historic places will host special programs and events to commemorate the milestones that contributed to the Canada of today, strong and free. Experience what inspired Canada! pc.gc.ca



SPOTLIGHT ON PARKA

Parka, Parks Canada's mascot, will soon be a TV star! Check out Parka on Chirp TV airing on the CBC Kids network and on Radio-Canada in French in the fall 2015.

WANT MORE INFORMATION ABOUT JASPER NATIONAL PARK?

Visit facebook.com/JasperNP or twitter.com/JasperNP

These and more detailed brochures are available online, or for pick-up at a Parks Canada Visitor Centre.

DOWNLOAD OR PICK UP THESE HELPFUL BROCHURES:



These brochures are also available online: pc.gc.ca/jasper

WANT MORE INFORMATION ABOUT OTHER MOUNTAIN NATIONAL PARKS?

BANFF

Banff Visitor Centre: 403-762-1550
Lake Louise Visitor Centre: 403-522-3833
pc.gc.ca/banff

Banff Lake Louise Tourism: 403-762-8421
banfflakelouise.com

JASPER

Jasper Information Centre: 780-852-6176
pc.gc.ca/jasper

Tourism Jasper: 780-852-6236
jasper.travel

KOOTENAY

Kootenay Visitor Centre: 250-347-9505
pc.gc.ca/kootenay

Tourism Radium/Radium Chamber of Commerce: 1-888-347-9331
radiumhotsprings.com

© Her Majesty the Queen in Right of Canada
Catalogue No: R64-439/2015E
ISBN: 978-1-100-25602-3

YOHO

Yoho Visitor Centre: 250-343-6783
pc.gc.ca/yoho

Accommodations and attractions in Field
field.ca
Tourism Golden: 1-800-622-4653
tourismgolden.com

MOUNT REVELSTOKE AND GLACIER

Rogers Pass Discovery Centre: 250-837-7500
pc.gc.ca/glacier • pc.gc.ca/revelstoke

Tourism Revelstoke: 1-800-487-1493
seerevelstoke.com

WATERTON LAKES

Waterton Lakes Visitor Centre: 403-859-5133
pc.gc.ca/waterton

Waterton Chamber of Commerce
mywaterton.ca

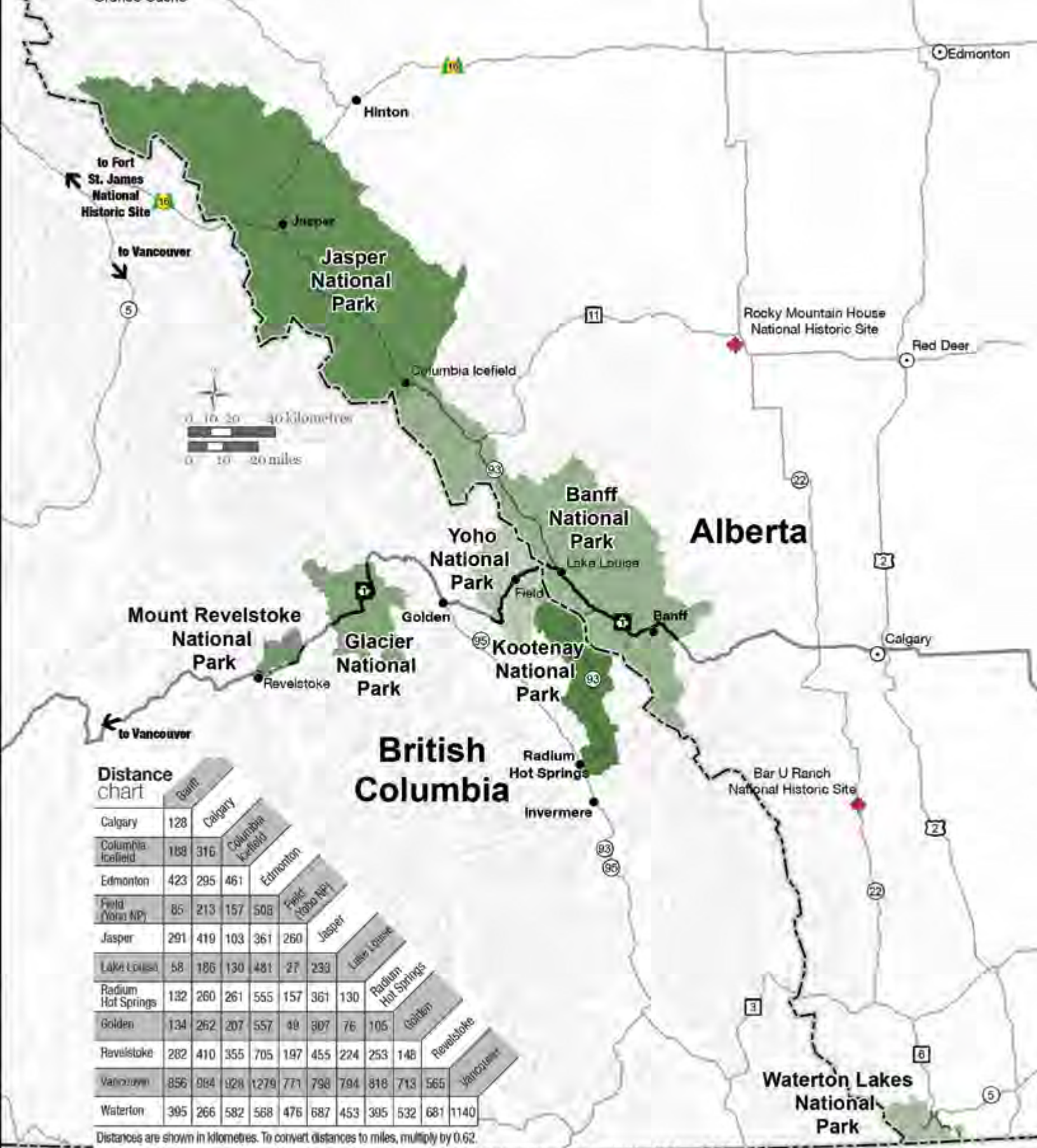
Mountain Learning

At Whistlers Campground explore the playground path, or take in one of the Xplorer Programs in the early evening.

Kids age 6-11,

ask for your copy of the **Xplorer kids activity booklet**. They're filled with fun activities for you to do while visiting.





Please slow down, for your safety and ours.



FOR EMERGENCIES DIAL 911 (Police, Fire and Ambulance)

Cell phone coverage is not reliable in all areas of the mountain parks.