

JASPER

NATIONAL PARK *in the Canadian Rockies*

CANADIAN NATIONAL RAILWAYS



THERE'S SOMETHING ABOUT MOUNTAINS!

It's a tonic for body and soul merely to be among them. You are carried along on the rhythm of their rolling slopes, lifted up with their soaring summits; the snow and ice and the shining lakes are eternally refreshing; the rivers and the cataracts driving impetuously to the sea quicken your pulse; and the air is like wine.

You may be stimulated to do the great things the poet William Blake says are done when men and mountains meet — to climb the highest peaks, to ride horseback or hike for miles, to get a better golf score, a bigger fish, photographs you never dreamed of taking. Free of the humdrum workaday world, here's a new lease on life for you.

But you don't have to do anything about the mountains to be invigorated and restored. You can just sit and let them do it.

Whatever your mood is, Jasper meets it.

In this booklet we can give you only a few of the highlights of this great playground in the northern Canadian Rockies. Your Canadian National agent will tell you more.

Great things were done when men met these mountains and planned Jasper Park Lodge where people have been coming for rest and recreation for more than thirty years.

The Lodge is not an hotel in the ordinary sense of the word. There is nothing ordinary about Jasper. Instead of one building, it is a village, a self-contained community built on the landscaped shore of an entrancing mountain lake, three miles

from the railway station. The ordinary things you expect of a modern hotel are here, but they are

tuned up to the holiday mood. Every detail of

the Lodge's complex but smooth-running

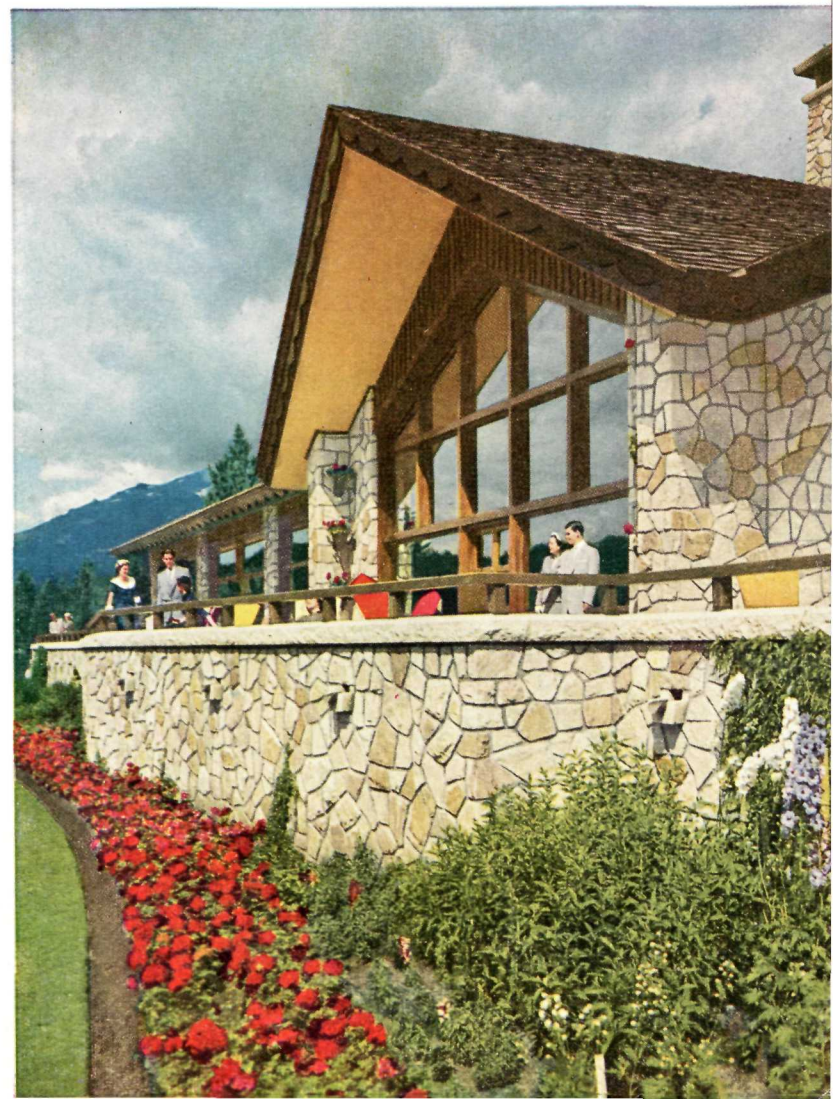
organization, from the unseen sources of power to the

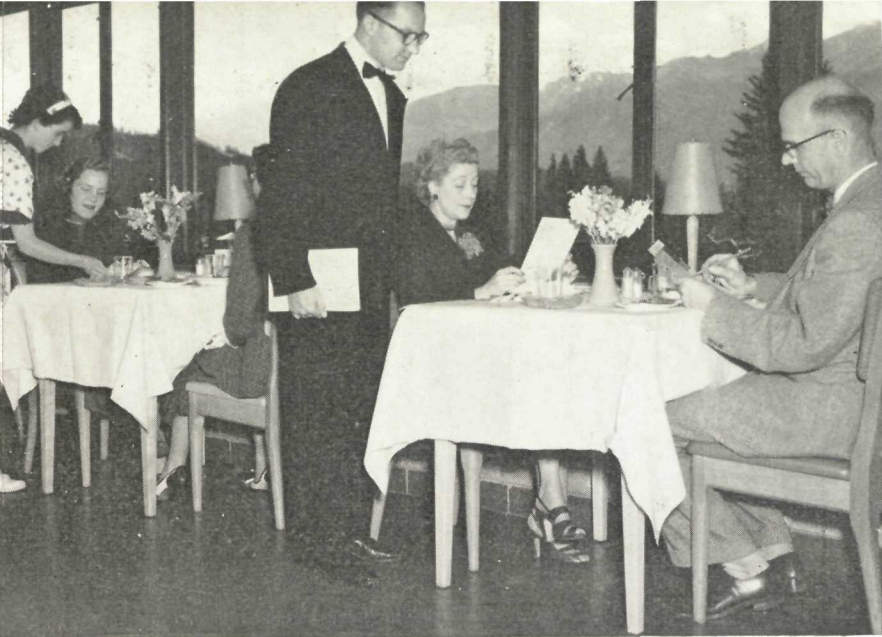
flowers on the dining room tables, is geared

for the comfort and pleasure of honored guests.



One of the gables of the Lodge.





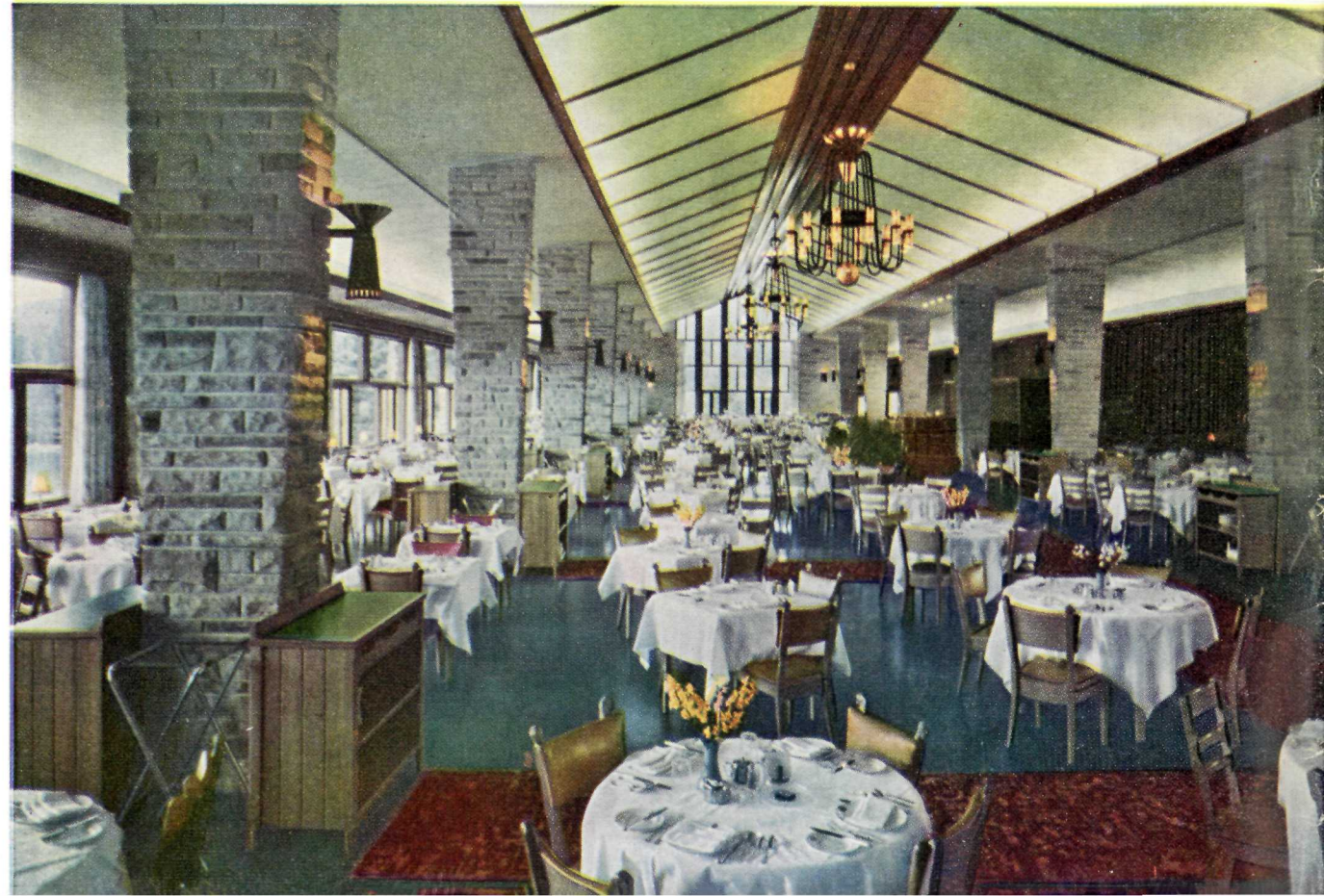
PLANNED FOR PLEASURE...

All things work for your pleasure in Jasper Park Lodge. On this page we show you a view of the main dining room. The wide windows running its full length overlook the lake, revealing an enchanting panorama of mountains, water and sky; Mount Edith Cavell, girded and crowned with ice, mirrored in the lake; the pointed green spruce marching up the lesser slopes, the gilded clouds changing shape before your eyes. The furniture, the rugs and drapes, like the gracefully soaring stone pillars, keep the mountains in mind. And for mountain appetites and delicate palates, the great kitchens provide superb food, expertly prepared, daintily served by charming young ladies.

Wide windows frame enchanting pictures of lake and mountains.



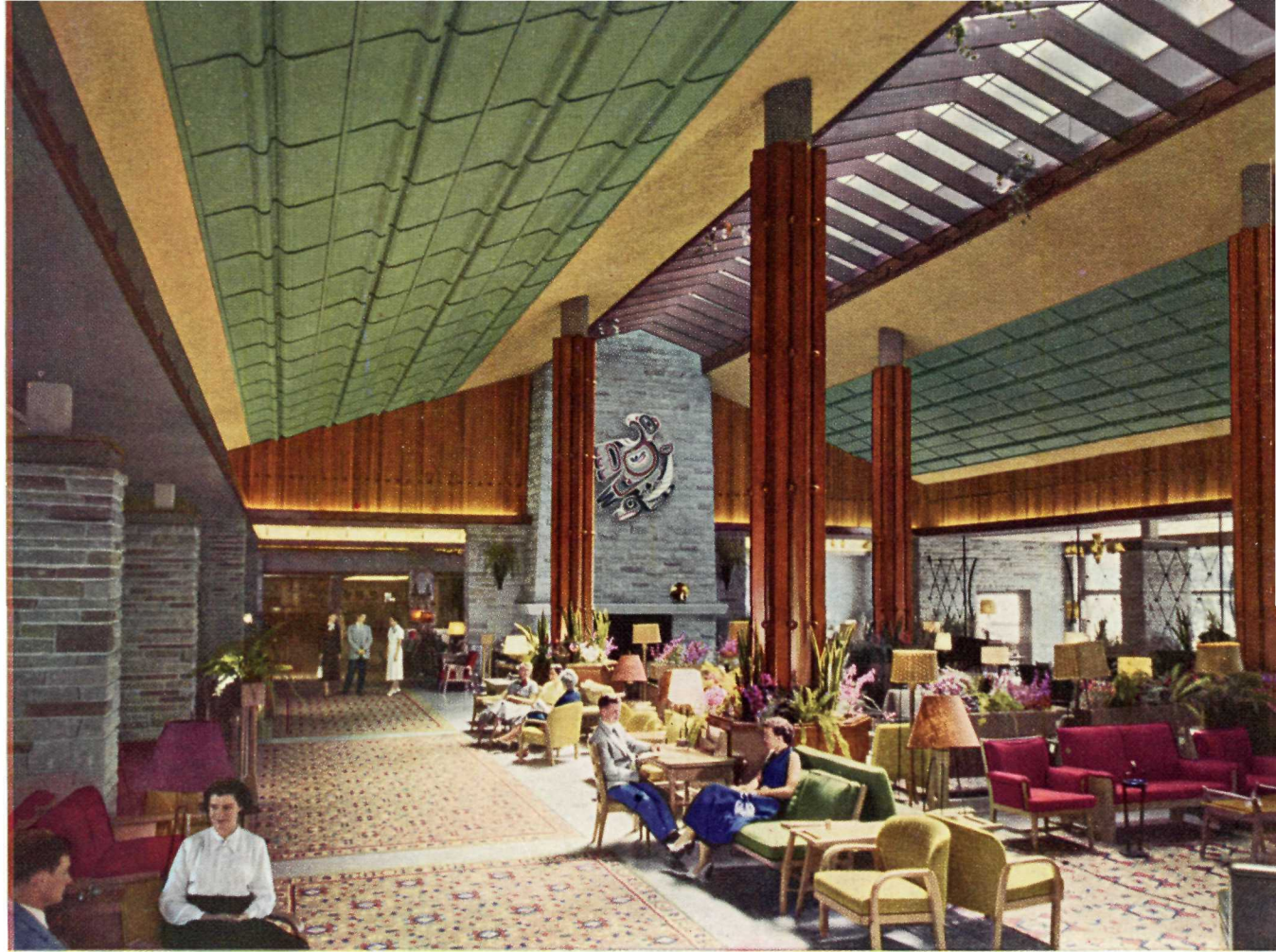
More than 500 guests may be served at one sitting in the large yet gracious dining room.



A view of the lounge showing the unusual architectural treatment of the ceiling.

The heart of the Lodge is the new Central Building, acclaimed by travellers as a marvel of 20th Century resort architecture. Its structure, over a frame of steel and concrete, is native fieldstone and cedar, in keeping with the mountains to which it belongs and with the log bungalows gathered around it between the lake and the golf course. It provides shelter, and even carpeted luxury, but the great outdoors—its reason for being—is not shut out.

Wide windows and a long skylight keep the way open and in the centre a space has been left unroofed to admit the full unfiltered sun. This is the patio, and in the middle of it, surrounded by a pavement of slate, a clear pool reflects the sky.



The fieldstone of the exterior walls pushes through to bring the outdoors into the building in piers and partitions and the immense double fireplace that is the focal point of the lounge is built of stone. The lounge, under a ceiling sloping away in both directions from the skylight apex, is spacious but the guests don't feel exposed and minimized. The furniture, made for relaxation, is grouped in blocks of color in such a way as to give the impression of smaller, separate clubrooms, comfortable for conversation or a game of cards, for reading or writing letters.

RECREATION INDOORS...

The ballroom, reached through the lounge, is designed for meetings and movies as well as dancing and, by the use of a folding partition, it may be extended for large conventions. Doors open on the patio, which leads to the snack bar, also accessible from outside the building. The self-contained tavern has its own entrance on the lakefront.

In the business wing are housed the registration desk and the hotel offices, the railway and telegraph offices, the news stand and the specialty shops. The post office, a branch bank, the beauty parlor and the barber shop are on the lower level.

Here, too, is the recreation room, equipped with facilities for all sorts of indoor games. Its floor is plastic tile in cheerful colors.

The vast and spotless kitchens occupy their own wing. Here nearly 4,000 meals are prepared every day.



The games room is bright and well equipped.



The ballroom, cleared for after-dinner dance.

Guest cabins in their handsome setting.

A HOME OF YOUR OWN...

There are no guest rooms in the Central Building. You stay in a log cabin on one of the streets that curve around the bay. Every street is paved and every house has its garden. It would be true to say, indeed, that the residential section of the Lodge is one continuous garden. The cedar, spruce and pine of the mountains have been left, or transplanted, immaculately groomed lawns have been laid down and flower beds that are the pride of the gardener and the delight, not only of the guests, but of the deer, who have dainty appetites and who feel that they have a perfect right to munch the flowers, since they, after all, are the original inhabitants.

The cabins come in various sizes, some with as many as 16 single rooms, some with only four. You may have half a cabin, for example, with two rooms and connecting bathroom, your own



private entrance and verandah sitting room, or you may have a whole house to yourself.

The buildings are constructed of peeled logs. They are soundly built, weather-proof and equipped with all the refinements fastidious guests expect—steam heating for the cool mountain nights, hot water, electricity, telephones. The beds are comfortable and the furnishings—drapes, counterpanes, rugs, lamps, dressing tables, desks and so on—are fresh and modern.



One of the deluxe bungalows.



*Canoeing on Beauvert, the "Beautiful Green Lake,"
Mount Edith Cavell in the background.*

The Lodge's open-air swimming pool is heated.



FUN FOR EVERYONE...

Jasper is designed for guests of all ages, from the youngsters who like the strenuous life to the oldsters, who are satisfied to sit. There is plenty to do and plenty to look at. Some people like to see the mountains from a pony's back, some from a car; and some come to fish and some live at the golf course; some take the mountains the hard way, climbing from an alpinist's camp or on their own, for the pleasure of looking down, while others are convinced that the peaks look better from the bottom. There is tennis on four hard-surfaced courts, canoeing on the lake, swimming in the heated pool.

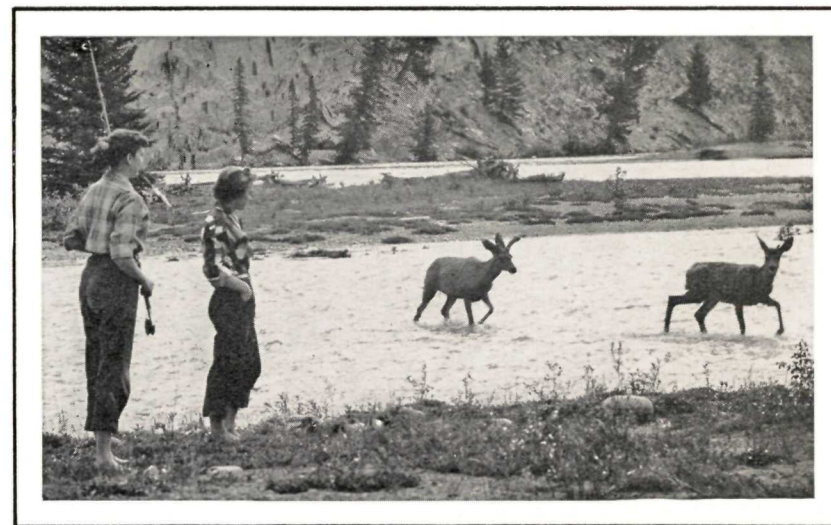
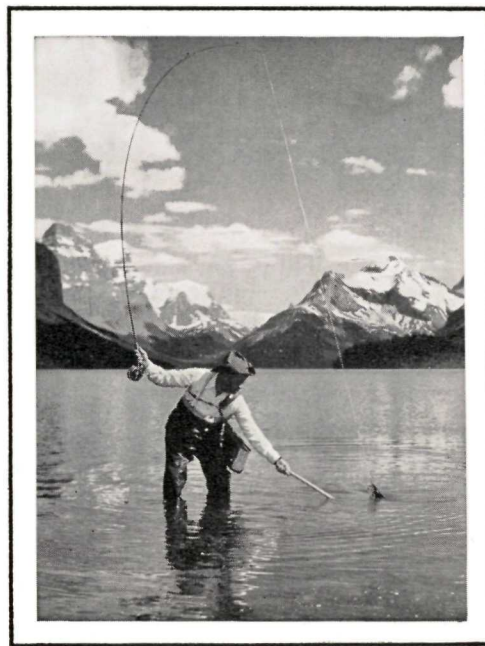
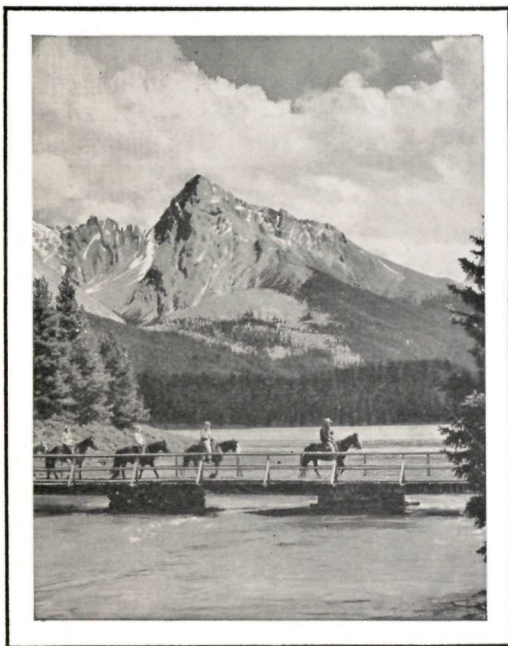
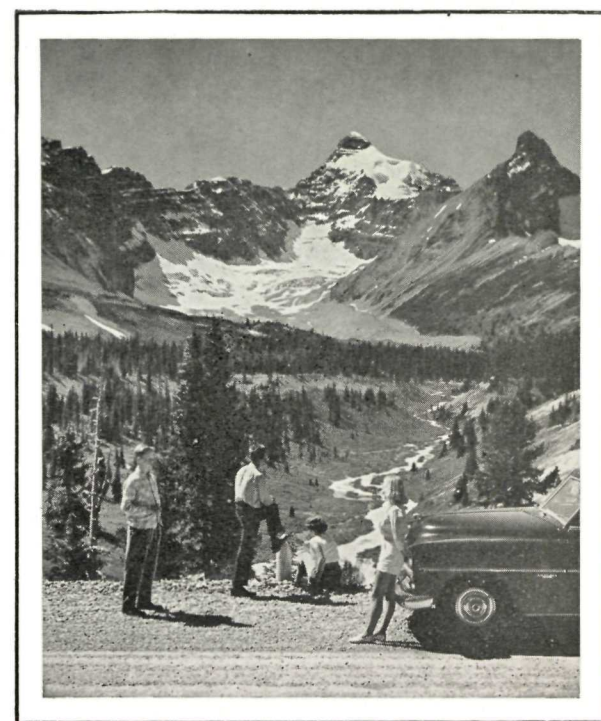




DIVIDENDS IN DECEMBER...

To eat your cake and have it is one of mankind's most frustrating problems. The camera helps solve it. Bring your camera to Jasper—movie or still, precious lens with all the gadgets, or simple box—black and white or color—stop the joyous moment in its tracks, take it home with you, and keep it forever!

The green slopes, the rugged rock, the play of light and shadow as the clouds boil up over the ridges and sail across the sky, the glint of ice and the glimmer of new-fallen snow, the color of the lakes, the clear reflections, the animals—the timid but trusting deer and the clownish bears that come calling at the Lodge, and the wilder denizens—the wading moose and the dainty stepping sheep and goats... you and your friends enjoying the mountains... keep them all! You can have the summer all over again, your vacation will pay dividends in the winter months, if you bring your camera.



CHAMPIONSHIP COURSE...

The golf course at Jasper Park Lodge hewn out of the mountains and brought to perfection by the grooming of a quarter of a century, is rightly known as one of the great courses of the world.

It is a championship course—6,700 yards, par 71—and Golf Week, culminating in the Totem Pole Tournament, attracts high calibre players, both men and women, every year. But whatever your handicap, there's top fun on this course.

The hazards include the beautiful mountain terrain, which makes it hard to keep your eye on the ball, and sometimes a bear unconcernedly ambling over the fairway, but they do not include strenuous climbs.

The course is laid out on the British principle, with the ninth hole farthest away from the clubhouse, but an additional three holes permit a nine-hole game, taking you back to the clubhouse with no cutting in.



Pyramid Mountain is an impressive background to this green.



The lake in front of the Lodge provides some of the water hazards.

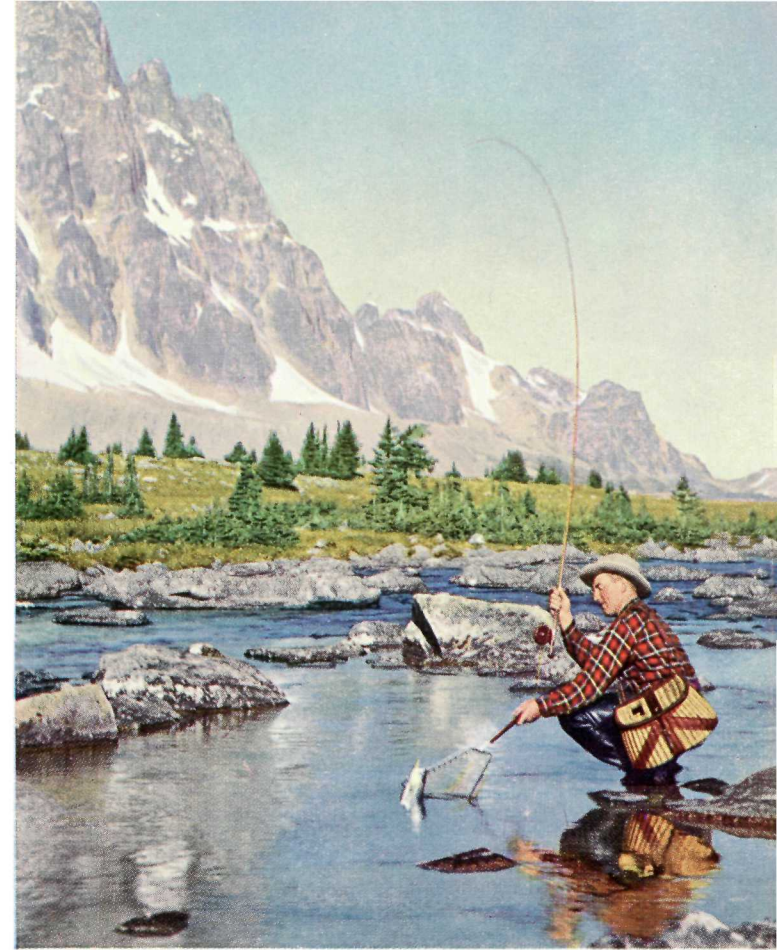
FUN FOR FISHERMEN...

A few miles from the Lodge, on the lower Maligne River, the Government Fish Hatchery breeds the trout with which the mountain waters are stocked.

Maligne Lake and River, Amethyst Lakes and the Astoria in the Tonquin Valley, Jacques Lake, Medicine, Beaver, Wabasso and other lakes and brooks—there's hardly a stretch of water anywhere in Jasper that won't prove rewarding to a well-cast fly. They are well provided with Rainbow, Dolly Varden, Lake, Speckled and Eastern Brook Trout, sporty fish that lure anglers hundreds of miles every year.

It is easy to get to the fishing places. Sometimes you have the added pleasure of a short camping trip by horseback. Boats and guides are available.

A good souvenir of Jasper is the gold button for catching the season's heaviest trout at Maligne. But the silver and the bronze are worth having too, and the fun's in the fishing, anyway.



Fishing in the waters of the Amethyst Lakes of the Tonquin Valley.



The swift waters of the Maligne River make for good sport.

ZOO WITHOUT BARS...

The cubs play peek-a-boo with Jasper guests.

Jasper National Park is a wild life sanctuary. No big game hunting is allowed except with the camera, so the animals flourish and the pleasure of seeing them, natural in their native surroundings, is one of the attractions of the mountains. Some of them, like the bears and the deer, are your next-door neighbors, unofficial guests at the Lodge. To see others you have to go a little farther afield but you can usually count on seeing elk on a motor drive, get sight of the lordly moose in the woods, or on the higher slopes and alpine meadows see the sheep with the big curling horns and the fleecy white goats with the dainty little black horns and hooves. Don't forget to look for Canada's national animal, the beaver, at work on his dam.



The goats are more shy.

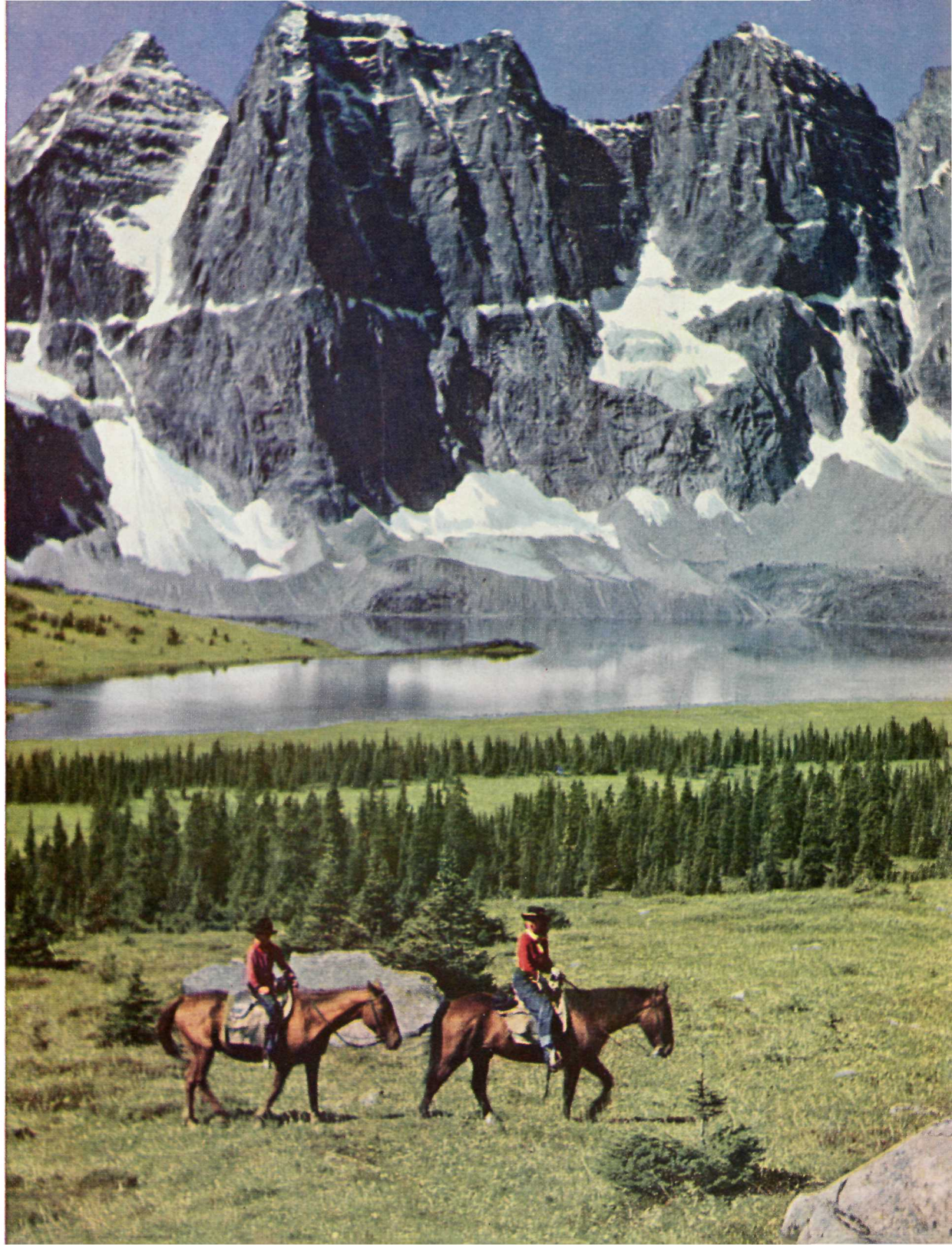
The elk can take tourists or leave them.



ON FOUR FEET...

Back home, in the cities, the motor car has put the horse out of business, but he still holds his own in the mountains and, while you can go most places on wheels, trail riding is the only way in, over thrilling mountain passes, to some of the valleys. Many of the guests at Jasper Park Lodge would rather ride than play golf and some manage to do both. Hundreds of miles are open to you—secluded forest pathways carpeted with fragrant pine needles, tracks up steep defiles, the Skyline Trail in the high altitudes, the broad Sawdust Trail along the Athabaska and up to the Pyramid benches—and you may ride for an hour or two or, with pack train and camping equipment, go on expeditions that last for days or weeks. One of the most popular trail trips is into the Tonquin Valley from the Edith Cavell motor road to the camp at the Amethyst Lakes, noted for trout fishing. A short but exciting one is to Maligne Canyon and along the turbulent Maligne River.

Trail riding in the Tonquin Valley under the beetling crags of the Ramparts.



FIT FOR A QUEEN...

One of the grandest alpine spectacles in the world is 18-mile-long Maligne Lake, surrounded by its chain of mountains, the Queen Elizabeth Ranges. These peaks, towering a mile above the mile-high lake, rise sheer out of the water and the best way to see them is from a boat. Not until you pass the Narrows do they begin to reveal themselves in all their

splendor, as hidden glaciers come into view and the walls divide into the wings of colossal palaces of rock. You can get to Maligne and back in a day, travelling by motor and launch. And if you want to stay longer, to fish, or because you can't tear yourself from the beauty and quietness, there is a chalet for your comfort. Nowhere in the Rockies will you find better camera subjects.





SEEING IS BELIEVING...

Without question, one of the scenic wonders of the Western World is the Columbia Icefield. Statistics are impressive. Covering more than 110 square miles, it is the largest body of ice outside the Arctic Circle. Its loftiest summits tower 11,000 and 12,000 feet above sea level. Out of its maze of glaciers trickle streams that swell into mighty rivers carrying fertility to a vast terrain and journeying thousands of miles to three oceans—the Pacific, the Atlantic and the Arctic. But facts like this convey nothing of the splendor of the Icefield. Seeing is believing, and seeing is remembering for a lifetime.

The motor trip from Jasper Park Lodge to the chalet at the foot of the great Athabaska Glacier—where you have lunch—is a thrill in itself. Every mile of the 75 brings new revelations of massive crags and ridges and rivers of ice, splendid waterfalls and tremendous panoramas over deep-cut valleys. The smaller things of the mountains are there for your pleasure, too, as you stop at a viewpoint—wild flowers, squirrels coming to be fed, whiskeyjacks minding your business, goats scrambling down the steep shale slopes on trim black hooves, a nimbus of light around their white wool. . . .

And as a climax, a trip by gaily colored snowmobile, three miles over the living ice of the Athabaska.



Snowmobiles on Athabaska Glacier of the Columbia Icefield give you a memorable experience.



Athabasca Falls, a superb mile post for a motor drive.



Stop for a breath-taking view.

JASPER FROM A MOTOR CAR...

The drive to the Icefield is the longest and the most spectacular of any in Jasper National Park, but there are other trips that should be on your list if you really want to get the most out of the mountains.

Maligne is a must. You drive from the Lodge to Medicine Lake by way of Maligne Canyon, across Medicine Lake by launch and then take to wheels again for the last lap, through the forest to the mysterious and beautiful lake known to the Indians as Chaba Imne—Great Beaver.

Both of these are all-day trips. On pages 24 and 25 you will find details of these and of shorter drives.



Everybody takes the thrilling switchback to the base of Mount Edith Cavell and the outspread wings of Angel Glacier. In the 22 miles, the cars and buses climb half a mile above the valley floor, stopping for views of the magnificent Astoria Valley. Mount Cavell, which makes you catch your breath when you first alight from the train at Jasper Station, reigns over the Athabaska Valley like a majestic queen and few travellers can resist paying homage to her.

Another popular trip is to Maligne Canyon. You will have time to walk down the canyon from bridge to bridge, with view after view of the turbulent river cutting deeper and deeper into the rock, the white water now spinning and whirling, now lost in chasmed glooms, now flowing thick and slow like heavy green oil.

To get your bearings, the first trip you will probably make is the General Drive, which takes in the Canyon, Jasper Village, Pyramid and Patricia Lakes and the Government Fish Hatchery on the Maligne River. Here hundreds of thousands of eggs are hatched every year and developed into fingerlings which are then put into the Park's lakes and streams. You may see the trout in every stage of growth.

One of the longer drives takes you to the Miette Hot Springs where steam baths and a swimming pool are operated by the National Parks Department. On the way you stop at Fiddle River Canyon and Punch Bowl Falls.

The twilight drive to the Falls is designed to give visitors an opportunity to see the wild animals which come out at dusk.



Mount Edith Cavell, reigning in splendor over the Athabaska Valley.



Jasper National Park is on the main line of the Canadian National Railways between Montreal and Toronto and the Pacific Coast at Vancouver and Prince Rupert, with connections with all important centres in North America. Two first class trains, the *Super Continental* and the *Continental*, equipped with the most modern cars for comfortable living en route, and staffed by crews trained in the arts of hospitality, cross the continent daily, and the journey is made without changing trains.

JASPER PARK LODGE

GENERAL INFORMATION

TIME—Jasper Park Lodge follows Mountain Standard Time.

Distance from Station: 4½ miles. Bus Fare: 50c per person each way.

Altitude—3,470 feet.

Baggage—Incoming Baggage: In order to avoid delay, baggage should be checked from starting point direct to Jasper Park Lodge. Guests are requested to present their baggage checks to the Lodge Porter immediately on arrival at Jasper Station.

Outgoing Baggage: Guests who wish to check baggage should present rail tickets to the Head Porter two hours before the departure of their trains. Those who have only hand baggage to check should secure tags from the Head Porter.

Banks—The Imperial Bank of Canada maintains a branch office in the Central Building.

Barber Shop, Shoe Shine Parlour, and Beauty Parlour are located in the Central Building.

Camera Supplies—Can be obtained at the Camera Shop.

Canadian Immigration Requirements—United States citizens do not require a passport to enter Canada, but it would be helpful for them to carry some proof of United States citizenship, such as a birth certificate or Voter's Registration Card.

Check-out Hour—Rooms must be vacated by 1.00 p.m. on day of departure.

Church Services—Church services for various denominations (Anglican, Roman Catholic, United Church) are held every Sunday in Jasper.

Customs—A Canadian Customs Officer is located at Jasper Park Lodge to facilitate the clearing of baggage of visitors from the United States.

Dancing—The Lodge orchestra provides dinner and evening concerts, also dance music from 9 to 12 o'clock every night except Sunday.

Electric Current—A.C. 110-115 volts, 60 cycles, single phase. Outlets for electric razors are obtainable at Front Office.

Express Service—Canadian National Express, represented at Jasper, provides express service for shipments to and from all points in Canada, United States and Great Britain.

Film Developing Service—Films left at the Camera Shop before 6:00 p.m. will be returned the following afternoon.

Laundry—One-day service.

Library—A Lending Library is operated in connection with the Specialty Shop.

Meal Hours—Breakfast 7:00 a.m. to 9:30 a.m.
Luncheon 12:00 noon to 2:00 p.m.
Dinner 6:00 p.m. to 8:00 p.m.

Snackroom open from 9:30 a.m. to midnight.

Medical Service—The services of a physician are available at all times, while a graduate nurse is in constant attendance.

Money Orders—Money Orders are sold at the Front Office.

Motion Pictures—A motion picture entertainment is given in the ballroom from 7:45 to 8:45 o'clock every evening, except Sunday.

Novelty Shop—A complete line of souvenirs, post cards, coloured glasses, etc., can be purchased at the Novelty Shop, operated in connection with the CIGAR and NEWS STAND. See also "Specialty Shop."

Passenger Representative—A Canadian National Railways Passenger Representative is located in the Railway Ticket Office in the Central Building. He will assist guests in all matters pertaining to tickets, train and boat reservations, etc.

Room Assignments—Assignment to rooms cannot always be made until 4:00 p.m. on day of arrival. Rooms must be vacated by 1:00 p.m. on day of departure.

Royal Mail Service—A Post Office is located in the Central Building and a Daily Royal Mail service is provided to and from Jasper Park Lodge. Mail should be addressed in care of Jasper Park Lodge Post Office, Alberta. Guests are requested to leave their forwarding address before departure.

Safety Deposit Boxes—Safety Deposit Boxes for the safe keeping of money and valuables are available to guests; apply at the Front Office. We cannot accept responsibility for money or articles not deposited therein.

Specialty Shop—An up-to-date Specialty Shop, located in the Central Building, carries a full line of imported woollen goods, handwoven articles, blankets, china, costume jewellery, ladies' sportswear, and an exclusive line of gentlemen's sportswear, sweaters, socks, ties, etc. See also "Novelty Shop."

Telegrams—Canadian National Telegraphs, connecting with the Western Union Telegraph Co., maintains an office at the Lodge. A complete, world-wide telegraph and cable service, as well as a telegraphic money order service, is available. From the leading exchanges of the world come regularly the latest market reports on stocks, bonds and commodities.

Telephones—Long Distance Telephone connections can be made direct from all bedrooms.

Temperature—The average daytime temperature ranges from 65 to 75 degrees F. The nights are always cool.

U.S. Funds—Are accepted in payment of Hotel Accounts at the current rate of exchange.

Valet—Ladies' and gentlemen's valet service.

WHAT TO WEAR

At the Lodge—Let your taste be your guide. Wear what you like, but you'll find sports and lounging clothes best for relaxation.



For Riding—You can get along without boots or jodhpurs or other special riding togs. Breeches or "levis" are a good idea if you have them. Don't forget a sweater or a warm shirt.



For Motoring—A medium weight coat or wrap is always useful. So are sun glasses. Wear low-heeled shoes unless you just want to sit in the car when you reach a place worth exploring.



For Day Time—That depends on the weather and what you're doing. Suit yourself . . . Just be comfortable.



For Golf—What you wear on the course at home. Skirt or slacks, short-sleeved sweater; the proper shoes and gloves. Shorts of any kind are not permitted to be worn on the golf course.



For Evening—Fuss if you like, it's up to you. Many do—many don't. The only formality at Jasper Park Lodge is that men must wear coat or jacket with tie for dinner and during the evening in the Central Building. Shorts are not worn in the Dining Room. Come prepared for cool mountain evenings.

DETAILS OF ACTIVITIES

IN JASPER NATIONAL PARK AND AT JASPER PARK LODGE

Horseback riding, mountain climbing, hiking, motoring, golfing, tennis, boating, canoeing, fishing, swimming, dancing, motion pictures and table tennis are among the recreational attractions. Details of all activities are described in the following pages. Further information may be obtained at the Motor Transportation Desk or from Fred Brewster's Rocky Mountain Camps in the Central Building, Jasper Park Lodge.

SWIMMING POOL

With guests of the Lodge the swimming pool ranks as one of the most popular attractions. Constantly changing crystal-clear glacial water, filtered and heated before entering the pool, adds to the pleasure of a dip and ensures sanitary freshness. In attendance is a competent swimming instructor, with whom arrangements can be made to take lessons in swimming and diving. The use of the pool is given free to guests of the Lodge, but a charge of 25c each is made for the rental of bathing suits. Dressing rooms are equipped with showers.

GOLF

Arrangements for golfing on the Jasper Park Lodge Golf Course may be made at the Golf Club House, situated 300 yards from the Central Building. A Professional of the highest standing as player and instructor is in attendance. Equipment may be either purchased or rented.

Rates for Golf	Per Person	Family Rates	
		First Person	Others (Each)
Per round or per day	\$ 3.00	\$ 3.00	\$ 3.00
Per week	18.00	18.00	9.00
Per month	60.00	60.00	30.00
Per season	90.00	90.00	45.00

Visitors to Jasper National Park, who are not registered at the Lodge, have the privilege of playing over the golf course. Green Fees, \$3.00 a day per person.

Caddie Fees

18 holes	\$2.00
9 holes	1.25

GOLF WEEK

September 2nd to 8th, 1956

For special All-inclusive Rates from all points in Canada and the United States, consult your nearest Canadian National Passenger Representative.

TENNIS

Four hard-surfaced courts are available to guests free of charge. Guests should bring their own racquets. Tennis balls are sold by the attendant.

TABLE TENNIS

In the Recreation Room, Central Building.

BOATING

Canoeing on Lake Beauvert is a favoured pastime. Boats and canoes are available for rent at 50 cents per hour.

FISHING

Speckled trout fishing waters are found at Maligne Lake and Maligne River, as well as at Medicine Lake and Beaver Lake, where fighting Eastern Brook Trout, artificially propagated, await the angler.

Jacques Lake, situated between the Maligne and Rocky Rivers, offers Dolly Varden trout; Beaver Dam Creek (four miles from the Lodge), Wabasso Lakes and Buffalo Prairie (ten miles distant), and Hardisty Creek at Athabaska Falls (twenty-one miles away), are stocked with Rainbow trout.

Amethyst Lakes in the Tonquin Valley, abundantly supplied with Rainbow trout, offer excellent sport.

Chalets, boats, and boatmen are available. Arrangements for the journey to these lakes and chalets by automobile, motor boat and saddle-horse, can be made at Fred Brewster's Rocky Mountain Camps.

Fishing tackle may be either purchased or rented in the town of Jasper. Enquire at Fred Brewster's Rocky Mountain Camps in the Central Building.

LICENCE REQUIRED FOR FISHING

A licence is required to fish the waters of Jasper National Park. This may be obtained from front office cashier, Jasper Park Lodge, or from the Park Wardens at a cost of \$2.25 per person for entire season, or \$1.00 for two months from date of issue.

Anglers must have licences in their possession while fishing.

AUTOMOBILE SIGHTSEEING DRIVES AND OTHER MOTOR SERVICES

Arrangements may be made at the Motor Transportation Desk in the Central Building of Jasper Park Lodge for all scheduled and special motor trips.

Jasper Park Lodge owns and operates its own transportation system and its automotive equipment consists of luxurious passenger automobiles and buses. The chauffeurs, besides being experienced drivers, are well versed in the history and lore of the Park. They thus make thoroughly competent guides, whose knowledge and experience add much to the journeys along these historic trails.

Guests holding drive coupons are requested to present them at the Motor Transportation Desk as soon as possible after arrival in order to facilitate their trip arrangements.

Private touring cars will be operated on any regular drive, when cars are available without interrupting or interfering with regular services. Minimum charge: 5 full bus fares.

Half fare for children under twelve years on all motor drives.

No passports required by U.S. citizens to enter Canada, but it would be helpful to carry some proof of United States citizenship, such as a birth certificate or Voter's Registration Card.

A friendly welcome awaits you at the Border and throughout the Dominion.

Canadian currency is now on the free market and its value in terms of U.S. dollars may fluctuate from day to day. Americans, if they so desire, may buy Bank Drafts payable in Canadian funds, or Canadian currency from their own bankers in the United States. When exchanging U.S. dollars at Jasper Park Lodge, such funds will be converted at the current rate of exchange.

U.S. Government Revenue tax, when applicable on tickets or orders purchased in U.S., is additional to rates quoted above.

SIGHTSEEING MOTOR DRIVES

NOTE:—Starting point of all sightseeing drives—Main Entrance, Jasper Park Lodge.

The Station Agent at Jasper will make arrangements for railway patrons, who are not guests of the Lodge, to be taken from the station in Jasper Park Lodge motor equipment on any of the scheduled drives, Nos. 1 to 8 inclusive. Regular rates will apply.

Departure hours and schedules for these drives have been carefully planned to permit visitors to view without haste the scenic wonders of the Park.

No. 1: General Drive—Thirty-five miles return. Motors leave the Lodge at 9:15 a.m. and 2:30 p.m. Time, approximately 3 hrs. Bus fare per person, \$4.00. This drive embraces a wide variety of valley, lake, canyon and mountain scenery and includes a visit to the Fish Hatchery and a side trip to see the bears. The route, after following the Athabaska River, skirts Lakes Annette and Edith before gradually ascending the roadway to Maligne Canyon. From this vantage point the tourist stands in awe before the snow-capped grandeur of lordly mountains and the mighty sweep of the Athabaska Valley, which loses itself in endless vistas of alpine beauty. Maligne Canyon, a tremendous gorge descending to a depth of 188 feet, and remarkable for its potholes, is a never-ending source of wonder and amazement. On the return journey the Athabaska River is followed to its junction with the Maligne River, where a stop is made to view the Government Fish Hatchery; from here the route continues over the Athabaska River bridge to join the Main Highway to Jasper, where a glimpse is obtained of "the Raven," one of the largest totem poles in existence. Continuing along to the foot of Pyramid Mountain and passing en route Lakes Patricia and Pyramid, the drive again runs through Jasper before terminating at the Lodge.

No. 2: Glacier of the Angel (Mount Edith Cavell)—Forty-four miles return. Motors leave the Lodge at 9:15 a.m. and 2:30 p.m. Time, approximately 3 hours. Bus fare per person, \$4.00. Offering excellent motoring, this drive by a course of wide-sweeping switchbacks reaches an altitude of nearly 2,000 feet above the floor of the valley and gives the tourist an ever-changing series of strikingly beautiful panoramas. The highway, terminating at the foot of the famous glacier affords an excellent view of this vast field of living ice. *The highest point reached on this drive is 6,300 feet above sea level.* Light lunches and refreshments can be obtained at the Tea Room near the foot of the Glacier.

No. 3: Miette Hot Springs and Fiddle River Canyon—Eighty miles return. Motors leave the Lodge at 8:45 a.m. Time, approximately 4 hours. Bus fare per person, \$6.00. The route, after skirting the shore of Lake Mildred, follows the Athabaska River, which it crosses to join the Inter-Provincial Highway, whence it extends for miles down the Athabaska Valley to Jasper Lake and beyond to Punch Bowl Falls. A short stop is made to view this unique waterfall and then the trip continues along the rim of the Fiddle River Canyon for another eleven miles before finally reaching the famous Miette Hot Springs. At this point, hot sulphur spring water, varying in temperature from 79 to 128 degrees F., comes boiling out of the mountain side. Motors will remain long enough to permit bathing in the pool. *The highest point on this drive is 4,510 feet above sea level.*

The Miette Hot Springs consist of three main springs, which issue from the rocks along the banks of Sulphur Creek. The springs, non-volcanic in nature, owe their heat to chemical action, caused by surface water coming in contact with certain minerals in the limestone rock formation. The combined flow of the three springs reaches a total of approximately 170,000 gallons every 24 hours.

The Swimming Pool and the Steam Baths at Miette Hot Springs are operated by the National Parks Department.

The rates are:

Swimming pool—when bathing suit and towel are supplied by the Department: adults, 35c; children, 25c. When bathing suit and towel are supplied by bather: adults, 25c; children, 15c. Steam and Plunge Baths—50c per person.

No. 4: Columbia Icefield (Jasper-Banff Highway)—One hundred and fifty miles return. Motors leave the Lodge at 9:00 a.m. Time, approximately 7 hours. Bus fare per person, \$10.00. Minimum, 5 persons. The drive follows the route of the Mount Edith Cavell Drive to a point beyond the crossing of the Astoria River, whence it continues along the valley of the Athabaska. From here the route penetrates through the very heart of the Canadian Rockies to the largest and most impressive icefield outside the Arctic Circle. With an estimated area of 110 square miles, the average elevation of this amazing icefield is between 9,000 and 10,000 feet, which, because the waters of its melting glaciers travel thousands of miles to three oceans, the Atlantic, the Pacific and the Arctic, has been beautifully named "Mother of Rivers." Unquestionably, this is America's Greatest Scenic Drive. *The highest point reached on this drive is 7,000 feet above sea level.*

This trip is also operated as an afternoon and evening drive, leaving the Lodge at 2:30 p.m. It is arranged for those who wish to see the wild animals which in the evening twilight come down from the mountains and forests to the rivers and streams along the route of this great highway.

No. 6: Maligne Canyon—Medicine Lake (auto-motor boat)—40 miles return. Motors leave the Lodge at 1:30 p.m. Time, approximately 4½ hours. Cost per person, \$6.50. The route is over the road to Maligne Canyon and beyond for fourteen miles to the lower end of Medicine Lake; at this point passengers are taken on a scenic motor-boat cruise across the lake. A unique feature of this lake is that, although thirty feet deep during the summer, it completely disappears through invisible outlets in the fall of the year.

No. 7: Maligne Canyon—Twelve miles return. Motors leave the Lodge at 10:00 a.m. and 2:30 p.m. Time, approximately 1½ hours. Bus fare per person, \$2.00. This canyon, into which the Maligne River plunges through a gorge 188 feet deep, ranks among the most extraordinary in the Canadian Rockies. The route lies over a gradually ascending roadway from which the tourist obtains magnificent views of lordly mountains and charming vistas of the Athabaska Valley. The Fish Hatchery on the lower Maligne River beyond Lake Edith is also of interest.

No. 8: Punch Bowl Falls—"A Twilight Drive"—Sixty miles return. Motors leave the Lodge at 7:00 p.m. Time, approximately 3 hours. Cost per person \$3.50. The route, after skirting the shore of Lake Mildred, follows the Athabaska River, which it crosses to join the Inter-Provincial Highway, whence it extends for miles down the Athabaska Valley to Jasper Lake and beyond to Punch Bowl Falls and Valley. Affording a very wide variety of mountain scenery, this trip is highly recommended as an evening drive, for after sunset, animal life frequents the numerous lakes and streams in this region, and it is usually possible to see sheep, goats, deer, bears, moose, etc., from the motor car. Return to the Lodge in ample time for dancing, bridge, etc.

U.S. Government Revenue tax, when applicable on tickets or orders purchased in U.S., is additional to rates quoted above.

SPECIAL MOTOR SERVICES

Medicine Lake—Beaver Lake—Lower Maligne River. Provided arrangements are made at the Motor Transportation Desk before 7:00 p.m. the evening prior to departure, anglers who wish to fish these waters can leave Jasper Park Lodge at 8:00 a.m. and 10:00 a.m., and leave the far end of Medicine Lake on the return trip at 3:00 p.m. or 5:00 p.m. For this service a charge of \$7.50 per person (minimum two persons) will be made for transportation to Medicine Lake and return. Should a party make the trip at any time other than the foregoing, an extra charge of \$5.00 for one person, and \$2.50 each for two or more persons, will be made. If boats, guides, fishing tackle, etc., are required, notice must be given at Fred Brewster's Rocky Mountain Camps in the Central Building before 7:00 p.m. the evening prior to departure.

Maligne Lake—Medicine Lake. One day combination return motor and launch trip to far end of Maligne Lake, cost \$22.00—see page 26 for details of this and other Maligne Lake trips.

Picnic Parties—By arrangement, special buses, when available, will be operated to picnic sites. Cost per person, \$1.00 for the round trip; minimum charge, \$10.00 per round trip.

By arrangement, touring cars, if available, can also be engaged for this service at special rates.

Trips to Jasper—In addition to the scheduled bus trips to Jasper, cars, when available, can also be obtained at the following rates:

One way—one to three persons, \$2.00; each additional person 50c.

Round trip—one to three persons, \$3.00; each additional person \$1.00.

Time, including shopping, not to exceed one hour for the round trip; extra waiting time will be charged for at the rate of \$3.00 per hour.

A Shopping Bus to Jasper and return operates daily (except Sunday) at 10:00 a.m. and 4:00 p.m. Cost, 50c. per person return.

Theatre Bus to Jasper every evening, except Sunday. Cost, 50c. per person return.

TAXI SERVICE—Taxi Service within the Lodge area, e.g., to the Golf Course, to the pony barns, or to and from the cabins: 25c. per person, minimum 50c. for the trip; to see the bears: 25c. per person, minimum \$1.00 for each trip.

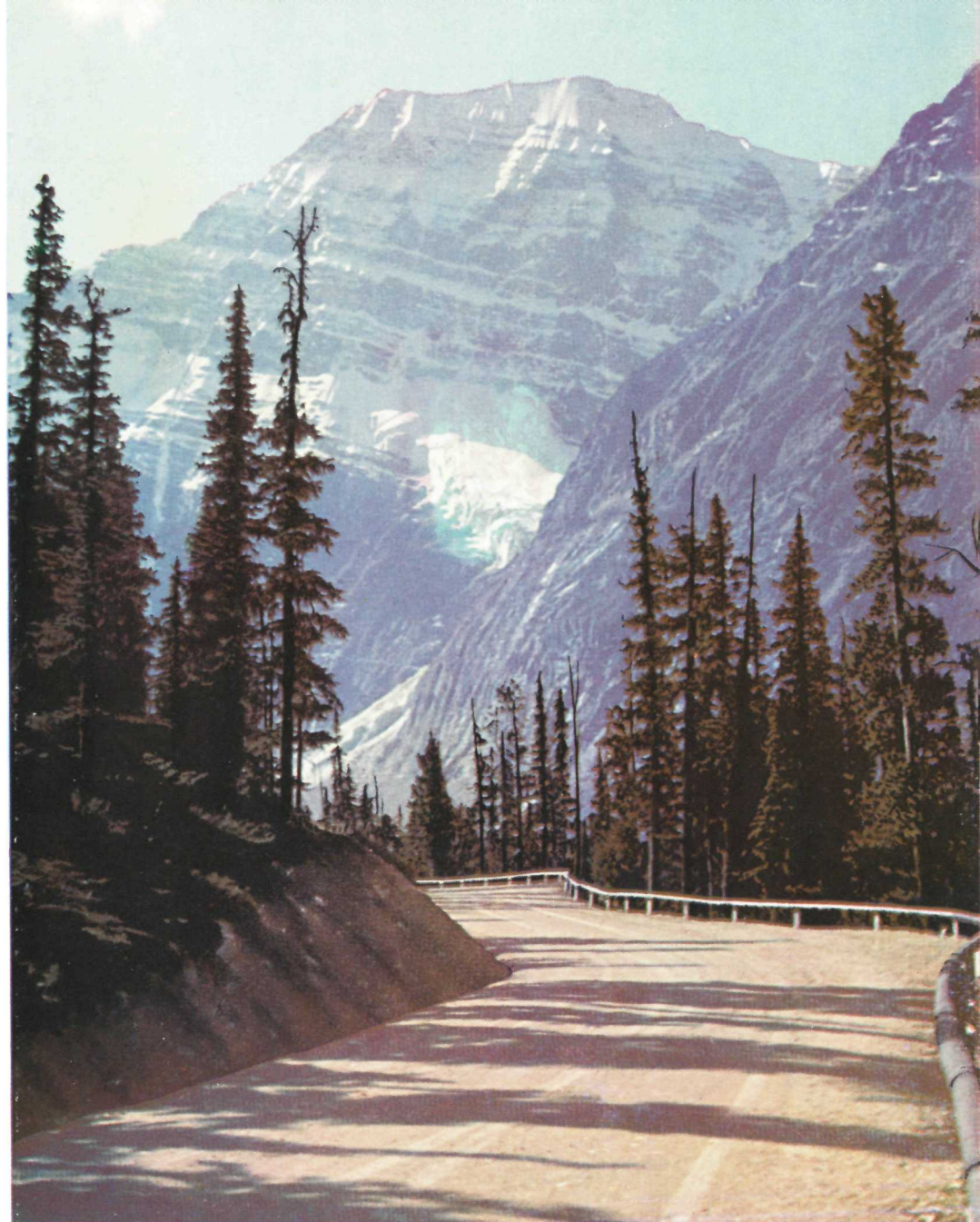
During inclement weather, free motor transportation is provided between the cabins and the Central Building.

CHURCH BUS to Jasper every Sunday morning. Leaves Main Entrance at 7:15, 7:45, 10:00 and 10:45 a.m. Cost, 50c. per person return.

Motor car Services are available at all times between 6:00 a.m. and 12:00 midnight, at the regular tariff rates. After midnight, a charge of \$2.00 will be made for each car movement within the Lodge area; outside the Lodge area, special rates will apply for any car movement between 12:00 midnight and 6:00 a.m.

For motor coach service over the Columbia Icefield Highway between Jasper and Lake Louise, Banff and Calgary, see page 31.

U.S. Government Revenue tax, when applicable on tickets or orders purchased in U.S., is additional to rates quoted above.



Mount Edith Cavell, one of the loveliest of Canada's lofty mountain peaks, presides over Jasper in regal majesty

THE MALIGNE DISTRICT

Official Outfitters—Fred Brewster's Rocky Mountain Camps Limited
Office—Jasper Park Lodge

In advertising the following services the Canadian National Railways act only in the capacity of agents; therefore, while highly recommending the outfitters to guests, they do not assume any legal responsibility whatsoever relative to the services provided.

There is no more fascinating section of the Canadian Rockies than the Maligne area which lies southeast of Jasper.

Maligne Lake itself, the largest glacial lake in the Rockies, a mile above sea level and surrounded by ice-crowned mountain peaks towering another mile into the sky, is one of the greatest scenic wonders of North America. It is 17 miles long, with 50 miles of shoreline, and although the view from the chalet, at the lower end near the outlet to the river, is impressive, the full splendor of the lake does not reveal itself until you take the boat trip beyond the Narrows, 11 miles out. You will never pack more wonder into three hours.

It is a glorious company of peaks that rises straight up from the water. Most of the mountains in the Queen Elizabeth Ranges reach an altitude of more than 10,000 feet—Sampson, Maligne, Warren on the east, Unwin, Charlton, Llysyfran and Mary Vaux on the west—and Brazeau, at the far end, tops 11,000.

As your motor boat pushes out into the lake, more and more beauty and majesty unfold. The mountains become more massive, disclosing unexpected bays and chasms, waterfalls and icefalls, wide glaciers and snowfields of dazzling white. Ridges sharp-edged against the sky, too steep-pitched to hold vegetation, are contrasted with rolling slopes rich in green forests.

It is all as fresh and unspoiled as it was in the first days of creation. And yet there is a place here for man. He may feel like tiptoeing in awe, yet he comes here to enjoy himself. The mountains of the Maligne district, the Opal Hills facing the chalet on the east, Bald Mountain, the meadows and the alplands, are full of treasure for the trail rider, the climber and the hiker, the botanist and the student of animal life. The big game hunter—with the camera—is sure of a full bag of mountain sheep, goats, moose, deer and caribou.

Much of the enjoyment of holidays in the mountains depends on good food and a good bed. At Maligne Lake Chalet you get both. When you come indoors, you are welcomed by an open fire in the comfortable lounge, and when you sit down at the table—. Well, it wouldn't be true to say that when you go home you'll talk as much about the meals as you do about the lake and the mountains, but almost!

WHERE THE FISH REALLY ARE

"The only lake in the world with nothing in it but trout!" is the way one angler describes Maligne. He comes 3,000 miles just to fish for the fighters in these sparkling mountain waters and everybody agrees with him that they are "terrifically lively!"

Nor is Maligne Lake all. Only a step from the chalet in the Maligne River, is one of the finest casting pools in Canada, all the more attractive because it is clear of trees. There is fishing, too, in Lorraine Lake, a mile and a quarter up the Shovel Pass Trail, and in Mona Lake, two miles from the chalet.

Without additional expense, fishermen in these parts qualify for membership in the Maligne River Anglers' Club by catching a speckled trout weighing not less than a pound. They receive a bronze button. The member who catches the heaviest trout of the season is awarded the gold button, emblematic of the Club Championship, and the runner-up gets a silver button. A regulation fly rod weighing not more than six ounces must be used.

U.S. Government Revenue tax, when applicable on tickets or orders purchased in U.S., is additional to rates quoted above.

A few years ago, the only way to get into Maligne was by horseback riding or hiking. Now the lake is reached by motor car on the highway to Medicine Lake, 15 miles from Jasper Park Lodge. Medicine Lake is crossed by motor boat, a trip of five miles. Maligne is 12 miles farther on, the road following the tumultuous Maligne River through the forest and across the mountain meadows. Before long, the travellers get their first exciting glimpse of the snow crowns of the Queen Elizabeth Ranges encircling the great lake.

One day trip. Operates twice daily. Leave Jasper Park Lodge at 8:00 a.m. and at 10:00 a.m., motor to Medicine Lake, take motor boat across the lake and proceed by automobile to Maligne Lake, arriving two and one-half hours later. The return journey is over the same route, leaving Maligne Lake Chalet at 2:00 p.m. and at 4:00 p.m. This trip from the Lodge to the far end of Maligne Lake—100 miles return—includes transportation, box luncheon and coffee, and scenic motor boat trip on Maligne Lake. Cost: \$22.00 per person.

Overnight trip. Leave Jasper Park Lodge at 8:00 a.m. and 10:00 a.m., arriving two and one-half hours later. The return journey leaves Maligne Lake Chalet the next afternoon at 2:00 and 4:00 o'clock, arriving at Jasper Park Lodge two and one-half hours later. Cost of transportation, one night's accommodation, four meals at Maligne Lake Chalet, and scenic motor boat trip on Maligne Lake: \$35.00 per person in canvas houses, and \$37.00 per person in cabins.

Two night visit. Leave Jasper Park Lodge at 3:30 p.m., arriving at 6:30. One full day at Maligne Lake with scenic motor boat trip. The return journey leaves Maligne Lake Chalet at 10:00 a.m., arriving at Jasper Park Lodge at 12:30 noon. Cost for transportation, two nights' accommodation, five meals at Maligne Lake Chalet, and scenic motor boat trip on Maligne Lake: \$41.00 per person in canvas houses, and \$45.00 per person in the cabins.

For those taking the above trips and wishing to drive their own cars to Medicine Lake, a reduction of \$5.00 per person will be made.

An additional charge will be made for trips at other than regular times.

Maligne Lake—Gem of the Canadian Rockies.



MALIGNE LAKE CHALET

Operated by the official outfitters, Fred Brewster's Rocky Mountain Camps Limited. Reservations may be made direct or through the Manager of Jasper Park Lodge. Open June 15 to September 10, but no advance reservations are accepted after September 1 since low water in some seasons prevents navigation on Medicine Lake. Arrangements may sometimes be made for visits before the season opens.

The Chalet is situated on Maligne Lake, at the outlet to the Maligne River, elevation 5,500 feet. It comprises a central building 25' x 40', containing a living room with big open fireplace, a dining room with a seating capacity of 30 persons, and a well equipped kitchen. Along the front, and on one side, stretches a spacious, screened veranda from which visitors get a splendid view of the lake.

Sleeping accommodation at Maligne Lake Chalet is provided in a four-room cabin, individual cabins and canvas houses. All accommodation is heated by oil burners and has electric lighting.

The canvas houses have permanent wooden frames and floors, and 6 foot walls. The furnishings are similar to those of the four-room cabin and include bureau, two chairs, grass rug, bedside mats, washstand and two comfortable single beds.

Complete bath and toilet facilities are provided in a separate building.

Comfortable beds and appetizing meals guarantee the photographer, angler and other visitors an enjoyable stay.

Rates at Maligne Lake Chalet: Cabin room, \$14 per day, \$93 per week. Heated canvas houses, \$12 per day, \$80 per week. American Plan—including meals.

RATES IN MALIGNE DISTRICT FOR FISHING BOATS, GUIDES, MOTOR BOAT TRIPS, MOTOR TRANSPORTATION, ETC.

Canoes, fishing boats and outboard motors at Maligne and Medicine Lakes, also fishing boats on Beaver, Mona and Lorraine Lakes can be hired at the following rates:

Boat with trolling motor on Maligne and Medicine Lakes—\$2.00 per hour, minimum three hours. Boatman to operate boat—\$2.00 per hour extra or \$12.00 per day.

For fishing—Fishing boats without motors. Medicine and Beaver Lakes—50c. per hour (minimum charge \$1.50); \$3.00 per day. Maligne, Mona and Lorraine Lakes—\$3.50 per day.

Fishing guides—\$12.00 per day, plus meals.

Arrangements must be made at Fred Brewster's Rocky Mountain Camps' desk (Main Lobby) for guides, fishing boats and outboard motors before leaving Jasper Park Lodge. Sufficient notice must be given to ensure the services of a competent fishing guide.

Round trip boat fare on Medicine Lake (nine miles return), \$2.50 per person. Boat leaves Medicine Lake dock at 9:00 a.m., 11:00 a.m., 2:30 p.m. and 4:30 p.m.

Round trip boat fare on Maligne Lake (34 miles return), \$6.00 per person.

Round trip transportation between Medicine Lake and Maligne Lake (24 miles return), \$7.00 per person.

The return trip from Medicine Lake to the far end of Maligne Lake takes 6½ hours.

Children 12 years and under—half fare on all Maligne Lake trips.

TONQUIN VALLEY

One of the most outstanding beauty spots in the Canadian Rockies is the Tonquin Valley and the splendid range of mountains, the Ramparts, rising along the spinal ridge of the continent from Mount Fraser northward, on the western boundary of Jasper National Park where it adjoins Mount Robson Provincial Park in British Columbia.

Tonquin Valley lies verdant, wide and open, high up on the shoulders of the Divide at an elevation of 6,450 feet. Its shining waters, the vivid green of its coarse grasses, the darker greens of the pines and the brilliance of its wildflowers, contrasting with the stark black majesty of the sky-piercing peaks, make this beautiful valley a picture long to be remembered.

Near the southern end of the valley lies a beautiful sheet of water, three miles long and about a mile wide, divided by a rocky promontory into two parts, and known as the Amethyst Lakes. The name comes from the tint of the water near the shore, probably caused by vegetation. But whatever causes it, the lakes are sheer enchantment, especially when seen from a height.

U.S. Government Revenue tax, when applicable on tickets or orders purchased in U.S., is additional to rates quoted above.

And for fishermen, looking for the sport of fighting rainbows, it has still more magic. To get into the Tonquin, you go by automobile more than half way, then on horseback or on foot. Sixteen miles from Jasper, on the road to Mount Edith Cavell, bring you to View Point. The trail in from there, ten miles to the chalet, is along the northern slope of Mount Sorrow, looking across the Astoria Valley to Mount Franchere and forward to Old Horn and the radiant Throne. After crossing Verdant Creek, the trail traverses the base of the Throne, crosses the Astoria, follows this river for two and a half miles and then, after a short climb to open country, crosses the alplands to the Amethyst Lakes. Total distance from Jasper, 26 miles.

TRANSPORTATION SCHEDULE

Operates every third day from July 1 to August 31 if snow conditions permit.

Leave Jasper Park Lodge by motor car and drive to View Point at the lower end of Cavell Lake, where guides, saddle-horses and pack-horses are stationed to complete the trip. Commencing July 1, snow conditions permitting, in-going trips leave Jasper Park Lodge 9:30 a.m. first day and arrive Tonquin Valley Camp at 4:00 p.m. same day; leave Tonquin Valley Camp 9:30 a.m. third day and arrive Jasper Park Lodge at 4:00 p.m. Luncheon is taken on the trail.

ALL-INCLUSIVE THREE-DAY TRIP TO TONQUIN VALLEY

Cost for round trip transportation and accommodation at Tonquin Valley Camp, \$63.00 per person.

Since every trip involves considerable expense, including the handling of horses and the laying in of perishables and other supplies, the outfitter is obliged to protect himself against loss by requiring a deposit of \$12.00 per person, not refundable in the event of cancellation, unless a week's notice is given.

Tonquin Valley Camp, elevation 6,500 feet, situated on the Amethyst Lakes at the base of the Rampart Range, comprises a central log building containing dining room and kitchen. Comfortable sleeping accommodation is provided in floored and heated canvas houses; each is furnished with two single beds, washstand, mirror, stove, etc.

Rates at Tonquin Valley Camp: \$12 per day, \$80 per week. American Plan—including meals.

Fishing boats can be rented for \$2.00 per half day, \$3.50 per day.

SHOVEL PASS CAMP

This camp is open from July 10 to August 31. Elevation 6,800 feet. It is located in Shovel Pass basin at timber line, is of sound construction and provides comfortable accommodation for eight persons. Alpland hiking, rock climbing, mountain game and flora. From this camp the visitor gets an excellent view of the Athabaska and Tonquin Valleys, also of the Rampart Range including Mount Geikie, of the Whirlpool Valley as far as the Continental Divide, and of the Columbia Icefield far away to the south. Rates \$8 per day, American Plan—including meals.

THE PB RANCH

Formerly Brewster's Black Cat Ranch

Open the year around

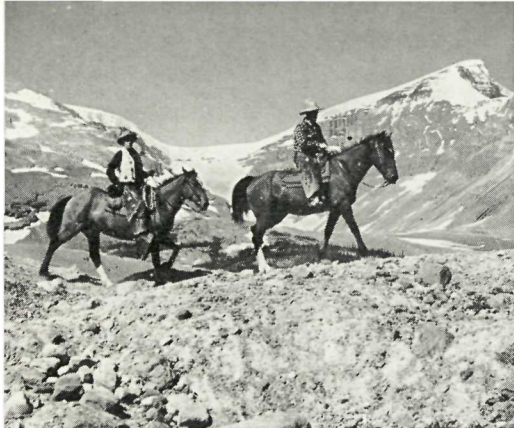
Owned and operated by Red and Nona Creighton

P.O. address—Brule, Alberta.

On the Eastern boundary of the Park, this ranch is thirty-five miles from Jasper, and six miles from Brule Station on the main line of the Canadian National Railways. Excellent riding trails, comfortable modern accommodation. Of peeled-log construction, the main building comprises a living room, dining room, and kitchen. Sleeping accommodation is provided in two-room cabins, each room being furnished with two single beds and a private bath. Rates per person \$80.00 per week, including food, lodging, saddle horse, as well as transportation from and to Brule Station.

SADDLE TRIPS TRAIL TRIPS GUIDE SERVICE

Official Outfitters—Fred
Brewster's Rocky Mountain
Camps Limited.
Office: Jasper Park Lodge



Arrangements can be made at Fred Brewster's Rocky Mountain Camps in the Central Building, Jasper Park Lodge, or any Canadian National Railways office, for all scheduled and special short saddle trips and for guide service.

Arrangements can also be made for hunting trips during September and October.

Every effort commensurate with trail conditions will be made to maintain scheduled times of departure and arrival.

It is very important that visitors who intend to hike or ride the trails bring with them suitable clothing, including riding or hiking boots, woollen stockings or socks, woollen jacket or sweater, heavy breeches, flannel or mackinaw shirt, slicker, gloves and suitable hat or cap.

No responsibility will be assumed for the loss on the trail of valuables or personal equipment.

GUIDE SERVICE

The management recommends that no mountain, saddle or hiking trip be made without the services of a guide; parties who make trips without one do so at their own risk. The cost of a mounted guide is \$6.00 per half day and \$10.00 per day. One guide is required for a party numbering up to five persons; an extra one, for more than five persons. Guide charges are pro rata according to the number in the party.

The guides are fully qualified, widely experienced and thoroughly dependable.

RATES FOR SADDLE-HORSES

Note: For a horse or guide one day consists of not more than nine (9) hours and not more than twenty (20) miles.

Horses equipped with either Mexican stock-saddle or English riding-saddle: \$4.50 per half day and \$6.50 per day. Mountain trips, \$7.00 per day. Special rate of \$35.00 per week for reserved horses.

SADDLE TRIPS

NOTE: Slickers are not provided by the Outfitter.

Saddle Trip No. 1: Sawdust Trail—The trail leads through pine and fir forests, by lake shore and river bank, skirts the golf course and ascends to the bench below Signal Mountain offering from its different vantage points ever-changing vistas of the charming Athabaska Valley. Riding time, 3 hours.

Saddle Trip No. 2: Maligne Canyon—The route is over the back trails away from the motor roads and follows the Athabaska Trail, traversing the entire length of Maligne Canyon. Riding time, 3 hours.

Saddle Trip No. 3: Golf Course and Old Fort Point (Hudson's Bay Table Top)—The route skirts the greater part of the golf course, proceeds up the Buffalo Prairie Trail to the top of the ridge and out on to Old Fort Point. This trip affords a splendid view of the Athabaska Valley and mountains on both sides of the upper river. Distance, 7 miles return. Riding time, 2 hours.

Saddle Trip No. 4: Caledonia Lake—Fourteen miles return. A small lake lying on a rocky bench above the Miette River, Caledonia Lake is reached by following the Miette road to Cabin Creek Bridge. Here the trail branches off and follows the left bank of Cabin Creek. Riding time, 4½ hours.

Saddle Trip No. 5: Pyramid Lake—Sixteen miles return. This trail leads the rider through Jasper, ascends the hill to the north, crosses Cottonwood Creek Valley and then passes along the ridge above Pyramid Lake. Riding time, 5 hours.

Saddle Trip No. 6: Buffalo Prairie-Wabasso Lake—Twenty miles return. An interesting trail winding through beautiful scenery. Excellent fishing in the lake waters. Riding time, 5 hours.

Saddle Trip No. 7: Maligne Lake and Sky Line Trail Trip—For those who enjoy riding at a high altitude, the return trip from Maligne Lake over the Sky Line Trail offers a new and exhilarating experience. **If snow conditions permit—this trip will be operated between July 10th and August 31st.**

First day—leave Jasper Park Lodge at 8:00 a.m. or 10:00 a.m., motor to Medicine Lake, take motor boat across the lake and proceed by motor car to Maligne Lake, arriving two and one-half hours later.

Second day—rest at Maligne Lake Chalet and take scenic motor boat trip to the upper end of Maligne Lake (34 miles return).

Third day—Leave Maligne Lake Chalet at 9:00 a.m. with guide and saddle-horse, cross Maligne River via the saddle-horse bridge, follow the Shovel Pass Trail over the northeast shoulder of Bald Mountain to the Evelyn Creek ford and proceed up the long, easy slope to the summit of Little Shovel Pass at timber line. From the summit of Little Shovel Pass the rider gets a splendid view of the four miles of alpland to be traversed before making the last climb to the summit of Big Shovel Pass (8,000 feet). An easy descent across the shale slopes brings the rider to the overnight camp at Shovel Pass—a distance of 14 miles.

Fourth day—the route leads upward from Big Shovel Pass to the Sky Line of the Maligne Range and for more than two miles maintains an altitude of eight thousand feet. The high altitude and peculiar location of the trail offers the rider in clear weather a magnificent view of the mountains in all directions. This is, beyond doubt, the most comprehensive panorama obtainable from a saddle and is comparable to that of the Grand Canyon of Arizona. After a short stop for lunch in the basin at the rear of Tekarra Peak, the rider continues around the east and north base to the top of Signal Mountain. The descent from Signal Mountain to the Lodge is made over the regular Signal Mountain Trail.

This is a four-day trip. Cost, including boat trip on Maligne Lake and canvas house accommodation at Maligne Lake Chalet, \$114.00 per person; for cabin accommodation, \$118.00 per person. Minimum, 4 persons.

U.S. Government Revenue tax, when applicable on tickets or orders purchased in U.S., is additional to rates quoted above.

ALL-EXPENSE TOURS

All-Expense Tours, covering stays of one to four days at Jasper Park Lodge, have been so planned that purchasers may cover the most ground in the least possible time and at the least expense. They include a selection of the most popular sight-seeing motor drives (for complete description see page 24), but do not include rail transportation to and from Jasper, or motor coach fares between Jasper and Columbia Icefield, Lake Louise, Banff and Calgary.

The costs for All-Expense Tours are based on the minimum rates for hotel room and meals. If superior type of accommodation is desired, give full particulars to your nearest Canadian National Railways' Representative, who will obtain quotation and reservation from the Manager of Jasper Park Lodge.

All-Expense Tours are arranged for those arriving at, and departing from, Jasper Park Lodge as follows:

Tours	Arriving by	Departing by
11 to 14A	Transcontinental trains from points East and West of Jasper.	All trains to points East and West of Jasper.
22	Train from Prince Rupert.	Transcontinental trains to points East and West of Jasper.
31 to 34	Transcontinental trains from points East and West of Jasper.	Motor coach to Lake Louise, Banff, etc.
41 to 44	Motor coach from Lake Louise, Banff, etc.	All trains to points East and West of Jasper.

TOURS NO. 11 - 14A INCLUSIVE

For the benefit of guests arriving Jasper Park Lodge by transcontinental trains from points East and West of Jasper and departing by trains to points East and West of Jasper.

TOUR NO. 11

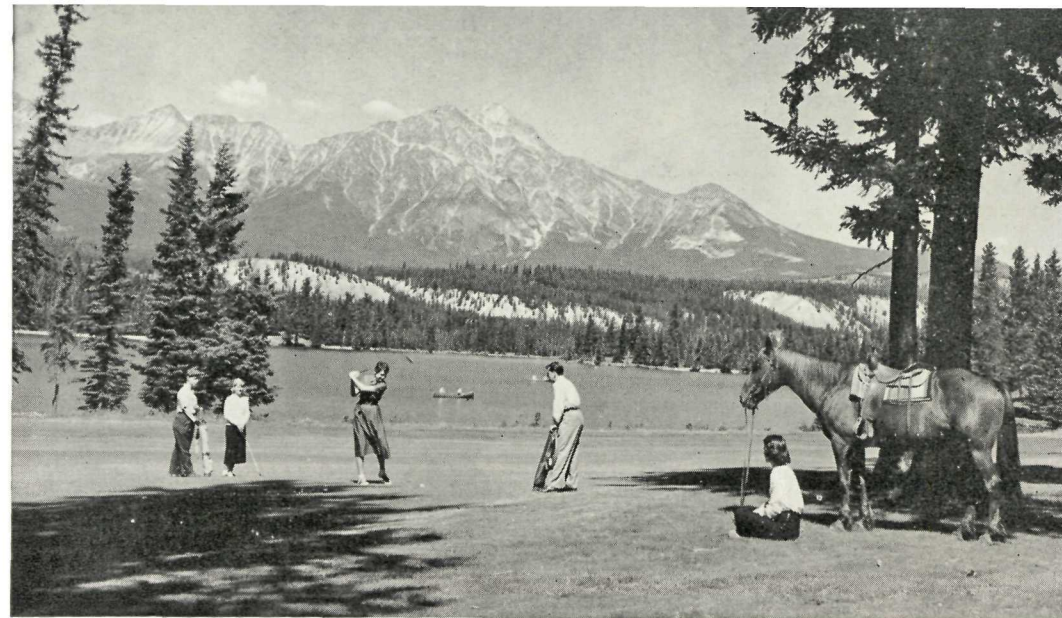
One day visit—Covers American Plan accommodation at Jasper Park Lodge, the 44-mile motor drive to Mount Edith Cavell, as well as bus transfer between the station and the Lodge. Open time for golf, tennis, horse-back riding, swimming, etc. Cost per person: without private bath, single, \$20.50, double \$18.00; with private bath, single \$22.50, double \$21.00.

TOUR NO. 12

Two day visit—Covers American Plan accommodation at Jasper Park Lodge, 80-mile drive to Miette Hot Springs, the General Drive, the 44-mile motor drive to Mount Edith Cavell, as well as bus transfer between the station and Lodge. Open time for golf, tennis, horse-back riding, swimming, etc. Cost per person: without private bath, single \$46.00, double \$41.00; with private bath, single \$50.00, double \$47.00.

TOUR NO. 12A

Two day visit—Covers American Plan accommodation at Jasper Park Lodge, General Drive, the famous Columbia Icefield Drive, the 44-mile motor drive to Mount Edith Cavell, as well as bus transfer between the station and the Lodge. Open time for golf, tennis, horse-back riding, swimming, etc. Cost per person: without private bath, single \$50.00, double \$45.00; with private bath, single \$54.00, double \$51.00.



Golfing, boating, riding . . . Jasper has them all!

TOUR NO. 13

Three day visit—Covers American Plan accommodation at Jasper Park Lodge, 80-mile drive to Miette Hot Springs, the famous Columbia Icefield Drive, the General Drive, as well as bus transfer between the station and the Lodge. Open time for golf, tennis, horse-back riding, swimming, etc. Cost per person: without private bath, single \$67.50, double \$60.00; with private bath, single \$73.50, double \$69.00.

TOUR NO. 13A

Three day visit—Covers American Plan accommodation at Jasper Park Lodge, the General Drive, the famous Columbia Icefield Drive, 80-mile drive to Miette Hot Springs, the 44-mile motor drive to Mount Edith Cavell, as well as bus transfer between the station and the Lodge. Open time for golf, tennis, horse-back riding, swimming, etc. Cost per person: without private bath, single \$71.50, double \$64.00; with private bath, single \$77.50, double \$73.00.

TOUR NO. 14

Four day visit—Covers American Plan accommodation at Jasper Park Lodge, the General Drive, the 44-mile motor drive to Mount Edith Cavell, 80-mile drive to Miette Hot Springs, the famous Columbia Icefield Drive, as well as bus transfer between the station and the Lodge. Open time for golf, tennis, horse-back riding, swimming, etc. Cost per person: without private bath, single \$87.00, double \$77.00; with private bath, single \$95.00, double \$89.00.

TOUR NO. 14A

Four day visit—Covers American Plan accommodation at Jasper Park Lodge, the General Drive, the famous Columbia Icefield Drive, the 44-mile motor drive to Mount Edith Cavell, 80-mile drive to Miette Hot Springs, as well as bus transfer between the station and the Lodge. Open time for golf, tennis, horse-back riding, swimming, etc. Cost per person: without private bath, single \$87.00, double \$77.00; with private bath, single \$95.00, double \$89.00.

U.S. Government Revenue tax, when applicable on tickets or orders purchased in U.S., is additional to rates quoted above.

TOUR NO. 22

For the benefit of guests arriving at Jasper Park Lodge by train from Prince Rupert and departing by transcontinental trains to points East and West of Jasper.

TOUR NO. 22

Two and a half day visit—Covers American Plan accommodation at Jasper Park Lodge, the General Drive, Miette Hot Springs Drive, the famous Columbia Icefield Drive, as well as bus transfer between the station and the Lodge. It also permits open time for golf, tennis, horse-back riding, swimming, etc. Cost per person: without private bath, single \$56.00, double \$51.00; with private bath, single \$60.00, double \$57.00.

TOURS NO. 31 - 34 INCLUSIVE

For the benefit of guests arriving Jasper Park Lodge by transcontinental trains from points East and West of Jasper and departing by motor bus to Lake Louise, Banff, Calgary, etc.

TOUR NO. 31

One day visit—Covers American Plan accommodation at Jasper Park Lodge, the "Twilight Drive" to Punch Bowl Falls, as well as transfer from the station to Lodge. It also permits open time for golf, tennis, horse-back riding, swimming, etc. Cost per person: without private bath, single \$17.25, double \$14.75; with private bath, single \$19.25, double \$17.75.

TOUR NO. 32

Two day visit—Covers American Plan accommodation at Jasper Park Lodge, the General Drive, Mount Edith Cavell Drive, "Twilight Drive" to Punch Bowl Falls, as well as bus transfer from the station to Lodge. It also permits open time for golf, tennis, horse-back riding, swimming, etc. Cost per person: without private bath, single \$40.75, double \$35.75; with private bath, single \$44.75, double \$41.75.

TOUR NO. 33

Three day visit—Covers American Plan accommodation at Jasper Park Lodge, the General Drive, Mount Edith Cavell Drive, Miette Hot Springs Drive, as well as bus transfer from the station to Lodge, with open time for golf, tennis, swimming, horse-back riding or motoring. Cost per person: without private bath, single \$58.75, double \$51.25; with private bath, single \$64.75, double \$60.25.

TOUR NO. 34

Four day visit—Covers American Plan accommodation at Jasper Park Lodge, the General Drive, Mount Edith Cavell Drive, Miette Hot Springs Drive, as well as bus transfer from the station to Lodge, with additional open time for golf, tennis, boating, horse-back riding, swimming, etc. Cost per person: without private bath, single \$74.25, double \$64.25; with private bath, single \$82.25, double \$76.25.

U.S. Government Revenue tax, when applicable on tickets or orders purchased in U.S., is additional to rates quoted above.

TOURS NO. 41 - 44 INCLUSIVE

For the benefit of guests arriving Jasper Park Lodge by motor bus from Lake Louise, Banff or Calgary and departing by trains for points East and West of Jasper.

TOUR NO. 41

One day visit—Covers American Plan accommodation at Jasper Park Lodge, the Mount Edith Cavell Drive, as well as bus transfer from the Lodge to station. It also permits open time for golf, tennis, horse-back riding, swimming, etc. Cost per person: without private bath, single \$20.00, double \$17.50; with private bath, single \$22.00, double \$20.50.

TOUR NO. 42

Two day visit—Covers American Plan accommodation at Jasper Park Lodge, the General Drive, Mount Edith Cavell Drive and the Miette Hot Springs Drive, as well as bus transfer from Lodge to station. It also permits open time for golf, tennis, horse-back riding, swimming, etc. Cost per person: without private bath, single \$45.50, double \$40.50; with private bath, single \$49.50, double \$46.50.

TOUR NO. 43

Three day visit—Covers American Plan accommodation at Jasper Park Lodge, the General Drive, Mount Edith Cavell Drive and Miette Hot Springs Drive, as well as bus transfer from Lodge to station, with open time for golf, tennis, swimming, horse-back riding, etc. Cost per person: without private bath, single \$61.00, double \$53.50; with private bath, single \$67.00, double \$62.50.

TOUR NO. 44

Four day visit—Covers American Plan accommodation at Jasper Park Lodge, the General Drive, Mount Edith Cavell Drive and Miette Hot Springs Drive, as well as bus transfer from Lodge to station, with additional open time for golf, tennis, swimming, horse-back riding, etc. Cost per person: without private bath, single \$76.50, double \$66.50; with private bath, single \$84.50, double \$78.50.

The Athabaska Glacier, Columbia Icefield.



MOTOR COACH SERVICE

OVER THE COLUMBIA ICEFIELD HIGHWAY

BETWEEN JASPER and LAKE LOUISE, BANFF and CALGARY

Roomy, modern, sightseeing coaches, operated by Jasper Park Lodge, leave the Lodge daily from June 14th to September 15th, for the Columbia Icefield, where connection is made with services to Lake Louise, Banff and Calgary.

SCHEDULE

Between Jasper Park Lodge and Columbia Icefield

OPERATED BY JASPER PARK LODGE MOTOR TRANSPORTATION DEPARTMENT

Buses will call at Jasper Station to pick up passengers who are not guests at the Lodge.

Read Down		Read Up	
9:00 a.m.	Lv. Jasper Park Lodge Ar.	5:45 p.m.	
9:15 a.m.	Lv. Jasper Ar.	5:30 p.m.	
12:30 p.m.	Ar. Columbia Icefield Lv.	2:30 p.m.	

Between Columbia Icefield, Lake Louise, Banff and Calgary the service is provided by Rocky Mountain Tours and Transport Company and the Brewster Transport Company—Schedules are as follows:

ROCKY MOUNTAIN TOURS AND TRANSPORT COMPANY

2:00 p.m.	Lv. Columbia Icefield Ar.	12:30 p.m.	
6:00 p.m.	Ar. Lake Louise Lv.	8:30 a.m.	
7:00 p.m.	Lv. Lake Louise Ar.	8:30 a.m.	
8:30 p.m.	Ar. Banff Lv.	7:00 a.m.	
8:00 a.m.	Lv. Banff Ar.	5:30 p.m.	
11:00 a.m.	Ar. Calgary Lv.	2:30 p.m.	

BREWSTER TRANSPORT COMPANY

2:30 p.m.	Lv. Columbia Icefield Ar.	12:00 noon	
6:00 p.m.	Ar. Lake Louise Lv.	8:30 a.m.	
6:30 p.m.	Lv. Lake Louise Ar.	8:30 a.m.	
8:00 p.m.	Ar. Banff Lv.	7:00 a.m.	
8:30 p.m.	Lv. Banff Ar.	5:50 p.m.	
11:00 p.m.	Ar. Calgary Lv.	3:00 p.m.	

FARES

	Between Jasper Park Lodge or Jasper and Columbia Icefield " " Round trip	Bus	Private Car	
			1-5 Passengers	6 Passengers
		\$ 6.25	\$ 31.25	\$ 37.50
		10.00	50.00	60.00
	Lake Louise One way	13.50	67.50	81.00
	" " Round trip	22.50	112.50	135.00
	Banff One way	18.00	90.00	108.00
	" " Round trip	29.00	145.00	174.00
	Calgary One way	20.95	130.00	158.00
	" " Round trip	34.35	195.00	234.00

Children under 12 years, half fare.

The above fares do not include meals at any point enroute.

Baggage Transfer via Motor Services—The foregoing fares include the free transfer of a reasonable quantity of hand baggage; they do not include the transfer of trunks or other heavy baggage, charges for which (between Jasper Park Lodge or Jasper and the following points) are: Columbia Icefield—\$1.25 per piece each way; Lake Louise—\$3.00 per piece each way; Banff—\$4.00 per piece each way.

U.S. Government Revenue tax, when applicable on tickets or orders purchased in U.S., is additional to rates quoted above.

SERVING YOU COAST TO COAST

Canadian National Railways operates a chain of distinguished year-round hotels in the leading cities of the nation. Economical family plan rates are available.



Hotel Vancouver, Vancouver, B.C.



NEWFOUNDLAND HOTEL - St. John's, Nfld.
 THE CHARLOTTETOWN - Charlottetown, P.E.I.
 THE NOVA SCOTIAN - - - Halifax, N.S.
 CHATEAU LAURIER - - - Ottawa, Ont.
 THE FORT GARRY - - - Winnipeg, Man.
 THE BESSBOROUGH - - - Saskatoon, Sask.
 THE MACDONALD - - - Edmonton, Alta.
 JASPER PARK LODGE - - - Jasper, Alta.

(Open during Summer season)

HOTEL VANCOUVER - - - Vancouver, B.C.
 (Under joint management of Canadian National
 and Canadian Pacific Railway Companies)



Under Construction

THE QUEEN ELIZABETH - Montreal, Que.
 (A Canadian National hotel operated in association
 with Hilton Hotels International)



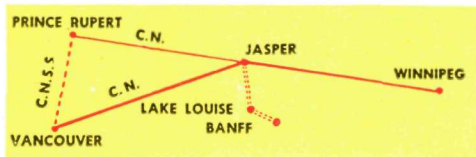
Chateau Laurier, Ottawa, Ont.

PASSENGERS MAY INCLUDE BANFF AND LAKE LOUISE IN THEIR ITINERARY ENROUTE TO, FROM OR THROUGH JASPER

In order that passengers visiting the Canadian Rockies may enjoy the scenic features of both Jasper National Park and Banff National Park, the Canadian National Railways have made arrangements whereby motor transportation between Jasper and Banff and/or Lake Louise over the famous Columbia Icefield Highway may be purchased when railway transportation is secured, thus enabling passengers to complete transportation arrangements (both rail and motor) for the entire trip at originating point.

The motor side trip over the Columbia Icefield Highway from Jasper to Lake Louise and Banff and return may be purchased in connection with your Canadian National ticket reading to or through Jasper.

Or the motor trip may be incorporated in a circle tour of the principal resorts of the Canadian Rockies, as outlined below:



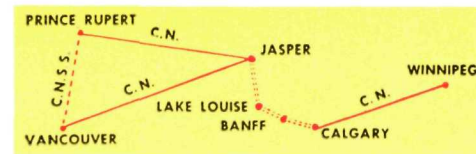
Stutfield Glacier, one of the spectacular sights along the Columbia Icefield Highway.

TO AND FROM THE PACIFIC COAST VIA JASPER, BANFF, LAKE LOUISE

Passengers holding tickets to or from the Pacific Coast via Canadian National Railways may include the three mountain resorts of Jasper, Banff and Lake Louise, as follows:

Eastbound From or Via Vancouver

Canadian National Railways to Jasper direct or via C.N.S.S. and Prince Rupert—at slight additional cost to cover meals and berth on steamer—motor transport over Columbia Icefield Highway to Banff or Lake Louise, thence returning via Canadian Pacific Railway to Vancouver, permitting stopovers as desired enroute.



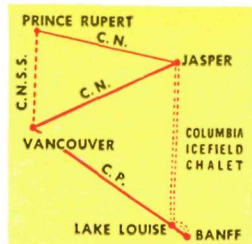
Westbound From or Via Winnipeg

Canadian National Railways to Calgary—motor transport to Jasper via Banff and Lake Louise—thence Canadian National Railways to Vancouver direct, or via Prince Rupert and C.N.S.S. (at slight additional cost to cover meals and berth on steamer).

BAGGAGE

HAND BAGGAGE will be carried free of charge on motor services between Jasper Park Lodge or Jasper and Lake Louise, Banff or Calgary. TRUNKS AND OTHER BAGGAGE will be checked by rail to the extent covered by rail transportation held by passengers. TRUNKS AND OTHER HEAVY BAGGAGE will be checked via truck service at regular tariff rates.

NOTE:—Alternative routes via Prince Rupert will be dependent on the operation of C.N.S.S. service between Prince Rupert and Vancouver.



EASTBOUND FROM OR VIA VANCOUVER

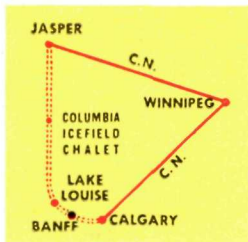
Canadian National Railways to Jasper direct or via C.N.S.S. and Prince Rupert (at slight additional cost to cover meals and berth on steamer)—motor transport over Columbia Icefield Highway to Banff or Lake Louise, thence returning via Canadian Pacific Railway to Vancouver, permitting stopovers as desired enroute.

This trip is also available in the opposite direction.

WESTBOUND FROM OR VIA WINNIPEG

Canadian National Railways to Jasper—motor transport over Columbia Icefield Highway to Calgary—thence Canadian National Railways to Winnipeg.

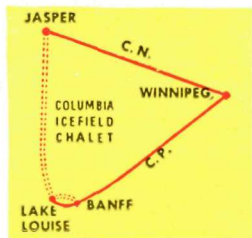
This trip is also available in the opposite direction.



WESTBOUND FROM OR VIA WINNIPEG

Canadian National Railways to Jasper—motor transport over Columbia Icefield Highway to Lake Louise or Banff—thence Canadian Pacific Railway to Winnipeg.

This trip is also available in the opposite direction.



ACCOMMODATIONS IN JASPER NATIONAL PARK

ALPINE VILLAGE

One mile from Jasper on the Columbia Icefield Highway. Accommodation 20 cabins. Open May 1 to Oct. 10. Rates \$8.00 and up for 2 persons.

ASTORIA HOTEL, Jasper

Open throughout the year. Rates: European Plan, \$4.00 per day and up. Rooms with and without bath. Lunch counter and dining room service.

ATHABASKA HOTEL, Jasper

Open throughout the year. Rooms with and without bath. Rates: European Plan, from \$4.50 per day single, and up; from \$6.00 per day double, and up. Dining room service.

BECKER'S BUNGALOWS, Jasper

Four miles from Jasper on the Columbia Icefield Highway. Open May 15 to Oct. 15. Accommodation 34 cabins. Rates: 2-4 persons, \$8.00-\$15.00 per day mid-season. Dining room.

COLUMBIA ICEFIELD CHALET

Open June 1 to Sept. 30, weather and roads permitting. Rates: European Plan, from \$5.00 per day and up. Located near the foot of the Athabaska Glacier, facing a panorama of mountains and glaciers, it is an ideal stopover point on the Columbia Icefield Highway for foot or snowmobile over the Glacier.

JASPER PARK LODGE (American Plan)

See page 20 for rates and accommodation.

LAKE EDITH CAMP

(Operated by the Edmonton Y.M.C.A.)

Transfer service available from C.N.R. Station to Camp. Open June 10 to Sept. 5.

Rates:

	Single		
Tent Cabin:	\$1.50—daily	\$ 9.00—weekly	
Chalet:	3.00 "	19.50 "	
Cottage:	4.00 "	25.00 "	
	Double		
Tent Cabin:	\$3.00—daily	\$18.00—weekly	
Chalet:	4.50 "	28.00 "	
Cottage:	6.00 "	38.00 "	
	Children 6-12		
Tent Cabin:	\$.75—daily	\$ 4.50—weekly	
Chalet:	1.00 "	7.00 "	
Cottage:	1.50 "	10.00 "	

Children 5 and under, special consideration. Special rates for groups of 20 or more. Dining Room.

MALIGNE LAKE CHALET

(Operated by Fred Brewster's Rocky Mountain Camps Ltd.)

Daily trips by car and motor boat.

Thirty-two miles from Jasper, on the lake shore at the outlet to Maligne River. Open June 15 to Sept. 10, also overnight accommodation. Rates: per person, American Plan, log cabin rooms \$14.00 per day; \$93.00 per week. Canvas houses \$12.00 per day; \$80.00 per week.

MALIGNE LAKE LODGE

(Operated by Maligne Tours Ltd., on Maligne Lake.)

Daily trips \$9.50 and \$14.50 from June 15 to Sept. 15. Rates: \$9.00 to \$13.00 per

day, American Plan. All accommodation is heated and equipped with electric light. Boats and motors for rent. Lodge guests picked up free of charge. Write Box 217, or phone Jasper 39 for detailed information.

MIETTE HOT SPRINGS BUNGALOWS

At Miette Hot Springs. Open May 24 to Sept. 15. Ten deluxe modern type cabins. 2-6 persons \$7.50 to \$12.50 per cabin. Eighteen tent cabins, 2-4 persons, \$3.50 to \$4.50. Lunch counter, dining room and store service.

THE PB RANCH

(Formerly Brewster's Black Cat Ranch).

Open the year around. On the eastern boundary of the Park, thirty-five miles from Jasper, six miles from the Brule Station on the main line of the Canadian National Railways. Rates per person \$80.00 per week, including food, lodging, saddle horse, as well as transportation from and to Brule Station.

PINE BUNGALOW CABINS

One mile east of Jasper. Open May 24 to Sept. 20. Accommodation: 50 cabins. Rates: \$6.00 per cabin for two persons and up, with or without housekeeping facilities.

PYRAMID PINES CHALET

On the shores of Pyramid Lake 3½ miles from Jasper. Open June 1 to Sept. 15. Accommodation 20 persons. Rates: European Plan, \$4.00 up. Dining room.

ROCHE BONHOMME BUNGALOWS LTD.

On northern outskirts of Jasper town. Open April 1 to Oct. 31. Rates: Cabins for two people (modern) \$7.00 to \$8.00 per night. Cabins for four people (modern) \$9.00 to \$11.00 per night.

SHOVEL PASS CAMP

(Operated by Fred Brewster's Rocky Mountain Camps Ltd.)

Accommodation 8 persons. Floored framed tents. Rates: per person, American Plan, \$8.00 per day.

SUNWAPTA FALLS BUNGALOW CAMP

Thirty-four miles from Jasper on Columbia Icefield Highway. Accommodation 60 persons. Open June 1 to Sept. 30. Rates: *Semi-modern*: \$5.00 and up for two persons; \$7.00 and up for four persons; \$1.25 for each additional person. *Fully modern cabins*: \$7.50 for two persons and up, \$1.50 extra for each additional person.

TEKARRA LODGE

One-half mile from Jasper on the Columbia Icefield Highway. 42 fully modern cabins. Rates: \$8.00 a day for 2 persons and up. Chalet rooms: for 1 person, \$4.00; \$6.00 and \$8.00 for 2 persons. Open May 15 to September 30. Dining room.

TONQUIN VALLEY CAMP

(Operated by Fred Brewster's Rocky Mountain Camps Ltd.)

On the shore of Amethyst Lakes, 20 miles from Jasper by motor car and ten miles by saddle-horse. If snow conditions permit—operates July and August. Rates: per person, American Plan, \$12.00 per day; \$80.00 per week.

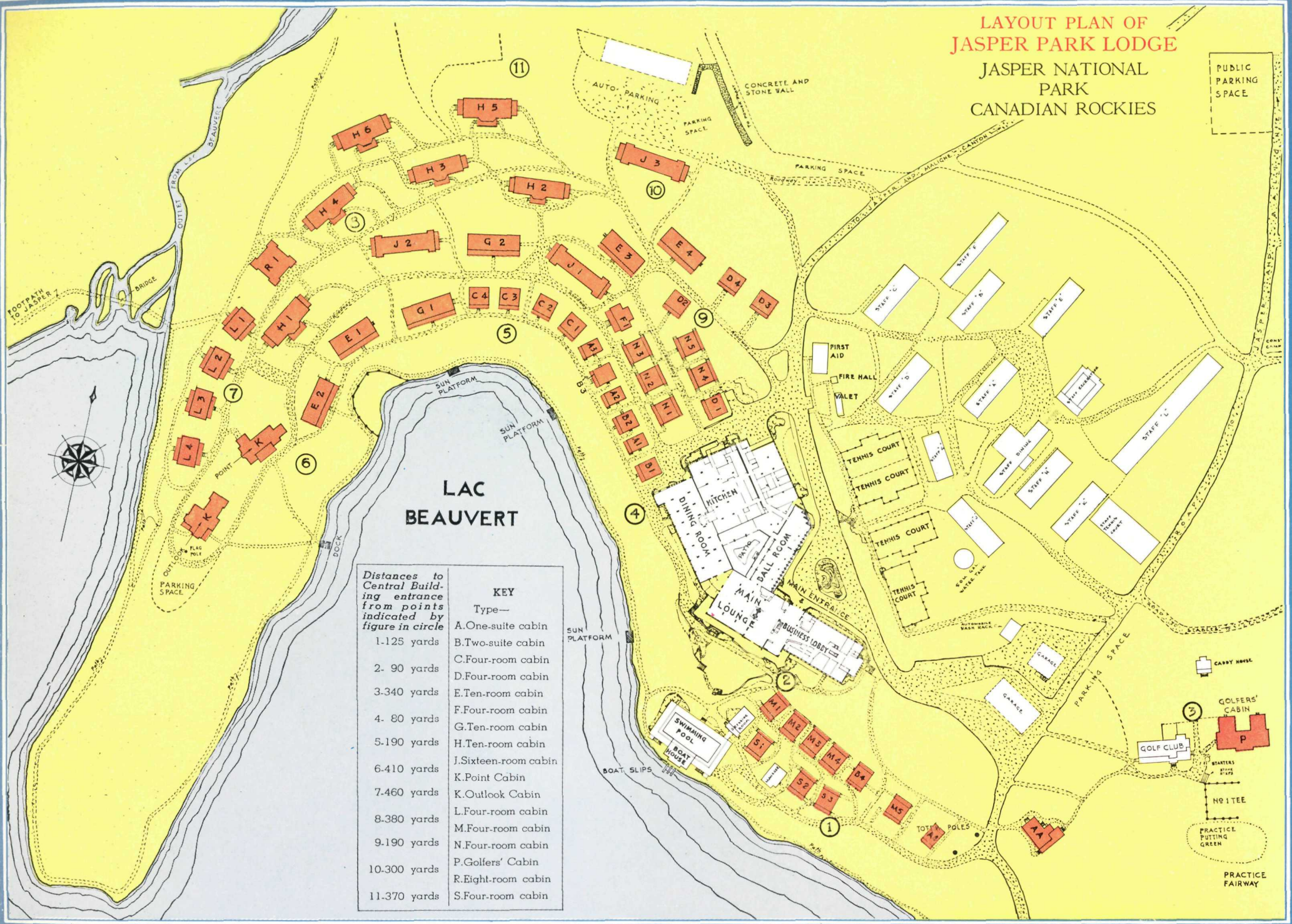
WELLS BUNGALOWS, ATHABASKA

20 miles from Jasper on Columbia Icefield Highway. Eleven log cabins and 3 tent cabins. Accommodation 46. Tent cabin rates: \$3.00 per day for 2 persons. Log cabins: \$5.00 per day for 2 persons; \$7.00 per day for 4 persons.

NOTE:—The Canadian National Railways, in furnishing the above list of rates and other information, assumes no responsibility as to its accuracy.

LAYOUT PLAN OF
JASPER PARK LODGE
 JASPER NATIONAL
 PARK
 CANADIAN ROCKIES

PUBLIC
 PARKING
 SPACE



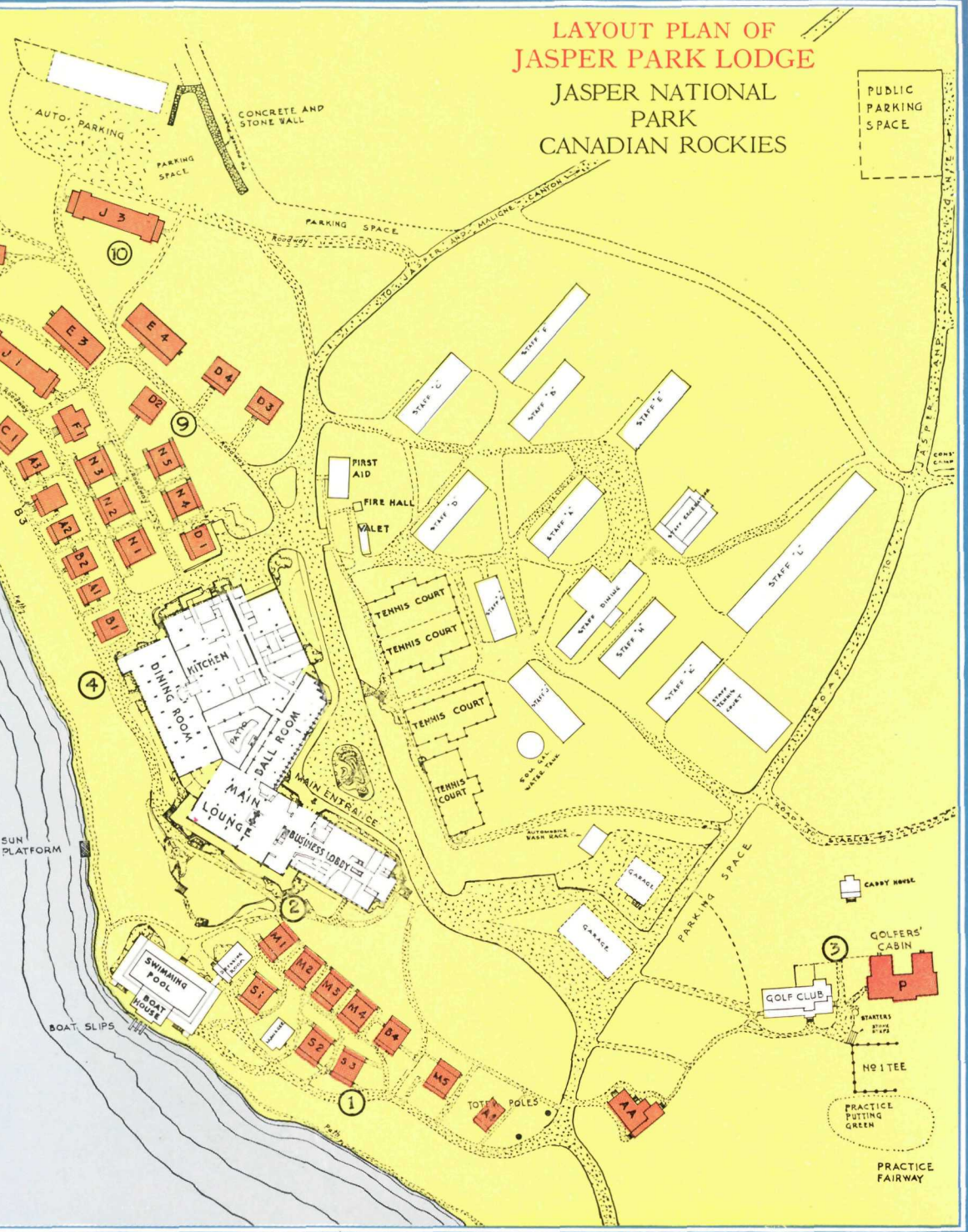
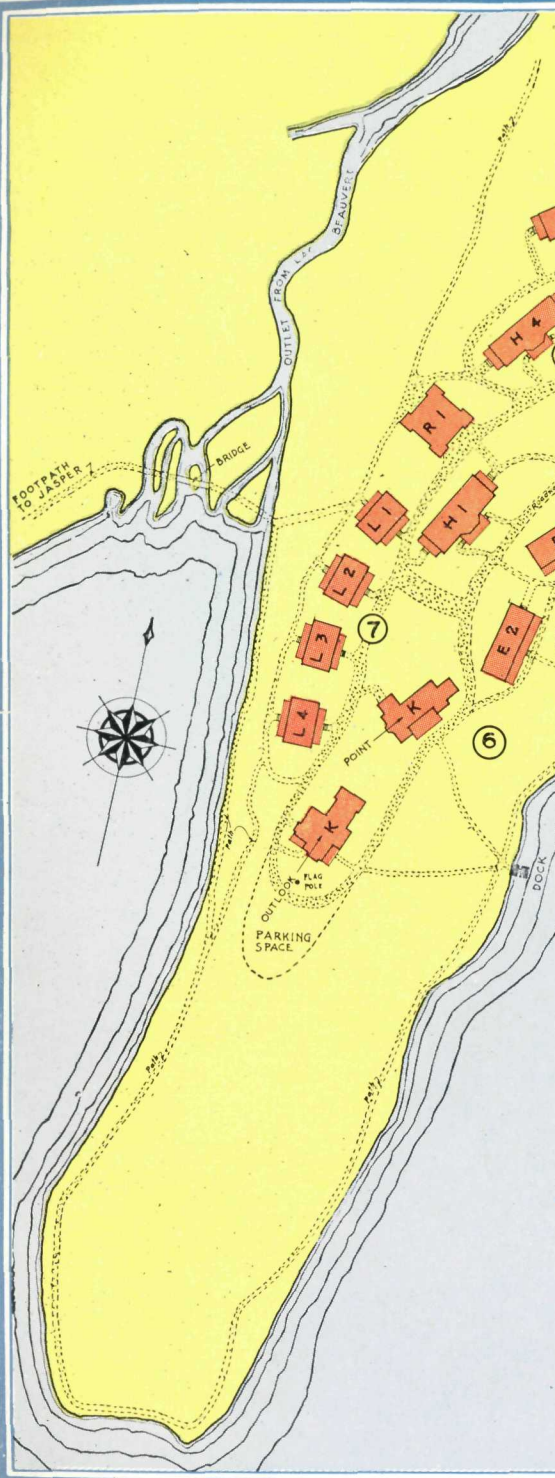
Distances to Central Building entrance from points indicated by figure in circle

Figure	Distance (yards)
1	125
2	90
3	340
4	80
5	190
6	410
7	460
8	380
9	190
10	300
11	370

Letter	Type
A	One-suite cabin
B	Two-suite cabin
C	Four-room cabin
D	Four-room cabin
E	Ten-room cabin
F	Four-room cabin
G	Ten-room cabin
H	Ten-room cabin
J	Sixteen-room cabin
K	Point Cabin
L	Outlook Cabin
M	Four-room cabin
N	Four-room cabin
P	Golfers' Cabin
R	Eight-room cabin
S	Four-room cabin



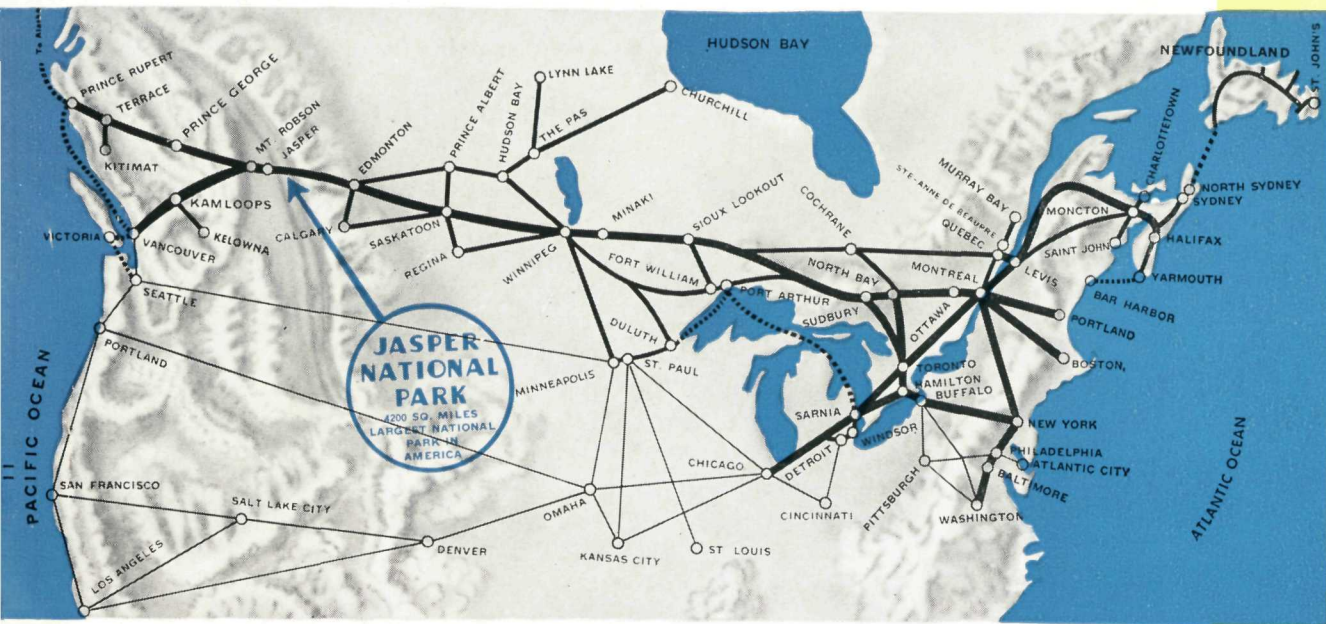
FOOTPATH TO JASPER



CANADIAN NATIONAL RAILWAYS
PASSENGER AGENCIES IN CANADA AND
UNITED STATES

Traffic Department Headquarters:
 360 McGill St., Montreal, Que.

Belleville, Ont.....	346 Front St.
Boston 16, Mass.....	497 Boylston St.
Brantford, Ont.....	153 Colborne St.
Brockville, Ont.....	Cor. King and East Market Sts.
Buffalo 2, N.Y.....	13 West Genesee
Calgary, Alta.....	212 Eighth Ave. West
Campbellton, N.B.....	Roseberry and O'Leary Sts.
Charlottetown, P.E.I.....	CNR Station
Chatham, Ont.....	220 King St. West
Chicago 3, Ill.....	103 West Adams St.
Cincinnati 2, Ohio.....	206 Dixie Terminal Bldg.
Cornwall, Ont.....	11 Second St. East
Detroit 26, Mich.....	131 W. Lafayette Blvd.
Edmonton, Alta.....	Cor. Jasper & 100th Sts.
Flint 3, Mich.....	1639 Mott Foundation Bldg.
Fredericton, N.B.....	580 Queen St.
Guelph, Ont.....	67 Wyndham St.
Halifax, N.S.....	505-507 Barrington St.
Hamilton, Ont.....	7 James St. North
Kansas City 6, Mo.....	414 Fairfax Bldg., 101 West Eleventh St.
Kingston, Ont.....	115 Princess St.
Kitchener, Ont.....	19 King St. West
London, Ont.....	430 Richmond St.
Los Angeles 17, Cal.....	510 West 6th St.
Milwaukee 3, Wis.....	Room 502, 231 W. Wisconsin Ave.
Minneapolis 2, Minn.....	1040 Rand Tower, 527 Marquette Ave.
Moncton, N.B.....	CNR Station
Montreal, Que.....	384 St. James St. W.
New York 20, N.Y.....	630 Fifth Ave.
North Bay, Ont.....	203 Main St. West
Oshawa, Ont.....	3 King St. West
Ottawa, Ont.....	Cor. Sparks & Metcalfe Sts.
Peterboro, Ont.....	324 George St.
Philadelphia 7, Pa.....	Lincoln Liberty Bldg., Cor. Broad and Chestnut Sts.
Pittsburgh 22, Pa.....	355 Fifth Ave.
Portland, Me.....	Grand Trunk Railway Station
Prince Rupert, B.C.....	528 Third Ave. West
Quebec, Que.....	10 Ste. Anne St.
Regina, Sask.....	Union Station
San Francisco 8, Cal.....	502 Shreve Bldg., 210 Post St.
Sarnia, Ont.....	131 Front St. North
Saskatoon, Sask.....	CNR Station
Seattle 1, Wash.....	214 Vance Bldg., Third Ave. & Union St.
Sherbrooke, Que.....	50 Depot St.
St. Catharines, Ont.....	13 Queen St.
Saint John, N.B.....	49 King St.
St. John's, Nfld.....	CNR Station
St. Louis 2, Mo.....	314 North Broadway
Sudbury, Ont.....	41 Durham St. South
Toronto 1, Ont.....	6 King St. W.
Vancouver, B.C.....	527 Granville St.
Victoria, B.C.....	Cor. Gov't. & Fort Sts.
Washington 5, D.C.....	922 Fifteenth St. N.W.
Windsor, Ont.....	364 Ouellette Ave.
Winnipeg, Man.....	Cor. Portage and Main Sts.
Woodstock, Ont.....	414 Dundas St.



Map showing principal Canadian National lines and routes from important Canadian and United States centres to JASPER NATIONAL PARK in the Canadian Rockies. Round trip excursion tickets are on sale to Jasper, Alta. In addition, one way, also round trip tickets to destinations beyond Jasper are valid for stopover at Jasper within limit.



YOUR AGENT **D H**
DANMARKSHAVN
 WOODSTOCK, VERMONT



EUROPEAN REPRESENTATIVES

London, S.W.1, Eng.....	17-19 Cockspur St.
London, E.C.2, Eng.....	Orient House, 42-45 New Broad St.
Liverpool, Eng.....	Cunard Bldg., Water St.
Glasgow, C.2, Scotland.....	9 Bothwell St.
Paris, France.....	1 Rue Scribe
Antwerp, Belgium.....	9 Koolkaai

AUSTRALIAN AND NEW ZEALAND
REPRESENTATIVES

Sydney, Australia.....	"Scottish House", 19 Bridge St.
Melbourne, Australia.....	"Collins House", 360 Collins St.
Wellington, New Zealand.....	Guardian Assurance Co. Bldg., Cor. Featherston & Brandon Sts.