



Gwaii Haanas
National Park Reserve, National
Marine Conservation Area Reserve,
and Haida Heritage Site

GWAII HAANAS

TRIP PLANNER

Legacy Pole © Jason Sharfo

Canada

 HAIDA NATION

WHAT IS GWAII HAANAS?

Gwaii Haanas National Park Reserve, National Marine Conservation Area Reserve, and Haida Heritage Site is a wild place. With no road access, stores, cell phone coverage and little signage, it is a true wilderness experience. The breathtaking beauty of the place is awe-inspiring.

Gwaii Haanas is one of the only areas in the world that is protected and managed from sea floor to mountain peak. It is also unique because it is managed as a true and equal partnership between the Government of Canada and the Council of the Haida Nation through the Gwaii Haanas Archipelago Management Board.

Visitors come from all over to explore this jewel at the edge of the world, with its sheltered sandy bays, turquoise inlets, Haida villages, and old growth forests. Gwaii Haanas' unique combination of coastal temperate ecosystems and Haida culture make this a place like no other on earth.

Gwaii Haanas visitor experiences can include paddling kayaks or catching the wind and sailing alongside Pacific white-sided dolphins and seeing humpback whales breaching. Visitors can float through Burnaby Narrows, teeming with intertidal life, and see a vast array of species.

Archaeological evidence of human habitation on these islands goes back at least 14,000 years. Throughout these millennia, the Haida have developed a complex society and culture. They create art, ceremony, medicine, and meet their needs through their intimate connection to the land and sea. Haida art forms, reflecting the intertwining of the people with the land, sea, and spirit world, continue to garner international recognition.



© Skidegate Band Council



© Skidegate Band Council

The Haida travelled to Tilga Kun Gwaay.yaay (Lyell Island) and took a stand against unsustainable logging practices as part of the Athlii Gwaay protest.

The Haida Nation designated the southern 15 percent of Haida Gwaii as the Haida Heritage Site.

1985



© Rolf Bettner



© Rolf Bettner

After negotiations and planning the Gwaii Haanas Agreement was signed and National Park Reserve designation was added to the Gwaii Haanas Haida Heritage Site designation.

1993



© Parks Canada



© Parks Canada



© Parks Canada, Jason Shafto



© Parks Canada, Jason Shafto

Gwaii Haanas became the first National Marine Conservation Area Reserve and aligned Canada's marine protection with the Haida Heritage Site designation.

2010

Celebrating 20 successful years of cooperation, Gwaii Haanas raised the Gwaii Haanas Legacy Pole in Hlk'yah GawGa (Windy Bay).

2013

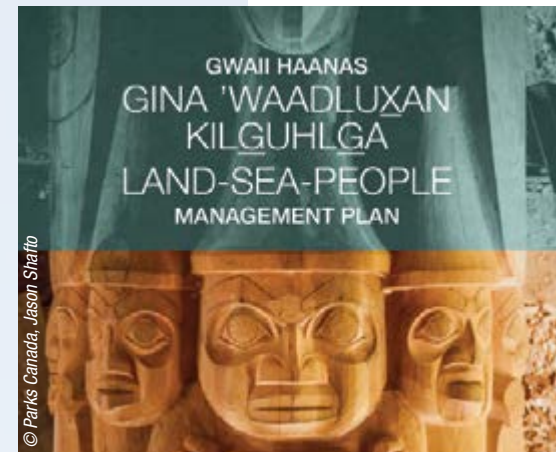


WELCOME TO THE ISLANDS OF BEAUTY

This trip planner allows you to catch a glimpse of what it's like to travel to Gwaii Haanas. We hope you leave as in love with these shining islands as have so many visitors before you.

2018

The Gwaii Haanas Gina 'Waadluxan Kilguhlga Land-Sea-People Management Plan was signed. This plan provides a blueprint for responsible and respectful stewardship that will ensure the continuity of Haida culture and protect the natural heritage of Gwaii Haanas for future generations. This is the first integrated plan in Canada for a linked terrestrial and marine protected area.



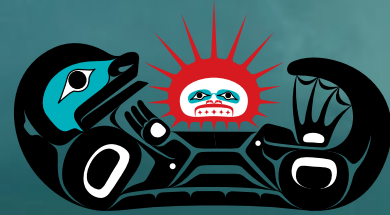
© Parks Canada, Jason Shafto

Urchin barrens compared with healthy kelp forest.



© Parks Canada, Lynn Lee

THE SEA OTTER CREST A SYMBOL OF BALANCE



The crest of the Archipelago Management Board is a unique design by local Haida artist, Chief Gitkinguaas. The sea otter and the sea urchin were chosen because of their significance in the ecological and cultural history of Gwaii Haanas.

Kelp forests are among the most productive ecosystems in the world. Historically in Gwaii Haanas, populations of sea urchins, which feed heavily on kelp, were kept in check by sea otters. This ensured an abundance

of kelp and provided habitat for many species, from sea stars to fish and marine mammals.

With the extirpation of sea otters during the maritime fur trade era, the natural balance was disrupted. The sea urchin population increased dramatically. Underwater deserts now exist where there were once rich forests of kelp. The loss of the sea otter is a powerful reminder of the vulnerability of individual species and entire ecosystems.

HOW TO VISIT

PLAN

Advance planning is key to a successful trip!

You can explore Gwaii Haanas as part of a guided trip, travelling with one of our licensed tour operators, or on a self-guided adventure.

If you would like to take a guided trip, book directly with a tour operator. (See page 15-16).

If you are planning a self-guided trip, you must make a reservation, pay a visitor use fee and attend an orientation.

Gwaii Haanas balances recreation with protection of the natural and cultural environment. With this in mind, the number of visitors entering Gwaii Haanas each day is limited. Available space is distributed between guided and self-guided travellers.

July to mid-August is our busiest period, so if you plan to visit during this time, verify the availability of your Gwaii Haanas dates before finalizing your travel plans.

RESERVE

Are you travelling with a tour operator?

If you are travelling with a licensed tour operator, you will make your reservation, pay your fee and receive your orientation directly through your operator.

Are you travelling independently?

If you are travelling to Gwaii Haanas on a self-guided trip, you will need to call our office at 1-877-559-8818, to make your reservation, pay your fee and arrange your orientation.

We are available Monday to Friday, 8.30 a.m. to 4.30 p.m. to assist you with reservations and trip planning.

When making your reservation be prepared with your planned entry and departure dates, the names and ages of everyone in your group, and if applicable, your boat name, vessel registration number, and country of registration.

We understand that for boaters travelling to Gwaii Haanas, your trip plans will be weather-dependent. However, reservations are still required. Reserve your anticipated entry and exit dates. If weather or mechanical issues result in changes to your entry date, please contact our office as soon as possible to discuss alternate plans.

ORIENTATION

If you are visiting Gwaii Haanas on your own boat or kayak, you must attend a Gwaii Haanas orientation. This session includes information on closures, traveller protocols, and what to do in case of an emergency. It is also an opportunity for you to connect with a Gwaii Haanas staff and ask questions about your upcoming trip.

For the 2021 season, the orientation will be offered by telephone or video conference. All members of your group are required to attend. Please allow 30 minutes for this session.

Once you have made your reservation and attended an orientation you will be issued your visitor guide and permit tag.

Orientations are available Monday to Friday from 9.00 a.m. to 4:30 p.m. Please be prepared to book your orientation time slot when you make your reservation.

GWAII HAANAS FEES

MAY 1 TO SEPT 30

	DAILY FEE	SEASONAL FEE
Adult	\$20.03	\$120.29
Senior (65 years or over)	\$16.97	\$100.26
Youth (17 & under)	FREE	FREE (Tax included)

ABOUT GWAII HAANAS

A WILD PLACE

Facilities in and around Gwaii Haanas are minimal. Access is limited to boats and seaplanes.

There are no roads, stores, or fueling facilities. There are a few mooring buoys, two water hoses, and limited navigational aids.

Make daily travel plans flexible to accommodate weather delays. Bring enough fuel and food to last for a few extra days. Carry clothing and equipment for a variety of weather conditions.

This area has significant tidal variation, strong currents, rapidly changing weather, and strong winds that develop with little or no warning.

Take the time to learn about the waters you plan to navigate.

If you are unsure of the area or your skill level, try a guided trip. Licensed tour operators offer many types and lengths of organized trips.

BOAT LAUNCH

The closest boat launch to Gwaii Haanas is Moresby Camp in Cumshewa Inlet, over 20 nautical miles from the Gwaii Haanas boundary.

Moresby Camp is a provincial recreational site, accessible by rough logging road. Check at the local visitor centres for detailed instructions on times and procedures for travelling on active logging roads. Always drive with your headlights on.



© Gregory Gould

BOATING TO GWAII HAANAS

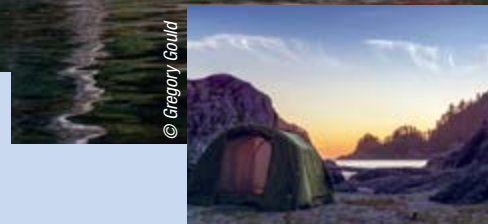
Generally, small craft travel the inside waters of Carmichael Passage and Dana Passage from Moresby Camp to Gwaii Haanas. This route avoids the exposed waters between Cumshewa Head and Talunkwan Island.

Louise Narrows has strong currents and shallow waters. Time your travel with the tide. Be aware of your draft, transit at high waters, and follow the markers. There is little room for error. Call on channel 6 before entering the Narrows to ensure there is no opposing traffic. If in doubt, avoid Louise Narrows.

Porter Head, on the Tangil Peninsula, is exposed to big seas, wind, and currents – exercise caution.

It takes about two days, weather permitting, to travel by kayak from Moresby Camp to the northern boundary of Gwaii Haanas at the Tangil Peninsula, a distance of nearly 25 nautical miles.

A popular alternative is using a licensed tour operator to transport you and your kayak to Gwaii Haanas.



© Gregory Gould



© James Thompson

© Parks Canada

DRINKING WATER

During the summer, streams may become dry. Always carry a reserve of water, and bring your own water when visiting Watchmen sites.

For the convenience of larger vessels, water hoses are available at the following locations:

- West side of Louscoone Inlet
- Dock west of Shuttle Island

These hoses supply untreated stream water which should be purified before use.

CAMPING

Gwaii Haanas has no designated campsites. However, there are many good camping spots for small groups of up to three tents. You will require maps or charts to plan your daily itinerary and overnight stops. Allow enough time to check that each planned campsite is available and suitable for your group and the current weather conditions.

It is important to note that camping at any one location is limited to a maximum of three nights unless weather prevents safe travel. Location is defined as an area within a radius of one nautical mile.

You will need waterproof bags and ropes for hanging food out of bears' reach. Food must not be cached onshore or in kayaks. Pack biodegradable soaps and shampoos. Bring a reliable cook stove. Always keep fires on the beach and well below the last high tide mark. Clean your campsite and fire so that no visible trace is left – please help maintain the wilderness experience for others.



© Parks Canada, Emil Alantzyk



© Leslie Leong



© Parks Canada, Heather Ramsay

CLOSURES

Several highly sensitive areas, including all caves, are closed permanently for ecological or cultural reasons.

Temporary closures may be necessary for reasons such as bear activity or to accommodate conservation and restoration projects.

Maps, and further information about areas closed to camping or access are provided during the visitor orientation.

Closures and areas with restricted access are listed on the Important Bulletins page of the Gwaii Haanas website.

FISHING

In the marine area of Gwaii Haanas, sustainable recreational and commercial fishing continues. However, in order to meet key ecological and cultural goals, areas of sustainable fishing are interspersed with zones of full protection, where fishing is not permitted. Detailed maps and descriptions are provided at the mandatory visitor orientation.

A license is required for saltwater fishing. These licenses are available online from Fisheries and Oceans Canada. pac.dfo-mpo.gc.ca

Freshwater fishing is not permitted within Gwaii Haanas.

PETS

Please do not bring pets, with the exception of service animals, ashore at any Watchmen Site. Pets on a leash are welcome in other parts of Gwaii Haanas.



© Leslie Leong

VISITING GWAII HAANAS

ORIENTATION LOCATION

If you are visiting Gwaii Haanas on your own boat or kayak, you must attend a Gwaii Haanas orientation. This session includes information on closures, traveller protocols, and what to do in case of an emergency. It is also an opportunity for you to connect with Gwaii Haanas's staff and ask questions about your upcoming trip.

For the 2021 season, the orientation will be offered by telephone or video conference. All members of your group are required to attend. Please allow 30 minutes for this session.

Orientations are offered Monday to Friday from 9.00 a.m. to 4:30 p.m. PDT. Please be prepared to book your orientation time slot when you make your reservation.

TRIP PERMIT TAGS

You will receive your trip permit tag after your orientation. Display this tag while travelling in Gwaii Haanas or visiting any Haida Gwaii Watchmen site.

ORIENTATION IN FRENCH

To receive an orientation in French, please contact our office as early as possible in your planning process.

KAYAK SHUTTLE SERVICE

If you use a licensed operator to drop you and your kayak in Gwaii Haanas, you are still considered an independent visitor. You must make a reservation and attend an orientation prior to your trip. See page 16 for more information.

CANCELLATIONS

Please contact the Gwaii Haanas office to cancel a reservation. (See back cover)

GWAII HAANAS MEDIA PERMITS

All media members require a media permit when travelling in Gwaii Haanas. Media are defined as journalists, photographers, videographers and bloggers travelling on assignment or on spec. It is important to contact us early to register for your permit as well as for project and trip advice. We work closely with the Haida Nation communications department to review all media permit applications.

We offer complimentary fact checking, photo and video gathering services to media before or after their travels in Gwaii Haanas.

Please contact the Gwaii Haanas office and ask for assistance from a media permit coordinator.

Long ago, Haida watchmen were posted at strategic positions around a village to raise the alarm in advance of an approaching enemy. The current Haida Gwaii Watchmen Program began in 1981 as a volunteer initiative designed to protect Haida villages and other important cultural sites in Gwaii Haanas. Today, Watchmen welcome visitors and act as guardians protecting the villages and artifacts from spring until autumn at:

K'uuna Llnagaay
(Skedans)

T'aanuu Llnagaay
(Tanu)

Hlk'yah Gawa
(Windy Bay)

Gandll K'in Gwaay.yaay
(Hot Spring Island)

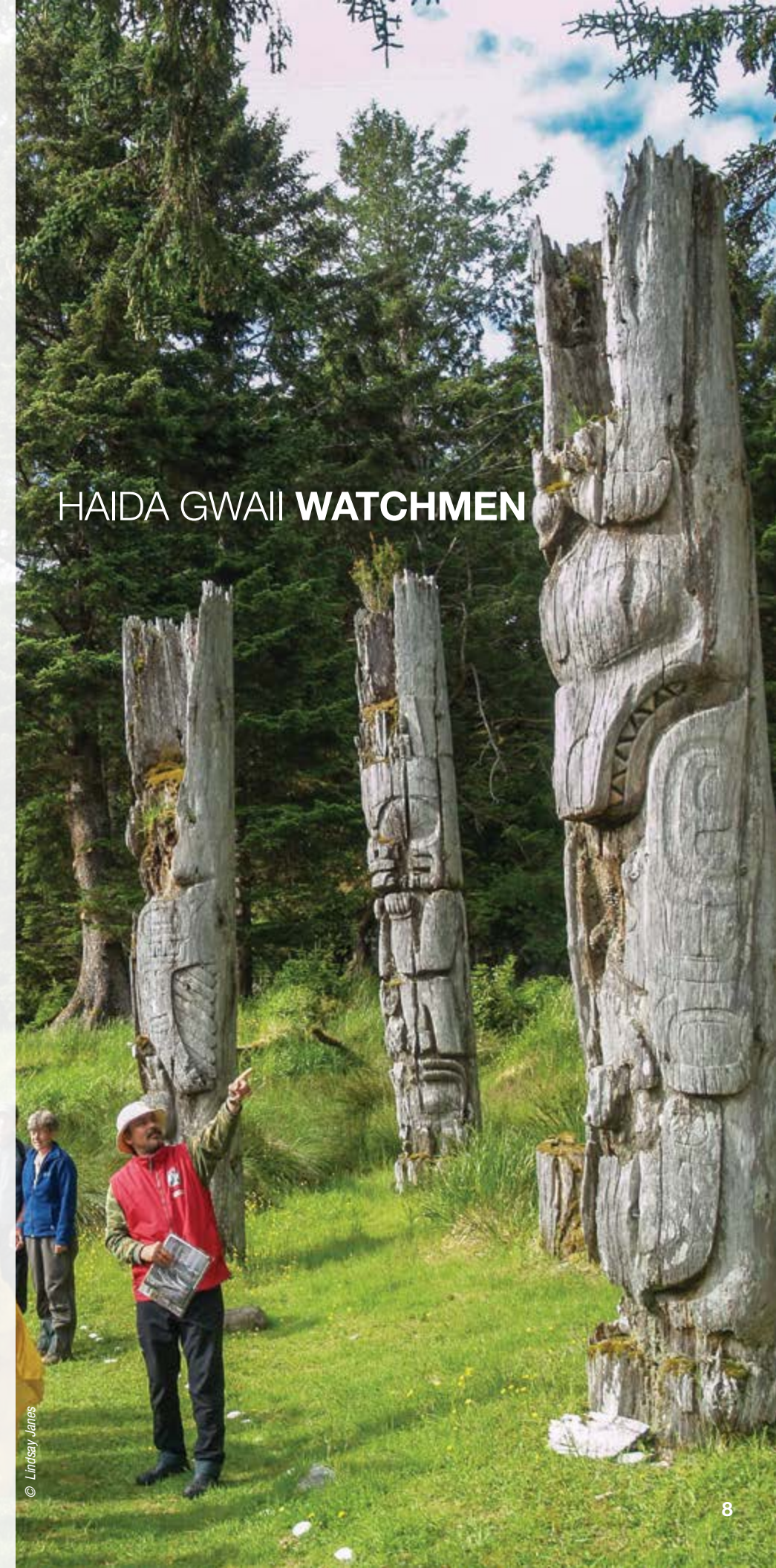
Sgang Gwaay
(Anthony Island)

Haida poles at Sgang Gwaay, a UNESCO World Heritage Site, and K'uuna Llnagaay (Skedans Village) stretch into the sky, and are an awe-inspiring glimpse into the past. Poles are maps of Haida lives and lineages and a connection with the supernatural, displaying crests associated with certain families and people.

With amazingly large posts and beams defining enormous tiered house pits dug into the earth, longhouses offer a window into traditional Haida life. Haida longhouse construction has been recognized as an architectural design unique to the Haida.



HAIDA GWAII WATCHMEN



© Lindsay James



© Parks Canada, Scott Munn



INTERPRETIVE PROGRAMS

The health and safety of visitors, employees and all Canadians is of the utmost importance to Parks Canada and the Haida Nation. We are very excited to start welcoming visitors back to Gwaii Haanas. However, for 2021, we will not be offering our regular summer interpretation programming.

We look forward to delivering our Gwaii Haanas guided walks and museum programs in 2022. If you have any questions, please contact us at 1-877-559-8818.

BIOSECURITY

YOU CAN PROTECT SEABIRDS, BATS, AND EELGRASS MEADOWS IN GWAII HAANAS!

© Lynn Lee, MTE inc.



KEEP MARINE INVADERS OUT

Your boat may be transporting nasty wee hitchhikers! Marine invaders such as sea squirts (tunicates) with names like sea vomit and star tunicate can settle on the hull of your boat and hitch a ride to Gwaii Haanas. These invasive tunicates can smother native marine species and spread rapidly.

Invasive European green crabs are deadly predators that eat native marine species and destroy eelgrass meadows. Eelgrass meadows are ocean nurseries providing habitat for juvenile salmon, herring, rockfish, Dungeness and red rock crabs.

Gwaii Haanas has few marine invaders compared to places like Vancouver and Victoria. Before you boat to Gwaii Haanas:

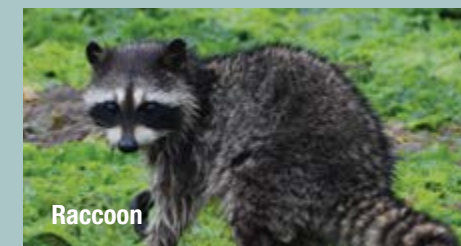
- **Clean small vessels** over a tarp on land once a season or every time you take it out of the water.
- **Clean large vessels** out of the water using a tidal grid if possible or in the water in areas known to be already infested.
- **Clean gear** with fresh water right after taking it out of the ocean or store in a sealed container to wash later
- **Remove** anything suspicious from the hull, motor, gear and other places that sit in the water.
- **Collect and dispose** of anything cleaned off your boat on land not back into the ocean.
- **Repaint** your hull regularly, ideally once a year or whenever you haul out for maintenance or repair.
- **Dry** for 7 days to kill soft bodied animals and up to 21 days to kill hard-shelled animals.
- **Decontaminate** infested equipment using very hot water, diluted bleach or by freezing until solid.

PROTECTING SEABIRDS

Gwaii Haanas is home to several globally significant populations of seabirds including ancient murrelets, rhinoceros auklets, tufted puffins and horned puffins. Introduced rats are aggressive predators of seabirds, land and shore birds, eggs and native small animals. Please help us keep rats from reaching islands that are seabird nesting colonies.

How to rat-proof your boat:

- Keep food, waste and gear in rat-proof, sealed storage areas.
- Install rat traps on your boat.
- Seal all entry points on your boat. Rats can crawl through holes as small as 1/2 inch.
- Inspect your boat regularly for signs of rats, droppings, and nests as well as chewed food, wood, or wires.
- Clean up any debris that could shelter rats.
- Know which anchorages have rats nearby and be extra cautious.
- Never throw a live rat overboard. Rats can swim!
- Use rat guards on ship-to-shore lines to prevent rats from boarding at ports.
- Pick up and use the free Gwaii Haanas Rat Aware kits.



Raccoon

PROTECTING BATS

White-nose syndrome is a serious fungal infection that has killed over five million bats in North America and led several bat species to be listed as endangered.

White-nose syndrome is spread by human transport of fungal spores. The remote location of Haida Gwaii provides a refuge for bat species threatened by the disease.

Please decontaminate any gear before coming to Haida Gwaii, especially if you are involved in caving or mining activities.

For instructions on decontamination watch:
[youtube.com/watch?v=kQjALbixJKY](https://www.youtube.com/watch?v=kQjALbixJKY)

For more info click here:
<https://www2.gov.bc.ca/gov/content/environment/plants-animals-ecosystems/wildlife/wildlife-health/wildlife-diseases/white-nose-syndrome>

Note that **all caves in Gwaii Haanas are closed** to access.

Introduced invasive species including rats, raccoons, tunicates and European green crabs are among the biggest threats to Gwaii Haanas plants, animals and ecosystems.

We all share the responsibility for stopping the spread of invasive species.

Invasive species to look out for:



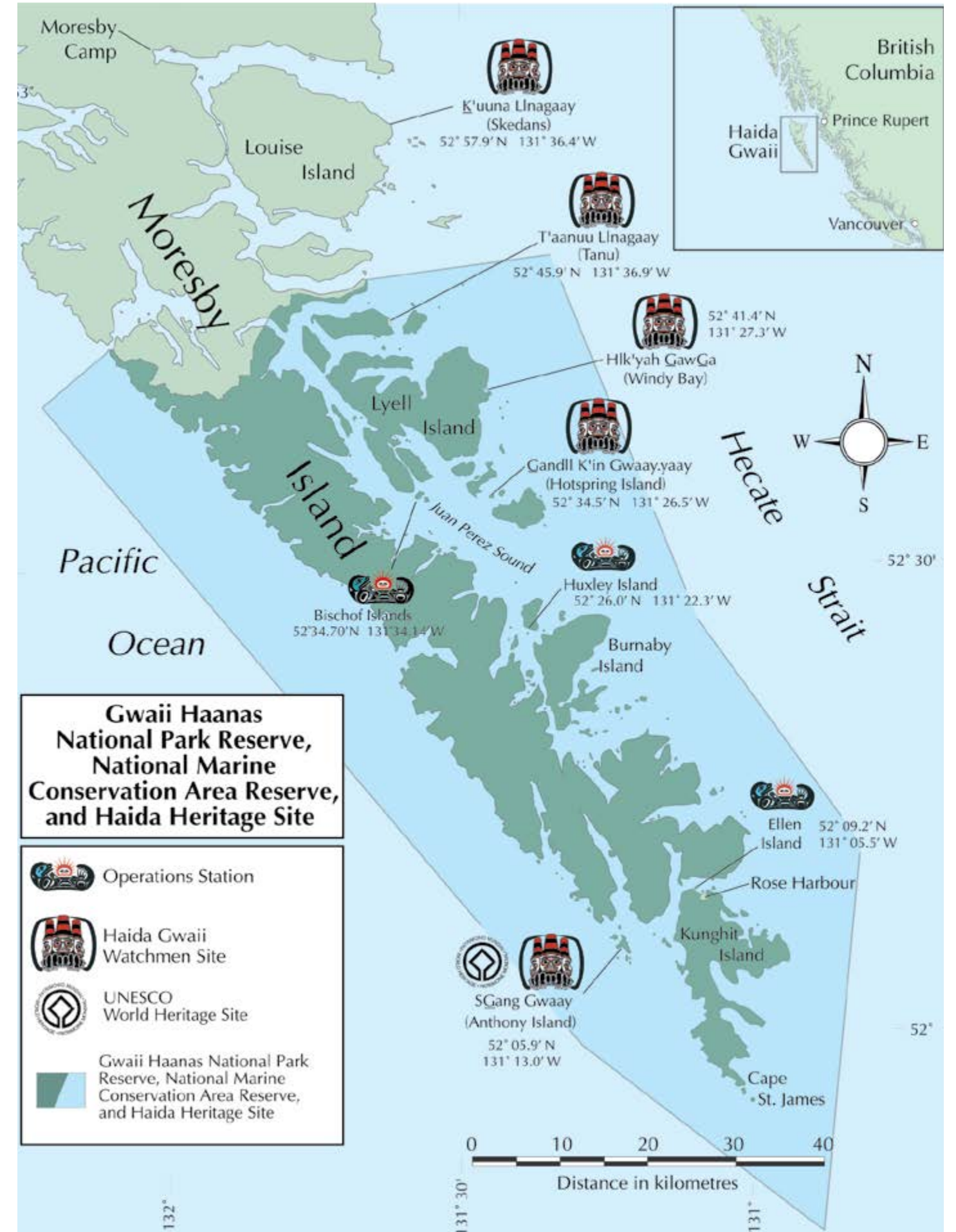
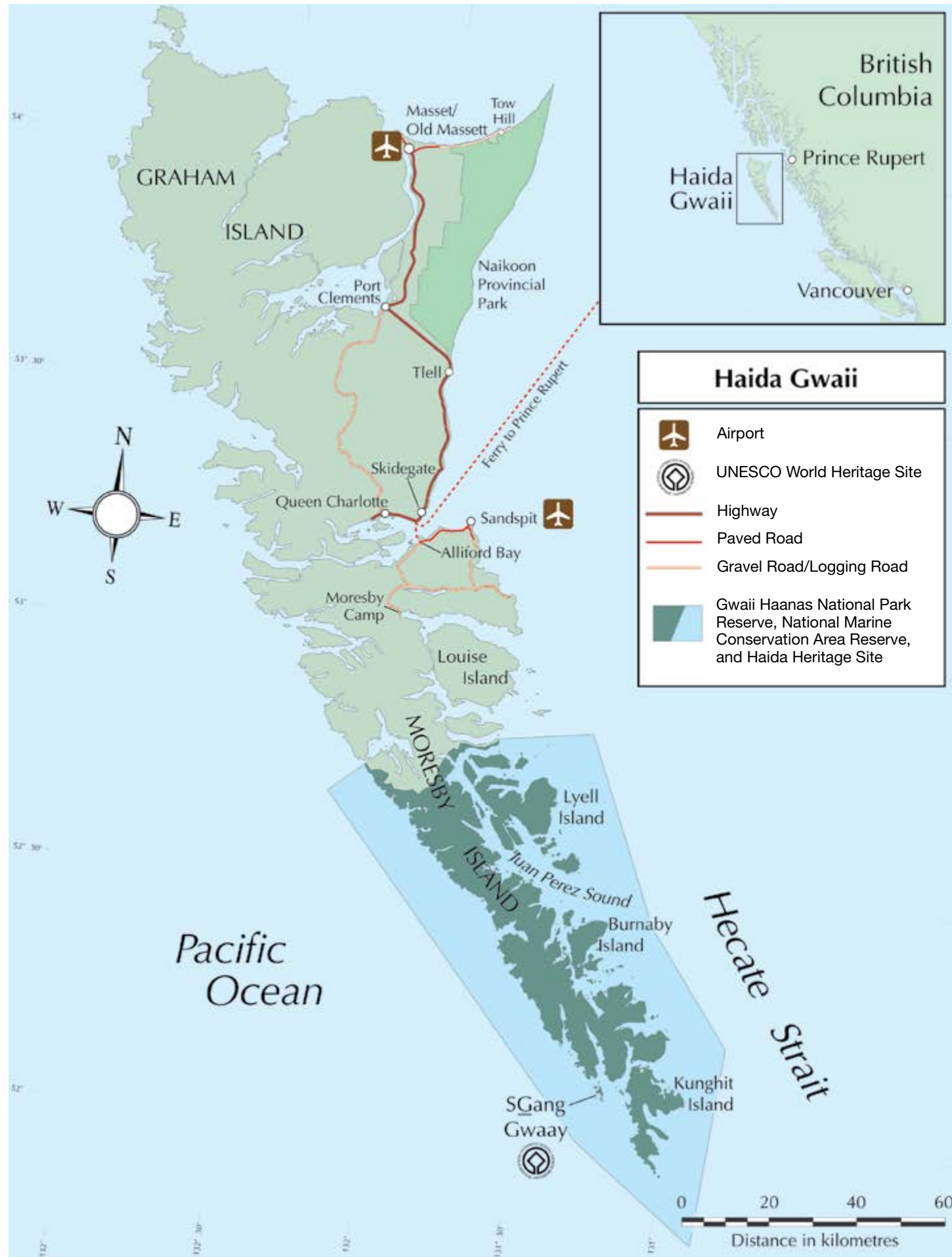
Green crab



Tunicate



Rat



TRAVELLING TO HAIDA GWAI

BC FERRIES

There are sailings two to five times a week, depending on the season, between Prince Rupert and Skidegate Landing. Day crossings are 6 hours and night crossings are 8 hours. A second route, referred to as the Inside Passage, sails between Port Hardy on Vancouver Island and Prince Rupert. Reservations are required for both these routes.

1-888-BCFERRY (1-888-223-3779)
customerservice@bcferries.com
bcferries.com

AIR CANADA

There are daily flights between Sandspit (YZP) and Vancouver International (YVR) airports.

1-888-247-2262
aircanada.com

PACIFIC COASTAL AIRWAYS

There are daily flights between Masset (ZMT) and Vancouver International Airport's South Terminal (YVR).

1-800-663-2872
reserve@pacificcoastal.com
pacificcoastal.com



INLAND AIR CHARTERS LTD.

Floatplane flights between Prince Rupert and Masset harbours.

1-888-624-2577
info@inlandair.bc.ca
www.inlandair.bc.ca

SMALL CRAFT HARBOURS

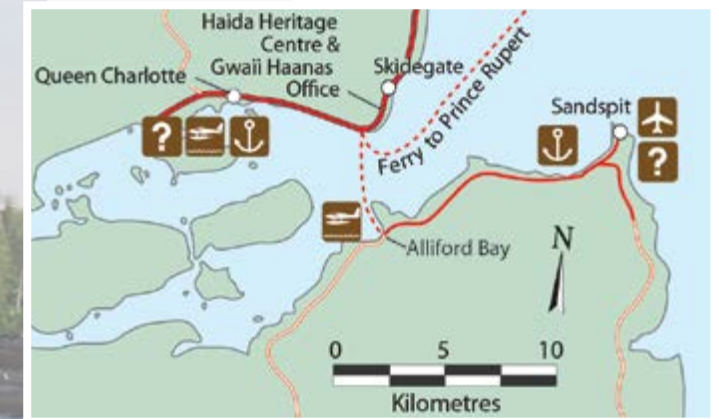
Facilities for recreational and commercial vessels are available in several communities. Facilities vary.

GETTING AROUND HAIDA GWAI

The communities of Old Massett, Masset, Tow Hill, Port Clements, Tlell, Skidegate, and Queen Charlotte are located on Graham Island. Sandspit, Alliford Bay, and Moresby Camp are located on the northern part of Moresby Island. A 20-minute ferry ride connects Moresby and Graham Islands. Eagle Transit runs a daily shuttle service between the Sandspit airport and Skidegate and Queen Charlotte. Reservations are required.

1-877-747-4461
eagletransit.net

Car rentals are available in Skidgate, Sandspit, Queen Charlotte, and Masset. Book in advance.





© James Thompson

LICENSED TOUR OPERATORS

Licensed operators offer a variety of expeditions, tours and transportation options. Excursions range from flight seeing and day trips by motor boat to longer sea kayak and sailing expeditions.

Only operators who are licensed by the Archipelago Management Board may operate within Gwaii Haanas.

The following is a list of all tour operators that have an allocation to operate in Gwaii Haanas. Contact tour operators directly with questions or to book a tour.

WHAT DOES LICENSING MEAN?

The Gwaii Haanas business licensing process ensures that minimum safety standards are met for all businesses that operate in Gwaii Haanas. Gwaii Haanas does not evaluate guides on the extent of their knowledge of local natural and cultural features, and service standards vary from business to business. You are encouraged to discuss your service expectations with your prospective transportation or tour operator prior to confirming your trip plans.

If you have questions about authorized tour operators, please contact the Gwaii Haanas office.



© Parks Canada, Brady Yu



© Parks Canada, Jody Bissett

LICENSED TOUR OPERATOR	CONTACT INFORMATION	WEBSITE	Air Charters	Kayak Tours	Kayak Mothership*	Kayak Rentals	Transportation Services	Power Boat Tours	Sailboat Tours	Overnight Hiking Tours
Archipelago Ventures Ltd.	info@TourHaidaGwaii.com 250-652-4913	tourhaidagwaii.com			●		●	●		
Atlas Ocean Tours	info@atlasocean.com 778-928-8514	atlasocean.com			●			●		
Bluewater Adventures	explore@bluewateradventures.ca 1-888-877-1770	bluewateradventures.ca			●				●	
Butterfly Tours	kayak@islandsofbeauty.com 604-740-7018	islandsofbeauty.com		●						
Gnoses Sailing Adventures	svgnoses@gmail.com	gnoses.com			●		●		●	
Green Coast Kayaking Ltd.	info@gckayaking.com 250-637-1093	gckayaking.com		●						
Gwaii Haanas Guest House and Kayaks	mailbox2021@gwaiihaanas.com 778-300-6300	gwaiihaanas.com			●	●	●	●		
Haida Gwaii Charters (2010) Ltd.	250-360-6184 sailpiraeus@gmail.com	sailpiraeus.com							●	
Haida Syle Expeditions	info@haidastyle.com 250-637-1151	haidastyle.com					●	●		
Highlander Marine Services Ltd.	250-637-1111 hms@haidagwaii.ca	highlandermarine.ca					●			
Inland Air Charters	info@inlandair.bc.ca 250-624-2577	inlandair.bc.ca	●				●			
Kingfisher Wilderness Adventures	info@kingfisher.ca 1-866-546-4647	kingfisher.ca		●						
Lindblad Expeditions	explore@expeditions.com 1-800-397-3348	expeditions.com						●		
Maple Leaf Adventures	info@mapleleafadventures.com 250-386-7245	mapleleafadventures.com			●			●	●	
Moresby Explorers	info@moresbyexplorers.com 1-800-806-7633	moresbyexplorers.com		●		●	●	●		
Mount Moresby Adventure Camp	mmacexecutivedirector@gmail.com	mountmoresbyadventurecamp.ca		●						
Ocean Adventures Charter Co. Ltd.	info@oceanadventures.bc.ca 604-812-9453	oceansadventures.bc.ca			●			●		
Ocean Light Adventures	adventure@oceanlight2.bc.ca 604-328-5339	oceanlight2.bc.ca			●				●	
Ocean Sound Kayaking Company	info@oceansoundkayaking.com	oceansoundkayaking.com		●						
Outer Shores Expeditions	info@outershores.ca 1-855-714-7233	outershores.ca			●				●	
Rose Harbour Guest House	mail@roseharbour.com 604-343-1870	roseharbour.com		●	●			●		●
Tofino Expeditions Ltd.	info@tofino.com 1-800-677-0877	tofino.com		●						

*Kayak mothership services listed here include either guided or unguided kayaking, and can be boat or land-based. Contact tour operators for more information.



© Leslie Leong

SAFETY AND WEATHER



© Parks Canada, Anna Maria Husband

SELF-SUFFICIENCY IN A REMOTE LOCATION

Gwaii Haanas is remote. It is critical that visitors who plan to travel on their own have the skills and are adequately prepared to be self-sufficient in emergency situations, including equipment failure. Emergency responses are weather-dependent. In foul weather it may be many hours before emergency response personnel reach visitors in distress. Below is a list of the main hazards that visitors need to understand and prepare for before coming to Gwaii Haanas.

HYPOTHERMIA

Hypothermia is the extreme loss of body heat and can result in unconsciousness and death. Hypothermia is caused by cold, but it is aggravated by wet, wind, and exhaustion. Kayakers are particularly susceptible. To prevent hypothermia, wear a warm hat in cool, damp, or windy weather; dress in layers; take frequent rest stops; and eat frequent, nutritional snacks and drinks. Pay attention to your body.

ALLERGIC REACTIONS

Any visitors who have known allergies are strongly encouraged to carry the appropriate supplies to help them manage an allergic reaction until they can obtain advanced medical care. It is recommended that all visitors include allergy medications in their first aid kits in case someone has an unexpected allergic reaction, something that can occur when people are travelling in an unfamiliar environment. Insect repellent is also recommended to minimize the discomfort associated with insect bites as well as reduce the risk of allergic reactions.

WATER CONTAMINATION

All water in Gwaii Haanas is untreated. Be prepared to adequately treat your drinking water to eliminate potential water-borne illnesses and parasitic infections.

travel.gc.ca/travelling/health-safety/food-water

WILDLIFE ENCOUNTERS

Black bears are found throughout Gwaii Haanas. They are opportunistic feeders and will take advantage of any food source left accessible to them. Because of the risks associated with bears that become habituated to human food, Gwaii Haanas expects that all visitors will store their food, garbage, and toiletries, which can be equally attractive to bears, in a way where there is NO chance that a bear can gain access. Introduced species, including rats, squirrels, and raccoons, will also take advantage of any available food. Food lockers or hanging devices are not provided in Gwaii Haanas. Visitors must come prepared to store their food using a hanging technique or by using wildlife-proof storage containers.

Bear bangers are not permitted in Gwaii Haanas.

BOATING SAFETY

All vessels, including sea kayaks, must meet the minimum safety standards contained in the Canadian Small Vessel Regulations in the Safe Boating Guide and the Sea Kayaking Safety Guide available from the Canadian Coast Guard.

tc.gc.ca

KAYAKING SAFETY

Check the Gwaii Haanas website, under Visitor Safety > Kayaking Safety, for a checklist of recommended and required items for kayaking in Gwaii Haanas.

SAIL PLAN

Leave your sail plan with a trusted family member or friend. Close your sail plan by checking in with your family or friend when you return, or you may be held financially responsible for unnecessary search and rescue costs incurred on your behalf.

The Canadian Coast Guard will accept a sail plan, if required. Call 250-627-3081.

MEDICAL INSURANCE

Gwaii Haanas field staff are trained to act as first responders in public safety and first aid emergencies.

Gwaii Haanas may request that British Columbia Ambulance provide patient care and evacuate the person to medical facilities. This protocol is consistent with those of other search and rescue agencies, including the Canadian Coast Guard. If BC Ambulance is asked to respond, they will charge the evacuated visitor directly for services performed. Costs differ for BC residents, non-residents, and for work-related injuries. Visitors should ensure they have medical insurance that includes coverage for air evacuations from remote areas.

For more information about BC Ambulance fees: bcehs.ca/about/billing/fees

VHF MARINE RADIO

All boats travelling in the Gwaii Haanas area should be equipped with a VHF radio. Each kayak group should have at least one VHF radio with two fully-charged batteries.

You will need a VHF marine radio to:

- Call for emergency assistance from Coast Guard (Channel 16)
- Listen to marine weather forecasts (Channel 21)
- Request access to Haida Gwaii Watchmen village sites (Channel 6)

To operate a VHF radio, you must be certified by Industry Canada with a minimum of the Restricted Operator Certificate (Maritime). Contact the Canadian Power and Sail Squadron for a Registered Examiner in your area: cps-ecp.ca.

MOORING BUOYS, DOCKS, AND ANCHORING

There are mooring buoys in several locations in Gwaii Haanas, as well as a dock near Shuttle Island. Visitors are advised to use these facilities at their own risk. Larger vessels should anchor. Docks and buoys at the Gwaii Haanas operations stations are limited to staff use except in the case of an emergency.

All vessels are requested to move off a buoy/anchor location after a maximum of three nights in any bay, cove, or inlet, weather permitting.

Boaters are responsible for determining safe anchorage. Recommended reading: *Sailing Directions: Hecate Strait, Dixon Entrance, Portland Inlet and Adjacent Waters and Queen Charlotte Islands*, Fisheries and Oceans Canada, 2002.

charts.gc.ca.



© Parks Canada/Carey Bergman

WEATHER

The climate of Haida Gwaii is typical of British Columbia's outer west coast – cool and wet virtually any time of the year. The east side of Haida Gwaii is considerably drier than the west, which receives between 500 and 800 centimeters of rain a year.

Winds in the summer can blow strongly for lengthy periods. These winds funnel over the islands and down inlets on the east coast creating gusty conditions that can be hazardous, especially for kayakers.

Storms associated with frontal systems occur frequently in winter and are not uncommon in the summer months. Include “weather days” in your travel plans.

A small craft warning is always in effect for the waters in this area. Boaters and kayakers must listen for cues in the Canadian Coast Guard marine weather forecasts and rely on their observations of local conditions to remain safe.

EARTHQUAKE AND TSUNAMI PREPAREDNESS

Haida Gwaii is perched at the edge of the continental shelf, and although the chances of experiencing a significant earthquake or tsunami during your trip into Gwaii Haanas are small, you should be aware of the risk. We recommend, at minimum, a tsunami emergency kit should include:

- Basic first aid kit
- Water and non-perishable food (three to seven day supply)
- Flashlight
- Battery powered radio
- Extra batteries
- Medical supplies and medications
- Blankets/bedding (sleeping bag)
- Personal hygiene items (soap, toothpaste, toothbrush, hand wipes, sanitizer)
- Signalling device
- Tarp or tent
- Matches/fire starter
- Jacket/rain gear



CHARTS AND TIDE TABLES

Before travelling in Gwaii Haanas, please ensure you understand and have experience interpreting marine charts and tide tables and using them to identify marine hazards.

Boaters of all kinds should know how to take compass bearings and use triangulation to establish position. Do not rely solely on a Global Positioning System (GPS).

All boaters must follow the collision regulations of the Canada Shipping Act.

For more details on potential marine hazards in Gwaii Haanas review the Visitor Safety section of the Gwaii Haanas website.

MARINE CHARTS

Charts at the largest scale are indispensable in this area. The table on this page covers the most frequently travelled part of Gwaii Haanas (east coast and south end). A complete list of charts for Haida Gwaii and the rest of the BC Coast and where to buy them, is available from Canadian Hydrographic Service.

charts.gc.ca

Tide tables are essential for exploring Gwaii Haanas. Tides can be extreme here - up to 7.5 m or 24 ft in tidal variation. Big tides have significant implications for safety and navigation. You'll find uncharted rocks and reefs in the near-shore waters that can be prominent at low tides or hidden under the surface at higher tides. High tides also pull driftwood off the beaches, presenting more hazards to navigation.

The Canadian Hydrographic Service publishes booklets annually that provide daily tides (time and height) for specific locations. Instructions for tide table use are also included.

Refer to: *Canadian Tide & Current Tables Volume 7, "Queen Charlotte Sound to Dixon Entrance"*

tides.gc.ca

Gwaii Haanas staff are available to answer questions on chart reading and local tide conditions at the visitor orientation session.

AREA	NUMBER	SCALE
Houston Stewart Channel	3855	1:20,000
Selwyn Inlet-Lawn Point	3894	1:73,026
Atli Inlet-Selwyn Inlet	3807	1:37,500
Juan Perez Sound	3808	1:37,500
Carpenter Bay-Burnaby Island	3809	1:37,500
Houston Stewart Channel/ Cape St. James	3825	1:40,000
Cape St. James/ Cumshewa and Tasu	3853*	1:150,000

*Chart 3853 provides a useful view of the entire Gwaii Haanas area but the scale is not suitable for navigation.

Some charts are available only in limited formats (digital or print only).



© Neil Ever Osborne

Gwaii Haanas has a new, integrated management plan. The Gina 'Waadluxan Kilgulga Land-Sea-People plan sets direction for the Archipelago Management Board to manage Gwaii Haanas from mountaintop to seafloor as a single, interconnected ecosystem. The plan outlines a shared vision for the future, includes guiding principles based on Haida cultural values, describes goals and objectives for the next ten years, and provides zoning for the land and sea.

Zoning in Gwaii Haanas does not infringe on inherent Haida rights. Maps and further information are provided to all visitors to Gwaii Haanas either through their tour operator or at the visitor orientation session.

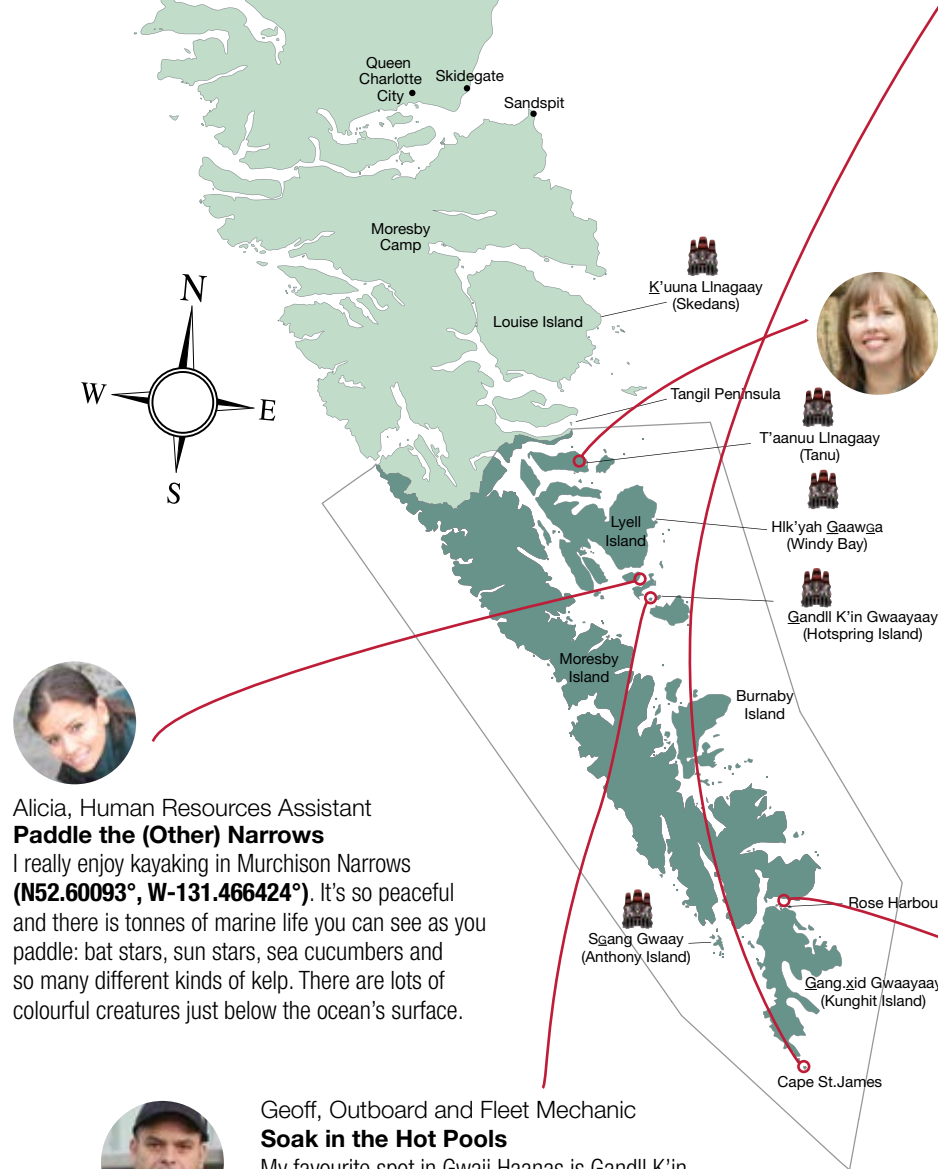
GINA 'WAADLUXAN KILGULGA LAND-SEA-PEOPLE MANAGEMENT PLAN



© Berry Wideaven

ISLANDS OF BEAUTY OUR FAVOURITE PLACES

HERE ARE SOME OF OUR TEAM'S FAVOURITE
GWAII HAANAS EXPERIENCES



Christine, Outreach and Education Officer
Visit The Haida Gwaii Watchmen
One of my favourite things to do in Gwaii Haanas is learn about the history of the different Haida Gwaii Watchmen sites. I love having a good catch-up with the Haida Gwaii Watchmen and Watchwomen over a cup of tea or coffee at one of the Haida Gwaii Watchmen cabins. It doesn't happen often, but when it does I feel like I've just visited with old friends.



Mary, Resource Management Technician
View Find in the South
Taking in the views in the southern-most part of Gwaii Haanas makes me feel like I'm in a far off place or on the edge of the continent. The Kerouard Islands (**N51.908632°, W131.015852°**) offer stunning views.

Visiting the Kerouard Islands is not an everyday trip. It's a challenge to get there so when you do make it, thanks to the right combination of weather and tides, it's a real treat. At the Cape St. James weather station, there are old shelters that are marked with signatures from visitors from the last 50 years or so. Sometimes you can even see steller sea lions or mola mola (sunfish) swimming below your boat.



Miranda, Public Relations and Communications Officer
Imagine a Forest
If you're near the T'aanuu Llnagaay Haida Gwaii Watchmen site, the native plant enclosure across the way on Kunga Island (**N 52°45.169' W 131°34.973'**) is a great place to go for a forest walk. When you're on the beach, look for a well-worn animal trail starting on the forest edge and hike in about 100 metres to see a big fenced-in area. The enclosure was built in 1998 by the Research Group on Invasive Species (REGIS), the Haida Nation and Parks Canada to see what would grow back if deer couldn't graze vegetation down. The best time to visit the enclosure is in June or July when the bees are buzzing, shrubs flowering and the greenery is growing through the fence and just imagine what it would be like if there were no Sitka Black-tailed deer to munch down the vibrant vegetation.



Alicia, Human Resources Assistant
Paddle the (Other) Narrows
I really enjoy kayaking in Murchison Narrows (**N52.60093°, W-131.466424°**). It's so peaceful and there is tonnes of marine life you can see as you paddle: bat stars, sun stars, sea cucumbers and so many different kinds of kelp. There are lots of colourful creatures just below the ocean's surface.



Geoff, Outboard and Fleet Mechanic
Soak in the Hot Pools
My favourite spot in Gwaii Haanas is Gandll K'in Gwaay.yaay (Hotspring Island) (**N52.575920°, W-131.443459°**) because I'm very proud of the pools we built there in 2017. There are three new pools you can soak in that range from 36 to 42 C in the summer.



Sandra, Finance and Administration Officer
Explore the Beach
I love Raspberry Cove (**N52.167159°, W-131.081859°**) in Houston Stewart Inlet. The beach is really nice and a bit rocky. When I visited a few years back, it was very serene. While we were there, I saw an octopus in the intertidal zone. At first I didn't notice but then I saw his eye. It was thrilling and creepy all at once.

GOOD PEOPLE WORKING TOGETHER

© Parks Canada, Jason Shafto



Gwaii Haanas would not be the place it is today if it were not for all the amazing people – past and present – who have put their heart and soul into these Islands of Beauty. Haawa (thank you)

HAAWA TO THOSE THAT STOOD ON THE LINE...
In 1985, a group led by the Haida Nation took a stand against unsustainable logging on Tllga Kun Gwaay.yaay (Lyll Island). The dedicated individuals who stood on the line and those that were involved as the support system, showed strength and respect even in the face of being arrested and charged. It is because of their sacrifice that Gwaii Haanas is protected.

HAAWA TO THE HAIDA GWAII WATCHMEN...
Since the Haida Gwaii Watchmen Program was established, Haida community members have been acting as the guardians at some of Haida Gwaii's most culturally significant sites. During the spring and summer, Watchmen live at five sites in Gwaii Haanas, guarding ancient villages and sharing stories with visitors. Meeting the Haida Gwaii Watchmen is a highlight for Gwaii Haanas visitors.

HAAWA TO ALL OUR KNOWLEDGE HOLDERS THAT WE CALL UPON
Whether it be Haida language speakers, ethnobotanists, anthropologists, archaeologists, ecologists, biologists or other researchers, we want to say thank you. We cherish your knowledge and use it to inform how we manage Gwaii Haanas. We share what we learn with our visitors through the Watchmen and our interpretive programs.

HAAWA TO THE ARCHIPELAGO MANAGEMENT BOARD...
As a true and equal partnership the AMB is made up of members from the Council of the Haida Nation, Parks Canada and Fisheries and Oceans Canada. This incredible team has worked tirelessly to move Gwaii Haanas forward. It is through your dedication to working together that we have achieved so much.

HAAWA TO OUR GWAII HAANAS TEAM MEMBERS...
From our interpreters, scientists, administrators, cultural resource advisors, and field staff, Gwaii Haanas has succeeded because of the strengths and commitment of our incredible team.

HAAWA TO OUR TOUR OPERATORS...
Every year people from all over the world visit and experience Gwaii Haanas. Thanks to you, people who would not be able to navigate Gwaii Haanas on their own are able to have the experience of a lifetime.

HAAWA TO OUR LOCAL GWAII HAANAS SUPPORTERS...
Without the support of local businesses, visitor centres, conservations groups and volunteers we would not be able to accomplish everything we have. Your support is greatly appreciated!

AND FINALLY HAAWA TO YOU, OUR VISITORS...
On average, 2,500 to 3,000 people visit Gwaii Haanas each year. As you travel through these waters, walk these beaches, interact with Watchmen and Gwaii Haanas staff, your stories are woven into ours. Haawa for coming and spending some time with us.

Haawa to all those good people who we may have missed, your contributions are no less important and live on in Gwaii Haanas...

GOOD PEOPLE
WORKING TOGETHER



CONTACT GWAI HAANAS

Phone:
1-877-559-8818 or 250-559-8818

Emergency: 780-852-3100

Email: pc.gwaihaanas.pc@canada.ca

pc.gc.ca/gwaihaanas

facebook.com/gwaihaanas