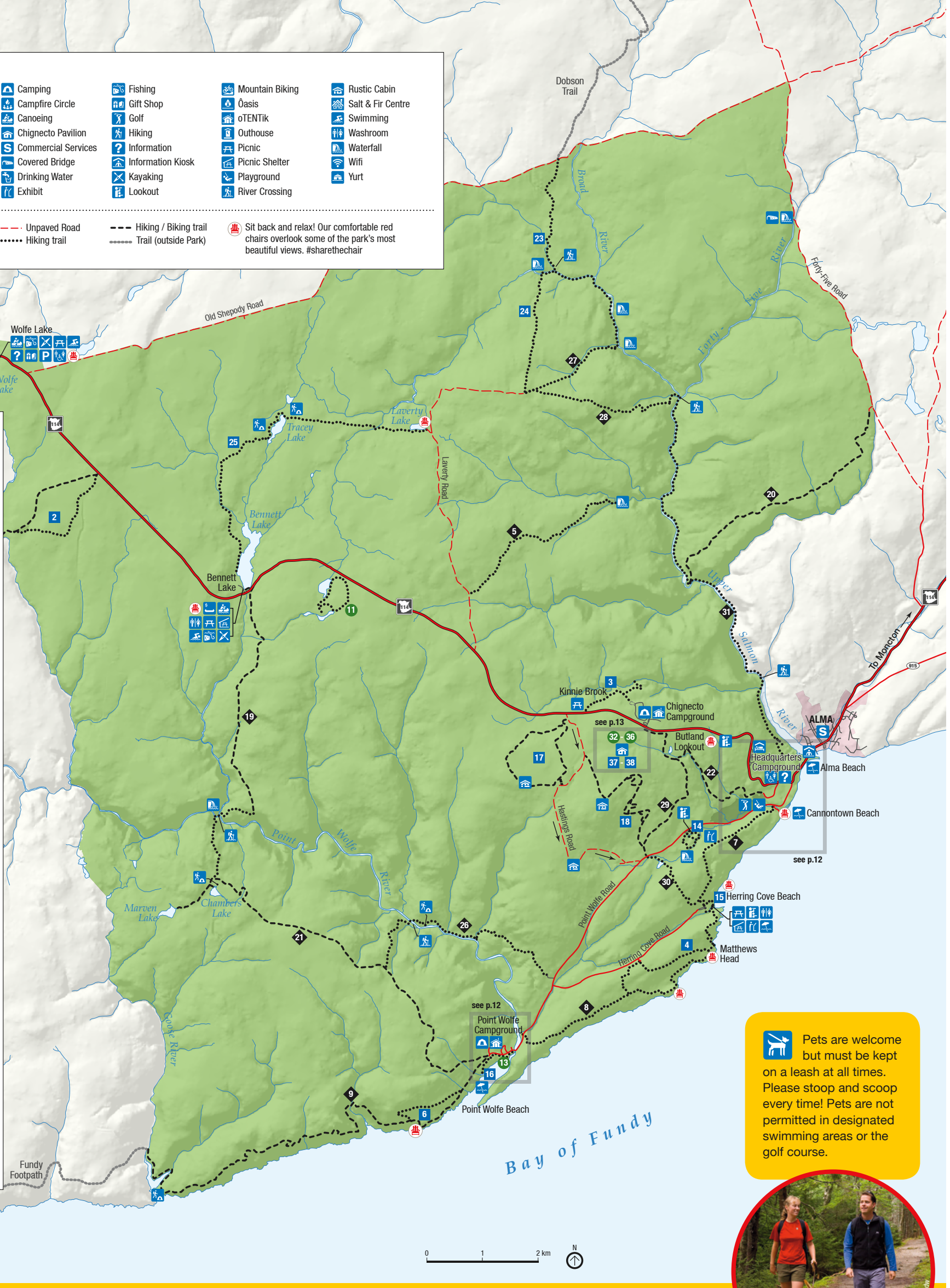


LEGEND				
Accessible	Camping	Fishing	Mountain Biking	Rustic Cabin
Accessible Washroom	Campfire Circle	Gift Shop	Oasis	Salt & Fir Centre
Accommodation	Canoeing	Golf	oTENTik	Swimming
Amphitheatre	Chignecto Pavilion	Hiking	Outhouse	Washroom
Beach	Commercial Services	Information	Picnic	Waterfall
Back-country camping	Covered Bridge	Information Kiosk	Picnic Shelter	Wifi
Bicycle Rental	Drinking Water	Kayaking	Playground	Yurt
Boat Rental	Exhibit	Lookout	River Crossing	

Fundy National Park	Unpaved Road	Hiking / Biking trail	Sit back and relax! Our comfortable red chairs overlook some of the park's most beautiful views. #sharethechair
Route 114	Hiking trail	Trail (outside Park)	
Paved Road			

- TRAIL KEY**
- Easy
 - Moderate
 - ◆ Difficult
- Please see pages 12-14 for additional trail information.
- Fundy Favourites**
- 1 MacLaren Pond
 - 2 East Branch
 - 3 Kinnie Brook
 - 4 Matthews Head
 - 5 Third Vault Falls
- Coastal Trails**
- 6 Coppermine
 - 7 Coastal (East)
 - 8 Coastal (West)
 - 9 Goose River
- Family Friendly (less than 1 hour)**
- 10 Alma Beach
 - 11 Caribou Plain
 - 13 Shiphaven
 - 14 Dickson Falls
 - 15 Herring Cove Beach
 - 16 Point Wolfe Beach
 - 32 Cygnus
 - 33 Cassiopeia
 - 34 Ursa Major
 - 35 Ursa Minor
 - 36 Orion
- Cycling Adventures**
- 17 Black Horse
 - 18 Maple Grove
 - 19 Bennett Brook
 - 20 Black Hole
 - 21 Marven Lake
 - 22 Whitetail
 - 29 Tippen Lot (North)
 - 37 Peregrine
 - 38 Pumptrack
- Great Trails**
- 23 Dobson Link
 - 24 Laverty Falls
 - 25 Tracey Lake
 - 26 Foster Brook
 - 27 Moosehorn
 - 28 The Forks
 - 30 Tippen Lot (South)
 - 31 Upper Salmon River



Pets are welcome but must be kept on a leash at all times. Please stoop and scoop every time! Pets are not permitted in designated swimming areas or the golf course.



Follow our three-way sorting process to properly dispose of waste generated in the park during your visit. For more information please visit www.eco360.ca

- Blue Bag = Recyclables:** Metals, plastics, paper, cardboard etc.
- Green Bag = Compostables:** food, tea, coffee, cooking grease, dairy products etc.
- Clear Bag = All other garbage:** household items like wipes, wraps, hygiene and latex/nylon based products etc.

Note: Designated receptacles for propane, butane canisters and other flammable containers are located at each campground exit.