

Fundy National Park's Trail System

LEGEND

- | | | | |
|----------------------|---------------------|----------------|----------------|
| Accessible Washroom | Commercial Services | Kayaking | River Crossing |
| Accommodation | Covered Bridge | Lookout | Rustic Cabin |
| Beach | Exhibit | oTENTik | Swimming |
| Back-country camping | Fishing | Picnic | Washroom |
| Boat Rental | Golf | Picnic Shelter | Waterfall |
| Camping | Information | Playground | |
| Canoeing | Information Kiosk | | |

- Route 114
- Paved Road
- Fundy National Park
- Unpaved Road
- Hiking trail
- Hiking / Biking trail
- Trail (outside Park)
- Sit back and relax! Our comfortable red chairs overlook some of the park's most beautiful views. #sharethechair

TRAIL KEY

- Trail (easy)
 - Trail (moderate)
 - Trail (difficult)
- Please see pages 6-10 for additional trail information.

Fundy Favourites

- 1 MacLaren Pond
- 2 East Branch
- 3 Kinnie Brook
- 4 Matthews Head
- 5 Third Vault Falls

Coastal Trails

- 6 Coppermine
- 7 Coastal (East)
- 8 Coastal (West)
- 9 Goose River

Family Friendly

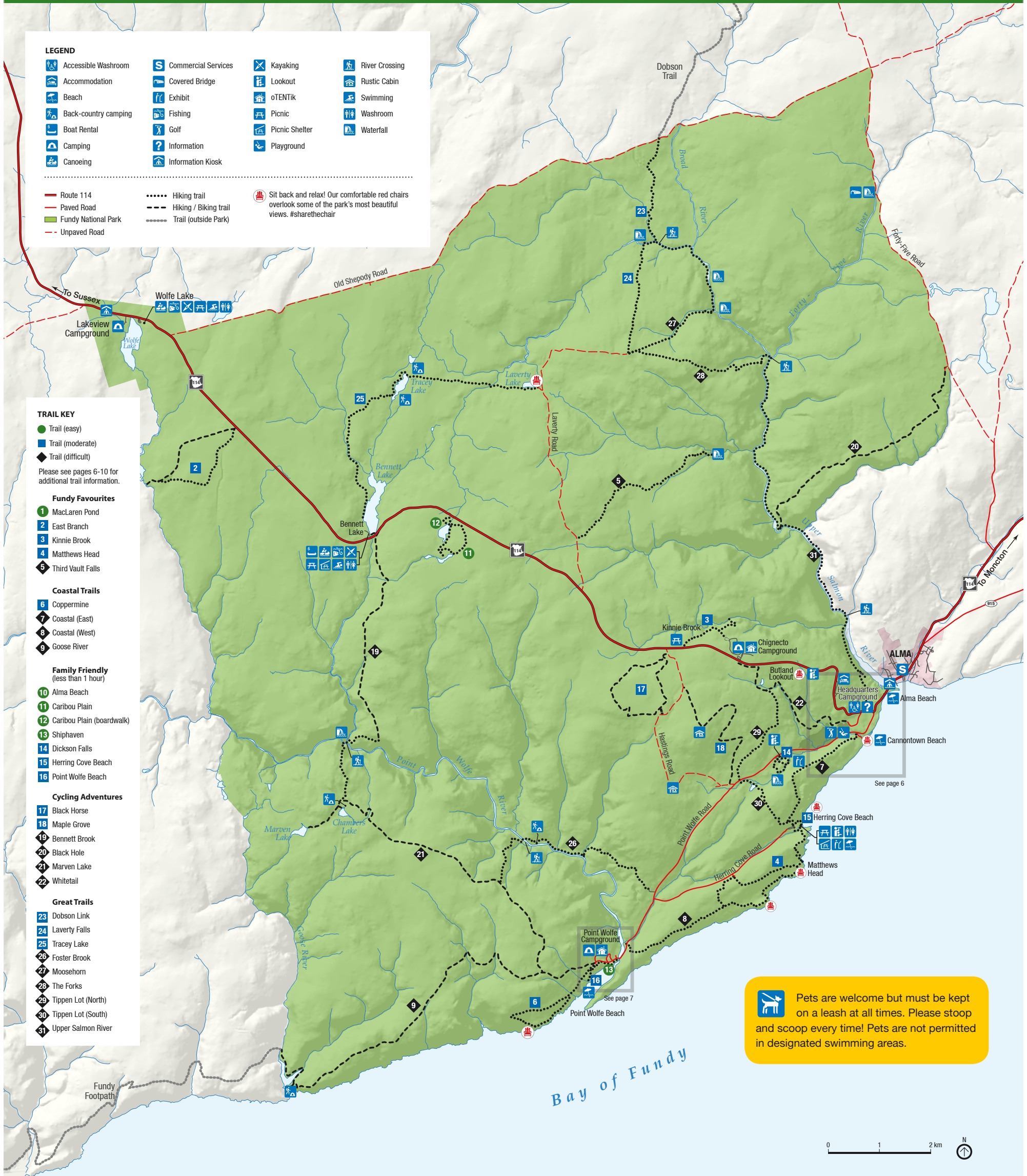
- (less than 1 hour)
- 10 Alma Beach
 - 11 Caribou Plain
 - 12 Caribou Plain (boardwalk)
 - 13 Shiphaven
 - 14 Dickson Falls
 - 15 Herring Cove Beach
 - 16 Point Wolfe Beach

Cycling Adventures

- 17 Black Horse
- 18 Maple Grove
- 19 Bennett Brook
- 20 Black Hole
- 21 Marven Lake
- 22 Whitetail

Great Trails

- 23 Dobson Link
- 24 Lavery Falls
- 25 Tracey Lake
- 26 Foster Brook
- 27 Moosehorn
- 28 The Forks
- 29 Tippen Lot (North)
- 30 Tippen Lot (South)
- 31 Upper Salmon River



Pets are welcome but must be kept on a leash at all times. Please stoop and scoop every time! Pets are not permitted in designated swimming areas.



GPS Coordinates of Visitor Information Centre: 45°35'43.475" N 64°57'2.938" W
 Emergency Services (Police, Fire, Ambulance): Dial 911
 Park Wardens 1-877-852-3100

