

The New Brunswick School of Arts and Crafts at Fundy National Park offers opportunities for you and your family to take courses in arts and crafts. The school is unusual in that all instruction is individual and you may choose one or more of a wide range of projects at times that suit your travel plans. Our school features carefully chosen projects, for adults and for children, many of which can be completed in one day.

You and your whole family may register for one day or for as many days as you wish. While advance registration assures you of teaching space before you come, it is not essential. Teaching space must be taken up by 9:30 a.m. on the day assigned or it will become available to another person.

The school has a new campus in a spruce woods on a rocky bluff above the Bay of Fundy. All buildings are new, modern in design, one for each craft instructor.

The charge for any project is the cost of materials used plus \$1.00 a day tuition for adults, 50 cents a day for children. 1960 dates are July 11 to August 26, inclusive. Teaching is Monday to Friday, 9 a.m. to 12 noon and 1:30 to 5:00 p.m.

For further information, write

**NEW BRUNSWICK TRAVEL BUREAU**

FREDERICTON, NEW BRUNSWICK, CANADA

HON. D. D. PATTERSON,  
Provincial Secretary-Treasurer

R. A. TWEEDIE,  
Director

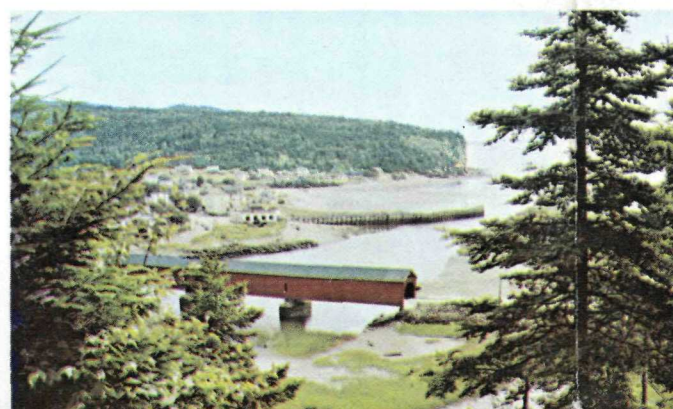
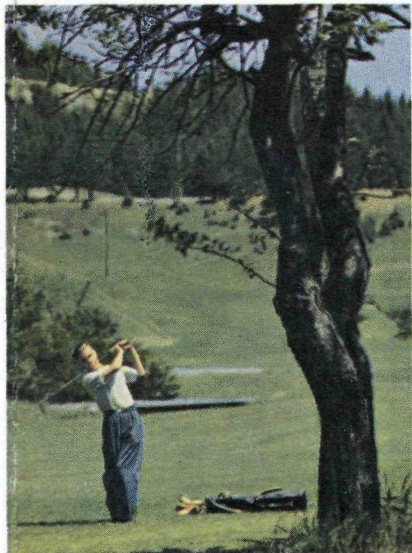


# FUNDY

*National*

# PARK

ALMA - NEW BRUNSWICK - CANADA



# FUNDY

*National*

# PARK

ALMA - NEW BRUNSWICK - CANADA



Rosemary Keenan,  
New Brunswick's Own Miss Canada 1960  
At Fundy National Park.



# New Brunswick



*Canada's Picture Province*

*Invites you  
to*



*Fine picnic tables and ample parking and tenting space highlight all of New Brunswick's camping and picnic sites.*

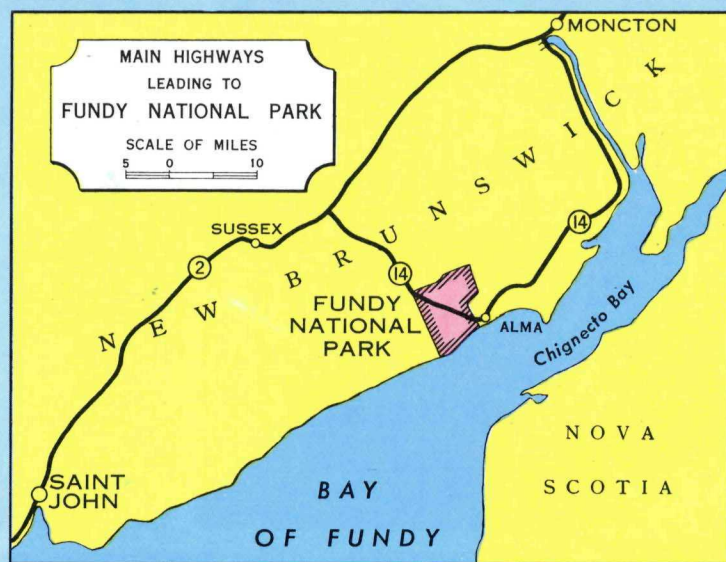
You can reach the Park through the gentle rolling hills of Route 2, along the St. John River Valley. Route 11 leads from the Quebec border at Matapedia down the east coast and into Moncton. From here, an hour's drive along scenic Route 14 puts the visitor into Fundy National Park. En route from Moncton he'll see the unusual rock formations at Hopewell Cape and the unexcelled view of Crooked Creek lookout, near Albert. From the Nova Scotia border, Routes 2 and 14 lead through Moncton to the Park. From the Maine border at St. Stephen, Route 1 leads the visitor along the Fundy coast to Saint John. From here, 56 miles driving on Route 2 takes the visitor beyond Sussex to Penobscis and the Junction of Route 14 leading through the verdant hills to the Park's headquarters area.

Along all these routes, there's scenery unexcelled and fine accommodation to cater to the visitor's needs. A helpful "Where To Stay" booklet can be obtained by writing the New Brunswick Travel Bureau, Fredericton, N.B., Canada.

## Fundy Park







Fundy National Park is situated in southeastern New Brunswick on the Bay of Fundy. The park extends about 8 miles along the coast and 9 miles inland and covers approximately 80 square miles. It can be reached by turning off the main highway (Route 2) about 10 miles east of Sussex onto Route 14. This highway will take you south through the park to the coast and to Alma, N.B. Route 14 leaves the park by the southeast corner, passing Hopewell Rocks, and follows north along the Petitcodiac River to Moncton.

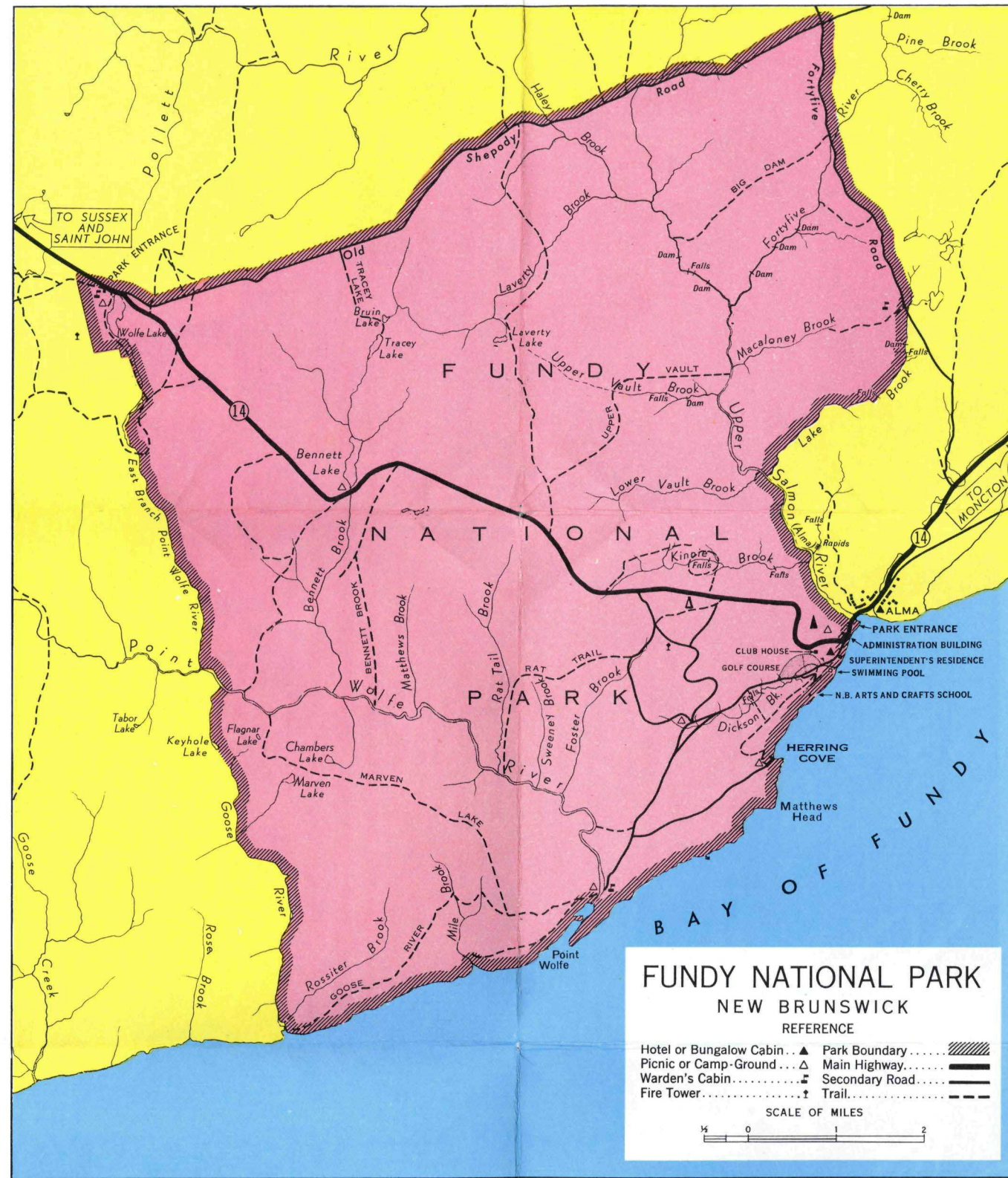
### CAMPING

The most attractive feature of the park is its camping areas. These, coupled with the picnic grounds situated throughout the area make Fundy National park a 'must stop' for both transients and the camper interested in staying a week or more. The latter may make use of the tenting and trailer sites, at the same time enjoying the golfing and swimming, or perhaps taking a course in leathercraft or some other handicraft.

Tenting and trailer areas have kitchen shelters, stoves, running water, firewood, sanitation conveniences and laundry facilities.

### GOLF

Within sight of the Bay of Fundy lies the park's nine hole golf course. The course boasts enough natural water hazards to please the most ardent devotee of the game. However, if you are a casual golfer you will be more than pleased with the setting of the greens. They overlook breathtaking views of the Bay of Fundy and Shepody Basin. The course also offers club room facilities, dressing rooms, showers and a dining room.



**FUNDY NATIONAL PARK**  
NEW BRUNSWICK  
REFERENCE  
Hotel or Bungalow Cabin . . . ▲ Park Boundary . . .   
Picnic or Camp-Ground . . . △ Main Highway . . .   
Warden's Cabin . . . □ Secondary Road . . .   
Fire Tower . . . ↑ Trail . . .   
SCALE OF MILES  
0 1 2

PREPARED AT THE SURVEYS AND MAPPING BRANCH, OTTAWA, CANADA.

### BOATING AND ANGLING

For those interested in rowing, boats may be rented at either Bennett Lake or Wolfe Lake. Rowboats are also available to anglers. No license is required to fish waters within the boundaries of the park. Open season on Trout and Salmon extends from June 1 to September 15.

### SWIMMING

A warmed salt water pool has been constructed for the use of park visitors. Dressing rooms are maintained, towels

and bathing suits may be rented in the park. Life guards are always on duty.

### TENNIS AND LAWN BOWLING

There are clay tennis courts near the golf course for the use of tourists and park visitors and a well maintained bowling green in the same area.

### PLAYGROUNDS

There are several areas for ball games and track and field sports near the park headquarters, likewise a well equipped playground for children.

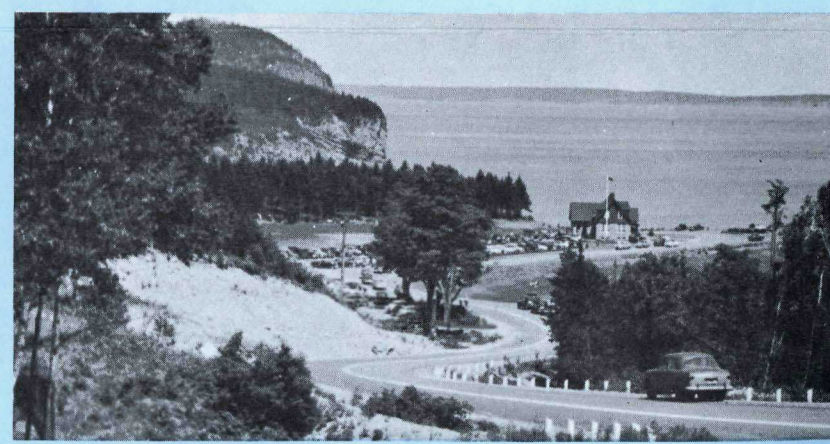
### ACCOMMODATIONS

**FUNDY VIEW MOTEL.** New 20 unit motel located in Fundy Park. Each unit has double bed, 2 bunk beds, dresser, kitchenette with combination refrigerator and stove, table and chairs, 2 easy chairs, reading lamp, toilet and shower. Also one large apartment with 2 double beds in each of 2 large bedrooms. Living room with chesterfield and chairs, fully equipped kitchenette, all linen supplied for standard motel unit or apartment. Rates: Motel Units: One or two adults, \$9.00; each additional adult \$2.00; each child (under 12 years) \$1.00. Apartment rates: four adults \$15.00; each additional adult \$2.00; each child (under 12 years) \$1.00. No weekly rates. 1960 season—May 23 to October 1. For reservations write: The Concessionaires, Fundy View Motel, Alma, Albert County, N.B.

**ALPINE CHALETS.** Twenty-four new modern chalets. Housekeeping chalets have a bed-sitting room with two double beds and all the necessary accessories. Bath. Kitchenette equipped with refrigerator and stove, cutlery, dishes, cooking utensils. Rates per day: \$9.00 two adults, each additional adult \$2.00; children under 12 years \$1.00. Chalets without housekeeping facilities have two separate bedrooms, heated, automatic hot and cold water, shower and toilet. Maid service and linens supplied. Rates: \$8.00 two adults, each additional adult \$1.50; children under 12 years \$1.00. No weekly rates. Reservations from November 1st to May 1st, write c/o Windsor Hotel, Moncton, N.B. Phone 4-4433. One day's rent with your reservation shall be credited to your account. This deposit will be refunded providing we are given one day's notice of cancellation.

**FUNDY PARK CHALETS.** Twenty-nine heated cottages, complete with shower baths and central refrigeration with a locker for each unit. 22 with fully equipped kitchenettes and bed-sitting room with two bungalow beds. 7 cottages without kitchenettes each containing two bedrooms. Rates: \$8.00 per day for one or two persons; \$10.00 per day for three adults; \$12.00 per day for four adults. Children 12 years of age and under, \$1.00 each. 1960 season—June 1 to September 30. Advance reservations by correspondence only to Fundy Park Chalets, Alma, Albert County, N.B. Telephone: Albert Exchange 8029.

Additional accommodations are available in the village of Alma adjoining the Park.



### HIKING AND PHOTOGRAPHY

You may hike along the numerous trails in the park and if you are an amateur photographer or a painter you have a world of material to interest you.

If you want a healthful rest in the open air, Fundy National Park is the place for you!