



Fundy
National Park

Parc national
Fundy

Salt & Fir

2018 Visitor Guide



**Map
Inside**



Parks
Canada

Parcs
Canada

Canada

How to Reach Us

Fundy National Park
8642 Highway # 114
Fundy National Park, NB
E4H 4V2

GPS Coordinates: Latitude/Longitude
North 45°35'47.3" & West 064°57'07.6"

Tel: 506-887-6000
Fax: 506-887-6008
Email: fundy.info@pc.gc.ca
www.pc.gc.ca/fundy

Parks Canada Reservation Service
1-877-737-3783
www.reservation.pc.gc.ca

Follow us



FundyNP



@FundyNP



Parks.Canada

Emergency Numbers

Police, fire, ambulance: 911
Parks Canada visitor safety emergencies:
1-877-852-3100

Medical Centres and Services

First aid: visit any campground kiosk or
visitor centre
Tele-care (free confidential health advice)
1-800-244-8353
Albert County Health and Wellness Centre
(506) 882-3100
Sussex Health Centre
(506) 432-3100
Pharmacy, Riverside-Albert
(506) 882-2226

FSC LOGO HERE



Welcome to Fundy National Park

For 2018 we are excited to announce free entry for children and youth (those ages 17 and under) to Canada's National Parks, National Historic Sites and National Marine Conservation Areas. This change will make it easier for the next generation to be able to connect with Parks Canada's places; 450 000 km² of memories!

Ensuring that Canada's children and youth have an opportunity to connect with these protected natural and cultural heritage places supports Canada Target 1:

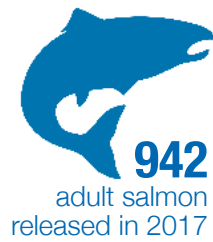
By 2020, at least 17% of terrestrial areas and inland water, and 10% of marine and coastal areas of Canada are conserved through networks of protected areas and other effective area-based measures.

Studies show that people who visit Parks Canada places are more likely to contribute to their protection. Connecting Canadians to our places through visitation is therefore a key step in creating a new generation of Parks Canada enthusiasts and stewards for protected areas.

On a more local-scale, we are happy to announce the opening of the Chignecto Recreation Area; a former campground that has been repurposed to create a destination for sustainable outdoor adventure. We are also pleased to welcome Outdoor Elements as the new outfitter for Fundy National Park, providing cycling, camping and aquatic equipment rentals to visitors; never before has it been so easy to discover Fundy's wilderness! Finally, be sure to visit the Friends of Fundy's renewed and expanded gift shop, "The Outpost" located within our East and West Gate visitor centres; note that all proceeds from the activities of the Friends of Fundy are used to support programs and events in Fundy National Park and in the surrounding communities, including events such as the Rising Tide Festival!

As you leave Fundy National Park, either to the east or to the west, please be sure to continue to explore the Fundy Coast region and discover a landscape and a culture which has been shaped by the world famous Bay of Fundy tides.

The Fundy National Park team



Fundy Facts

- 1** saltwater swimming pool
- 2** covered bridges
- 4** campgrounds with **550+** campsites
- 5** waterfall trails
- 8** backcountry campsites
- 9 to 12**-metre tides, twice a day
- 15+** special events
- 300,000+** annual visitors



Why Salt and Fir?

Writer Maimie Steeves, a former resident of Point Wolfe Village, coined the expression “people of the salt and the fir” to describe her people and their history with the sea and the forest. We borrow it for the name of this guide to honour all things that bind us to the Earth.

Contents

- 2 Top 10 Hidden Gems
- 3 Festivals and Events
- 4-5 Stay Overnight
- 6-7 Guided Experiences
- 8-9 Trails
- 10-11 Fundy National Park Map
- 12 Headquarters Area
- 13 Point Wolfe Area
- 14 Chignecto Recreation Area
- 15 More to Discover
- 16 Protecting Fundy
- 17 Safety First
- 18 Friends of Fundy
- 19 Animal Watching
- 20 Village of Alma
- 21 A Natural Splendour
- 22 Tide Schedule

Headquarters Visitor Reception Centre Hours

May 18 – June 21
8 am – 7:45 pm

June 22 – Sept 3
8 am – 9:45 pm

Sept 4 – Oct 29
8 am – 7:45 pm

Wolfe Lake Visitor Reception Centre Hours

May 18 – June 21
8 am to 7:45 pm

June 22 – Sept 3
8 am to 9:45 pm

Sept 4 – Oct 8
8 am to 7:45 pm

Fundy's Top 10 Hidden Gems

1

New for 2018 — Plan your Fundy National Park adventure at the **newly revitalized Wolfe Lake Visitor Reception Centre**. Make a pit stop on your way through or spend the day exploring the lake. Be sure to check out the Friends of Fundy's newest shop, Outpost West.

2

Picnic and play — Discover an endless amount of creative fun at the natural playground outside the Salt and Fir Centre. Bring a lunch and let your imagination run wild!

3

Rustic retreat — Ever dream of overnighting in a little cabin in the woods, away from it all? No matter what the time of year, an overnight in a Fundy Rustic Cabin is just what you need.

4

Meet Parka — Take an evening stroll along the MacLaren Pond trail and meet Fundy National Park's own family of beavers. Be sure to keep your distance and give these busy beavers space.

5

Bird watchers' paradise — In the morning or evening, when the forest is quiet, take a walk on the Kinnie Brook trail. This trail passes through a variety of ecosystems making this an ideal spot to see or hear many species of birds.

6

Underwater world — The Bay of Fundy is home to the highest tides in the world making Alma Beach, at low tide, the perfect place to investigate what usually lies in the deep. Explore the intertidal zone of Alma Beach and see what kinds of creatures turn up.

7

Star light, star bright — Set up a blanket, at dusk, on the lawn across from MacLaren Pond. Watch the sun go down and start counting stars as they appear in the night sky.

8

Cycling adventures — New for 2018 - Explore Fundy on two wheels at the Chignecto Recreation Area. Try out the pumptrack or just take it easy. This amazing network of trails is a cyclist's dream. No bike? Fundy's newest adventure outfitter, Outdoor Elements, has got you covered.

9

Events for everyone — The Fundy Mawew in early August, is one of the many specials events being held in Fundy this season. We've got something for the entire family.

10

Winter wonderland — Fundy National Park is a great spot for a winter snowshoe, ski or even fatbike. Spend the night cozied up in a yurt or oTENTik. For the more adventurous, venture out for a night in a rustic cabin.



Festivals and Events

At Fundy National Park, we have many, many reasons to celebrate — and we love to celebrate with new and old friends! Join us for one of our festivals or events and you'll find your own reason to love this place! Check out the list of events posted on bulletin boards throughout the Park and available at all visitor facilities.



June 30, July 7, 14, 21, 28, August 4, 11, 25

Sounds of Summer Concert Series The sweet, salty air is full of the sounds of summer: crickets, waves rolling on the beach, a campfire crackling in the distance, and some of the finest music the Maritimes has to offer!

May 19

Fundy Geocaching and Orienteering Weekend Our annual geocaching and orienteering event draws enthusiasts, young and old, beginner to advanced.

June 2

International Trails Day Celebration Join us for a day dedicated to celebrate trails, their development, uses and the healthy lifestyle they encourage.

June 29 - July 2

Canada Day Weekend and Alma Celebration Days Happy Birthday Canada! The Village of Alma and Fundy National Park have a weekend of festivities for all to enjoy.

July 21

Parks Day Join us and thousands of people right across the country to celebrate our system of National Parks and National Historic Sites

August 5

Fundy Mawew Come join us for a celebration of New Brunswick's Mi'gmaq culture! Musical performances, dancing and culturally inspired foods.

August 17-18-19

Rising Tide Festival Each year we bring together musicians, artists, and nature in this extraordinary setting. Join us for the weekend to enjoy one of the best summer festivities the east coast has to offer.



August 31st and September 1st

Fundy Star Party Astronomy made easy! Fundy National Park is a Dark Sky Preserve, making it one of the best places in Canada to view the night sky.

September 8-9

69th Annual Fundy Open Golf Tournament Attention golfers! Challenge your friends and family at Fundy National Park's annual Par 70 golf tournament. Stay the weekend and participate in New Brunswick's longest running golf tournament.

September 22

Fundy Circuit Ultra Marathon

Attention all trail runners and adventure seekers! Join us at Fundy National Park for an awesome trail run event that will take you along the world renowned Fundy Coast and through some of the most rugged terrain in Atlantic Canada.

October 6-14

Fundy Bike Fest Join us for a celebration of the Fundy Coast Region's mountain biking culture. Activities for all ages and skill level.

October 6-7

Thanksgiving Weekend & the Fundy Pumpkin Festival Put a Fundy spin on your family's favourite fall tradition! Join us for this fun-filled weekend and our annual pumpkin carving contest; winners will be announced at the Saturday evening campfire program and prizes will be awarded.

October 27

Haunted Hike Don't be afraid! Join us as we lead groups through the mysterious forest to encounter spooky characters with a story to share.



Stay Overnight



Whether you prefer to camp in a tent, in a trailer, travel to a wilderness site or stay in one of our cabins, yurts or oTENTiks, we have the experience to suit your needs!



Frontcountry Camping

Chignecto North Campground

This large, wooded campground is a great place for families looking for active, outdoor adventure as it is close to hiking and biking trails, and playgrounds.



Cannontown Campground

Ideal for camper style travellers! All sites are fully serviced and have their own fire pit. The campground is conveniently located beside the golf course and Salt & Fir Centre. Solar-heated salt water swimming pool is just a short walk away.



Headquarters Campground

Within walking distance of the Village of Alma and the beach, this campground offers great views of the Bay of Fundy and access to all the services and facilities in the headquarters area.



Point Wolfe Campground

Point Wolfe is in the heart of some of Fundy's most spectacular coastal wilderness. (Note: vehicles longer than 7.5 m and 4.4 m high cannot cross the covered bridge)



Lakeview Campground

Formally known as Wolfe Lake, this small secluded campground will be undergoing upgrades during the 2018 season. Please stay tuned for details on its availability.



Backcountry Camping

For those looking to experience Fundy National Park's wilderness, nothing beats a backcountry camping trip. Try camping at Goose River, Tracey Lake, Marven-Chambers Lake, or Foster Brook. A backcountry permit is required for all overnight backcountry visits. Fees apply.



Diversified Accommodation

1 Rustic Cabins

From the vantage point of your private deck, soak in splendid views of the Bay of Fundy and the Acadian Forest.

2 Yurts

Experience Fundy like never before. A perfect blend of comfort and outdoor adventure. Yurts are located in Headquarters Campground.

3 oTENTiks

Part tent, part cabin, our oTENTiks offer the ultimate hassle-free experience. oTENTiks are available in Chignecto North, Headquarters, and Point Wolfe campgrounds.

4 Goutte d'Ô

Looking for something new? Try the Goutte d'Ô located in Point Wolfe Campground.

Reservations

To make sure you have the site you want when you arrive, reservations can be made by calling the Parks Canada Reservations Service 1-877-737-7383 or by visiting www.reservation.pc.gc.ca.



Experiences with Park Interpreters and Local Guides

Fundy National Park's interpreters and local partners are passionate about sharing their knowledge and love for this special place. Come and discover one of the many adventures they have prepared for you.

Incredible Edible & Medicinal Forest

Join us to discover the sights, sounds, smells and flavours of a landscape shaped by the Bay of Fundy. A park interpreter will help you discover many edible and medicinal plants found within the forests of the Fundy coast. Immerse yourself in nature as you discover the bounty of the forest and learn some traditional knowledge about medicinal plants in Fundy National Park.

Guided Beach Explorations

Come explore the bottom of the sea. Experience the expanse of the towering tides of the Bay of Fundy and meet unusual creatures. Discover a whole new world beneath your feet as you explore the ocean floor.

Indigenous Experiences

From traditional arts & crafts to sharing the rich oral history through storytelling, join our interpreters and Indigenous partners throughout the season to learn more on the culture and heritage of Indigenous Peoples of New Brunswick and areas around the Bay of Fundy.



(6 to 11 years old)

Discover and explore! Get your Fundy Xplorers booklet at the Visitor Centre and begin your journey through Fundy National Park. Finished level 1? Why not try levels 2-7?



(6 years old and younger)

Join Parka and Chirp on a photo scavenger hunt to explore Fundy National Park. Download the app and complete the mission. (This free app for smart phones is available in Apple Store and Google Play).

Club Parka

(6 years old and younger)

Explore, discover, learn and have fun with Parka! Get your booklet at the Visitor Centre. It includes self-guided activities and Parka's story. Complete the booklet and obtain a reward.



© New Brunswick Tourism / B. Aikman

Molly Kool Kitchen Parties

You are invited to a family friendly kitchen party full of songs, stories and dancing. Born and raised in the village of Alma, Molly Kool was North America's first female sea captain. Joins us for an entertaining and engaging evening to discover the story of this fascinating person and this captivating place!

Swim with Salmon

Want to feel the rush of seeing an endangered species? Or maybe explore the mysterious Fundy National Park back country? Find a new perspective by embarking on the adventure of a lifetime.



© Parks Canada / M. Graham



iNaturalist BioBlitz

Discover some of Fundy's most important and fascinating insect species. Fun-filled hands-on activity for the whole family! Includes an intro to a great "app" for adding your own observations, wherever your travels may take you.



Campfire Programs

Finish your day with one of Fundy's legendary evening campfires. Join us for songs, stories, laughter and a cheery blaze. Don't forget a mug for something warm!

Exhibits

Have a few minutes? Our interpreters are often stationed throughout the park with fascinating Fundy facts and stories to share.

For detailed programming of all activities, **pick up a schedule** at the Visitor Centre, a park kiosk or you can also **check the bulletin boards** throughout the park.

Dark Sky Discovery

When the sun sets on Fundy National Park, the sky comes alive! Designated a Dark Sky Preserve, Fundy is home to some of the darkest skies in Canada. Join our interpreters for a guided tour of the night sky.



*Some of these activities require an additional fee, please enquire at the visitor centre or check our schedule to learn more.

Trails

Whether by bicycle or on foot, our trails provide you with access to Fundy National Park's most amazing places; plunging waterfalls, secluded beaches and breathtaking coastal cliffs. With over 100 km of trails ranging from short, accessible boardwalks to multi-day adventures, you will find a trail that is just right for you!



Trail tips!

Make the most of your experience! Pick a trail that best matches your interests, abilities, and experience.

Easy Family-friendly trails that are suitable for all visitors.

Moderate Medium-length trails with moderate elevation gain and some short, steep sections. Suitable for most visitors.

Difficult Longer trails with long, steep sections that are suitable for visitors who have trail experience and are prepared.

- Hike with friends. If you are alone, tell someone where you are going and when you'll be back.
- Be careful not to disturb wildlife and their habitats. Stay on the trail at all times.
- Check the weather.
- Dress appropriately. Coastal breezes can be cool even when the forests are warm.
- Take along food and water.
- Wear footwear with good traction and support.
- Leave plants and other natural objects for others to enjoy.
- Please carry out all garbage, yours and any you may find on the trail.
- **CAUTION:** Cell phone coverage is not available everywhere in the park.
- For more tips, check out: Get Informed + Go Outdoors, www.adventuresmart.ca

Key to Trail Symbols

- Backcountry Camping
- Beach Access
- Hiking
- Interpretive Exhibit
- Lookout
- Mountain Biking
- River Crossing
- Universal Access
- Washroom at trail head
- Waterfall
- TransCanada Trail

Drinking water: Assume all surface water is unfit to drink unless treated properly.

Multi-day hiking experiences

Looking for a more challenging adventure in and around Fundy National Park? Try one of our multi-day hiking experiences!

The Fundy Circuit connects 48-kilometers of trails to form a loop within Fundy National Park to showcase the very best of our river valleys, lakes, coastal forests and beaches.

The Dobson Trail is a continuous footpath through upland wilderness stretching 58 km from the northern boundary of Fundy National Park to Riverview NB (near Moncton).

The Fundy Footpath is a continuous trail that follows the Fundy coastline for 41 km from Goose River in Fundy National Park to the Big Salmon River near St. Martins, NB.

New for 2018 Looking for more trails to explore? Check out the newly revitalized **Chignecto Recreation Area** on page 14.



Fundy National Park Trail System

*See additional trail information for the Chignecto Recreation Area on page 14

	TRAIL NAME (#)	FEATURES	DISTANCE / EST. TIME	SPECIAL FEATURES	
EASY	Alma Beach (10)		100 metres, 10 min.	Beach access. Tidal viewing point.	
	Caribou Plain (11)		2.1 km loop, 1-1.5 hrs	Carnivorous bog plants. Beaver ponds.	
	Caribou Plain (12)		0.5 km loop, 15 min.	Boardwalk	
	MacLaren Pond (1)		0.4 km loop, 15 min.	Indigenous medicine trail. Frogs and beavers.	
	Shiphaven (13)		1 km return trip, 30 min.	Magnificent estuary views. Covered bridge.	
MODERATE	Black Horse (17)		4.4 km loop, 1.5-2 hrs	Former homestead foundations. View of Bay.	
	Coppermine (6)		4.4 km loop, 1.5-2 hrs	Old mine site. Great coastal views.	
	Dickson Falls (14)		1.5 km loop, 30-45 min.	Boardwalk and stairs. Tumbling cascades.	
	Dobson Link (23)		2.6 km one way, 1-1.5 hrs	Forest fire regeneration.	
	East Branch (2)		5.6 km loop, 2-2.5 hrs	Giant birch and spruce. Old logging dam.	
	Herring Cove Beach (15)		1.0 km return trip, 30 min	Beach access. Stairs	
	Kinnie Brook (3)		2.8 km return trip, 1.5 hrs	Steep walled valley. Disappearing stream.	
	Laverty Falls (24)		2.5 km one way, 1-1.5 hrs	Curtain waterfall. Swimming hole.	
	Maple Grove (18)		4.5 km one way, 1.5-2 hrs	Open hardwood forest. Beautiful fall colours.	
	Matthews Head (4)		4.5 km loop, 1.5-2 hrs	Great coastal views. Sea stack.	
	Point Wolfe Beach (16)		1 km return trip, 30 min	Beach access. Towering red spruce.	
	Tracey Lake (25)		7 km one way, 2.5-3 hrs	Trail can be wet. Moose and pitcher plants.	
	DIFFICULT	Bennett Brook (19)		13 km return trip, 5-6 hrs	Dam and fishway. Steep switchback climbs.
		Black Hole (20)		5.5 km one way, 2 hrs	Salmon pools. Steep descent to river.
Coastal East (7)			3 km one way, 2 hrs	Ridge top views. Fern glades, lush forests.	
Coastal West (8)			6.7 km one way, 2.5-3 hrs	Steep sections. Coastal views.	
Foster Brook (26)			4.4 km one way, 1.5-2 hrs	Shaded forest. Unique backcountry camping.	
Goose River (9)			8 km one way, 2.5-3 hrs	Spectacular backcountry camping.	
Marven Lake (21)			8.5 km one way, 2.5-3 hrs	Home to trout, bullfrogs, moose and beaver.	
Moosehorn (27)			4.5 km one way, 2-3 hrs	Steep descent and return. Great picnicking.	
The Forks (28)			3.2 km one way, 1.5-2 hrs	Steep descent and return. Deep pools.	
Third Vault Falls (5)			7.4 km return trip 3-4 hrs	Park's highest waterfall (16 m).	
Tippen Lot North (29)			3 km one way, 1.5-2 hrs	Beech grove.	
Tippen Lot South (30)			1.85 km one way, 1.5-2 hrs	Old beaver pond. Panoramic view of forest.	
Upper Salmon River (31)			8.2 km one way, 3.5-4 hrs	Salmon pools. Rapids and river crossing.	
Whitetail (22)			5.7 km one way, 2-2.5 hrs	Mountain biking. Several small brook crossings.	

Fundy National Park's Trail System

- LEGEND**
- | | | | | |
|----------------------|---------------------|-------------------|-----------------|-------------------|
| Accessible | Camping | Fishing | Lookout | Rustic Cabin |
| Accessible Washroom | Campfire Circle | Gift Shop | Mountain Biking | Salt & Fir Centre |
| Accommodation | Canoeing | Golf | oTENTik | Swimming |
| Amphitheatre | Chignecto Pavilion | Goutte d'O | Outhouse | Washroom |
| Beach | Commercial Services | Hiking | Picnic | Waterfall |
| Back-country camping | Covered Bridge | Information | Picnic Shelter | Wifi |
| Bicycle Rental | Drinking Water | Information Kiosk | Playground | Yurt |
| Boat Rental | Exhibit | Kayaking | River Crossing | |

- Fundy National Park
 Unpaved Road
 Hiking / Biking trail
 Route 114
 Hiking trail
 Trail (outside Park)
 Sit back and relax! Our comfortable red chairs overlook some of the park's most beautiful views. #sharethechair

- TRAIL KEY**
- Easy
 - Moderate
 - Difficult
- Please see pages 12-14 for additional trail information.

Fundy Favourites

- MacLaren Pond
- East Branch
- Kinnie Brook
- Matthews Head
- Third Vault Falls

Coastal Trails

- Coppermine
- Coastal (East)
- Coastal (West)
- Goose River

Family Friendly

(less than 1 hour)

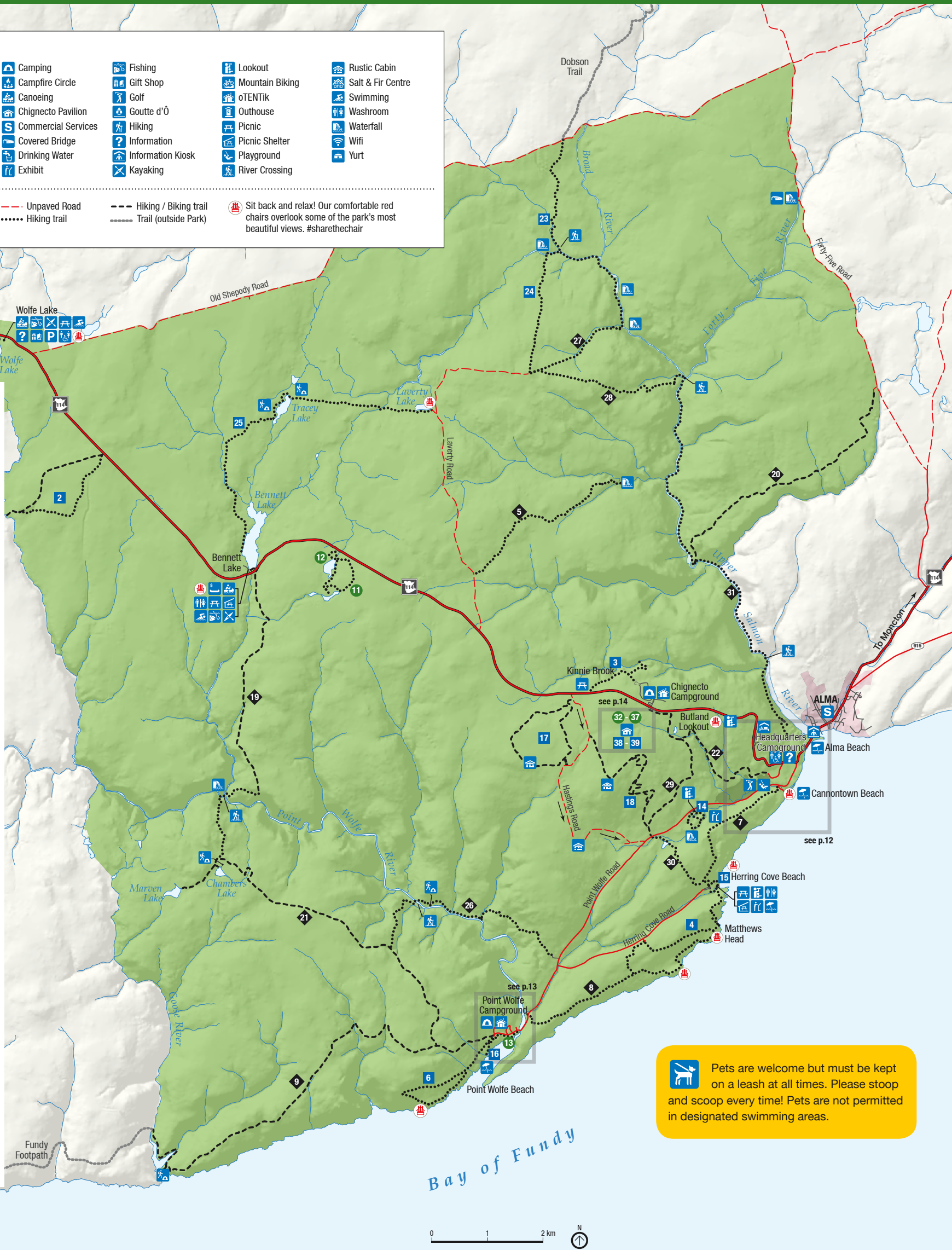
- Alma Beach
- Caribou Plain
- Caribou Plain (boardwalk)
- Shiphaven
- Dickson Falls
- Herring Cove Beach
- Point Wolfe Beach
- Cygnus
- Cassiopeia
- Lyra
- Ursa Major
- Ursa Minor
- Orion

Cycling Adventures

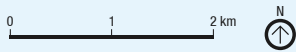
- Black Horse
- Maple Grove
- Bennett Brook
- Black Hole
- Marven Lake
- Whitetail
- Tippen Lot (North)
- Peregrine
- Pumptrack

Great Trails

- Dobson Link
- Laverly Falls
- Tracey Lake
- Foster Brook
- Moosehorn
- The Forks
- Tippen Lot (South)
- Upper Salmon River



Pets are welcome but must be kept on a leash at all times. Please stoop and scoop every time! Pets are not permitted in designated swimming areas.



GPS Coordinates of Visitor Information Centre: 45°35'43.475" N 64°57'2.938" W
 Parking is available at the beginning of trails.
Emergency Services (Police, Fire, Ambulance): Dial 911
Park Wardens 1-877-852-3100



Headquarters Area

There's something for the entire family in the Headquarters area. Park your vehicle and explore on foot. Take a stroll on Alma Beach or challenge yourself on one of our many hiking trails. Check out the natural playground or join an interpreter to discover Fundy's many hidden secrets.



- | | | | |
|--|----------------|--|-------------------|
| | Accommodation | | Information Kiosk |
| | Amphitheatre | | Laundry |
| | ATM | | Lawn bowling |
| | Beach Access | | Lookout |
| | Bookshop | | Tentik |
| | Café | | Parking |
| | Camping | | Picnic |
| | Covered Bridge | | Playground |
| | Drinking Water | | Restaurant |
| | Exhibit | | Salt & Fir Centre |
| | Gas | | Swimming |
| | Giftshop | | Telephone |
| | Golf | | Tennis |
| | Groceries | | Washrooms |
| | Goutte d'Ô | | Wifi |
| | Information | | Yurt |

Golfing

Nestled in the Dickson Brook Valley, Fundy's beautiful 9-hole course was designed by renowned golf course architect Stanley Thompson. Challenge yourself to this par 70 course: fun for novice and experienced golfers alike. Book a tee time at (506) 887-2970 or simply drop in at the Pro Shop, near the first hole. Golf carts are available.

Swimming

Dive into our newly renovated, solar-heated saltwater pool. Located off the Point Wolfe Road, the pool now features a wading area and splash zone. Bennett and Wolfe lakes are the ideal spot to cool off on a hot summer day. Remember, swimming in one of the park's rivers can be enjoyable, but can be dangerous if you're not careful.

Pool hours July 1 - Sept 3: Daily from 11 am to 6:45 pm (last admission is at 6:30 pm)

Natural Playground

Check out our natural playground and playing fields where you can play, run, jump, or fly a kite in the breezes that blow off the bay! You can also play soccer, tennis or lawn bowling. The Golf Pro Shop has tennis and lawn bowling equipment for rent.

Salt and Fir Centre

Overlooking the beautiful Fundy Golf Course, the Salt & Fir Centre provides an excellent space to host large groups. An ideal location for weddings, family reunions, corporate meetings or any other private functions. For more information call 506-887-6000.

Village of Alma

In the quaint Village of Alma, you'll find everything you need to explore and experience the Fundy way of life through maritime hospitality, music, food, and art!

Point Wolfe Area

Discover the coastal wilderness of Point Wolfe. From the Point Wolfe campground you are within walking or biking distance to amazing experiences. Discover Fundy's past, present, and future through interpretive panels at Hueston Brook and along the Shiphaven Trail. Don't forget to venture down and explore the rugged Point Wolfe Beach.



Picnic in the Park

Point Wolfe has several spots to picnic and spend the afternoon. Some picnic areas in the park have shelters and are located near washrooms. Check with park staff to find a location that is just right for you.

Beaches

In Fundy National Park the tides measure between 9 and 12 metres in height. Point Wolfe Beach, Alma Beach, Cannontown Beach, and Herring Cove Beach are all great choices to explore and discover the tides in action. Learn more with a park interpreter and join a scheduled guided beach exploration program.

Bird Watching

From rocky shorelines to mixed forests to bogs and meadows, the diverse habitats of Fundy support a large variety of bird life. Grab your binoculars and pick up an official bird checklist at any visitor facility.



Covered Bridges

Fundy National Park is the only national park in Canada in which you can journey back in time by passing through a covered bridge.

Note: vehicles longer than 7.5 m and 4.4 m high cannot cross the covered bridges.

Lookouts

Take in the view of the Point Wolfe estuary from the Shiphaven Trail or hike along the Coastal or Coppermine trails for breathtaking coastal vistas. Along Route 114, Butland Lookout offers a panoramic view of the Bay of Fundy.

Chignecto Recreation Area

New! Activity hub adjacent to Chignecto Campground. A variety of family-friendly, short and easy trails for mountain biking and hiking are developed for your enjoyment. The recreation area includes bicycle skill development loop commonly known as Pumptrack, where cyclists ride around different banks and turns. Excellent for learning the basics as well as for training like pros!

The Chignecto Pavillion has ample parking and is centrally located.



	TRAIL NAME (#)	FEATURES	DISTANCE / EST. TIME
EASY	Cygnus (32)		1.5 km one way, 15-20 min
	Cassiopeia (33)		0.6 km one way, 15 min
	Lyra (34)		0.3 km one way, 5 min
	Ursa Major (35)		1 km one way, 15-20 min
	Ursa Minor (36)		0.7 km one way, 15 min
	Orion (37)		1 km one way, 15-20 min
	MOD.	Peregrine (38)	
Pumptrack (39)			106.5 m and 141.6 m loops

- Accessible Shower
- Accessible Washroom
- Bicycle Rental
- Campfire Circle
- Chignecto Pavillion
- Hiking
- Mountain Biking
- Parking
- Picnic Shelter



Mountain Biking
Fundy's landscape offers trails that appeal to bicyclists of every level, from flat and forested trails for family outings to exciting ravines where you can challenge friends.

Trails that are used for cycling are shared with hikers so please yield to pedestrians when travelling these trails. Don't forget your helmet.

Discover — Explore — Experience!



Outdoor Elements is your official adventure outfitter for Fundy National Park. Kayaks, canoes and paddle boards are for rent. As well, some basic accessories and convenience items are for sale at Bennett Lake. Mountain bike rentals and repairs are conveniently located near the new mountain bike trails at the Chignecto Recreation Area. For day hikes or overnight backpacking excursions, backpacking equipment & accessories are available for rent and for sale. Feel free to contact us for more information: (506) 433-3060 info@outdoorelements.ca



Geocaching

Ready for a treasure hunt? Use a GPS to find hidden containers known as caches or geocaches. To uncover Fundy's geocaches find the coordinates at www.geocaching.com.

If you do not own a GPS device, the Fundy Guild rents GPS units at their boutique located at the Visitor Reception Centre.

Fishing

Bennett Lake is open to brook trout fishing from May 20 to September 16. Wolfe Lake is open from June 6 to September 16. A National Park fishing permit is required and can be obtained from most visitor facilities.



Paddling

Experience a different view of the park by paddling the shores of our tranquil lakes or rugged coast.

One of the best ways to explore the Bay of Fundy is to travel ON the bay! Visit our local kayak guides to see how you can experience the bay first hand!

Bennett and Wolfe lakes are open for paddling. During the summer months, canoe and kayak rentals are available for use on Bennett Lake.

Universal Access

- Visitor Reception Centres
- Headquarters and Chignecto Campground
- Boardwalks and viewpoints at Alma Beach, Butland Lookout, Caribou Plain, Dickson Falls, and Point Wolfe
- Swimming pool
- Salt & Fir Centre



Protecting Fundy

Check out how we are protecting Fundy National Park's wilderness!



© Parks Canada / N. Faron



2

© Parks Canada / D. Jovet



3

© Parks Canada / S. Billiam

Ecological Integrity Monitoring

Ecological Monitoring is like taking the pulse of the ecosystem. Similar to a regular doctor's check-up, we measure a few key things to determine if the environment is doing well, or if there is a particular condition needing more attention.

- 1 Measuring water quality helps us protect the Inner Bay of Fundy Atlantic Salmon.
- 2 Recording when frogs start singing in the spring, helps monitor seasonal change.
- 3 Moose populations are studied to help understand forest health.

Building sustainable trails

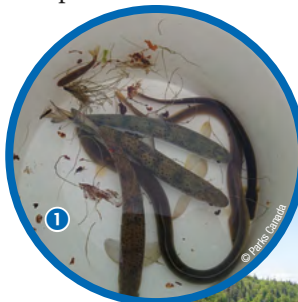
Trails are an integral part of the Fundy experience as they are the pathway to connect visitors with the natural world we are protecting. Fundy continues to invest in the development of trails which are designed and built to maximize visitor's enjoyment while minimizing the impact on the surrounding landscape. A major restoration and re-alignment project will be continuing in 2018 in an effort to make our trails not only a way of being in nature, but a tool for health, wellness, education and ecological integrity.

Help us protect our park by staying on the trail. Let us know if you see any of these invasive plants on your hike! These pesky plants are not from around here and can cause harm to our park!

Recovering the inner Bay of Fundy Atlantic salmon

As part of a recovery team called Fundy Salmon Recovery, Parks Canada is restoring a salmon population which would otherwise be extinct.

- 1 At a young age, wild salmon are captured from their home rivers before they go out to the ocean.
- 2 The salmon are grown for about 18 months at the world's first Wild Salmon Marine Conservation Farm operated by Cooke Aquaculture on Grand Manan Island.
- 3 Mature salmon are released back into Fundy National Park rivers.



1

© Parks Canada



2

© Parks Canada / M. Faron



3

© Parks Canada / N. Faron

- 1 *Angelica sylvestris* – Woodland angelica
- 2 *Fallopia japonica* – Japanese knotweed
- 3 *Frangula alnus* – Glossy Buckthorn



1

© Parks Canada / S. Barlett



2

© Parks Canada / S. Jullien



3

© D. Macreilly



www.fundysalmonrecovery.com

Safety First

Your responsibility as a visitor:

We encourage visitors to enjoy all that the great outdoors has to offer. Take the time to learn about possible hazards that could affect your visit and exercise good judgement.

Leave it for others to enjoy

Take nothing but photos and leave nothing but your footprints.



River crossings

Several trails in the park have river crossings. Water levels are monitored and crossings are closed when water levels are high and conditions are most hazardous. At these times, signs are posted at the trailhead to indicate the closure. More information on river crossings is available at the park's Visitor Centre and kiosks. If you are unsure about water conditions or your ability to cross safely, don't take a chance. Crossing the river can be dangerous.



Fires

Campfires are only permitted in the fireplaces provided. Do not use twigs, leaves, or bark to start your fire. They act as mulch and provide food for plants. Make your own kindling from your firewood which may be purchased at the campground where fires are permitted.



Alcohol

Alcohol is not permitted in public areas (beaches, picnic areas, trails, etc). Alcohol is allowed on registered campsites only, subject to Provincial and National Park Regulations.



Protect your pets

Pets are welcome but must be kept on a leash at all times. You are required to clean up after your pet at all times. Please "stoop and scoop" and dispose of refuse in a sanitary manner.



Note: Pets are not permitted in designated swimming areas (Bennett Lake and swimming pool) and the golf course.

Follow our three-way sorting process to properly dispose of waste generated in the park during your visit. For more information please visit www.eco360.ca



Blue Bag = Recyclables:

Metals, plastics, paper, cardboard etc.



Green Bag =

Compostables: food, tea, coffee, cooking grease, dairy products etc.



Clear Bag = All other

garbage: household items like wipes, wraps, hygiene and latex/nylon based products etc.

Note: Designated receptacles for propane, butane canisters and other flammable containers are located at each campground exit.

Parks Canada emergencies

In the event of a lost person, forest fire, aggressive animal, excessive noise or disturbances, etc., call 1-877-852-3100.

Drones

Flying an unmanned aerial vehicles (UAV) or drone is illegal in a national park without an aircraft access permit.

Tick prevention

New Brunswick is home to a variety of ticks which are most active in areas of long grass or shrubbery. May-June is the period when ticks are most common but the season can be prolonged by cool, damp weather.

Lyme disease is an illness caused by the bite of infected blacklegged ticks, also known as deer ticks. It is possible to be bitten by an infected tick in New Brunswick.



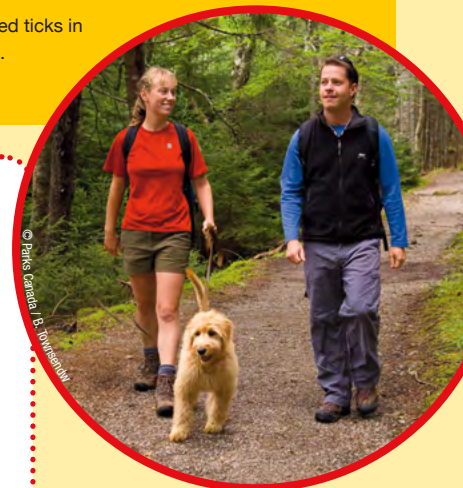
Protect yourself against ticks

Cover up: wear closed-toed shoes, long-sleeved shirts and pants.

Spray: spray feet, ankles and legs with insect repellent.

Self-check: daily self-checks of yourself, your family and your pets can reduce the risk infection. If you find an attached tick, follow the Public Health Agency of Canada's guidelines for prompt removal of the insect.

Photo: Female blacklegged ticks in various stages of feeding.
© Public Health Agency of Canada



The Friends of Fundy

The Fundy Guild is a long-time friend and partner of Fundy National Park. For over three decades we have worked together to connect visitors with nature and to learn about the greater Fundy area.



Inspirational Fundy / Fundy Guild / © Shannon Grotzki

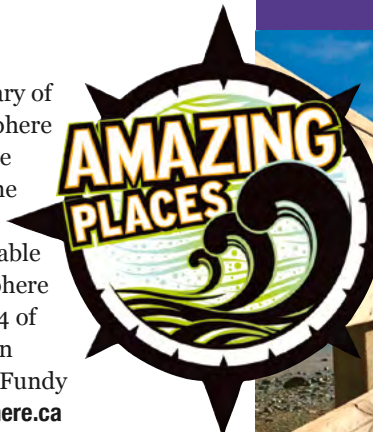
Friends of Fundy

Members of the Fundy Guild, aka 'Friends of Fundy' are visitors and locals who share a love of nature and the Park. 'Friends' are invited to all Guild-sponsored events; receive 10% discount on purchases made at both Outpost gift shops and are first to hear about special offers and opportunities to get involved in events! Come see us at the shop or drop us a note to join!

Outpost East and Outpost West are the official gift shops of Fundy National Park! When you visit, make sure to drop into Outpost East (we had a make-over!) at the Alma entrance and our newest location, Outpost West, in the Wolf Lake Visitor Reception Centre to pick up the perfect gift or souvenir. Gift shop revenues are reinvested into partnerships that increase the awareness and enjoyment of the natural and cultural heritage of Fundy National Park and its surrounding communities.

The Fundy Biosphere

We are celebrating the 10th anniversary of our UNESCO designated Fundy Biosphere Reserve. The park is at the heart of the Fundy Biosphere and together with the Friends of Fundy we work towards the region's conservation and sustainable development goals. Explore the Biosphere by hiking to the 50 Amazing Places, 14 of which are located in the Park! To learn more about our UNESCO designated Fundy Biosphere Reserve: www.fundy-biosphere.ca



Fundy Photo Contest

Back by popular demand! Enter your favourite digital image of Fundy and your photo could be posted on our website or used in next year's visitor guide. Themes for 2018:

- People in Nature
- Inspirational Fundy
- Biosphere Shutterbugs (16yrs and under)



fundyg@nbnet.nb.ca www.fundyguild.ca



People in Fundy / Fundy Guild / © Ann Murphy

Animal Watching

Watching animals in their native habitat can be a memorable part of your visit to a national park. For your safety and theirs, never approach wild animals. Practise patience, silence and treat them with respect. Don't forget to appreciate the little things! Fundy is home to small mammals, birds, frogs and even butterflies. Keep a lookout for these spectacular creatures, too.

(from top to bottom)

Moose: lakes and swamps at dawn or dusk, in particular in the area from Bennett Lake west to Wolfe Lake.

Beaver: Bennett, Laverty, and Wolfe lakes, MacLaren Pond, and Caribou Plain.

Deer: roadsides, old fields.

Coyote: roadsides; sometimes heard near Chignecto.

Raccoon: prowling around campgrounds at night looking for campers' food (please don't feed them).

Bullfrog: Bennett Lake, MacLaren Pond, and Caribou Plain.

Loon: Wolfe and Bennett lakes.

Peregrine Falcon: soaring over Alma Beach.

Shorebirds: Mary's Point (27 km east of the Park) late July and August, Upper Salmon River Estuary.

Birds of the northern forest: Caribou Plain, East Branch or Foster Brook.

Great Blue Heron: towards the end of summer, Upper Salmon River estuary and along the coast at low tide.

Dragonfly: Bennett Lake, MacLaren Pond, and Caribou Plain.

Inner Bay of Fundy Atlantic Salmon: Upper Salmon River, September and October.



Photos: © Parks Canada / D. Doucet except moose © M. Rossiter; coyote and raccoon © Parks Canada; salmon © Parks Canada / N. Fearon

Keeping the "Wild" in Wildlife

When observing wildlife, respect the following rules:

- Keep your distance.
- Never feed wildlife. Animals that are fed will expect handouts and may become aggressive towards people.
- Keep your camping and picnic sites clean and store food in your vehicle.
- While driving, beware of deer and moose emerging from the forest.
- Be aware that wildlife can be unpredictable.
- Help preserve Fundy's natural beauty. Please leave all plants, animals, rocks, shells, and artifacts where you find them so we can admire them for years to come.
- Wildlife safety information is available at any visitor facility.



This image is provided by a park visitor

Wildlife Sightings

Two-hundred eyes are better than two! Check in at one of Fundy National park's visitor centres to report your wildlife sightings. Don't forget to take pictures and share with us on Facebook (fundyNP) or Twitter @FundyNP) or www.inaturalist.org/projects/fundy-national-park

VILLAGE of d'ALMA



LEGEND / LÉGENDE

- | | | | |
|--|------------------------------------|--|--|
| HIKING / RANDONNÉE PEDESTRE | PICNIC AREA / AIRE DE PIQUE-NIQUE | GOLF | MUSEUM / MUSÉE |
| CAMPING | FIRE STATION / CASERNE DE POMPIERS | INFORMATION / RENSEIGNEMENTS | ATM / GAB |
| CYCLING / VÉLO | WASHROOMS / TOILETTES | MUNICIPAL OFFICE / BUREAU MUNICIPAL | MUNICIPAL OFFICE / BUREAU MUNICIPAL |
| SWIMMING / BAIGNADE | POST OFFICE / BUREAU DE POSTE | PLAYGROUND / TERRAIN DE JEUX | PLAYGROUND / TERRAIN DE JEUX |
| RV PARKING / STATIONNEMENT RV | CHURCH / EGLISE | BEACH ACCESS / PLAGE | BEACH ACCESS / PLAGE |
| PARC NATIONAL FUNDY NATIONAL PARK, SUSSEX, SAINT JOHN, SENTIER FUNDY TRAIL | BOAT LAUNCH / MISE À L'EAU | BOAT RENTAL / LOCATION D'EMBARCATIONS | BOAT LAUNCH / MISE À L'EAU |
| | PUBLIC BEACH / PLAGE PUBLIQUE | FOSSIL VIEWING / OBSERVATION DE FOSSILES | FOSSIL VIEWING / OBSERVATION DE FOSSILES |
| | | AIRPORT / AÉROPORT | AIRPORT / AÉROPORT |

STAY / SÉJOURNER

- 2** Fundy Highland Motel and Chalets
506-887-2930, www.fundyhighlands.com
- 10** Captains Inn – 506-887-2017, 1-888-886-2017,
www.captainsinn.com
- 12** Parkland Village Inn – 506-887-2313, 866-668-4337
- 13** Alpine Motor Inn – 506-887-2052, 866-887-2052
- 16** Falcon Ridge Inn – 506-887-1110
- 19** Cleveland Place B&B
506-887-2213, www.cleveland-place.com
- 20** The Beach House B&B – 506-887-9880,
www.thebeachhousebedandbreakfastalma.com
- 21** Cottage on the Beach
506-887-2550, www.thankfultoo.com
- 22** Vista Ridge Cottages
506-887-2808, www.fundyparkchalets.com
- 23** Cliffside Suites and Cottages
506-887-1022, www.cliffsidesuites.com
- 26** The Bayview – 855-366-0166

EAT / SAVEURS

- 8** Fundy Take-out – 506-887-2261
- 9** Topsy Tails Bar and Grill – 506-887-2190
- 11** Harbourview Market and Restaurant – 506-887-2450
- 12** The Tides Restaurant – 506-887-2313, 866-668-4337
- 14** The Alma Boathouse Restaurant – 506-887-1101
- 28** Holy Whale Brewery – 506-887-1999
- 21** Alma Lobster Shop – 506-887-2550
- 24** An Octopus' Garden – 506-887-1020
- 25** Saprano's Pizza – 506-887-2220
- 28** Buddha Bear Coffee Roaster and Café – 506-887-1999

SHOP / MAGASINER

- 4** Fundy Guild Nature Boutique
506-887-6064, www.fundyguild.ca
- 6** Fundy General Store – 506-887-2345
- 13** Moosin' Around Gifts and Apparel – 506-887-2052
- 17** Kelly's Bakeshop – 506-887-2460
- 18** Collins Lobster Shop – 506-887-2054

DO / EXPLORER

- 19** Cleveland Place Books
506-887-2213, www.cleveland-place.com
- 19** Cleveland Place Artisan's Shop
506-887-2213, www.cleveland-place.com
- 27** Waterside Farms Cottage Winery
506-887-2058, www.watersidewinery.ca
- 1** Fundy National Park – 506-887-6000,
- 3** Outdoor Elements – 506-433-3060
- 5** Molly Kool Centre – 506-887-2213
- 7** FreshAir Adventure
506-887-2249, 1-800-545-0020
- 15** Alma Activity Centre and Alma Village Office
506-887-6123, www.villageofalma.ca

AMAZING PLACES / LIEUX FANTASTIQUES

Explore the Fundy Biosphere Reserve one amazing place at a time. <http://fbrazingplaces.ca/en/>
Explorez la Réserve de biosphère de Fundy un lieu fantastique à la fois. <http://fbrazingplaces.ca/fr/>

A Natural Splendour

New Brunswick's Bay of Fundy 

Seven spectacular locations on the edge of the Bay of Fundy, each with its own character, experiences, adventures and charm to share with you. Places to connect with friends, family and the wonders of the bay!



 **St. Andrews Blockhouse**
National Historic Site
www.parksCanada.gc.ca/blockhausstandrews



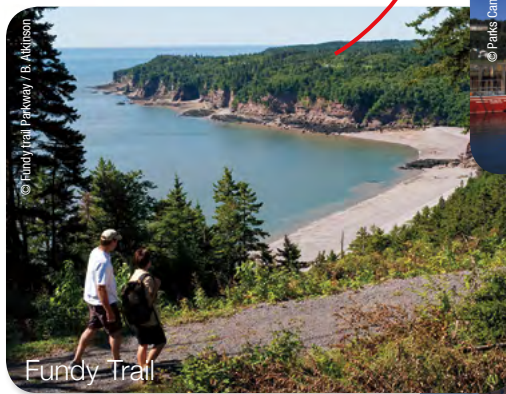
 **Carleton Martello Tower**
National Historic Site
www.parksCanada.gc.ca/carletonmartellotower



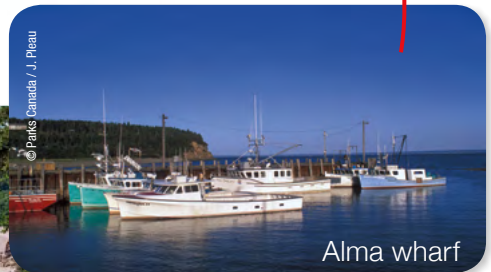
Hopewell Rocks
www.thehopewellrocks.ca



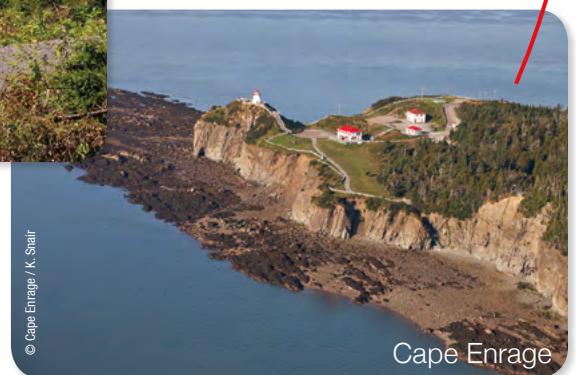
 **Saint Croix Island**
International Historic Site
www.parksCanada.gc.ca/saintcroix



Fundy Trail
www.fundytrailparkway.com



Alma wharf
www.villageofalma.ca



Cape Enrage
www.capeenrage.ca

Tide Schedule 2018 Experience the tides of Fundy

	May	June	July	Aug	Sept	Oct
1	1:41	2:48	3:02	3:45	4:24	4:45
	8:02	9:10	9:22	10:01	10:40	11:02
	14:08	15:16	15:29	16:07	16:45	17:07
	20:20	21:24	21:36	22:19	23:06	23:34
2	2:27	3:25	3:35	4:19	5:09	5:40
	8:48	9:46	9:55	10:35	11:26	11:59
	14:54	15:52	16:02	16:41	17:33	18:07
	21:04	21:59	22:11	22:55	23:58	
3	3:10	3:59	4:10	4:57	6:04	0:36
	9:30	10:21	10:30	11:13	12:22	6:46
	15:35	16:28	16:38	17:21	18:32	13:06
	21:25	22:36	22:48	23:39		19:17
4	3:49	4:35	4:49	5:42	1:01	1:46
	10:10	10:58	11:08	11:59	7:09	7:59
	16:15	17:08	17:19	18:09	13:28	14:18
	22:24	23:17	23:30		19:40	20:31
5	4:26	5:19	5:33	0:31	2:11	2:57
	10:48	11:41	11:52	6:37	8:21	9:08
	16:54	17:56	18:04	12:55	14:39	15:28
	23:04			19:06	20:52	21:38
6	5:05	0:07	0:19	1:33	3:21	4:02
	11:29	6:12	6:24	7:39	9:30	10:11
	17:39	12:33	12:42	13:57	15:48	16:31
	23:50	18:50	18:55	20:09	21:59	22:38
7	5:54	1:04	1:15	2:30	4:25	4:59
	12:18	7:11	7:21	8:46	10:34	11:07
	18:34	13:30	13:37	15:03	16:51	17:28
		19:47	19:50	21:14	23:00	23:33
8	0:45	2:04	2:14	3:44	5:25	5:53
	6:53	8:11	8:20	9:51	11:31	11:59
	13:17	14:27	14:35	16:07	17:50	18:20
	19:36	20:41	20:46	22:18	23:56	
9	1:48	3:02	3:14	4:47	6:18	0:24
	7:58	9:02	9:18	10:53	12:14	6:42
	14:18	15:21	15:33	17:09	18:42	12:48
	20:35	21:31	21:43	23:18		19:09
10	2:50	3:56	4:12	5:46	0:47	1:13
	8:58	9:58	10:16	11:52	7:07	7:29
	15:16	16:12	16:31	18:08	13:12	13:35
	21:28	22:19	22:39		19:30	19:56
11	3:47	4:46	5:09	0:15	1:34	2:00
	9:52	10:48	11:14	6:40	7:52	8:14
	16:08	17:02	17:28	12:45	13:57	14:41
	22:17	23:07	23:36	19:01	20:15	20:41
12	4:38	5:36	6:05	1:07	2:19	2:46
	10:41	11:39	12:10	7:29	8:35	8:59
	16:56	17:51	18:24	13:34	14:41	15:06
	23:01	23:57		19:50	20:59	21:26
13	5:25	6:26	0:31	1:54	3:02	3:31
	11:27	12:29	6:58	8:14	9:17	9:43
	17:40	18:42	13:03	14:19	15:24	15:50
	23:44		19:17	20:35	21:43	22:11
14	6:09	0:47	1:22	2:38	3:47	4:16
	12:10	7:15	7:47	8:56	10:01	10:29
	18:23	13:19	13:52	15:01	16:09	16:35
		19:32	20:06	21:18	22:28	22:57
15	0:26	1:36	1:22	3:20	4:33	5:03
	6:52	8:03	7:47	9:37	10:48	11:17
	12:54	14:06	13:52	15:44	16:57	17:22
	19:06	20:20	20:06	22:01	23:18	23:47

	May	June	July	Aug	Sept	Oct
16	1:08	2:23	2:54	4:04	5:24	5:56
	7:35	8:48	9:16	10:21	11:40	12:10
	13:37	14:52	15:20	16:29	17:50	18:17
	19:49	21:06	21:26	22:48		
17	1:52	3:09	3:38	4:52	0:15	0:43
	8:18	9:32	9:58	11:09	6:23	6:56
	14:20	15:36	16:04	17:20	12:40	13:10
	20:33	21:52	22:20	23:40	18:51	19:19
18	2:36	3:54	4:23	5:46	1:19	1:44
	9:01	10:17	10:42	12:04	7:29	7:59
	15:04	16:23	16:51	18:17	13:45	14:13
	21:19	22:39	23:09		19:57	20:22
19	3:21	4:42	5:13	0:42	2:24	2:44
	9:46	11:04	11:32	6:49	8:35	8:58
	15:50	17:13	17:44	13:08	14:49	15:12
	21:19	23:31		19:22	21:00	21:19
20	4:08	5:35	0:04	1:49	3:24	3:39
	10:33	11:57	6:10	7:58	9:34	9:51
	16:39	18:10	12:30	14:15	15:48	16:07
	22:56		18:44	20:29	21:56	22:12
21	4:59	0:30	1:08	2:56	4:18	4:31
	11:25	6:37	7:16	9:04	10:27	10:40
	17:34	12:58	13:35	15:19	16:41	16:59
	23:52	19:13	19:50	21:31	22:47	23:02
22	5:58	1:36	2:17	3:56	5:08	5:20
	12:23	7:44	8:24	10:04	11:16	11:27
	18:36	14:04	14:42	16:18	17:32	17:47
		20:18	20:55	22:27	23:36	23:50
23	0:56	2:43	3:22	4:51	5:56	6:05
	7:04	8:50	9:29	10:58	12:03	12:11
	13:27	15:08	15:45	17:11	18:19	18:31
	19:42	21:21	21:57	23:19		
24	2:04	3:47	4:22	5:42	0:23	0:34
	8:12	9:52	10:29	11:49	6:41	6:46
	14:33	16:09	16:43	18:02	12:48	12:50
	20:47	22:20	22:53		19:04	19:11
25	3:10	4:45	5:18	0:07	1:07	1:13
	9:17	10:51	11:25	6:29	7:22	7:23
	15:36	17:06	17:37	12:36	13:28	13:25
	21:47	23:16	23:46	18:49	19:43	19:47
26	4:11	5:41	6:10	0:53	1:46	1:48
	10:16	11:47	12:17	7:13	7:58	7:57
	16:34	18:00	18:28	13:21	14:02	13:58
	22:43			19:33	20:18	20:21
27	5:08	0:09	0:35	1:36	2:19	2:21
	11:13	6:33	6:58	7:54	8:30	8:33
	17:29	12:40	13:05	14:01	14:31	14:33
	23:38	18:52	19:16	20:12	20:49	20:58
28	6:02	0:59	1:20	2:14	2:48	2:58
	12:08	7:22	7:42	8:30	8:59	9:11
	18:22	13:30	13:49	14:35	15:01	15:13
		19:39	19:59	20:47	21:21	21:38
29	0:31	1:45	2:01	2:48	3:20	3:40
	6:54	8:07	8:22	9:01	9:34	9:55
	13:00	14:14	14:29	15:05	15:35	15:58
	19:13	20:23	20:38	21:18	21:57	22:23
30	1:21	2:26	2:39	3:17	3:58	4:27
	7:43	8:47	8:57	9:31	10:14	10:45
	13:50	14:54	15:04	15:33	16:17	16:49
	20:00	21:01	21:12	21:49	22:41	23:15
31	2:07		3:13	3:48		5:22
	8:29		9:30	10:02		11:41
	14:35		15:36	16:06		17:48
	20:44		21:45	22:23		

Blue = High Tide Red = Low