

FUNDY

NATIONAL PARK

NEW BRUNSWICK • CANADA



Souvenir
OF THE
OFFICIAL OPENING
OF
FUNDY
NATIONAL PARK
New Brunswick

Nineteen Hundred and Fifty

NATIONAL PARKS AND
HISTORIC SITES SERVICE

Department of Resources and Development

OTTAWA, CANADA

FOREWORDS



BY THE HONOURABLE ROBERT H. WINTERS
Minister of Resources and Development
OTTAWA, CANADA

Fundy National Park is the newest link in a chain of nationally-owned playgrounds stretching from the heart of the Selkirk Mountains in Western Canada to the rugged coast of Cape Breton Island on our eastern seaboard.

This delightful area of well-wooded, well-watered landscape and scenic seascape is the gift of the government and people of New Brunswick to the Canadian people as a whole. Its location, overlooking the magnificent Bay of Fundy that has always occupied a place of importance in the history and development of this continent, is a happy choice. Its name, selected as a result of an essay competition held throughout New Brunswick schools at the request of the Premier, The Honourable J. B. McNair, seems very appropriate indeed.

Fundy National Park will add immensely to the recreational facilities of the Province of New Brunswick; its benefits will be shared by Canadians from every province and their friends from other lands.

It is the intention of the Government of Canada to develop and maintain this superb area in such a manner that its natural attractions may be preserved for the enjoyment of future generations.



BY THE HONOURABLE JOHN B. McNAIR
Premier of New Brunswick

Fundy National Park has been developed in an area typical of the Province of New Brunswick.

Our maritime tradition is represented by the Bay of Fundy which washes the shores of the park. Inland, mighty forests and sparkling lakes and streams combine to produce an effect of rugged and unspoiled beauty upon which much of the fame of this province as a vacationland has been based.

New Brunswick, and Canada as a whole, might well feel proud of this latest addition to the national parks of our country. The achievement in constructing and developing the 80 square mile area into a playground for the use of Canadians and their guests from other lands is a noteworthy one.

The fame of Fundy National Park will, I am confident, spread far and wide in the years to come as one of Canada's showplaces. Let us hope that it will ever remain as a symbol of our heritage and as an invitation to all men of good will to find there the peace and relaxation so urgently sought in these days of increasing tension.



Flower-bordered road leading down to Herring Cove

*"For healing of the winds among the pines,
The stilling beauty of the clear new moon,
The strength of hills, the joy of singing streams,
Take any road at hand, to Out-of-doors."*

CARMAN

*"By the stir of creation, the drama of
seasons beguiled;
Sanctuary and solace he found in the
heart of the wild."*

ROBERTS

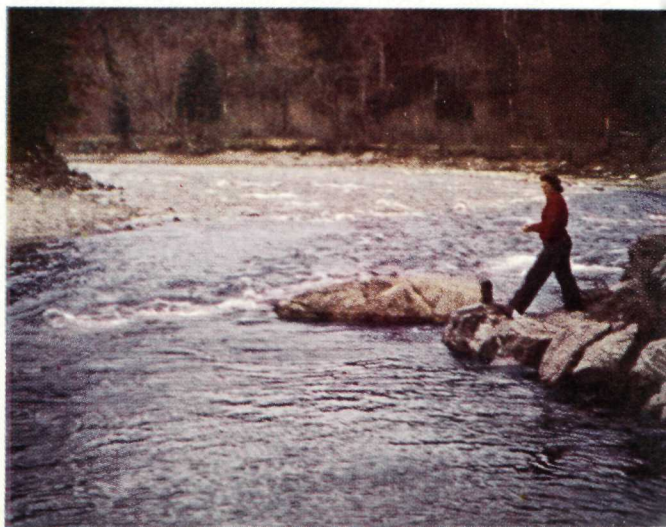
The park is a sanctuary
for all wildlife



Beaver house by a rocky island on Bennett Lake



Salmon pool on Point Wolf River



The 9-hole golf course follows the contours of the southern slope of the park, overlooking the Bay of Fundy

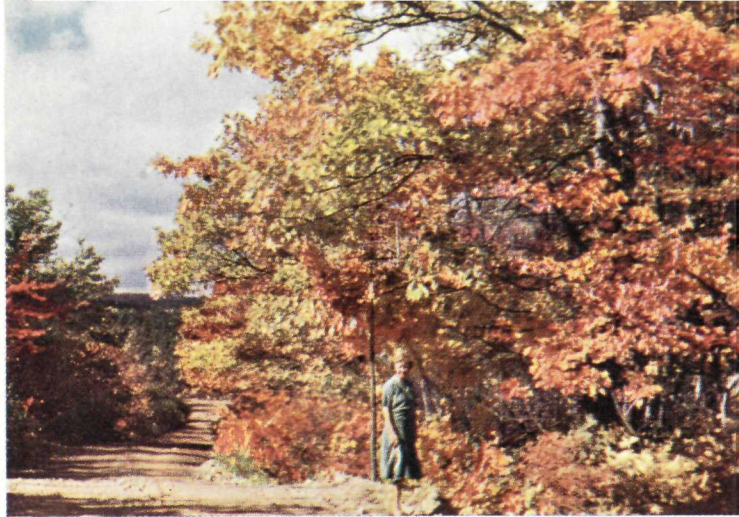


*"Among the sunlight shadows I can see
That still perfection from the world withdrawn,
As if the wood-gods had arrested there
Immortal beauty in her breathless flight."*

CARMAN

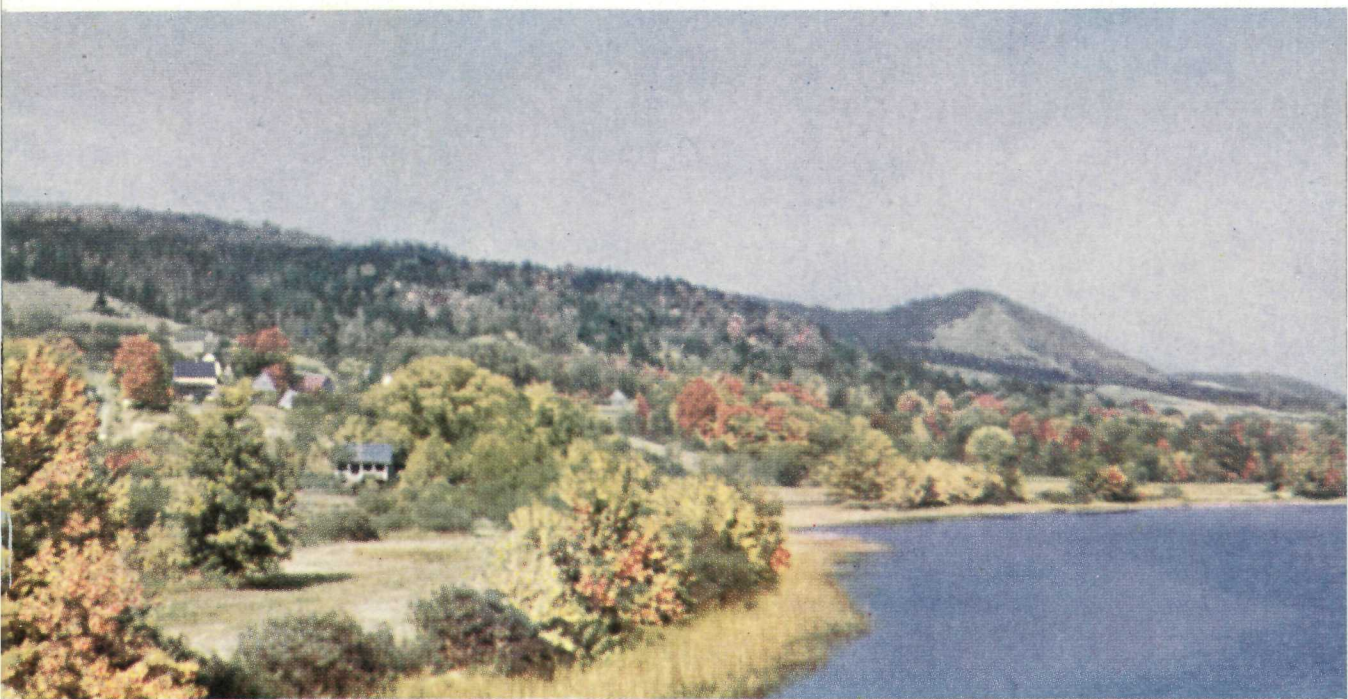






*"October's peace hath fallen on everything,
In the far west, above the pine-crowned hill,
With red and purple yet the heavens thrill—
The passing of the sun remembering."*

SHERMAN



Autumn scenes rivalling the sunset's brightest hues . . .



The park provides a commanding view of the coastal area



Cottages of French chalet design for park visitors

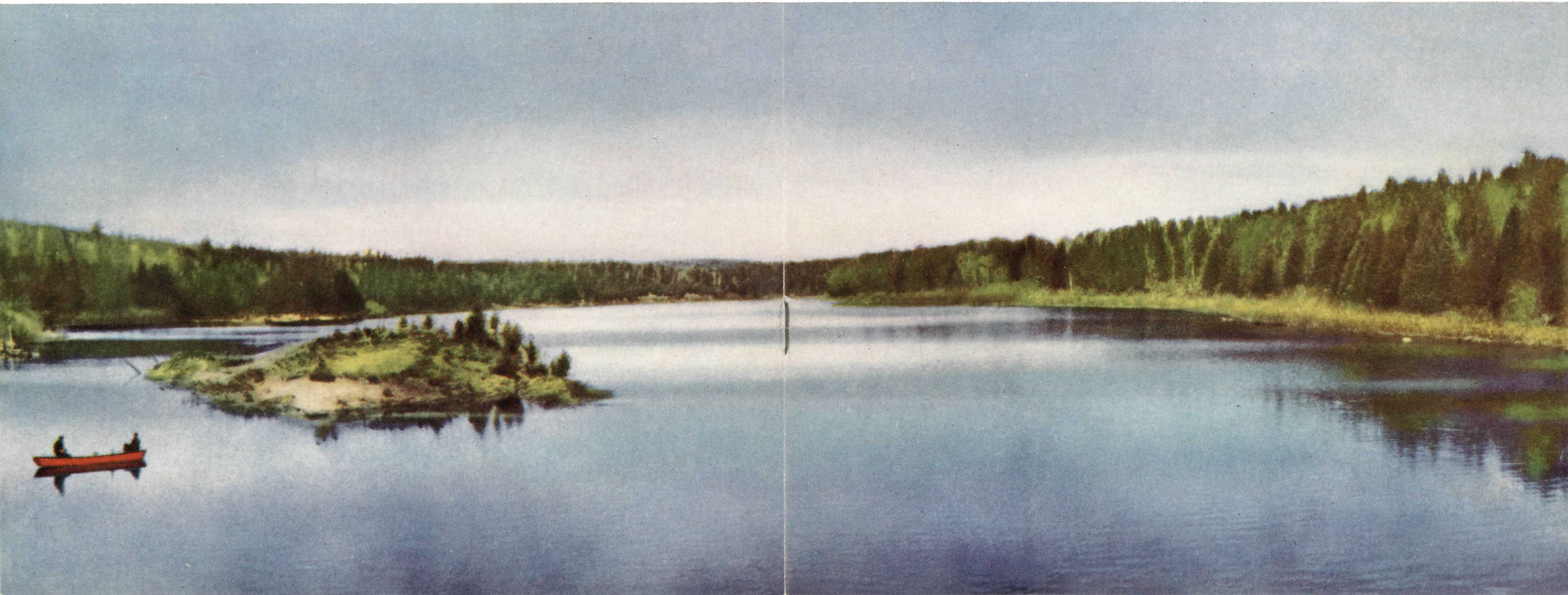


"A cottage small"—but very artistic



The little lake in the headquarters area is deep spring-fed

Panoramic view of Bennett Lake



Eastern brook trout provide sport
for the angler in Tracy Lake



Site for the sports field at park headquarters



*"Where trees are tall
Hear where young birds hold
their high festival;
And see where shallow waters
know thy peace." . . .*

Lake View, near the park's western entrance, has
a sylvan setting





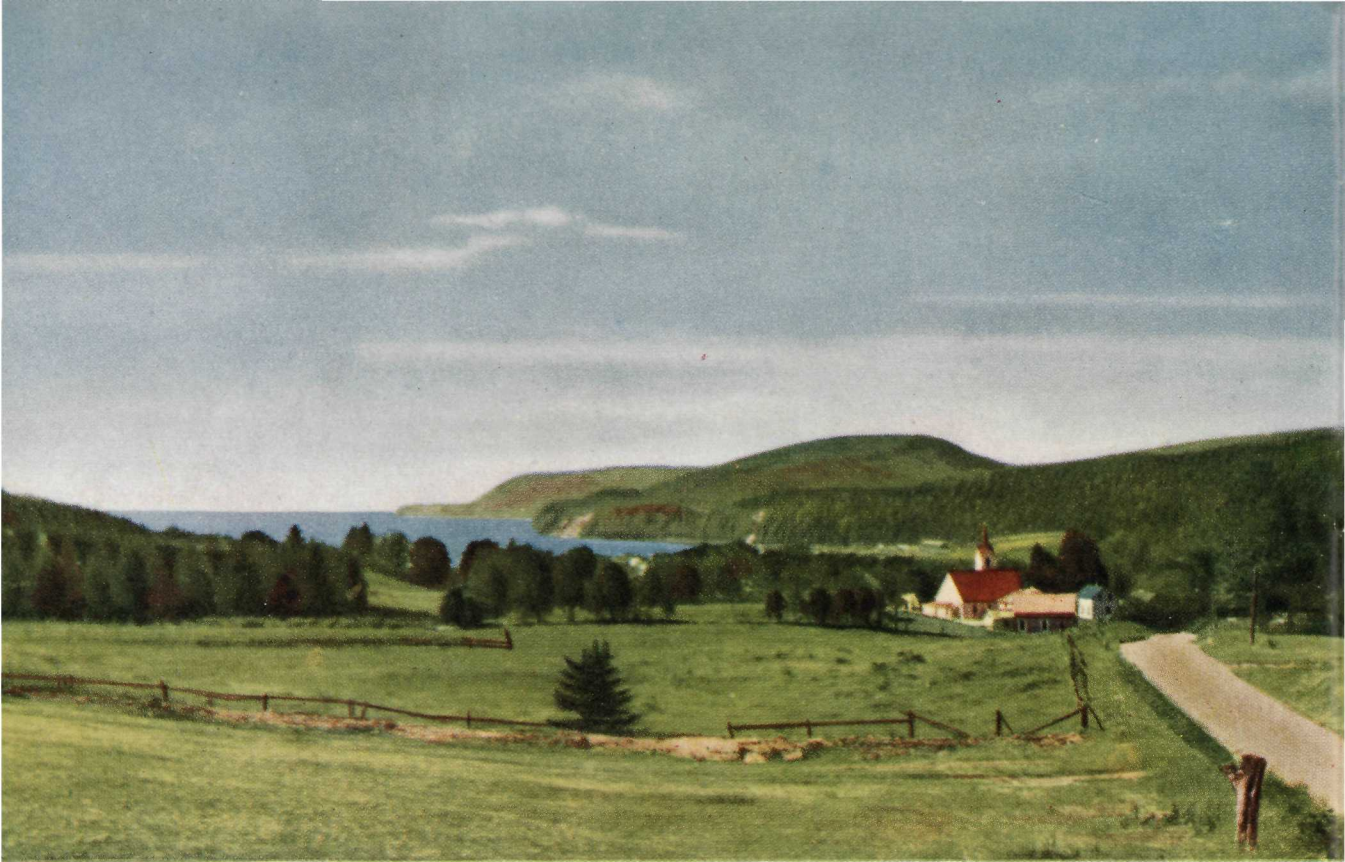
Headlands at Alma

*"Come with me further still
Where, in the sight of the sea,
This garden liveth under mellow skies;
Is not this place a pleasant one for thee?"*

SHERMAN

Estuary of Point Wolf River





Village of Alma—eastern entrance to the park

Morning mist over the Bay of Fundy



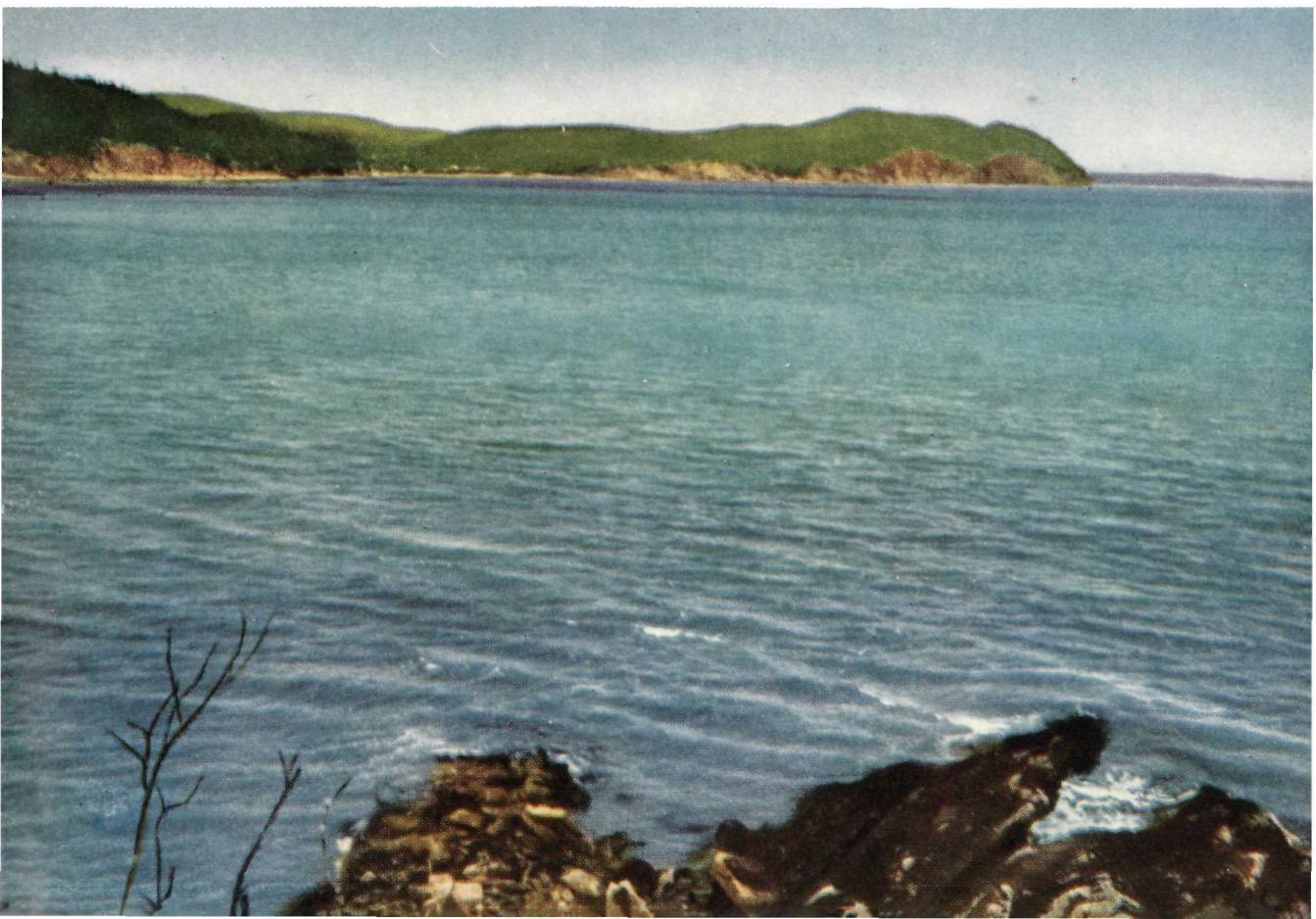
Flower-carpeted
meadows, forest-clad
hills—and always the
tang of the sea air



*“O rocks, O fir tree brave,
O grass and sea!
Your strength is mine, and you
Endure with me.”*

ROBERTS

Rocky shoreline of the Bay of Fundy—Owl Head in the background





Looking downstream from Point Wolf River bridge

Quotations appearing in this booklet are excerpts from the verses of three of New Brunswick's great poets—Bliss Carman, Sir Charles G. D. Roberts and Francis Joseph Sherman.

Site for the open air amphitheatre



Wild flowers add colour and fragrance to the landscape



FORT BEAUSEJOUR NATIONAL HISTORIC PARK

The new wing shown on the left of this picture is named the "John Clarence Webster Wing" in honour of the late Dr. Webster, who was Chairman of the Historic Sites and Monuments Board of Canada and one of New Brunswick's most notable sons





NATIONAL PARKS OF CANADA

NOVA SCOTIA

CAPE BRETON HIGHLANDS. Rugged Atlantic coastline with mountain background. Fine seascapes from park highway. Recreational opportunities. Hotel and bungalow cabin accommodation, within park area. Hotel and boarding-house accommodation adjacent to park. Equipped camp-grounds. Established in 1936; area, 390 square miles.

FORTRESS OF LOUISBOURG. National Historic Park with museum near Louisburg. Ruins of walled city erected by the French 1720-40. Interesting excavations. Established 1941; area, 340 acres.

PORT ROYAL. National Historic Park at Lower Granville. Restoration of "Habitation" or first fort built in 1605 by Champlain, DeMonts and Poutrincourt. Established 1941; area, 17 acres.

FORT ANNE. National Historic Park with museum at Annapolis Royal. Well preserved earthworks. Established 1917; area, 31 acres.

PRINCE EDWARD ISLAND

Coastal strip 25 miles long on shores of the Gulf of St. Lawrence. Recreational area; fine bathing beaches. Accessible by highway. Hotel and bungalow cabin accommodation within and adjacent to park. Equipped camp-grounds. Established in 1937; area, 7 square miles.

NEW BRUNSWICK

FORT BEAUSEJOUR. National Historic Park with museum near Sackville. Site of early French fort. Established 1926; area, 81 acres.

FUNDY. Delightful recreational area on the Bay of Fundy between the cities of Saint John and Moncton. Forested region, wildlife sanctuary, rugged terrain. Established 1948; area, approximately 80 square miles.

QUEBEC

FORT CHAMBLY. National Historic Park with museum at Chambly. First built by the French, 1665. Established 1941; area, 2.5 acres.

FORT LENNOX. National Historic Park on Île-aux-Noix in Richelieu River, near St. Johns. Built by French in 1759. Established 1941; area, 210 acres.

ONTARIO

ST. LAWRENCE ISLANDS. Mainland area and 13 islands among the "Thousand Islands". Recreational and camping area. Mainland accessible by highway; islands reached by boat from nearby mainland points. Established 1914; area, 189.4 acres.

POINT PELEE. Recreational area on Lake Erie. Remarkable beaches, southern flora. Resting place for migratory birds. Accessible by highway. Hotel and bungalow cabin accommodation in park area and vicinity. Equipped camp-grounds. Established 1918; area, 6.04 square miles.

GEORGIAN BAY ISLANDS. Recreational and camping area. Accessible by boat from nearby mainland points. Equipped camp-grounds and annual youth camps on Beauséjour Island. Unique pillars on Flowerpot Island. Established 1929; area, 5.40 square miles.

FORT MALDEN. National Historic Park with museums at Amherstburg. Site of defence post built 1797-99. Established 1941; area, 8.5 acres.

FORT WELLINGTON. National Historic Park with museum at Prescott. Defence post built 1812-13. Established 1941; area, 8.5 acres.

MANITOBA

RIDING MOUNTAIN. Playground and wildlife sanctuary on summit of Manitoba escarpment. Fine lakes; summer playground and recreational area. Accessible by highway. Hotel and bungalow cabin accommodation. Equipped camp-grounds. Established in 1929; area, 1,148 square miles.

FORT PRINCE OF WALES. National Historic Park at Churchill on the shores of Hudson Bay. Ruins of fort built 1733-71. Established 1941; area, 50 acres.

SASKATCHEWAN

PRINCE ALBERT. Forested region dotted with lakes and interlaced with streams. Summer playground and recreational area. Accessible by highway. Hotel and bungalow cabin accommodation. Equipped camp-grounds. Established 1927; area, 1,496 square miles.

ALBERTA

BANFF. Magnificent scenic playground in central Rockies. Contains noted resorts, Banff and Lake Louise. Mineral hot springs; summer and winter sports. Accessible by rail, highway and air. Hotel and bungalow cabin accommodation. Equipped camp-grounds. Established 1885; area, 2,564 square miles.

JASPER. Mountain playground and noted wildlife sanctuary. Contains majestic peaks, ice-fields, beautiful lakes and famous resort, Jasper. Mineral hot springs, summer and winter sports. Accessible by rail, highway and air. Hotel and bungalow cabin accommodation. Equipped camp-grounds. Established 1907; area, 4,200 square miles.

WATERTON LAKES. Canadian section, Waterton-Glacier International Peace Park. Mountain playground with colourful peaks and charming lakes. Accessible by highway. Hotel and bungalow cabin accommodation. Equipped camp-grounds. Established 1895; area, 204 square miles.

ELK ISLAND. Fenced preserve near Edmonton containing a large herd of buffalo; also deer, elk and moose. Popular recreational area; bungalow cabin accommodation and equipped camp-grounds. Accessible by highway. Established 1913; area, 75 square miles.

BRITISH COLUMBIA

YOHO. On west slopes of Rockies. Lofty peaks, magnificent waterfalls, colourful lakes. Yoho and Kicking Horse Valleys. Accessible by rail and highway. Hotel and bungalow cabin accommodation. Equipped camp-grounds. Established 1886; area, 507 square miles.

KOOTENAY. Encloses Vermilion-Sinclair section of the Banff-Windermere Highway in Rockies. Broad valleys, deep canyons, mineral hot springs. Hotel and bungalow cabin accommodation. Equipped camp-grounds. Established 1920; area, 543 square miles.

GLACIER. Superb alpine region in Selkirk Mountains. Towering peaks, glaciers and forests. Accessible by railway only. Climbing, skiing, camping. Established 1886; area, 521 square miles.

MOUNT REVELSTOKE. Rolling mountain-top plateau on west slope of Selkirk Mountains. Colourful alpine meadows. Accessible by rail and highway. Summer accommodation in park. All-year accommodation in nearby town of Revelstoke. Equipped camp-grounds. Championship ski runs and ski jump. Established 1914; area, 100 square miles.

NORTHWEST TERRITORIES AND ALBERTA

WOOD BUFFALO. Immense region of forests and open plains between Athabasca and Great Slave Lakes. Home of largest remaining herd of bison on the Continent. Other wildlife species abundant. Established 1922; area, 17,300 square miles.

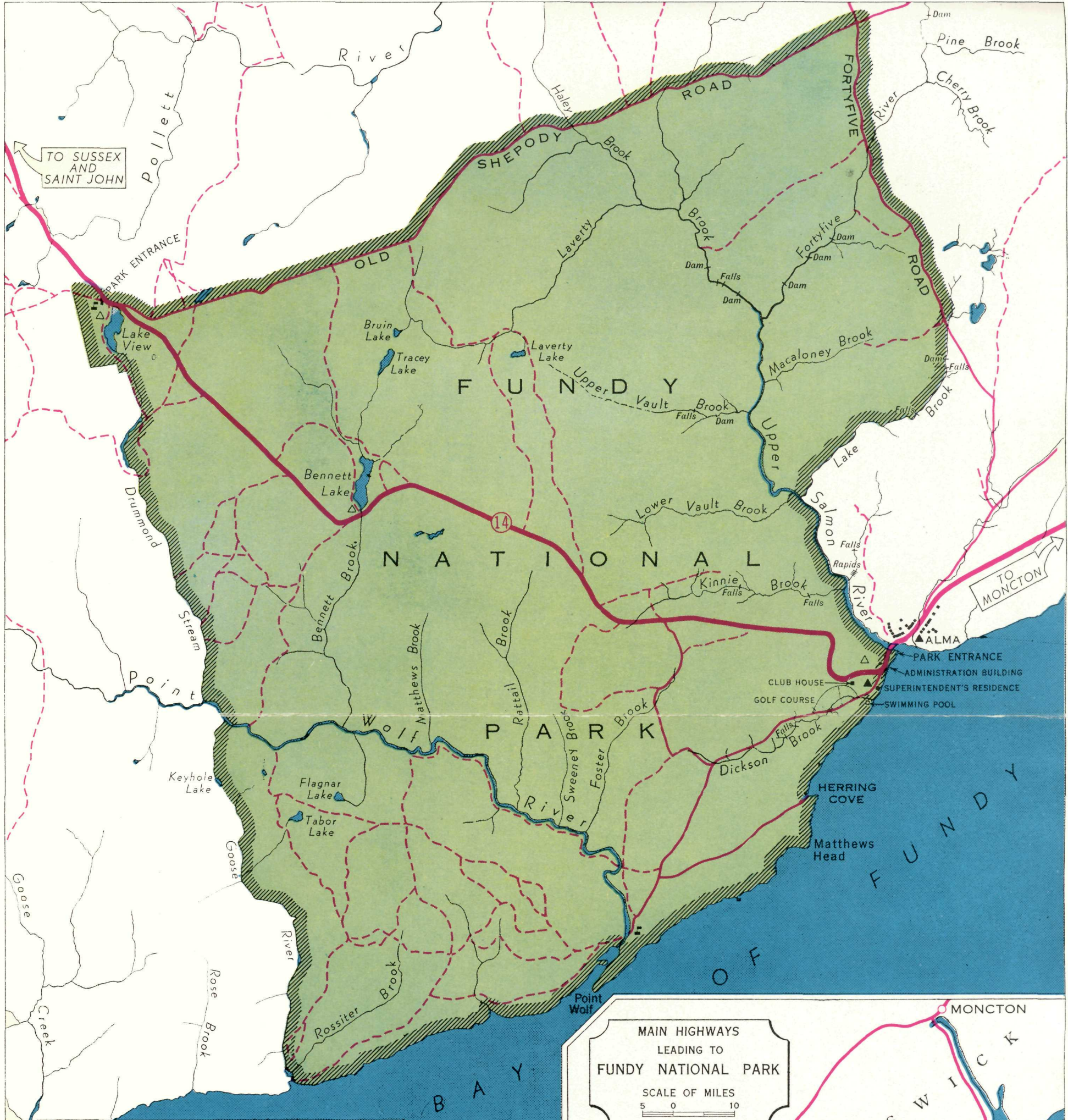
DEPARTMENT OF RESOURCES AND DEVELOPMENT

Development Services Branch

NATIONAL PARKS AND HISTORIC SITES SERVICE

OTTAWA, CANADA

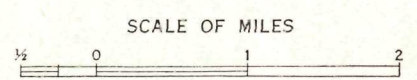
EDMOND CLOUTIER, C.M.G., B.A., L.Ph., KING'S PRINTER AND CONTROLLER OF STATIONERY



CANADA
 DEPARTMENT OF RESOURCES AND DEVELOPMENT
 NATIONAL PARKS SERVICE
 1950

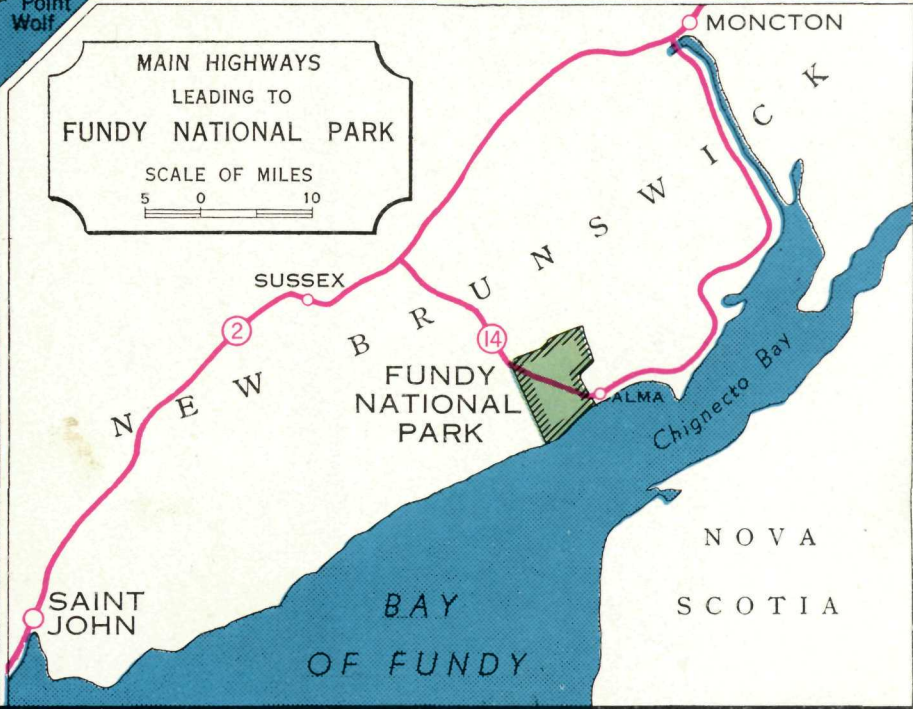
FUNDY NATIONAL PARK

NEW BRUNSWICK



REFERENCE

- Hotel or Bungalow Cabin ... ▲
- Picnic or Camp-Ground ... △
- Warden's Cabin ... ■
- Park Boundary ... [Hatched Line]
- Main Highway ... [Thick Red Line]
- Secondary Road ... [Thin Red Line]
- Trail ... [Dashed Red Line]



MAIN HIGHWAYS
 LEADING TO
 FUNDY NATIONAL PARK

SCALE OF MILES
 5 0 10

