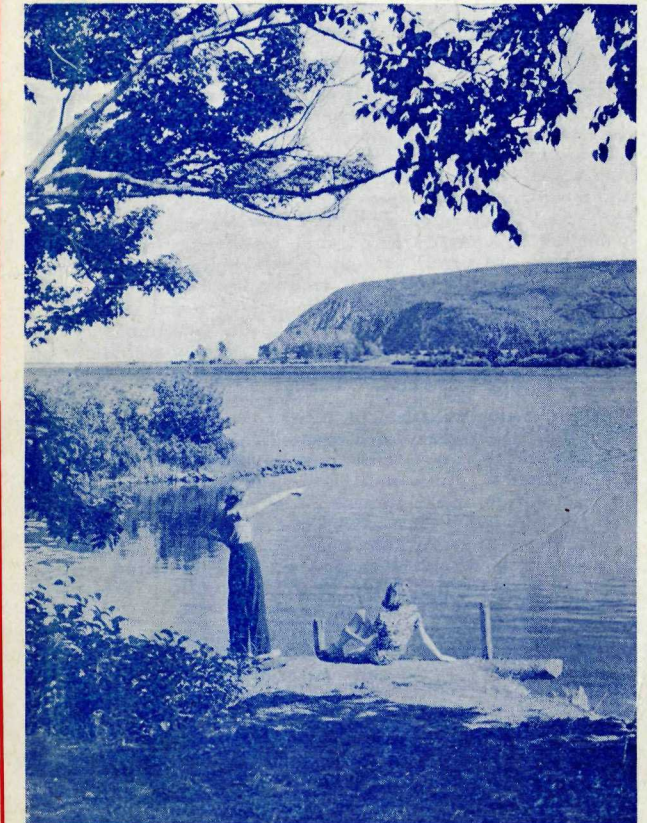


THE NATIONAL PARKS OF CANADA

1. **MOUNT REVELSTOKE, British Columbia.** Rolling mountain-top plateau on west slope of Selkirk Mountains. Area, 100 square miles.
2. **GLACIER, British Columbia.** Superb alpine region in Selkirk Mountains. Great peaks, glaciers, forests. Area, 521 square miles.
3. **YOHO, British Columbia.** On west slope of Rockies. High peaks, beautiful lakes, Yoho and Kicking Horse Valleys. Area, 507 square miles.
4. **KOOTENAY, British Columbia.** Encloses Vermilion-Sinclair section of the Banff-Windermere Highway in Rockies. Broad valleys, deep canyons, hot mineral springs. Area, 587 square miles.
5. **JASPER, Alberta.** Mountain playground and game sanctuary. Contains majestic peaks, ice-fields, beautiful lakes, and famous resort, Jasper. Summer and winter sports. Area, 4,200 square miles.
6. **BANFF, Alberta.** Magnificent scenic playground in central Rockies. Contains noted resorts, Banff and Lake Louise. Summer and winter sports centre; big game sanctuary. Area, 2,585 square miles.
7. **WATERTON LAKES, Alberta.** Canadian Section, Waterton-Glacier International Peace Park. Mountain playground with colourful peaks; varied flora and fauna. Area, 220 square miles.
8. **NEMISKAM, Alberta.** Fenced preserve near Foremost, containing a herd of pronghorned antelope. Area, 8.5 square miles.
9. **ELK ISLAND, Alberta.** Fenced preserve near Edmonton containing a large herd of buffalo; also deer, elk, and moose. Recreational and camping resort. Area, 51.2 square miles.
10. **WOOD BUFFALO, Alberta and N.W.T.** Immense region of forests and open plains between Athabaska and Great Slave Lakes. Contains a large herd of buffalo and other game. Area, 17,300 square miles.
11. **PRINCE ALBERT, Saskatchewan.** Forested region dotted with lakes and interlaced with streams. Summer resort and recreational area. Area, 1,869 square miles.
12. **RIDING MOUNTAIN, Manitoba.** Playground and game sanctuary on summit of Manitoba escarpment. Fine lakes; summer resort and recreational area. Area, 1,148 square miles.
13. **FORT PRINCE OF WALES, Manitoba.** National Historic Park at Churchill. Ruins of fort built 1733-71. Area, 50 acres.
14. **FORT MALDEN, Ontario.** National Historic Park with museum at Amherstburg. Site of defence post built 1797-99. Area, 3 acres.
15. **POINT PELEE, Ontario.** Recreational area on Lake Erie. Campgrounds, remarkable beaches, unique flora. Resting place for migratory birds. Area, 6 square miles.
16. **GEORGIAN BAY ISLANDS, Ontario.** Recreational and camping areas. Unique pillars on Flowerpot Island. Area, 5.37 square miles.
17. **LAWRENCE ISLANDS, Ontario.** Mainland area, and 13 islands in "Thousand Islands". Recreational facilities. Area, 186 acres.
18. **FORT WELLINGTON, Ontario.** National Historic Park with museum at Prescott. Defence post built 1812-13. Area 8½ acres.
19. **FORT CHAMBLY, Quebec.** National Historic Park with museum at Chamby Canton. First built by French, 1665. Area, 2½ acres.
20. **FORT LENNOX, Quebec.** National Historic Park on Ile-aux-Noix in Richelieu River, near St. Johns. Area, 210 acres.
21. **FORT BEAUSÉJOUR, New Brunswick.** National Historic Park with museum near Sackville. Site of early French fort. Area, 59 acres.
22. **PRINCE EDWARD ISLAND.** Strip 25 miles long on north shore of island province. Recreational area; fine beaches. Area, 7 square miles.
23. **PORT ROYAL, Nova Scotia.** National Historic Park at Lower Granville. Restoration of "Habitation" or first fort built in 1605 by Champlain, DeMonts, and Poutrincourt. Area, 17 acres.
24. **FORT ANNE, Nova Scotia.** National Historic Park with museum at Annapolis Royal. Well-preserved earthworks. Area, 31 acres.
25. **FORTRESS OF LOUISBOURG, Nova Scotia.** National Historic Park with museum near Louisburg. Ruins of walled city erected by the French 1720-40. Interesting excavations. Area, 340 acres.
26. **CAPE BRETON HIGHLANDS, Nova Scotia.** Rugged Cape Breton Island coastline with mountain background. Fine seascapes from park highway. Recreational opportunities. Area, 390 square miles.

CAPE BRETON HIGHLANDS NATIONAL PARK NOVA SCOTIA



Cape Smoky and Freshwater Lake

GENERAL INFORMATION AND MAP

DEPARTMENT OF MINES AND RESOURCES
LANDS, PARKS AND FORESTS BRANCH
NATIONAL PARKS BUREAU
OTTAWA, CANADA

Printed by EDMOND CLOUTIER, King's Printer,
Ottawa, Canada, 1942

Reqn. 10183.

CANADA
DEPARTMENT OF MINES AND RESOURCES
NATIONAL PARKS BUREAU
1942

MAP OF
**CAPE BRETON HIGHLANDS
NATIONAL PARK**
NOVA SCOTIA

SCALE
MILES 2 0 2 4 MILES

REFERENCE

- Main Highway..... Park Area.....
- Secondary Road..... Hotel or Bungalow Camp.....
- Trail..... Picnic or Camp-ground.....

TABLE OF DISTANCES

Baddeck to Margaree Forks	32.5 Miles
Margaree Forks to Cheticamp	25 "
Cheticamp to Pleasant Bay	24.5 "
Pleasant Bay to Cape North	19.5 "
Cape North to Bay St. Lawrence	12 "
Neil Harbour to North Ingonish	11.5 "
North Ingonish to Park Headquarters..	5.7 "
Park Headquarters to Sydney	73.2 "
Park Headquarters to Baddeck	55.2 "

TO BADDECK
49 MILES

TO SYDNEY
58 MILES

