



LIEU HISTORIQUE NATIONAL
DU CANADA DU

CANAL-DE-LACHINE

Images du passé

LACHINE CANAL

NATIONAL HISTORIC SITE
OF CANADA

Images From the Past



Archives nationales du Canada / National Archives of Canada C113716



Parcs Canada Parks Canada

Canada

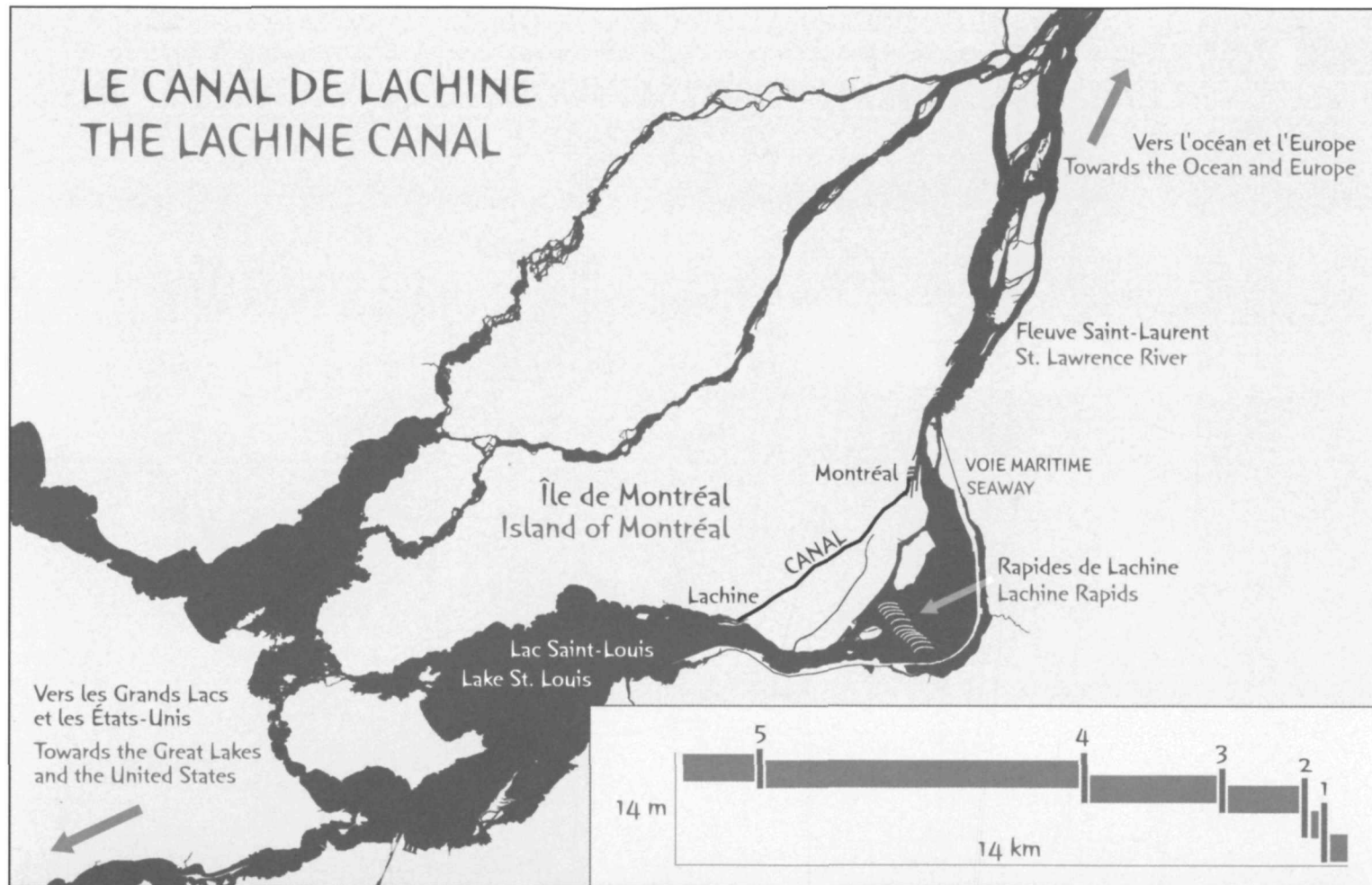


SOURCE : BIBLIOTHÈQUE NATIONALE DU QUÉBEC, COLLECTION NUMÉRIQUE www.bnquebec.ca/cargeo
SOURCE : BIBLIOTHÈQUE NATIONALE DU QUÉBEC, DIGITAL COLLECTION www.bnquebec.ca/cargeo

**ATLAS
OF THE ISLAND AND CITY
OF MONTRÉAL
AND ÎLE BIZARD
BY A.R. PINJONAUT
1907**

Carte du Sud-Ouest de Montréal (montage infographique), 1907. Bibliothèque nationale du Québec.
Map of South-West Montréal (infographic collage), 1907. Bibliothèque nationale du Québec.

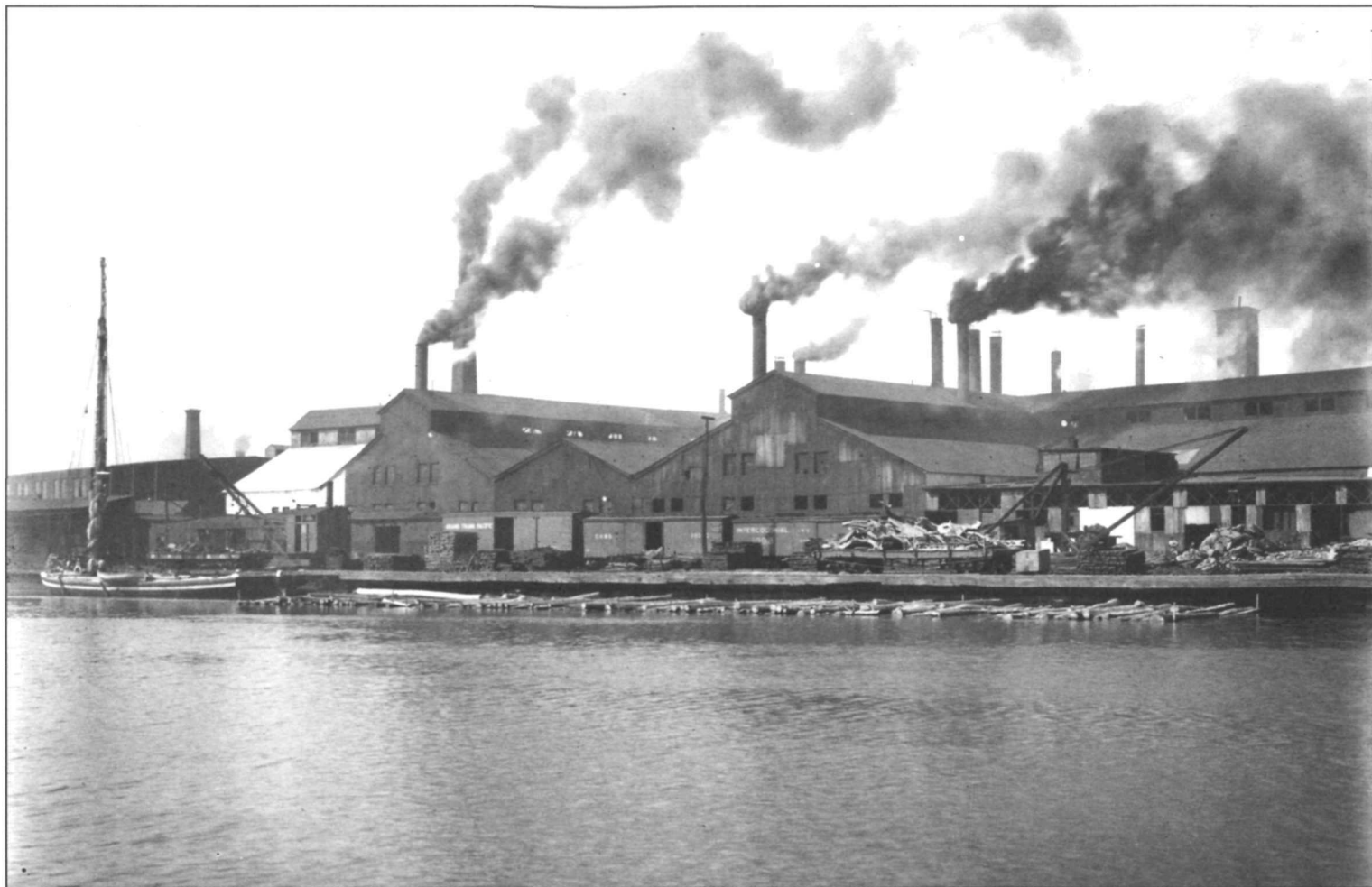
LE CANAL DE LACHINE THE LACHINE CANAL



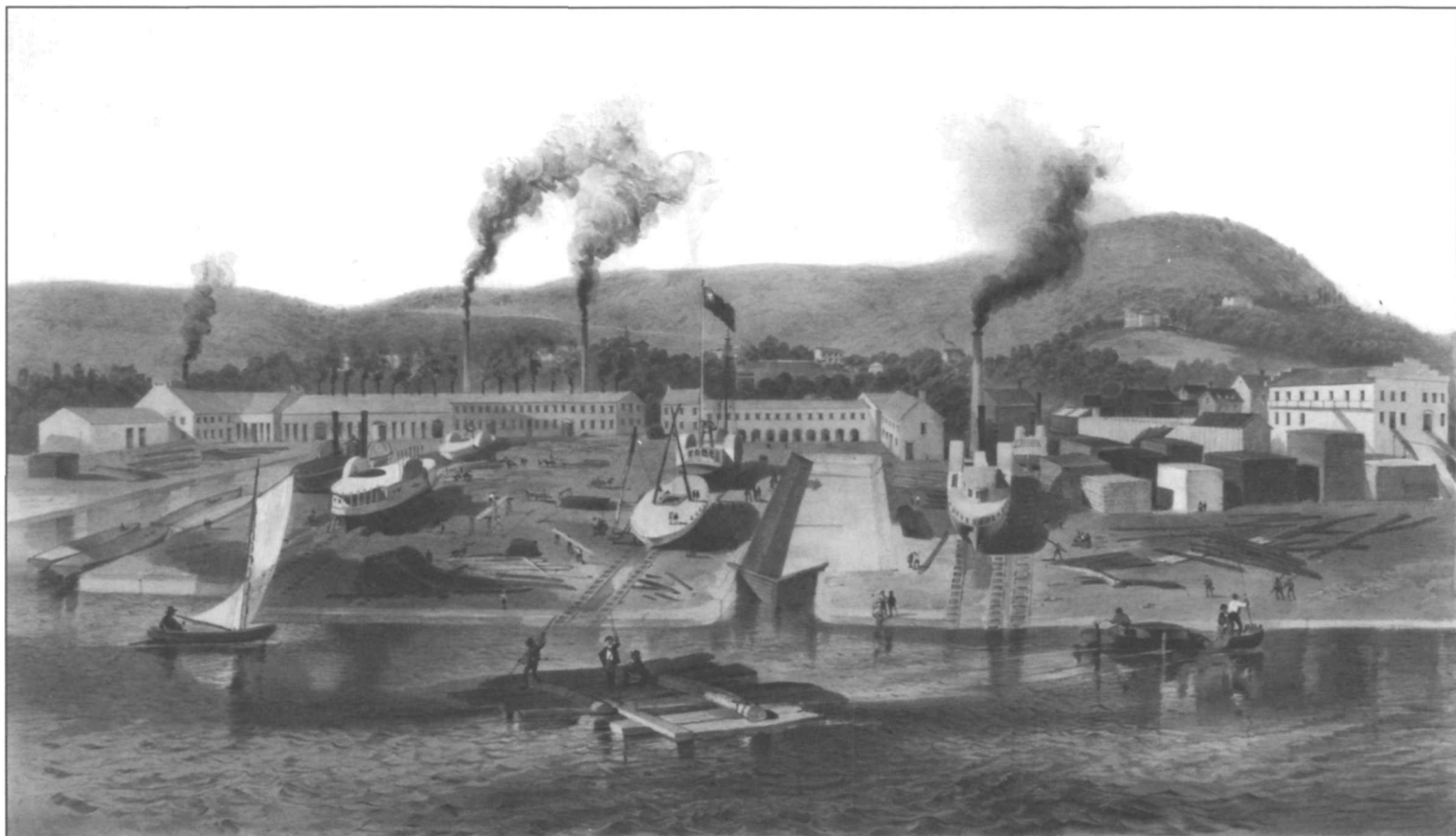
Carte de l'archipel de Montréal et vue en coupe du canal. Parcs Canada, 2004.
Map of the Montréal Archipelago and cross-section of the canal. Parks Canada, 2004.



Le pont n° 5, rue Atwater, date non précisée (vers 1925). Archives nationales du Canada (PA202366).
Bridge No. 5, Atwater Street, date not specified (circa 1925). National Archives of Canada (PA202366).



L'usine de la Stelco (ex-Montreal Rolling Mills), 1910. Archives nationales du Canada (PA110141).
Stelco plant (former Montreal Rolling Mills), 1910. National Archives of Canada (PA110141).

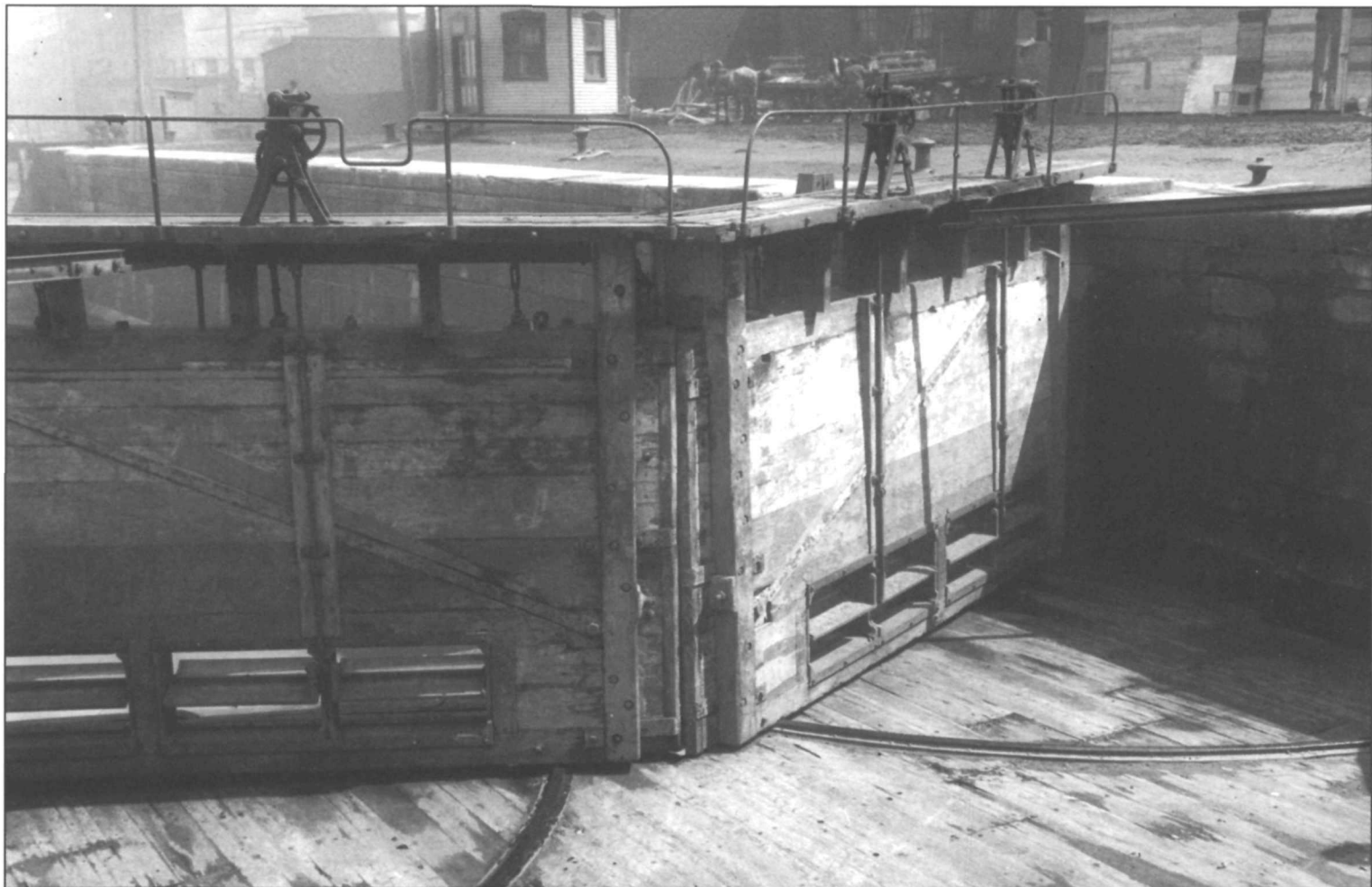


LITH. OF SARONY, MAJOR & KNAPP, 440 BROADWAY, N. Y.

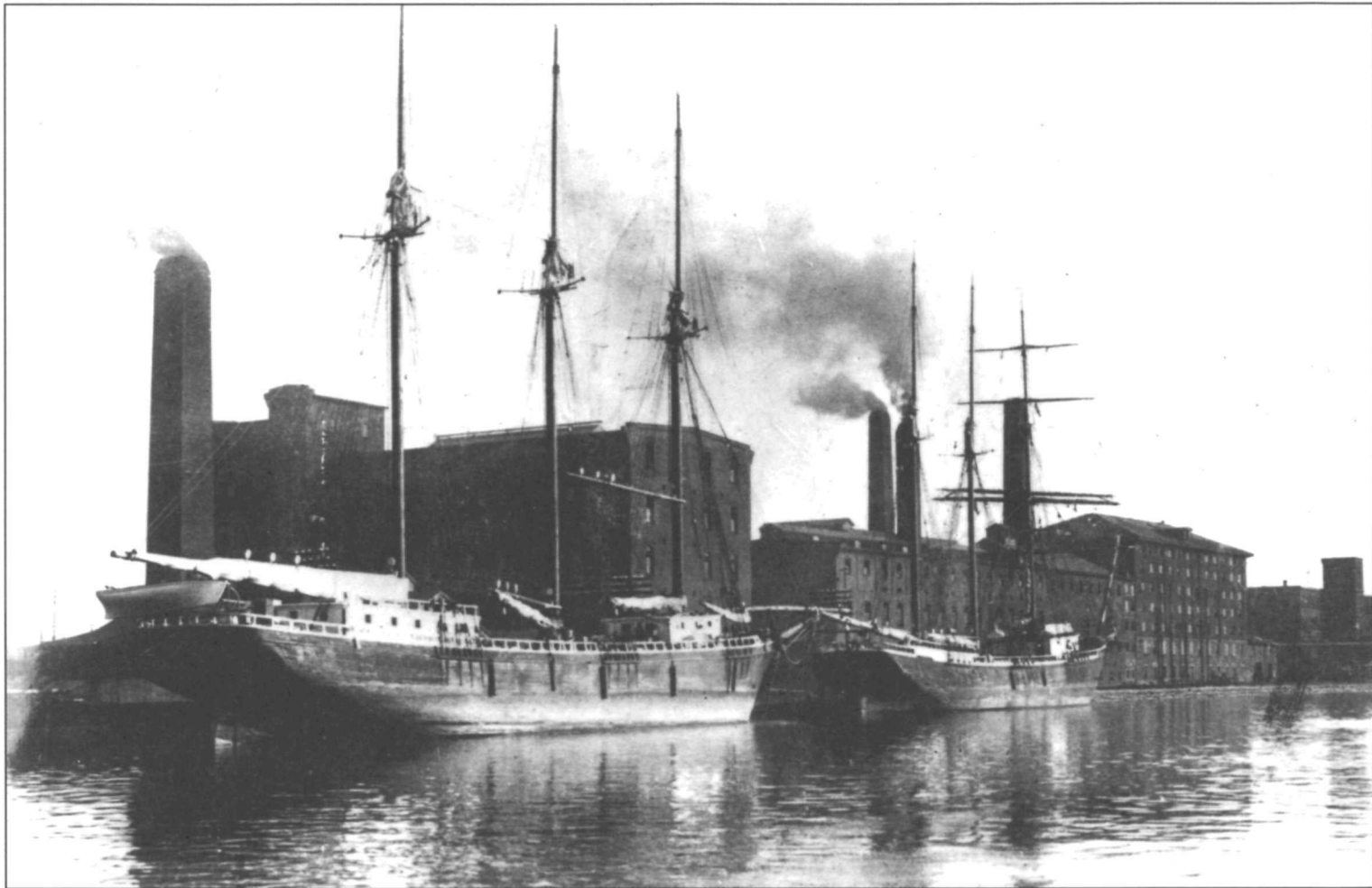
ATELIER DE MARINE DU CANADA
AUGUSTIN CANTIN
Montreal C. E.

CANADA MARINE WORKS
AUGUSTIN CANTIN
Montreal C. E.

Le chantier maritime d'Augustin Cantin, 1857. Archives nationales du Canada (e000943145).
Augustin Cantin's shipyard, 1857. National Archives of Canada (e000943145).



Les vannes de la porte amont, écluse de Saint-Gabriel (sud), 1920. Archives nationales du Canada (PA109986).
Upper gate sluices, South Saint-Gabriel lock, 1920. National Archives of Canada (PA109986).



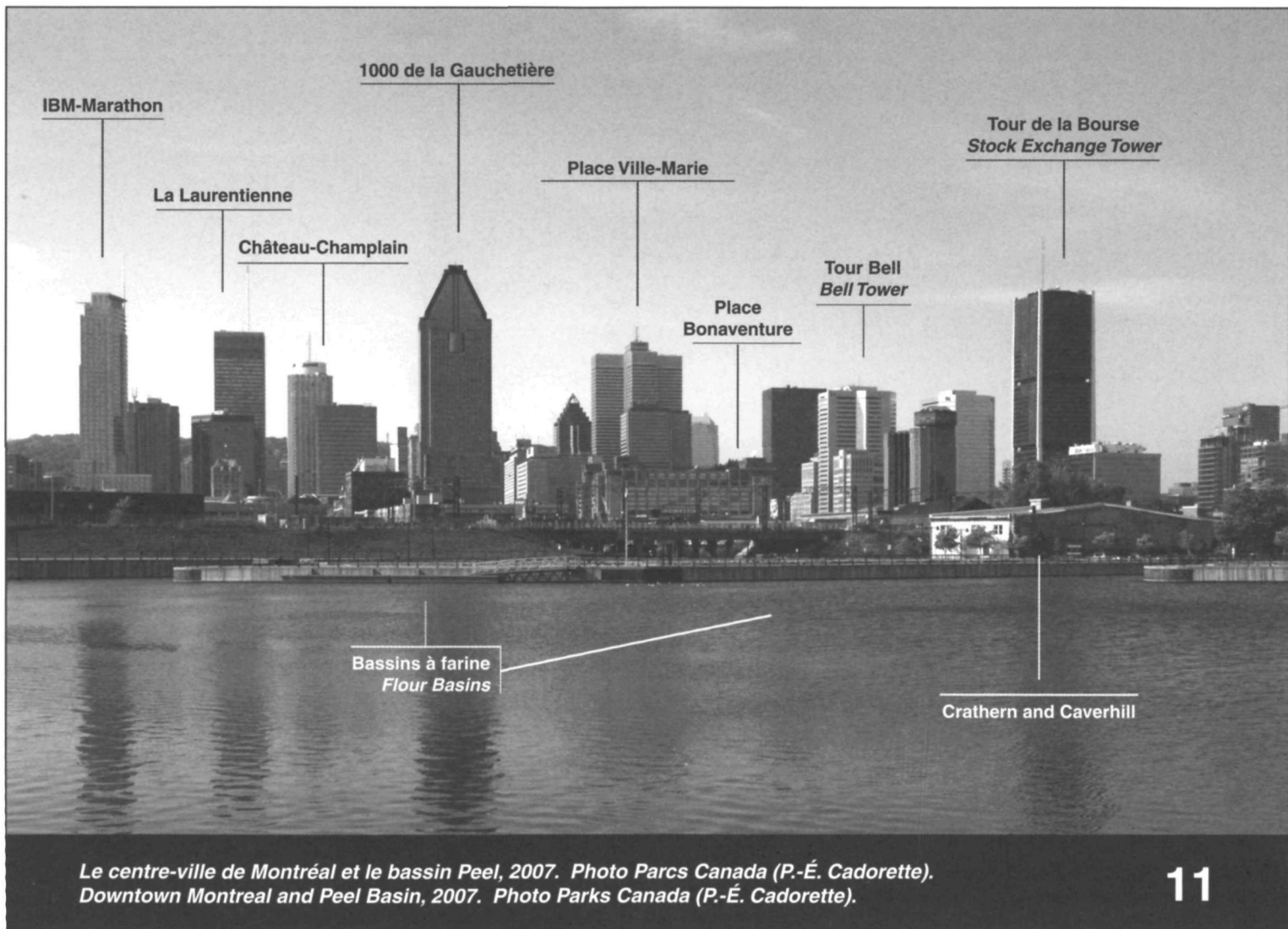
Navires devant la raffinerie, 1897. Archives de la Redpath Sugar Company.
Ships in front of the refinery, 1897. Redpath Sugar Company archives.



Les ponts CN-Du port et CN-Wellington, vers 1943. Archives nationales du Canada (PA202868).
CN-Harbour and CN-Wellington bridges, circa 1943. National Archives of Canada (PA202868).



Le bassin de manoeuvre et l'entrée est du canal, 1931. Hydro-Québec.
The turning basin and the eastern entrance to the canal, 1931. Hydro-Québec.



*Le centre-ville de Montréal et le bassin Peel, 2007. Photo Parcs Canada (P.-É. Cadorette).
Downtown Montreal and Peel Basin, 2007. Photo Parks Canada (P.-É. Cadorette).*



Montréal depuis la cheminée de la centrale de la Montreal Street Railway, 1896. Archives Notman (VIEW-2942).
Montréal from Montreal Street Railway power house chimney, 1896. Notman Archives (VIEW-2942).



Montréal depuis la cheminée de la centrale de la Montreal Street Railway, 1896. Archives Notman (VIEW-2944).
Montréal from Montreal Street Railway power house chimney, 1896. Notman Archives (VIEW-2944).



L'usine Belding-Corticelli, 1942. Archives nationales du Canada (PA110015).
Belding-Corticelli factory, 1942. National Archives of Canada (PA110015).



L'usine Cordage Manufacturers, 1942. Archives nationales du Canada (PA119176).
Cordage Manufacturers factory, 1942. National Archives of Canada (PA119176).



1273

Le pont CN-Saint-Henri, 1920. Archives nationales du Canada (PA118797).
CN-Saint-Henri bridge, 1920. National Archives of Canada (PA118797).



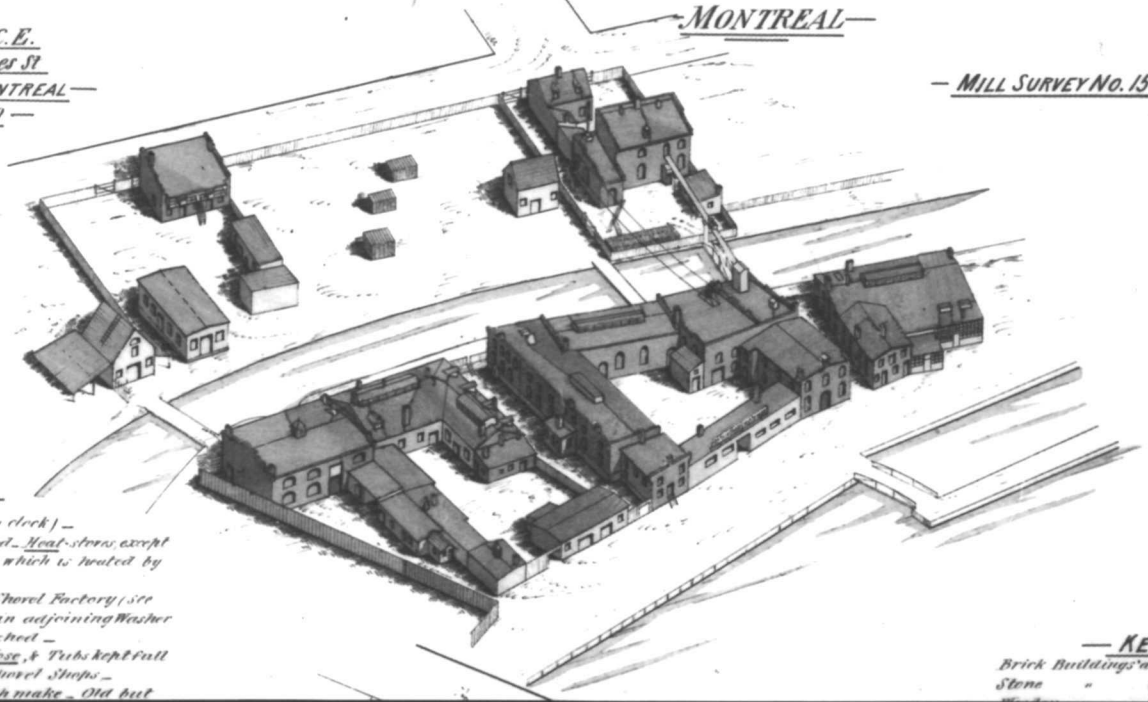
L'usine Dominion Textile (ex-Merchants Manufacturing), 1947. Archives nationales du Canada (PA211412).
Dominion Textile plant (former Merchants Manufacturing), 1947. National Archives of Canada (PA211412).

INSURANCE PLAN
 — of —
MANUFACTURING PREMISES
 — Property — of —
THE ESTATE JOHN FROTHINGHAM
 on Lachine Canal — Côte St. Paul —

MONTREAL

Chas. E. Goad C.E.
162 St. James St
 — MONTREAL —
 — June 1880 —

— MILL SURVEY No. 15. —



— REMARKS —

10 Hounds — Watchman (no clock) —
Power Water — Fire — coal & wood — Heat — stoves, except
 in handle Shop No. 18, which is heated by
 steam —
Water power for pumps in Shore Factory (see
 Plan) 150' of hose kept in adjoining Washer
 Shop, ready to be attached —
Several lengths of small hose & Trubs kept full
 of water, in Scythe & shovel Shops —
Hand Fire Engine — English make — Old but

— KEY —

Brick Buildings are Colored Red
 Stone " " " " Blue

La manufacture d'outils de John Frothingham, Côte-Saint-Paul, 1880. Archives nationales du Canada.
 John Frothingham's tool factory, Côte-Saint-Paul, 1880. National Archives of Canada.



La centrale hydroélectrique de Côte-Saint-Paul, 1905. Archives nationales du Canada (C-063600).
Côte-Saint-Paul hydro-electric station, 1905. National Archives of Canada (C-063600).



Le S.S. *Westoil* dans l'écluse n° 1, port de Montréal, 1924. Archives nationales du Canada (PA202453).
S.S. *Westoil* in Lock No. 1, Montréal Harbour, 1924. National Archives of Canada (PA202453).