



Banff
National Park

Visitor Guide

2024 – 2025



Cascade Ponds



**Public transit and
shuttle information:**
See page 4

Egalement offert en français



Parks
Canada

Parcs
Canada

Canada



📷 Cave and Basin Boardwalk



📷 Lake Louise Lakeshore

Canada's first national park

Banff National Park is an important place for people to connect with history and nature. Indigenous peoples have been using the lands and waters of Banff for millennia; for sustenance, ceremony, trade and travel. We thank them for their continuous stewardship and for sharing the land with us.

In 1885, a small area around the Cave and Basin Hot Springs was protected and became the core of the first national park in Canada. More than 130 years later, millions of people visit the park each year. They come to experience natural beauty, outdoor adventures, seven national historic sites and iconic wildlife - from grizzly bears to the Banff Springs Snail.

Go see for yourself! Banff National Park offers mountains of possibilities.

A UNESCO World Heritage Site

Four of the mountain national parks – Banff, Jasper, Yoho and Kootenay – are recognized by the United Nations Educational, Scientific and Cultural Organization (UNESCO) as part of the Canadian Rocky Mountain Parks World Heritage Site, for the benefit and enjoyment of all nations. Among the attributes that warranted this designation were vast wilderness, diversity of flora and fauna, outstanding natural beauty and features such as Lake Louise, Maligne Lake, the Columbia Icefield and the Burgess Shale fossils.



Content

Public Transit Information	4-5
Camping	6-7
Icefields Parkway Map	8-9
Lake Louise Area Map	10-11
Bow Valley Parkway Map	12-13
Town of Banff Map	14-15
Lake Minnewanka Area Map	16
Protecting Park Waters	17
Volunteering	17
Interpretive Programs and Activities	17
Hidden Lake Guided Hikes.....	17
Wildlife and You	18-19
Mountain Safety	20
Winter Adventures	21
National Park Regulations	22-23

Find us

Banff

Banff Visitor Centre: 224 Banff Avenue

Banff Train Station: 327 Railway Avenue
403-762-1550 | banffinfo@pc.gc.ca

Lake Louise Visitor Centre:

201 Village Road, next to Samson Mall
403-522-3833 | ll.info@pc.gc.ca

parks.canada.ca/banff

Hours of operation: parks.canada.ca/banff-hours

Jasper

Jasper Information Centre:

780-852-6176 | parks.canada.ca/jasper

Tourism Jasper: 780-852-6236, jasper.travel

Kootenay

Kootenay Visitor Centre:

250-347-9505 | parks.canada.ca/kootenay

Tourism Radium: 1-888-347-9331, radiumhotsprings.com

Yoho

Yoho Visitor Centre:

250-343-6783 | parks.canada.ca/yoho

Tourism Golden: 1-800-622-4653,
tourismgolden.com, field.ca

Mount Revelstoke and Glacier

Rogers Pass Discovery Centre:

250-837-7500 | parks.canada.ca/glacier |

parks.canada.ca/revelstoke

Tourism Revelstoke: 1-800-487-1493, seerevelstoke.com

Waterton Lakes

Waterton Lakes Visitor Centre:

403-859-5133 | parks.canada.ca/waterton

Waterton Chamber of Commerce: mywaterton.ca

Useful links



Public transit information:

parks.canada.ca/banff-transit or explorethepark.ca



Brochures:

parks.canada.ca/banff-brochures



National park entry fee:

parks.canada.ca/banff-parkpass



Weather:

weather.gc.ca



Important bulletins:

parks.canada.ca/banff-bulletins



Trail conditions:

parks.canada.ca/banff-trails



Banff Dispatch:

403-762-1470



Real-time parking information:

parks.canada.ca/banffnow



Town of Banff parking:

banffparking.ca



Road conditions:

511.alberta.ca and drivebc.ca



Banff & Lake Louise Tourism:

banfflakelouise.com



facebook.com/BanffNP



twitter.com/BanffNP



instagram.com/parks.canada



Public Transit Information



Explore the park by Roam Public Transit

Take public transit between the town of Banff and many top destinations in the park, including Lake Louise. These locations are extremely busy. Plan ahead for the best experience. Visit roamtransit.com for more information.



A valid national park entry pass is required when visiting the park.



Roam Public Transit

Visiting Lake Louise and Moraine Lake

Reserve a seat on a Parks Canada shuttle to see both iconic lakes in one day.

Advance reservations are required. Additional tickets get released at 8 a.m. (MDT) two days before each departure date.

reservation.pc.gc.ca
1-877-737-3783



Quick Facts:

- You need a shuttle reservation. Plan ahead!**
- Shuttles run mid-May to mid-October.
- Price for a shuttle day pass (round trip, including Lake Connector): **\$8** for adults, **\$4** for seniors, free for youth (17 and under).
- You need a national park entry pass.
- Reservation holders must check in at the Lake Louise Park and Ride (Lake Louise Ski Area, 1 Whitehorn Road).
- First shuttles to the lakes: 6:30 a.m.
- Last shuttles back to the Park and Ride: 7:30 p.m.
- Shuttle frequency: every 15-20 minutes

Moraine Lake Road is closed to personal vehicles year-round. Parks Canada shuttles, Roam Public Transit, and commercial buses are permitted from June to mid-October.

Visit parks.canada.ca/lakelouise-transit for more information.

What to do if Parks Canada shuttles are sold out today?

Due to high demand, same-day shuttle tickets are often not available. You must explore other options or plan your trip for another day. More tickets get released at 8 a.m. (MDT), two days before each departure date. Example: You can book your shuttle trip for June 3 at 8 a.m. on June 1.

Are there any other options?

Take Roam Public Transit Route 8X from the town of Banff to the Lake Louise Lakeshore. Visit roamtransit.com for more information or to make a reservation.

Commercial bus operators may have space available today. Visit explorethepark.ca for more information.

Visit the Cave and Basin National Historic Site

Roam Route 4 (summer service)
Experience a 4-screen HD movie and see bubbling thermal waters that gave rise to the birthplace of national parks in Canada. Visit parks.canada.ca/cave for current trip planning, activities, and key date information.

Soak in the Banff Upper Hot Springs

Roam Route 1 (year-round)
Relax in Canada's highest elevation operational hot spring. Visit hotsprings.ca for up-to-date hours, fees and visitor information.

Explore the Lake Minnewanka Area

Roam Route 6 (summer service)
In the summer, take Roam Public Transit to Johnson Lake, Two Jack Lake and Lake Minnewanka. Enjoy hiking, picnicking and beautiful lake views.

Discover the Banff Park Museum National Historic Site

Roam Routes 1, 2 (year-round) and 4 (summer service)
Take a wild trip back in time with vintage natural history specimens from bears to bees. Visit parks.canada.ca/banffparkmuseum for current trip planning and key date information.

Hike Johnston Canyon

Roam Route 9 (summer service and limited winter service)
This very popular trail follows a canyon to waterfalls. Take Roam Public Transit to this location in the summer. In winter, be sure to bring ice cleats.

Visit Lake Louise and Moraine Lake

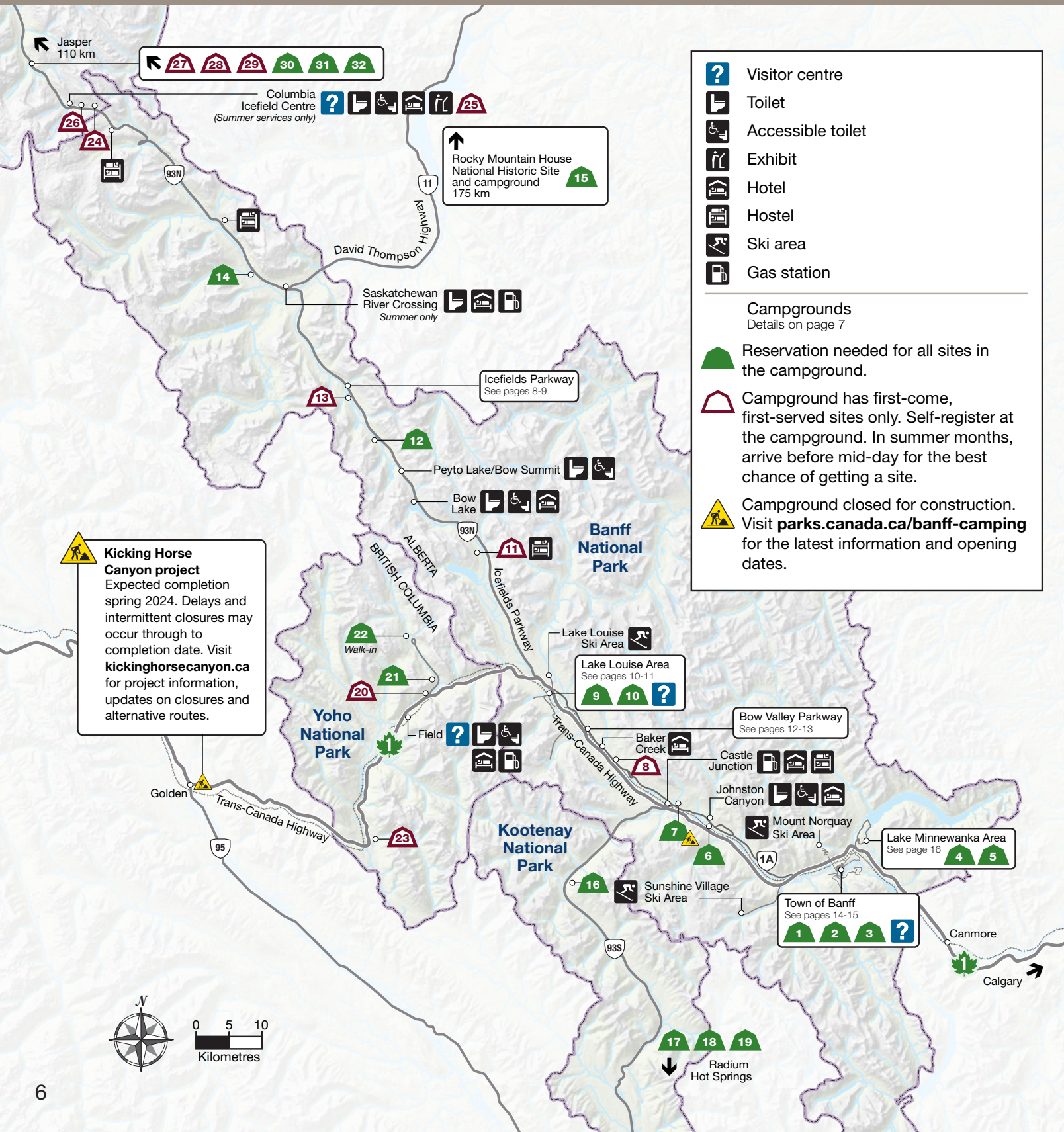
- Roam Route 8X (year-round to Lake Louise only)**
- Roam Route 10 (fall service to Moraine Lake only)**
- Parks Canada shuttle (summer service to both lakes)**



Camping

Campsites fill up quickly. Reservations are required. Book online or call ahead for information and reservations. Camping is permitted in designated campgrounds only. A valid camping permit and national park entry pass are required. For backcountry camping, visit parks.canada.ca/banff-backcountry for trip ideas, planning and permit information.

1-877-RESERVE (1-877-737-3783) or reservation.pc.gc.ca



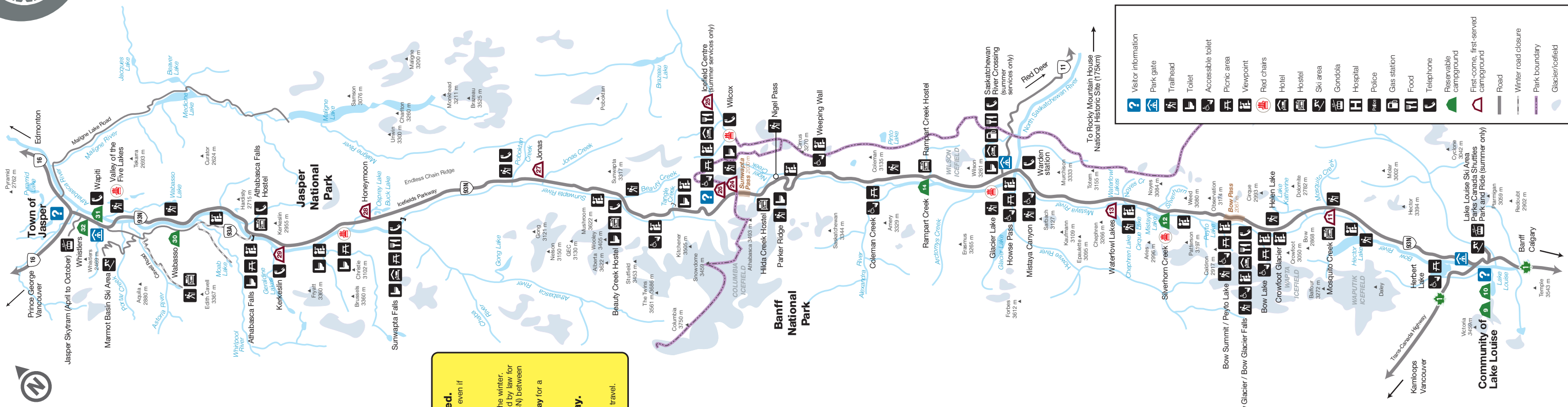
Campgrounds	Open dates ¹	Full hook-up	Electrical	Sani dump	Flush toilets	Pit toilets	Showers	Firepit	Cooking shelter	Drinking water	Accessible facilities ²	Interpretive programs	oTENTik	Equipped campsites	Tents/Trapper tents	Sites
1 Tunnel Mtn. Village I	May 9 - Oct. 6															618
2 Tunnel Mtn. Village II	Open year-round oTENTiks May 9 - Oct. 14															209
3 Tunnel Mtn. Trailer Court	May 9 - Oct. 6															322
4 Two Jack Main	June 20 - Sep. 2															380
5 Two Jack Lakeside	May 23 - Oct. 6 oTENTiks May 23 - Oct. 6															74
6 Johnston Canyon	May 23 - Sep. 22															132
7 Castle Mountain	To be determined															43
8 Protection Mountain	June 20 - Sep. 2															72
9 Lake Louise Tent	May 31 - Sep. 22															206
10 Lake Louise Trailer	Open year-round															189
11 Mosquito Creek	June 7 - Oct. 14															38
12 Silverhorn	May 31 - Sep. 29															45
13 Waterfowl Lakes	June 20 - Sep. 2															110
14 Rampart Creek	May 31 - Sep. 22															51
15 Rocky Mountain House National Historic Site	May 17 - Sep. 29															45
16 Marble Canyon	June 20 - Sep. 2															60
17 McLeod Meadows	June 6 - Sep. 9															88
18 Redstreak	Apr. 25 - Oct. 14 oTENTiks May 16 - Sep. 14															242
19 Crook's Meadow (Non-profit and school groups)	Email kootenay.info@pc.gc.ca for reservation information.															1
20 Monarch	May 2 - Sep. 16															44
21 Kicking Horse	May 16 - Oct. 14															88
22 Takakkaw Falls (walk-in)	June 13 - Oct. 14															35
23 Hoodoo Creek	June 13 - Sep. 2															30
24 Wilcox	June 12 - Sep. 15															46
25 Icefields Centre RV	June 5 - Oct. 13															100
26 Icefields (tents only)	June 12 - Oct. 13															31
27 Jonas	June 5 - Sep. 8															25
28 Honeymoon	May 15 - Sep. 8															34
29 Kerkeslin	May 29 - Sep. 1															42
30 Wabasso	June 5 - Sep. 22															231
31 Wapiti (winter)	Nov. 1, 2024 - May 15, 2025															40
31 Wapiti (summer)	May 15 - Oct. 31															363
32 Whistlers	May 8 - Oct. 13 oTENTiks June 5 - Sep. 22															781

¹Dates include all nights that the campground is open for use.

² Some facilities at this campground are accessible.



Icefields Parkway



Visitor information

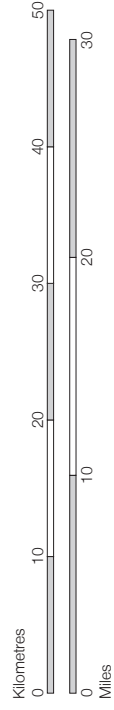
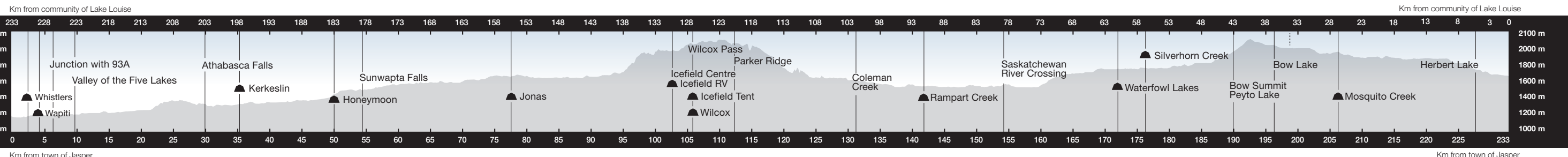
- Park gate
- Trailhead
- Toilet
- Accessible toilet
- Picnic area
- Viewpoint
- Red chairs
- Hotel
- Hostel
- Ski area
- Gondola
- Hospital
- Police
- Gas station
- Food
- Telephone
- Reservable campground
- First-come, first-served campground
- Road
- Winter road closure
- Park boundary
- Glacier/icefield

National park entry pass required.
You must have a valid national park entry pass, even if you do not intend to stop along the way.

Driving in the winter?
Services and attractions are limited in the winter. Winter tires (M+S) or chains are required by law for travel on the Icefields Parkway (Hwy 93N) between November 1 and March 31.
Visit parks.canada.ca/icefields/parkway for a winter map and more information.

There is no cell coverage along the Icefields Parkway.
Check weather and road conditions before you travel.

- Town of Jasper**
 - Whistlers 62
 - Wapiti 31
 - Junction with Wabasso Road (Hwy 93A)
 - Valley of the Five Lakes
 - Wabasso Lake
 - Wabasso 30
 - Athabasca Pass Lookout
 - Athabasca Falls
 - Athabasca Falls Hostel
 - Kerkeslin 28
 - Goats and Glaciers
 - Mount Christie
 - Honeymoon
 - Sunwapta Falls
 - Sunwapta Falls Resort (mid-May to mid-October)
 - Poboktan Creek
 - Jonas 27
 - Mushroom and Diadem Peaks
 - Beauty Creek Hostel
 - Beauty Creek
 - Stuiffeld Glacier
 - Tangle Falls
 - Icefield Centre (mid-April to mid-October)
 - Glacier View Inn / Icefield RV
 - Icefield Tent
 - Wilcox Pass
 - Wilcox
 - Sunwapta Pass (Banff and Jasper park boundary)
 - Hilda Creek Hostel
 - Parker Ridge
 - Nigel Pass
 - Bridal Veil Falls
 - Weeping Wall
 - Coleman Creek
 - Sunset Pass and Sunset Lookout
 - Rampart Creek Hostel (year-round)
 - Rampart Creek 14
 - Glacier Lake
 - Saskatchewan River Crossing
 - The Crossing Resort (mid-March to mid-November)
 - Howse Pass
 - Mistaya Canyon
 - Waterfowl Lakes
 - Chephren Lake, Cirque Lake
 - Silverhorn Creek 12
 - Bow Summit / Peyto Lake
 - Bow Glacier / Bow Glacier Falls
 - The Lodge at Bow Lake
 - Bow Lake
 - Helen Lake, Dolomite Pass
 - Crowfoot Glacier
 - Mosquito Creek
 - Mosquito Creek Hostel (year-round)
 - Molar Pass
 - Hector Lake
 - Hector Lake
 - Herbert Lake
- Community of Lake Louise**
 - Lake Louise Ski Area
 - Parks Canada Shuttles
 - Park and Ride (summer only)
- Town of Banff**
 - Victoria 34/39m
 - Kamloops Vancouver





Lake Louise Area

	Visitor centre		Heritage train station		Reservable campground Details on page 7
	Gate/Kiosk		Ski area		Electric fence
	Parks Canada shuttle		Gondola		Railway
	Roam Public Transit		Watercraft inspection station		Road
	Parking		Canoe rentals		Travel restriction
	RV parking		Horseback riding		Easy trail
	Bus parking		Playground		Moderate trail
	Toilet		Medical clinic		Difficult trail
	Accessible toilet		Post office		Community pathway
	Picnic area		Police		Seasonal closure May 15 to Oct. 15 parks.canada.ca/banff-trails
	Viewpoint		Electric vehicle charging station		
	Exhibit		Gas station		
	Hotel		Wi-Fi		
	Hostel		Interpretation		

West
 Icelfields Parkway Gate 11 km
 Yoho National Park 11 km
 Field 27 km
 Takakkaw Falls 38 km
 Emerald Lake 39 km
 Golden 85 km
 Vancouver 794 km

North
 Icelfields Parkway 80 km
 Next gas station (summer only) 80 km
 Columbia Icefield 127 km
 Jasper 230 km

Hiking and biking trails	Distance (one way)
1 Bow River Loop	7.2 km loop
2 Tramlane	4.8 km
3 Louise Creek	2.9 km
4 Great Divide*	9.8 km
5 Pipestone	4 km
6 Moraine Lake Lakeshore	1.3 km
7 Rockpile	0.7 km loop
8 Consolation Lakes	2.9 km
9 Larch Valley	4.5 km
10 Lake Louise Lakeshore	2.3 km
11 Fairview Lookout	1.2 km

*The Great Divide parking lot is closed throughout summer.

Bikes allowed
 Pedal assist
 e-bikes allowed

Park and Ride shuttle loading area

You must check in and board shuttles to Lake Louise and Moraine Lake here. Advance reservations required. Visit reservation.pc.gc.ca or call 1-877-737-3783. Learn more about transit options in the Lake Louise area on page 4.

This is not a suitable map to plan a hike. Proper trail maps and information are available at parks.canada.ca/banff-brochures or at a Parks Canada visitor centre. Check parks.canada.ca/banff-trails for restrictions, warnings and closures.

Construction on Lake Louise Drive will have significant impacts on personal vehicle access to Lake Louise Lakeshore. Expect heavy congestion. Full details: parks.canada.ca/lldrive

Moraine Lake Road
 Moraine Lake Road is closed to personal vehicles year-round. Parks Canada shuttles, Roam Public Transit and commercial transportation operators are permitted from June to mid-October. See parks.canada.ca/lakelouise-transit for more details.

Watercraft Inspection Station

Stop here to get a free aquatic invasive species inspection for your non-motorized watercraft. Open from spring to fall.

MAP NOT TO SCALE



Bow Valley Parkway: Lake Louise to Banff

Parks Canada shuttle parks.canada.ca/banff-transit	Picnic shelter	Watercraft inspection station	Reservable campground Details on page 7
Roam Public Transit Schedules: roamtransit.com	Viewpoint	Canoe docks	First-come, first-served campground Details on page 7
Parking	Exhibit	Boat launch	Road
Accessible parking	Hotel	Boat tours	Road closed in winter
RV parking	Hot springs	Gas station	Travel restriction
Toilet	Ski area	Snack bar	Railway
Accessible toilet	Gondola		Easy trail
Picnic area	Chairlift		Moderate trail
			Difficult trail

Hiking trails

- This is not a suitable map to plan a hike. Proper trail maps and information are available at parks.canada.ca/banff-brochures or at a Parks Canada visitor centre. Check parks.canada.ca/banff-trails for restrictions, warnings and closures.
- | | | | | |
|--------------------------|------------------------------|-------------------------------|---------------------------|--------------------------|
| 1 Stewart Canyon | 9 Goat Creek | 17 Cory Pass | 25 Castle Lookout | 33 Larch Valley |
| 2 Aylmer Pass/Lookout | 10 Marsh Loop | 18 Healy Pass | 26 Boom Lake | 34 Paradise Valley |
| 3 Cascade Valley | 11 Sundance Trail | 19 Bourgeau Lake/Harvey Pass | 27 Vista Lake | 35 Fairview Mountain |
| 4 C-Level Cirque | 12 Sundance Canyon | 20 Redearth Creek | 28 Arnica Lake/Twin Lakes | 36 Lake Louise Lakeshore |
| 5 Upper Stony | 13 Sulphur Mountain | 21 Johnston Canyon | 29 Taylor Lake | 37 Plain of Six Glaciers |
| 6 Cascade Amphitheatre | 14 Sulphur Mountain Westside | 22 Ink Pots via Moose Meadows | 30 Consolation Lakes | 38 Lake Agnes |
| 7 Spray River East Trail | 15 Healy Creek | 23 Silverton Falls | 31 Moraine Lake Lakeshore | |
| 8 Spray River West Trail | 16 Brewster Creek | 24 Rockbound Lake | 32 Eiffel Lake | |

Bow Valley Parkway
Private motor vehicle access may be restricted on portions of the Bow Valley Parkway to protect wildlife. Visit parks.canada.ca/banff-bow-valley-parkway for current information.

During part of the year, cyclists can enjoy the eastern section of the scenic Bow Valley Parkway with minimal vehicle traffic. Visit parks.canada.ca/Banff-cycling-BVP for more information.

Moraine Lake Road
Moraine Lake Road is closed to personal vehicles year-round. Parks Canada shuttles, Roam Public Transit and commercial transportation operators are permitted from June to mid-October. See parks.canada.ca/lakelouise-transit for more details.

Mandatory paid parking from mid-May to mid-October. See page 4.

Find the red chairs
parks.canada.ca/banff-red-chairs

Parking lots fill quickly. Park only in designated lots, not along the road. Check parks.canada.ca/banffnow for real-time parking status or parks.canada.ca/banff-transit for transit and shuttle options.





Town of Banff

Mount Norquay
Ski Area

ROAD NOT TO SCALE



Find the red chairs
parks.canada.ca/banff-red-chairs

Lake Minnewanka
See page 16



Banff Legacy Trail
Not maintained in winter
parks.canada.ca/banffnp-closures

Bow Valley Parkway
See pages 12-13
Lake Louise
See pages 10-11

Vermilion Lakes Drive (4.3 km)

Trans-Canada Highway

Forty Mile Creek

Second Vermilion Lake

First Vermilion Lake

Fenland Day-use Area

Fenland Trail
2.1 km

Fenlands Banff Recreation Centre

Industrial Area

Compound Road

Banff Avenue (4.5 km)

Banff Train Station

Railway

Gopher

Elk

Squirrel

Marten

Lynx

Bear

Beaver

Buffalo

Muskkrat

Otter

Caribou

Wolf

Grizzly

Wolverine

St. Julien

YWCA

Banff Centre for Arts and Creativity

Bow Falls

Surprise Corner

Bow Falls Avenue

Spray River

Spray River East 5.7 km

Spray River West 5.6 km

Spray River

Spray River

Spray River

Spray River

Spray River

Spray River

Spray River

Spray River

Spray River

Hidden Ridge Way

Tunnel Mountain Drive

Tunnel Mountain

Tunnel Mountain

Tunnel Mountain

Tunnel Mountain

Tunnel Mountain

Tunnel Mountain

Tunnel Mountain

Tunnel Mountain

Tunnel Mountain

Tunnel Mountain

Tunnel Mountain

Tunnel Mountain

Tunnel Mountain

Tunnel Mountain

Tunnel Mountain

Tunnel Mountain

Tunnel Mountain

Tunnel Mountain

Tunnel Mountain

Tunnel Mountain

Tunnel Mountain

Tunnel Mountain

Tunnel Mountain

Tunnel Mountain

Tunnel Mountain

Tunnel Mountain

Tunnel Mountain

Tunnel Mountain

Tunnel Mountain

Tunnel Mountain

Tunnel Mountain

Surprise Corner to Hoodoos 4.8 km

Hoodoos Viewpoint and Day-use Area

Hoodoos Viewpoint and Day-use Area

Hoodoos Viewpoint and Day-use Area

Hoodoos Viewpoint and Day-use Area

Hoodoos Viewpoint and Day-use Area

Hoodoos Viewpoint and Day-use Area

Hoodoos Viewpoint and Day-use Area

Hoodoos Viewpoint and Day-use Area

Hoodoos Viewpoint and Day-use Area

Hoodoos Viewpoint and Day-use Area

Hoodoos Viewpoint and Day-use Area

Hoodoos Viewpoint and Day-use Area

Hoodoos Viewpoint and Day-use Area

Hoodoos Viewpoint and Day-use Area

Hoodoos Viewpoint and Day-use Area

Hoodoos Viewpoint and Day-use Area

Hoodoos Viewpoint and Day-use Area

Hoodoos Viewpoint and Day-use Area

Hoodoos Viewpoint and Day-use Area

Hoodoos Viewpoint and Day-use Area

Hoodoos Viewpoint and Day-use Area

Hoodoos Viewpoint and Day-use Area

Hoodoos Viewpoint and Day-use Area

Golf Course Road
Closed from November 1 to May 1
parks.canada.ca/banffnp-closures

Tunnel Mountain Drive
Closed to vehicles from the first major snow fall to spring melt.

Parking lots fill quickly. Park only in designated lots, not along the road. Check parks.canada.ca/banffnow for real-time parking status or parks.canada.ca/banff-transit for transit and shuttle options.



0 1
Kilometres

Warning: This is not a suitable map to plan a hike. Proper trail maps and information are available at parks.canada.ca/banff-brochures or at a Parks Canada visitor centre. Check parks.canada.ca/banff-trails for restrictions, warnings and closures.

	Visitor centre		Viewpoint		Skatepark		Theatre
	Roam Public Transit Schedules: roamtransit.com		Hostel		Golf course		Sani dump
	Parking		Train station		Horseback riding		Reservable campground Details on page 7
	Accessible parking		Hot springs		Playground		Road
	RV parking		Ski area		Off-leash dog park		Road closed in winter
	Toilet		Gondola		Hospital		Railway
	Accessible toilet		Chairlift		Police		Easy trail
	Picnic area		Canoe docks		Electric vehicle charging station		Moderate trail
	Picnic shelter		Skating		Gas station		Town trail

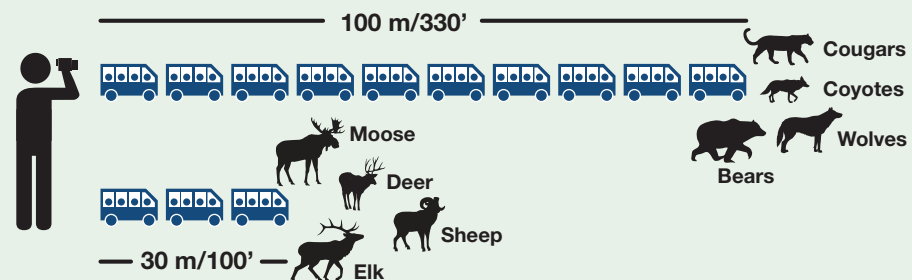
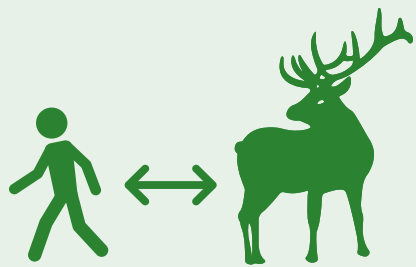


Your actions matter!

The chance to view wildlife in their natural environment is one of the most exciting things about visiting the mountain national parks. Help protect this special place by learning the **#WildlifeRules**.

Safely view wildlife

Whether you are exploring by foot, bike or vehicle, when you see wildlife, give them space:



Remember small animals like rodents and birds need space too! If you make them move, you are too close. Please report bear, cougar, wolf and coyote sightings to Banff Dispatch: 403-762-1470.

Obey speed limits

While highway fencing and wildlife crossings have reduced wildlife-vehicle collisions in Banff National Park, wildlife deaths on the road still occur. If you see wildlife while driving, **STAY IN YOUR VEHICLE**.



- Slow down.
- Use your hazard lights to alert others.
- Only pull over where safe to do so.
- Observe, take photographs, and move on.
- If a traffic jam develops, move on. It is unsafe for people and wildlife.

Respect area closures



Together, we can make space for wildlife when they need it most.

Obeying area closures and restrictions is the law. They protect ecologically sensitive areas, important habitat, and locations where the potential for conflict between humans and wildlife is high. If you come upon a closure, change your plans.

Visit parks.canada.ca/banff-bulletins for a list of closures, warnings and restrictions.



When you leave Banff National Park... leave it wild.

Never feed wildlife



Wildlife can quickly find any food, scented items, or garbage that is left unattended. When they eat these unnatural foods, wildlife learn to approach people for an easy meal. This can result in aggressive behaviour that puts both people and wildlife at risk of being hurt or killed.

Never leave these items unattended for any amount of time. They MUST be stored away in a vehicle, a hard-sided trailer or RV, or in a food locker.



Parks Canada staff are checking for unattended wildlife attractants. Attractants found in plain view will be removed and safely secured to reduce the risks to you and to wildlife.

Dispose of all garbage



Ensure all garbage, recycling, and food waste (even organic waste, like banana peels and apple cores) are disposed of in a wildlife-proof garbage bin, never on the ground, in a fire pit or in the bed of your truck.

If you see garbage left outside in the town of Banff, call 403-762-1218 (8 a.m. to 6 p.m. seven days a week). For garbage left outside at other locations in Banff National Park, call Banff Dispatch, 24 hours a day, 7 days a week, at 403-762-1470.

Keep dogs on leash



Dogs cause stress for wildlife as they may be seen as a threat. They can trigger aggressive behaviour from wildlife such as grizzly bears and elk. Be a responsible dog owner. In Banff National Park, it is your responsibility to:

- Ensure your dog is on a leash and under physical control at all times. It is the law.
- Pick up and dispose of your pet's waste in a wildlife-proof garbage bin.
- Know which trails allow dogs: parks.canada.ca/banfftrails

We recommend leaving your dog at home if you plan to camp, hike or go into the backcountry.

It is illegal to feed, entice or disturb any wildlife in a national park. Violators will be charged, be required to appear in court, and could pay fines up to \$25 000.



Before getting on the road



Check the weather forecast: weather.gc.ca



Check road conditions at 511.alberta.ca, call 511 in Alberta, or 1-855-391-9743. For road conditions in British Columbia, visit drivebc.ca or call 1-800-550-4997.



Winter tires are mandatory from November 1 to March 31 on many mountain roads. Ensure your vehicle has winter tires—look for the snowflake or “M+S” symbol.

Visit parks.canada.ca/banff-driving for safety tips and more information.

Before exploring the trails



Check the weather forecast. Make sure you are prepared with warm clothing and supplies. Visit parks.canada.ca/bnp-hike for a recommended packing list.



Check trail conditions at parks.canada.ca/banff-trails and closures and warnings at parks.canada.ca/banff-bulletins.



Travel only in terrain appropriate for your group’s experience, abilities and equipment.



Avalanche season in the mountains extends from November to June. Even a short walk from downtown Banff or Lake Louise can take you into avalanche terrain. Visit avalanche.ca for more information.



Cell phone coverage is not reliable in many areas of the park and **there is no cell coverage along the Icefields Parkway**. Before heading out, let someone know your plans including your route, trailhead, vehicle description, when you are leaving and when you expect to return.

Visit parks.mountainsafety.ca for more mountain safety information.



Know before you go



Stop by a Parks Canada visitor centre to plan a safe adventure, get a winter trails brochure and find activities that are right for your group.



Remember that winter brings risks. You don’t need to venture far to be in avalanche terrain. If you plan to explore beyond designated winter trails, avalanche training and equipment are essential.

Ice safety



Parks Canada does NOT monitor natural ice surfaces for safety, or mark potential hazards. If you choose to skate on natural ice, you do so at your own risk. Visit parks.canada.ca/banff-skating for safety information.

Winter tips



Trails can be icy in winter. Ice cleats are recommended for winter walking.



Bring a headlamp on your excursion. Daylight hours are limited and you never know when you might be delayed.



Be prepared and stay warm! Extra layers, blankets, hot drinks and snacks are essential.



Expect winter driving conditions. Drivers should travel based on comfort level and experience. See Mountain Safety on page 20 for more winter driving information and requirements.



Don’t drive if you don’t have to! Roam Public Transit runs between Banff and Lake Louise all winter. Visit roamtransit.com for additional routes and details.

Visit parks.canada.ca/banff-winter for trail maps, conditions report and more information.



National Park Regulations



Stay safe and enjoy

You are required by law to follow national park regulations. Thank you for helping protect people, landscapes and wildlife.



All visitors to Banff National Park must purchase a national park entry pass. Passes are available for purchase at park gates, visitor centres, campgrounds and at partner locations. Provincial passes are not valid in national parks.



Camping is permitted in designated campgrounds only. A valid camping permit and national park entry pass are required. Do not sleep in your vehicle or RV roadside, at pull-outs, or pitch a tent in an area that is not a campground.



In campgrounds, alcohol and cannabis cannot be consumed beyond your registered campsite. There is a daily ban on alcohol and cannabis consumption during quiet hours, between 11 p.m. and 7 a.m. During summer long weekends (May – September), the possession and consumption of alcohol and cannabis are not permitted in any campground.



The recreational use of Unmanned Aerial Vehicles (UAVs), also known as drones, is prohibited in all national parks and national historic sites.



Pets must be on a leash and under physical control at all times. Collect and discard their waste in wildlife-proof garbage bins.



Do not feed any wildlife. It is illegal to feed wildlife—this includes littering and leaving food or scented items unattended.



Do not litter. Dispose of garbage or recycling in wildlife-proof bins, or pack it out.



Take only photographs. It is illegal to pick flowers and mushrooms, cut down trees and branches, remove rocks, collect or disturb cultural artifacts or otherwise cause damage to natural objects or living things.



Stay out of closed areas. Area closures or activity restrictions are implemented when visitors are at risk or when wildlife require additional protection. Signs will indicate the impacted areas.



Be careful with fire. Fires are permitted only where designated metal fire rings and cook stoves are provided by Parks Canada. Rock rings are prohibited. Never leave fires unattended, and extinguish them completely using the soak, stir, soak method. Visitors must provide their own firewood at picnic areas. Most fuel stations and grocery stores within the national park sell firewood. Never bring wood from outside the park. Do not use deadwood, bark or branches for fuel. Never burn food or garbage. Visit parks.canada.ca/banff-fire-info for wildfire and fire ban information.



Anglers require a national park fishing permit, available at Parks Canada visitor centres. **Provincial fishing licenses are not valid in national parks.** National Park Fishing Regulations prohibit lead tackle under 50g and all bait, natural or chemical. Fishing is catch and release only in Banff, except for lake trout in Lake Minnewanka reservoir. For more information, see the *Fishing Regulations Summary* brochure, available at parks.canada.ca/banff-brochures or Parks Canada visitor centres.



Motors of all kinds are prohibited on all water bodies except Lake Minnewanka reservoir. Regulations apply to all watercraft launching in Banff National Park including motorboats, canoes, kayaks, paddleboards and inflatables: parks.canada.ca/banff-boating



Motorized off-road travel is not permitted.



Firearms are prohibited in national parks. Firearms include pellet guns, bear bangers, bows, slingshots and similar items.

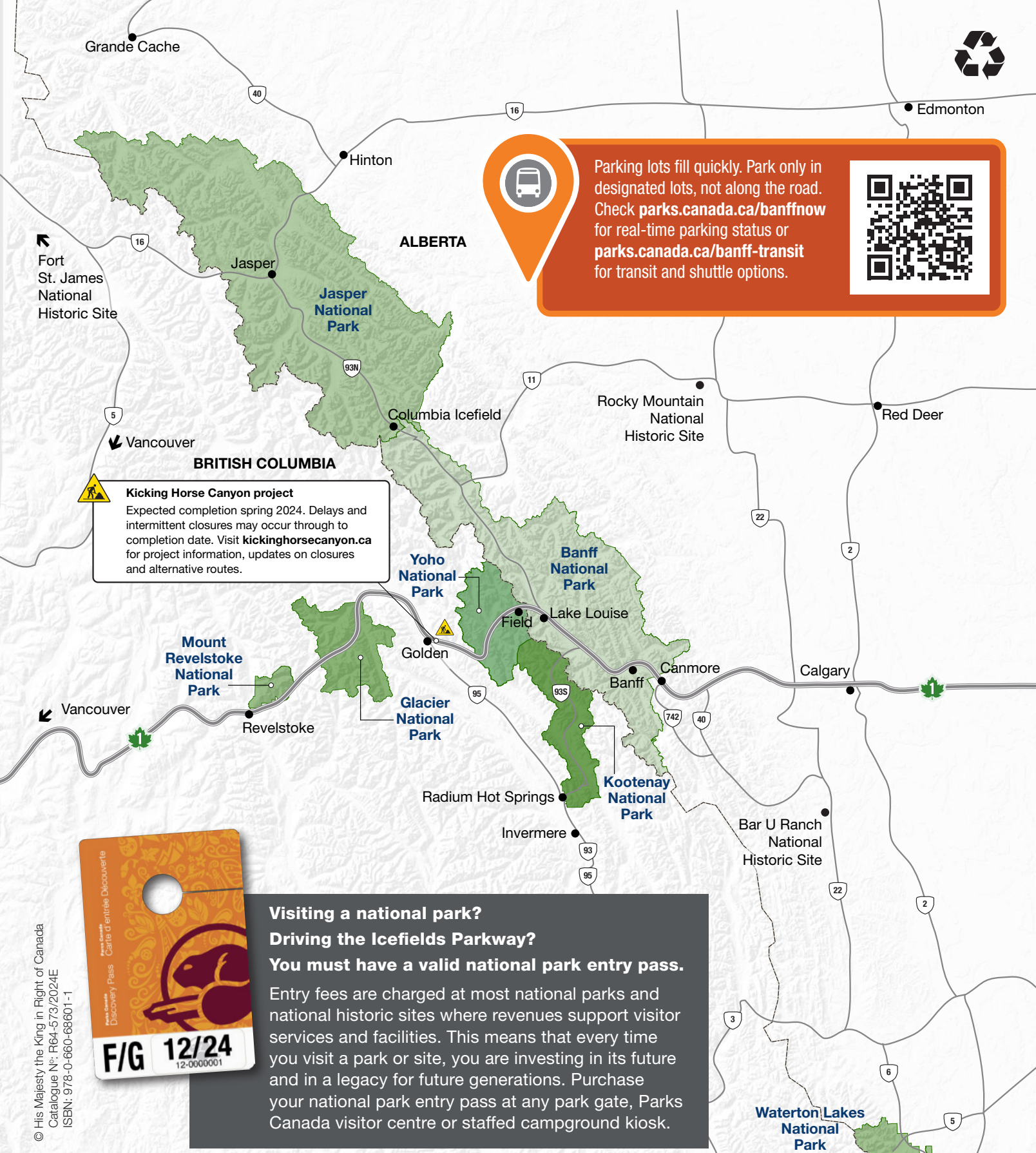


E-bikes (pedal-electric power-assisted bicycles) are only permitted on roads and some designated trails in Banff National Park. Visit parks.canada.ca/banff-e-bike for more information.

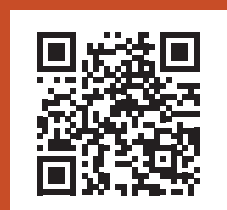
The Canada National Parks Act

Park Wardens are responsible for enforcing park regulations as required by the *Canada National Parks Act*: parks.canada.ca/banffregulations. To report park violations 24 hours a day, 7 days a week, call: 1-888-WARDENS (927-3367)

Violators will be charged, be required to appear in court, and could pay fines up to \$25 000.



Parking lots fill quickly. Park only in designated lots, not along the road. Check parks.canada.ca/banffnow for real-time parking status or parks.canada.ca/banff-transit for transit and shuttle options.



Kicking Horse Canyon project
 Expected completion spring 2024. Delays and intermittent closures may occur through to completion date. Visit kickinghorsecanyon.ca for project information, updates on closures and alternative routes.



**Visiting a national park?
 Driving the Icefields Parkway?
 You must have a valid national park entry pass.**

Entry fees are charged at most national parks and national historic sites where revenues support visitor services and facilities. This means that every time you visit a park or site, you are investing in its future and in a legacy for future generations. Purchase your national park entry pass at any park gate, Parks Canada visitor centre or staffed campground kiosk.

© His Majesty the King in Right of Canada
 Catalogue N°: R64-573/2024E
 ISBN: 978-0-660-68601-1


Wildlife in area
 Obey speed limit
Faune dans le secteur
 Obéissez à la limite de vitesse

**In case of EMERGENCY,
 call 911 or satellite phone: 403-762-4506**

Cell phone coverage is not reliable throughout the national park.
 Alberta Road Report: 511 or 1-855-391-9743 / 511.alberta.ca
 British Columbia Road Report: 1-800-550-4997 / drivebc.ca