



2015 - 2016

Getting Around Banff National Park



Également offert en français

P. Zizka

What's inside

- *Top 10 Things to Do*
- *Suggested Itineraries*
- *Maps*
- *Where to Camp*
- *Safety Information*



P. Zizka

OUR STORY

In 1883, like Aboriginal peoples long before them, three railway workers stumbled across a series of hot springs on the lower shoulder of present-day Sulphur Mountain. No doubt they laid down their shovels and pick axes, stripped out of dusty clothes and gratefully slid into the waters to soothe their aching muscles. Two years later, as Canada was completing its transcontinental railway, Sir John A. Macdonald, Canada's first Prime Minister, realized a new national dream: the creation of Canada's first national park, which set aside the Cave and Basin hot springs and 26 km² of land as a small protected reserve. More than a century later, the national park draws millions of people each year to experience the staggering natural beauty of Banff and Lake Louise, no less than seven national historic sites and a bounty of wildlife large and small — from iconic grizzly bears to the Banff Springs Snail. With the park's long history of mixing innovative conservation with spirited adventure, Canada's oldest national park offers mountains of possibilities.

A UNESCO WORLD HERITAGE SITE

Four of the mountain national parks – Banff, Jasper, Yoho and Kootenay – are recognized by the United Nations Educational, Scientific and Cultural Organization as part of the Canadian Rocky Mountain Parks World Heritage Site, for the benefit and enjoyment of all nations. Among the attributes that warranted this designation were vast wilderness, diversity of flora and fauna, outstanding natural beauty and features such as Lake Louise, Maligne Lake, the Columbia Icefield and the Burgess Shale.



United Nations
Educational, Scientific and
Cultural Organization

Organisation
des Nations Unies
pour l'éducation,
la science et la culture



• **Canadian Rocky
Mountain Parks**
• inscribed on the World
Heritage List in 1984

• **Parcs des montagnes
Rochéuses canadiennes**
• inscrit sur la Liste du
patrimoine mondial en 1984

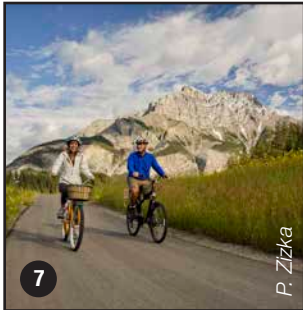


1 **CAVE AND BASIN NATIONAL HISTORIC SITE**

Nature, culture and history minutes from Banff Avenue. Impressive architecture, bubbling mineral waters, and an underground cave that gave rise to a huge idea, the birthplace of Canada's national parks. Family activities and interactive programs available. (see p. 6)

2 **BOW VALLEY PARKWAY (HWY 1A)**

This year-round 48 km scenic drive between Banff and Lake Louise is the place to be for wildlife viewing, picnicking, learning opportunities and hiking trails. Rustic campgrounds, unique cottage accommodations and Johnston Canyon enhance this experience. (see p. 5)



3 **ICEFIELDS PARKWAY**

This world-renowned, 230 km drive through the heart of the Canadian Rocky Mountain Parks UNESCO World Heritage Site is a must do! The parkway winds through ancient glaciers, dramatic rock spires, emerald lakes, and broad sweeping valleys. (see p. 5)

4 **LAKE MINNEWANKA LOOP**

Visit a cascading waterfall, a glacial lake, remnants of a coal mining town and a scenic canyon. Minnewanka, the largest lake in the park, is ideal for boating, camping, picnicking, road biking, hiking, and cross-country skiing or winter walking. (see p. 6)

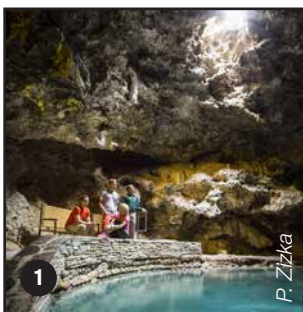


5 **BANFF UPPER HOT SPRINGS**

A visit to the upper hot springs is a long-standing tradition. Relax in an outdoor pool with hot, mineral rich water amidst the jagged peaks. Open daily, year round. Day spa, cafe and gift shop on site. (see p. 6)

6 **LAKE LOUISE – THE LAKE**

Victoria Glacier and Lake Louise are the most photographed locations in the Canadian Rockies. This spectacular alpine setting is the hub for iconic hikes, canoeing, horseback riding, climbing, and awe-inspiring scenery. Before 11 a.m. and after 5 p.m. is quieter.



7 **BANFF LEGACY TRAIL**

Paved paths and roadways span 26 km from the park's East Gate to the Bow Valley Parkway. Cyclists, strollers, and runners enjoy breathtaking views, picnics, the Banff townsite, Vermilion Lakes, and other popular trails along the way.

8 **MORAINÉ LAKE**

Known as the Valley of the Ten Peaks, this alpine area offers hiking, paddling, and dramatic photographic opportunities. In the winter, the Moraine Lake Road is closed to vehicles and becomes a popular cross-country ski trail. (see p. 7)



9 **VERMILION LAKES DRIVE**

On foot, by bike or by car, explore this year-round 4.3 km paved road offering wildlife viewing, learning opportunities and breathtaking scenery. Relax on the docks and benches and snap a picture of the iconic Mount Rundle. (see p. 6)

10 **GREAT CANADIAN CAMPING**

Camping in the park is as rewarding as its majestic landscapes. Sites range from rustic, treed settings to full service with mountain views. Choose from traditional RV and tented sites to modern A-frame, soft-sided oTENTik or tent-equipped campsites. (see p. 8)

Suggested Itineraries



P. Zizka

HALF-DAY ADVENTURES

HIT THE TOP SPOTS IN TOWN

Be inspired on an award-winning tour at the Cave and Basin National Historic Site – The Birthplace of Canada’s National Parks. Browse through 5 000 natural history specimens displayed at the Banff Park Museum NHS and then stroll along the trails at the famous Bow Falls. To end the day, luxuriate in the warm mineral waters of the historic Upper Hot Springs.

FOUR EXTRAORDINARY AFTERNOONS

Canoe to the perfect resting spot at Vermilion Lakes, an irreplaceable wetland and home to abundant wildlife. Hike a switchback trail up Tunnel Mountain for the best views of town. Trek up to the Sulphur Mountain Cosmic Ray Station NHS to observe from above, or ride a bike past rivers and valleys on the smoothly paved Banff Legacy Trail.

FAMILY TIME ON MINNEWANKA LOOP

Picnic with the kids by Lake Minnewanka then stroll the twisting shoreline trail to Stewart Canyon. A short drive over to Johnson Lake offers canoeing and fishing or for a truly Canadian experience stay overnight in a comfortable oTENTik A-frame canvas cabin on the shores of Two Jack Lake.

A FULL DAY OF FUN

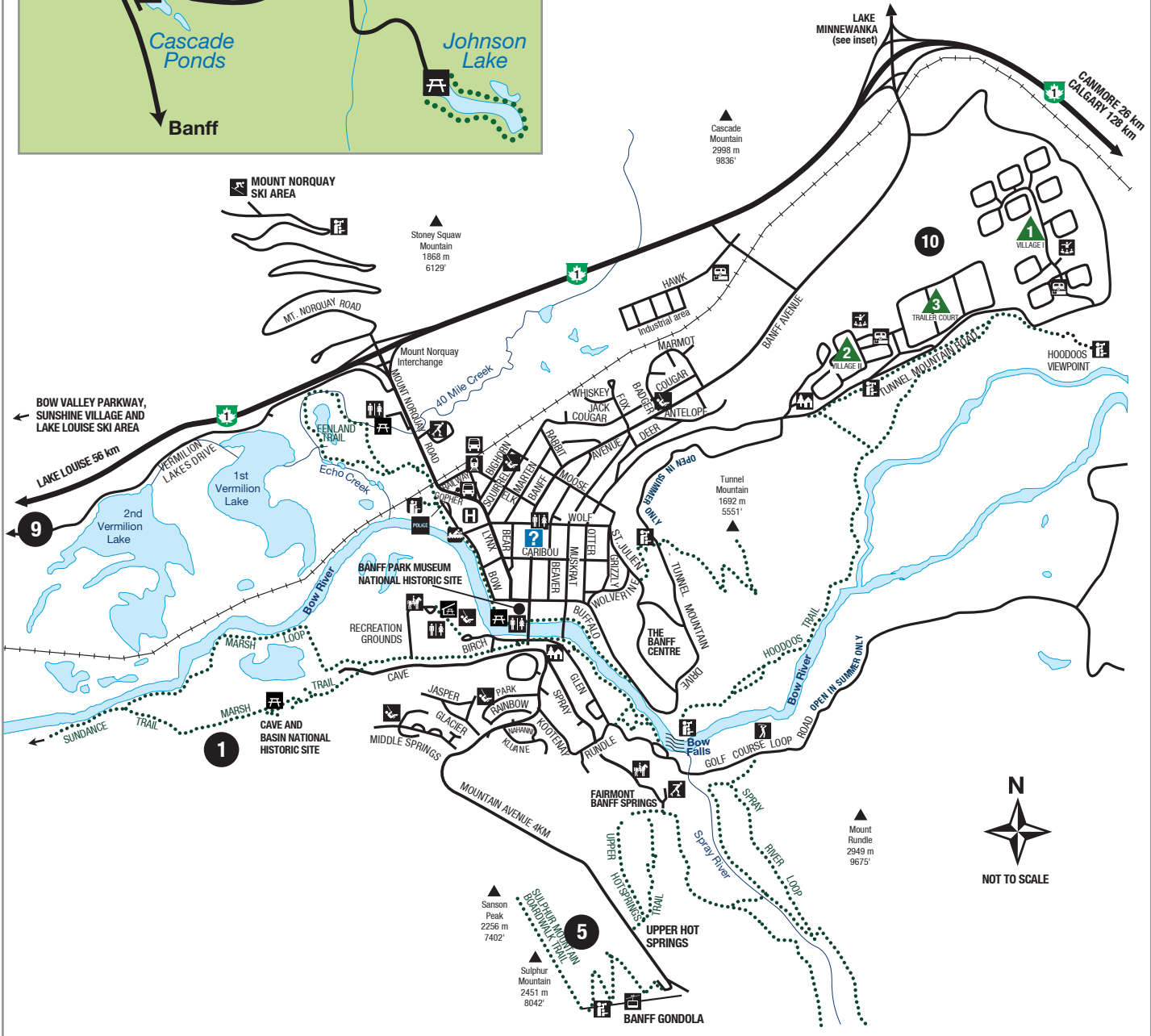
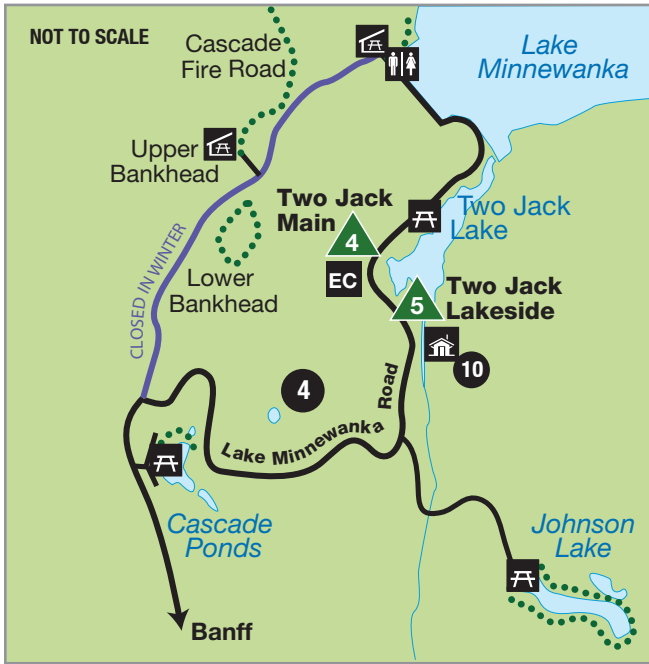
TAKE THE SCENIC ROUTE

Drive the Icefields Parkway past 100 glaciers, sparkling waterfalls and turquoise lakes on your way from Lake Louise to Jasper. Hike to view ancient ice at Parker Ridge and Bow Glacier Falls. Snap unforgettable panoramas at Crowfoot Glacier and Peyto Lake viewpoints – and a photographers’ favourite, Herbert Lake. For scenic views, park your motorhome at Silverhorn Creek Campground just north of Lake Louise. Try a unique adventure, take the David Thompson Highway to Rocky Mountain House NHS to explore the historic fur-trading fort during the day and sleep in tipis and trapper’s tents at night.

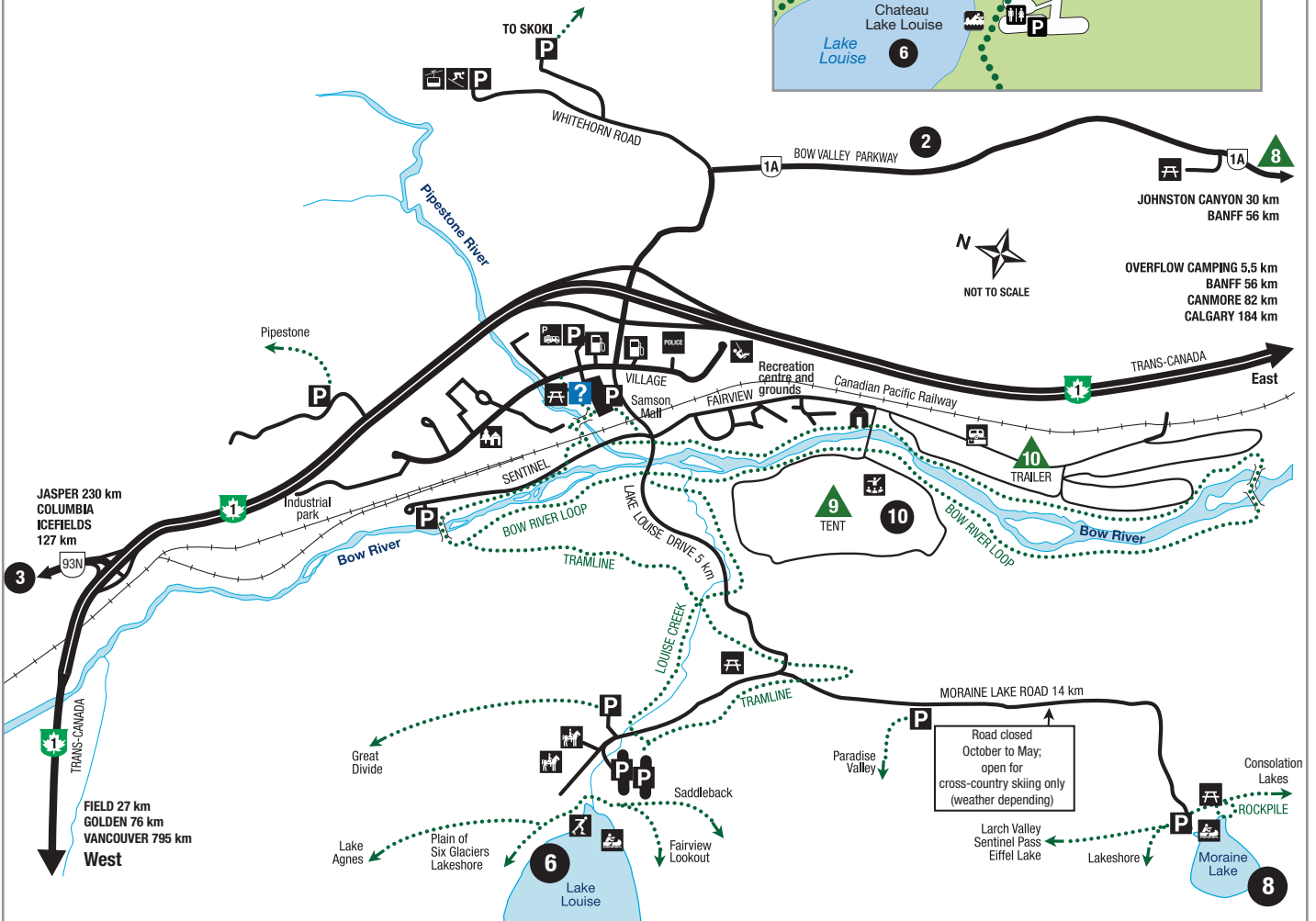
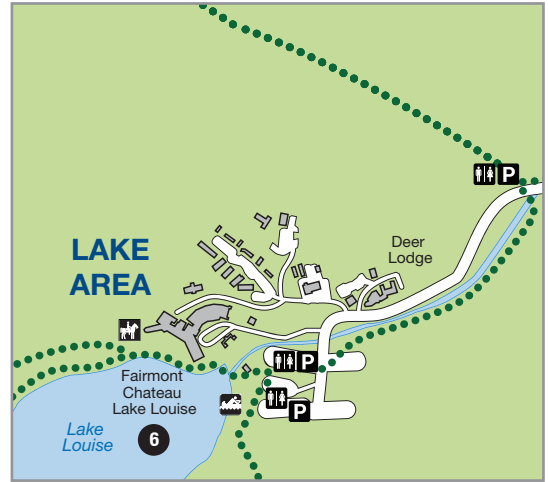
BANFF’S UNIQUE LANDSCAPES

A scenic, slow speed drive along the Bow Valley Parkway winds through wildflower meadows, sun-speckled forests and multi-tiered pinnacles of Castle Mountain. Walk among waterfalls in the summer and on glittering ice in the winter at Johnston Canyon. Experience iconic Lake Louise from a canoe on still water, by bike on the Bow River trail, or from above at two historic teahouses surrounded by glaciers. In the winter, play on skates, skis or snowshoes. From Lake Louise, it’s a short trip up to Moraine Lake to photograph the glowing blue-green water surrounded by the Valley of the Ten Peaks.

TOWN OF BANFF



VILLAGE OF LAKE LOUISE



LEGEND

- Trans-Canada Highway
- Icefields Parkway
- Trail

SERVICES

- Bus Station
- Campground
- Gas Station
- Hospital
- Hostel
- Parking
- Police
- RV Parking
- Sani Dump
- Train Station
- Visitor Centre
- Washroom

THINGS TO DO

- Attraction
- Canoeing
- Exhibit
- Golf
- Gondola
- Horse Riding
- Lookout
- Picnic Area
- Playground
- Skating
- Ski Hill
- Theatre

Where to Camp

Campgrounds	Full Hook-up	Electrical	Sani Dump	Flush Toilets	Pit Toilets	Showers	Firepit	Cooking Shelter	Drinking Water	Equipped Campsites	oTENTik	Tipis/Trapper Tents	Interpretive Programs	Disabled Access	Open Dates	Sites
1 Tunnel Mt. Village I			☑	☑		☑	☑	☑				☑	☑		May 14 – Oct 5	618
2 Tunnel Mt. Village II		☑	☑	☑		☑		☑	☑			☑	☑		Open year round	188
3 Tunnel Mt. Trailer	☑		☑	☑		☑		☑				☑	☑		May 14 – Oct 5	321
4 Two Jack Main			☑	☑			☑	☑	☑	EC					Jun 25 – Sep 8	380
5 Two Jack Lakeside				☑		☑	☑	☑	☑		☑		☑		May 14 – Oct 5	74
6 Johnston Canyon			☑	☑		☑	☑	☑	☑			☑	☑		May 28 – Sep 28	132
7 Castle Mountain				☑			☑	☑	☑				☑		May 28 – Sep 14	43
8 Protection Mountain				☑			☑	☑	☑				☑		Jun 26 – Sep 7	89
9 Lake Louise Tent			☑	☑		☑	☑	☑	☑			☑	☑		May 29 – Sep 27	206
10 Lake Louise Trailer	☑		☑	☑		☑	☑	☑				☑	☑		Open year round	189
11 Mosquito Creek					☑		☑	☑	☑						Jun 1 – Oct 12	32
12 Silverhorn					☑		☑								Jun 26 – Sep 7	50
13 Waterfowl Lakes			☑	☑	☑		☑	☑	☑			☑			Jun 26 – Sep 7	116
14 Rampart Creek					☑		☑	☑	☑						Jun 1 – Oct 12	50
15 Rocky Mountain House NHS Campground					☑		☑	☑			☑	☑			May 11 – Sep 30	43

Highlighted campgrounds may be reserved.

PLANNING TO CAMP IN ANOTHER NATIONAL PARK? BOOK ONLINE OR CALL AHEAD FOR INFORMATION AND RESERVATIONS.

Jasper, Yoho, Kootenay and Waterton Lakes national parks offer extraordinary camping experiences, ranging from full-service RV sites to rustic settings. Many campsites can be reserved and most fill up quickly. Call ahead or go online for recommendations and availability of campsites, oTENTik and Equipped Campsites.

1-877-RESERVE OR RESERVATION.PC.GC.CA

BACKCOUNTRY CAMPING

Parks Canada offers a variety of pristine backcountry settings to choose from. Contact a Parks Canada Visitor Centre for information on services and bookings. (see p. 11)



MOUNTAIN SAFETY



Unpredictable mountain weather can change road and trail conditions instantly and wildlife can be anywhere, at any time. These simple precautions will help ensure a safe and enjoyable visit.

- Check road and trail conditions prior to heading out.
- Obey speed limits and watch for wildlife on the roadside.
- Stay on designated roads, trails and other hardened surfaces.
- Keep a 'Bare' campsite. Visit parksCanada.gc.ca/bare-campsite.
- Make noise on the trails and let wildlife know you are coming.
- Research and plan overnight trips including potential trail restrictions and closures, avalanche conditions and mandatory backcountry permits. Visit avalanche.pc.gc.ca for safety tips.
- Let someone know your travel plans; cell phones are not reliable in the wilderness.
- Keep clear of cliffs, ledges and fast moving water.



PARK REGULATIONS

Following park regulations while enjoying the national parks will help protect the visitor, the land, and the wildlife:

- Keep pets on a leash and under control at all times. Please collect and properly discard of pet feces.
- Take only photographs. It is illegal to pick flowers, mushrooms, cut down trees, branches, remove cultural artifacts or otherwise cause damage to natural objects or living things.
- Be considerate of your neighbours. Liquor consumption is prohibited in public places, day-use areas, and during set periods in campgrounds. Respect quiet hours and liquor bans in campgrounds.
- Stay out of closed areas. Area closures or activity restrictions are implemented when visitors are at risk or when wildlife requires additional protection. Signs indicate the areas impacted.
- Be careful with fire. Fires are permitted only in designated areas with fireboxes or fire pits. Extinguish fires completely. Do not use deadwood, bark or branches for fuel.
- Buy fishing permits. Anglers require a national park fishing permit, available at Parks Canada visitor centres. Provincial licenses are not valid in national parks.
- Going boating? Motors are not allowed on most lakes.
- Motorized off-road travel is not permitted.



THE CANADA NATIONAL PARKS ACT

Park Wardens are responsible for enforcing park regulations as required by the *Canada National Parks Act*. To report park violations, call 24 hours, 7 days per week:

1-888-927-3367 (Banff, Yoho, Kootenay and Waterton Lakes)

1-877-852-3100 (Jasper and Mountain Revelstoke & Glacier)

Visit parksCanada.gc.ca/mtnregulations

Violators will be charged, be required to appear in court, and could pay fines of up to \$25 000.



G. Twomey

MEET PARK INTERPRETERS

Want to discover more about the uniqueness of the area's natural and cultural heritage? Friendly and knowledgeable interpreters are here to share the stories of the special places protected by Parks Canada.

Look for interpreters at campgrounds and popular day-use areas throughout the summer, and at national historic sites during various times of the year.

Check parksCanada.gc.ca/banff-interpretation for more information on interpretive experiences in Banff National Park and national historic sites.

WILDLIFE VIEWING TIPS

The best chance of observing wild animals is by giving them space to feed, rest and keep their young safe. Help keep them wild by:

- Staying at least three (3) bus lengths (30 metres) away from elk, deer and bighorn sheep.
- Staying at least ten (10) bus lengths (100 metres) away from bears, cougars and wolves.
- Ensuring children are in immediate sight and within close reach at all times.
- Never feeding or approaching wildlife.
- Ensure pets are under control and on a leash at all times.
- Carrying bear spray when out on the trails, ensuring it is accessible, and know how to use it.

For further information pick up a copy of *Keep the Wild in Wildlife* brochure at a Parks Canada Visitor Centre.

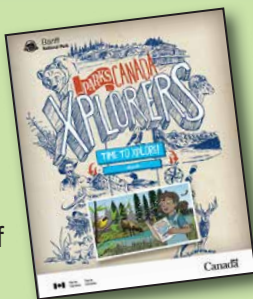
To report wolf, bear and cougar sightings call 403-762-1470.



Parks Canada

HEY KIDS AGED 6-11!

Check out Parks Canada's Xplorers booklets filled with fun activities to do while visiting. In Banff National Park there are four different booklets to complete: Banff National Park, Cave and Basin, Banff Park Museum and Rocky Mountain House national historic sites.

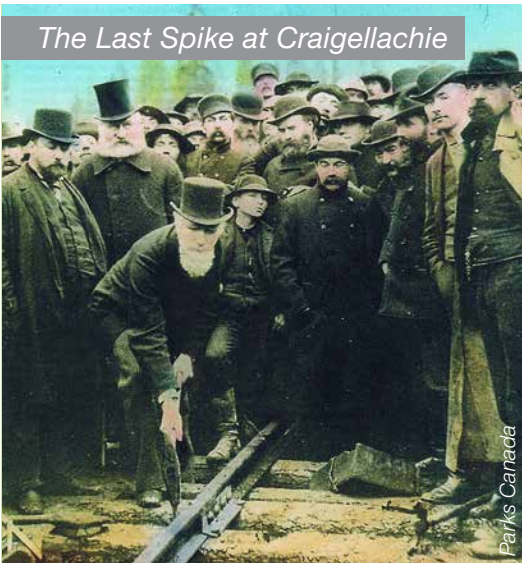


M. Chentia

REMEMBERING CANADA'S HISTORY...

SPOTLIGHT ON PARKA

The Last Spike at Craigellachie



ON THE ROAD TO 2017

Canada turns 150 in 2017! On the road to this momentous celebration, Parks Canada's treasured natural and historic places will host special programs and events to commemorate the milestones that contributed to the Canada of today, strong and free. Experience what inspired Canada!

parkscanada.gc.ca



Parka, Parks Canada's mascot, will soon be a TV star! Check out Parka on Chirp TV airing on the CBC Kids network and on Radio Canada in french in fall 2015.

WANT MORE INFORMATION ABOUT BANFF NATIONAL PARK?

Visit facebook.com/BanffNP or twitter.com/BanffNP

These and more detailed brochures are available online or for pick-up at a Parks Canada Visitor Centre.



WANT MORE INFORMATION ON OTHER MOUNTAIN NATIONAL PARKS?

BANFF

Banff Visitor Centre: 403-762-1550
Lake Louise Visitor Centre: 403-522-3833
pc.gc.ca/banff

Banff Lake Louise Tourism: 403-762-8421
banfflakelouise.com

JASPER

Jasper Information Centre: 780-852-6176
pc.gc.ca/jasper

Tourism Jasper: 780-852-6236
jasper.travel

KOOTENAY

Kootenay Visitor Centre: 250-347-9505
pc.gc.ca/kootenay

Tourism Radium/Radium Chamber of Commerce:
1-888-347-9331
tourismradium.com

YOHO

Yoho Visitor Centre: 250-343-6783
pc.gc.ca/yoho

Tourism Golden: 1-800-622-4653
tourismgolden.com
field.ca

MOUNT REVELSTOKE AND GLACIER

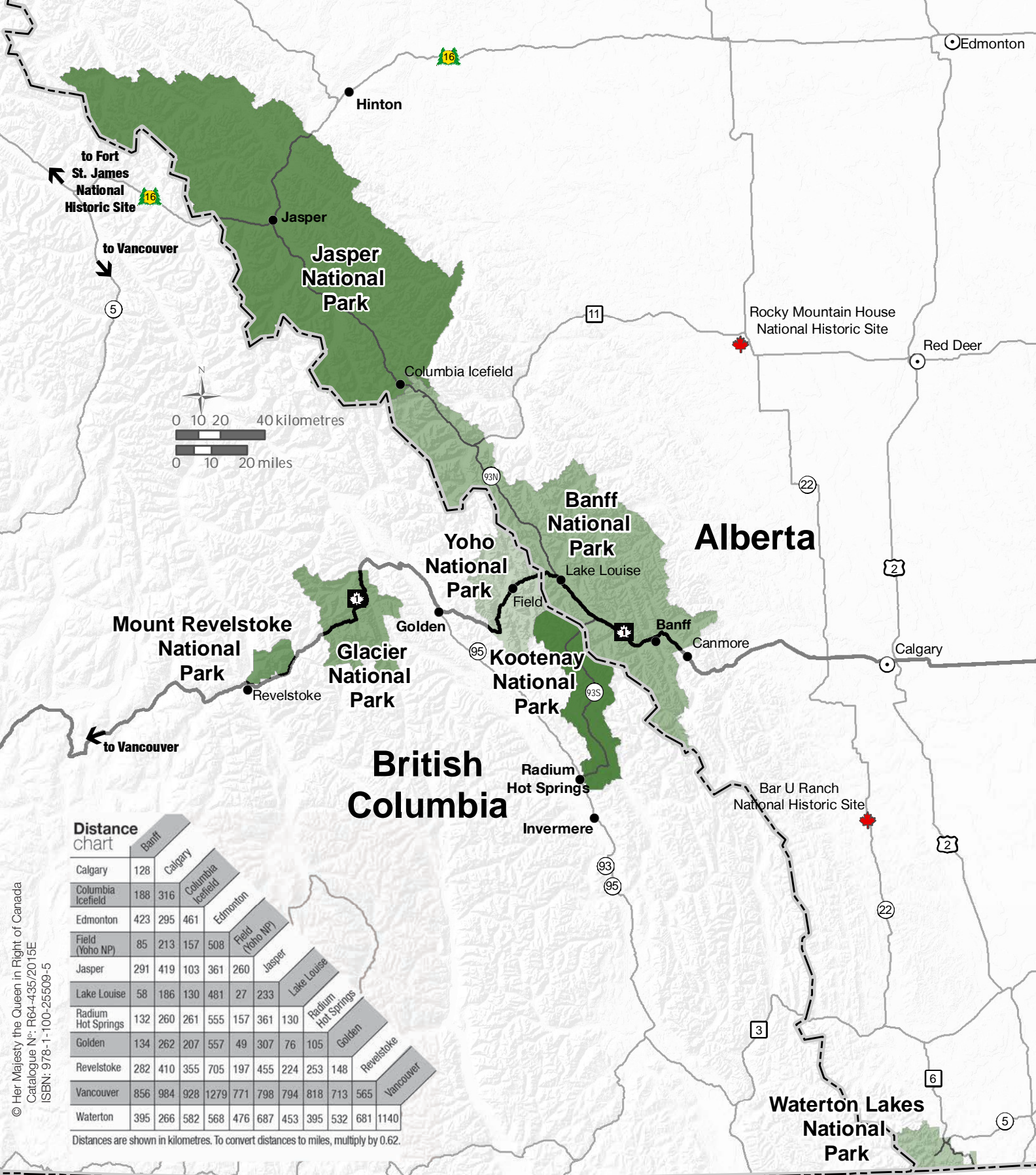
Rogers Pass Discovery Centre: 250-837-7500
pc.gc.ca/glacier • pc.gc.ca/revelstoke

Tourism Revelstoke: 1-800-487-1493
seerevelstoke.com

WATERTON LAKES

Waterton Lakes Visitor Centre: 403-859-5133
pc.gc.ca/waterton

Waterton Chamber of Commerce
mywaterton.ca



© Her Majesty the Queen in Right of Canada
 Catalogue N°: R64-436/2015E
 ISBN: 978-1-100-25509-5



Please slow down, for your safety and ours.



FOR EMERGENCIES DIAL 911 (Police, Fire and Ambulance)

Road Conditions: call 511 (AB)
 1-800-550-4997 (BC)

Cell phone coverage is not reliable in all areas of the mountain parks.